

Whimple News



June/July 2007



**QUIZ NIGHT EVERY OTHER
SUNDAY**
Starts at 8.30pm
EVERYONE WELCOME!

The Thirsty Farmer

WHIMPLE, EXETER, DEVON, EX5 2QQ

Telephone: 01404 822287

TRADITIONAL HOSPITALITY AT ITS BEST

**Varied A La Carte Menu changed daily
alongside traditional 'Farmers Favourites'**

Great Selection of fine Wines

Open all day Friday, Saturday & Sunday

LIVE MUSIC DATES

Fri 29th June - Carnaby Street

Fri 6th July - Plan B

WHAT'S ON IN WHIMPLE

June

- 2nd Church Coffee Morning 10.15am – 2.00pm
- 3rd Celebration Service, St Mary's Church
- 4th Parish Planning Meeting, Victory Hall at 7.00pm
- 5th Ladies Fashion Show, Village Hall at 7.30pm
- 9th Church Fete – Hindstrete at 2.30pm
- 10th S Club 11/Impact in the Scout Hut at 10.45am
- 16th Church Coffee Morning 10.15am – 2.00pm
- 16th Soup and Sarnie Lunch at the Victory Hall 12.00noon to 1.30pm
- 18th Parish Council Meeting, Victory Hall at 7pm
- 19th 'Whimble Parish Plan' Update Meeting, Village Hall at 7.30pm
- 22nd Cantilena Concert, St Mary's Church at 7.30pm
- 24th S Club 11/Impact in the Scout Hut at 10.45am
- 29th Live Music 'Carnaby Street', Thirsty Farmer
- 30th **VILLAGE WEEK STARTS** (refer to middle pages for full programme)

July

- 2nd Darts Competition, Thirsty Farmer
- 3rd Skittles Competition Starts, Thirsty Farmer
- 4th Skittles Competition Cont'd, Thirsty Farmer
- 5th Skittles Competition Finishes, Thirsty Farmer
- 6th Live Music 'Plan B', Thirsty Farmer
- 7th **Village Day!**
- 7th Church Coffee Morning 10.15am – 2.00pm
- 7th Soup and Sarnie Lunch at the Victory Hall 12.00noon to 1.30pm
- 8th Quiz Night, Thirsty Farmer
- 8th S Club 11/Impact in the Scout Hut at 10.45am
- 8th **VILLAGE WEEK ENDS**
- 14th Church Coffee Morning 10.15am – 2.00pm
- 21st Church Coffee Morning 10.15am – 2.00pm
- 22nd S Club 11/Impact in the Scout Hut at 10.45am
- 28th Soup and Sarnie Lunch at the Victory Hall 12.00noon to 1.30pm

August

- 11th VPA Flower Show

St Mary's Church

Monthly Programme of Services

1st Sunday	8.00am	Holy Communion
	11.00am	Celebration Service
2nd Sunday	11.00am	Holy Communion
	10.45am	S club11/Impact in the Scout Hut
3rd Sunday	8.00am	Holy Communion
	11.00am	Morning Service
4th Sunday	11.00am	Holy Communion
	10.45am	S club11/Impact in the Scout Hut
Sunday	11.00am	Joint Benefice Communion

PETER SALTER A.I.R.T.E.

MOBILE MOTOR ENGINEER

(Member Institute of Road Transport Engineers)

Servicing & M.O.T. Preparation
Engine Overhauls & Bodywork Welding
Cars & Commercial Vehicles

Telephone: Whimble (01404) 823054

Talaton Inn

SUNDAY LUNCH - DAILY SPECIALS
BAR MENU AND SNACKS
RESTAURANT OPEN TUESDAYS TO
SATURDAY EVENING



**Good Ales, Good Food
Pop in and say Hello**

Tel: 822214

Miles the acting Ed

With Ed currently unavailable due to exhausting holiday commitments, it has fallen to me to welcome you to the June/July edition of The News. For those who know these things, this is the 48th edition which has been put together by the 'new' team - 8 years no less, most of which seems to have flown by. I hope that you will agree The News continues to meet the objectives of informing the village and supporting local businesses. The team are always keen to hear from anyone who might be able to help with the production of The News or who have feedback for us - of course we reserve the right to completely ignore such feedback

This edition is a really good one, with reports covering the various events that have been going on over the last couple of months and importantly looking forward to Village Week. Alongside these we have our valued regular contributors - well done for what you do, I know sometimes it feels like hard work to come up with something, but I promise it is worth it and your articles are appreciated.

As Village Week approaches, I hope everyone will be able to support the various events to the maximum. The schedule will be full yet again and those who organise these events do so in their own time for the benefit of the community as a whole. No doubt the organisers of the Barn Dance in the Blossom are currently bathing in the success of the event. I could not go, but everyone I have spoken to who went said it was fantastic and very well organised - did all that beer really get drunk?? Well Done to the whole team who put together the event and to Julian and Sue Wilson in particular for hosting it. Are you able to organise the weather for Village Week too please?!

Since Ed's piece entitled "Accident", which appeared in the last edition, there has been quite a bit of feedback and comment about driving speeds around the village. The theme is consistent - why do some people seem to need to race around our roads? All drivers will appreciate that the roads in and around Whimple are simply not designed for high speeds and when you add in the potential dangers of pedestrians and pets, it seems only a matter of time before an inconsiderate driver causes a major incident. Let's hope I am wrong, but please do think about your speed when you are driving around the village.

Finally, one goodbye to mention. Tanya at The Thirsty Farmer will be leaving at the end of the month, with Vicky continuing in sole control. Tanya and Roy will still be local, so we will no doubt see them often, but thanks for what you have done whilst you have been involved at The Farmer. Your support of The News and other village organisations has always been appreciated.

Next deadline is Monday 16th July - articles via Jim and Alison at the Post Office, or direct to Bob at bob.scanlan@eclipse.co.uk

Miles Leonard

Please use the Whimple Diary held in the Post Office for checking availability of venues and booking events.

If your Association has an event which you would like listed above please contact **Nicky Hitchcock** on 823194 or e-mail nickyjhitch@tiscali.co.uk



(formerly known as Waves)

UNISEX HAIRDRESSERS

Advanced Colour Courses with L'Oreal and Wella

Open: Tues - Saturday: Late Night by appointment.

Free parking by kind permission of the Thirsty Farmer

TEL 01404 823400

New Inn Cross, Whimble. Devon. EX5 2TS

Liberte

HOLIDAYS

...Your French connection South of France:

Long lazy sunny days in a beautiful French villa, with communal pool right on the Mediterranean coast.

Sleeps up to six and includes patio garden with barbecue. Satellite TV, washing machine, bike and roller-blade hire, wind surfing, kite surfing and sand sailing, as well as horse riding and go carting and on the edge of a nature reserve.

Situated near all major airports (Flybe, Ryanair, Easyjet) and airport collection available. Auto train to Narbonne from Calais; 10 min drive from motorway. Prices from £70 p.p./during July and August (price based on 6 people sharing). Also countryside B & B available and assistance with house searches and relocation available.

Please visit: **www.liberteholidays.com** or phone Janine or Paul on

00-33-468-44-12-08



Whimble Post Office News

The response from the last issue of Whimble news was fantastic and as a result we now have several more banking customers.

This month we would like to draw your attention to The Post Office Home Phone and Insurance.

Post office Home Phone is due for a re-launch on June 4th, with some really good incentives to save money. We know its hard to change providers if you are happy with the service they provide and initially it may seem like too much trouble, but do they treat you like a valued customer?

Are they offering you the best value for money?

Remember;

Switching is simple we will do it for you.

You keep your own telephone number.

You will save money.

Monthly line rental cheaper than BT

Pick up a leaflet or pop in to see us for more details.

Insurances are a growing area for post offices due to the fact that the policies are simple and very competitive. At the moment for car Insurance there is a special offer available for new policies of '£25.00 off and one extra month free'.

For van and home insurance we are also presently offering one month free.

For a quote just ring free on

0800 169 6500

If you quote Whimble's branch code, which is **2225190**, we will get recognition for this.

Holiday Insurance is also priced very competitively, and available for the over 65's, please ring for a quote on the above number.

Do not forget to quote our number when applying for any of the insurance deals, every call from one of us will help to keep our Post office open.

Thanking you all for your continuing support.

Jim & Alison

FROM MY WINDOW IN THE SQUARE

Edith Marie-Louise Grout

Now that summer is in flower and nature's hum
Is never silent round her sultry bloom
Insects as small as dust have never done
With glittering dance and reeling in the sun
And green wood-fly and blossom hunting bee
Are never weary of their melody
Round field and hedge, flowers in full glory twine
Large bindweed bells, wild hop and streaked woodbine
That lift athirst their slender throated flowers
Agape for dew falls and honey showers

John Clare in his shepherd calendar always uses simple poetry to describe the beauty of each month and my own enjoyment of simple pleasure. The atmosphere breezes gently with busy bees and in the un-mown grass, summer flowers thrive whilst in the hedge the delicate dog rose, honey suckle and dainty trumpets of white bindweeds fall in elegant cascades of scented mirth. Every year in my conservatory I grow the 'Celestial Blue' Morning Glory, and when I get up it is always the first thing I admire. It gives me great joy and inspiration for the rest of the day. I then venture outside into my garden and listen to the birds. To my surprise I see a butterfly - a 'Painted Lady' - settled on a leaf much warmed already by the morning sun. Not only the days, but life itself lengthens. In summer each dawn is full of joy and elation - these are the only words which can describe such moments of true wonder and discovery. St. Francis of Assisi treated each creature great and small as his family. He would speak to them and encourage them to thrive. He also taught us the delight of simple things. My own Jack, who was a chorister as a boy, sang hymns to make plants grow; it used to be rather charming to hear him in full voice.

What can be said about the month of June except that it is the month of the rose - exquisite shapes, subtle perfume and a rainbow of colours? One single rose can bring happiness. We are enraptured by their charm and surrender to their delicate scent. It is no wonder The Rose has been sung by poets from time immemorial. In ancient Greece to Egypt and Persia, six hundred years before the birth of Christ, it adorned the famous Hanging Gardens of Babylon. It must have been quite a sight under the magical Eastern skies and light. The rose is the 'flower of the gods' and a messenger of love and tenderness. The Mystic Rose or Rose Mariae was believed by the pilgrims to the Holy Sepulchre to have sprung up at every resting place on the flight to Egypt. It is said to have blossomed for the first Christmas, and to have closed at the Crucifixion, only to reopen again on Easter Day. The poet Dante said "The Rose wherein the Word Devine makes itself flesh".

For me, the dog rose is one of my favourites. It grows profusely in Devon at the

sunlit edges of hedgerows and woods. It was called the dog rose because it was formerly believed to cure rabies. In modern times it is generally used by rose growers as a stock on which to graft our beautiful garden varieties. Some well-known specialists also grow them from seed – a very delicate and lengthy way to propagate them. The French poet, Victor Hugo declared that God only made two perfect things:- “The Rose and the Woman”. In medicine, the rose was well known, ‘cakes of roses’ formed part of the apothecary stock in trade and roses are still used profusely in perfumery. I use a shower gel of wine and roses by Lux which refreshes me every day. Shakespeare said “they bring sweetness and magic into our lives”. The rose continues to reign supreme above all other flowers. Nobody will contradict that the fragrance, shape and colouring are unsurpassable.

July is the month of high summer. Now that our gardens are showing signs of colourful bedding plants, I find it is a sense of achievement and fulfilment following a sense of expectancy. On the 15th July it is St. Swithin’s Day and if it rains it will be for forty days and forty nights according to country lore. Swithin was Bishop of Winchester in the 9th Century and we are told that until the cathedral was consecrated a hundred years later, after his death he was buried outside the church and resented the rain falling on his grave. Eventually, a shrine inside the newly consecrated cathedral was erected and his tomb moved in. So perhaps now that he can rest in a dry church, the saying may be obsolete!

As I can’t devote so much time to my garden and croquet lawn I have decided to do something completely different – a ‘relaxed lawn’ looking more like a meadow full of all sorts of wild flowers. Oh, don’t worry about the moss because it attracts birds, I welcome clumps of daisies, primroses, cowslips, violets, celandines, anemones, ajugas and even dandelions. I remember fields of dandelions in my happy childhood up in the Swiss Alps. The blooms of rich golden yellow shining in the bright sunshine reminding me of the manes of lions and when round dandelion clocks of downy seed heads grace the grass I find it fascinating to watch the breeze scattering the delicate seeds around which look like miniature parachutes on the air. On the cover of the famous French Larousse Dictionary is a picture of a dandelion clock with the words “Je seme a tout vent”, i(n other words “I sow the whole world”), and how true indeed, as the Larousse finds its way all over the planet with its wealth of knowledge and most interesting historical information.

I have already noticed that there are more butterflies, bees and masses of birds who find more food than before. I even saw an early ladybird.

Gardening is like life - a little risk and adventure makes the heart beat faster. I know it will take some time to create a new meadow, but I so want to be in tune with nature and gradually include poppies, cornflowers and only cut the grass occasionally after all the flowers have gone to seed and settled in a soft rain into the ground. The uncertain nature of the climate change predicts drier summers and I can’t see any sense in watering lawns for hours. What a waste of millions of people all over the world have not even a drop of drinking water.



The Veterinary Clinic, Whimple

Consultations by appointment. at various times throughout the day
We also offer routine surgery and dental treatment.

For an appointment and for all veterinary enquiries,
please call the surgery on 01404 823230.

Now open all day!!!!!!!

Opening Hours: Monday and Wednesday: 8.45am - 7.00pm
Tuesday, Thursday and Friday 8.45am - 5.45pm
Saturday: 10.30am - 12.00noon

24 hour emergency service 01404 823230

Vale Vets—The Vets Your Pet Would Choose

West One

**Hair Design
01404 814 913**

For Ladies and Gentlemen

**3, The Old Village Hall, West Hill Road, West Hill,
(Nr West Hill Garage) Free Parking**

Ladies cuts	from £8.00
Men's cuts	from £6.50
Children	from £5.00

Our qualifications include Hairdressing NVQ 1 & 2
Diplomas in: Toni & Guy advanced Technical Colouring, Colour Correction,
L'Oreal Colour Keys, Techniques 2000, Cutting and Perming.

Opening: Monday, Wednesday, Thursday, Friday & Saturday.

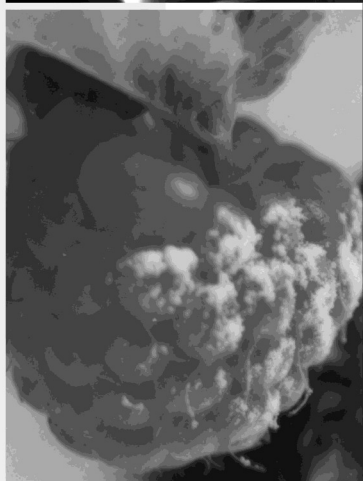
For an Appointment Please call **01404 814913** or Call in for Free Consultation.

whatever the occasion

The Jack In The Green Inn, one of Devon's finest restaurants, is pleased to support the village Magazine The Whimple News.

Our award winning food is prepared with the finest ingredients by our uncompromising chefs.

So from bar snacks to a la carte our sumptuous meals suit every occasion and celebration.



...we'd like you to come and see us

THE JACK IN THE
GREEN INN

Rockbeare, Near Exeter, Devon EX5 2EE.
Telephone: 01404 822240 www.jackinthegreen.uk.com

MILESTONE SERVICES

TEXACO GARAGE WHIMPLE

Welcome to



-o-

GROCERIES - FROZEN AND CHILLED FOODS - FRUIT AND VEGETABLES
WINES BEERS SPIRITS- FRESH BAKED BREAD - HOT SNACKS AND DRINKS
NEWSPAPERS - MAGAZINES & MUCH, MUCH MORE

-o-

**LOOK OUT FOR OUR MONTHLY SPECIALS -SELECTED LINES AT
SUPERMARKET PRICES! (EG. 3 BOTTLES OF WINE FOR £10)**

-o-

JOIN OUR DVD CLUB

(MEMBERSHIP FREE) RENTALS FROM 99P

-o-

PAYPOINT AGENT

PAY YOUR BILLS - TOP UP YOUR MOBILE - TV LICENCE
ELECTRICITY KEY CHARGING ETC

-o-

CASH MACHINE IN STORE

-o-

WE ALSO SELL CALOR GAS - COAL - LOGS - CAR CARE PRODUCTS -
GARDEN STONWARE & COMPOSTS.

FUELS AND OILS AT COMPETITIVE PRICES

-o-

LONDIS at Milestone - Best Value Locally

-o-

OPEN UNTIL 10.00PM (8.00PM on Sundays)

Telephone (01404) 822454



Whimple Primary School

Parents, Teachers & Friends Association

What have we been up to??

Easter Egg Hunt (thanks to Mrs M Burrough for permitting us to use her orchards), Easter Bingo (children and adults greatly enjoyed the return of 'Johnny Bingo'), Easter egg competition squares by the Fountain Inn, Blossom Barn Dance, recycling clothes collection in conjunction with 1st Whimple Scouts and our King/Queen raffle A great spring of events has been enjoyed by the village, thank you to everyone who has helped or contributed by joining in.



Congratulations to Katie Yeoman who has been crowned as our Whimple Queen for 2007. She will officially open our Village day fete on Saturday 7th July. Thank you everyone who helped raise funds in our King /Queen raffle.

Mrs Helen Hudson won a Sunday lunch for four at the JACK in the GREEN INN.

The prize for our Whimple Queen was donated by Music Foundation for Schools.



Continuing to support music in Whimple Primary School

A truly old fashioned tradition has been resurrected in Whimple, by our School Maypole dancers. They performed at the Blossom Barn Dance in the blossom. Thanks to superb efforts by pupils who practiced tirelessly under instruction from parents and teachers, and a great display was given in the beautiful setting of the orchard in blossom. The night continued with dancing, food and merriment. A special thank you to Sue and Julian Wilson for the use of their orchard.

The PTFA will be purchasing materials for a new school craft club and subsidising the school trip this term.

Diary Dates:

PTFA meeting Tues 5th June at 7.00pm in Class 2 at the school, parents, teachers and friends all welcome.

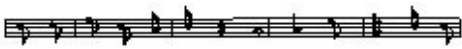
SHREK the THIRD at the Radway Cinema, Sidmouth on Sat 30th June at 4.35pm, tickets on sale from the Whimple Post Office (Thank you again Jim and Alison). Adults £5, children £3.50.

Village Week Sat 30th June – Sun 8th July, with Village Day on Sat 7th July see programme

Our cake stalls are proving popular, after school once a month. With the proceeds we will be having a school BBQ at 3.30pm in the Victory Hall garden for all pupils and staff on Friday 20th July. Class 5 will be having their cake stall on Friday 8th June.

Ladies Fashion Show Friday 21st September, Victory Hall, Whimple 7.30pm, £3.50 entry

Thanks to our headteacher, Mrs. Di Brice. We wish her well in her future, as she leaves Whimple Primary School at the end of the summer term.



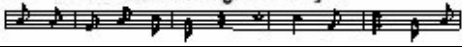
SLACK-MA GIRDLE

for
Ceilidhs, parties, weddings,
Christmas sing-a-longs.
The local band
for all occasions



Tel 823083

Not as interesting as Granny's!



Aromatherapy



Therapeutic Massage



Hopi Ear Candling



*Sally Baker C.H.Ed (Dip Mass)
(Dip Aroma)*

Complementary Medical Association Registered

Whimble

Tel: 01404 822315

Mob: 07870 112071

email: salbaker63@hotmail.com



Heritage Taxis

**At your service
01404 815544**

Tom Vanneck

Furniture Restorer

&

French Polisher

**Modern & antique
commissions undertaken.**

Tel. 01392 860502

Mob. 07812810846

Martyn's Marathon

Many generous people from Whimble and the surrounding area sponsored me to run the London Marathon on April 22nd.

It was hot! Very hot! That's my only excuse. But I did finish in 4 hours 52 minutes in 12,676th place!

The day started with a breakfast of fruit and porridge at 5.45 am and a long coach trip to the start on Greenwich Common.

The atmosphere at the start was pretty amazing with thousands of people of all shapes and sizes preparing themselves for the time ahead, all wearing their charity's colours and applying copious amounts of Vaseline to prevent chafing!!

The start was pretty uneventful, and I crossed the line only 6 minutes after the official start, along with 10,000 others leaving the red start.

The first part was downhill, and went well, passing two guys dressed as Bakewell tarts with ease!! Most of the time it was easy to run, although at some points everyone slowed and I was forced to walk!!! Cutty Sark at 6 miles came and went, accompanied by the bells of the Morris dancer running behind me, and in no time (or 2 hours actually) I crossed Tower Bridge which was halfway.

It was very tempting to turn left at this point cutting out 9 miles and joining the leaders!! I didn't think you'd be happy with that, so I followed the rest into Docklands and Canary Wharf.

All was going very well until about 17 miles when the heat began to take its toll. Being passed by the two Bakewell tarts was a slight low point, but I managed to catch them up again fairly quickly! The next few miles seemed very long, until I got back to the river Thames, and turned past Big Ben with 1 mile to go. Support was great, and the last mile was pretty good. It was a great relief to cross the finish line, and although the time was not as quick as I'd hoped, it didn't matter.

The best thing about the whole marathon is that, thanks to everyone's generosity, we have raised over £4500 for Cancer Research UK. So a big thank you to all the clients of the Vale Veterinary Centre, and others who sponsored me for this ridiculous idea!

Save the Children Collection

We would like to thank all those people who poured money into our collecting boxes in the first week of May when we collected around Whimble for the Save the Children charity.

In fact, as there are only two of us collecting in Whimble we can never cover more than a small portion of the village and this rather frustrates our efforts. If there is anybody in Whimble who would like to get involved in this very worthwhile activity, which happens once a year, then we would be very glad to hear from them at the Station House telephone 822550.

Martin and Marion Gammell

THE PENSION DRAWDOWN COMPANY

INDEPENDENT FINANCIAL ADVISERS

FOR UNBIASED, QUALITY FINANCIAL ADVICE BASED ON YOUR
CIRCUMSTANCES PROVIDING SOLUTIONS TO YOUR NEEDS
INCLUDING

SAVINGS INVESTMENTS PENSION PROVISION
RETIREMENT OPTIONS inc ANNUITIES
LIFE AND CRITICAL ILLNESS COVER INCOME PROTECTION

Contact: Bob Diamond at Waterlake Meadow, Church Road, Whimpe
On 01404 822865 or Email r.diamond1@ntlworld.com
For a free initial consultation

Appointed Representative of The Burns-Anderson Independent Network PLC,
which is Authorised and regulated by the Financial Services Authority

Martha Mockford

Quality kitchens at affordable prices

*manufactured and expertly fitted by our own staff
better value for money than DIY stores*

Also re-fronts & new worktops
Carpets, vinyls and wooden flooring

Complete, friendly service from a local family business

Hotpoint, AEG, SMEG, Franke, Blanco



01404 44189



Parish Council News

The Parish Council's Annual Parish Meeting was held in April and this year we had a speaker from Victim Support. Margaret Clough, from the Newton Abbot central office, gave a very interesting and informative talk about their work.



Victim Support is an independent national charity which provides emotional support and help for the victims of crime. People react to crime in many ways and although most victims don't suffer long term harm, both adults and children can be seriously affected. People who have suffered a crime may need practical information and advice, or simply someone to talk to. Trained volunteers from Victim Support, based in local branches, contact people after a crime to offer free, confidential support and information. People are referred to Victim Support by the police and other organisations, or just contact them personally to ask for help.

They offer a comprehensive service to all sections of the community. They also work for the rights of victims, witnesses and their families and for greater awareness of the effects of crime. Victim Support's Witness Service helps victims, witnesses and their families and friends before, during and after a trial. Trained volunteers based in all Crown Court centres and magistrates' courts offer emotional support and practical information about what happens in court.

Victim Support receives 80% of their funding from the Department of Criminal Justice - the other 20% comes from fundraising. More volunteers are always needed, and they are welcome from all sections of the community. Full training is given for volunteer visitors and court-based volunteers. There are also opportunities to help with fundraising and publicity, office administration, or with translation and interpreting. Victim Support Devon can be contacted on the local rate number: 0845 676 1020.

WHIMPLE

The Perfect Village

“A great community, good amenities and excellent accessibility”



We have a constant stream of enquiries for property of all types in and around Whimple.

ASK FOR A FREE VALUATION

01404 814306

www.redfernsproperty.co.uk

Tim Wright

Whimple Vets Now Open All Day!!!

Vale Vets is your local, friendly approachable veterinary surgery, offering a high quality, caring, compassionate service for you and your pets. We have an experienced team of veterinary surgeons and nurses to offer the highest quality of care.

Practice News

New Faces You will see some new faces at the vets this spring. Ann Dart has joined us as one of the team of receptionists at Whimple. She is joining Myrtle Dockings, Claire Moore and Louise Woodcock. We also have a new small animal vet joining the team. Marie Heald has moved from a practice in North Tawton. She has a particular interest in internal medicine and is studying for a certificate in this field.

Marathon Man! Congratulations to Martyn, who many of you know. He successfully completed the London Marathon and raised over £4,000. Thank you to **everyone** for their support.

New Opening Hours We have expanded our opening hours as we know how busy everyone is, and we hope that by offering all day opening, later evening and extended Saturday surgeries that this will make it easier for you to bring your pets to see us.

We will be open all day Monday to Friday from 8.45am to 5.45pm, with late evening surgeries until 7pm on Mondays and Wednesdays. On Saturdays we will be open from 10.30am-12.00noon. Consultations are by appointment during these hours. Appointments are available at various times during the day

Operating Days Our weekly operating days at Whimple have been very popular. We are expanding this service to two days a week; on Tuesdays and Thursdays. We offer routine operations, including neutering, biopsies, lump removals, ear flushing and dental treatment. This means your pet can be treated without the longer travelling time to Cullompton, thus reducing stress for you and your pet. Our team of qualified veterinary nurses are essential to this service; they will assist the operating vet by admitting your pet, monitoring their anaesthetic and recovery and looking after them throughout their stay. They will advise you about postoperative care, when you collect your pet.

House Visits As well as the services we can provide at the Whimple surgery, we also offer house visits, if you are unable to bring your pet to see us.

Healthy Pets Club At Vale Vets we are not just here for you when your pet is poorly, we believe preventative healthcare is extremely important. Regular vaccination, worming and flea treatments are all a part of responsible pet ownership and lead to healthier happier animals. Optimum nutrition, as in humans, can lead to longer, healthier lives.

All pets brought in for an annual health check and vaccination (in the case of rabbits this will be twice a year) will be eligible to become members of the club. As a member, we will offer discounts on various aspects of preventative healthcare, as well as a discount on out of hours cover, for peace of mind.

24 Emergency Cover We offer 24 hour emergency cover should your pet need help at night. In an emergency, out of normal surgery hours, our own vets and nurses will examine and treat your pets at the Cullompton surgery. If required we can also offer house visits for emergencies. However in many situations it may more appropriate to treat your pet at the surgery.

If you wish to contact the surgery to discuss any of the services above, or for any other reason, please call **01404 823230**

DC DECKING & JOINERY

Quality Carpentry Services

BESPOKE HAND CRAFTED GATES

- *FREE ESTIMATES*
- *MANY REDWOOD DESIGNS*
- *SUPPLY & INSTALLATION*
- *TOTAL SECURITY*

CARPENTRY

- *FREE ESTIMATES*
- *KITCHENS & BEDROOMS*
- *BUILT IN WARDROBES*
- *UPVC INSTALLATIONS*

Many years experience,

Fully Qualified

Large Portfolio

QUALITY DECKING SERVICES

- *FREE DESIGN & PLANNING*
- *QUALIFIED INSTALLERS*
- *TREATED MATERIALS*

JOINERY

- *HAND MADE GARDEN FURNITURE*
- *ANYTHING THAT NEEDS TO BE MADE OR REPAIRED*

For a friendly, efficient & professional service please contact our team

Telephone : 01404 822126 Mobile: 07980 889968 Email: dcd decking@aol.com

WHIMPLE TENNIS CLUB

The Club held its AGM on 29th March
and is pleased to advise members of the following:

- Subs to remain unchanged for the coming year
£20 adult, £10 junior and £45 family.
We will also be introducing a full time student rate of just £15
- PAYABLE FROM 1ST MAY PLEASE (cheques payable to Whimple Tennis Club) to Adrian Rushworth, Bridgefield, Whimple EX5 2QW
- Club Nights will again be Thursdays (7 'til 9) – why not come along
- The Summer Social, which will be open to both members and non-members, is planned for 5th July as part of Village Week. Starting at 5.00pm for junior players. Keep an eye out for more details, or contact one of the committee for information



- New members should contact Judith Imbo for an application form on telephone 823240 or e-mail on danyimbo@btinternet.com We will also leave some forms at the Club for completion and forwarding on
- Your committee contacts are:
Chairman – Miles Leonard 822415,
Treasurer – Adrian Rushworth 823276
Secretary – Judith Imbo 823240

We have just had the court resurfaced and hope that members and guests will enjoy using the facilities over the coming year – Here's to a good year's tennis!



SOLICITORS

The Complete Legal Service for
families, individuals and businesses
throughout East Devon

We will visit you at your home if you wish

For further information and to arrange a
free initial consultation please telephone

**813446 (Ottery)
or 41221 (Honiton)
or David Smith on 822123**

HDR

Records & Pop Memorabilia Wanted

Good prices paid for the following

Records. CD's, Rock & concert Memorabilia

Tour Programmes/ Old Tickets/ Magazines/ Sheet Music



All types of music, large or small collections

Rock - Pop - 50's - 60's - 70's - Punk - 80's

John W Griffiths

Phone: 01404 823480

Mobile: 07836 369740

Email: hdicksrecords@yahoo.co.uk

Whimble History Society



Do you shop on line?

If you shop on line you could create an income for the Whimble History Society with just one extra click of the mouse. When you decide to do some shopping on the web the *first* thing to remember is to go to the History Society website, www.whimble.org

Why? Because when you shop via our website we receive an income from each retailer. This can be a fixed payment or a percentage of your total spend.

You pay exactly the same price as on the retailers main sites, often lower than on the High Street. The commission earned by our webshop comes out of the retailers profit margin - it is their marketing spend.

How to do it:-

All you need to do is click on the banner advert at the head of each page, or the small animated banner to the right of the pages, on www.whimble.org

This will take you to our web-shop where there are numerous and varied retailers to choose from. Simply choose a retailer from an A-Z list, a category, or specific product. The list of retailers is growing constantly and Tesco has recently joined our shop. For example, they will pay us £5.00 for each new customer who registers, and 2% on all non grocery sales from existing or new customers.

Our webshop retailers include: M&S, John Lewis, Waitrose, Thomson, Amazon, HMV, CD WOW, Gamestation, Game, LX Direct, Hertz, Mothercare, Reebok, Waterstones... and many more.

Remember - even if you don't have a computer you will probably know someone who has. Ask them to shop for you and save your bus or train fare or fuel costs!!

Check out our webshop on www.whimble.org - NOW!



★ DRAIN-WIZARD

Pitch Fibre Specialists
Drainage & Light Plumbing Services

24 Hour Emergency Service

Blockages, Jetting, CCTV, Repairs, Lining,
Renewals, Septic Tank & Soakaway
Problems, Toilets, Ball Valve & Leaks

Tel: Whimple (01404) 822913

Mobile: 07815 064669



Berry Farm



Apple juice, Cider, Eggs, Pork,
Fruit & Vegetables

Please call Jenny on 01404 823930

Or visit us in Clyst St Lawrence



Ford Simey
Solicitors

**Make a Will
and we will donate half our costs to your
Church or a charity of your choice**

**For a straightforward Will we charge £80 and for husbands
and wives "Mirror Wills" we charge £100 plus VAT.**

We will donate £40 and £50 respectively

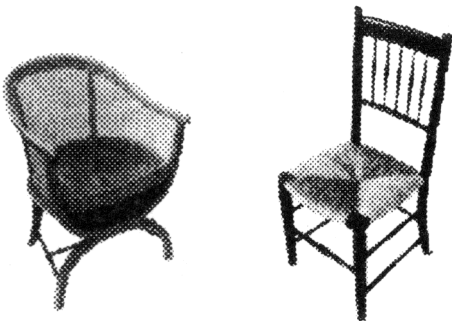
For full details call

Victor Donson on 01392 274126

8 Cathedral Close, Exeter EX1 1EW

www.fordsimey.co.uk

**CHAIR CANING
RUSH SEATING
SKEINED WILLOW**



Tel: 01404 822422

Higher
Slewton
Whimple

Rosemarie Burrows



**For all aspects
of professional
tree care & tree
management**

- 
- Dismantling
 - Pruning
 - Hedge Cutting
 - Planting
 - Reductions & Re-shaping
 - Supplier of wood chips
 - Fully Insured to £5 million
 - All work carried out to BS3998 standards
 - Call now for a free competitive quotation

Proprietor: Matthew Shute
11 Cunningham Road • Exmouth • EX8 4DS
Tel: 01395 279101
Mobile: 07968 741251
Website: www.eastdevontreecare.co.uk

Whimple Church

GARDEN

FETE

Saturday 9th June
2.30pm

Hindstrete
Church Road

Cream Teas . Stalls . Competitions

Maypole dancing by Whimple School

Admission Free
In Victory Hall if wet

BARRY SEAFORTH DECORATING SERVICES

Est 1979



PAINTING WALLPAPERING
SPECIALIST FINISHES MURALS TILING
COVING CARPENTRY ALTERATIONS
REFERENCES AVAILABLE

Call Barry 01395 513729
Free Estimates



Little Cot
Hembury Fort
Honiton
Devon
EX14 3LE

Tel
01404 841699
Mobile
07976725516

M P SMALL ENGINES Mike Persey

SERVICE & REPAIR TO

**All makes and types of
Horticultural / Garden
Forestry and Small Agricultural
Machinery**

**Specialist in the repair of older
Machinery and Sports Club machinery**

Makeovers and rebuilds undertaken

New machinery at competitive prices

Collection Service

PETER COSSLETT

**CARPENTER AND BUILDER
QUALITY WORKMANSHIP**

**KITCHEN FITTING
DOORS AND WINDOWS
TIMBER CONSERVATORIES
EXTENSIONS AND MINOR**

**BUILDING WORKS
COMPETITIVE PRICES**

&

FRIENDLY SERVICE

Tel: Whimble (01404)823279

Mobile: 07768 436042

S.H. DANIEL

ELECTRICAL CONTRACTOR

CROCKERNHAYES

WHIMPLE

PRIVATE ADDRESS

Malham House

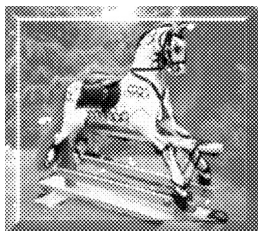
Awliscombe

Devon



BANFIELDS

*Traditionally carved rocking
Horses & Restoration*



18 Rectory Close, Whimble,
Devon EX5 2UF

Tel 822162

E-mail Banfieldgew@msn.com

D. GARLAND

**Specialist in
Built in Furniture,
Carpentry and
Joinery**

DG

**10 Elliot Close
Ottery St Mary
Devon**

EX11 1GZ

Tel: 01404 811465



Longfield Cattery

heated single and double chalets
personal care and attention



(now also looking after small animals)

01404 822275

Longfield ~ Church Road ~ Whimble ~ Exeter ~ EX5 2TF

"Learn a life skill with a Professional"



J.C.Ball



Driving Standards Agency Approved Driving Instructor

- FREE:- First hour for beginners
- FREE:- Loan of Videos and Books
- FREE:- Pickup in Exeter & East Devon

2 Manley Close
Whimble
Devon
EX5 2UG
(01404) 822764

Refresher and Motorway Lessons

"Safe driving for life"

Compassworks

MOOR THAN NAVIGATION

WOULD YOU LIKE TO:

Learn to map read / develop existing skills?

Learn by practical experience?

Learn from specialists in a friendly atmosphere?

Know more about GPS and Navigational Software?

Find out what else COMPASSWORKS has to offer?

Tel: (01566) 783236 / 07711 055961

www.compassworks.co.uk

For all your daily requirements
of
MILK, CREAM, EGGS, FRUIT JUICE,
NEWSPAPERS & MAGAZINES
POTATOES, FRUIT & VEGETABLES
PET FOODS & REQUIREMENTS
AVAILABLE AT COMPETITIVE RATES

Delivered to your door

Please contact

VICTOR AND MARIAN DANIEL

Summerbridge, Whimble, Devon

Tel: Whimble 822458





**WHIMPLE
VILLAGE WEEK
2007**

29TH JUNE TO 8TH JULY

VILLAGE WEEK EVENTS

FRIDAY 29th JUNE

- Party in the Park - Small Park in Tan Lane Playground 6.30pm
(WAC4Y – Contact: Jenny 823015 or Liz 822389)

SATURDAY 30TH JUNE

- Heritage Centre Open 10am – 3.30pm (History Society)
- Shrek the Third - Premier - Come and see part 3 of the hilarious Shrek series at the Radway Cinema, Sidmouth 4.30pm doors open - Film starts at 5.15pm
Adults £5 children £3.50 Tickets from the Post Office
(PTFA contact Justin 823873)

MONDAY 2ND JULY

- Darts Competition at the Thirsty Farmer at 8.00pm
(Contact: Mr Arthur Iball 822905)

TUESDAY 3RD JULY

- Walking Treasure Hunt at the Heritage Centre at 6.30pm
(History Society contact: Roger Smith 822244)
- Skittles at the Thirsty Farmer at 6.00pm

WEDNESDAY 4TH JULY

- Village v Cricket/Football Club, with barbecue at the Cricket Club at 6.15pm with live music from KODY kindly sponsored by the New Fountain Inn.
(Cricket Club & Football Club Contact:: Ben Silk 822389 or Roger Smith 822244)
- Skittles at the Thirsty Farmer at 6.00pm
- Sponsored Bike Ride meet at the Parish Field
(WAC4Y and Youth Club Contact Liz 822398 or Mino 823897)
Information and sponsor forms available from PO & Village Shop

THURSDAY 5TH JULY

- Skittles at the Thirsty Farmer at 6.00pm
- Whimple Tennis Club open evening at the Tennis Club to include:
Children's Coaching at 5.00pm and informal Adults Tournament at 7.00pm,
Quiz available from PO on the night.
Results on Village Day Food and Drink for all.
(Contacts - Judith Imbo 823240 or Miles Leonard 822415)
- Bingo at the Victory Hall at 7.00pm for 7.30pm eyes down
(Young Farmers Contact: Phil 07816331409)

FRIDAY 6TH JULY

- Plan B (Live music) at the Thirsty Farmer

SATURDAY 7TH JULY – VILLAGE DAY - see facing page

SUNDAY 8TH JULY

- Songs of Praise at St Mary's Church at 6.00pm
- Quiz Night at the Thirsty Farmer at 8.00pm

VILLAGE DAY

Saturday 7th July

STALLS IN THE SQUARE

from 8.00am to 12noon

Victory Hall Contact: John Discombe 823614

BREAKFAST available in The Square

FUN RUN Registration from 9.00am - Race starts at 10.00am from The Square (PTFA contact: Ann Daniels 823304).

Application forms from the Post Office or School

BELLRINGING 9.15am at St Mary's Church

REFRESHMENTS in St Mary's Church 9.30am - 12.00noon

HERITAGE CENTRE OPEN 10.00am - 3.30pm (History Society)

THE CHURCH FLOWER LADIES ARRANGEMENTS St Mary's Church

SOUP AND SARNIES at the Village Hall 12.00noon - 1.30pm

FANCY DRESS 1.30pm in the Victory Hall (PTFA)

VILLAGE DAY FAYRE

at the Parish Field 2.00pm - 6.30pm

- **FETE STALLS** (PTFA)
- **FUN FAMILY DOG SHOW**
(sponsored by Halls Estate Agents and Vale Vets
contact Sally 823228)
Schedule available from the Post Office
- **CHILDREN'S GAMES** Pony Rides Bouncy Castle
- **REFRESHMENTS** Beer - Cider - Wine Marquees - Teas
- **LIVE MUSIC**
- Young Farmers **TUG OF WAR** and Adult games - Raffle

AUCTION OF PROMISES

at the Victory Hall

at 7.00pm - bar and nibbles 8.00pm start - £1 entry
catalogue available from the Post Office or the Village Shop
(Whimple Pre-School)

**Massage Taster Session
with Sally Baker**

Thursday 5th July 9.30 - 12pm 1pm - 3pm
And Friday 6th July 7.30 - 9.30pm

Appointments contact Sally 822315

**Throughout the Week
HDR Records Village Week Pop Quiz**

Quiz book available from P.O, Village Shop
and HDR Records at £1

First Prize £20 plus an MP3 player

Second Prize £15

Third Prize £10

Contact John Griffiths 823480 or
07836369740

WHIMPLE CHURCH



Saturday 9th June 2007
2:30pm
at Hindstrete, Church Road

Bric-a-brac—plants—craft items—
cake stall—home produce —draw
prizes—books— hoopla—toys
and much more!

SUMMER COFFEE MORNINGS

12th May to 15th September*
Saturdays - 10:15am - 12:00pm



You are warmly invited
to join us in the Church
for coffee, tea & home made cakes



Saltmine Theatre Company is performing **The Cross and the Switchblade** at the Barnfield Theatre on Tuesday 3rd & Wednesday 4th July (£10 / £7.50).

David Wilkerson's book has been described as the greatest inspirational true story of all time. "Wilkerson's desire to help those rejected by society and then see God radically transform them is as relevant today as it was 50 years ago."

If you would like to join a church group trip to the production, please contact Kate Hamilton (823201).

Friday 15th June 2007
Friday Night Experience ('FNX')
in Exeter is a great event for
youth (11-18) with music, visuals
and Christian teaching.

If you would like to join the
Whimple Church youth groups
(IMPACT & CONTACT) attend-
ing the event please telephone

Whimble Women's Institute

The April and May meetings give a good illustration of the variety of topics and activities covered by Whimble Women's Institute. In April three of our members gave a cookery demonstration, with an excellent variety of easy to produce dishes. The proof of the food was in the eating! We all had the opportunity to taste the delicious produce and compliments were paid to the three cooks, Ann Bowden, Rosemary Horrell and Annie Hindle.

Later in April several members attended the Devon WI Spring Council Meeting held at the University Great Hall.

In May there was a discussion on the National Federation's resolution calling for an end to the closure of community hospitals. Sarah Dent, the Locations Business Manager for Ottery St Mary and Honiton hospitals, spoke on the role of community hospitals in our locality and answered a number of questions. Rowena Wheeler then gave a report of the Devon Federation meeting. Following the serious part of the meeting we were entertained by Liz Roberts' version of 'Who wants to be a millionaire'.

If you would like to join us or want more information just contact Ann Bowden (tel. 01404 823450) or come along to one of our meetings held in the Victory Hall on the second Tuesday of the month.

Rosemarie Burrows



Summer Holidays
*
Winter Breaks

LOWER SOUTHBROOK FARM

Holiday Cottages

Southbrook Lane

Whimble

Exeter

EX5 2PG

Tel:01404 822989

"Enjoy the peace and quiet of the Devon countryside.... space for the children to play"



Central Heating
*

Colour Television
*

Swimming Pool
(Heated May to Aug)



Proprietors

Angela &

Stuart

Lang





TAYLOR MADE DRIVING

Beginners

Pass plus

Pre 17 lessons

Refresher lessons

Diamond advanced driving

Motorway driving

Theory & Hazard Perception Tuition

Male & Female instructors

High 1st time pass rate

Patient, Friendly & fun tuition

A local independent driving school

Teaching local people to

“DRIVE FOR LIFE”

CALL FREE 0800 652 66 69

Andrew & Jill Taylor



WHIMBLE PRE SCHOOL

GARDEN PROJECT

We would like to update you on the work we have been doing at pre-school. With fundraising money we have made some improvements to our garden. One hot sunny Saturday a few pre-school mums and dads made their way to the garden and began work putting in a new pond, digging the beds ready for new top soil and planting new pots.



One of the dads, Peter Cosslett, even turned up with half his work shop!! He put together some wooden boxes around the vegetable plots to enable us to raise the beds and make it easier for the children to do their planting. We had a fantastic day and the garden looks great now. Thanks to the hard work of everyone who helped and to everyone who has supported our fundraising events. I would also like to thank Martin Crew for donating the new top soil to go in our beds and the new logs for our natural area by the pond. Thank you also to Vale Veterinary Clinic for their kind donation which we put towards the garden project



By the end of the day Jo was deliriously happy with the results!!



VILLAGE DAY EVENTS - SATURDAY 7TH JULY 2007

Fun Family Dog Show - 2.00pm - Parish Field - rosettes/certificates/doggie treats/poop scoops (show schedules & entry forms will be available mid June at Vale Veterinary Clinic and Whimble Post Office).

Auction of Promises - Doors open 7.00pm, auction starts at 8pm - Whimble Victory Hall - licensed bar & fantastic auction lots on offer including photographic sittings/meals/brewery trips/dog walking/baby sitting/website design/signed books/Carswell Farm Cottages Winter Break/organic veg boxes/hypnotherapy session to name but a few - approx 60 lots on offer so please come along and join us for a fun evening. Catalogues will be available from mid June.

Thank you.

Sally Young, Chairperson.

This little piggy went to market...



this little piggy stayed home...
and ordered everything online from
Own!



For food that's
Local, fresh, convenient, delivered.

www.ownonline.co.uk
or contact Dave, Keith or Sue on 01392 832000



Simon Turner

Independent Financial Consultants

For

Independent Advice

on Pensions

Mortgages

Investments

Life Assurance

Inheritance Tax Planning



Tel : **01404 822587**

For free initial consultation

Cantilena

is celebrating
with a
20th Anniversary Concert

Friday 22nd June, 7.30 pm
St. Mary's Church, Whimple

Ian Sutherland - Musical Director
Jonathan Watts - Accompanist

A mixed programme of music sung by the choir,
selected from our repertoire over the last 20 years

Tickets :- £5 - adults, £1 - children
Available from Whimple Post Office
Proceeds in aid of St.Thomas' Lupus Trust

Having always received a warm welcome in Whimple, we
invite you to join in our celebrations.

“DUST TO DUST....”

GOINGS ON AT THE STATION HOUSE, Part 3



“What are you doing?” asked a lassie come to catch a train, poking her head through the open window, and braving the clouds of plaster dust billowing out through same. Quick as a flash, the plasterer shouted “We’re converting it to a cinema”. For a millisecond, I found myself thinking what an excellent idea that is: it’s a big space and it might start paying for itself....We could show endless performances of “Brief Encounter”....Or we could turn it into a tearoom and call it “Brief Encounter”..... At this point Reality tapped me on the shoulder and reminded me that such a scenario had already been here, got the T-shirt, and gone.

At last, we have our beautiful loft bedroom with fancy en-suite (did you know we can close the Velux window from the platform, using the remote control? What useful things modern technology makes possible) and we have turned our attention to the ground floor rooms. It was time to give “the Big Room” a quick paint job. Ha! Many of you will remember it as the tearoom, and before that as the area combining the ticket and parcels offices, the waiting room and the passageway onto the platform. So, it *is* – well - Big. Marion and Richard had converted it into a comfortable living room and all we wanted to do was fill in an old doorway and move the great wooden wall with the ticket windows back to its original position between the front door and the window. That, however, would mean a new ceiling as moving the partition would bring a lot of old plaster down. Time to go and see friends, while the first clouds of dust began to fill the room.

This was a sensible decision: although the doors were firmly taped, the dust seeped in everywhere, but at least we avoided those first hopeless days when you feel you *ought* to keep the duster flying. We returned at the “do it only if you know someone’s coming round” stage. Later, of course, comes a final stage: “I don’t care if The Queen calls, I’m not ***** doing it!”

We returned to find the *walls* bare of plaster too. As the ceiling had come down, the beautiful mouldings had come away. The plaster on the walls had also blown, so everything had to go. Then the builder began to look at the floor. Our plan had been to have the great chunky boards taken up and refurbished. But even chunky boards cannot resist the Demon Damp and we found the rot which had consumed the joists in the dining room had spread. Thus, for a few weeks, our Big Room has been a floorless barn. As I write, we have new joists, the ceiling is awaiting a final skim, the walls have been smothered with chicken wire and then rendered, and are now waiting for the tanking coat to dry, so there is Hope.

Fortunately, even these dust clouds have had a silver lining, and some of you might have noticed a little bit of history one day in early May, when it suddenly

became possible to step straight onto the platform through the great doorway, as in the old days. This came about when the builder attempted to sort out the sill on the huge window which replaced the door. The wooden “wall” beneath the sill crumbled away and most of the glass went with it. “Sorry”, he said, through the pasty he was enjoying on the platform seat, in the sunshine. We didn’t mind. It was lovely to peel back forty years, and, even better, to have a solid brick wall now where some dubious plywood had been before.

But we are fed up with the damp problems everywhere, and we have begun to look seriously for the root causes. After all, we have lived in houses of this age before and only encountered minor problems. Why should the Station House be *so* sodden? The answer began to dawn on us one dark and stormy night with a good old south westerly doing its best to beat us into submission. The TV was off and we became aware of a trickling noise by the window. Braving the elements, we made our way to the platform and watched the water flowing towards the house and pouring through the airbricks down into the basement. There, the clay subsoil prevents it soaking away. Instead, it is absorbed by the brick support walls, rises to meet the old untreated joists, and then settles in to munch its way across the floor. If the boards were not over an inch thick, someone would have had a surprise visit to the “cellar” long ago.

Right. Immediate cause found. But *why* does the water flow towards the house? This would not have been part of Sir William Tite’s plan. We immediately thought of our problems in the garden, where so much tarmac had to be dug out and new drains laid. The tarmac –as you might recall from a previous chapter in this saga – had been generously donated by rail contractors after they had resurfaced the platform. And there we have it! Every time the platform has been treated, the contractors raised the level. They attempted to keep the airbricks clear, and a gentle slope *upwards* was then engineered towards the general height of the platform thus creating a perfect excuse for the rainwater to take the line of least resistance and run towards the house and right through the airbricks which had been left level with the surface!

Now we must give praise where it’s due. Within a month of our contacting the lovely station manager at Salisbury, she had South West Trains dealing with the problem. As I write, we have safety fences across the front of the house and about 9 inches of tarmac has been dug away from the walls, ready for drains to be installed. This is great news for us, of course, but readers will also be happy to see a long-buried feature come to light: the stone doorstep to the platform has literally been dug out and will remain uncovered. I think it will look grand with a new flower trough.

So we end this chapter of the saga on a light-ish note. We might still have only ten square feet to sit in, and just a corner of the dining table to eat at, but we have triumphed over the mighty railway beast and uncovered a little bit of history. As for the damp in the walls at ceiling level – well, that’s another story for another day.

Marion Gammell

**FOR ALL YOUR
SEWING REPAIRS**

**&
ALTERATIONS**

No job too small

**Also dressmaking, table linen
& Personalised machine
embroidery**



Call Molly on

Office. Tel 01392 460970

or 07748 985830 evenings,
Wednesdays or Sundays.

14 Bramley Avenue, Off Lower
Hill Barton, near to the Met
Office

CPM Plumbing & Heating



Your Local
Plumbing
& Heating Service



**Registered
Business**

205961

Repair & Servicing of Oil Gas & LPG
Heating Systems Boilers & Appliances

Using Hi-Tech Analysing equipment

Fully Insured - All work guaranteed

No Job Too Small - Free Estimates

CORGI & OFTEC Registered for all appliances

For a friendly professional service call:

Gary Clarke

Phone: 01404 822523 Mob: 07812013434
Garlands, 3 Dince Hill Close, Whimble

MASSAGE

in Whimble

FOOT MASSAGE

HEAD MASSAGE

BODY MASSAGE

(Half- or one-hour sessions)

Book your appointment with Lucy Ambler, Dip APNT

on **07808-720577**

The District Council Election May 2007

I would like to thank all those electors of Whimble who supported me in the election on the 3rd of May, as well as those people who actively campaigned on my behalf. It was an exciting and close fought campaign, which in the event, went to a recount as the difference in the number of votes between myself and Andrew Dinnis was so small. I would also like to thank Andrew for a good natured and fair campaign and I am confident that he will now serve the electors of Whimble and Talaton as assiduously as I had intended to do if I had been elected.

As a result of the campaign I feel that I have increased the number of friends and acquaintances that I have made in Whimble. I certainly intend to keep in touch with the people that I have met and I look forward to the next election.

Martin Gammell

Whimble Victory Hall

Soup and Sarnie Lunch



12.00noon until 1.30pm

on Saturday 16th June

Village Day Saturday 7th July

and Saturday 28th July

Come and Join us

for further details ring John 823614 or Pam 822262

Whimble Victory Hall

Our new bookings secretary is Alison Tierney.

To check availability and make your booking please contact Alison on 822724.
Booking forms can be obtained from the Village Shop or Post Office

WHIMPLE AND DISTRICT VILLAGE PRODUCE ASSOCIATION

The Great Whimple Plant Sale certainly followed on from the popularity of previous years with another very successful morning in the Village Hall on Saturday 12th May. The Victory Hall was once again full with all kinds of plants and it really was an impressive display, even if I say so myself! We certainly had the most varied selection of plants that we have ever had and it was difficult to get them all on the tables for people to see. By 11.00am it was quite a different story as all of you who had come along at 10.00am had snapped up a lot of the bargains to be had. It was very rewarding to see so many people there and it was an extremely busy morning. This year we had more plants than ever and even those people who could not make it early were able to select from quite a range of plants. We are very grateful to everyone who brought plants along but especially to Lilian Braund and Barbara Lambert for the more exotic plants that they kindly brought. The money raised will go towards the costs of running this year's Flower Show and we will also be looking to do another project to improve the village.

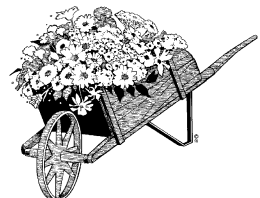
The schedules will soon be available for this year's Flower Show on Saturday 11th August and some will be delivered to regular exhibitors. For those of you who haven't exhibited before, copies will be available at the Whimple Stores and the Post Office. There are classes for everyone so don't be afraid to have a go. If you have any queries about what to enter or even how to enter, please ring one of the numbers on the schedule and we will do our best to help. For those of you who are eager to start thinking about the Photography Section, here is the list of Classes for this year:

- 0701 – Print – Trees or Nature (without a dominant man made feature)
- 0702 – Print – Bikes or Bikers
- 0703 – Print – A Humorous Subject, a caption or “speech bubble” may be used
- 0704 – Print – Architecture
- 0705 – Print – Wildlife or Pet photograph
- 0706 – Print – Fairs or Fetes

All prints can be either in colour or black and white and the maximum size for every class is 6” x 8” or for those who prefer, 150 mm x 200 mm!! All prints to be unmounted please.

Once again we are looking to another excellent show, but then that is down to all of you to enter. There are different arrangements for getting the entries in, and all the information is in the schedule so please read it carefully. If you haven't made a note of the date, it is Saturday 11th August, so we are looking forward to another good show and of course lots more new exhibitors.

Paul Wilson,



EXETER CARAVAN CENTRE

For Sale - pre-owned caravans
also caravans sold on owners behalf.
Caravans always bought and sold.

01404 822116

or

07985 179399

London Road, Whimple



SOFT FURNISHINGS & TRADITIONAL UPHOLSTERY

Loose Covers to Recovers
Cushions to Footstools
Headboards to Bedding
Curtains—Blinds—Pelmet
Swags & Tails
And much more

Jo Harris 01884 277519

Trimeasy

*Your Local Interior Decorating
Service*

Our award winning company has the expertise to provide fast professional workmanship, including stripping existing wallcovering, surface preparation and hanging all types of paper. Ceilings, Skirting Boards and Door painting.

No job too big or small.

Free no obligation estimate.

*Contact Alec Janaway to discuss your
requirements.*

"Mellifera" Church Road
Whimple, Devon. EX5 2TF
Tel/Fax: 01404 823019



Reg no: 4094



O'DELL PLUMBING & HEATING

Tel: 01404 811773 Mobile: 07974 818833

FOR ALL TYPES OF GAS AND OIL HEATING INSTALLATIONS.

BOILER SERVICE, REPAIR & BREAKDOWNS.

BATHROOMS & SHOWERS.

UNVENTED HOT WATER SYSTEMS

Garden Design and Construction
from a single border to a total make-over

**A PROFESSIONAL SERVICE WITH EXPERT
PLANT ADVICE - FREE CONSULTATION**



Golden Leaf
L a n d s c a p e s

Louise Turner N.D. Hort

Robert Mogridge R.H.S. Cert Hort

Tel 01392499074 Mob 07811781137

e-mail: info@gardenlandscapes.co.uk

www.gardenlandscapes.co.uk

Your vision for Whimple - the next steps

At the time of writing, a survey report - summarising the statistics and comments received in the questionnaires - is being finalised with the printers and a copy will be circulated to every household as soon as it is available. The report also contains suggestions for possible actions to improve community life, village facilities and the environment of Whimple

There will be an **Open Meeting** on **Tuesday 19th June** in the Victory Hall at 7.30pm at which a presentation will be given on the outcome of the survey and you will have the opportunity to comment on the suggestions to be developed into an action plan. A speaker from the Community Council of Devon will also attend to provide information on the various services they provide for community groups. Refreshments will be provided.

Please come - it has to be *your* Plan.

Mike Ellingham



Chimneys Wood Burners Fires



Swept, Installed, R
Lined and Built
"All your chimney needs"

Alf Butler

Tel: 01404 811843

A fully insured and HEATAS
registered Company

ARK POTTERY

STUDIO, SHOP & GALLERY

**Wide choice of affordable
pottery direct from the potters, all
designed and made on site. Also
sculptures, pictures and cards.**

ENTRANCE & PARKING FREE

- Have a go on the wheel!
- Pottery Parties
- Commissions
- Team Building Groups

Find us just off the Ottery/Sidmouth
Road at Wiggaton (Follow the brown
tourist signs from Ottery.)

OPEN DAILY 10 a.m.- 5 p.m.

Tel. 01404 812628

email:ark.pottery@btopenworld.com



What could you do with ten minutes of your time?

'The Mortgage Makeover'

Ten minutes is all it takes to determine if you're paying too much for your mortgage.

Ten minutes is all it takes to see whether we can save you thousands of pounds.

Ten minutes is all it takes to decide whether you can afford to pay your mortgage off early.

Ten minutes is all it takes for impartial, independent financial advice.

Contact Stephen Clare on 01404 823375

or email – stephenclare@thinkpositive.co.uk

or by post - Longfield Whimble EX5 2TF





A Grand Day Out

If for some reason you happened to be looking out of your window at 6.45am on Sunday 15th April you may have been surprised to see 40 or so bleary-eyed Whimble folk heading for the village square.

The purpose of this early morning assignation was to board a coach bound for Twickenham to watch the Exeter Chiefs rugby team play in the EDF Trophy against the Cornish Pirates, followed by the Leicester Tigers and the Swansea Ospreys playing for the EDF Cup.

An uneventful run up to Twickenham, slowed only by the other 80 or so coaches pouring out of Devon and Cornwall meant we were parked up in the shadow of the stadium by 10.30am. With the sun shining, the bars already open and the promise of 2 great games of rugby the day was shaping up well.

Twickenham did not disappoint.

The atmosphere was fantastic and with 10,000 Chiefs and Pirates fans in attendance it was impossible to go more than a few steps without spotting someone you knew. The Falmouth Marching Band played their hearts out and the Welsh fans sung their hearts out helping to make for some very memorable moments throughout the day. Rival fans chatted and drank together, the police presence was minimal and even that was not needed.

The Chiefs played a great game and looked for most of the match as if they would be bringing the trophy home but the Pirates were having none of it. They dug in for the last part of the second half and despite some great play by the Chiefs secured a 19-16 win.

The dreaded journey home turned into a musical extravaganza, with Grease playing on the coaches DVD it is fair to say we sung and danced our way back to Whimble. Camilla Whitton, dancing queen you are indeed a legend on your own bus. Thank you for organising transport and thank you Nick Evans for sorting out the tickets.

It was indeed a grand day out.

Viv Leonard

PS I would also like to thank Jeremy Wilson from those of us who now know that the old wives tale about beer being good for the hair really is true!



PARTY TIME?

**Family Celebrations,
Milestone Anniversaries**

Marquee de ParTee

**Pretty Party Marquees and
Pavilion Tents hired for
*Your Special Occasion***

**Complete service for tables
chairs carpets lighting etc.**

**introductions to
Caterers & Hogroasters**

Philip & Angela Crisp

Kennford, Exeter.

01392 83 27 75

OR Visit us at:

www.marquee-de-partee.co.uk

The Jays



The Square, Whimble. EX5 2SL

Jan and John offer a friendly and relaxed stay at the Jays.

Close to Exeter Airport for which transfers are available

Colour TV in all bedrooms

Guest Lounge with tea/coffee.

Several local Pubs and Restaurants within easy reach -(pick up service)

Bed and full Breakfast menu:

£20.00 per person per night.

No smoking.

Phone: 01404-823614

Fax: 01404-823629

e-mail: jaydiscombe@supanet.com

OAKS & PARTNERS

AUCTIONEERS & VALUERS

invite entries for their regular sales of antique & later furniture, porcelain, silver and plate, jewellery, metalware, paintings & prints and items of general interest at

The Old Tannery, Exeter Road, Cullompton

[We're easy to find on the Honiton side of Junction 28 of the M5]

The saleroom is open for receipt of items for sale
Monday to Friday between 9.00 am and 4.00 pm
Bring items along for valuation on a Friday morning

We will be pleased to call to your home
to discuss valuations without obligation or collect items for sale
Individual items to full house clearances

Tel 01884 35848 for further details or **01404 - 814540 / 812356** after hours
We will attend Sandfords, Whimble (by kind permission of Mrs Pratt) from 10.30 to 11.30am
on the first Wednesday of each month to discuss valuations or collection of items for sale



WHIMPLE

PRIMARY SCHOOL

Our Head teacher, Mrs Di Brice, will be leaving the school in July, after 13 years, to work for the Local Education Authority. Many of you who are no longer associated with the school will remember her, so we will be organising an opportunity for everyone to join us to say goodbye and good luck at the end of term. Please look out for the details.

We are delighted to have appointed a new Head teacher, Mrs Susie Langley, who will be joining us in September.

Pam Scanlan

Chair of Governors.

Historic Buildings

Advisor on Conservation Repair / Sympathetic Alterations

Vernacular Buildings- Assessment, Proposals & Options

Listed Buildings- Planning Applications & Building Regs

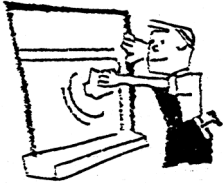
Michael Board
Building Consultancy Ltd

Modern Buildings

Little Cot
Hembury Fort
Honiton
Devon
EX14 3LE
Telephone
01404 841699

Design Service for New Build Home Projects

Extensions and Alterations to Properties- Designed & Drawn for Planning/Building Regs



WINDOW

CLEANER

PAINTING & DECORATING
TILER

PATIO PRESSURE CLEANING

SHED ROOFS - RE-FELTED

GENERAL HANDYMAN

(Excellent references if required)

For that personal service

Phone Mr Evans on 01404 822120

N C HAMLYN

FARM MACHINERY
REPAIRS AND SERVICE

(Welding, fabrication etc.
and garden wrought iron work)

Workshop facilities and mobile
service

Contact Nigel Hamlyn on 01392
466720

or 07702 431244 (mobile)

Paynes Farm
Broadclyst

Tree & Hedge Planting & Aftercare ●

Contract Work ●

Garden Maintenance ●

Herbicide Application ●

Chainsaw Crosscutting ●

Strimming ●

Brushcutting ●

Call Daniel On:
07974 385834



DRM
WILLIAMS
TREES & GARDENS

WORKING WITH

PERRIE HALE
FOREST
NURSERY



M.J.COLES ENGINEERING

(R.T. I.T. B. & CITY & GUILDS)
SERVICING. ENGINE RE-BUILDS .

WELDING MOT. RECOVERY.

PICK UP SERVICE

FRIENDLY LOCAL MECHANIC

15 YEARS EXPERIENCE

FOR ALL YOUR MOTORING NEEDS

CALL

MARC

ON

WHIMPLE 822095 OR
07785 740473 (MOBILE)



SOME DO'S AND DON'TS

Lock your car every time you leave it, even on your own drive or property. In a garage is best, and lock the garage.

If you see signs of a break-in at your home, like a smashed window or open door, don't go in. Go to a neighbour and call the police.

If you are selling your home, don't show people around on your own. Ask your estate agent to send a representative with anyone who wants to view your house.

When you answer the phone, simply say 'hello'; don't give your number. If the caller claims to have a wrong number, ask him or her to repeat the number required. Never reveal any information about yourself to a stranger and never say you are alone in the house.

If you receive an abusive or threatening phone call, put the receiver down beside the phone, and walk away. Come back a few minutes later and replace the receiver; don't listen to see if the caller is still there. Don't say anything - an emotional reaction is just what the caller wants. This allows the caller to say what he or she wants to say, without causing distress to you. If the calls continue, tell the police and the operator and keep a record of the date, time and content of each phone call. This may help the authorities trace the caller.

If you often walk home in the dark, get a personal attack alarm from a DIY store or ask your local crime prevention officer where you can buy one. Carry it in your hand so you can use it immediately to scare off an attacker. Make sure it is designed to continue sounding if it's dropped or falls to the ground.

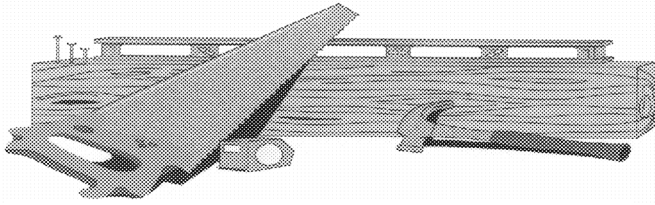
Carry your bag close to you with the clasp facing inwards. Carry your house keys in your pocket. If someone grabs your bag, let it go. If you hang on, you could get hurt. Remember your safety is more important than your property.

If you think someone is following you, check by crossing the street - more than once if necessary - to see if you are followed. If you are still worried, get to the nearest place where there are other people - a pub or anywhere with a lot of lights on - and call the police.

If you regularly go walking, jogging or cycling, try to vary your route and time. Stick to well-lit roads with pavements. If you wear a personal stereo, remember you can't hear traffic, or somebody approaching behind you. Walk facing the traffic, so a car cannot pull up behind you unnoticed.

If a car stops and you are threatened, scream and shout, and set off your personal attack alarm if you have one. Get away as quickly as you can. This will gain you vital seconds and make it more difficult for the car driver to follow. If you can, make a mental note of the number and description of the car. Write down details as soon as possible afterwards.

John Munslow 01404 823456



fencing, pergolas, gates, trellis
and sundecks.

01404 823002

free estimates and over 25 years of quality
workmanship
also patios, and brickwork.

**P. R.
S
M
I
T
H**



JOIN US AT

ANDY'S RESTAURANT

PART OF THE INTERNATIONAL SWIMMING SCHOOL, STRAIGHTWAY HEAD, WHIMPLE
A LA CARTE MENU

BAR SNACKS

PARTIES CATERED FOR (UP TO 30 PEOPLE) - CREATE YOUR OWN MENU

SUNDAY LUNCHES

CHRISTMAS PARTIES

BOOKING ESSENTIAL!

ALSO ASK ABOUT OUR WIDE RANGE OF ACTIVITIES INCLUDING:

ADULT SWIMMING LESSONS, AQUAFIT

*CHILDREN'S SWIMMING LESSONS, MOTHER & TODDLER SESSIONS, CHILDREN'S PARTIES
SAUNA, SOLARIUM*

*AND NOT FORGETTING OUR 'NATURE'S WAY' BEAUTY CLINIC WITH A FULL RANGE OF
TREATMENTS INCLUDING MESSAGES, WAXING, AROMATHERAPY, FACIALS, MANICURES ETC.*

TELEPHONE NOW ON: **01404 822196**

OR CALL IN AND HAVE A LOOK ROUND!

Points to ponder

- Why is it that people say they "slept like a baby" when babies wake up every two hours?
- If a deaf person has to go to court, is it still called a hearing?
- Why do we press harder on a remote control when we know the batteries are flat?
- Why does someone believe you when you say there are four billion stars, but check when you say the paint is wet?
- Why do they use sterilized needles for death by lethal injection?
- Why doesn't Tarzan have a beard?
- Why does Superman stop bullets with his chest, but ducks when you throw a revolver at him?
- What is the speed of darkness?
- If the temperature is zero outside today and it's going to be twice as cold tomorrow, how cold will it be?
- If it's true that we are here to help others, what are the others doing here?
- Do married people live longer than single ones or does it only seem longer?
- Do you cry under water?
- How is it that we put man on the moon before we figured out it would be a good idea to put wheels on luggage?
- Why do people pay to go up tall buildings and then put money in binoculars to look at things on the ground?
- Why is there a light in the fridge and not in the freezer?
- Why do people point to their wrist when asking for the time, but don't point to their bum when they ask where the bathroom is?
- Why does your Obstetrician or Gynaecologist leave the room when you get undressed?
- If quizzes are quizzical, what are tests?
- If corn oil is made from corn, and vegetable oil is made from vegetables, then what is baby oil made from?
- If electricity comes from electrons, does morality come from morons?
- Why do the Alphabet song and Twinkle, Twinkle Little Star have the same tune? Stop singing and read on
- Do illiterate people get the flu?
- Did you ever notice that when you blow in a dog's face, he gets mad at you, but when you take him on a car ride, he sticks his head out the window?
- Does pushing the elevator button more than once make it arrive faster?

"FLORAL ENCHANTMENTS"

Designer:

Morven Fletcher

Flowers for all occasions

Floral designs to your
specification

Specialist in Wedding Floristry

Bodley Bridge Cottage
London Road,

01404 822049



**JULIAN
WILSON**

Electrical Contractor

1 Higher Woodhayes
Farm
Whimble

Tel: 01404 822641

**Your Friendly local
Bed and Breakfast**



**David Brown
Holway Barton
Whimble
Exeter**

Telephone: (01404 822477)

Visiting Practice

Day and evening
Appointments by arrangement

QUALIFIED

CHIROPODIST



**3, Railway Cottages
Whimble
Exeter**

01404 822372

CARE CONCERNS

Local care for
Local people

Respite care, bathing, cooking,
transport, infant/toddler care.

Minimum of 1hr

Very high standard of care given
Fully qualified
CRB Checked

Enabling people to remain in their
own homes

For further details phone:
01404 822096

RED HOMES ESTATE AGENTS



0.75% No Vat
Sole Agency Fee
Why Pay More?
16 National Offices and
Growing Covering South Eng-

- Advertised in Express & Echo
- www.rightmove.co.uk
- www.redhomes.co.uk
- Accompanied Viewings
- Regular Feedback

Call The Aylesbeare Office Now
for a Free Valuation on:
01395 225552

Complete Locksmithing Service

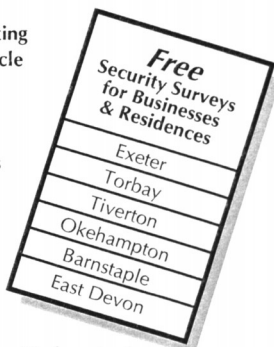


MASTER LOCKSMITHS



- Free Security Assessments
- Locks Supplied & Fitted
- Safes Opened
- Burglar Alarm Installations
- CCTV Systems

- 24 Hour Emergency Service
- Standard & Computerised Key Cutting
- Duplicate Keys Cut For Any Vehicle
- Car Transponder Keys Cut
- 24 Hour Lock Out Service
- Replacement Lock Installations
- Aluminium & Upvc Door Locks
- Master Key Suites



Agents For Medeco Locks



01392 411887
FAX 01392 424817

A Wide Range of Security Products
Available For Demonstrations At...

- 131 Sidwell St. Exeter EX4 6RY
- Unit 1, The Space Place, Alphinbrook Rd. Marsh Barton, Exeter.

www.guardian-security.sagenet.co.uk





DEVON HOME IMPROVEMENTS LIMITED

"Why Move - Home Improve"

Your local home improvements specialists for all those building and maintenance needs

Devon Home Improvements can provide you with hands on design and planning, together with a comprehensive supply of tradesmen and materials

We pride ourselves on our expertise and we believe we offer the most friendly and efficient service at very competitive rates.

- **Kitchen & bathroom design / installation**
- **Exterior & interior decoration
incl. plastering services**
- **Landscaping, patio, decking, garden walls,
garden structures**
- **P.V.C.u Facia & guttering incl. cladding**
- **Garage door installations**

Call today for your no obligation quotation

01884 277794

Or visit our website at

www.devonhi.com

Whimble Parish Council	
<i>Chairman:</i> Sara Randall Johnson	822524
<i>Clerk:</i> Mrs Gerri Turner, Penraddon, Hand and Pen	823385
St. Mary's Church	
<i>Contact:</i> Rev. Rob Wilkinson	822521
SClub11, Impact & Contact	
Phil and Rebecca Dominy	822163
East Devon Councillor	
Andrew Dinnis	850363
Whimble County Primary School	
<i>Headteacher:</i> Mrs. D. Brice	822584
<i>Chair of Governors:</i> Mrs Pam Scanlan	822262
<i>P.T.F.A. Chair:</i> Mr R.Camp	823392
Whimble History Society	
<i>Chairman:</i> Richard Webber	822038
<i>Secretary:</i> Roger Smith	822244
Whimble Mothers Union	
Margaret Burrough Gateshayes Farm	822257
Whimble Pre-School & Toddler Group	
<i>Chair:</i> Sally Young 11 Chard Ave	823228
<i>Playleader:</i> Jo Westney Glencroft, Church Road	822168
<i>Toddlers:</i> Karen Bell 5 Lower Woodhayes Court	823443
Whimble Womens Institute	
Mrs. Ann Bowden, Bradcott House, The Green	823450
Whimble Over Sixties Club	
Beryl Iball, 11 Rectory Close	822905
Whimble Recreation Trust	
<i>Knowle Cross Sports Ground.</i> Mr P. Garraff, Luppit	891206
Whimble Village Produce Association.	
<i>Chairman:</i> Adrian Williams, 47 Slewton Crescent	822430
Whimble Football Club	
<i>Chairman:</i> Ben Silk	822389
Whimble Tennis Club	
<i>Secretary:</i> Judith Imbo	823240
<i>Treasurer:</i> Adrian Rushworth	823276
Whimble Cricket Club	
Roger Smith	822244
Whimble Victory Hall Management Committee	
<i>Secretary:</i> Pam Scanlan, Albecq, The Green	822262
<i>Booking Sec:</i> Alison Tierney	822724
Whimble Post Office	
Alison and Jim Creasy	822359
Whimbletons	
Emma Palmer	823083
Neighbourhood Watch	
John Munslow, 44 Slewton Crescent	823456
St. Mary's Bellringers	
<i>Captain:</i> Liz Silk	822389
Whimble Scout Group	
<i>Group Scout Leader (and Marquee Booking):</i> Alex Spry	822844
Whimble Book Group	
Katy Howard, 9 Whiteways Close	823038

The Whimple News Team

Editor

Ed Hitchcock 823194

Production

Bob Scanlan 822262

Vivienne Leonard 822415

Sally Wilde 823246

Delivery

Ed & Nicky Hitchcock 823194

Advertising

Julie Millward 823985

Community diary

Nicky Hitchcock 823194

Treasurer

Miles Leonard 822415

LIVING AND SELLING LOCALLY

HALLS ARE PLEASED TO OFFER THE FOLLOWING SERVICES

- FAMILY OWNED BUSINESS
- STRONG LOCAL KNOWLEDGE
- SUPERB COLOUR DETAILS
- HIGH IMPACT ADVERTISING
- FREE VALUATIONS
- ACCOMPANIED VIEWING
- FLOOR PLAN SERVICE
- RESIDENTIAL LETTINGS

TEL: 01404 812000

View all properties on the UK's No.1 website: www.rightmove.co.uk



15 Broad St, Ottery St Mary, EX11 1BY
Tel: 01404 812000 Fax: 01404 815777
Email: halls@eclipse.co.uk Web: hallsestateagents.com

The New Fountain Inn

Whimble, Devon



A Traditional Olde Freehouse Village Inn

*As recommended by CAMRA ,
The Good Beer Guide, The Real Ale Guide
and the Quiet Pint Guide*

*Real Ales
Home Cooking*

Lunchtime & Evening Meals 7 days a Week

*Sunday Roasts etc - Vegetarian Choices
Handmade Desserts, Children's Menu
& Toddler Portions*

*Join us for a Friendly Drink, Bar Snack or
an A La Carte Meal*

Bookings are Advisable

Tel: 01404 822350