



New Fountain Inn

*Whimble, Devon.
Tel: 01404 822350*

As recommended by
Camra, the Good Pub Guide and the Good Beer Guide.

Real Ales

Home Cooking

Lunchtime & Evening Meals
7 Days a Week

Sunday Roasts etc - Vegetarian Choices

Handmade Desserts

Children's Menu & Toddler Portions

Special Menus available for Large Parties

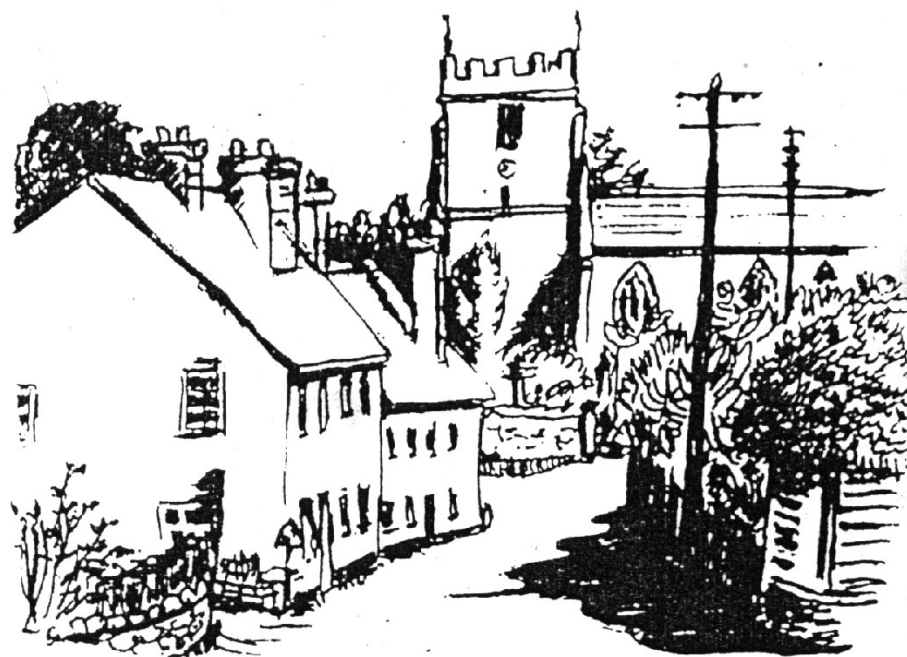
Lounge, Bar & Beer Garden

Join us for a Friendly Drink,
Bar Snack or A La Carte Meal

Bookings are advisable
Especially at Week-ends

A Traditional Olde Freehouse Village Inn

Whimble News



June/July 2001

What's on in Whimble

June

9	Church Fete	Dince Hill House	2.30pm
12	WI Members Night	Village Hall	7.30pm
16	Good Neighbour Day - Start of Neighbourhood Watch Week		
17	VPA Outing (see article for details)	The Square	9.30am
23	Ringers Outing	The Square	9.30am
24	Quiz night for Whimble News	Thirsty Farmer	8.30pm

July

10	WI talk 'WRAF Aircrew Duties'. Miss A Paddy recalls her working life.	Village Hall	7.30pm
8 -14	Whimble Village Week		
13-15	Village Week Flower Festival - 'Alphabetically Floral'		
14	Village Day		
27	New Vicar's licensing	St Mary's Church	7.30pm

August

11	Village Produce Assoc: Annual Flower Show		
----	---	--	--

**Please use the Whimble Diary held in the Post Office for checking availability of venues and booking events.
If your Association has an event which you would like listed**

St Mary's Church

Monthly Programme of Services

1st	Sunday	8am	Holy Communion
		11am	Family Service
2nd	Sunday	11am	Parish Communion
3rd	Sunday	8am	Holy Communion
		10.30am	Service with a Smile
4th	Sunday	11am	Parish Communion
5th	Sunday	11am	Joint Benefice Communion

The Whimble News Team

Editor

Peter Smith 822828

Production

Bob Scanlan 822262

Vivienne Leonard 822415

Delivery

Nicky Hitchcock 823194

Ed Hitchcock 823194

Advertising

Miles Leonard 822415

Jill Wilson 823339

Community diary

Vicky Stewart 823374

Treasurer

Miles Leonard 822415



Organisations in Whimble

Whimble Parish Council	
<i>Chairman:</i> Sara Randall Johnson	822524
<i>Clerk:</i> Mrs. Amanda Newman, Council Office - Torno	823385
Royal British Legion , Branch and Womens Section.	
<i>Chairman:</i> Mrs. F. Pratt, Sandfords	822451
St. Mary's Church	
<i>Contact:</i> David Rastall, Killigarth, Church Road	822486
<i>Contact:</i> Raymond Burrough, Gateshayes Farm	822257
Devon County Councillor	
Mr. R. Giles, 14 Winters Lane, OSM. EX11 1AR	813387
Whimble County Primary School	
<i>Headteacher:</i> Mrs. D. Brice	822584
Whimble History Society	
Mr. Bob Roberts	822311
Whimble Mothers Union	
Mrs. D. Rastall, Killigarth, Church Road	822486
Whimble Pre-School & Toddler Group	
<i>Chair:</i> Mrs. Sarah Griffin, Hillcroft, Church Rd.	823265
<i>New admissions/Playleader:</i> Sue Solf 1, Hillside, Talaton	822981
Whimble Womens Institute	
<i>Secretary:</i> Mrs. Rosemarie Burrows, Higher Slewton	822422
Whimble Over Sixties Club	
Mrs. Lin Carder, 18 Dince Hill Close	822538
Whimble Recreation Trust	
<i>Knowle Cross Sports Ground.</i> Mr P. Garraff, Luppit	891206
Whimble Village Produce Association.	
<i>Chairman:</i> Mr. A. Bratt, Rockwell, Talaton	822437
Whimble and Broadclyst Young Farmers' Club	
Mr. R. J. Burrough, Gateshayes Farm	822257
Whimble Youth Club	
<i>Chairman:</i> Pam Scanlan, Albecq, The Green	822262
<i>Leader:</i> Alison Lawry, Willowbrook, Whimble	822292
Whimble Football Club	
<i>Chairman:</i> B. Weeks, Briar Cottage, Church Road	822674
Whimble Tennis Club	
<i>Secretary:</i> T. A. Lang	822512
<i>Treasurer:</i> J. Hughes	822659
Whimble Cricket Club	
Mr. R.J.Smith	822244
Whimble Victory Hall Management Committe	
<i>Secretary:</i> Pam Scanlan, Albecq, The Green	822262
<i>Booking Sec:</i> Penny Wienreb, 3 The Square, Whimble	823064
Whimble Post Office	
Gordon & Heather Owen	822359
Whimble News	
Peter Smith, Lawn End, Church Road	822828
Neighbourhood Watch	
John Munslow, 44, Slewton Crescent	823456
St. Mary's Bellringers	
<i>Captain:</i> Judith Canniford, 22 Grove Road	822873
Whimble Scout Group	
<i>Group Scout Leader :</i> Alex Spry	851290
<i>Scout Leader:</i> Adam Bird	813923
<i>Cub Scout Leader :</i> Alex Spry	851290
<i>Beaver Scout Leader</i> Valerie Bond	822473
<i>Marquee Booking Sec :</i> Mrs. Mary McConnell	822729

Editorial

I'm writing this on what seems to be the sunniest day in Whimble so far this year. It's good to be able to welcome summer and we look forward to the various outdoor activities including Village Week in July.

Besides our "regulars" in this issue, I'm pleased to be able to include an introduction to Rev Rob Wilkinson, the new vicar, who moves into the Village at the end of July. Welcome to Rob and family together with some other new Whimble residents. We are also thankful for the memory of a number of Village people who have died over recent months.

We're at the time of year when we look at Whimble News finances. We're very grateful to the Parish Council for a gift of £100 with a promise to consider us again next year. After taking account of all the money from advertisers, and plans for fund raising, we still need another £200 to keep going for another year. It's not practical to charge for each issue but we would be grateful to receive donations (boxes are around the village or to any team member) by the end of June if possible. You'd also be welcome at our Quiz Evening at the Thirsty Farmer on the evening of June 24.

It's surprising what goes on in Whimble. Please let us have your news and views for the August/September edition to the Post Office or e-mail to bob.scanlan@eclipse.co.uk by 16 July.

With good wishes

Peter

Welcome to Our New Vicar

Rob Wilkinson writes:

Thank you very much for this opportunity to briefly introduce myself. My family and I are greatly looking forward to moving into The Rectory and being part of the Whimple, Talaton and Clyst St. Lawrence communities.

I was born in Dublin (so have an Irish sense of humour!), but moved to London in 1975 and have lived in different parts of England since then. For many years I worked as a fire and security surveyor for what was then known as the Sun Alliance Insurance Group, and as a family we spent a number of very happy years in Exeter prior to my ordination.

I trained for the ordained ministry in the Church of England at Wycliffe Hall, Oxford, and following on from that have served as a curate in Boughton Monchelsea, Kent, and St. Andrew's, Plymouth.

My hobbies include football (I'm a Spurs fan), body-boarding and, time permitting, I hope to be able to take up my interest in gardening again.

Wendy and I have been married for twenty-three years and we have two teenage daughters, Hannah and Rachel.

My licensing service is due to take place in St. Mary's Church, on Friday 27th July at 7.30pm. Finally, in case you are wondering what to call me - Rector, Vicar, Priest-in-Charge, or whatever - I am very happy simply to be called Rob.

We look forward to meeting you in the summer.

Many have said how much they appreciated the thought in changing plans to light fireworks on New Years night in the Square. This was in response to a number of concerns including the close proximity of thatched properties.

Look out for
**Village Day
Raffle tickets**
which are now on sale!

Briar Cottage
Church Road

I would like to thank everyone who attended my wife's funeral and sent flowers. It was much appreciated by me and Teresa. I tried to speak to you all at the time but I know I must have missed some people. I would like to thank you all for your support and I will see you all in the future.

Brian Weeks

Rene Pinn would like to express sincere thanks to all who gave donations to Coleridge Medical Centre and Ottery League of Friends, which amounted to £478 in memory of Leonard

Answer to Brain Teaser

The other animal is a mule, a cross between a horse and a donkey,

ADS

ADS

ADS

ADS

WHIMPLE AND DISTRICT VILLAGE PRODUCE ASSOCIATION

We were very pleased to see so many people turn up for our coffee evening at the beginning of May, particularly all those new to the village. Despite the difficult growing conditions a good variety of plants were on offer. Many thanks to all those who donated plants and to all of you who came along to make purchases.

Due to the technical difficulties of getting to grips with the computer programme that John Shepherd set up for the Flower Show, it has been decided to run this year's show with slightly less classes than usual to make it easier for us to organise. I would point out that this is a temporary arrangement for this year only while we get ourselves sorted and we hope that next year we will be able to offer a full set of classes. By the time this goes out we should have our Show Schedule available. For those of you who do not have one delivered, copies will be available at the Post Office and the Whimple Stores courtesy of Gordon and Graham respectively. If you have any queries on any of the classes, please do not hesitate to contact either Andy or myself, telephone numbers on the schedules. The Show is on Saturday 11th August and with classes more or less for everyone to enter we hope you will all have a go at something. Sadly we will be without three of our regular exhibitors and helpers this year. The support of Paulette Weeks, Jim Stevens and Les Carter has been greatly appreciated over the years and their contributions will be greatly missed.

By the time this goes to print we will hopefully have had our coach trip to Kingston Maurward Gardens and Animal Park at Dorchester. If our luck holds out and the weather is as kind as in previous years, then it should be another successful trip.

Paul Wilson,

Village Week Flower Festival

In the last issue of Whimple News Paulette Weeks announced that the theme of this year's Flower Festival from Friday 13 July until Sunday 15 July would be 'Alphabetically Floral'

The flower festival will go ahead as planned and will be organised by her daughter Teresa.

You can contact Teresa (Smith) on 01884 277138

Wanted - Special people



PC Jim Tyrrell, our new local policeman, is encouraging people in Whimple to volunteer to become Special Constables working in the Whimple area. This is a valuable contribution to our community.

Please contact Jim on 08705 777444 if you would like more information. He would be pleased to chat things over with you. Jim is also available to talk with any resident about any matters of concern.

The best way to contact him is to leave a message on 08705 777444 - he will get back to you as soon as possible.

NEWS FROM PO CORNER

Now we have the computers my life is near complete and there seems so little to grizzle about... if you discount election promises, dog mess, speeding and horn blowing cars, litter, cost of living, etc. etc. - perhaps paradise not yet regained...!

I hear that fireworks in the Square, that so beautifully brought in the year 2000, are no longer to be exploded to bring in the next New Year - much as I enjoyed the first lot I am much relieved by this news. We thatch owners in the Square were very worried at these pyrotechnic displays so near to our flammable roofs - this worry may be irrational but after the fires in 2 & 3 Webbers Cottages and Rose Cottage we are a sensitive bunch. To whoever made the decision to look elsewhere for a site I offer my thanks.

Back to the computer. . . did you know that if you press keys F1, F1, F13, F7, F8, F6, in that order, you come to Foreign Currency sales (I told you it was fun!) - well dont forget we can get all your foreign currency and travellers cheques for you. The cheapest way is for you to come in with CASH and your order and allow 4 days for the foreign stuff to arrive at a very competitive exchange rate- you will then be charged only 1% (min £2.50) commission.

Also- did you know?- F1, F1, F13, (F3 to Alliance & Leicester) F8 to icons for Coop, Lloyds, Barclays, Smile and Cahoot banks - (impressive or what?!) - do your personal banking at the P.O. - we do need your business..!

Just a thought to carry along with you - when most people buy a house they look at it and decide what they can do to alter it, redecorate it, furnish it, to make it their very own and the way they want it, well I now have the thought that there are people who try to do this with villages when they move in - amazing.

Best wishes to all - by the time this comes out the election will be over - and we will have the government we deserve

[www GO&HO@PO.com](mailto:www.GO&HO@PO.com)

FREE INTERNET COURSE AT EXETER LIBRARY

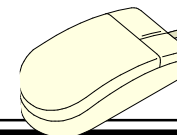
If you don't know your home page from your search engine, staff at Exeter Central Library have just the course for you. Exeter Central has become the first library in Devon to offer the BBC's 'Becoming WebWise' course which seeks to demystify the Internet and helps first-time and inexperienced users go online with confidence.

Research has shown that many people still find the Internet daunting with over 40% of users classing themselves as beginners.

The letters www. are everywhere - job advertisements, shop fronts and newspapers, and for some, e-mails have become a natural way of communicating. Theres a sense that technologys part of everyones lives and that everyone knows how to e-mail or surf. But of course thats not true. Becoming WebWise helps develop Internet skills in an online, interactive training course. It covers everything from search engines and e-mail to viruses and other digital technology, such as WAP phones. It gives a thorough grounding in the way the Internet works in a simple and easy-to-follow format. It takes 10 hours in total and is totally flexible and convenient.

Access to the Internet for this is free. In addition, Exeter Central Library has linked up with Exeter College where you can take the final test. The fee for this is £15. Exeter College also offers free sessions to get you started using your computer and the Internet.

For people who think they might be more comfortable learning in a group, Devon County Councils Community Education tutors in Exeter are also offering a Becoming Webwise course in the IT Learning Suite at Exeter Central Library. For further details, contact 01392



ADS

ADS

ADS

ADS

BENEFITS CAMPAIGN TO TACKLE RURAL POVERTY IN EAST DEVON

A campaign to help people on low incomes in East Devon to claim their entitlement to government benefits was launched on 26 March.

The scheme is particularly timely in addressing the plight of rural communities hit by the current Foot and Mouth disease outbreak. This includes farming families and those working in the tourism and leisure industries.

It is estimated a staggering £50 million a year in Government benefits goes unclaimed in Devon. Yet average earnings in Devon are 20 per cent below the UK average. The county is the second lowest in the country's earnings table and half the population of Devon earn below the European low pay rate. The Benefits campaigns led by a partnership of local agencies including Devon County Council and East Devon District Council aim to tackle the issue of rural deprivation by helping people on low incomes claim their rightful entitlement to Government benefits.

The new campaign will particularly target the elderly, children and families, people with disabilities and those involved in farming and tourism. It aims to raise awareness of people's entitlements to benefits and improve access to information and advice through a range of statutory and voluntary agencies. The East Devon campaign is being organised by the Devon Welfare Rights Unit and the Exmouth Citizens Advice Bureau. Further information can be obtained from the special Helpline number 01404 815861.

Citizens Advice Bureau

citizens
advice
bureau

Whimple Victory Hall

Registered Charity: No. 291496

In this, my first report for the Whimple News, it is sad to open with the news of the sudden death of Paulette Weeks. Paulette had been a member of the Victory Hall Committee for over twenty years and held a number of positions on the committee, most recently as Booking Secretary. There was no-one who knew more about how the Hall functioned and whenever information was needed it was to Paulette that one referred to first. She will be sorely missed by many organisations in the Village but none more so than the Victory Hall. Our thoughts are with Brian and Teresa at this time.

However, we have to move forward. It would be a very poor epitaph to the memory of Paulette if the Hall for which she had worked so hard and for so long, were not to continue to function as she would have wished. At a recent Extraordinary Meeting a more permanent memorial to Paulette was discussed and this is being actively pursued.

At the Annual Meeting a new committee was formed and we are looking forward to an exciting and proactive period of progress. Much has been done to improve the way in which the Hall is run and we are looking to keep the Villagers informed as to how we anticipate future developments.

We have been fortunate in having Penny Weinreb volunteer to take on the role of Booking Secretary and it has been agreed to co-opt her onto the Committee from the beginning of June.

We have a number of ideas for the future and hope that we will be able to count on your continued support for your village Hall. If you have any suggestions or comments then please speak to a member of the committee so that what we offer is what you want.

John Discombe

Since writing this article we have learned of the sad death of Les Carter who did a lot for the Victory Hall over many years. We extend our deepest sympathy to his family.

Whimble Church GARDEN FETE



Saturday 9 June
2.30pm
DINCE HILL HOUSE
Grove Road

Cream teas - stalls - competitions
DANCING DISPLAY BY WHIMBLE SCHOOL
Free admission (In Victory Hall if wet)

Hospiscare Wine & Cheese Evening

On 25th May about 80 people made their way to the Victory Hall and generously supported the Wine and Cheese Evening in aid of Hospiscare. With most expenses paid (only one account to come) I think it is safe to say we shall have a net profit of £610 toward the work of Hospiscare in the Otter Vale area.

It is a wonderful result and a special thank you is due to all concerned - - those who contributed to the stalls and gave their time and effort in preparing and decorating the hall, to behind the scenes and front of house helpers and to everyone who bought a ticket, gave generously and helped to make the evening such an enjoyable and successful occasion.

Whimble Parish Council

An update on the development of the old playground - There have been delays in the progress of the BMX track due to foot and mouth restrictions, but with help from many local children we hope to complete the track in the summer.

We are hoping to raise funds to have a small play area to the left of the footpath.



Whimble Church

Many thanks to all who came to the coffee morning and plant sale at Furze Hill on the 12th May when £300 was raised for Whimble Church and the charity Christian Aid. There were bedding plants and perennials on sale as well as other produce and it was great to be able to sit in the sun and enjoy coffee and cake. Thanks to all who donated plants and cakes and helped in any way to produce this great result.

Sarah Smith

TRAFFIC DELAYS ON TOPSHAM ROAD

Road managers from Devon County Council are warning motorists using Topsham Road in Exeter to expect some delays in their journeys for 28 weeks due to essential gas pipe-laying and other work which began on Easter Sunday. The County Council is working closely with Transco, Exeter City Council and contractors to minimise disruption and to maintain the maximum flow of traffic during the works. Motorists are being advised to:

Seek an alternative route into and out of the city wherever possible. Consider staggering their journeys to avoid peak times. Make more use of alternative forms of transport including walking, cycling and public transport. Make greater use of Exeter's excellent Park and Ride facilities at Matford, Sowton and Honiton Road.

ADS

ADS

ADS

ADS

Come along to the
Quiz Night
 at the Thirsty Farmer
 at 8.30pm on Sunday 24th June
 raising much needed funds
 for
Whimble News



WHIMBLE PRIMARY SCHOOL

A vacancy exists for a School Governor.
 If you are interested and would like to know more
 please telephone the Head Teacher
 Di Brice - 01404 822584



You can pay
 cheques in,
 take cash out,
 in, out, in, out...

Enjoy easy, everyday banking
 at the Post Office

Now we can connect you with your bank,
 getting money in and out of your account is
 even easier.

If you have an account with any of the banks
 shown below, you can make Cash Deposits,
 Cheque Deposits and Cash Withdrawals at
 most Post Office branches.



To open a current account or for more
 information about banking with
 Alliance & Leicester, please call 0800 068 6967
 (lines open 24 hours, 7 days a week) or visit:
www.alliance-leicester.co.uk



For more information about banking with
 Barclays, please call 0800 400 100 or visit:
www.barclays.co.uk. For Barclays Cheque
 deposit envelopes, please call 0800 169 3091



For more information about interactive
 banking with cahoot, please visit:
www.cahoot.com



For more information about our products
 and services, or our ethical and ecological
 policies, please phone 08457 212 212 or
 visit: www.co-operativebank.co.uk



If you would like to find out more about
 banking with Lloyds TSB through your Post
 Office, phone your local branch, or visit
www.lloydstsb.com. For supplies of the
 cheque deposit envelopes you can phone
 0800 056 2951



For more information about Internet banking
 with smile, please visit: www.smile.co.uk

An Old Whimble Tale

Way back in the nineteen twenties the local lord of the Manor had a large country estate near Whimble with gardeners, gamekeeper and resident staff. A senior officer in the Army, he had three children, two girls and a boy. Their main residence was in London.

The children spent part of each summer in Devon with their Nanny. The folk of Whimble sometimes saw them and remembered a goat cart which the Nanny led, pulled by a goat.

One surviving member of the family now living in another county has vivid memories of that time. She said "It wasn't a goat cart, it was made by a village craftsman, a miniature carriage with a platform on the back where the footmen stood on a real carriage. It was a very uncomfortable seat, but our brother used it whilst I, the elder sister, sat inside.

One summer an unfortunate incident happened. We had been told that the heir to the Throne was visiting a house about three miles away and Nanny took us in the carriage pulled by the goat. We waited by the gatehouse to witness the departure of the Prince of Wales. As the Rolls Royce swept down the driveway the goat, very frightened, reacted by leaping into the hedge. I was quite unable to stop myself and found myself lying in the roadway with my legs up in the air as the Royal car passed by. Nanny was not pleased with me as I had not given the expected curtsy."

Cliff Benton

This article was Cliff Benton's original 'Old Whimble Tale'. It won its category in the last Whimble show and led to the series of articles in recent issues of Whimble News.

Brain Teaser



A year ago Farmer Brown put his five horses and five donkeys in the same field to save space. No other animals had access to the field and so the horses and donkeys were able to graze together undisturbed. Two days ago Farmer Brown took all the horses to fresher pastures. There are now six animals left in the field. Only five of them are donkeys. How can this be?



*** # 0 6 #**

MOBILE PHONE TIP

Mobile phone theft is on the increase, but the following tip might prove useful if you are unfortunate enough to have your phone stolen.

First, check your mobile phone's serial number by keying in the following digits on your mobile phone: *** # 0 6 #**. Then a 15-digit code will appear on the screen. This number is unique to your handset, so make a note of it in a safe place.

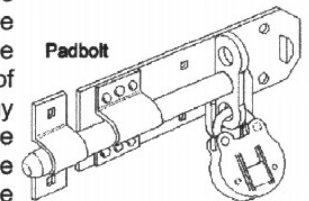
Should your phone get stolen, you can give your service provider this code. They will then block your handset, so even if the thief changes the SIM card your phone will be totally useless. You probably will not get your phone back but at least the thief cannot use or sell it.

BBQ TIME IS HERE AGAIN

Thieves love the summer, open windows, doors unlocked, noise and families and guests enjoying the cooking and relaxing in their gardens. Just the time for the sneak thief to spoil the party for you, so be prepared don't give an open invitation. As we all know, 2001 has seen a number of incidents in the village where the audacious thief has taken property.

PADBOLTS ON GATES

Many of us have gates with padbolts to protect the side or back of our premises. These bolts I have noticed are very often positioned at the top of the gate and can be opened by putting your arm over the top of the gate if a padlock is not used. Sadly many criminals are tall and have long arms, and are aware that we position our door bolts at the most vulnerable positions at the top of the gate. The top is also the weakest place to position a padbolt. The safest and best place is half way up if that is possible.



ENJOY A SAFE SUMMER.

John Munslow 01404 823456 'Conway House 44 Slewtown Crescent Whimble
Secretary 4 Area Neighbourhood Watch Forum **Mailto:** jcm@globalnet.co.uk

ADS

ADS

ADS

ADS

Whimble News

UPDATE FOR ALL ADVERTISERS

Well here we are, at the end of another year for the News and therefore subscriptions for adverts are due again.

In order to make the renewal process as straightforward as possible, could all advertisers please contact either Miles Leonard or Jill Wilson with details of their requirements for the coming year; with any changes they need to be made to their adverts e.g wording or design/layout.

Rates are to be kept at the same level as last year i.e:

Full page @ £60
Half page @ £40
Quarter page @ £25

This will cover editions from August 2001 to June 2002 inclusive

Miles & Vivienne Leonard - Tel 822415

Jill Wilson Tel 823339

Thank you for your continued support and we look forward to hearing from you soon.

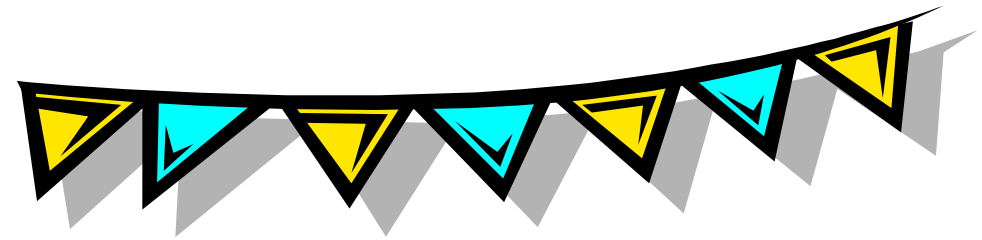
Bellringers Outing

Saturday 23 June 2001

This year we are visiting Churches on and around the Somerset Levels, stopping for tea at Glastonbury. As usual we hope that a good number of friends will join us on the coach for a very pleasant and unusual day out.

We will leave The Square at 9.30am, returning about 7.30pm.

To reserve a seat please contact Judith Canniford (tel. 822873) or any ringer.



WHIMBLE VILLAGE WEEK 2001



**SUNDAY 8TH JULY
TO
SATURDAY 14TH JULY**

EVENTS TO INCLUDE



IT'S A KNOCKOUT



BEEBLE DRIVE



WALKING TREASURE HUNT



QUIZ NIGHT



SUMMER FAYRE



FANCY DRESS FUN RUN GRAND BALLOON RACE



BRAINTEASER QUIZ GAMES TOMBOLA BRIC A



FACE PAINTING CAKES ICE-CREAMS IS BBQ



AND MUCH MORE!!!



From my window in the square

For, lo, the winter is past, the rain is over and gone.
The flowers appear on the earth;
the time of the singing of the bird is come,
and the voice of the turtle is heard in our land.
Song of Solomon

Let me tell you a story about.....for me these words have a ring of magic about them. In one way or another, they go back to the beginning of time and civilization. And the Lord planted a garden eastward in Eden and out of the ground he made to grow every tree that was pleasant to the sight and good for food; the tree of life also in the midst of the garden, and the tree of knowledge of good and evil.

After having attended the funeral service for Paulette Weeks conducted with such deep meaning by the Reverend Andrew Williams who was our priest a few years ago, I was inspired to write my Whimble News article and tell you the story about the floral symbolism and the creation of sacred gardens. I thought it would be a tribute to Paulette who so loved flowers and grew them in her allotment.

In the Bible, the appearance of flowers brought a reference to lilies in Christian life. Consider the lilies in the field; the rosebuds of love. In religious pictures, in the Annunciation for example, the Archangel Gabriel is invariably depicted presenting the Virgin Mary with flowers as a sign of love and peace. Historically the lilies petals have always been swollen with significance. In classical literature they represented the transiency of life and loveliness.

The Easter gardens are one of the longest surviving sacred gardens in the West, in our Cathedrals and Churches they are made as a public sign of our faith. We know from John's gospel that the tomb of Jesus stood in a garden. Traditionally, primroses were used to decorate those gardens, as these lovely flowers have a long association with Easter. However, nowadays, it has become more usual to use Easter lilies, which symbolize the thoughts we have for those we love and see no longer.

A basic theme in Christian gardening is a celebration of the wonders of creation and nature. For many of us, the creation of a garden is of greater significance than the gardening itself.

A garden can become a sanctuary, a place of escape, a dream of the lost Garden of Eden, our Paradise on Earth. It is perhaps for that reason that Tim Smitt was so inspired when he created the Eden Project in Cornwall. The response to this image of Paradise has been phenomenal and I don't think



there are many towns or villages in England where groups of people of any description have not included a visit to the Eden Project even before it was completed. Even the Foot and Mouth crisis did not stop people going there.

When Jesus wanted to describe Divine glory he told us to consider the lilies of the field. Gardening has become more and more popular and the quest for a spiritual sanctuary so broad. A garden, even a small one, even an allotment can stimulate and heal. The desire for gardens is part of a healthy reaction against the harsh realities of modern life. It is a fact that we love to green our lives. Remember when a few years ago the idea of the garden as a town in England was expressed through the garden cities of Welwyn Garden City and Hampstead Garden suburb. There are more and more programmes on television about gardening and I remember with great affection when Gardeners World was created with the late Percy Thrower. It seems significant to me too that the very beloved Geoff Hamilton called his book Paradise Gardens: Crafting and Planting a Secluded Garden how we miss his programme

I also remember with nostalgia that most wonderful book by Frances Hodgson Burnett, The Secret Garden. What a delightful story, which was then made into a most enchanting film. It clearly showed the healing effect of nature both physical and psychological. It certainly captured the true magic of a sacred garden. We must relearn the art of telling stories.

Through the years the garden brings us in touch with the changes of seasons, of the natural world of which we are so much part. In today's world which is assaulted on all sides by forces of greed and destruction we need to have a haven, a symbol of a brave new world of beauty and kindness. For Paulette her allotment was her own universe where she was blissfully happy. I hope she will find plenty of beautiful flowers where she is now.

Edith Grout