

# *Whimble News*

---



A Festive Thirsty Farmer!

---

## Christmas 2023

---

[www.whimplenews.uk](http://www.whimplenews.uk)



*The New*  
**FOUNTAIN INN**

Olde Worlde family run Free house in the heart of  
Whimple.

Christmas Opening Times.

Christmas Eve, limited menu for food 12pm – 6pm  
Drinks 11am – 11pm.

Christmas Day open for drinks 11am – 1:30pm.

Boxing Day 12pm – 8pm drinks only.

Wednesday 27th Closed.

Thursday 28th Closed.

Friday 29th Open as usual.

Saturday 30th Open as usual.

New Years Eve we are open 11am – 1:30am.

New Year's Day we are closed.

We wish you a very happy Christmas & a happy new year.

Tel 01404 643730

[www.newfountaininn.com](http://www.newfountaininn.com)

# Editorial

The Christmas lights are appearing, the decorations are going up and Christmas trees are being delivered, Christmas is just around the corner - so its time to welcome you to our Christmas edition of Whimble News.

As ever, there is lots going on at this time of year -There will be music aplenty, The Tale Valley Choir, with its members from Whimble, is giving concerts in Talaton and Feniton in early December (see page 17) and the Phoenix Choir is performing at Aylesbeare shortly afterwards (See page 41). All three concerts are free.

And of course, we should all be in good voice for Carols in the Square on Christmas Eve. Emma would love to hear from those of you who can play musical instruments to join the band (page 14). It costs nothing to take part but perhaps you can find some cash for the collection in aid of Devon Freewheelers.

If you haven't got your Christmas tree, then Cotley Farm is the place to go - with great trees, real reindeers and refreshments to add to the Christmas cheer.

When Christmas is over there is always the question of what to do with this year's tree. The Young Farmers have provided an answer with their Christmas Tree collection service which costs just £5 and raises funds for the RNLI and FCN charities. (See page 27 for how to book).

That takes us into January and Wassailing, so come and join us at the New Fountain at 6.30pm on Wednesday 17th (see page 43 for details of the route and a reminder of the words of the Wassail song).

You will also find some useful reading in this edition of the magazine with a report from Cllr Todd Olive on page 22 and an update from the POW&R group on page 50. It is also good to learn that the shop will soon be offering an improved parcel sending and receiving service thanks to Sharon, Rory, Sabrina and the team.

On page 10 Rev. Marc reminds us of the harsh reality of the first Christmas and the reason we should continue to celebrate it. The East Clyst Church Community has been doing some soul searching and has been taking stock of its role in our lives and community. It has produced a report that challenges our tendency to take our church for granted. The report is too long to put in this edition of the magazine but there is a link on page 12 that takes you to the Whimble News website where you can find the full report. It is well worth a read.

On the centre pages we have set out our best understanding off what open and when over the Christmas period, although not everyone has finalised their plans yet.

It is always interesting reading David and Phil's reports on the weather. As I sit here sheltering from the cold, the wet and the wind today, I read that we were experiencing record breaking hot weather just a few weeks ago. So I will wrap up warm and wish everyone a bright and happy Christmas with very best wishes for 2024 from the Whimble News Team. We welcome your articles for our next edition in February. Send them to me at bob@bobscanlan.co.uk by 12th January please.

**Bob Scanlan**



**Andy  
Brooker**  
Monumental Mason

**Whimble based**

**Traditional  
Memorials**

**Handcut Lettering**

**01297 33290  
07931 322291**

## SOUTH WEST PADDOCK CARE

JONTY CORBIN  
01404 812139  
07512678976



- Topping
- Harrowing
- Rolling
- Hedge-cutting
- Spraying - weed control
- Soil sampling
- Lime spreading
- Fencing, field shelters, stables
- Fully insured and qualified

[www.southwestpaddockcare.co.uk](http://www.southwestpaddockcare.co.uk)

**TRY OUR  
PAYMENT PLAN**

3, 6, 9 or 12 months  
THE EASY WAY  
TO PAY

# RIDGE ROOFING



**AT THE TOP**

Guaranteed  
to beat any  
genuine  
produced  
quote

**FOR BOTH  
QUALITY  
& PRICE**



## & SCAFFOLDING SERVICES LTD

**ALL ASPECTS OF ROOFING UNDERTAKEN - FROM LEAKY ROOFS TO RE-ROOFS**

Ridge Roofing Ltd is a well-established company with over 25 years' experience behind them, working in partnership with most of the leading estate agencies.

- Slating • Tiling • Flat roofing • Fibreglass flat roofs • Chimneys/Leadwork • Turnerized slate roofs • Guttering/uPVC/fascia boards
- Storm damage/insurance work • All grant work undertaken
- Insurance backed guarantees • Full public liability insurance
- Free written quotations • All work guaranteed



T: 01404 891813 M: 07789 555685 • [stephen.wattsr@gmail.com](mailto:stephen.wattsr@gmail.com) • [www.ridge-roofing.com](http://www.ridge-roofing.com)



# What's On In Whimble

## December

- 9th Christmas Special Soup'n'Sarnie at the Victory Hall 12noon—1.30pm
- 10th 4.00pm Christingle Service St Mary's Church.
- Christmas Day 11.00am Family Service. St Mary's Church.
- 12th WI Christmas Party in The Hub at 2.00pm
- 13th Tale Valley Choir at 7:30 at Feniton Church—Free admission
- 15th Tale Valley Choir at 7:30 Talaton church—Free admission
- 16th Front Row Club 7.00 for 7.30pm in th Victory Hall
- 17th December 4:30pm Carols by Candlelight St Mary's Church.
- 18th Phoenix choir at Aylesbury village hall
- 19th 6.30-8.00pm Candlelight Yoga in the Victory Hall
- 24th Christmas Eve Carols in the Square 7.30pm
- 24th December 11.00pm 'Midnight Mass' St Mary's Church.

## January

- 6th Young Farmers Christmas tree collection
- 9th WI meeting—Devon Freewheelers 2.00pm in the Hub
- 13th Front Row Club 7.00 for 7.30pm in the Victory Hall
- 27th Soup'n'Sarnie at the Victory Ha;; 12noon to 1.30pm

## February

- 10th Front Row Club 7.00 for 7.30pm in the Victory Hall
- 13th WI meeting, Bessie's story , Rosemary Griggs - 2.00pm in the Hub
- 24th Soup'n'Sarnie at the Victory Ha;; 12noon to 1.30pm

## March

- 12th WI meeting, Commonwealth War Graves - Tim Stoneman 2.00pm in the Hub
- 16th Front Row Club 7.00 for 7.30pm in the Victory Hall
- 30th Soup'n'Sarnie at the Victory Ha;; 12noon to 1.30pm

## April

- 9th WI meeting, Exeter Cinema, the Golden Age, Jon Bell - 2.00pm in the Hub
- 13th Front Row Club 7.00 for 7.30pm in the Victory Hall
- 27th Soup'n'Sarnie at the Victory Ha;; 12noon to 1.30pm



## Testing Voneus

We were forced to move broadband providers as the company who had delivered fast and reliable broadband to us for 18 months were ceasing to continue business services. So we thought that we would give Voneus a go as they had dug up most of the roads around Whimple to lay new fibre and had left a convenient termination point in The Square close to the shop.

Our needs are slightly more complex than a household with reliability being more important than speed and we have card payment machines, a till, a remotely monitored camera system, an alarm system and the usual clutch of computers and printers. We also have a inbound call screening system on the phone line to stop the endless spam calls trying to sell electricity, gas and card payments. All of these worked perfectly on our existing provider, so we assumed a transition to Voneus should work ok and signed up with them? Wrong decision!

After a very stressful two weeks (and many unanswered messages and emails) trying to get all our devices to work with the new equipment, we managed to settle down to an "as good as we can get" position with the Internet and Voice Service provided.

We have come to the conclusion that Voneus under-invested in post sale customer support staff levels and skill which makes us very nervous about any failures in the future. Come and buy me a coffee if you want the full story!

## Parcels:

On a happier note, we have successfully provided a parcel sending and receiving service for our customers since the end of September and have a regular Royal Mail collection of parcels and letters from the shop at 15:30 weekdays and 11:15 Saturdays. A few villagers use the "Local Collect" service to divert online orders to the shop for later collection which makes it more convenient than waiting in for the post.

If you wish to use the service, just go online to Royal Mail's website [send.royalmail.com](http://send.royalmail.com) and select the postage you would like for the size and weight of parcel, speed and security of the delivery (e.g. Tracked 24). Be very careful though to select the option that allows you to drop the parcel at a Post Office. Some of the options are only for Royal Mail Delivery Office which is in Sowton. Then print your label and bring the parcel to us. You may also be given a QR code which can be converted to a label in the shop. This service is also very good for online shopping returns if the online shop supports Royal Mail postage.

If you are not into the online postage purchasing thing, we also have a range of stamps in the shop that can go onto your parcel to make up the correct postage cost.

The Drop and Collect parcel system has rejected a small number of parcels to date which we have reported in detail to Payzone and have been assured by Payzone that these issues will be resolved in early December.

The recent announcement from Post Office Ltd. (who own Payzone), that they are no longer in an exclusive arrangement with Royal Mail and are now accepting Evri and

DPD prepaid parcels should mean that we will be able to add Evri and DPD parcel acceptance to our service sometime in 2024. Watch out for our announcement.

## **Christmas:**

In the lead up to Christmas, we have ordered in plenty of wrapping paper, sticky tape, Christmas cards, Christmas stamps, money envelopes and gift cards as well as the usual cake making ingredients and last minute essentials such as batteries and toilet rolls.

Our fresh food providers stock a range of Christmas foods such as speciality pates, cakes, minced pies, smoked salmon and brandy clotted cream. We can also source catering size cakes and frozen meats such as lamb and duck. If you would like us to order something for you for Christmas, pop into the shop and have a chat with Sharon, Rory or Sabrina.

We will also be taking orders for the supply of vegetables and our usual produce to help you stock up for Christmas.

We will be open as usual on Christmas Eve until 12:00 and then will open again at 7pm to support the Carol Singing in The Square with cups of warm Mulled Wine and Hot Chocolate at £2 each. £1 per cup goes to the Devon Freewheelers charity which is supported by the Carol Singing. Last year we added over £80 to the collection on the night!

We are closed for Christmas Day but open again on 26th for half day and then back to normal until New Years Day where we will be open to 12:00.

## **Staff:**

We are sad to be losing a member of staff, Sarnia, who is planning to move outside of the Whimble area later this year. Fortunately, we have managed to recruit a replacement who is being trained and will start with us in mid December. Please come in and say "Hi" to Sue when she starts full time. Sarnia has been a great member of our team and we will be sad to lose her.

Finally, we are very grateful to our regular customers who we see every day to buy their essential items as this keeps the business alive and ensures that Whimble continues to have a Village Shop. The increase in our electricity and staffing costs, squeezed margins from some of our wholesalers plus the reduction in customer spend due to the raised cost of living is jeopardising the future of independent retailers like us. We would like to ask for support from Whimble Villagers who don't regularly shop with us. If you could visit us at least once a week and purchase at least one item from us instead of the big supermarkets, this will increase our turnover by 15%. You will be pleasantly surprised at most of the prices where we are close to big supermarket prices and your help will underpin the future of your village shop.

Please be aware that we buy goods from local providers where possible; eggs from Streete Raleigh and Talaton, bread from Exeter, milk from Clyst Hydon, honey from Whimble, cider and apple juice from Whimble Orchards. The list goes on. These providers benefit from our customer sales which in turn, benefit the people of Whimble and surrounds.

With best wishes for Christmas and the New Year

**Sharon, Rory, Sabrina and the team**

**The Square  
Whimble  
EX5 2SN**



**01404  
822316**

**Rory, Sharon, Sabrina and Team welcome you to our Stores and Coffee Shop for fresh Devon bread, milk, vegetables and eggs. Frozen, fresh and canned foods. Cards, stamps, Gift Cards, stationery and more.**

**We also provide Parcel sending and collection, bill payments, cash withdrawals, electricity and phone top-ups, gift cards and cash withdrawals.**

### **Opening Times**

Mondays to Fridays	08:00 to 18:00
Saturdays and Sundays	09:00 to 12:00
Public Holidays	08:00 to 12:00

## **Maths & Physics Online Tutoring**

**GCSE & A-Level**

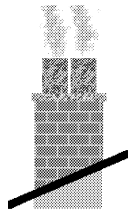
*Personal coaching to suit your needs,  
with experienced mathematician.  
Member of the Tutor's Association.*

Daytime/ Evening/ Saturdays.

For more information please see my website:  
[robertpooleymaths.co.uk](http://robertpooleymaths.co.uk)

**Robert Pooley 01404 822333  
[robertpooleymaths@gmail.com](mailto:robertpooleymaths@gmail.com)**

## **Chimneys Wood Burners Fires**



**Swept, Installed, Repaired,  
Lined and Built**

**"All your chimney needs"**

**Alf Butler**

**Tel: 01404 811843**

**A fully insured and HETAS  
registered Company**





## PLANNING & PROPERTY EXPERTS

01404 821999  
RANDALL@BUILDCONSULTANTS.CO.UK

Building Design & Planning Permission

Call or email us today for a free consultation -  
or why not pop in and see us at The Hive,  
opposite the Thirsty Farmer

YOUR VISION, OUR EXPERIENCE



Experts in nature

Whimble-based tree surgeon

**Dendrologic**  
Arboricultural solutions

Arboriculture  
Tree pruning + removal  
Hazardous trees  
Tree health  
Planting and establishment

Ecology  
Habitat management  
Advice  
Survey

Contact Dylan on: 07828 013 486  
dendrologictrees@protonmail.com

## BARRY SEAFORTH DECORATING SERVICES

Est 1979

PAINTING WALLPAPERING

SPECIALIST FINISHES MURALS TILING

COVING CARPENTRY ALTERATIONS

REFERENCES AVAILABLE

Call Barry on 01297 22434  
or 07712 120635

or email: [barryseaforth@gmail.com](mailto:barryseaforth@gmail.com)





## WHIMBLE CHURCH

<http://churches4all.org/>

Hello my friends,

So here we are again, Christmas is just around the corner and then we will be into 2024. I wonder if 2024 will be any better than 2023. To be honest, I found myself wondering that in 2021 after COVID; then Russia Invaded Ukraine and war raged again in the heart of Europe, the economic effect caused a global shockwave and a cost-of-living crisis in the UK. That war and all its horror continues. Only this year we have also seen renewed conflict in the Middle East as well, plus assorted new COVID variants appearing. Not to mention various strikes, scandals, and other tragedies in our own country.

Given what the last few years have been like, it can seem quite strange to be approaching a time which is supposed to be about joy and peace but then, I suppose it depends on one's view of the Christian faith and the story of Jesus.

What do I mean by that, well when we think of Christmas Day it is easy to fall into the trap of the warm and fuzzy nativity scene: a rosy cheeked baby, a happy and smiling Mary and Joseph, clean golden straw and well-groomed farm animals guided by chuckling shepherds, singing angels and camel riding kings. Then a young child who grows up and just tells everyone to love each other before some rather nasty people do him in.

If this is the story, we convince ourselves sums up Christmas and the sappy Christian Faith it is no wonder we can find God vague and distant and no answer to our fears in a turbulent world.

But that's not the way the Bible tells it at all. The way the Bible tells it, well, that's not really a story you would want to tell children.

Mary was a frightened pregnant, unmarried teenager, who could have been executed for her apparent betrayal. Joseph a shocked and shamed husband to be. Both were living in a country subject to a brutal occupation, forced to make a perilous journey, Mary heavily pregnant, probably in pain. A baby born in the muck and dung of a place where animals lived, to parents out of their depth and with no idea of what was to come. A terrifying encounter with the supernatural for Shepherds, social outcasts risking their livelihood to visit and wise men struggling against the odds to bring gold: sign of wealth, frankincense: sign of kingship, and myrrh: an embalming spice and signifier of death, to Bethlehem, the place where lambs were bred to supply the temple with sacrifice. Dreadful portents of the child's life to come.

Gold which the terrified couple would need to run for their lives when a psychopath king would order genocide to protect his throne.

A child who grows to be a man who challenged the hypocritical religious elite of his day, who hung around with prostitutes and criminals, the lost, the lonely and the most shunned people in society. A man who reminded people that faith isn't about rule keeping or appearance, it is about forgiveness and love and who was prepared to die to prove it.

This is no rose-tinted story for children. This is the real story of the first Christmas and the Christian faith: joy, and wonder, yes. But also, blood and guts and pain and horror, because this is not just a story, it is real life. The account of the co-creator of the universe one moment omnipotent the next bound in human flesh, wriggling, mute and helpless. So easy, in this season, to forget the pink fingers and toes wrapped in swaddling clothes would, thirty something years later, be nailed to a cross for us.

This is no disconnected theological concept but God becoming like us, raw and real. This is the God who knows exactly what it is to be human, the complex, painful, frightening, joyful, wonderful reality of our daily lives.

This is a story of God who came right here to wade in the dirt and muck of our lives; with us, for us, for love of us. This is the real power of the story of Christmas.

On Christmas Day, God declared "I am with you. I am for you. You will never again be alone". So, when the world seems full of madness, when we feel powerless and without hope, we just need to remember the God we believe in has been exactly where we are and his life, death and resurrection are the answer to all our questions and the antidote to all our fears. Now, that is a reason to celebrate this Christmas!



## ***CHRISTMAS AT ST MARY'S CHURCH, WHIMPLE.***

Sunday 3rd December 6:30pm Advent Carol Service.  
Sunday 10th December 4.00pm Christingle Service.  
Sunday 17th December 4:30pm Carols by Candlelight.  
Sunday 24th December 11.00pm 'Midnight Mass'  
Christmas Day 11.00am Family Service.

**Have a joy filled Christmas. God bless. Rev Marc.**



## WHIMPLE CHURCH

<http://churches4all.org/>

### East Clyst Churches Vision Day. (Including St Mary's, Whimple)

A short while ago a group of 50 us met to plan a future for our ten combined churches across our mission community, in the light of the many challenges they now face, I thought it might be helpful for folks across the parish to see the result of our conversations including a review of what members of the church feel about our churches, the next steps in addressing some of the concerns expressed, the and issues for the Parochial Church Council to consider.

You can read the full report on the Whimple News website. Just go to:

**[www.whimplenews.uk](http://www.whimplenews.uk)**

And click on the box that says 'East Clyst Churches Vision Day'



Your local wireless security system experts

**"LESS MESS LESS FUSS!"**

- Serving the South West since 1997
  - SSAIB registered installers
- Bespoke system surveys by engineers
- Installation, servicing and system upgrades
  - Only the best quality products used
  - A local, friendly service you can trust

**"DON'T WAIT TILL IT'S TOO LATE!"**

**CALL US TODAY ON: 01392 487032**  
[www.ellardsecurity.co.uk](http://www.ellardsecurity.co.uk)

## Lamb Hill Garden Machinery

• Sales • Repairs



• Servicing

Andrew has over 20 years experience  
in the garden machinery industry.  
Previously at Otter Nurseries & more  
recently at P.J.Flegg.

**FOR ALL YOUR GARDEN MACHINERY NEEDS**

**CALL ANDREW TODAY**

**01404 823100/07773 579072**

Moorview Industrial Estate Straightway  
Head Whimple Devon. EX5 2QT

Email: [lambhillgardenmachinery@hotmail.co.uk](mailto:lambhillgardenmachinery@hotmail.co.uk)



# WHIMPLE VICTORY HALL at the heart of our community

Registered Charity 291496  
Run by volunteer Trustees



## THE VILLAGE HALL EXTENSION PLAN UPDATE

The village hall team is committed to providing the village with a second hiring hall. This is the 4<sup>th</sup> time in the 100 year history of the hall that Trustees have attempted to rebuild or extend.

**Please support us as best you can – every bit of help is valuable.**

We are about to launch a '100 Club' Lottery draw. We've called it the 250k Club because that's the amount of money we need to raise – more information can be found in this edition. If you would like to contact me, Sue Ayres, email [sueayres1@btinternet.com](mailto:sueayres1@btinternet.com)

**In the meantime we wish you all a very merry Christmas and a happy New Year.**



## Otter Care Services



**Specialist and trusted provision of domiciliary care services to support an individual in their own home in Ottery St Mary and the surrounding area.**

With over 20 years' nursing experience in the community and within the care sector, Christine provides that additional support with day-to-day household tasks, personal care or any other activity that allows an individual to maintain their quality of life and independent living.

Services include:

- Companionship
- Getting up & putting to bed
- Support with medication
- Escorting to appointments
- Overnight care
- Social outings
- Shopping
- Wellbeing Support
- Personal care
- Home help
- Meal time assistance
- Family Support

**Contact Christine on:**

**Tel: 01404 813315. Mob: 07984 150696**

**Email: [ottercareservices@hotmail.com](mailto:ottercareservices@hotmail.com)**



# *Christmas Eve Carols In The Square*



*7pm*

*(In the church, if the weather is bad)*

*Musicians too -*

*music in advance from:*

*[empalmusic@gmail.com](mailto:empalmusic@gmail.com)*

*Mulled wine available from Whimble Stores*



*Collection in aid of  
Devon Freewheelers -  
Blood Bike Service*



# KILN-DRIED HARDWOOD LOGS

IDEAL FOR OPEN FIRES AND WOODBURNING STOVES

Beech - Birch - Ash - Sycamore - Oak - etc  
Free sticks with every load



For Helpful Advice and Prompt Deliveries  
Telephone Exmouth (01395) 277242

*The key to your future peace of mind*

**Marsh Barton**  
**01392 277467**

Units 1,2 & 6 The Space Place  
Alphin Brook Road  
Marsh Barton  
Exeter EX2 8RG



(South West) Ltd.  
MASTER LOCKSMITHS  
EST 1974

**Sidwell Street**  
**01392 217328**

131 Sidwell Street  
Exeter  
EX4 6RY

**email: [sales@guardiansecuritysw.co.uk](mailto:sales@guardiansecuritysw.co.uk)**  
**[www.guardiansecuritysw.co.uk](http://www.guardiansecuritysw.co.uk)**



## Reiki Healing

An alternative, holistic form of healing



Reiki may help you with

- Stress
- Anxiety
- Being overwhelmed
- Chakra balancing
- Pain management
- Spiritual connection
- Relaxation

**1 hour session £45**

**30 minute session £25**

**Distance Reiki £25**

My Reiki for Menopause feels like a nourishing pamper session and focuses on your needs. You get to choose crystals and incense that I will then use during the Reiki, then afterwards select an Oracle Card and receive a short reading. It's magical!



**45 mins £30**



To book Reiki or a Reading, contact Kerry: 07791 171821

kerry@chi-quilibrum.com www.chi-quilibrum.com 40 Slewton Crescent, Whimble, EX5 2QA



## Chi-quilibrum

Chi (oh-ee) noun: the circulating life energy  
Equilibrium (ek-wi-lib-ri-ee) noun: a state of balance

## Tarot Readings



First recorded in the 15th Century as an Italian card game, Tarot Reading is often misunderstood and seen as something of a dark art...it's not! A reading can give you a different perspective and can help you highlight blockages in your life.

**45 mins reading £30**

- **Water pump**
  - supplies
  - repairs
  - installation
  - fault diagnostic
- **Private water supplies**
- **Filtration**
- **General domestic plumbing**

# DPPS

**07738 470274**

*Friendly, professional  
Whimble-based service*

[chris@dpps.uk](mailto:chris@dpps.uk)

[www.dpps.uk](http://www.dpps.uk)

**Devon Pump & Plumbing Services**



**making  
music**



**Musical Director:  
Emma Palmer**

**Two Charity Christmas Concerts:  
Wednesday 13 December 7.30pm**

**at Feniton Church**

**Friday 15 December 7.30pm**

**at Talaton Church**

**Free admission—retiring collection**

# Christmas Quiz



## ROUND 1

**FESTIVE FOOD. Identify these traditional dishes or drinks by their ingredients**

1. 100g mixed dry fruit with peel, 180ml apple juice, 7g dried yeast, 250g plain flour, 30g blanched almonds, pinch cinnamon, pinch allspice, pinch ground cloves, 75g marzipan, 10g melted butter, 1tbs icing sugar
2. 8 rashers streaky bacon, 16 chipolatas, 16 dry sage leaves, 1tbs honey
3. Cinnamon stick, 2 star anise, 4 cloves, 2 strips lemon zest, 4 tbs caster sugar, 750ml red wine, 8 sponge fingers, 75mls sherry, 1 x 400g pears, strawberry jam, 10 ratafia biscuits or macaroons, 600ml vanilla custard, 300mls double cream, 25g flaked lightly toasted almonds
4. Roasted chestnuts, walnuts, cashews, dried apricots, red onion, garlic, parsnip, carrot, rosemary, thyme, flour, sage leaves (optional), chia seeds (optional)

## ROUND 2

**MUSICAL NUMBERS. Remember the year of these Christmas Number Ones (and who sang them for bonus points!)**

1. Mary's Boy Child - Oh My Lord
2. Earth Song
3. I Love Sausage Rolls
4. Green Green Grass of Home
5. Somethin' Stupid

## ROUND 3

**KNOW YOUR GREENS. Name these popular Christmas plants**

1. HEDERA Helix
2. PICEA Abies
3. ILEX Aquifolium
4. VISCUM Album
5. EUPHORBIA Pulcherrima

## ROUND 4

**FASCINATING FESTIVE 'FACTS' (well sort of facts!!)**

1. When did people start sending Christmas cards? A: 1743 B: 1803 C: 1843
2. How long did it take Charles Dickens to write 'A Christmas Carol'?  
A: 6 Days B: 6 Weeks C: 6 Years

3. Santa have to go to deliver all his presents around the world on Christmas Eve?  
A: 650 miles/sec B: 6500 miles/sec C: 65000 miles/sec
4. How many US States grow Christmas Trees? A: 30 B: 40 C: 50
5. Which was the first Christmas song in space? A: Jingle Bells B: Rudolph the Red Nosed Reindeer C: White Christmas

### ROUND 5

**JOLLY JUMBLES . Unscramble these anagrams for typical Christmas items**

1. Fit garishly
2. Miss Chatterer
3. Knife scanner
4. Casual ants
5. Amber gardening

### ROUND 6

**SPOT THE DIFFERENCE. Find the differences in these jolly snowmen**





DAN PLANK

# Master Thatcher

T: 01404 823081



M: 07881 942516

daniel.plank@yahoo.com  
djpmasterthatcher.co.uk



The Devon Celtic Band For All Occasions

See our new website: [slackmagirdle.net](http://slackmagirdle.net)

Find us on Facebook

for more details or to contact us:

01404 823083 empal1@icloud.com

New look, same great band!



# EVERGLOW Chimney Sweeps

Whimpe based and your LOCAL sweep

NO MESS, NO FUSS

APICS Member, Fully Insured

Tel: 07522 619308

Email: [everglowchimneys@gmail.com](mailto:everglowchimneys@gmail.com)



**SFA APPROVED  
CHIMNEY SWEEP**

AF VW camper hire  
Farrington, Devon,  
EX5 2HY

Tel: 07952 230199  
email: [angela@afvwcamper.co.uk](mailto:angela@afvwcamper.co.uk)  
[www.afvwcamper.co.uk](http://www.afvwcamper.co.uk)



near Crealy,  
Westpoint &  
Exeter airport



AF VW  
camper hire

## Discounted rates

Living or working in Devon and the Southwest ?

We offer the following discounts off the price listed on our website  
(subject to acceptable proof of being Devon/SW based):

**Dec-Feb 20% off listed price**

**Mar-May 15% off listed price**

**Jun-Nov 10% off listed price**

**Supporting businesses and the local community in  
Devon and the South West**

Dear neighbours,

I hope this finds you all safe and well in the run-up to Christmas. The eagle-eyed amongst you may have noticed that my regular surgery schedule will see December and January slots very close to, or on, public holidays over the festive season – I can confirm my surgeries on 18th December and 1st January will be going ahead as normal. I will also be available by the usual channels throughout the Christmas break.



Last update, I mentioned an upcoming review of East Devon’s ongoing public toilets plan. I’m pleased to say that works on the first round of major public toilets at key locations in Exmouth, Sidmouth, and others will be undertaken this Winter season, with a further round due in Winter 2024/25. Talks are ongoing for towns and parishes to take on the remaining facilities not earmarked for upgrade, but while government continues to refuse to fund public toilets as a statutory service, and with continuing pressures on local council budgets, the future of these other facilities unfortunately remains uncertain.

On the emerging East Devon Local Plan, I and other local ward members have recently raised concerns regarding the lack of attention thus far to ‘green wedge’ policy, which limits development in areas of countryside between towns and villages that otherwise might be at risk of coalescence. As many of you will know, the current Local Plan includes a green wedge between Whimple and Cranbrook; at Strategic Planning Committee, I have called for a report early in 2024 with updated proposals for this and other green wedges in East Devon, and will be fighting hard to make sure our green wedge is preserved in the new Local Plan. I also understand that there should be a consultation on the green wedge policy, as well as some other issues, at some point in 2024.

A little closer to home, a number of you continue to raise issues with me regarding the shocking state of some of our local roads. I’d like to reassure everyone that these concerns are being heard – I am submitting reports to Devon Highways, and where necessary to our County Councillor, on a regular basis – and that Highways are, I understand, continuing to visit and inspect all reports of issues. Regrettably, ongoing serious budgetary challenges at Devon County, as well as some of the very poor weather we have had recently, continue to restrict Highways’ ability to quickly undertake non-critical repairs.

Finally, though on a related note, I’m aware of residents’ concerns regarding the safety of the public footpath from Dince Hill Close to the Square. The Parish Council and I are working urgently to find out who is responsible for the footpath and to ensure that repairs to the safety railing are undertaken as soon as possible. In the meantime, please do take care if you are using this route.

As always, if there are any issues you'd like to raise with me, I'm available at [todd.olive@eastdevon.gov.uk](mailto:todd.olive@eastdevon.gov.uk) or on **07925 847933** to discuss or make an appointment. My regular, no-appointment surgeries are ongoing at The Hive, opposite the Thirsty Farmer, where I'm available 4pm-7pm on the first Monday, and 8am-12pm on the third Monday, every month – it'd be great to see you.

**Cllr Todd Olive**

Whimble & Rockbeare ward, East Devon District Council  
Assistant Portfolio Holder for Coast, Country & Environment



# Front Row Club

WHIMPLE

Our film nights allow you to see the best of current releases, along with some classic favourites, in friendly surroundings, soft chairs and free of all the hassle or travelling to surrounding cinemas. People come from far and wide, so it's not a closed shop! The showings are generally on Saturdays, once a month, in Whimble Victory Hall.

### How the Front Row Club Operates:

- Doors open at 7pm for 7.30pm.
- The show starts with a short B movie
- There is always a strategically-timed interval - ice creams, tea, coffee, and nibbles
- BYO alcohol and glasses
- Full season membership (September – June) is £20.00
- Temporary memberships for visitors are available on the door for £4.50 per month - everyone is welcome

### Dates for 2023/4 Film Season

Saturday 16<sup>th</sup> December  
Saturday 13<sup>th</sup> January  
Saturday 10<sup>th</sup> February  
Saturday 16<sup>th</sup> March  
Saturday 13<sup>th</sup> April  
Saturday 11<sup>th</sup> May  
Saturday 8<sup>th</sup> June



View our latest newsletter to see what's showing: <https://tinyurl.com/WhimbleFRC>



**GEOFF  
DELVES  
ROOFING**

**YOUR FRIENDLY, LOCAL ROOFER,  
WITH OVER 30 YEARS IN THE TRADE**

**PLEASE CALL ME IF YOU WOULD LIKE  
A QUOTE FOR ANYTHING FROM  
REPAIRS, FLAT ROOFING AND  
TILE REPLACEMENTS, TO A FULL ROOF  
INSTALLATION OR SLATE WALL  
CLADDING.**

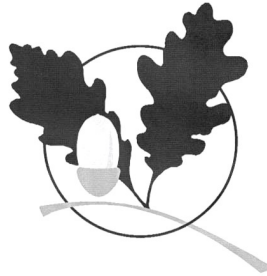
**07939 879305**

**01404 823258**

**(WHIMPLE)**

## Oak Building Services

*Quality works at competitive rates*



---

renovations  
extensions  
patios & fencing  
decoration  
bathrooms  
kitchens  
roofing  
carpentry  
maintenance

---

*References for all past projects available*

Contact Trevor Oakaby

at Brickyard Cottage, Whimple EX5 2PP  
on 01404 822655 evenings & weekends



## EASTERBROOK, EATON LTD



Chartered Accountants-Registered Auditors

**Relax!.....let us take care of all your Taxation,  
Accountancy and Business affairs.**

For a *free initial consultation*, contact us at  
8 Jesu Street, Ottery St. Mary, EX11 1EU

**Tel: 01404 812555**

Email: [advice@ee-osm.co.uk](mailto:advice@ee-osm.co.uk)

Web: [www.easterbrooks.co.uk](http://www.easterbrooks.co.uk)



# Ley's Aerials

Tel: 01404 821611

Mobile: 07866 464411

E-mail: leysaerials@gmail.com

Chris Ley

Nuttaberry, Church Road

Whimple

EX5 2TA

Freeview HD

freesat HD

- Aerial & Satellite Dish Installations & Repairs
- Freeview & Freesat Reception Solutions



Book Online at: [www.leysaerials.com](http://www.leysaerials.com)

## drainwizard

*Drainage and water main solutions*

- blockages
- jetting
- CCTV surveys
- repairs
- lining
- drain tracing
- pitch fibre reforming
- pipe bursting
- septic tank/treatment plant installation
- soakaway problems
- water leak detection
- water leak repairs
- moling
- renewals
- Patio, Driveway & Decking cleaning

Tel: 01392 461670

Mobile: 07834 712345

[www.drainwizard.co.uk](http://www.drainwizard.co.uk)



# Connect 5

CHANGING THE CONVERSATION ON MENTAL WELLBEING

Exciting news for Whimple...The launch of the Whimple Mental Health and Wellbeing Community Hub in January 2024.

I am piloting this community hub starting right here in our own community. Anyone can become involved and I am launching with the Connect 5 programme (3 half day modules) which the team at The New Fountain Inn have very kindly offered to host on the 9th, 16th and 23rd January 2024. I will be offering further dates into February. The programme will be fully funded by Devon County Council (Public Health) and I will be delivering the 3 modules between 0900-1230hrs. Tea and Coffee will be available but I do need a minimum of 6 delegates on each module to offer this for free. To reserve your space contact me on 07736-727209 or email at [nick@metheleader.co.uk](mailto:nick@metheleader.co.uk) or contact me via my website at [www.metheleader.co.uk](http://www.metheleader.co.uk)

Connect 5 is about you and those around you and how we can support each other at home, in the workplace and the community as a whole. Everyone is very welcome to take part...the initial pilot which I ran earlier this year in Whimple had a diverse group ranging in age from 18 to over 80. We all have struggles from time to time with our health both physical and mental and this Mental health and Wellbeing community hub is there to support us all. Please contact me for a chat and to book your place on the first Connect 5 course.

Connect 5 gives you practical skills, tools and techniques to use in everyday conversations so you can:

- Empower others to gain insight into current difficulties impacting their mental wellbeing
- Coach them to take action to feel better
- Motivate them to continue to take action for mental wellbeing
- And, the bonus is that everything you learn can work for you in your own life

Nick Jarrold

## Make a Difference

Become confident, skilled and equipped to make a positive impact on your own and others' mental wellbeing

Connect 5



“It's Life Changing!”

Connect 5 gives you practical skills, tools & techniques to use in everyday conversations

# WHIMPLE AND BROADCLYST YFC

CHRISTMAS TREE  
COLLECTION

6TH JANUARY 2023

Collecting from :  
Whimple  
Broadclyst  
Clyst Hydon  
Talaton  
Clyst st Lawrence  
Hele  
Bradninch  
Poltimore  
West Hill  
Ottery St Mary  
Woodbury  
Exmouth  
Budleigh  
and everywhere in  
between!

To book your tree in  
please contact  
Ceci 07494 751676  
or  
Hannah 07841 913776

MINIMUM  
DONATION £5  
A TREE

Raising money for RNLI  
and FCN

All trees disposed of  
responsibly





## CARPENTER, KITCHEN FITTER JOINER

INNOVATIVE.COMPETITIVE.REPUTABLE  
EXCEPTIONAL STANDARD OF COMPLETION  
FLEXIBLE TO ALL CLIENTS PRECISE NEEDS

### HENRY TETLEY

### 0786865842

EMAIL: [buildwithtetley@gmail.com](mailto:buildwithtetley@gmail.com)

SCAN QR CODE TO ACCESS MY ONLINE  
PORTFOLIO OF WORK



Consistent  
quality care at  
every visit



Your Care | Your Choice | Your Hub

Tell us the  
support you're  
looking for



Review the  
profiles we  
send you



Choose who  
you feel is the  
best for you



### 01392 982 832

[exeter@hubcaresupport.co.uk](mailto:exeter@hubcaresupport.co.uk)



# PEST CONTROL DIVISION



## KIERON 07977 648791



email: [greenrockgap@gmail.com](mailto:greenrockgap@gmail.com)



**SARAH JANE'S**  
UNISEX HAIRDRESSERS • WHIMPLE

Open Tuesdays to Saturdays from 9am

To book an appointment ring **01404 823400** or **07494 365547**  
or book through my Facebook page

New Inn Cross, Whimble EX5 2TT. Tel 01404 823 400

 **ABACUS**  
Stone Conservation

**Masonry & Conservation  
Specialists**

Repairs to Listed  
and Historic Properties  
Traditional Lime Mortar Repointing  
Brick Repairs - Walling

Clyst St. George, Near Exeter

Tel: 01392 879824 Mob: 07825 698507

Email: [info@abacusstoneconservation.co.uk](mailto:info@abacusstoneconservation.co.uk)

Web: [www.abacusstoneconservation.co.uk](http://www.abacusstoneconservation.co.uk)

## Window Cleaner

High reach hot water system  
Frames and doors all in  
Gutters/Fascias Cleaned

For that personal service

**Sean  
Harris**  
**814963**  
07737 419077



©2007 Clippings.com

# Avalon

PLANNING & HERITAGE

Avalon provides advice on an array of planning and historic building issues, adding value to larger or more complex projects, providing a bespoke service to suit any requirement.

Whether you intend to construct a new building(s), expand your current site, adapt an existing structure or evaluate an investment opportunity, it makes sense to consult a professional who shares your aspirations.

11-15 Dix's Field, Exeter  
01392 581150 (also in Whimble 823617)  
07979 518976

[murray@avalonplanning.co.uk](mailto:murray@avalonplanning.co.uk)

[www.avalonplanning.co.uk](http://www.avalonplanning.co.uk)

Shelley  
Spry



## Tale Valley Care

Unit 6 Lees Meadow  
Talatun EX5 2SG  
[info@talevalleycare.co.uk](mailto:info@talevalleycare.co.uk)  
07873 240459

Providing Personal Care Services in your home

**Other services offered include:**

- Washing
- Ironing
- Shopping
- Driving to appointments
- Chaperone

NVQ qualification in lead adult care  
Insured and DBS checked

# Apsleys

CHARTERED  
ACCOUNTANTS

Accountancy  
Taxation  
Payroll  
Probate Services  
R&D Tax Credits  
Corporate Finance  
Company Secretarial

[tiverton@apsleys.com](mailto:tiverton@apsleys.com)  
01884 257725

# A Window on Whimble's Weather – September/October 2023

As if to make up for an un-summery August, September started with two weeks of hot, sunny weather but was followed by torrential downpours mid-month. October was also a warm but rainy month.

Slewton Crescent Weather Station: <https://bit.ly/35qwR9K>

Cobden Lane Weather Station: <https://bit.ly/3bt3FTf>

**September** – In contrast to the cool wet weather at the end of August; September brought almost two weeks of the hottest, record-breaking conditions for temperature and sunshine, nationally and locally. Widely reported as being the result of climate change, stable, high pressure dominated the UK for two weeks. Whimble's hottest day of the month was the 4th with almost 30°C, not quite reaching the 31°C in June. Apart from thunderstorms on the 11th; almost no rain was recorded for the first two weeks. That all changed on the 16th and 17th where 67mm of rain fell over two days – contributing to over half the month's total of 129.6mm and resulted in some flooding around Whimble. Despite the long dry start, September's rainfall was over double the local average of 60mm. Fortunately Storm Agnes (27th/28th) barely affected Whimble.

**October** – Like September, October was also warm and wet with over 35% more rain than average and a particularly warm spell between the 6th and 10th with 3 days of maximum temperatures around an unseasonably warm 25°C; over 10°C above the average maximum. However, the overall average maximum and minimum temperatures were slightly higher than usual (2°C and 1°C respectively). The wettest day was the 23rd, contributing 22mm of rain to the monthly total of 126mm, well above the average of 93mm. Like storm Agnes, storm Babet did not significantly affect Whimble but came with some quite heavy rain on the 18th.

2023	September	Date	October	Date
<b>Warmest Day</b>	29.7 °C	04/09/2023	25.3 °C	09/10/2023
<b>Coollest Night</b>	4.6 °C	23/09/2023	0.7 °C	15/10/2023
<b>Windiest 24hrs</b>	37.0 km/h	20/09/2023	29.5 km/h	13/10/2023
<b>Wettest 24hrs</b>	50.8 mm	17/09/2023	22.4 mm	23/10/2023
<b>Av. Maximum</b>	22.0 °C	N/A	17.5 °C	N/A
<b>Av. Minimum</b>	12.1 °C	N/A	8.9 °C	N/A
<b>Total Rain</b>	129.6 mm	N/A	126.0 mm	N/A
<b>Total Sunshine</b>	96.3 kWh/ kW	103.6% of Av.	73.5 kWh/kW	99.2% of Av.

Note: Wind data is from Cobden Lane, while other data is from Slewton Crescent. Some rain adjustments were made during September to compensate for sensor maintenance.

**Phil Dominy & David Brewer.** Please send any comments / questions to [dominypr@hotmail.com](mailto:dominypr@hotmail.com)

# A Merry

## Christmas and New Year

(As best we know. If in doubt contact



		St Mary's Church Services	Whimble Stores	M
Saturday	December 23rd 2023		Normal	
Sunday	December 24th 2023	11pm - Midnight Mass	9am - Noon, then from 7pm for Carol Singing	
Monday	December 25th 2023	11am - Family Service and Holy Communion	Closed	
Tuesday	December 26th 2023		8am - Noon	
Wednesday	December 27th 2023		8am - 6pm	
Thursday	December 28th 2023		8am - 6pm	
Friday	December 29th 2023		8am - 6pm	
Saturday	December 30th 2023		9am - Noon	
Sunday	December 31st 2023		9am - Noon	
Monday	January 1st 2024		8am - Noon	
Tuesday	January 2nd 2024		8am - 6pm	

# From the Whimble



# Christmas

## Year Opening Hours

(the organisation for confirmation)

Millstone Garage	Ottery and Whimple Surgeries	The Jack in the Green	New Fountain
Normal	Closed	11am until Late Food Noon- 9pm	Normal
Closes at 8pm	Closed	11am - 10pm Food Noon - 8.30pm	11am - 11pm Limited Food - Noon - 6pm
Closed	Closed	Closed	11am - 1.30pm for Drinks only
Closes at 8pm	Closed	Closed	Noon - 8pm for Drinks only
Normal	OPEN - Usual Hours 8am- 6.30pm	Closed	Closed
Normal	OPEN - Usual Hours 8am- 6.30pm	Closed	Closed
Normal	OPEN - Usual Hours 8am- 6.30pm	Closed	Normal
Normal	Closed	Closed	Normal
Closes at 7pm	Closed	Closed	11am - 1.30am Drinks Only
Closes at 8pm	Closed	Closed	Closed
Normal	OPEN - Usual Hours 8am- 6.30pm	Closed	Normal



## Simple News Team

# Grandisson

## FIRES, FIREPLACES,



## STOVES



## & DECORATIVE PLASTER

FREE ADVICE AND SURVEYS  
EXPERT AND QUALIFIED FITTING BY OUR OWN FULLY SKILLED TRADESMEN  
VISIT OUR LARGE SHOWROOMS

GRANDISSON, 26-28 FINNIMORE IND. EST, OTTERY ST MARY, EX11 1NR  
TEL: 01404 812876



## O'DELL PLUMBING & HEATING

[jasonodell.plumbing@gmail.com](mailto:jasonodell.plumbing@gmail.com)

07974 818833

FOR ALL TYPES OF GAS AND OIL HEATING INSTALLATIONS.  
BOILER SERVICE, REPAIR & BREAKDOWNS.  
BATHROOMS & SHOWERS.  
UNVENTED HOT WATER SYSTEMS.  
UNDERFLOOR HEATING.



4094



Make yours a  **Cotley Christmas** 

Open 25<sup>th</sup> November – 24<sup>th</sup> December

**BOOK YOUR  
TICKETS  
ONLINE**



- CHRISTMAS TREES -
- REAL REINDEER -
- NATIVITY BARN -
- FESTIVE FARM SHOP -
- TAKEAWAY REFRESHMENTS -

**TICKET  
REFUNDED  
IF YOU BUY A  
CHRISTMAS  
TREE**



[WWW.COTLEYCHRISTMAS.CO.UK](http://WWW.COTLEYCHRISTMAS.CO.UK)

  @COTLEYCHRISTMAS



**COTLEY FARM, WHIMPLE,  
EXETER, EX5 2QR**



**COTLEY FARM**  
  
**CHRISTMAS**



# Longfield Cattery

heated single and double chalets  
personal care and attention



*(now also looking after small animals)*



01404 822275

stephen@longfieldcattery.co.uk

www.longfieldcattery.co.uk

Longfield ~ Church Road ~ Whimple ~ Exeter ~ EX5 2TF

# AERIAL SERVICES

## (Mike Cummings)

- Same Day Service Available
- 7 Days A Week
- Sales, Service, Installation
- Repairs & Reception Problems
- Digital Aerial Upgrades



- NO CALL OUT CHARGE
- FREE ESTIMATES

01392 279513 07836 641635

www.aerial-services-mikecummings.co.uk

Always FREE delivery  
to Whimble  
(no min. order value)



Have you tried our  
NEW 'Devon Dapple'  
cloudy cider yet ?



Traditional, Cloudy, Fruit and Low-Alcohol

**CIDER** - available in bottles,  
3L pouches and 20L bag-in-boxes.

**APPLE JUICE** - still and sparkling

From our ancient  
**Whiteways Orchard in Whimble**

**THE EXE GIN**  
Grumblebee Honey Spiced Rum



Order online:

[www.courtneysdrinks.co.uk](http://www.courtneysdrinks.co.uk)

01404 890093 (Mon-Fri / 9am-5pm)

Also available at:

Jack in the Green, New Fountain Inn,  
Whimble Cricket Club and Whimble Stores

'Whimble's very own drinks producer'



Scan me to order

# Whimble History Society



Many of you may be unaware that upstairs at the Whimble Heritage Centre we have an extensive archive of documents and photographs relating to the history of the village. It covers the activities of village clubs and societies such as the Cricket Club and WI, community buildings such as the village hall as well as private houses (we might have some interesting information about the history of *your* home), and of course the world famous Whiteway's Cyder company. A selection of documents and photographs from our archive are put on display each year in the Heritage Centre.

All of this has been very ably maintained for some years by our volunteer archivist, Gill Smith, who devotes many hours to sorting and filing the considerable volume of documents that come our way, and to answering queries, particularly from members of the public researching the history of their families. If Gill is not able to answer a query about the history of a Whimble person or family using our archive then another of our volunteers, Jenny Holmes, is sometimes able to find information from other sources. This information is then relayed to the enquirer and added to our archives. The History Society committee are extremely grateful to Gill for her meticulous dedication and to Jenny for all the assistance she provides.

During our summer season (1st April - 30th September) Gill is often available at the Heritage Centre on Wednesday afternoons during opening hours (1-3pm) to answer queries. You can make an appointment to visit the archive at other times by contacting her through our website [www.whimble.org](http://www.whimble.org) or by telephoning 01404 822499 and leaving a message on our answering machine.

Owing to rising running costs, particularly electricity, we have recently increased our charges for consulting the archive for the first time since 2005. It is still free to visit the archive (although a donation towards the running costs is always welcome), but if you would like Gill and Jenny to undertake research on your behalf then the charge is now £12 per hour payable in advance with any overpayments being refunded. In line with other archives there are modest charges for providing copies of documents or photographs - full details can be found on our website.

Finally, if you have any documents or photographs relating to the history of the village that you would be prepared to donate to the History Society then we would be delighted to hear from you. It is a wonderful way of ensuring that the history of the village continues to be preserved for future generations.

# Billy Bloomfield Whimble Handyman

Window Cleaning, Lawn Cutting, Strimming, Hedge Cutting, Garden Clearance, Shed Erecting, Fence Erecting, Erection of Wooden Lean To, Fence Staining, Patio Laying, Patio Cleaning, Decking Cleaning, Decking Assembly, Jet Wash Driveways and Paths, Painting (Inside & Out), Gutter Cleaning, Gutter Renewal, Facias and Roof Repairs (10 Years Roofing Experience)



Home: 01404 822345  
Mobile: 07759 466671

## PEK BUILD

### BRICKWORK&MASONRY

New build-extend-refurbishment-renovate  
alteration-barns-hard landscape-repairs

Your friendly, reliable local tradesman

No job too small.

Telephone Mark on

**822913 or**

**07817097721**

Email - [mproberts@live.co.uk](mailto:mproberts@live.co.uk)

3 The Signals  
Talatou Road  
Whimble  
Exeter  
EX5 2QL



City and Guilds  
Qualified



Stables and Grazing

for Horses and Ponies

Good private location

Whimble 1 mile. POA

Call John

**01404 822232**

# Rochelles' Curtains, Blinds and Foam

Phil-kendall@hotmail.co.uk  
07525 618286 (Phil)

We come to you  
for measuring, quoting and fitting

Made to measure Curtains and Blinds  
Wide selection of fabrics  
Tracks and poles  
Fitting service  
Free measuring service  
In-house making service  
We also make with your own fabric  
We make covers for foam cushions

FOAM cut to size for upholstery/caravans/boats etc.  
Revive old furniture  
Upholstery foam/Closed cell foam/Memory foam toppers  
Polystyrene bead for bean bags

LOVELY VENUE  
with  
PARKING  
&  
UNDERFLOOR  
HEATING

## YOGA

WITH SARAH



**TUES 6.30 - 7.40pm** (evening unwind)  
**THURS 9.30 & 10.45am** (morning flow)

at

**THE HUB, WILLOW VIEW PARK,  
STRAIGHTWAY HEAD, WHIMPLE**

**Suitable for all levels**

**£9/class or 6@£48**

Contact [reviveguernsey@gmail.com](mailto:reviveguernsey@gmail.com)

**07591 599162**





# the mindful gardener

*What business do I have  
in the woods if I am thinking of  
something out of the woods?*


Thoreau

 Mindful maintenance of  
the garden you have  
created

 Mindful planting schemes:  
transforming your desire into a design  
that works for its purpose

 Mindful of your current  
wishes for your garden

 Mindful of the  
environment

 Mindful attention  
to special plants

 Mindful of  
biodiversity

....giving you peace of mind

For more information contact Elaine Nicholas 07917386254 elaine@danublu.org.uk





# *Christmas Performance*

**Monday 18<sup>th</sup> December 2023**

**At 2.00 pm**

**Aylesbeare Village Hall, EX5 2BS**



**Refreshments included**

**Free event - everyone welcome**

**Donations to choir funds**



# Whimble Cricket Club

Traditionally this has been a quiet time of year for the club, but increasingly cricket is active throughout the year and Whimble CC is no exception. Our women's softball team has gone from strength to strength, competing in indoor tournament days with great success. It has been fantastic to see the number of people getting involved in this. Please do contact us if you are interested in finding out more, or joining Wednesday evening training sessions. We have an extended junior winter program this year and our junior groups have been training weekly since October. It was great to see Devon Cricket show an interest in this and feature the club recently as a result. Both women's and men's indoor leagues start soon, and men's winter training nets will begin in the new year.

## **Bonfire and Fireworks Night - Thank You**

We had another tremendous Bonfire and Fireworks night. Thank you to everyone who came along and supported the event. We were again sold out, and we know that this is a disruptive evening in the village. We appreciate everyone's support for this one night of the year. The fire and fireworks were spectacular again, and we hope everyone enjoyed themselves.

## **Pavilion Booking**

A reminder that the club can be booked through the winter for daytime or evening events. It is a comfortable, versatile, and affordable space. We can arrange for a bar to be run if required. Contact James on 07989 234372, or [jameswoollam@gmail.com](mailto:jameswoollam@gmail.com) for enquires. Pricing and other information is on our website ([www.whimblecc.co.uk](http://www.whimblecc.co.uk)).

## **Looking ahead to 2024**

Plans are once again coming together for a new season. We have ambitions to challenge for promotion in Saturday cricket, our first full summer of women's softball cricket and a busy summer of junior cricket to look forward to. There are plenty of ways you can get involved, and we are always happy to welcome new players, coaches and volunteers to help things run smoothly.

We have recently released our 2024 sponsorship brochure, full of affordable ways you can support Whimble CC. Prices start from just £25 for match day sponsorship. If you, or someone you know, might be interested in supporting us then more details can be found on our website.

Season's greetings and best wishes for the new year from all at Whimble CC.

**James Woollam,**  
Chairman



# Wednesday 17th January 2024 Wassailing

This year's wassailing will start at the Heritage Centre at about 6.30pm for the usual 'rehearsal'. We'll then move off at 7.00pm towards the rear of the Heritage Centre where the first Wassail ceremony will be around the Society's Whimple Wonder tree.

The procession will then head up Church Road to Lower Woodhayes Orchard for the second wassail ceremony.

We'll then move back to the Square, via Dince Hill Close, where the procession will gather near the tethering stone to remember the Society's first Chairman, John Shepherd.

Onwards then along Town Lane and Broadclyst Road to the orchard adjacent to Knowle Cross Farm for the third and final ceremony of the evening, courtesy of Jim and Mary Chard.

The last part of call will be at the Cricket Club for traditional Wassail refreshments.

**A-wassail, a-wassail! The Moon she shines down;  
Our apples are ripe and our nuts they are brown,  
Whence thou mayest bud, dear old apple tree,  
And whence thou mayest bear, we sing unto thee.**

**Chorus.....**

**With our wassail, wassail, wassail!  
And joy come to our jolly wassail!**



**O apple tree prosper, bud, bloom and bear,  
So we may have plenty of cider next year.  
And where there's a barrel, we hope there'll be ten,  
That we may have cider when we come again.**

**Chorus.....**

WE KNOW WHO WANTS  
TO LIVE IN YOUR PROPERTY



ASK FOR A FREE VALUATION

FOR FRIENDLY AND PROFESSIONAL  
ADVICE CALL US ON 01404 814306

[www.redfernsproperty.co.uk](http://www.redfernsproperty.co.uk)



**Zoopa.co.uk**

**Lee Maddicks**

**David Drew**

# WARTS

## 2024 DATES FOR YOUR DIARY:

Monday 15th January 2024  
Monday 25th March 2024  
Monday 15th July 2024  
Monday 14th October 2024



We would kindly remind you:  
ALL ORDERS FOR OIL SHOULD BE PLACED AT LEAST  
ONE WEEK BEFORE THE ABOVE ORDER DATES!

(Minimum order: 500 litres. Please allow a further 10 days for delivery)  
All existing (and potential new) members with access to e-mail may contact Graham Batten with their order/\*registration at [gkbatten@btinternet.com](mailto:gkbatten@btinternet.com) .  
If you are without email you may call 01404 823317  
\*Registration to include: Name/Address/Postcode & Telephone Number

Gas & Oil boiler repairs  
Safety certificates  
Servicing  
Installations



## FlameFix™

A local company providing  
a personal service

Call Jules

### 07883 037667

Visit us at [www.flamefix.co.uk](http://www.flamefix.co.uk)  
and read why customers say  
we're highly recommended

Oftec registered  
Gas safe registered



## FIRE SECURITY

UK LIMITED

### Fire detection and alarm systems

INSTALLATION, COMMISSIONING  
& SERVICING

Maintaining all types of fire alarm systems

- Domestic, commercial & industrial
- 18 years of experience
- Emergency repairs and fault finding
- Fire certificates
- Design and supply complete systems
- Schools, lets, small/large properties

Contact Chris for a free quote

### 07875 841288

[info@firesecurityuk.co.uk](mailto:info@firesecurityuk.co.uk)  
[www.firesecurityuk.co.uk](http://www.firesecurityuk.co.uk)



We've survived Hallowe'en and Guy Fawkes night so, it's full steam ahead to Christmas. I have made my Christmas cake and the aroma for me, heralds the start of the festive season. I just need to locate unused cards and paper from last year and dust off the tree in the attic. It's also an opportunity to reflect on the year as it draws to a close on the things we've done well and those where we could have been better. As always we try to provide our members with a varied programme of speakers interspersed with some events and outings. I really hope we have achieved our aims.

On our September outing to NT Montacute, there was some disappointment in that only the ground floor was accessible due to woodworm in the staircases. It was an enjoyable day in spite of the restrictions.

Also in September, a very pleasant social lunch was arranged locally by Jane and she is currently busy arranging our Christmas lunch outing. We really do appreciate Jane's organisational skills!

In October, members welcomed a return visit from John Lowe, this time speaking about his RNLI Arctic challenge. Always such a fascinating and compelling speaker.

Late October, six members travelled in the company of storm Ciaran to Axminster to represent Whimple WI in the WI county skittles competition. Our warm congratulations to them, although they were runners up by a couple of points.

14th November we welcomed Graham Hurley who will speak about his career as a crime writer. He will bring a selection of his books for members to peruse and possibly buy as early Christmas presents.

1st December at 5.30pm. Members of your WI ran a cake stall at King's School Christmas Fayre. Please come and support us and treat yourself to home made cakes, biscuits and other goodies.

Tuesday 12th December is our members Christmas party. It will be a bring and share with quizzes, a raffle and the opportunity to make a small table decoration for the festive season. Whoo hoo!! We know how to party!!

The programme for 2024 is in its final stages. A sneak preview tells me that on 9 January Devon Freewheelers will be visiting us to speak more about the life saving services they provide.

Well that's it! If you would like more information about your WI then please contact Marilyn on 821860. May I wish you all a happy Christmas and a peaceful New Year.

**DI Eden**



## Your Mortgage Specialists

Experts Since 2007  
We can help you with...

5\* Reviews | Google & Facebook

☎ 01404 813050

✉ info@exmortgages.co.uk

🌐 www.exmortgages.co.uk

The Milking Parlour, Clapprentale Farm, EscotPark, Ottery St. Mary, Devon EX11 1LU

Your property may be repossessed if you do not keep up payments on a mortgage or loan secured against it. Exe Mortgages Ltd. is authorised and regulated by the Financial Conduct Authority (FCA). We are registered under the Consumer Credit Act & Data Protection Act and hold the appropriate licences. Exe Mortgages is entered on the Financial Services Register under reference 705340.



### CANDLELIGHT YOGA with SARAH WHIMPLE VICTORY HALL

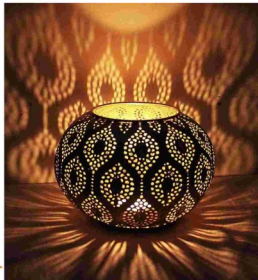
TUESDAY 19th DECEMBER 6.30-8pm

A deeply relaxing class. Suitable for all levels



YIN YOGA, YOGA  
NIDRA, & Essential  
Oils all support-

- RELAXATION
- GENTLE STRETCH
- SLEEP
- FEELING CALM & PEACEFUL



Also, YOU CAN  
SUPPORT YOUR  
COMMUNITY. There  
will be a voluntary  
collection for the  
Whimble Christmas  
Day Lunch

BOOKING ESSENTIAL by contacting: [reviveguernsey@gmail.com](mailto:reviveguernsey@gmail.com)



# WVH £250k Club



Whimble Victory Hall management trustees are launching a major fundraising drive in early 2024 to raise the £250,000 required to fund our extension plans. The £250k club will provide the local community with a great way to support us whilst having a bit of a flutter! Here's how it will work...

1. Participants pay £6 a month (or £72 annually). This buys you one membership number (that we will allocate), which enters you into the monthly draw.
2. The prizes will total 25% of the annual income and we anticipate that there will be three prizes each month. The remaining 75% will be put towards the hall extension fund.
3. We are hoping to make Direct Debits available but otherwise payment will typically be by standing order. These can easily be set up if you use mobile or online banking, or alternatively by completing a standing order mandate form which we can provide. However, if required we will also accept cheque or cash payments for lump sums.
4. The draws will be carried out by management trustees generally during monthly committee meetings. Sometimes, however, we will alter the draw date slightly to coincide with events like 'Soup n Sarnie' so that we can draw the numbers live to add to the excitement.
5. Winners and their prizes will be announced via the hall's noticeboards and via social media. The winners will also be contacted directly, so that their prizes can be paid.
6. Full rules will be available to view on our website ([www.victoryhall.org](http://www.victoryhall.org)) or on the noticeboards at the hall. Please direct any questions via email to [whimble250kclub@gmail.com](mailto:whimble250kclub@gmail.com).
7. To pre-register your interest, visit our website ([www.victoryhall.org](http://www.victoryhall.org)) or pick up a form at the hall, Village Stores or Sarah Jane's hairdressers. We will then be in touch when we are ready to launch.

Pre-register today and you could be one of our first winners!





# Devon's countryside is under threat

Now more than ever



You can help protect it.  
Join us today.

**DEVON** CP  
RE

The Voice for Devon's Countryside

**01392 966737**  
**devoncpre.org.uk**

A charitable incorporated organisation with registered charity number 1175228  
A member of the National CPRE network



# Protect our Whimple & Rockbears Group

October 2023

[www.powr.live](http://www.powr.live)

Email: [contact@powr.live](mailto:contact@powr.live)

One approaches the end of year with a sense of hope, as we prepare for the Christmas break and look forward to linking up with friends and family. It's important to remember that for many, it has been a very difficult year, with a significant cost of living crises, our pound in our pockets doesn't last so long, as inflation has been reaching pecks, not seen since the 1980. There has also been a significant strain on public services which has had knock on effect with virtually ever aspect of our lives. Then of course there is pressure from many directions to build more homes, but the question is where. In part, that is why the POW+R Group were founded in 2019.

In our village we have much to be thankful for. It is a great village to live and work in, and there is a very strong sense of community. It was that sense of community that helped in saving the New Fountain, which is well supported. It's rare these days to be fortunate enough to have a choice of two great pubs in one village. It's also a major asset to have a community focused Nursery and Primary School at the heart of our village.

## EDDC

The POW+R Group and the Parish Council Neighbourhood Team have recently had a survey from EDDC to undertake to indicate the progress of each Parish / Town Councils Neighbourhood plan. Both groups have recently had meetings to look in detail what else needs to be done and by when.

## Whimple Neighbourhood Plan

We have three sections to finish and these have been targeted to complete by mid-January, then to add, or subtract information, which is deemed, important or unnecessary. Plus to make sure that all the referencing is completed, before submitting to the Parish Councils Planning consultant. We also intend to sort out any specific points that the EDDC NP Planning officer requires attention. We have now a time frame for completion and ratification of the NP by July 2024

It is important to point out, to villagers that when the 'Village Questionnaire' was completed in 2022 every comment made, looking at the future of our village, has been recorded and forms part of the evidence trail of the Whimple Neighbourhood Plan. The analysis of all the information will be incorporated into the final document. The guiding principles of creating the NP is the concept of localism, which takes us back to housebuilding, where the parish has spoken, yes, but limited.

**POW+R Group** wishes the people of Whimple a positive and joyful Christmas

**Alan Lascelles** – Press, Publicity and WNP Team

Date: 1st December 2023



## WHIMPLE FEST 2024

### IT'S NEVER TOO EARLY TO GET EXCITED!

As the days get shorter and the weather distinctly colder, what better way to cheer yourself up than a taster of what is to come at next year's Whimble Fest? Plans are already underway and a fantastic selection of activities, stalls, entertainment, food, refreshments and community fun are being arranged for YOU.

Firstly, do save the date in your diary as it is a little earlier next year.

**SATURDAY 29th JUNE 12-5.30pm.**

Now take a sneaky peak at what is already booked -

- We are delighted to welcome **FLOTSAM THE FOOL'S CIRCUS** to the FEST. They are bringing their fabulous CIRCUS SKILLS TENT where adults and children can learn and try out their circus skills such as plate spinning, unicycling, juggling and much more.
- We certainly can't wait to see the wonderful **MR BUBBLES** again. He amazed and enchanted us all at WHIMPLE FEST 23 with a mesmerizing array of bubbles of all sizes. If you missed him last year, then you are in for a treat.



- **NEW FOOD EXPERIENCES** are planned for WHIMPLE FEST 24 with a selection of vegetarian and BBQ delights, plus a Farmers Market Area supporting local suppliers.
  - **WHIMPLE F.C Skittles Competition** will culminate at the FEST with an exciting FINAL
- FINALLY, we still need to hear from you if .....
- you would like a stall in the FARMER'S MARKET or CRAFT AREA.
  - your community group would like a stall in our COMMUNITY HUB
  - you can offer HELP IN ANY WAY ON THE DAY.
  - you can provide raffle prizes (These can be dropped off at THE PEA)
  - Contact [tallulahmahoolah@btinternet.com](mailto:tallulahmahoolah@btinternet.com)



## Your Personal Assistants

A niche group of personal assistants set up to provide top quality care and support.

Mobile: Poppy - 07786392480

Email: [saskialayburn@poppycare.org](mailto:saskialayburn@poppycare.org)



### Care, Compassion and Commitment

Dedicated farm and companion animal vets and nurses,  
caring for your livestock and pets  
24 hours a day



Cullompton  
01884 35558  
Tiverton  
01884 258585  
Honiton  
01404 44095  
Uffculme  
01884 841317



[www.valeveterinarygroup.co.uk](http://www.valeveterinarygroup.co.uk)



**PLANET SAL FOR  
GIFTS AND CARDS  
WHICH ARE A BIT  
'UNUSUAL'**

(Like the owner..)

3, BLACK LION COURT,  
HONITON EX14 1ES

**01404 45777**

**OPEN MON 11- 3**

**TUES-SAT 10- 4.30**



Covering Exeter and  
surrounding areas.



☎ **07496 961 255**

f **DE Window Cleaning Services**

**"FREE GUTTER CLEAR"**

IF YOU SIGN UP TO A REGULAR WINDOW CLEAN

LIMITED TIME ONLY DEAL

**CALL US TODAY**  
**07496 861 255**

PROFESSIONAL, RELIABLE & FULLY INSURED



**Terms & Condition Apply:**

Free gutter clean on your 7th window clean

If you are not 100% satisfied with any of our services,  
simply notify us within 24 hours and we will return & re-do  
any unsatisfactory work- It's our promise to you!



**RJ Spellman**

Renovation & Property Maintenance

.....

Carpentry & Joinery

Kitchen Fitting & Remodelling

Wardrobes & Fitted Furniture

Window & Door Fitting

Plastering & Painting

Fully Insured

.....

For a free quotation or advice please get in touch

e: [rjspellmanrenovation@gmail.com](mailto:rjspellmanrenovation@gmail.com)

w: [rjspellmanrenovation.co.uk](http://rjspellmanrenovation.co.uk)

t: 07511 533 765



**PF&A**

PREMIER FENCING & ASTRO

**QUALITY FENCING & ARTIFICIAL GRASS  
AT PRICES YOU CAN AFFORD**

**EXETER • 01392 341 315**

**EAST DEVON • 01395 205 563**

[info@premierfencingandastro.co.uk](mailto:info@premierfencingandastro.co.uk)

[www.premierfencingandastro.co.uk](http://www.premierfencingandastro.co.uk)

FENCING ■ DECKING ■ GATES  
ARTIFICIAL GRASS ■ LANDSCAPING

Following our successful Flower and Craft Show, our last coach trip of the year was a trip to the National Trust Dyrham Park near Bath. This was another very well attended trip and was thoroughly enjoyed by all who went. Fortunately, the weather stayed fine throughout the time which was perfect for the trip. Our thanks to Doreen Staddon and Brian Nelson for organising this.

Our annual Quiz was held on Friday 10th November where the little grey cells were put to the test with another batch of challenging gardening and general knowledge questions! Although not as many members were able to make it as in previous years, it was still a very enjoyable evening. Our thanks to Brian and Doreen for putting all the questions together and to Roy for operating the technology.

Our final event for 2023 will be the Christmas Wreath making workshop which will be on Friday 8th December in the Village Hall. This will be run by Sarah Dunster-Ashworth and will be an excellent opportunity to learn how to make a natural Christmas Wreath. The cost is £24.00 per person to cover the cost of materials or simply £2.00 per person to come and observe. If there are any tickets available before the date, then these are obtainable from the Whimble Stores thanks to Rory, Sharon and Sabrina for facilitating this.

Our first meeting of the new year will once again be our Annual General Meeting which will be held on Tuesday 30th January in the main hall of the Victory Hall commencing at 7.00pm. In order to make the most of the evening, following the AGM, we are very grateful to Andy Bratt who will be showing some photographs of a trip he made to Madagascar. All members and anyone else interested to see the presentation will be very welcome to attend! We would be very pleased to welcome anyone who would like to join our Committee as we really do need some new people with fresh ideas to help promote the Club.

Early in the new year we will be looking at the classes for the 2024 Flower Show and hopefully we will have a schedule out by the time we run our annual plant sale in May. So, for those of you who enjoyed the experience of exhibiting this year, the date for next year's show is Saturday 10th August 2024.

**Paul Wilson**, Chairman, Whimble & District Gardening Club

## Thank you

I would like to thank Doreen Staddon and Brian Nelson for the lovely gardening trips they have organised this year. Recently we visited National Trust Dyrham park and also Bishop's Palace Gardens, Wells, amongst other visits - all very enjoyable. We are sorry to hear Doreen is to stand down but do understand after 12 years. Hopefully, someone will be there to help Brian and 2024 will have more enjoyable outings.

**Gladys Dowding**

## Visit to Dyrham Park November 1st 2023

The last visit of the year by the Whimple & District Gardening Club to Dyrham Park was another very enjoyable day out and we were so lucky to fit it in on the day before storm Ciaran hit the West Country!

The day started with sunshine all the way on our journey to Gloucestershire, but soon after we arrived we had a period of heavy rain. This did not detract from our visit though, as there was plenty to see in the house apart from the gardens. Dyrham Park was the home of William Blathwayt, an 18th century civil servant and aid to Charles II and later William III and Mary. The house was transformed from an existing Tudor house into a baroque style mansion, largely as a result of him marrying well and acquiring lucrative government contracts, all of which enabled him to fill the house with Dutch paintings, tapestries, china and furniture. William Blathwayt's original Dutch style gardens have vanished in favour of a more modern style of 19th and 20th century style gardens. The National Trust acquired the house in 1956.

This trip was one of a very successful series of trips enabling a lot of us to visit places that we no longer feel able to visit by car. This year we have visited Trebah Gardens in April, Rosemore in June and Bishops Palace, Wells in July.

The success of these trips from Whimple over the last 12 years has been largely due to the work that Doreen( Staddon) has put in to organise things in conjunction with Brian Nelson in Ottery.

We are all very grateful to Doreen but she has now decided to stand down and the club desperately needs someone to take over Doreen's job so that these trips can continue.

Please help if you are able to.

Contact Doreen by email at [doreenstaddon@btinternet.com](mailto:doreenstaddon@btinternet.com)

### Devon Historic Churches Trust 'Ride & Stride'

'Team Turner' walking on behalf of St Mary's Church Whimple managed to walk between 7 of our churches and are delighted to have raised £625.50 for the Trust, half of which comes back to St Mary's. We would like to say a huge **Thank You** to all those generous people who by sponsoring us encouraged the two young boys to stride out even after a hard day at school. Thankfully the weather was glorious for walking in the fresh air and we all enjoyed ourselves.

Jane Clements



# FAMILY CHRISTMAS QUIZ ANSWERS



## FESTIVE FOOD

1. stollen cake
2. pigs in blankets
3. old fashioned trifle
4. festive nut roast

## MUSICAL NUMBERS

1. Boney M 1978
2. Michael Jackson 1995
3. Ladbaby 2019
4. Tom Jones 1966
5. Robbie Williams & Nicole Kidman 2001

## KNOW YOUR GREENS

1. Ivy
2. Norway Spruce (Christmas Tree)
3. Holly
4. Mistletoe
5. Poinsettia

## FASCINATING FESTIVE FACTS

1. 1843
2. 6 weeks
3. 650 miles sec
4. 50
5. Jingle Bells

## JOLLY JUMBLES

1. Fairy lights
2. Christmas tree
3. Frankincense
4. Santa Claus
5. Gingerbread man

## SPOT THE DIFFERENCE

There are 10 differences



# Community Theatre 4All

## “TOAD OF TOAD HALL

After the success of CT4A's one act plays 'The Bear' and 'The Laboratory' the company is moving on to its next production 'Toad of Toad Hall'. This is a light-hearted, well-known play written by A.A. Milne (author of "Winnie the Pooh") and is based upon the children's book 'Wind in the Willows' by Kenneth Graham. Casting is already under way. It will be an open-air production and will perform in mid-May. Rehearsals start in January 2024. The play will be great fun to work on and perfect family entertainment. Watch out for more details in the spring

### SHORT MAT BOWLS



We play Short Mat Bowls every Wednesday at 7.00 pm. We are looking for new members to join us please. Come along to the Victory Hall. You will be very welcome. Bowls can be provided.

**David Rastall.**

A massive thank you to all those kind enough to supply cakes for St Mary's Christmas Fayre and those who came to purchase them and or shared coffee and cake with us. Your support is very much appreciated.

**Jane Clements**



It has been a busy term and as we head towards Christmas, the children and their teachers are practising a variety of Christmas songs which will be part of either our Carol Service or nativity. The children are busy making decorations for our Killerton Christmas tree which will be on display in the chapel over the festive period.

Just before half-term all the children took part in our annual apple pick, and some of those picked were then pressed into juice for the children to taste.

We have had a visit from the Dogs Trust - this was useful and informative, the sessions taught the children how to correctly approach dogs and their owners, as well as what to do if they felt unsafe or threatened around a dog.

With the support of a volunteer, alongside a teacher, some of the children were involved in gardening club, this has helped to tidy up the gardens after the summer break whilst planting some bulbs in preparation for spring.



Towards the end of September, we celebrated European Languages Day. As French is our chosen modern foreign language, the children all dressed in red, white and blue for the day and were then involved in a range of activities including making crepes, using role play and translating dual language texts.

The week before half-term, the Year 6 children took part in Bikeability, the Department of Transport's national award provider for cycle training. This training involves children learning the practical skills to understand and practice how to ride on roads safely.



Throughout the autumn term, each class has had two Forest School sessions. Children have been taught some whittling skills and have been helped to make Whittled Wizards, mice and necklaces. Cooking on the fire has included drop scones. These afternoons are very popular with the children and we are very lucky to



have Mrs Wall as a qualified leader to run these sessions.

Mrs Carole Shilston

Headteacher

During this half term, the pupils in Beech Class (KS2) have been recommending books to each other. They have talked with enthusiasm about what they have enjoyed about reading a certain book and why they think others would like it. Some pupils have read aloud the 'blurb' from the back cover or shared illustrations from pages in order to encourage other readers.

Titles recommended so far have included Not My Fault and How To Be Me by Cath Howe, Ever Dark by Abi Elphinstone, Welcome To My Crazy Life by Joshua Seigal (poetry), The Search for the Black Mirror by Helena Duggan, The Winnie The Witch Series by Valeria Thomas, the Isadora Moon series by Harriet Muncaster and the Grimwood book series by Nadia Shireen. Next, we are planning to write up some book reviews and display them in the school library so that pupils in other classes can see what we have been enjoyed reading. If anyone in the village would like to hear readers in school, please contact the school office for more information.



To develop our understanding of some of Whimpe's history, we are keeping the Whimpe tradition of cider and apple picking. We are looking forward to apple pressing soon. Last term, we were focusing on teamwork and used this skill when we went apple picking. This worked effectively as we collected many apples ready for apple pressing. This term we are focussing on leadership which is important for handing in homework and getting ready for school.

In history, Willow Class are focusing on the Mayan civilization and learning about how and where they lived. In Beech Class, they are learning about the ancient Chinese. In Oak Class, they are learning about the Romans. In Ash Class they are learning about The Great Fire Of London. And finally, in Elm class they are focussing about Florence Nightingale.

**By Amelie (Y6) and Amelie (Y5)**

Looking after your trees and  
gardens for over 25 years

# Sid Valley Tree Surgery & Landscapes

TREE SURGERY  
HEDGE CUTTING  
STUMP GRINDING  
GARDEN CLEARANCE  
FULL LANDSCAPE SERVICE  
FREE QUOTATIONS



Tel: **01395 519856**

Mobile: **07880 797613**

[www.sidvalleytreesurgery.co.uk](http://www.sidvalleytreesurgery.co.uk)



## James Brewer Quality Made Joinery

Ellicombe House  
Cutteridge Lane  
Whitestone, Exeter EX4 2HE  
Tel: 07896 530640  
Fax: 01392 811604



Email: [jbrewer2410@hotmail.co.uk](mailto:jbrewer2410@hotmail.co.uk)

*(not VAT registered)*

*Please contact me for all  
your carpentry and joinery  
needs, i.e. doors, windows  
and furniture, I will be  
pleased to give you a  
quotation.*

## darren peek plastering contractor

plastering and rendering,  
dry-lining, coving,  
cob and lime specialist,  
floor-screeds,

mobile 07786514172

tel 01404 41211

[darrenpeek2@aol.com](mailto:darrenpeek2@aol.com)

<b>Devon County Councillor</b> (iain.chubb@devon.gov.uk)	
Iain Chubb	07932 459595, 01297 35468
<b>East Devon District Councillor:</b>	
Todd Olive (toddlolive@eastdevon.gov.uk)	07925 847933
<b>Parish Council</b> (whimbleparishcouncil@gmail.com)	
Chairman: Alan McArthur (cllramawpc@gmail.com)	01404 823079
<i>Clerk tbc Parish Council:</i>	
<b>Primary School</b> (admin@whimble-primary.devon.sch.uk)	
Headteacher: Carole Shilston	822584
<i>Chair of Governors: Jackie Enright</i>	
<b>Whimble School PTA</b> (Whimble.pta@gmail.com)	
<b>St. Mary's Church</b>	
Parish Priest: Rev. Marc Kerslake	822525
Impact Cell: Helen Bowker	823193
Bellringers: Marianne Randall	07834 809270
<b>Book Group</b>	
Tanya Mooney	823326
<b>Cricket Club</b> (jameswoollam@gmail.com)	
Booking Secretary: James Woollam	07989 234372
<b>Football Club</b>	
Chairman: Victoria Kendrew	07966 550260
Secretary: Lee Wheaton	077341 52120
<b>Front Row Club</b>	
email: frontrowclub@gmail.com	
<b>History Society</b>	
Chairman: David Rastall	822486
Secretary: Roger Smith	822244
<b>Over Sixties Club</b>	
Chairman: Arthur Iball	822905
Secretary: Beryl Iball	822905
<b>Pre-School &amp; Toddler Group</b> (www.whimblepreschool.com)	
Chair: Joe Pearce	823512
Information: Jo Sibley 07794 652549 or admin@whimblepreschool.com	
<b>Recreation Trust</b>	
Knowle Cross Sports Ground: Roger Smith	822244
<b>Scout Group</b>	
Group Scout Leader (and Marquee Booking): Alex Spry	822844
<b>Table Tennis Club</b>	
Chris Beer	07787 544192
<b>Tennis Club</b>	
Secretary: Viv Brown	07876 653264
Treasurer: Glenn Starkey	07967 698600
<b>Victory Hall</b>	
Chair: Sue Ayres	823082
Secretary: Di Wilkins	758459
Booking Sec: Ali Tierney	07778 681280
<b>Whimble Fest</b>	
Contact: Sue Turner	sue.turner1@sky.com
<b>Whimble and District Gardening Club</b>	
Chairman; Paul Wilson	822744
<b>Whimbletons</b>	
Cathy Bartlett-Horwood	823944
<b>Womens Institute</b>	
President: Sarah Hogg	822886
<b>Whimble and Broadclyst Young Farmers:</b>	
Chair: Hannah Gray	07841 913776
Secretary: Ceci Brayley	07494 751675

# The Whimble News Team

WN147

## Production

Bob Scanlan 822262/07845 325532  
bob@bobscanlan.co.uk

Sally Wilde 823246

Sarah Thackeray  
sarahthackeray9@gmail.com

## Advertising

Ed Hitchcock 01392 427982  
edhitch@btinternet.com

## Community Diary

## Delivery

Cathy Sharkey 822939

## Treasurer

Miles Leonard 822415

 gilbertstephens

# Local legal & financial advice

Call our Exeter office on:

Legal Services **01392 42 42 42**

Financial Services **01392 34 64 64**

Or contact one of our other offices

Ottery St Mary 01404 81 22 28

Sidmouth 01395 51 24 43

Visit [gilbertstephens.co.uk](http://gilbertstephens.co.uk) for more info

Gilbert Stephens is the trading name of Gilbert Stephens LLP which is authorised and regulated by the Solicitors Regulation Authority (no. 536070) and Gilbert Stephens Financial Services Ltd which is authorised and regulated by the Financial Conduct Authority (no 579899).





**TIME  
TO  
DREAM  
BIG**

[HALLANDSCOTT.CO.UK](http://HALLANDSCOTT.CO.UK)



CONTACT OUR OFFICE  
TODAY FOR A  
**FREE VALUATION**  
AND MORE INFORMATION  
ABOUT OUR SERVICES

**CALL: 01404 812000**  
**VISIT: HALLANDSCOTT.CO.UK**

# the Jack *in the* Green

## **PARTY, EAT, REPEAT**

It's that time of year when thoughts turn to picking a special venue for the festive period. With 30+ years experience of hosting parties and serving delicious seasonal dishes, we'll be pulling out all the stops to offer groups of any size the perfect combination of good food and good cheer.

## **NEW SEASON, NEW MENUS**

Our new menus are now live with something for everyone. Choose between pub classics, A' la Carte, a Tasting menu or our famous Sunday roast. We serve food all day at weekends and offer a large number of wines by the glass.

Don't forget we also open for Saturday brunch with Full English, veggie and vegan options.

View all our latest menus online.

**[www.jackinthegreen.uk.com](http://www.jackinthegreen.uk.com)**

**Jack hotline: 01404 822240**