

Whimble News



Feb/March 2003

What's on in Whimple

February

4th	Over 60's	Victory Hall	2.30pm
11th	WI	Victory Hall	7.30pm
15th	Young Farmers - Beetle Drive	Victory Hall	7 for 7.30pm
18th	Tuesday Talk - Over 60's	Victory Hall	2.30pm
22nd	Coffee Morning	Ferndale Hindstreet	10.30am-12.30pm
In aid of Hannah 's trip to Brazil to work with street children			
27th - March 1st	Robinson Crusoe	Victory Hall	see page 21

March

1st	Silent Auction	Victory Hall	10am - 12.30pm
8th	Big Night in - Sweet Lorraine	Victory Hall	7.30pm
18th	Tuesday Talk - Over 60's	Victory Hall	2.30pm
25th	Tennis Club AGM	13 West View Close	7.30pm

June

14th Church Fete

St Mary's Church

Monthly Programme of Services

1st	Sunday	8am	Holy Communion
		11am	Family Service
2nd	Sunday	11am	Holy Communion
3rd	Sunday	8am	Holy Communion
		10.30am	Service with a Smile
4th	Sunday	11am	Holy Communion
5th	Sunday	11am	Joint Benefice Communion

Please use the Whimple Diary held in the Post Office for checking availability of venues and booking events.
If your Association has an event which you would like listed above please contact Angela Smith on 822828 or e-mail Angela1smith@aol.com

Ed The Ed

I hope that you and your families had a peaceful Xmas and New Year.

In the hunt for a good story, we have sent our raving reporter out with his long raincoat, battered trilby and empty pint glass, scouring the village, with no thought for the weather or the state of his liver, all in the service of the News and we hope that you enjoy the results of those sacrifices.

One story is about New Year's Eve at the Thirsty Farmer, and we thank Mike and Ali for a welcome contribution to the coffers of the News. They have been superb in their support for the News over the last year, and make up the bulk of our donor's contributions – without their help we would not be here, and I wanted to recognise their kindness in this editorial. So a big 'thank you' to Mike and Ali. As a result of my last editorial, several other kind people in the village have also made valuable contributions to our budget, for which we thank you. Those donations have made all the difference to keeping our (financial) heads above water.

We also report on Xmas Eve carolling, and Wassailing – with our very own brave Queen Michelle Mallett, complete with broken wrist! This edition has the final part of the John Bliss 'trilogy', which I hope you have enjoyed – if you have any similar stories to offer, we would be pleased to see them.

What a wet few days we have had recently –but I went back to the August/September 2002 issue and reminded myself of that cracking Village week we held, especially that Sunday afternoon at Woodhayes. The sun, the warmth, the beer, the excellent company, the hog roast, the beer.....Wonderful!! It really cheered me up re-reading that edition. Fingers crossed for an equally splendid week this year!

And a final thank you to the invisible man in the engine room for the Whimble News, our very own Kevin Thompson who has done an excellent job over the last few months working with us on quality issues, sitting in the Thirsty Farmer long into the evening, educating Bob, Miles and I into the mysteries of the printing press – thanks Kevin.

Dates for contributions into the Post Office and the tender hands of Gordon O, or for emailing directly to Bob (bob.scanlan@eclipse.co.uk) – by 12 March 2003 please.

Roll on spring! (watch out for the first showing of the Alex Spry knees!!)

Ed Hitchcock

FROM MY WINDOW IN THE SQUARE

Edith Marie-Louise Grout

SED FUGIT INTEREA, FUGIT IRREPARABILE TEMPUS -

Virgil's Georgics

MEANWHILE TIME IS FLYING - FLYING NEVER TO RETURN

"Slowly, slowly, slowly the days succeed each other, days and weeks and months and years. So come the Autumn and passed, and the Winter and blossomed the opening Spring and the notes of the robin and blackbird sound so sweet".

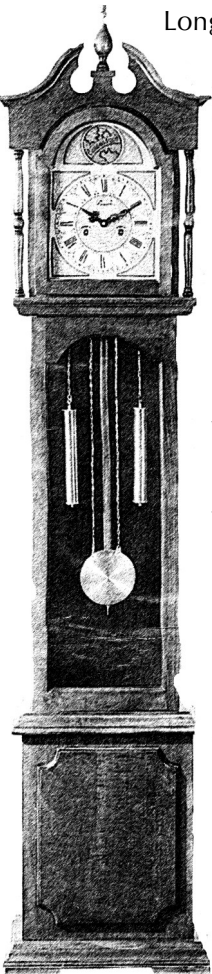
Longfellow in this poem describes so well the passing of time and season.

In my parents-in-law's house was a very ancient grandfather clock with Roman numerals and the words "Tempus Fugit" which always fascinated me and brought back happy memories of my schooldays in Switzerland when I learned latin and the poems of Virgil. What I find so rewarding now in my old age at my beloved Old Manse is that the latin I learned so many moons ago has helped me tremendously with my English studies both at home and in Cambridge as a student.

The passing of seasons has always captivated me and with the passing of another month in the year 2003, I realise how time is moving relentlessly. With the Feast of Candlemas upon us, I hope the light and sun will show their faces a little more each day. With the Winter slowly pushed away, I will no longer sit by my open fire and enjoy reading and listening to music. Soon I will venture out of doors into my beloved garden and discover the latest little miracles of nature. The winter aconites with their bright sunny flowers of gold, the snowdrops, fairy maids of February, and the sweet first primrose of the season. Oh what joy! Most people are very sensitive to light and sunshine and find Winter rather gloomy. "A sad tale is best for winter" said Shakespeare. We are all at the happiest when there is plenty of light and sunshine and people are more ready to smile. We are not immune to the coming and going of seasons, less so than the plants and animals, mainly because our countryside is gradually being eroded and changes in nature no longer noticed.

In the animal and plant world, fading or increasing in the length of days tells them to hibernate or drop their leaves and come Spring they mate and grow again.

Every year I receive calendars from all over the world and they bring back very vivid and wonderful memories of places I have lived in or visited. This time I had flowers from Tuscany and the glorious



sunshine and special light of Italy. Flowers from California and views of San Francisco where I have family and so many dear friends who wrote “please come back”. Very original paintings of Swiss farmhouses, reminding me of my days at Hauteville Agricultural College, paintings from Monet’s garden in Normandy I have so often visited and, last but not least, a very personal calendar my nephews and nieces in Switzerland create especially for me each year with photos of beautiful places in the Swiss Alps and portraits of the family. What an abundance of beauty and love.

I love calendars and I am very surprised to discover how much they are still influenced by the ancient Roman empire. Each month has a special meaning. January from the Roman god Janus who is represented as two-faced, one looking back to the year passed and the other looking into the future. February is a Roman festival of purification which, strangely enough, is also the time of Lent in the Christian festival of renunciation. Mars god of war. April is evocative of a new beginning, from the latin ‘aprire’ to open. May and June names of the goddesses Maia and Juno. July and August are very different and represent Julius Caesar and Emperor Augustus. All changes with the coming of the last four months which in the Julian calendar were the seventh – sept, octo – eight, novo – nine, and diece – ten. Very interesting. The word calendar itself comes from the latin ‘kalendae’, first day of the month. Most calendars are lunar, but in England the Gregorian calendar, adjusted by Pope Gregory XII in 1582 from the Julian created by Julius Caesar in 46BC, was adopted only in 1752. Some are very complex and varied by religious observances. The Jewish is a mixture of solar and lunar cycles. In China both the lunar and Western Gregorian calendar are in use. The Muslim one, which is lunar, is counted from the day Muhammad fled from Mecca in AD622.

I will soon be planning the colour scheme for my front garden and I really look forward to growing everything from seed, preferably those I have saved from last year. It gives me great satisfaction to follow the miraculous germination of minute seeds which will grow into showy plants of such vibrant colours. My window boxes too are a source of great pleasure.



A month is passed another is begun
And buds of rarest green begin to appear
As if impatient for a warmer sun

NEWS FROM P.O. CORNER



From the Express & Echo pre Christmas - 'We would ask people to be patient and to stagger when they go into or come out of the city centre.'

Pensions etc into bank accounts - latest news:

Some letters have been sent to recipients of Child Benefit entitled 'Changing to Direct Payment' that have no mention whatsoever of the P.O. Card Account. If you receive one of these and if you want a P.O. card account then do not fill in bank details at the front, complete and sign the back and write **BOLDLY** alongside 'P.O. Card account required'. You will receive an application form at a later date. This would apply to all pension & benefit claimants who receive this type of letter that does not mention the P.O. account.

Further info: - after you have received the letter from the DSS (or DWP as it is now) it will be necessary to make a telephone call as part of the process of opening a 'Post Office Card Account' (this is the account which keeps all your government-paid money completely separate from any other and to which you have full access at the P.O.). You may be asked during this call as to why you want the P.O. card account and not have the money paid straight into your current bank account - well - an answer used by some people to date is - 'I am miles away from a bank and I want to keep this money completely separate from my other money ' - and they seem quite happy with this. I tell you this merely to keep you up-to-date, not by way of advice.

Reminder: P.O. Card Account - only for Government-paid benefits, pensions and tax credit - no other money - full access at any P.O.

Basic Bank Account - simple banking services at almost any bank of your choice, and access to cash at P.O.

Current Account - full banking services that you probably have now if you have an account - access to cash at P.O. only if with one of P.O.s banking partners. i.e as now if you bank at Lloyds, Barclays, Coop, Alliance & Leicester, Smile and Cahoot,

I read in a survey printed in the 'Women in Business 2002' that "around one in four women (26pc) believe they have to look sexy to progress in their business careers". It's absolutely outrageous. Why don't the other three quarters make an effort?

When you read the above literary masterpiece we may be at war with Iraq, I hope not, but if we are I hope someone 'up top' has shown me some evidence as to why. If Blair insists on risking the lives of our troops then he better have a darn good reason - he has shown us no evidence to date.

Best for 2003 to all from

HO&GO@PO

ad

ad

WHIMPLE WEATHER - 2002.

		<u>2002</u>	<u>2001</u>
Rainfall	44.02 inches		33.4 inches
Rain fell on	195 days		172 days
No of days gales/strong winds	42 days		35 days
No of days 32 f or below	10 days		52 days
Snow fell on	1 day		2 days
Thunder heard on	4 days		3 days
Wettest month	November (9.14 ins)		March (5.78 ins)
Driest month	August (1.18 ins)		May (1.0 in)
Wettest day	13.10.02 (2.16 ins)		7.10.01 (0.94 ins)
Hottest day	29.7.02 (86°f)		3.7.01 (88°f)
Coldest night	10.1.02 (28°f)		22/31.12.01 (23°f)

Again, it must be emphasised that these details were recorded in a garden in Whimble, they will not agree with those on Dartmoor, Woodbury Common or possibly the Rockbears Straight but are thought to be fairly relevant to the village.

I now hold 32 years of weather statistics in Whimble. Rainfall in 2002 at 44.02 inches was the third highest annual. 2000 holds the record at 45.48 inches followed by 1974 at 45.40. November at 9.14 inches was the wettest of any month in 32 years, the previous being January, 1974 with 9.09 inches. In 2002, October (6.80 inches) November (9.14 inches) and December (5.38 inches) were the wettest 3 consecutive months in 32 years.

The average mean temperature in this garden in November and December was 4 degrees higher than anything I have on record for those months. I am led to believe that, on an annual basis, a ONE degree increase in average mean temperature would have dramatic effect on our climate. Make of this what you will.



Ken Burrows

Awarded

"BEST PUB IN
DEVON 2001"

by Westcountry Cooking



THE JACK IN THE GREEN INN

For those who
live to eat!

5 minutes from Ottery St Mary
on the old A30 towards Exeter

Rosette awarded in the
AA Best Restaurant Guide

Recommended in the
Which? Good Food Guide

See our latest menus on:
www.jackinthegreen.uk.com

Rockbeare, Near Exeter

Telephone: 01404 822240 Fax: 01404 823445

ad

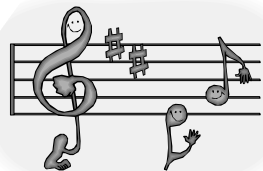
ad

Carols on Christmas Eve

As you know, I had been tuning my voice for its regular Xmas Eve mumble, for some months. I was really looking forward to a place at the rear of the crowd in The Square where I could display my mumbling to its full effect. So as we went down to The Square, I was disappointed to feel the wet stuff falling on the old solar panel and we all ended up in the church – I was really looking forward to a bit of the outdoor ‘singing’.

Nevertheless, it turned out to be the best carol gathering I think we have had, since we have lived here. I thought that I was at the back of the proceedings, then suddenly discovered that I was in the second row from the front! Scary or what? The church was packed and it was lovely to see all the support for a wonderful village tradition. It was made even more successful by the singing and direction of Orchard Harmony’s very own Julia Green who had arrived at the church for a nice quiet sing as a member of the village, and suddenly found herself in charge of the assembled throng of musicians and singers! Julia was totally unfazed by this and did a brilliantly enthusiastic job in guiding us through the carols, selecting which verses to include, and ensuring that the musicians finished at roughly the same time as the singers. I thought that it was especially lovely when Julia had the children do their own solo with one of the carols – real Xmas stuff! The musicians did an excellent job, and we had a fine selection of woodwind, string and brass instruments. If you want more details, gentle reader, ask some one who knows about music ! So well done to Barbara Lambert for organising the musicians again and thank you to those musicians.

Ed H



Big Night In!.....next event

Sweet Lorraine



Bristol based singer, guitarist and songwriter Lorraine Ayensu works in collaboration with saxophonist Norma Daykin. Sweet Lorraine are well known for their insightful music, which ranges from intimate ballads to world dance beats. Folk, jazz, African and Latin elements combine to create a cohesive and original sound.

The music is partly inspired by Lorraine's Ghanaian and English heritage. They are distinctive songs about many aspects of life, telling stories and asking questions about roots and belonging . Lorraine's strong voice is reminiscent of Joan Armatrading. With superb guitar playing that weaves rolling melodies and counter melodies into the songs and Norma's soulful jazz tinged sax and wind synthesizer playing they create colourful and sometimes dramatic soundscapes.

A chance to see a new young original songwriter at the beginning of what deserves to be a long and successful career

Saturday 8th March at 7.30pm

Whimble Victory Hall

Tickets £4.50 / £3.00 60+, MTB/ £2.50 under 16's

From Whimble Post Office

or by phone from Louise on 01404 822008

Bring your own drinks and nibbles and what about some friends too.....?

ad

ad

NEW YEARS EVE 2002

A little damp, but nevertheless, a good end to 2002 and a great start to 2003! We commenced the drinking practice in the Thirsty Farmer where the excellent blues band, Blue Swayed Blues had been booked by Mike and Ali to entertain the customers. This was the first year that Mike and Ali had tried a 'ticket only' approach in an attempt to avoid the normal New Year's Eve throng in any pub where you can't get to the bar for the assembled multitudes and even when you do get a drink, you return to your table with most of it either on the floor or down your front as you battle your way from the bar!

I thought that the 'ticket only' idea worked really well – the pub was nicely full and there was plenty of 'safe space'. The ticket money has been divided up between various village organisations, and I am delighted to say that the Whimble News was one of them, so a very big 'Thank you' to Mike and Ali for their donation.

It was great to see so many people in fancy dress – we had Harry Hill, a guerrilla, a hippie, a Mother Xmas with a fine false frontage, an entire table devoted to the theme of 'Come Dancing' (children – ask your parents!) and a superb rock star behind the bar wearing the biggest 'afro' wig I have ever seen – and who continued to wear it with pride throughout the night!

I managed to dash down to The Square for midnight and the bells, and a glass of magnificent mulled wine, prepared and served by Jan and John Discombe – thank you for that. We had a box of party poppers being given out so that we were all armed with the right things. The bell ringers did an outstanding job ringing several double minarets with a triple salko every irregular beat, and then ending with a single Alka Seltzer – not easy when you are holding onto both your drink and the bell rope! Spare a thought for the bell ringers as they probably emerged, hot and wrung out (see – play on words there!!!) to wish the assembled throng a Happy New Year and we had all gone back to our glasses of foaming whatever – so well done and thank you, bell ringers! The most amusing moment for me in The Square was the sight of a mother proudly telling the world that she was embarrassing her young daughter by giving a New Year's kiss to 'strangers'. An excellent opportunity for a parent to get their own back for all the other cringeworthy things that our children get up to as they grow up!!

Paul Mallett managed to set off some big rockets despite the fine drizzle, adding to the village celebrations at the magic hour.

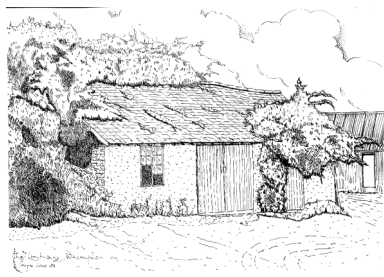
Another great night out in Whimble – and the next day it was good to see the fancy dress theme continued, with many people re-enacting the 'living dead' as they shuffled sadly around the village!

Ed H

WHIMPLE HERITAGE CENTRE

Whimple History Society celebrated another milestone on Monday 30 December 2002 when members were invited to see the progress that had been made on the conversion of the Linhay to make the village Heritage Centre. The Committee have done a superb job in organising this conversion, and now the Linhay boasts a refurbished interior, an electrical supply, and all the lighting necessary for the future exhibits, carpeting throughout and storage heaters. What a transformation! The plan to open in May 2003 looks achievable, and now the focus of energy goes into finishing the interior, as well as some of the exterior. You will see that the financial thermometer on the Linhay wall has been changed to reflect the new target of £110, 000 to cover the costs of the second phase - the extension at the back.

30 December was also an important date for the Society, as it was the second anniversary of John Shepherd's untimely death - he would have been proud to see such progress on a project that was such a huge part of his life. The Linhay was laid out so that members could appreciate how the exhibits would be displayed in their cases, and what would go where on the walls.



Some 70 members and guests attended the event, and they enjoyed a buffet, which of course, had to be washed down with a little something. That little something turned out to be some delicious mulled wine which was

made up of some 15 bottles of red wine - obviously a lot of practising had taken place over the Xmas break and it all disappeared. I am sure that the new storage heaters caused a lot of evaporation problems in the wine glasses, and there can be no comment made about the drinking ability of the Society!

It was a very pleasant couple of hours, and the Society has every reason to be proud of what has been achieved - here's to even more success in 2003!

Ed H

ad

ad

The Whimbletons Present

Robinson Crusoe

Tickets now
available from
Whimble Stores



At - The Victory Hall, Whimble
On - Thursday 27th February-6.00 pm
Friday 28th February-7.30 pm
Saturday 1st March-7.30pm

CLERK/FINANCE OFFICER FOR WHIMPLE PARISH COUNCIL

THE PARISH COUNCIL ARE LOOKING FOR A NEW
CLERK/FINANCE OFFICER.

THE APPLICANT SHOULD HAVE EXCELLENT
COMPUTER AND WORD PROCESSING SKILLS.
BOOK KEEPING EXPERIENCE IS ESSENTIAL.

FULL TRAINING WILL BE PROVIDED
FOR THE SUCCESSFUL APPLICANT

WHO MUST ALSO BE WILLING AND ABLE TO ATTEND
TRAINING COURSES (USUALLY HELD IN EXETER).

THE HOURS ARE 8 PER WEEK (ON AVERAGE)
INCLUDING AT LEAST ONE EVENING PER MONTH FOR
THE PARISH COUNCIL MEETING.

THE CLERK WILL BE WORKING FROM HOME
WITH A COMPUTER PROVIDED BY THE PARISH,
E-MAIL FACILITY, TELEPHONE AND FAX.

PLEASE SEND YOUR CURRENT CV
AND LETTER OF APPLICATION TO:

CLLR. S. RANDALL-JOHNSON,
SLEWTON HOUSE, WHIMPLE, EX5 2QL.


Ottery St Mary Medical Trust

A very big thank you to everyone who purchased dolls, cushions and Christmas Goods. Also, to the donations I received as well.

A cheque for £1135 has been given to the Trust. The money is being used to purchase a 'Cardiac Alarm'. This is a new piece of equipment which monitors a patient's heart rhythms at home over several days.

Thanks to Barbara and Joyce (Ottery St Mary) for all their help.

Myrtle Dockings



Whimple Tennis Club

The AGM for the Club will be held on
Tuesday 25th March this year.
It will be at 13 West View Close
starting at 7.30pm.
All Club members are most welcome

HOLIDAY INSURANCE THROUGH THE POST OFFICE

It is worth getting a quote -

e.g. Single Trip 14 day European holiday for 2 adults and 3 children—£46.00

Ring 0800 169 9999 (it is a free phone number) or visit www.postoffice.co.uk, to get a quote - select option 1, listen to some blurb, mention P.O. code 2225190 and get a quote which could save a lot of money compared with travel companies. Children under 18 travelling with parents covered free. There are conditions but all in all it is very good value.

GO@PO

Memories

For a six year old moving to Whimple just after the war, especially as I did not go to a local school, my world was mainly populated by adults. Next door to the Country House farm was the farm cottage where Mr. Beer, our farm worker, lived with his wife and two small children. Their garden was banked with Aquilegia, in many colours, a memory that causes me to grow them from seed wherever I live and love and enjoy them still, even here in Connecticut.

Mrs. Wannacott lived down by the crossroads, on the south side. Her cottage is there still. She not only came and looked after the house, but also could make Clotted Cream. I tasted my first with bananas, another new experience in post-war England. I can remember the magic of her simmering the milk on the Aga, then the agony of waiting for it to cool in the larder, and the moment of joy when it was ready. One time a whole pan had to be thrown away. A mouse had fallen through the cream and drowned, I was allowed to view the hole in the cream. I was dismayed, unable to understand why that should matter and why such a tragedy should be necessary. I am still of the same opinion, and still addicted to Clotted Cream.

My parents had divorced before we moved to Devon, but Nannie came with us. If my father was away she felt nervous in the house. One day Mrs. Wannacott asked why boxes were piled up against the front door every night. She was told that anyone trying to break in would cause enough noise to wake the house. Mrs. Wannacott showed her, in the dark corner behind the door, a huge hinged metal bar that could be laid across and prevent any such entry. That was it for the boxes. Nannie is still alive, a widow in her native Norfolk, and the person whose loving care carried me through the effects of a parental divorce.

The next-door farm was Northcotts, owned by Mr. and Mrs. Glanville. That kitchen was home from home for me. She had three taps, and I was so impressed that one was for soft water (that was the brass one in the middle) and was used for washing hair. She grew gooseberries, I recall helping pick them in the garden, and also eating some of the wonderful jam she made. She was the grandmother I never had and I stayed in touch with her into my thirties. She eventually went to live in Clifton with her daughter. Mr. Glanville told me of their family tombs from the Elizabethan period that are in Tavistock Church. I visited them again in 2002 and said a prayer for these two dear people.

Memories abound. Of rabbits in the fields, nut trees in the hedges, the Gail - a

of Whimble

place of mystery and dim coolness on a hot day. Of driving a tractor at the age of seven (and hitting a gatepost and bending the starting handle which made for problems), of running away (missing my brother at school, I suppose) and then coming home in the late afternoon, cold and chilled and repentant. Of the little graveyard I developed on the right side of the front door, where the wall recesses. Any wild animal found dead was buried with pomp, and, in the case of Tommy, my cat, with grief that lingered when I went back there this past summer. A teddy bear wedding in the drawing room, all the attendants in procession, the cake for tea serving as the Wedding Cake. Watch out for the games your children play! Little did my parents know or wish that I would become a priest. That I would visit Mrs. Glanville's brother in a nursing home near my Norfolk parish in the 1970s, would bury both my Uncle who lived at Feniton, and my stepmother who came as a bride to Country House.

It was not all easy. We boys were caught sharing a cigarette butt by our father. "What are you boys doing? If you want a cigarette, don't steal butts, ask me for one." I fell for that, we both were amazed, and immediately were sat down and taught how to smoke. He gave us Abdullah No11 and then showed us how to inhale. It worked. Nannie carried me away, very sick, and I do not smoke to this day. My brother was older, he struggled through the lesson, and, I am sorry to say, has been a smoker most of his life.

There it is, just the tip of the iceberg of memories that belong to Whimble. The farm house is heartbreakingly deserted, but the village is alive. Young people growing and building their own memories. May they too be happy ones. Some of this generation will move far away, may they return as I did, and be as thankful for this corner of Devonshire that is forever "childhood."

John Bliss

Whimble W.I.

Whimble WI held a very enjoyable Christmas Party in December. Members enjoyed a "bring and share" buffet, a Beetle Drive and an excellent Music Hall production. The latter was provided by a group of talented members of the drama group.

Our January talk was by George Williams the gentleman who walked the coast of mainland Britain accompanied by his dog. It was an amusing talk - we got as far as Northumbria - we look forward to his next visit when, hopefully, we will finish the walk!!! Our February meeting will be at 7.30pm on Tuesday February 11th at The Victory Hall when we will be having a talk by the Fire Service. We welcome any visitors and prospective new members at our monthly meetings.

Jan Discombe



SILENT AUCTION

at Victory Hall Whimble
on Saturday 1st March - 10.00am to 12.30pm

A wide selection of items is being auctioned, including a Hoover Vortex, Panasonic audio system, easy chairs, silver plated oval tray, oval mirror with wooden surround, framed pictures, Derby bone china dishes, and much more.

Come and inspect the items for sale and record your bids on paper. At 12.30pm, the person making the highest bid for any item becomes the buyer, pays for the goods (cash or cheque) and takes them away.

Taylor Made Driving

- Dual Controlled Audi A3
- Block Booking Discount
- Gift Vouchers Available
- Covering Exeter, East Devon and Taunton
- All Major Credit/Debit Cards Accepted



A local independent driving school
teaching local people to

DRIVE FOR LIFE

Andrew Taylor DSA ADI

Telephone: 0800 652 6669

email: andrewtmd@aol.com

Mobile: 07855 742365

www.taylormadedriving.co.uk

Whimble Victory Hall

Volunteers needed

Why? - to raise funds for the Victory Hall

When? - on Sunday 13th April 2003 between 6am and 1.30pm

Where? - at Exeter Livestock Centre Car Boot Sale

Doing What? - directing traffic, car parking etc.,

This is a great opportunity to raise a substantial sum of money to help pay for the upkeep of our village hall.

We need your help.

Please contact Pam Scanlan on 822262

Whimble and Broadclyst Young Farmers

Beetle Drive

at Whimble Victory Hall

Saturday 15th February 2003

7 for 7.30p.m. start

All ages welcome

Good prizes – Refreshments

Entry £1.50



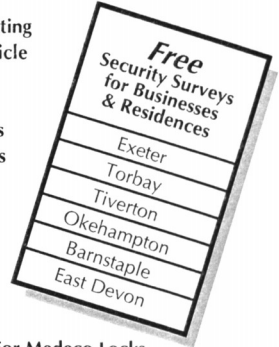
ad

ad

Complete Locksmithing Service



- 24 Hour Emergency Service
- Standard & Computerised Key Cutting
- Duplicate Keys Cut For Any Vehicle
 - Car Transponder Keys Cut
 - 24 Hour Lock Out Service
- Replacement Lock Installations
- Aluminium & Upvc Door Locks
 - Master Key Suites



MASTER LOCKSMITHS

- Free Security Assessments
- Locks Supplied & Fitted
- Safes Opened
- Burglar Alarm Installations
- CCTV Systems



Agents For Medeco Locks



01392 411887
FAX 01392 424817



A Wide Range of Security Products Available For Demonstrations At...

- 131 Sidwell St. Exeter EX4 6RY
- Unit 1, The Space Place, Alphinbrook Rd. Marsh Barton, Exeter.

www.guardian-security.sagenet.co.uk



**HUGH JAMES
FORD SIMEY**
SOLICITORS

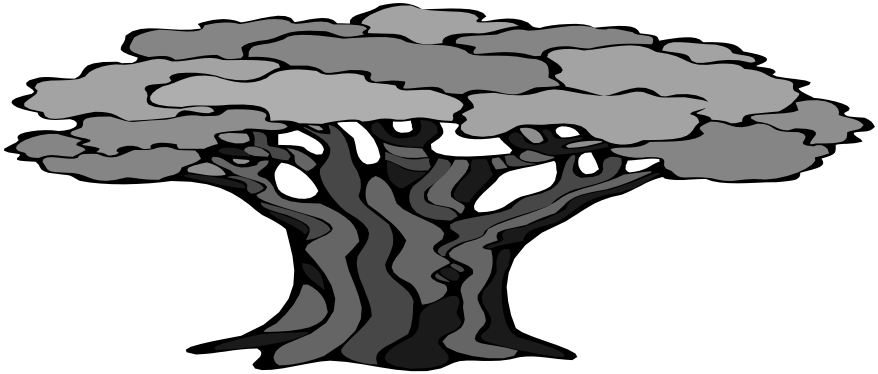
Make a Will

and we will donate half our costs to your Church or a charity of your choice.

For full details call

Tina Kelly on 01392 274126

Green Man Garden Designs



Green Man Garden Designs are pleased to offer you the following services for all your gardening and landscaping requirements.

- **SUMMERHOUSE & SHED BASES** - Quick & clean, low disturbance, professional service.
- **FENCING** - any design, any length, replaced. Supplied and erected.
- **TRELLIS & STRUCTURE WORK** - to further enhance your current garden or to create innovative focal points.
- **DECKING & PERGOLA** - a warmer more flexible alternative to patios and courtyards.
- **TREE SURGERY & AERIAL CLEARANCE.**
- **HARD LANDSCAPING** - Earth movements, topsoil imported & sculpted.
- **HEAVY LABOUR** - For all those seriously strenuous jobs.
- **PATIO SLAB & PATH STEAM CLEANING** - Say Goodbye to grime and prepare for summer.
- **SPECIAL PROJECTS** - Tree Houses, Forts, Play Areas built to individual specifications and requirements.
- **PLANTING SCHEMES** - Tailored to complement the location, taste and budget.

PLEASE CALL AND LEAVE A CONTACT NUMBER ON:

07929 849412 or 01404 47060

ad

ad

Whimble Wassail 2003

My name is Michelle Mallett and I am 12 years old. Previously I was the Wassail Princess, under the guidance of the late John Shepherd, but now I am the Wassail Queen and have been for the past 2 years. The Princess is now 11 year old Marie Batten. I was lucky to be able to attend this year because of breaking my wrist playing football the same day! As usual there was good support but I was sorry to see that The Village Beadle - Tom Perry - could not attend (see you next year, Tom!!). Col. Bob Roberts led us on our way around the village and I would like to thank Judy Smith for organising our costumes. We left the New Fountain/Heritage Centre and proceeded to wassail at four locations.

For those of you that did not attend wassailing, we made a lot of noise as we proceeded around the village. At each location we sing our Wassail song, and afterwards the Princess places toast in the tree. I then recite my speech, followed by a volley of gunfire. The Princess and I then throw cider apples at the tree. I personally had a great time and hope to see you again next year. The evening ended with refreshments supplied by Yvonne Roberts, Judy Smith and other ladies of the History Society, at The Thirsty Farmer.

More on Wassailing on page 39

Coffee Morning

22nd February 10am -12.30pm

Ferndale, Hindstreet

To help Hannah Wilkinson as she goes to
Brazil to work with street children.

WHIMPLE AND DISTRICT VILLAGE PRODUCE ASSOCIATION

Another year, and hopefully, another successful one. We hope the centre spread in the last edition was helpful in letting you all know exactly what we are and what we do. For those of you who are regular exhibitors in the Flower Arranging and Photography Classes at the Annual Flower Show you will no doubt be planning ahead now you have seen the list of the classes for this year's show.

You will have seen from the list of events for this year that on Monday 3 March we have a talk by Mrs White who judges the flower arranging. This will include tips on flower arranging as well as a demonstration. So for all you budding flower arrangers, this is an excellent opportunity to pick up some useful hints for this year's show.

Our word search obviously kept you all enthralled over christmas judging by the mountain of entries that have been pouring through my letter box! So congratulations and a nice crisp £10 note are going to R. Owen for submitting the winning entry drawn from the many entries received, (these totalled ONE in all!). For those of you who are desperate to know what the missing letters formed, well the answer is; " Fiftieth Whimple Flower Show Come Along With Your Prize Exhibits In August."

Hopefully you will all have a made a note of all our events this year but, just in case you did not, reminders will appear in each edition of the News.

Paul Wilson,
Hon. Secretary.



ad

ad

NOTES FROM YOUR ROVING (RAVING?) WASSAILING REPORTER

This year was getting a bit professional with Col. Bob dragging us from our practice beers in The Fountain to actually practice our singing in the car park before starting the Wassail proper. Will the History Society soon be selling the Christmas CD of the Whimble Wassail – watch this space! I must note my complaint about the night here, gentle reader, in that Col. Bob again wore the ex-lollipop lady's coat despite the comments that I had to make after the last Wassail. Bob – what would Trinny and Susannah say? Nevertheless, Yvonne had obviously been despatched to the stream with a couple of rocks during the year as it was sparkling white and freshly ironed. I understand that Yvonne has no plans to take in washing on a more permanent basis.

It was a lovely touch to stop outside John Shepherd's old house and perform a Wassail there, having been told by Col. Bob that Dave and Jackie (the new owners) have added the Celtic name that John used in his entertainment days, to the house title. Still a little disappointed that Dave and Jackie were unable to offer some refuelling victuals to the wassailers – I would certainly believe that Dave had a few beers somewhere in the house, despite not rising to the politely shouted order for 60 pints of lager as we passed. Next year perhaps?

I thought that Michelle did superbly, having arrived almost directly from the hospital to dress up and join the wassail – a tremendous attitude – and she kept going all the way round, so well done Michelle, and well done Marie.

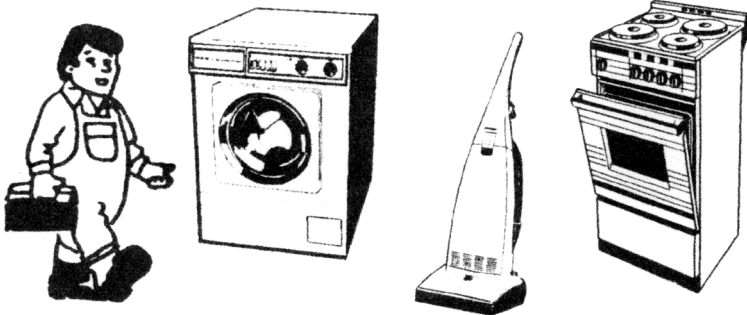
I wonder if there would ever be a vacancy for a Wassailing Dame?

Ed H

REPAIR CARE ELECTRICAL SERVICES

DOMESTIC APPLIANCE ENGINEERS

- * Fast efficient repair service *
- * D.I.Y. spares *
- * Authorised Kenwood Agent *
- * Guaranteed reconditioned appliances *



EXETER

437533

1 LADYSMITH ROAD, EXETER
40 Years Electrical Experience

ads

ads



CRIMEBEAT

WHAT IS DEVON CRIMEBEAT?

Devon Crimebeat is the High Sheriff's initiative aimed at encouraging young people to develop crime prevention initiatives and to discourage potential young offenders before they become a burden to the community.

How does Devon Crimebeat work?

Devon Crimebeat is being set up, with the aid of many of Devon's top agencies, to encourage youth projects, which combat crime, and to create a better infrastructure for early crime prevention.

Will Devon Crimebeat be Funded?

Funds will be raised with help from charitable foundations for every viable youth project and sponsorship will be sought from local businesses to support Devon Crimebeat schemes.

Who Benefits?

Everyone - the young by creating their own service to the community and others by being an important part of a practical crime prevention scheme, thus ensuring safer places to live and work in.

How Can You Help?

We are not just asking for financial help but for your invaluable assistance in making Devon Crimebeat a first in crime prevention.

INTERESTED then contact:

PC Simon Dell, Devon Crimebeat Co-ordinator

Devon and Cornwall Constabulary Headquarters Middlemoor

Exeter Devon EX2 7HQ

Tel: 01392 452708 Fax: 01392 452447 Mobile: 07811 718399

E-Mail: info@devoncrimebeat.com

Funded by Devon & Cornwall Constabulary, FORD, HSBC, McDonalds, University of Exeter, Signs Express (Exeter), Fujicolor, AON Risk Services, Westtalk Ltd, Enterprise Rent-a-Car, Fun Tech UK, Sony Centre (Exeter), BT, Ashcombe Village Club, Devon Care Trust, Fresh Start (Devon)

??????? Have all your Christmas presents been postcode marked, and their serial numbers noted? It is very important that they are, as getting them back if they are stolen is so much more likely.

It also helps to speed the process if you are making an insurance claim!

John Munslow 01404 823456



A COMPOST SCHEME FOR WHIMPLE ?

Many households produce garden waste which they are unable to deal with at home, and eventually this is taken to recycling centers. Those of you who take material to Woods Farm will know that there are often queues, and making the journey in the first place is not very sound environmentally. With help from the local authority and national composting network it might be possible to start a composting scheme in Whimple , operating with household collections during the summer months. Bags of waste would be collected once a fortnight for a small fee, taken to a nearby site, shredded, stacked in windrows, turned regularly, and finally riddled to produce a good quality garden compost which can be sold.

Our Parish Council is aware of the process and what is involved, and this article is largely to establish if the interest extends into the community. The scheme is heavily dependant on volunteers. At least four people are required for a collection and there are administrative and organisational tasks as well. This means that we would need about twenty people so that we could run a rota and share the work round. If interested could you please call me so the idea can be developed.

SOME FACTS ABOUT COMPOSTING:

- Animal and vegetable waste should not go into landfill sites.
- Deeply buried vegetable waste produces damaging methane gas in landfill.
- ***All natural organic waste should be composted and returned to topsoil.***
- Landfill tax is currently £13.00 per tonne, which may rise to £35.00 by 2005.
- Leaves grow on trees, not money.

Thanks.

Hugh Roberts 822651

Organisations in Whimble

Whimble Parish Council

Chairman: Sara Randall Johnson 822524

Clerk: Council Office - Torno 823385

Royal British Legion, Branch and Womens Section.

Chairman: Mrs. F. Pratt, Sandfords 822451

St. Mary's Church

Contact: Rev. Rob Wilkinson 822521

Devon County Councillor

Mr. R. Giles, 14 Winters Lane, OSM. EX11 1AR 813387

Whimble County Primary School

Headteacher: Mrs. D. Brice 822584

Whimble History Society

Chairman: Richard Webber 822038

Secretary: Roger Smith 822244

Whimble Mothers Union

Mrs. D. Rastall Killigarth Church Road 822486

Whimble Pre-School & Toddler Group

Chair: Liz Camp, Brook House, The Square 823392

Playleader: Jo Westney Glencroft, Church Road 822168

Whimble Womens Institute

Secretary: Mrs. Ann Bowden, Bradcott House, The Green 823450

Whimble Over Sixties Club

Mrs B. Iball 11 Rectory Close 822905

Whimble Youth Club

Chair: Mrs V. Kendrew-Welton The Old Goods Yard 823682

Whimble Recreation Trust

Knowle Cross Sports Ground. Mr P. Garraff, Luppit 891206

Whimble Village Produce Association.

Chairman: Mr. A. Bratt, Rockwell, Talaton 822437

Whimble and Broadclyst Young Farmers' Club

Mr. R. J. Burrough, Gatheshayes Farm 822257

Whimble Football Club

Chairman: Geoff Delves, 10 Elizabeth Close 823258

Whimble Tennis Club

Secretary: T. A. Lang 822512

Treasurer: J. Hughes 822659

Whimble Cricket Club

Mr. R.J.Smith 822244

Whimble Victory Hall Management Committee

Secretary: Pam Scanlan, Albecq, The Green 822262

Booking Sec: Penny Wienreb 3, The Square 823064

Whimble Post Office

Gordon & Heather Owen 822359

Whimbletons

Emma Palmer 823083

Neighbourhood Watch

John Munslow, 44, Slewton Crescent 823456

St. Mary's Bellringers

Captain: Judith Canniford, 22 Grove Road 822873

Whimble Scout Group

Group Scout Leader : Alex Spry 822844

Marquee Booking Sec : Mrs. Mary McConnell 822729



Cricket Club

Spring is nearly here and cricket is round the corner. Social events this year will open with Wine Tasting in April. Remember subs are due 1 " April.



John and Carolyn and the British Heart Foundation are most grateful for the donations of £215 -15 in memory of Mrs Betty Hughes. Thank you.



My thanks go to everyone who donated wine towards the mulled wine in the Square on New Years Eve.

John Discombe



Ruth Brown of The Square would like to thank everyone who filled a Christmas shoe box for under-privileged children.



Thank you to everyone who helped in any way making the Senior Citizens Party held on Friday December 6th 2002 such a success. 80 people sat down, everyone was happy, what a joy. Again the food and entertainment was first class.

The date of this year's party will be Friday December 5th If all goes well this will be the 40th year that we have held the party, so put the date in your diary now.

LMS

The Whimble News Team

Editor

Ed Hitchcock 823194

Production

Bob Scanlan 822262

Vivienne Leonard 822415

Anni Hindle 822025

Delivery

Ed & Nicky Hitchcock 823194

Advertising

Miles Leonard 822415

Pam Scanlan 822262

Community diary

Angela & Peter Smith 822828

Treasurer

Miles Leonard 822415

Lynda Trevena 822876



The New Fountain Inn

Whimble, Devon.

*As recommended by Camra,
the Good Pub Guide and the Good Beer Guide.*

Real Ales

Home Cooking

Lunchtime & Evening Meals 7 Days a Week

Sunday Roasts etc - Vegetarian Choices

Handmade Desserts

Children's Menu & Toddler Portions

Special Menus available for Large Parties

Lounge, Bar & Beer Garden

Join us for a Friendly Drink,

Bar Snack or A La Carte Meal

Bookings are advisable

Especially at Week-ends



*A Traditional
Olde Freehouse
Village Inn
Tel - 01404 822350*