

Whimble News



THIS EDITION PROUDLY MARKS 25 YEARS SINCE THE
'NEW' TEAM TOOK THE WHIMBLE NEWS
PRODUCTION ON - WITH THEN EDITOR , PETER SMITH!
THREE MEMBERS OF THAT TEAM ARE STILL INVOLVED AND ARE
INTERVIEWED BY SARAH INSIDE.



PLUS - WHIMBLE FEST IS BACK! JUNE 29th.
See centre pages

June/July 2024

www.whimblenews.uk



The New
FOUNTAIN INN

Olde Worlde family run Free house in the heart of Whimble.

Real Ales.

Local Ciders.

Good Food.

Open 7 days a week 11am -11pm.

Serving food from Wednesday through to Sunday.

Lunch is served from 12pm – 2:30pm Wed – Sat.

Evening meals are served from 5:30pm – 8:30pm Wed –Fri.

Evening meals are served from 6pm - 9pm on Sat.

Sunday meals are served from 12pm – 6pm.

Bookings can be made via the phone or through our website.

Tel 01404 643730 www.newfountaininn.com



A LOCAL PUB FOR ALL



Please keep an eye on our Facebook page for info on upcoming events, such as quiz nights, open mic and live music.

Editorial

Welcome to the latest edition of Whimble News! I do believe it is time to don our flip flops and shorts, fire up the BBQs and declare it- summer time! This marks my first address as editor and of course I am thrilled to bring you all the exciting news, events and updates that make our village such a special place! From community raffles to festive runs, and everything in between, there's plenty to get excited about this summer so dive in, get involved and let's continue to make Whimble the vibrant, welcoming community we all love.

Celebrating 25 Years: Interview with Long-Standing Members

Can you believe it? This year marks the 25th edition of our village magazine. Check out pages 8 -10 for an exclusive interview with three of our long-standing members. Get a glimpse of their mug shots from back in the day and you'll find a photo of the new team beaming from ear to ear! Of course, Marley the Maltipoo is centre stage!

Whimble Fest – Saturday 29th June

Mark your calendars, folks! Whimble Fest is just around the corner on Saturday 29th June from 12:00- 17:30 on the parish field. With a Wellbeing Zone, Kids Zone, and live music, it's the perfect way to get involved and socialise with your neighbours. Bring the whole family and enjoy a day of fun and festivities!

Whimble Fest Raffle: Can You donate?

Get ready to feel the community spirit with the Whimble Fest raffle! Whimble Stores is kindly planning to offer a super raffle prize by filling a basket with goodies from the shop. By purchasing and donating goods you will be supporting both Whimble Fest and your shop. So go on- donate today!

Whimble Fest Run: Lace Up Those Leg Warmers!

Feeling competitive? The Whimble Fest Run is also on Saturday 29th June. Don your leotards folks and see if you can outrun your neighbours! It's all in good fun and for the whole family, so join us for a bit of healthy competition. I know there a couple of Royal Marines in the village- is this challenge accepted fellas?!

Green Wedge Policy: Have Your Say!

On page 22, read about the Green Wedge Policy, designed to protect Whimble from merging with Cranbrook. Prevent unwanted development and preserve our village's charm by responding to the consultation listed by Todd.

Victory Hall Needs Your Help!

Such exciting plans for Whimble Victory Hall, but the costs have risen. More information will be released in the next issue, but in the meantime, can you spare anything to support our hall? Every little bit helps!

Volunteers Needed!

Concerned about the speeding in our village? Join the Community Speed Watch team! (pg 14)
The Parish Council has five vacancies! This is your chance to make a positive difference (pg 14)
Heritage Centre in Danger: Volunteers Needed! Can you volunteer some time to keep this valuable resource open? Head to page 42.

Have a great summer everyone and happy reading!



**Andy
Brooker**
Monumental Mason

Whimble based

**Traditional
Memorials**

Handcut Lettering

01297 33290

SOUTH WEST PADDOCK CARE

JONTY CORBIN
 01404 812139
 07512678976



- Topping
- Harrowing
- Rolling
- Hedge-cutting
- Spraying - weed control
- Soil sampling
- Lime spreading
- Fencing, field shelters, stables
- Fully insured and qualified

www.southwestpaddockcare.co.uk

**TRY OUR
PAYMENT PLAN**

**3, 6, 9 or 12 months
THE EASY WAY
TO PAY**

RIDGE ROOFING



AT THE TOP

Guaranteed
to beat any
genuine
produced
quote

**FOR BOTH
QUALITY
& PRICE**



& SCAFFOLDING SERVICES LTD

ALL ASPECTS OF ROOFING UNDERTAKEN - FROM LEAKY ROOFS TO RE-ROOFS

Ridge Roofing Ltd is a well-established company with over 25 years' experience behind them, working in partnership with most of the leading estate agencies.

- Slating • Tiling • Flat roofing • Fibreglass flat roofs • Chimneys/Leadwork • Turnerized slate roofs • Guttering/uPVC/fascia boards
- Storm damage/insurance work • All grant work undertaken
- Insurance backed guarantees • Full public liability insurance
- Free written quotations • All work guaranteed



T: 01404 891813 M: 07789 555685 • stephen.wattsr@gmail.com • www.ridge-roofing.com



What's On In Whimble

June 2024

Sat 8th: Front Row Club in the Victory Hall. **Note - earlier start at 7pm.**

Tue 11th: WI *Lavender bottles and pot pourri*, Sarah Pepper, 2pm in the Hub

Sat 22nd: Soup n' Sarnie Victory Hall. 12md to 1.30pm.

Sat 22nd: Whimble School Summer Fair

Sat 22nd Live music at The New Fountain - Andy Ellis

Sat 29th: Fun Run 11.30am (registration from 9.30am) and WHIMPLEFEST (12md to 5.30pm) on the Parish Field.

July 2024

Fri 5th: WI cruise, Exmouth to Topsham and back. Friends and family welcome.

Sun 7th: Tennis Club BBQ. All welcome. 11 – 2pm

Sun 7th: Tale Valley Choir. Whimble Church. 3pm

Tue 9th: WI *The Making of War Horse* by Paul Rendell 2pm in the Hub

Sat 13th: Live music at The New Fountain - Hodge Podge

Mon 15th: WARTS – orders for oil should be placed at least a week before this date

Thurs 25th, Fri 26th and Sat 27th. *Toad*, a production by Community Theatre 4 All in the garden of Rull House

August 2024

Sat 10th: Whimble & District Gardening Club's Flower and Produce Show. Victory Hall.

Tue 13th: WI members' garden party

Sat 17th Live music at The New Fountain - Sam Jones

Sun 18th: Whimble and District Gardening Club trip to RHS Rosemoor.

Mon 26th (Bank hol): Whiteway's Cup T20 tournament at Cricket Club

Sat 31st: Soup n' Sarnie in the Victory Hall. 12md to 1.30pm

September 2024

Mon 9th:- Victory Hall AGM 7pm

A minor change to this community diary – all events up to a year ahead can now be included in the diary. Although there is only space for two or three months in the paper version of Whimble News, everything will now also be posted on the Whimble News website <https://www.whimblenews.uk>. We will try to update this weekly. Hopefully this should help folks with long term planning and avoid events clashing. If you would like to have your event included, please email me on walmsley_louise@yahoo.co.uk

WHIMPLE STORES



Greetings Whimple!

We have a few updates from Whimble Stores to share with you starting with the Whimble Fest Raffle Super Raffle Prize Basket as Whimble Fest is just round the corner. The plan is to fill the basket with goods from the shop, donated by customers. The basket will then be raffled at Whimble Fest on 29th June. By purchasing and donating goods, you will be supporting both Whimble Fest and your shop. Many thanks!

Stamps

Reported recently in various news channels and on BBC's Watchdog, is a new issue of Royal Mail fining (£5) the intended recipients of letters that have had fraudulent stamps attached.

Having invested in adding barcodes to stamps and the equipment to read these barcodes, Royal Mail is now picking up "fraudulent" barcoded stamps and applying their fine – although we understand they have temporarily suspended the fine. As a reaction to this emerging fraud, Royal Mail is advising consumers to only buy stamps from them, the Post Office or reputable High Street retailers. However, it has been reported that a lot of people sending letters with these "fraudulent" stamps, purchased them from either Royal Mail or the Post Office, begging the question as to how the fraud is being perpetrated and whether the detection is throwing up false positives.

We are not sure if Whimble Stores ranks among the 'reputable High Street retailer' category, having a Square and not a High Street, but we purchase our stamps from a wholesaler who purchases Royal Mail's excess stock when special stamps (such as Christmas Stamps) cease circulation but are still valid for postage. These stamps are the only ones that we can buy wholesale without losing money on the retail sale.

We suggest that while Royal Mail are investigating the issue of potentially fraudulent stamps inside their own distribution channels – or falsely identifying fraudulent stamps, that you would be safer buying from us.

The house at 1, The Square

Whimble Stores sits inside and behind the main house occupied by Sabrina, James and Karina. Sabrina and James are purchasing their own house a distance away from the village, so we have decided to sell the house and you will see it advertised on the Hall and Scott notice board on the shop wall. Whimble Stores remains as a standalone leasehold entity and will be unaffected by the house sale.

We will be recruiting to backfill for Sabrina and Karina, so if you are 18 and over and interested in working behind the counter on a part time shift basis, please let Sharon or Rory know.

New Lines

Our wholesale suppliers are struggling to maintain some of the stock lines that we usually sell due to import difficulties, materials price increases or shipping costs and

delays. Tea has become a recent victim of the Red Sea troubles and Coffee prices are affected by recent droughts. We hunt around for alternative suppliers for our most popular items that are affected and we are pleased to get Almond Fingers back in stock as these were very popular. We are also testing out new products in the fridge such as cold sliced meats and small treat size puddings.

Unfortunately, we have had to increase the price of our take-away and sit-in coffees due to the bean price increase but we still think our prices are very reasonable at £2.50 and the service is, as ever, exceptional!

Internet failure

Sharon and I decided to take a one week short break abroad for the first time in 18 months and at the same time, contractors with a telegraph pole drilling machine, drilled through the fibre carrying underground ducts taking fibre based internet out across several providers serving a large area of East Devon. This outage affected our retail till system and the payment machines as well as the phone line. I could not even call Sabrina to walk her through a potential alternative solution, so we were disabled for 2+ days.

Well done to our staff for coping without the systems until the internet finally came back.

To ensure minimum disruption to customers, we took the names and purchase details of our customers who did not have cash available and most customers have returned to pay back this short term deferred payment. Sadly, though, we have had a couple of people who still have not returned to pay their debt.

On closing, we would like to thank all our customers for their support of the shop and repeat the request to all of Whimble to support the village store wherever possible. *Sharon, Rory, Sabrina and the team*

**The Square
Whimble
EX5 2SN**



**01404
822316**

Rory, Sharon, Sabrina and Team welcome you to our Stores and Coffee Shop for fresh Devon bread, milk, vegetables and eggs. Frozen, fresh and canned foods. Cards, stamps, Gift Cards, stationery and more.

We also provide Parcel sending and collection, bill payments, cash withdrawals, electricity and phone top-ups, gift cards and cash withdrawals.

Opening Times

| | |
|-----------------------|----------------|
| Mondays to Fridays | 08:00 to 18:00 |
| Saturdays and Sundays | 09:00 to 12:00 |
| Public Holidays | 08:00 to 12:00 |



Whimble News

Looking Back on 25 Years of The Whimble News

By Sarah Thackeray

A few years ago I answered a request just to help with Whimble News deliveries. However, at my first meeting in Bob Scanlan's garden over a glass of wine, I soon found myself volunteering to write regular articles, and step into various roles as and when necessary! Such is the camaraderie (and gentle persuasion!) of the gang that create, produce & deliver your great bi-monthly village magazine. I asked three of the original '1999ers' - Bob Scanlan (Production), Ed Hitchcock (former Editor) and Miles Leonard (Treasurer) to reminisce about their 25 years.

How did it all begin in 1999?

BOB - The original 'team' was made up of David Smith and his wife who had to pass on their magazine responsibilities when they left the village. Peter Smith took up the challenge and advertised a meeting for like minded souls. The WN sprang back to life with a whole new team and with support from the Parish Council.

MILES - Yes, and my first memory is when they organised that meeting to find new volunteers, just as we have held again recently. It was one of those moments when you meet people in the village for the first time. It was lovely for me, a great chance to get involved in something new.

ED -The committee is always evolving, with individuals taking on different roles and suggesting fresh ideas. New skills and strengths have been brought to the production as the team has changed over the years.

What are your fondest memories?

MILES - Back in the day when we used to assemble the magazine, there would be boxes and boxes of individual sheets that had been printed by the Parish Council. We'd meet at someone's house and spend about two hours walking around someone's table assembling everything!

BOB -There would always be a glass of wine involved in meetings. Someone would be nominated for a ten minute shift on stapling it all together whilst six people walked around collating. There was an agreement that every few minutes we would all stop for a drink, so as not to upset the pattern of collation and not get out of sync!!

MILES - As you can imagine, this cosy environment meant there were so many funny stories and much banter. Just as there still is today.

How has it changed since 1999?

BOB - Well I suppose initially the main change was that I altered the format and updated the production digitally. As Miles mentioned, previously it had been done much more simply. Also, to begin with it was very difficult to put pictures in. Thankfully IT is much more sophisticated now.

MILES - Bob had the foresight to begin numbering our issues from 1999, starting with that first magazine, so we can now look back on 150 publications.

How did you become 'Ed the Ed', Ed?

ED - I can remember Peter was getting ready to step down around the Summer of 2002, and I suppose that I was ready for a challenge. To me it was rather a serious publication and I thought this could be a bit more fun. Peter happened to say he thought I'd make a good editor and that he was ready to pass the role to me. So it just worked in my favour really, the timing was right.

Any particular features you remember?

MILES - 'From My Window in the Square' articles by Edith Grout are certainly memorable. She started off with one narrative then would go off on a tangent and then another, so you were never quite sure where it was going to end up. There was always a twist at the end. Was it intentional or unintentional, we never knew!

ED - Recently, I found my old picture from the Village Millennium Photo Day, which inspired us to reproduce a similar photo of the current team in the same location.

What has enabled the team to flourish over the years?

MILES - Basically, we all muck in and help each other out.

ED - Yes a bit like you Sarah, I originally only stepped in to help Nicky, my wife, with the distribution. Then I eventually took over her role, and later carried on to become editor. But the team is very relaxed and we all get on. As Miles said, we help each other out when needed.

MILES - Also, we've always had the support from all our local groups who provide the articles, updates and stories. Obviously, we need these to keep coming in as they always have done, for the magazine to continue.

How far afield does the WN travel?

BOB - Well one of the new ideas was to create our own website so that people can drop in to the WN wherever they live, which is a considerable development. We first set it up when funding was a problem and we wanted to ensure we could still publish without printing. The 25 years worth of publications are hosted by the History Society on the Whimble Heritage Centre website. So I just keep two years worth on the WN website. We do get hits from all over the world, for example Australia as well as Japan and America.

I like getting the issue through my letterbox. But do you see it going purely online?

BOB - As a village magazine, I think you need to actually give it to people not rely on them to log in to the website.

ED - I agree, we have the best of both worlds. There are some people who are happier with a paper version, and others who will browse on their devices

Continued Overleaf

Any thoughts for Sam, our new editor?

ED - Well we don't really know if people are happy with the WN. Is it useful? What do they enjoy? We don't really get any feedback. When I helped out part time in the village shop, people would always speak well of it, but it would be nice to get some up to date feedback.

BOB - I don't think I've ever heard back from any 'Let me know what you think...' questions' I've included. So that might be something for Sam to think about.

Let's raise a glass to another 25 years of our Whimble News. Do take a look back on all the editions from 1999 onwards, they are very entertaining and a lovely insight into a bit of Whimble's past.

Or visit www.whimblenews.uk for more current editions.

Sarah Thackeray



Team of
2000
Millennium
photo



Current Team

(You can see we are still short in numbers, if you fancy joining us!)



WHIMPLE CHURCH

<http://churches4all.org/>

Hello my friends,

As many of you will know, a few of us from the parish took part in the London marathon a couple of weeks ago, but I have a shocking revelation for you all, none of us actually did 26.2 miles. Actually, virtually no one does 26:2 miles when taking part in a marathon it seems. Why is this? Because it is almost impossible to run the exact distance owing to the layout of courses. At the London Marathon there is a blue line painted on the road and if you can run exactly on that, you will cover 26.2 miles, but doing so, when you are among hundreds of other runners is impossible. So, actually, most people travel further: I have the benefit of a rather brilliant Garmin watch (other brands are available!), which tracks one's runs by satellite so I know I did 26.8 miles, for example (and including the walk to the start and after the finish I covered 34.8 miles on foot).

It is often said that everyone runs their own marathon and, as far as distances are concerned, this is true.

Marathons, it seems, are a good metaphor for the Christian life.

Like everyone, the reason we are at the start line can vary. The vast majority of us have no idea what we are really in for. We will start at different points even though we are all heading for the same destination and our personal journeys will likely be different. There will be ascents and descent, tough sections and parts where we breeze along, times when we feel energised and times when we are exhausted. We will need to regularly refuel on the way and at times we are probably going to have to slow right down. At points we may even have doubts we can make it but, if we stick to it, with the encouragement of the others around, we will get through these. And most importantly, we will never be running on our own and what drives us forward is being part of something so much bigger than ourselves; and finally, no matter how tough the course may be, we know the finish line will be a time of joy and elation.

No matter where you find yourself in you own personal marathon today, please know you do not have to do it on your own.

God bless.

Rev Marc.



CARPENTER, KITCHEN FITTER JOINER

INNOVATIVE.COMPETITIVE.REPUTABLE
EXCEPTIONAL STANDARD OF COMPLETION
FLEXIBLE TO ALL CLIENTS PRECISE NEEDS

HENRY TETLEY
0786865842

EMAIL: buildwithtetley@gmail.com

SCAN QR CODE TO ACCESS MY ONLINE
PORTFOLIO OF WORK



Could a Personal Assistant make life a little easier?



The affordable alternative to home care,
where you choose who supports you

Hub Personal Assistants can help with:

- Companionship
- Domestic tasks
- Meal preparation
- Personal care
- Shopping
- Respite
- Live-care
- Assistance to appointments



Call us today for a friendly no obligation chat.

01392 982 832
www.hubcaresupport.co.uk



Your local wireless security system experts

“LESS MESS LESS FUSS!”

- Serving the South West since 1997
 - SSAIB registered installers
- Bespoke system surveys by engineers
- Installation, servicing and system upgrades
 - Only the best quality products used
 - A local, friendly service you can trust

“DON'T WAIT TILL IT'S TOO LATE!”

CALL US TODAY ON: 01392 487032
www.ellardsecurity.co.uk

Lamb Hill Garden Machinery

• Sales • Repairs



• Servicing

Andrew has over 20 years experience
in the garden machinery industry.
Previously at Otter Nurseries & more
recently at P.J.Flegg.

FOR ALL YOUR GARDEN MACHINERY NEEDS

CALL ANDREW TODAY

01404 823100/07773 579072

Moorview Industrial Estate Straightway
Head Whimble Devon. EX5 2QT

Email: lambhillgardenmachinery@hotmail.co.uk

Grandisson

FIRES, FIREPLACES,



STOVES



& DECORATIVE PLASTER

FREE ADVICE AND SURVEYS
EXPERT AND QUALIFIED FITTING BY OUR OWN FULLY SKILLED TRADESMEN
VISIT OUR LARGE SHOWROOMS

GRANDISSON, 26-28 FINNIMORE IND. EST, OTTERY ST MARY, EX11 1NR
TEL: 01404 812876

Otter Care Services



Specialist and trusted provision of domiciliary care services to support an individual in their own home in Ottery St Mary and the surrounding area.

With over 20 years' nursing experience in the community and within the care sector, Christine provides that additional support with day-to-day household tasks, personal care or any other activity that allows an individual to maintain their quality of life and independent living.

Services include:

- Companionship
- Getting up & putting to bed
- Support with medication
- Escorting to appointments
- Overnight care
- Social outings
- Shopping
- Wellbeing Support
- Personal care
- Home help
- Meal time assistance
- Family Support

Contact Christine on:
Tel: 01404 813315. Mob: 07984 150696
Email: ottercareservices@hotmail.com

Whimble Parish Council



Neighbourhood Plan update

The Council would like to publicly express its thanks and gratitude to the Protect our Whimble and Rockbeare Group (POWR) and Alan Lascelles for the massive amount of work that they have done on the Whimble Neighbourhood Plan.

The Council is now working on refining the draft Plan to move it towards being ready for consultation, including the production of a number of evidence documents that sit behind the Plan, and are required by law.

At the end of March all residents in the Parish were asked to complete a local Housing Needs Survey from Devon Communities Together, which closed on 6th May. The results of the survey will help to inform the evidence base for the Whimble Neighbourhood Plan, by providing detailed information about actual housing needs within the village – for example, the size of homes needed, whether there is a need for adapted or more accessible homes, and if more affordable or social housing is needed. This work has been funded by East Devon District Council.

As well as this, and with the support of our District Councillor, the Council has secured significant funding from the Department for Levelling Up, Housing and Communities (DLUHC) to assist with developing the evidence base of the Plan. This will cover planning assessments of specific sites' potential suitability for meeting any identified local needs for affordable, social, or adapted housing, as well as the production of a village Design Code, which will set out specific, detailed parameters for the physical development of a site or area, including street character, building type and layout, use of public space, and considerations related to the sustainability of new development.

For further updates on the Neighbourhood Plan please see the minutes of Council meetings which can be found on the website.

Community Speed Watch Initiative

In the last edition of Whimble News we asked for volunteers to come forward to be part of a Community Speed Watch Initiative. Thank you to the volunteers that have come forward. However, at the moment we do not have enough volunteers to make the scheme viable.

Volunteers need to be over 18 and willing to undertake training.

If you are interested please contact the Clerk at the email address below.

Councillor co-option

The Parish Council currently has five vacancies so if you are interested in joining the Council please get in touch.

Amy Tregellas

Whimble Parish Clerk

Website: www.whimbleparishcouncil.org

Email: whimbleparishcouncil@gmail.com

We are also contactable on Facebook

Maths & Physics Online Tutoring

GCSE & A-Level

*Personal coaching to suit your needs,
with experienced mathematician.
Member of the Tutor's Association.*

Daytime/ Evening/ Saturdays.

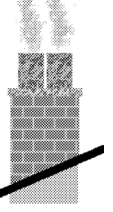
For more information please see my website:
robertpooleymaths.co.uk

Robert Pooley 01404 822333
robertpooleymaths@gmail.com

Chimneys

Wood Burners

Fires



**Swept, Installed, Repaired,
Lined and Built**

"All your chimney needs"

Alf Butler

Tel: 01404 811843

The key to your future peace of mind

Marsh Barton
01392 277467

Units 1,2 & 6 The Space Place
Alphin Brook Road
Marsh Barton
Exeter EX2 8RG



(South West) Ltd.
MASTER LOCKSMITHS
EST 1974

Sidwell Street
01392 217328

131 Sidwell Street
Exeter
EX4 6RY

email: sales@guardiansecuritysw.co.uk
www.guardiansecuritysw.co.uk



CAR KEYS



**MOBILE
LOCKSMITH
SERVICES**



SAFES



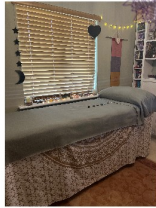
Reiki Healing

An alternative, holistic form of healing



Reiki may help you with

- Stress
- Anxiety
- Being overwhelmed
- Chakra balancing
- Pain management
- Spiritual connection
- Relaxation



1 hour session £50
30 minute session £30
Distance Reiki £30
Reiki training available



To book contact Kerry: 07791 171821
kerry@chi-quilibrium.com www.chi-quilibrium.com
40 Slewton Crescent, Whimble, EX5 2QA

Tarot Readings



Tarot Readings can give you a different perspective on life

Sometimes we feel a bit stuck, feel like we are at a crossroads, or are looking for guidance.

Whatever your question, I work with you, often creating a unique tarot spread to see what the cards reveal for you!

1 hour Tarot Reading £40
Rapid Read £15
Tarot Party (for up to 6 people) £120



Chi-quilibrium

Chi [chei] noun: the circulating life energy
Equilibrium [ek.wi'lib.rɪ.əm] noun: a state of balance

- **Water pump**
 - supplies
 - repairs
 - installation
 - fault diagnostic
- **Private water supplies**
- **Filtration**
- **General domestic plumbing**

DPPS

07738 470274

*Friendly, professional
Whimble-based service*

chris@dpps.uk

www.dpps.uk

Devon Pump & Plumbing Services

- blockages
- jetting
- CCTV surveys
- repairs
- lining
- drain tracing
- pitch fibre reforming
- pipe bursting
- septic tank/treatment plant installation
- soakaway problems
- water leak detection
- water leak repairs
- moling
- renewals
- Patio, Driveway & Decking cleaning

Tel: 01392 461670

Mobile: 07834 712345

www.drainwizard.co.uk



 gilbertstephens

Local legal & financial advice

Call our Exeter office on:

Legal Services **01392 42 42 42**

Financial Services **01392 34 64 64**

Or contact one of our other offices

Ottery St Mary 01404 81 22 28

Sidmouth 01395 51 24 43

Visit gilbertstephens.co.uk for more info

Gilbert Stephens is the trading name of Gilbert Stephens LLP which is authorised and regulated by the Solicitors Regulation Authority (no. 536070) and Gilbert Stephens Financial Services Ltd which is authorised and regulated by the Financial Conduct Authority (no 579899).

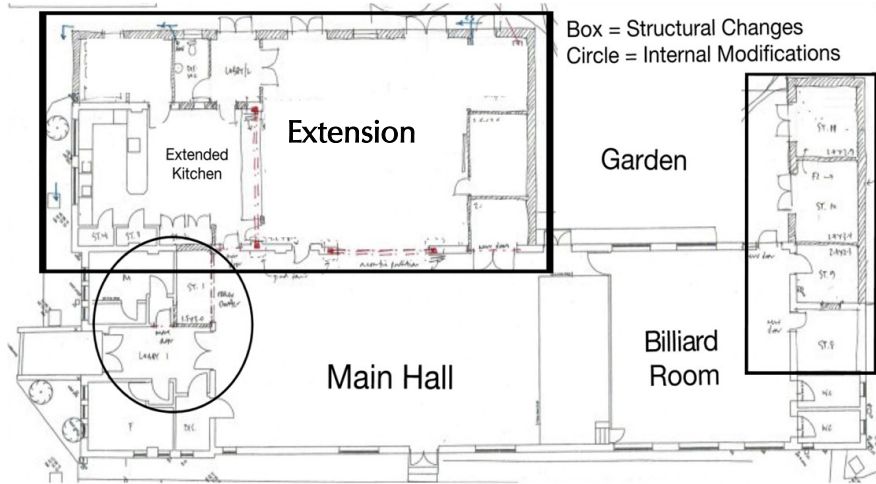




WHIMPLE VICTORY HALL

Registered Charity 291496

at the heart of the community



Before I start I must give my thanks to the amazing Victory Hall Management Trustees: Rob Davis, Chris Olive, Di Wilkins, Ali Tierney and Viv Brown – Whimple folk who volunteer their time beyond the normal call of duty. The VH is a registered charity and between us, we manage every aspect of the charity's resources from finance, compliance with governing documents, maintenance for the building and site to public bookings and much more. It is quite a task but we work well together ensuring the hall is run responsibly and with care for the benefit of the whole community, 365 days of the year.

So, to start the update: We continue to work towards realising our plans to build a daytime hiring space on the North side of the current hall. The draft plan above indicates the extent of the footprint and also shows proposed internal modifications within the main hall. We also plan to extend the Billiard Room end of the hall which is currently hired during term time by Pre-School. This will add a little extra space and more storage for Pre-School. One of the first steps was to think about build costs. We initially set a figure of around £400,000, which also included the cost of replacing the main hall roof (£52,000). However, we recently received a report from the Quantity Surveyor which sets out a costing summary for our plans and unfortunately, it is much higher than expected. So we now need to do some serious thinking. I will report back in the next edition of WN.

In the meantime, the whole community can help. If you haven't done so already, please consider signing up for the newly launched 250K Club. 25% of the subscriptions raised each month is converted to prize money, leaving 75% to go into the Extension Fund

Thank you to those who have joined. You may have noticed that our Target Thermometer was raised at Easter from £148,000 to £163,000 so we have had a good start to the year.

Our AGM on Monday 9th September is a good opportunity for a full update and to view our plans.

If you would like to contact us, Email: victoryhall.friends@outlook.com or call Sue Ayres on 01404 823082

Please help secure the future of our village hall

WVH £250k Club



Whimble Victory Hall management trustees have launched a major fundraising drive to raise the £250,000 required to fund our extension plans. The £250k club will provide the local community with a great way to support us whilst having a bit of a flutter! Here's how it will work...

1. Participants pay £6 a month. This buys you one membership number (that we will allocate), which enters you into the monthly draw.
2. The prizes will total up to 30% of the annual income and there will be at least two prizes each month. The remaining proceeds will be put towards the hall extension fund.
3. Payment will typically be by standing order. These can easily be set up if you use mobile or online banking, or by going into your bank. However, if required we will also accept cheque payments for lump sums.
4. The draws will be carried out by management trustees, generally during monthly committee meetings.
5. To register for the draw and view the full rules, scan the QR code, visit <http://tinyurl.com/whimble250kclub> or pick up a form at the hall. Please direct any questions via email to whimble250kclub@gmail.com.



Signup today and support your local community hall





DAN PLANK

Master Thatcher

T: 01404 823081



M: 07881 942516

daniel.plank@yahoo.com

djpmasterthatcher.co.uk



The Devon Celtic Band For All Occasions

See our new website: slackmagirdle.net

Find us on Facebook

for more details or to contact us:

01404 823083 empal1@icloud.com

New look, same great band!



EVERGLOW Chimney Sweeps

Whimble based and your LOCAL sweep

NO MESS, NO FUSS

APICS Member, Fully Insured

Tel: 07522 619308

Email: everglowchimneys@gmail.com



**SFA APPROVED
CHIMNEY SWEEP**



SARAH JANE'S
UNISEX HAIRDRESSERS • WHIMPLE

Open Tuesdays to Saturdays from 9am

To book an appointment ring **01404 823400** or **07494 365547**
or book through my Facebook page

New Inn Cross, Whimble EX5 2TT. Tel 01404 823 400



O'DELL PLUMBING & HEATING

jasonodell.plumbing@gmail.com

07974 818833

FOR ALL TYPES OF GAS AND OIL HEATING
INSTALLATIONS.

BOILER SERVICE, REPAIR & BREAKDOWNS.

BATHROOMS & SHOWERS.

UNVENTED HOT WATER SYSTEMS.

UNDERFLOOR HEATING.



Dear neighbours,

By the time you read this, I hope very sincerely that you are enjoying a sunny and pleasant end to Spring and start of Summer. As things are in mid-May as I write, however, my glad tidings are being dispatched slightly damp! I'm pleased to report this month on a number of major milestones. These include the appointment of a brilliant new Chief Executive at East Devon, Tracy Hendren, as well as a recently-initiated restructure of upper management in the authority, which we hope will bring even greater focus on making sure we're delivering efficient, effective services for residents.



Last edition, I mentioned an upcoming **further consultation on the emerging East Devon Local Plan**, which was expected to be published in mid-April, with a run-time of six weeks. As things have turned out, the consultation went live early in week commencing 13th May, and as such will be open until early in the last week of June. The consultation covers several topics that weren't in the previous consultation over Winter 2022/23 – the most important of these being our Green Wedge policy, which is designed to prevent settlements merging together through new development. One of these wedges lies between the West edge of Whimble and the East edge of the designated Cranbrook Expansion Areas. Officers had recommended cutting these to meet stricter rules imposed by the government; following my efforts and leadership at Strategic Planning Committee in February, this was defeated, and the current proposal is to maintain the Green Wedges as they are. However, **it's extremely important that the community makes the importance of these Green Wedges clear through this consultation** to help us defend that position against Conservative government policy. You can access the consultation – which is much smaller and more wieldy than the previous one! – at www.eastdevon.gov.uk/local-plan, or by scanning the QR code. **Please can I urge everyone to take five or ten minutes to respond.** If you can't access the consultation online, please feel free to get in touch with me or come along to one of my surgeries and I'll be very happy to help make sure your voice can be heard.

77 hours of public surgeries, eight Ward Reports, five Whimble News articles, and countless meetings, emails, and phone calls later, it's been a year now since Whimble elected me to East Devon District Council – and it's been a real privilege working on your behalf in that time. Too much has happened for me to reflect on directly here but, as part of my commitment to transparency and accountability, by the time you read this, I will have produced and published an **Annual Report** bringing together many of the highlights. This will be available on my Councillor website at toddolive.mycouncillor.org.uk/annual-report-2024/ (or scan the QR code!) as well as in hard copy at my office, and – assuming the weather improves! – I'm aiming to drop an abridged version through most (if not all!) letterboxes in the parish over the course of June and July.

Lastly, I'm delighted to share that, at this year's Annual Council in May, East Devon's Leader, Cllr Paul Arnott, has promoted me to a full member of the Council's Cabinet, with responsibility for the Strategic Planning portfolio – which includes all things related to planning and planning policy. I can't and won't promise miracles – government rules around housing numbers are very strict and there's little East Devon can do about them – but my commitment to you all is to try and bring the same transparency to those processes throughout the district as I hope I have brought to the rest of my work as your District Councillor.



That's all for this edition. As always, if you'd like to discuss any of this with me, please do come along to my regular surgeries - ongoing at The Hive, opposite the Thirsty Farmer, where I'm available 4pm-7pm on the first Monday, and 8am-12pm on the third Monday, every month, no appointment needed – or contact me at todd.olive@eastdevon.gov.uk or on 07925 847933. It'd be great to see you.



Cllr Todd Olive

Whimble & Rockbeare ward, East Devon District Council
Portfolio Holder for Strategic Planning

KILN-DRIED HARDWOOD LOGS **IDEAL FOR OPEN FIRES AND WOODBURNING STOVES**

Beech - Birch - Ash - Sycamore - Oak - etc
Free sticks with every load



For Helpful Advice and Prompt Deliveries
Telephone Exmouth (01395) 277242



**GEOFF
DELVES
ROOFING**

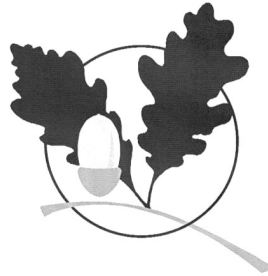
**YOUR FRIENDLY, LOCAL ROOFER,
WITH OVER 30 YEARS IN THE TRADE**

**PLEASE CALL ME IF YOU WOULD LIKE
A QUOTE FOR ANYTHING FROM
REPAIRS, FLAT ROOFING AND
TILE REPLACEMENTS, TO A FULL ROOF
INSTALLATION OR SLATE WALL**

**07939 879305
(WHIMPLE)**

Oak Building Services

Quality works at competitive rates



renovations
extensions
patios & fencing
decoration
bathrooms
kitchens
roofing
carpentry
maintenance

References for all past projects available

Contact Trevor Oakaby
at Brickyard Cottage, Whimble EX5 2PP
on 01404 822655 evenings & weekends



EASTERBROOK, EATON LTD

Chartered Accountants-Registered Auditors

**Relax!.....let us take care of all your Taxation,
Accountancy and Business affairs.**

For a *free initial consultation*, contact us at
8 Jesu Street, Ottery St. Mary, EX11 1EU

Tel: 01404 812555

Email: advice@ee-osm.co.uk

Web: www.easterbrooks.co.uk



**making
music**



**Musical Director
Emma Palmer**

10th Anniversary Concert

in aid of Exeter Leukaemia Fund

Sunday 7th July, 3pm

Whimble Church

Free admission. Refreshments available.

Retiring collection.

Billy Bloomfield Whimble Handyman

Window Cleaning, Lawn Cutting, Strimming, Hedge Cutting, Garden Clearance, Shed Erecting, Fence Erecting, Erection of Wooden Lean To, Fence Staining, Patio Laying, Patio Cleaning, Decking Cleaning, Decking Assembly, Jet Wash Driveways and Paths, Painting (Inside & Out), Gutter Cleaning, Gutter Renewal, Facias and Roof Repairs (10 Years Roofing Experience)



Home: 01404 822345
Mobile: 07759 466671

PEK BUILD

BRICKWORK&MASONRY

New build-extend-refurbishment-renovate
alteration-barns-hard landscape-repairs

Your friendly, reliable local tradesman

No job too small.

Telephone Mark on

822913 or

07817097721

Email - mproberts@live.co.uk

3 The Signals
Talatou Road
Whimble
Exeter
EX5 2QL



City and Guilds
Qualified



Stables and Grazing

for Horses and Ponies

Good private location

Whimble 1 mile. POA

Call John

01404 822232

07875 174763

A Window on Whimble's Weather – March/April 2024

Welcome to the next report of 2024 from Whimble's two weather stations. It was a disappointingly wet spring – I even heard the farmers complaining! April did dry off a bit so let's hope for a warm, sunny summer!

Slewton Crescent Weather Station: <https://bit.ly/35qwR9K>

Cobden Lane Weather Station: <https://bit.ly/3bt3FTf>

Live and historical data sets are available for each station, through the links, above.

March - The dull, windy and very wet theme from February continued right through March with almost no let-up and more than twice average monthly rainfall. And apart from a few air frosts in the first week of the month, it was generally mild. On the first day, it was wet and particularly windy with gusts to 56 km/h in the small hours as low pressure rattled in from the west. It stayed unsettled with more days of heavy rain on the 4th, 9th, 17th and 25th. However the wettest period, resulting in some flooding on saturated ground, was during 27th/28th when a deep depression covered the UK, with 33.5mm landing on Whimble. The only springlike day in the month was a dry and fairly sunny day on the 20th when the mercury climbed to a pleasant 17°C.

April – One final storm Kathleen completed a windy season for Whimble on 6-7th April, though strongest gusts over 53 km/h were in the evening of the 8th in a secondary depression that followed. In the wake of that storm, at long last, pressure rose quickly and the weather calmed down a lot. It was mostly dry for 2 weeks from the 11th to 25th, and particularly sunny and warm on the 12th and 13th before cooling off again. An unusual squall line passed through Whimble around 9am on the 15th, resulting in very gusty winds and an intense but short-lived shower. For the last few days of the month it became generally unsettled and was disappointingly cool. Although rainfall for the month was back to near average, it was a relatively cloudy month apart from a sunnier spell between the 12th and the 21st.

| 2024 | March | Date | April | Date |
|-----------------------|-------------|--------------|-------------|--------------|
| Warmest Day | 17.1 °C | 20/03/2024 | 19.4 °C | 13/04/2024 |
| Coollest Night | -2.8 °C | 03/03/2024 | -0.3 °C | 18/04/2024 |
| Windiest 24hrs | 43.6 km/h | 01/03/2024 | 41.0 km/h | 15/04/2024 |
| Highest Gust | 56.8 km/h | 01/03/2024 | 53.3 km/h | 08/04/2024 |
| Wettest 24hrs | 21.6 mm | 27/03/2024 | 7.9 mm | 02/04/2024 |
| Av. Maximum | 12.6 °C | N/A | 14.2 °C | N/A |
| Av. Minimum | 4.3 °C | N/A | 6.0 °C | N/A |
| Total Rain | 142.5 mm | N/A | 64.4 mm | N/A |
| Total Sunshine | 79.0 kWh/kW | 93.6% of Av. | 90.3 kWh/kW | 87.3% of Av. |

Note: Wind data is from Cobden Lane, while other data is from Slewton Crescent.

Phil Dominy & David Brewer. Please send any comments/questions to:

dominypr@hotmail.com

Longfield Cattery

heated single and double chalets
personal care and attention



(now also looking after small animals)



01404 822275

stephen@longfieldcattery.co.uk

www.longfieldcattery.co.uk

Longfield ~ Church Road ~ Whimple ~ Exeter ~ EX5 2TF

AERIAL SERVICES

(Mike Cummings)

- Same Day Service Available
- 7 Days A Week
- Sales, Service, Installation
- Repairs & Reception Problems
- Digital Aerial Upgrades



- NO CALL OUT CHARGE
- FREE ESTIMATES

01392 279513 07836 641635

www.aerial-services-mikecummings.co.uk

WHIMPLEFEST IS BACK! SATURDAY 29TH JUNE



WHIMPLE FEST FUN RUN

SAT 29th JUNE 2024

11.30am Parish Field

**REGISTRATION- 9.30am onwards,
ENTRY FEE – ALL ADULTS(13yrs+) £3.50**

12yrs & Under £2 (CASH/CONTACTLESS)

**AGE GROUPS – ADULTS YOUTH (13-
17yrs) 12yrs& UNDER OVER 50s**

Whimble Fest

Saturday 29th June

12-5.30 pm

Whimble Parish Field

Community
Hub

Chillout
Tent

Classic
& Vintage
Vehicles

Raffle!

Skittles

Wellbeing Zone

Reflexology

Massage Reiki Yoga

Self Defence Lifestyle & Coaching

Treatments, Classes & Talks Physio

Family Tent

Products

Kids Zone

Face painting

Tombola Kids games

Toys & sweets Free Play area

FLOTSAM THE FOOL'S

Circus tent/ workshops

MR BUBBLES

Live Music

THE GLEAVES

Blue Honey

Jenni

'Sing Out'

Community choir

JW Dance

Contact - sue.turner1@sky.com

Free
Entry!
Programmes 50p

Arts + Crafts

Cards
Gifts and Baskets
Ceramics Textiles Stitching
Paintings Jewellery Macramé
Cosmetics Sea Glass
Craft Cabin Bears
Utility Warehouse
Farmers Market

Food + Drinks

New food experiences
Locally supplied
BBQ Wide choice available
Ice cream van
Veggie/vegan options
Refreshments Marquee
for teas & cakes etc.

BAR

Free
Parking

Family
Fun Run
11.30

Radio
Controlled
Cars





**GREAT
PRIZES**

WHIMPLE FEST 2024 RAFFLE

In this copy of Whimble News you will find a book of raffle tickets for Whimble Fest 24. We would be delighted if you could sell or buy these tickets.

Counterfoils & cash (in an envelope) & unsold tickets should be returned to THE PEA (opposite the shop) by 29th JUNE 11am

You can buy more tickets as we will be selling them outside the shop on various days in JUNE & at WHIMPLE FEST



The raffle is a great way to support local groups as proceeds are given back to the community

ALSO, Help support your village by buying an item from WHIMPLE VILLAGE STORES to put in a SUPER EVERYDAY FOOD HAMPER

EVERY LITTLE HELPS

**YOU HAVE TO BE IN IT TO WIN IT!
Draw 5.15pm SATURDAY 29th JUNE**

NEW FOR THIS YEAR at WHIMPLE FEST



CIRCUS SKILLS in the Mini Big Top for ALL AGES



EXETER



SELF DEFENCE ACADEMY DEMOS



DANCE PERFORMANCE

THE CREATIVE CABIN ..space to create, explore, learn and discover!



WHIMBLE FEST SOMETHING FOR EVERYONE @WHIMBLE FEST 2024

Always FREE delivery
to Whimble
(no min. order value)



Have you tried our
NEW 'Devon Dapple'
cloudy cider yet ?



Traditional, Cloudy, Fruit and Low-Alcohol

CIDER - available in bottles,
3L pouches and 20L bag-in-boxes.

APPLE JUICE - still and sparkling

From our ancient
Whiteways Orchard in Whimble

THE EXE GIN
Grumblebee Honey Spiced Rum



Order online:
www.courtneysdrinks.co.uk
01404 890093 (Mon-Fri / 9am-5pm)

Also available at:
Jack in the Green, New Fountain Inn,
Whimble Cricket Club and Whimble Stores

'Whimble's very own drinks producer'



Scan me to order

PEST CONTROL DIVISION



KIERON 07977 648791



email: greenrockgap@gmail.com

 **ABACUS**
Stone Conservation

Masonry & Conservation Specialists

Repairs to Listed
and Historic Properties
Traditional Lime Mortar Repointing
Brick Repairs - Walling

Clyst St. George, Near Exeter

Tel: 01392 879824 Mob: 07825 698507

Email: info@abacusstoneconservation.co.uk

Web: www.abacusstoneconservation.co.uk

Window Cleaner

High reach hot water system
Frames and doors all in
Gutters/Fascias Cleaned

For that personal service

**Sean
Harris**
814963
07737 419077



Avalon

PLANNING & HERITAGE

Avalon provides advice on an array of planning and historic building issues, adding value to larger or more complex projects, providing a bespoke service to suit any requirement.

Whether you intend to construct a new building(s), expand your current site, adapt an existing structure or evaluate an investment opportunity, it makes sense to consult a professional who shares your aspirations.

11-15 Dix's Field, Exeter
01392 581150 (also in Whimble 823617)
07979 518976

murray@avalonplanning.co.uk

www.avalonplanning.co.uk

Shelley
Spry



Tale Valley Care

Unit 6 Lees Meadow
Talatun EX5 2SG
info@talevalleycare.co.uk
07873 240459

Providing Personal Care Services in your home

Other services offered include:

Washing
Ironing
Shopping
Driving to appointments
Chaperone

NVQ qualification in lead adult care
Insured and DBS checked

Apsleys

CHARTERED
ACCOUNTANTS

Accountancy
Taxation
Payroll
Probate Services
R&D Tax Credits
Corporate Finance
Company Secretarial

tiverton@apsleys.com
01884 257725

AN OPPORTUNITY TO HAVE TIME WITH FRIENDS

FRIDAY MORNINGS AT WHIMPLE CHURCH



Parents with or without children are very welcome to
drop in for breakfast on Friday mornings

9.00am - 11.00am in the
children's corner of Whimple church

No charge but donations welcome



I can't see there's much danger of me casting a clout till May is out. As I write this piece, it's the beginning of May, the rain is pouring down and I'm still wearing my vest. A silver lining to the clouds is always the prospect of our WI meetings. There you will find a warm welcome, interesting speakers and a cheery cuppa - with biscuits. There is also the opportunity to join us on a social lunch, enjoy a day trip out, take part in a fitness class or show your competitive edge in a game of skittles. Other activities are available, as they say. What's not to like?

In March we welcomed Tim Stoneman, who spoke about his involvement, as a volunteer, with the Commonwealth war graves. It was so interesting and touching to hear about the location of these graves around the world and to see how they are so lovingly and respectfully tended in far off places. Local graves were mentioned too, bringing reality closer to home. Perhaps a reminder that every life and death matters.

Our subs were also due in March. Working out at around £4 per month (the cost of a decent cup of coffee) it really is exceptional value for money. Coffee's gone in 10 minutes, yet the friendships formed in WI can be timeless and so heartwarming!

The planned redcoat speaker in April let us down, last minute. Miraculously, Rosemary Griggs was available at short notice and we were able to enjoy her performance as Bessie, which she had cancelled in February. Rosemary began her talk in character, in both dress and speech as Bessie the parlour maid. We were transported back to the reign of Henry V111 and the household of Lady Katherine Champernowne, Sir Walter Raleigh's mother. Bessie had a hard life but she had a home, food and clothing and eventually rose to be mistress of the house. It was all fascinating.

Our 14th May meeting was our annual meeting, where members were reminded of our offerings in 2023, in the form of speakers, events, trips, lunches, coffee mornings and skittles. They were asked to vote for, and welcome in, the president and committee. A bit like the local elections, but with wine, nibbles, tea and cake available as an incentive to attend!

We have a trip to Cadhay planned for 4 June to include a tour of the house and a cream tea. That's my sort of outing. Just hoping the weather will be kind. Brolly at the ready! Friends and family welcome.

On 11 June we welcome the return of Sarah Pepper and this time her talk is around lavender bottles and potpourri. Whatever Sarah speaks about it's always so entertaining and interesting. All I have to do is keep 'him indoors' from attacking my lavender. He says it looks untidy!

29th June will see your WI in attendance at WhimbleFest. Together with several church ladies we will be running the refreshment tent. All your favourite home made cakes and a refreshing cuppa will be on sale. Please come along and support.

5th July it'll be anchors away as Whimble WI takes to the water in Exmouth for a cruise to Topsham and return, with the option of a scrumptious cream tea. Another outing for the brolly. Friends and family are invited along.

9th July will be a pure delight. Paul Rendell returns to talk this time about the making of War Horse. Many years ago, my birthday treat was to see War Horse in a London theatre. I didn't know what to expect, nor did my three grown up children, we had been recommended to it. The magic was spellbinding and mesmerising and so Paul's talk will for me, bring back some wonderful memories.

Hurray!! The sun has made an appearance so I will cease my ramblings until next time. I'm off into the garden to check on my lavender.

If I have inspired you to ask more about your village WI then please contact Marilyn on 01404 821860 who will be delighted to tell you more.

Di Eden



front Row Club

WHIMPLE

Our film nights allow you to see the best of current releases, along with some classic favourites, in friendly surroundings, soft chairs and free of all the hassle of travelling to surrounding cinemas. People come from far and wide, so it's not a closed shop! The showings are generally on Saturdays, once a month, in Whimble Victory Hall.

How the Front Row Club Operates:

- Doors open at 7pm for 7.30pm.
- The show starts with a short B movie
- There is always a strategically-timed interval for ice creams, tea, coffee, and nibbles
- BYO alcohol and glasses
- Full season membership (September – June) is £20.00
- Temporary memberships for visitors are available on the door for £4.50 per month - everyone is welcome

Dates for 2024/5 Film Season

Saturday 14th September
Saturday 12th October
Saturday 9th November
Saturday 14th December

Last date of 2023/4 season

Saturday 8th June (earlier start at 7pm)



View our latest newsletter to see what's showing:

<https://tinyurl.com/WhimbleFRC>

WE KNOW WHO WANTS
TO LIVE IN YOUR PROPERTY



ASK FOR A FREE VALUATION

FOR FRIENDLY AND PROFESSIONAL
ADVICE CALL US ON 01404 814306

www.redfernsproperty.co.uk



Zoopa.co.uk

Lee Maddicks

David Drew

WARTS

DATES FOR YOUR DIARY:

Monday 15th July 2024

Monday 14th October 2024

We would kindly remind you:

ALL ORDERS FOR OIL SHOULD BE PLACED AT LEAST
ONE WEEK BEFORE THE ABOVE ORDER DATES!



(Minimum order: 500 litres. Please allow a further 10 days for delivery)

All existing (and potential new) members with access to e-mail may contact Graham Batten with their order/*registration at gkbatten@btinternet.com.

If you are without email you may call 01404 823317

*Registration to include: Name/Address/Postcode & Telephone Number

Ley's Aerials

Tel: 01404 821611

Mobile: 07866 464411

E-mail: leysaerials@gmail.com

Chris Ley

Nuttaberry, Church Road

Whimple

EX5 2TA



- Aerial & Satellite Dish Installations & Repairs
- Freeview & Freesat Reception Solutions



Book Online at: www.leysaerials.com

WHIMPLE HERITAGE CENTRE



Many of you will have visited the Heritage Centre at one time or another to look around the museum, or perhaps to research the history of your house or family, or to find information to assist with a planning application.

We exist to educate the public about the history of Whimple and, to that end, our members have accumulated vast quantities of documents, photographs and objects relating to the village. These can be viewed through our displays or, if they are not on display at the time, by appointment with our archivist. We host regular school and scout group visits, and we know that they regard the Heritage Centre as an invaluable resource.

You will have read a lot in the Whimple News recently about how the Parish Council, the Church, and even the Whimple News itself are fighting for survival against a background of a lack of volunteers, increasing costs and dwindling income. Happily, in the case of the Whimple News at least, the crisis has been averted.

The Heritage Centre is not immune from these pressures, and although we are not facing imminent closure, it could come to that eventually if we do not get more support. It would be a tragedy if all the effort which has gone into building up the Heritage Centre were to be lost.

So, what can you do to help? Well, we are desperately short of volunteers to man the Centre during opening hours (1st April – 30th September, Wed 1pm-3pm, Sat and BH Mon 10.30am-4pm split into two shifts). This is not onerous and full training is given to new recruits. The role involves being responsible for opening and closing the Heritage Centre and greeting visitors. No historical knowledge is required .

If visitors have questions which you cannot answer, then you can take the details and pass them on to me or Gill Smith, our archivist.

There is no obligation to volunteer regularly – some of our volunteers do one or two shifts per year, while others volunteer every other week. You can do as much or as little as you like. Sadly, owing to a shortage of volunteers, we were forced to close on a couple of occasions last year when we should have been open.

We are also looking for someone to join our management committee as History Society secretary. This is a key role, as the secretary is responsible for taking the minutes, writing the members' newsletter, and dealing with correspondence.

Please contact us if you are able to help - we would love to hear from you!

Tina Kelly

Curator

www.whimble.org

info@whimble.org

BARRY SEAFORTH DECORATING SERVICES

Est 1979



PAINTING WALLPAPERING

SPECIALIST FINISHES MURALS TILING

COVING CARPENTRY ALTERATIONS

REFERENCES AVAILABLE

Call Barry on 01297 22434

or 07712 120635



Hilary Ceremonies

01404822581

hilarynowill@btinternet.com

www.hilaryceremonies.com


Life celebrated with joy, creativity, passion and compassion
Funerals, wedding ceremonies and naming days


the mindful gardener

*What business do I have
in the woods if I am thinking of
something out of the woods?*


Thoreau

 Mindful maintenance of the garden you have created

 Mindful planting schemes: transforming your desire into a design that works for its purpose

 Mindful of your current wishes for your garden

 Mindful of the environment

 Mindful attention to special plants

 Mindful of biodiversity

....giving you peace of mind

For more information contact Elaine Nicholas 07917386254 elaine@danublu.org.uk

LOVELY VENUE
with
PARKING
&
UNDERFLOOR
HEATING

YOGA

WITH SARAH



TUES 6.30 - 7.40pm (evening unwind)

THURS 9.30 & 10.45am (morning flow)

at

**THE HUB, WILLOW VIEW PARK,
STRAIGHTWAY HEAD, WHIMPLE**

Suitable for all levels

£9/class or 6@£48

Contact reviveguernsey@gmail.com

07591 599162



Rochelles' Curtains, Blinds and Foam

Phil-kendall@hotmail.co.uk

07525 618286 (Phil)

We come to you
for measuring, quoting and fitting

Made to measure Curtains and Blinds

Wide selection of fabrics

Tracks and poles

Fitting service

Free measuring service

In-house making service

We also make with your own fabric

We make covers for foam cushions

FOAM cut to size for upholstery/caravans/boats etc.

Revive old furniture

Upholstery foam/Closed cell foam/Memory foam toppers

Polystyrene bead for bean bags

Gas & Oil boiler repairs
Safety certificates
Servicing
Installations



FlameFix™

A local company providing
a personal service

Call Jules

07883 037667

Visit us at www.flamefix.co.uk
and read why customers say
we're highly recommended

Oftec registered
Gas safe registered



FIRE SECURITY

UK LIMITED

Fire detection and alarm systems

**INSTALLATION, COMMISSIONING
& SERVICING**

Maintaining all types of fire alarm systems

- Domestic, commercial & industrial
- 18 years of experience
- Emergency repairs and fault finding
- Fire certificates
- Design and supply complete systems
- Schools, lets, small/large properties

Contact Chris for a free quote

07875 841288

info@firesecurityuk.co.uk

www.firesecurityuk.co.uk



Your Mortgage Specialists

Experts Since 2007

We can help you with...



5* Reviews | Google & Facebook

☎ 01404 813050

✉ info@exemortgages.co.uk

🌐 www.exemortgages.co.uk

The Milking Parlour, Clapperentale Farm, EscotPark, Ottery St. Mary, Devon EX11 1LU

Your property may be repossessed if you do not keep up payments on a mortgage or loan secured against it. Exe Mortgages Ltd. is authorised and regulated by the Financial Conduct Authority (FCA). We are registered under the Consumer Credit Act & Data Protection Act and hold the appropriate licences. Exe Mortgages is entered on the Financial Services Register under reference 705540.



Trusted Tech

Reliable IT Support Services

Slow computer?

Unreliable internet connection?

Looking for friendly, one-to-one computer tuition?

Trusted Tech can help!

Contact us today!

07989 708629

william.grimsley@trusted-tech.co.uk

www.trusted-tech.co.uk



S.W Podmore

Podmore building services

25+ years experience

Local and reliable

Most aspects of building work undertaken

Small plumbing jobs

Call for a free quote or advice

Shane 07943211869

shane.podmore@gmail.com

Looking after your trees and
gardens for over 25 years

Sid Valley Tree Surgery & Landscapes

TREE SURGERY
HEDGE CUTTING
STUMP GRINDING
GARDEN CLEARANCE
FULL LANDSCAPE SERVICE
FREE QUOTATIONS



Tel: **01395 519856**
Mobile: **07880 797613**
www.sidvalleytreesurgery.co.uk



James Brewer Quality Made Joinery

Ellicombe House
Cutteridge Lane
Whitestone, Exeter EX4 2HE
Tel: 07896 530640
Fax: 01392 811604



Email: jbrewer2410@hotmail.co.uk

(not VAT registered)

*Please contact me for all
your carpentry and joinery
needs, i.e. doors, windows
and furniture, I will be
pleased to give you a
quotation.*

darren peek plastering contractor

plastering and rendering,
dry-lining, coving,
cob and lime specialist,

mobile 07786514172
tel 01404 41211
darrenpeek2@aol.com



Whimble Cricket Club

The 2024 season stuttered to a start with the early season weather not doing us any favours. However, our 1st XI look strong and comfortably won the first two games of the season. Fraser Campbell, our New Zealand overseas player, is settled in and started his season with 140 not out away at North Devon. Junior cricket also started well with early season wins for our young teams at Under 11 and Under 13 ages.

We're into the busy summer period now, so a reminder that the club is open to all. Regular opening times are as follows:

Friday evenings from 6pm:

Open for junior training. Bar and BBQ

Saturday afternoons from 2pm:

Open for league cricket, Bar and Oggy Oggy pasties and sausage rolls

Sunday afternoons from 2pm:

Open for friendly cricket (check online for dates), Bar and Oggy Oggy pasties and sausage rolls

As well as the calendar of adult and junior cricket we have some other dates coming up to look forward to, including some county age level games:

- 11th June: Devon over 60s v Somerset
- 4th July: Devon U18 girls v Berkshire
- 10th July Devon over 50s v TBC
- 15th July: Devon U18 girls v Gloucestershire
- 17th July: Devon U18 Girls v Berkshire

26th August: Whiteways Cup T20 tournament

We hope to see you up at the club through the summer.

James Woollam

1st ANNIVERSARY MESSAGE FROM KEVIN, LEE AND KAYA AT THE NEW FOUNTAIN



We loved Celebrating Our First Anniversary in April!

Thank you to our amazing community for being with us on this journey.

Your encouragement, kindness, and camaraderie mean the world to us.

The Year has been a very exciting one and we appreciate all the support and kind words we received in the weeks surrounding our celebrations.

Here's to many more years together! #CommunityLove



'Dig For Victory' is now underway with green spade signs appearing around the village. If you have any excess home produce that you would like to sell in order to raise funds for the extension on the Victory Hall, please let me know. We are also considering the occasional 'pop up' stall to offer flowers, eggs, vegetable, jams, marmalade etc. so keep your eyes peeled. Information will be posted on Facebook 'Whimple Whats On', however we do appreciate that not everyone has access to social media, and will do our best to spread the word.

Gill Wilson 07725 594867



At the beginning of May, BBC Question Time was broadcast from Northstowe, a new town north of Cambridge. One of the questions was, *"should developers be forced to ensure provision of infrastructure much earlier in the planning process?"*

The new town of Northstowe will be the UK's biggest since the development of Milton Keynes in the 1960s, but seven years after the first residents moved in, it still does not have a single shop, café, leisure facility or GP surgery. There is a picture on the web of a broken billboard promising 'New Homes, New Community'. As one resident put it, *"They delivered on the first part - there are new homes."* In theory, Northstowe will eventually see 10,000 new homes, housing around 26,000 people.

The Question Time audience were as one - yes, developers should ensure infrastructure is in place. Does this all sound very familiar? The Town and Country Planning Association in 2022 stated, after a site visit, that, for Cranbrook, a big issue was that a town centre was promised by developers and advertised as 'Coming Soon' when the first houses were being sold. However, due to disputes over viability, land ownership and land use, it was still a vacant site at that time. The council has since stepped in and bought some of the land. As a result, there are shops being built, but none are yet open. As of the 10th May 2024, the proposed Morrison's Supermarket opening date remains 'up in the air' and the company has revealed that the store is under review. The first resident moved into Cranbrook in August 2012. It all implies that developers get away with their responsibilities to ensure infrastructure is in place.

On the 26th April, East Devon District Council passed plans to expand the town with the creation of more than 1,400 homes, two schools, a neighbourhood centre, green space, a place of worship and a cemetery. In addition, 10 permanent pitches for travellers have also been approved. The Cranbrook Plan was adopted in October 2022 and sets out how it will accommodate a population of about 20,000 people. This was after the Government Planning Inspector gave the go-ahead, which was opposed by many local residents along with the POW+R Group, in written representation, and at the public hearing, as it encroached significantly on land within the Parish of Whimble. This included our vigorous opposition to all development east of Cobden Lane. It now looks like 500 homes will be built on the western edge of the Parish of Whimble.

Another key issue is that this new Cobden development is to be built by Persimmon Homes, which have not had a particularly good reputation, for design, layout and build quality.

In the home builders league they are in the cheap end of the market.

Three other planning applications for Cranbrook's expansion look set to see a further 2,085 homes built in the town, along with another primary school, sports pitches, open space, play areas, allotments and another neighbourhood centre.

The POW+R Group will continue to work on protecting Whimble, as best as we can, now we are no longer involved with the Neighbourhood Plan - as we have done so for the last two and a half years.

The last point is to advise villagers that one of our founder members, Peter Boekman, very sadly passed away recently. He was a key player with expertise on buildings and business and a very affable and knowledgeable team member. He will be greatly missed by many that knew him in our village and beyond.

Alan Lascelles
2024
Press and Publicity Officer

Date 14th May

AN INTERESTING QUOTE...

We are so lucky to have lots of small local businesses in and around Whimble, and many support this little publication by advertising with us.

I saw this quote recently and thought it was really great. From 2005, but still applies. (Slightly edited for a family audience!)

Sal

I tell my wife I am going out to buy an envelope. "Oh", she says, "well, you're not a poor man. You know, why don't you go online and buy a hundred envelopes and put them in the closet?" And so I pretend not to hear her. And go out to get an envelope because I'm going to have a hell of a good time in the process of buying one envelope. I meet a lot of people. And a fire engine goes by. And I give them the thumbs up. And I ask a woman what kind of dog that is. And, and I don't know. The moral of the story is, we're here on Earth to f*rt around. And, of course, the computers will do us out of that. And, what the computer people don't realize, or they don't care, is we're dancing animals. You know, we love to move around. And, we're not supposed to dance at all anymore.

Kurt Vonnegut 2005 - from his book *A Man Without A Country*



Your Personal Assistants

A niche group of personal assistants set up to provide top quality care and support.

Mobile: Poppy - 07786392480

Email: saskialayburn@poppycare.org



Care, Compassion and Commitment

Dedicated farm and companion animal vets and nurses,
caring for your livestock and pets
24 hours a day



Cullompton
01884 35558
Tiverton
01884 258585
Honiton
01404 44095
Uffculme
01884 841317



www.valeveterinarygroup.co.uk



**PLANET SAL FOR
GIFTS AND CARDS**
WHICH ARE A BIT 'UNUSUAL'
(Like the owner..)
3, BLACK LION COURT,
HONITON EX14 1ES
01404 45777
OPEN MON 11- 3
TUES-SAT 10- 4.30
www.planetsal.co.uk
info@planetsal.co.uk



Covering Exeter and
surrounding areas.



☎ 07496 961 255

f D E Window Cleaning Services

"FREE GUTTER CLEAR"

IF YOU SIGN UP TO A REGULAR WINDOW CLEAN

LIMITED TIME ONLY DEAL

CALL US TODAY
07496 861 255

PROFESSIONAL, RELIABLE & FULLY INSURED



Terms & Condition Apply:

Free gutter clean on your 7th window clean

If you are not 100% satisfied with any of our services,
simply notify us within 24 hours and we will return & re-do
any unsatisfactory work- It's our promise to you!



RJ Spellman

Renovation & Property Maintenance

.....

Carpentry & Joinery

Kitchen Fitting & Remodelling

Wardrobes & Fitted Furniture

Window & Door Fitting

Plastering & Painting

Fully Insured

.....

For a free quotation or advice please get in touch

e: rjspellmanrenovation@gmail.com

w: rjspellmanrenovation.co.uk

t: 07511 533 765



PF&A

PREMIER FENCING & ASTRO

**QUALITY FENCING & ARTIFICIAL GRASS
AT PRICES YOU CAN AFFORD**

EXETER • **01392 341 315**

EAST DEVON • **01395 205 563**

info@premierfencingandastro.co.uk

www.premierfencingandastro.co.uk

FENCING ■ DECKING ■ GATES
ARTIFICIAL GRASS ■ LANDSCAPING

At the time of writing, we were busy preparing for our annual plant sale which was on Saturday 18th May. This year has again been very challenging for those of us growing the plants with such a mix of weather, not least the cold wet days in March and April when we like to try and get a lot of plants started. Although some of the plants were not quite as well advanced as we would have hoped this year, we still had a fairly good selection for everyone. Without the benefit of heated greenhouses, we had to hope that the elements would be kind to us and, eventually they were, at the start of May. As in previous years, all proceeds from the sale go to the running of our annual Flower and Craft Show in August. Also, we take any surplus plants to the Ottery St. Mary Plant Sale where the proceeds go to Hospice.

This brings us to the annual Flower and Craft Show, which this year is on Saturday 10th August 2024. The Show Schedules have now been printed and copies, together with entry forms, can be obtained from the Whimble Stores and many thanks to Rory and his team for facilitating this. We have made a number of what we hope are improvements to the schedule this year and we hope this will help to increase the number of exhibitors and entries. We are very much looking forward to seeing the usual wonderful, skilful and creative exhibits!

Thanks to Doreen and Brian, we are looking to run one coach trip this summer.

This will be a trip to the ever popular RHS Rosemoor on Sunday 18th August. More details as and when they are available.

Following this trip, we are planning to have a talk by Mick Street in September. Mick is still a member of the Club, was a former Chairman and is a very good and knowledgeable speaker. More details as an

d when they are available. We will also be having our highly entertaining Quiz Night in November, so look out for those details in future editions of the Whimble News.

Paul Wilson,

Chairman, Whimble & District GC

Devon's countryside is under threat

Now more than ever



You can help protect it.
Join us today.

DEVON **CPRE**

The Voice for Devon's Countryside

01392 966737
devoncpres.org.uk

A charitable incorporated organisation with registered charity number 1175228
A member of the National CPRE network

SHORT MAT BOWLS



We play Short Mat Bowls every Wednesday at 7.00 pm. We are looking for new members to join us please. Come along to the Victory Hall. You will be very welcome. Bowls can be provided.

David Rastall.



Build Consultants

PLANNING & PROPERTY EXPERTS

01404 821999

RANDALL@BUILDCONSULTANTS.CO.UK

Building Design & Planning Permission

Call or email us today for a free consultation -
or why not pop in and see us at The Hive,
opposite the Thirsty Farmer

YOUR VISION, OUR EXPERIENCE



Experts in nature

Whimpe-based tree surgeon

Dendrologic
Arboricultural solutions

Arboriculture

Tree pruning + removal

Hazardous trees

Tree health

Planting and establishment

Ecology

Habitat management

Advice

Survey

Contact Dylan on: 07828 013 486
dendrologictrees@protonmail.com



WHIMPLE TENNIS CLUB

Your own private court near the centre of the village

- Low-cost membership
- Members only
- A well-maintained tarmacadam court
- Regular social sessions
- On court booking system
- Coaching available
- We will be having an open evening with barbecue in May for the start of the season - date to be confirmed
- Another open day at the weekend during Wimbledon fortnight with a barbecue will occur - date to be confirmed

Contact Viv Brown on 07876653264 or email whimpletennis@gmail.com for more details



WHIMPLE TENNIS UPDATE



It's that exciting time of year again when the clocks have changed and the Whimble Tennis Club seasonal annual membership is available.

So whether you're a junior, student or family renewing your existing membership or joining the club for the first time, we look forward to seeing you.

We have arranged a couple of events where everyone is welcome to visit the club, bring your racket and have a game.

Our next one is on Sunday 7 July between 11am -2pm, when we will have a BBQ.

We will also be holding an event for all members of the club who wish to participate on Sunday 15 September 2024 - a social tournament event between 10am - 4pm.

The low cost annual membership for 2024/2025 season will be £20 for juniors / students, £42 for adults and finally £85 per family. This gives members access to the on court booking system, regular social sessions if you want to join in on a Thursday evening from 6pm or Sunday morning from 8.30am. Pass your details onto Viv via the email below to be added to the WhatsApp group.

We are able to keep the low cost annual membership by the club committee and members assisting in the maintenance once a month. During BST (British Summer Time) this will be held on the first Wednesday evening of each month between 6-8pm, and will run until the 4 September 2024. After completing, we visit the pub for a social drink.

Contact Viv Brown on 07876 653264, or email whimpletennis@gmail.com for more details.



Whimple Primary School

The summer term is always one that has lots going on. It is the term of formal assessments set by the Department of Education - Year 6 SATs have just been completed with phonics screening and times tables checks after half-term. Our pupils and our staff work very hard to ensure the children can achieve the best they can without applying too much pressure, and ensuring learning continues to have a fun element to it.

With the assistance of a number of volunteers coming to help, we have a number of clubs and activities up and running again; these include craft club, choir, netball club, gardening and reading. We really do appreciate the help of these people in order to facilitate some broader activities for our children to enjoy.

Two of our Year 6 children also took part in an Exe Valley Federation team to complete the Exmoor Challenge - Bea and Emily navigated themselves on a 16 mile walk around Dulverton and we are proud of their achievement, a first for Whimple!

School Fair Date

Finally, the school is holding its Summer Fair run by our PTA on Saturday 22nd June - please come along and support us if you can. There will be a variety of games and stalls for everyone. Hope to see you there.

School Trip

The term started with all of our Year 3 and 4 children attending a one night residential in Okehampton. As well as participating in a long hike on one day they also got to take part in a variety of other activities including axe throwing, grass sledging, archery, climbing and crossing an assault course. Thanks goes to the staff who also attended in order for this to happen. Everyone had a great time and were sent back home to their families for a good sleep!



Elm Class had a wonderful day at Drake's Farm last month. The children showed great resilience and all enjoyed meeting and feeding the animals, planting seeds and making wormeries despite the wind and rain! Under-cover activities included building sandcastles in the giant sand pit and a variety of craft and messy play activities linked to their farm topic.



Each class across the school has enjoyed an outdoor learning day over at our orchard site. Activities have included teamwork challenges, den building and making oaty pancakes on the campfire.





Throughout this school, Miss Sharratt has organised our school eco committee and they have been busy raising awareness and setting activities for the rest of the school to participate in. The whole school have contributed to our School Eco Code. We continue to collect batteries for the 'Recycle to Read' campaign.

We've collected 32kg of batteries to date, resulting in an amazing £30 worth of books for our class libraries. Thank you for all your battery donations so far for this campaign!

If you have any old batteries you would like to contribute, there is a box in our school reception area.

Mrs Carole Shilston
Headteacher



Organisations in Whimble

| | |
|--|---------------------------|
| Devon County Councillor (iain.chubb@devon.gov.uk) | |
| Iain Chubb | 07932 459595, 01297 35468 |
| East Devon District Councillor: | |
| Todd Olive (toddolive@eastdevon.gov.uk) | 07925 847933 |
| Parish Council (whimbleparishcouncil@gmail.com) | |
| <i>Chairman:</i> Alan McArthur (cllramawpc@gmail.com) | 01404 823079 |
| <i>Clerk tbc Parish Council:</i> Amy Tregellas | |
| Primary School (admin@whimble-primary.devon.sch.uk) | |
| <i>Headteacher:</i> Carole Shilston | 822584 |
| <i>Chair of Governors:</i> Jackie Enright | |
| Whimble School PTA (Whimble.pta@gmail.com) | |
| St. Mary's Church | |
| <i>Parish Priest:</i> Rev. Marc Kerslake | 822525 |
| <i>Impact Cell:</i> Helen Bowker | 823193 |
| <i>Bellringers:</i> Marianne Randall | 07834 809270 |
| Book Group | |
| Tanya Mooney | 823326 |
| Cricket Club (jameswoollam@gmail.com) | |
| <i>Booking Secretary:</i> James Woollam | 07989 234372 |
| Football Club | |
| <i>Chairman:</i> Victoria Kendrew | 07966 550260 |
| <i>Secretary:</i> Lee Wheaton | 077341 52120 |
| Front Row Club | |
| <i>email:</i> frontrowclub@gmail.com | |
| History Society | |
| <i>Chairman:</i> David Rastall | 822486 |
| <i>Secretary:</i> | |
| Over Sixties Club | |
| <i>Chairman:</i> Arthur Iball | 822905 |
| <i>Secretary:</i> Beryl Iball | 822905 |
| Pre-School & Toddler Group (www.whimblepreschool.com) | |
| <i>Chair:</i> Joe Pearce | 823512 |
| <i>Information:</i> Jo Sibley 07794 652549 or admin@whimblepreschool.com | |
| Recreation Trust | |
| <i>Knowle Cross Sports Ground:</i> Roger Smith | 822244 |
| Scout Group | |
| <i>Group Scout Leader (and Marquee Booking):</i> Alex Spry | 822844 |
| Table Tennis Club | |
| Chris Beer | 07787 544192 |
| Tennis Club | |
| <i>Secretary:</i> Viv Brown | 07876 653264 |
| <i>Treasurer:</i> Glenn Starkey | 07967 698600 |
| Victory Hall | |
| <i>Chair:</i> Sue Ayres | 823082 |
| <i>Secretary:</i> Di Wilkins | 758459 |
| <i>Booking Sec:</i> Ali Tierney | 07778 681280 |
| Whimble Fest | |
| <i>Contact:</i> Sue Turner | sue.turner1@sky.com |
| Whimble and District Gardening Club | |
| <i>Chairman:</i> Paul Wilson | 822744 |
| Whimbletons | |
| Cathy Bartlett-Horwood | 823944 |
| Womens Institute | |
| <i>President:</i> Sarah Hogg | 822886 |
| Whimble and Broadclyst Young Farmers: | |
| <i>Chair:</i> Hannah Gray | 07841 913776 |
| <i>Secretary:</i> Ceci Brayley | 07494 751675 |

The Whimble News Team

WN150

Editor

Samantha Upton 07375 994204
samanthaupton02@gmail.com

Production

Bob Scanlan 07845 325532
bob@bobscanlan.co.uk

Sally Wilde

sally.wilde@btinternet.com

Sarah Thackeray

sarahthackeray9@gmail.com

Alex Tooze 01404 822800

Alex_tooze@hotmail.com

Advertising

Jenny Fells

jennyfells@btinternet.com

Community Diary

Louise Walmsley

walmsley_louise@yahoo.co.uk

Delivery

Cathy Sharkey 07874 999204



**TIME
TO
DREAM
BIG**

HALLANDSCOTT.CO.UK



CONTACT OUR OFFICE
TODAY FOR A
FREE VALUATION
AND MORE INFORMATION
ABOUT OUR SERVICES

CALL: 01404 812000
VISIT: HALLANDSCOTT.CO.UK



the Jack *in*
the Green

Tel: 01404 822240
www.jackinthegreen.uk.com