

# *Whimble News*

---



---

June/July 2021

---

[www.whimplenews.uk](http://www.whimplenews.uk)

THE  
THIRSTY

# The Thirsty Farmer



FARMER  
WHIMPLE

WHIMPLE, EXETER, DEVON, EX5 2QQ

Telephone: 01404 822287

[www.thirstyfarmer.co.uk](http://www.thirstyfarmer.co.uk)

**A FRIENDLY PUB, SERVING GOOD  
QUALITY, LOCAL PRODUCE.**

## CURRENT OPENING HOURS

MONDAYS: 5pm FOR DRINKS ONLY (EXCEPT BANK HOLIDAYS)

TUES-THURS: FOOD SERVED 12-2pm 5pm - Close

FRIDAYS: 12 - Close FOOD ALL DAY

SATURDAYS: 10.30am - Close FOOD ALL DAY

SUNDAYS: 12 Midday - Close FOOD ALL DAY

## SPECIALS

SATURDAY BRUNCH IS BACK 10..30 - 2pm!

TUESDAY IS PIZZA NIGHT 5.30 - 9pm

THURSDAY NIGHT IS STEAK NIGHT 5.30 - 9pm

TAPAS x 3 AND A MEDIUM GLASS OF HOUSE WINE ONLY £15

Friday Kids eat HALF PRICE between 3.30 and 5pm (kid's menu)

LOOK OUT FOR UPDATES IN WHIMPLE WHAT'S ON!



WE ARE SO PLEASED TO BE OPEN  
BOTH INSIDE AND IN THE  
OUTSIDE AREAS NOW. FOR TABLES  
INDOORS, WE CAN BOOK UP TO 6  
CUSTOMERS FROM MIXED  
HOUSEHOLDS PER TABLE, OR ANY  
AMOUNT FROM TWO  
HOUSEHOLDS, UNDER CURRENT  
GUIDELINES.



# Welcome to our end of lockdown edition

I'm delighted to have been given the opportunity to pen this Welcome to the latest edition of The News!

The overwhelming feeling that runs through this edition is that of opportunity and reawakening – given what the last 14 months have meant for us all. I am sure I am not alone in delighting in the fact that those businesses who have had to endure lockdown, now have the ability to go back to doing what they love doing – looking after their customers. I have played my part and already reacquainted myself with The Jack in the Green and The Thirsty Farmer – thank you for the warm welcome back.

Throughout the difficult months of the pandemic, Mark and Jenny (and their team) have kept going and made sure that anyone who needed to use the shop and Post Office could do so, despite the challenges. For many they have been close to an Emergency Service, we owe them a real debt of gratitude, so again I say on behalf of the village – a heartfelt “Thank You”.

Both the shop and the New Fountain are now at a watershed, with changes coming – see inside for more detail and comment.

Our local weathermen also share the latest ‘stats’ for the village micro-climate – all I know is that May has been blooming wet and cold thus far!

Again, looking forward, this edition carries information re an absolutely packed Village Week, local groups restarting their activities and further easing of the required restrictions on getting together to do whatever it is we do together as groups – neighbours, friends, likeminded people with shared interests, as well as families. I imagine the village will again have that real and palpable ‘buzz’ about it that we all enjoy! The Victory Hall is back in full swing with many of the usual events restarting, with only a few remaining restrictions – who would have thought that ‘Whiff Whaff’ was deemed rigorous?

Claire Rayner has become the Parish Clerk, following on from Kevin Finch, so a warm welcome to her in the role, and thanks to Kevin for what did over his tenure. I for one am grateful for the hard work Kevin put in, in serving the village, as well as the ease with which he could be contacted and friendliness in all our dealings.

Enjoy this edition of The News and the normality I hope we can now enjoy for the long term. If we can, let's all get out there and support our local businesses.

If you would like to contribute to our August edition we would love to hear from you. You can email Bob at [bob.scanlan@eclipse.co.uk](mailto:bob.scanlan@eclipse.co.uk), by 13th July please, or drop a note through either Bob's door. (Albecq, The Green) or Sally's (32, Whiteway Close, opposite the Thirsty Farmer).

**Miles Leonard**

# **KILN-DRIED HARDWOOD LOGS**

**IDEAL FOR OPEN FIRES AND WOODBURNING STOVES**

Beech - Birch - Ash - Sycamore - Oak - etc  
Free sticks with every load



For Helpful Advice and Prompt Deliveries  
Telephone Exmouth (01395) 277242

**PETER SALTER A.I.R.T.E.**

**MOBILE MOTOR ENGINEER**

(Member Institute of Road Transport Engineers)

Servicing & M.O.T. Preparation

Engine Overhauls & Bodywork Welding

Cars & Commercial Vehicles

**Telephone: Whimple (01404) 823054**



# What's on in Whimple

As we go to print, we still do not know for sure whether lockdown will be fully lifted on 21st June or could be delayed.

We do know, however, that a lot of effort has gone into planning a return to something like normal life in our village from the beginning of July.

Events in the Victory Hall, Village Week and Village Day are being arranged with a great deal of care to make sure that everyone stays safe as we emerge from this pandemic.

So let's stay optimistic and give them our full support

## May

17th Zumba and snooker resume in the Victory Hall

25th Exercise classes for older people start in the Victory Hall

## June

16th Devon Over 50s v Somerset at the Cricket Club

22nd Parish Council meeting in the Victory Hall at 7.00pm

29th Devon Seniors v Worcestershire at the Cricket Club

## July

**Village Week** - watch out for the ducks! More details on page 32.

3rd Tale Valley Choir Whimple Church 3.00pm. Details on page 31

4th VPA trip to Hartland Abbey. Details on page 53

5-8th WhimpOlympics begin in the Parish Field 4.00pm

5th Pizza making for Kids at the Thirsty Farmer 4.00pm

6th History Society Treasure Hunt and Alfresco BBQ at the Heritage Centre starts at 5.30pm

6th Skittles tournament at The Thirsty Farmer begins

7th Unveiling of 'Whimple in Stich' at the Heritage Centre 2.00pm

7th Whimpletons' Quiz Night at the Victory Hall 6.30pm. Details on page 19.

8th Tennis Club open evening at the Tennis Club with BBQ. 6.00pm

8th Whimple & Broadclyst Young Farmers Bingo at the Victory Hall 7.00pm

9th Cricket Club Youth Coaching at the Cricket Club

9th An Evening with Jim Causley at the Victory Hall see page 37 for details

10th Village Day Starts at 11.30am with the warm up for the fun run followed by lots for the whole family to enjoy. Details on pages 32 to 38.

## August

1st Ben Moon Testimonial T20: Rugby XI v Exeter City XI at the Cricket Club

20th Whiteways Cup at the Cricket Club

Other events will get under way as things return to normal. Keep an eye on the Whimple News Website and 'Whimple Whay's On' on Facebook for the latest information.



Unfortunately there is no update on the sale of the shop. We have had a few more viewings so we are hopeful of movement soon.

If we really can't sell then we will be looking to lease the shop out. If we decide to go down this route then we will let the village know as there is an opportunity for people to get together to run the shop as a community enterprise and we would give you first refusal to do this.

We are carrying on as usual with lots of lovely fresh local produce. Eggs, milk and bread all come from within a few miles. We have great fruit and veg from Dart Fresh at Clyst St George. They work closely with local and UK growers to buy best quality affordable produce where possible.

With all of our fresh produce we are a small buyer so we cannot always compete with supermarket prices. Having said that our eggs and happy shopper range of products are amazing quality at great prices and we try to buy seasonal fruit and veg to help keep prices down.

It has stayed pretty quiet for us and we haven't seen a return to a regular routine. Getting our staffing levels right is difficult at the moment and most of the time there will be just one of us running the shop and post office. We have sadly had to say goodbye to Helen. She has always had a lovely smile for everyone and was a valued member of our team.

Most days there is a cross over time between 12 and 1pm and again between 5 and 6pm. There will be two of us there at other times to help with times that we know will be busier and if new 'pinch points' occur we can adapt accordingly.

## **Post Office**

If you need to do something complicated or time consuming at the Post Office we would appreciate you coming in when there are two of us there if at all possible. You can help us to speed things up by leaving large quantities of posting with us for processing, you can bag up coins in complete bags for banking, you can take customs labels so your parcels are ready to post and you can speak to us at the shop to ask for information and banking envelopes. Please have your parcels and letters in a fit state ready for posting and remember you need to be able to tell us what is inside the parcel and the value.

We are always happy to give advice and we are really grateful to all of you who already use drop and go services or ask for 'best times' when needing extra help.

We know how important the Post Office is to everyone but the reality is that it is not a very financially rewarding enterprise and they are not a particularly easy company to work with. Royal Mail are negotiating new contracts which are not great and could see a reduction in income as well as starting new services that cut out the Post Office altogether.

We are hopeful that someone will take on the Post Office when they take on the shop.

We have to give six months notice to finish so we will have to start that process soon. Effectively we give notice to quit but can carry on until someone takes it on. That can be quicker or longer so us giving notice is not necessarily a termination but if we don't start the process it could drag out any future sale.

Hopefully that will keep everyone up to date with what is going on.

Mark and Jenny

Mark, Jenny and Team



Welcomes You

ALL SERVICES AVAILABLE

Shop	Post Office	Refreshments
Fresh local bread, milk, fruit, veg, eggs	Cash withdrawals	Tea selection
General groceries	Banking services	Fresh coffee selection
Stationery & hardware	Bill payment facility	Hot chocolate
Logs & kindling	Postal services	Cold drinks
Newspapers	Euros & currency orders	Cakes
Alcohol & tobacco		Chunk Pies & pasties

Regular or one off orders can be made.

Other services.

Pharmacy collections for Finhoe surgery, Box office for local events, Book recycle/swap

The Square, Whimple, Exeter, Devon EX5 2SN

01404 822316

## Whimple Parish Council

Whimple Parish Council would like to say a heartfelt thank you to Kevin Finch for all his hard work and dedication to the role of Parish Clerk. Kevin has decided to step down from the role after four fantastic years in post having offered invaluable support and expertise to the Parish Council, he will be sorely missed. Claire Rayner has been appointed in the role and is now the contact if you need to contact the Parish Council. Please note that the number for the Parish Council has changed to 01404 812570.

The Parish Council would also like to inform residents that meetings are now returning to face to face meeting in the Victory Hall. The next Parish Meeting is Tuesday 22nd June at 7.00pm.

**Claire Rayner**, Clerk to the Parish Council

## Opening up services

The last year has offered up many new challenges for all of us and we have all been made to adapt to new ways of working and socialising. This has been especially evident in how we have been able to safely look after our patients in a global pandemic.

For months, we have been working with a 'triage first' approach where every patient is offered a telephone appointment with a nurse practitioner or GP first, and then offered a face-to-face appointment if the clinician thinks it is necessary. Occasionally we have been able to offer routine phone appointments with a GP, which can often only be booked a few weeks in advance.

As you can imagine, our reception staff and clinicians have been working tirelessly to manage this increasing workload. We are sure that you have experienced the longer queues on our phone system and the wait for an appointment with a GP of your choice.

With your help, we would like to start opening some of our services back up.

When contacting the practice from June, you will be offered the choice of being placed on the duty triage list to receive a call back from a clinician on the day, or you will be offered the next available appointment with a GP of your choice.

The duty triage list is only for patients who have an **urgent, on-the-day medical need**. If your condition is not urgent, and you are able to wait for the next available appointment, please do so. This will allow us to free up more clinicians, so that more routine appointments can be booked with your preferred GP or nurse practitioner.

As you all are, we are very eager to return to some sense of normality in our daily lives and return to a more efficient and sustainable way of running the practice and seeing patients. To make this a reality, we all need to work together. By agreeing to wait for the next available appointment (if your condition is not urgent), you will be instrumental in helping us to return to a similar way of seeing and treating patients as we were pre-pandemic.

There is, of course, no guarantee that we will return to the exact same way we were working before the pandemic but with your help, we will be able to work in a way that will continue to provide excellent patient care with more options available to you on how this can be done.

Thank you for the continued patience and kindness you have shown us over the last 14 months.

## Rochelles' Curtains, Blinds and Foam

Phil-kendall@hotmail.co.uk  
07525 618286 (Phil)

We come to you  
for measuring, quoting and fitting

Made to measure Curtains and Blinds  
Wide selection of fabrics  
Tracks and poles  
Fitting service  
Free measuring service  
In-house making service  
We also make with your own fabric  
We make covers for foam cushions

FOAM cut to size for upholstery/caravans/boats etc.  
Revive old furniture  
Upholstery foam/Closed cell foam/Memory foam toppers  
Polystyrene bead for bean bags

## REVIVE HEALTH & WELLBEING

### HOLISTIC TREATMENTS

- MASSAGE, REFLEXOLOGY, & CRANIOSACRAL THERAPY  
Home Visits, Workplace, Ottery Osteo&Physio  
Or Exeter Physio Centre

### YOGA CLASSES (restart 18<sup>th</sup> MAY)

- ADULTS: TUES 9.30-10.45am & 6.30-7.45pm  
Whimple Scout Hut

### NATURAL LIVING with ESSENTIAL OILS

CLASSES, PRACTICAL WORKSHOPS, & PRODUCTS

For groups, individuals, families



**CONTACT: Sarah 07591 599162**

**reviveguernsey@gmail.com**

for a consultation, information, or bookings.

Visit **Revive Massage** on Facebook for Offers & News

# AERIAL SERVICES (Mike Cummings)

- Same Day Service Available
- 7 Days A Week
- Sales, Service, Installation
- Repairs & Reception Problems
- Digital Aerial Upgrades



- NO CALL OUT CHARGE
- FREE ESTIMATES

**01392 279513 07836 641635**

**www.aerial-services-mikecummings.co.uk**





**Woodlands**  
Teacher Led Childcare

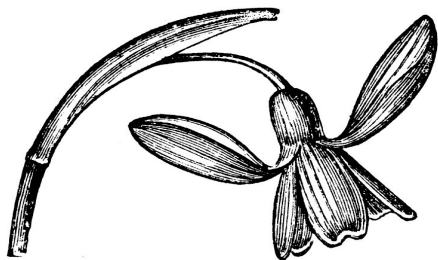


At Woodlands TLC, it is our mission to give your child the very best in "educare"

We provide excellent home-based early years education to a very small group of 1-5 year olds in Whimple, Exeter.

- Monday - Friday
- Term-time only
- No fees during holidays
- Teacher Led Childcare (TLC)
- Ofsted registered
- Paediatric First Aid

[www.woodlands-tlc.co.uk](http://www.woodlands-tlc.co.uk)



**Jo White**

**GARDENING**

PLANTING  
MAINTENANCE  
DESIGN

TEL: 07805 824197

JOWHITEGARDENING@GMAIL.COM

# Need a Handyman?

**LOOK NO FURTHER -  
MARK'S A VERY HANDYMAN**

No job too small - all types of DIY undertaken

- Domestic Plumbing
- FLAT PACK!! Furniture Build
- Garden Clearance
- Garden Equipment Repaired and Serviced
- Kitchen Units Built / Fitted
- Laminate Floors Laid
- Painting and Decorating
- Patio Cleaning
- Tiling
- Wallpaper Hanging



**M R HANDYMAN**

Call for a free quote -

**01404 813123 - Mobile 074361 10727**

Mark Rix 17 Ridgeway, Ottery St Mary EX11 1DT  
e-mail: markrix@talktalk.net

## Lamb Hill Garden Machinery

• Sales • Repairs



• Servicing

Andrew has over 20 years experience in the garden machinery industry. Previously at Otter Nurseries & more recently at P.J.Flegg.

FOR ALL YOUR GARDEN MACHINERY NEEDS

**CALL ANDREW TODAY**

**01404 823100/07773 579072**

Moorview Industrial Estate Straightway  
Head Whimple Devon. EX5 2QT

Email: lambhillgardenmachinery@hotmail.co.uk



## ***Whimple Victory Hall***

We're very pleased that the Hall will start to get back to normal from 17th May.

### **Indoor sessions and exercise classes from 17th May**

Regular hirers must still follow our Risk Assessment, social distancing, wearing of masks, hand sanitising and Rule of 6 groupings.

Zumba and Snooker will start again from the week commencing 17th May, a new weekly exercise class for older people commencing 25th May and Parish Council meetings will take place from week commencing 22nd June (dependant on full relaxation).

The Model railway group cannot return yet due as there is no clear guidance from their professional body to date. Table tennis is classified as rigorous exercise and cannot commence until after full relaxation.

The kitchen will remain closed for use until there is full relaxation of regulations.

### **Hire, sessions and classes from 21st June**

Unfortunately, we cannot be certain about the numbers allowed, or any mandatory precautions we will have to adhere to, for hirings after the 21st of June. We will announce details as soon as we can - hopefully in the few days preceding 21st June.

For any hire enquiries, please contact Ali Tierney, the Bookings Secretary on 01404 822724.

### **Hall works**

We have had a comprehensive drainage survey done and intend to undertake refurbishment of the drains over the school summer holidays.

### **Refurbishment fund**

Lastly, thank you to all those who have recently and very generously made a donation to the Refurbishment fund. The response continues to be fantastic and we hope to reach our target very soon.

**Maria Wallis, Chair**





## SAVE THE NEW FOUNTAIN INN UPDATE

As of the end of May there has still not been any decision made on the planning application for the New

Fountain Inn.

If the planning application is refused, and the present owner decides to sell, then as it is a 'Community Asset' it must be offered to the village first, to purchase. The 'Save the New Fountain Group', have been working to hard to see if this is a viable option, and should it be offered for sale whether the village would like to proceed to purchase and run a 'Community Pub'.

Many of you have filled in a survey, and we would like to thank you for doing so. We need to show evidence that Whimble would support a 'Community Pub'. Many of you have indicated that you would be and also that you would be willing to become financially involved, and would be happy to offer a variety of services such as building, plumbing etc. We would like to stress that we are at very early stages of planning, and this is purely to prove that the purchase could be viable, if it is offered for sale.

The level of support was also evident at the Heritage Centre earlier this month. The diversity of villagers that wish to retain this community space was quite evident. This is a community project and we appreciate everyone's support whether it is baking a cake, delivering surveys or purely offering moral support. Please do contact us if you would like to get more involved that you already are, you would be very welcome. Please be mindful that the car park at The New Fountain it is a private car park, and we can not assume that we can use it. If you feel that you would like to use the car park for whatever reason then please contact Paddy. Paddy has kindly agreed that the car park can be use for the Annual Treasure Hunt during Village Week.

**Save the New Fountain.**





**TRADITIONAL  
PUB**



**MEETING  
PLACE**



**FROM  
THIS**



**MORRIS  
DANCING**

**WASSAILING**

**FREE HOUSE**



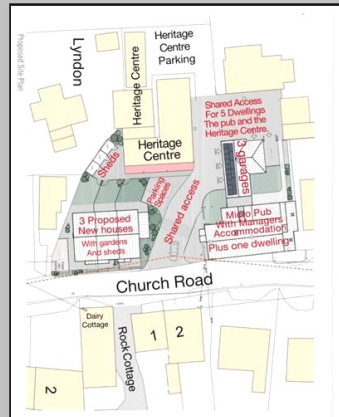
**COSY BAR**

**TO  
THIS**



**KEEP A LOOK OUT  
FOR UPDATES FROM  
OUR 'SAVE THE NEW  
FOUNTAIN INN  
GROUP' ON THE  
WHIMPLE WHAT'S  
ON FACEBOOK PAGE  
AND WHIMPLE NEWS**

**SAVE  
THE**



**NEW FOUNTAIN INN!**

*From: Save Whimple's New Fountain Inn Group*

**gs** gilbertstephens

# Local legal & financial advice

Call our Exeter office on:

Legal Services      **01392 42 42 42**

Financial Services      **01392 34 64 64**

Or contact one of our other offices

Ottery St Mary 01404 81 22 28

Sidmouth 01395 51 24 43

Visit [gilbertstephens.co.uk](http://gilbertstephens.co.uk) for more info

Gilbert Stephens is the trading name of Gilbert Stephens LLP which is authorised and regulated by the Solicitors Regulation Authority (no. 536070) and Gilbert Stephens Financial Services Ltd which is authorised and regulated by the Financial Conduct Authority (no 579899).



## O'DELL PLUMBING & HEATING

[jasonodell.plumbing@gmail.com](mailto:jasonodell.plumbing@gmail.com)

**07974 818833**

FOR ALL TYPES OF GAS AND OIL HEATING INSTALLATIONS.

BOILER SERVICE, REPAIR & BREAKDOWNS.

BATHROOMS & SHOWERS.

UNVENTED HOT WATER SYSTEMS.

UNDERFLOOR HEATING.



**4094**

**AVAILABLE FROM WHIMPLE P.O.**

Now is the time to shop local  
Stay safe everyone!



**Also available from us in bag in box!!**

**FREE LOCAL DELIVERY**

**Courtneys of Whimple**

[cider.apples@hotmail.com](mailto:cider.apples@hotmail.com)



Perfect for Gin, Rum & Cider Lovers.



Low Alcohol and Fruit Ciders  
NOW AVAILABLE TOO!

Check us out:

[www.courtneys.online](http://www.courtneys.online)

or Whimple Stores



**THE EXE GIN**

Delightfully smooth



**GRUMBLEBEE HONEY  
SPICED RUM**



# A History Of The Thirsty Farmer

## Pulling Pints for Centuries



The Thirsty Farmer hasn't always been a public house, or called The Thirsty Farmer. Built in the mid -1800s it was originally called Fordton House. Edward Broom was Head of the house in 1861, listed as Farmer and Master. By 1881 retired farmer and grocer John Trump and his farming wife Esther lived and remained at Fordton House for over 20 years. They used the stables (now The Coach House) to hold and sell livestock, jams and cream. In 1905 Henry Whiteway bought Fordton

House and buildings. Henry Whiteway established The Whiteway Cyder Company in Whimble in 1896. The company grew to be one of the most influential cyder producing companies in England, with its factory providing local employment for nearly 100 years.

The New Inn public house was opposite Fordton House (in the building known today as “The Old Inn”). The earliest Census of 1841 lists Mr Henry Wright as the Publican. By the 1881 Census John Beer was Inn Keeper. When John died in 1915, his daughter-in-law Mary took over and continued to run The New Inn after it was purchased by St Anne's Well Brewery Co Ltd of Exeter.

1921 saw a big change. The New Inn needed a lot of renovation work. Henry Whiteway (still living at Fordton House) and St Anne's Well Brewery swapped properties. Henry took on the The New Inn plot and buildings on either side, and The Brewery took on Fordton House and stables. Fordton House was renamed The New Inn and a sign still remains on its stable building (now The Coach House).

Generations of The Beer family continued to run The New Inn for decades, overseeing the location swap, working through the merger in 1956 of St Anne's Well Brewery and Exeter based brewery Norman & Pring Ltd. Six years later Whitbred Brewery purchased St Anne's and inherited The New Inn.

Pat and Dyrick Brown had the pub from 1977 and decided to run a competition to rename the pub and The Thirsty Farmer is born. Following on with tradition, in 2018 Marc and Donna Slater, a competition to give a name to the farmer in the new logo. Farmer Burt now proudly swings in the beer garden.

**Donna Slater with help from Sue Ayres and Kerry Powell**

## Publican Roll of Honour



Henry Wright 1840s  
 Phillip West 1850s  
 Isaac Richards 1850S  
 William Gapron 186üs

John Beer 1880s

Mary Beer 1915  
 (daughter-in-law of John Beer)

Muriel & Freddie Harris 1940s  
 (daughter and son-in-law of Mary Beer)

Cyril & Shirley Braunton 1970s

Pat and Dyrick Brown 1970s

Colin & Pat Landcombe/Roger Hotchon 1998

Alison and Michael Corbett 2000

Vickl Woolf/Tanya Williams 2003

Marc & Donna Slater 2018



## Building Ownership

1800s New Inn serves the villagers of Whimble

1800s Fordton House built mid 1800s



1905 Fordton House bought by Henry Whiteway

1916 New Inn purchased by St Anne's Well Brewery of Exeter

1921 Henry Whiteway and St Anne's Well Brewery swap premises.  
 Fordton House becomes the New Inn

1956 St Anne's Well Brewery and Norman & Prlng Brewery merge

1962 Whitbread Brewery purchases St Anne's Well Brewery, inheriting The New Inn

1978 Competition to rename the pub.  
 Pub renamed The Thirsty Farmer

1998 Renovation work. Skittle alley removed where the restaurant is now.  
 Fire place opened up.

2000 Whitbread Brewery sell to Alison & Michael Corbett

2003 Pub sold to Enterprise Inns



Timeline

**Masonry & Conservation  
Specialists**

**Repairs to Listed and Historic Properties**

**Traditional Lime Mortar Repointing  
Brick Repairs - Walling**

**Clyst St. George, Near Exeter**

**Tel: 01392 879824 Mob: 07825 698507**

**Email: [info@abacusstoneconservation.co.uk](mailto:info@abacusstoneconservation.co.uk)**

**Web: [www.abacusstoneconservation.co.uk](http://www.abacusstoneconservation.co.uk)**

# Window Cleaner

**High reach hot water system**

**Frames and doors all in**

**Gutters/Fascias Cleaned**

For that personal service

**Sean**

**Harris**

**814963**

**07737 419077**



*Straightway Head*  
**HOUSE**  
LUXURY BED & BREAKFAST

*Whimble, Exeter, Devon EX5 2QS*  
*01404 822177 / 07894 575975*  
*[contact@straightwayheadhouse.co.uk](mailto:contact@straightwayheadhouse.co.uk)*  
*[www.straightwayheadhouse.co.uk](http://www.straightwayheadhouse.co.uk)*



## STRAIGHTWAY HEAD HOUSE BED & BREAKFAST

*Luxury Country House Bed and Breakfast Accommodation in a peaceful rural setting on the edge of the village, with stunning views over Dartmoor*

*All rooms are en-suite and furnished to a high standard.*

*Have you got a special birthday or anniversary coming up?  
Why not hold your party here and let us do all the hard work for you?  
Cally is a Cordon Bleu trained chef with many years experience.*

*Ample Parking / Transfers to Exeter Airport*



**HOSTED BY THE WHIMPLETONS!!**

IT'LL BE  
UDDERLY  
GREAT!



**Teams up  
to 6 max.**

**BYO  
DRINK  
AND  
SNACKS**



# **THE BIG VILLAGE WEEK! QUIZ**

**WEDNESDAY**

**7TH JULY**

**WHIMPLE VICTORY HALL**

**DOORS OPEN 6.30PM FOR A 7PM START.**

**TEAMS OF 6 MAX. TICKETS £3.00 FROM WHIMPLE  
STORES, OR ON THE DOOR.**



## Hello all

The Whimbletons are delighted to announce that as long as things keep going in the right direction there will be a Pantomime in February half term.

OH YES THERE WILL!

We were unable to celebrate our 25th year with you all so we will be having a 25 plus 1 instead. Neil has been re-invigorating his creative juices and those of us who make it through the tough auditioning process will be handed the top secret scripts in a few months time to get to work learning the lines and trying to remember which is stage left and right. There are no further details that I can reveal yet, but I just wanted you all to know we are looking forward to donning Sues hand made costumes and piling on the makeup and false eyelashes to make you all smile and perhaps raise a small titter too.

We will be holding the village week quiz in July, roadmap permitting however things will be a little different this year as there will be a bring your own refreshments and snacks. Nevertheless we are moving in the right direction and I look forward to revealing a little more soon.

If you would like to get involved in any way be it back stage front of house or just creating mayhem, please get in touch with myself or Neil Walker .

Let's all continue to stay safe and look after each other.

**Cathy Bartlett-Horwood**

## Whimble in Stitch

Many of you will be aware we are creating an embroidered "map" of the village. We have had 54 people aged between 8 – 81 involved. Obviously not every building can be included, but we hope we have captured the spirit of our home. Now we can meet in small groups, we are currently attaching all the individual elements to the background cloth.

The completed "map" will be displayed for the first time at the Heritage Centre during Village Week. We are hoping it will be unveiled on Wednesday 7th July at 2pm at the Heritage Centre, but the time will be confirmed on the Whimble What's on Facebook page and in the window of The Pea nearer the time.

The completed Whimble in Stitch will then be displayed at Village Day on 10th July.

Thereafter, it will have a permanent home on the wall of The Thirsty Farmer with an explanatory text and list of all contributors, including Harry Trimblett of Whimble Joinery who is kindly doing the framing.

Thank you

**Hilary Nowill**

- **Water pump**
  - supplies
  - repairs
  - installation
  - fault diagnostic
- **Private water supplies**
- **Filtration**
- **General domestic plumbing**

# DPPS

**07738 470274**

*Friendly, professional  
Whimble-based service*

[chris@dpps.uk](mailto:chris@dpps.uk)

[www.dpps.uk](http://www.dpps.uk)

**Devon Pump & Plumbing Services**

## Maths & Physics Online Tutoring

GCSE & A-Level

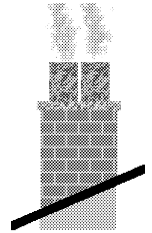
*Personal coaching to suit your needs,  
with experienced mathematician.  
Member of the Tutor's Association.*

Daytime/ Evening/ Saturdays.

For more information please see my website:  
[robertpooleymaths.co.uk](http://robertpooleymaths.co.uk)

**Robert Pooley 01404 822333**  
[robertpooleymaths@gmail.com](mailto:robertpooleymaths@gmail.com)

## Chimneys Wood Burners Fires



Swept, Installed, Repaired,  
Lined and Built

"All your chimney needs"

Alf Butler

**Tel: 01404 811843**

A fully insured and HETAS  
registered Company

# BARRY SEAFORTH DECORATING SERVICES

Est 1979



PAINTING WALLPAPERING

SPECIALIST FINISHES MURALS TILING

COVING CARPENTRY ALTERATIONS

REFERENCES AVAILABLE

Call Barry on 01297 22434

or 07712 120635

or email: [barryseaforth@gmail.com](mailto:barryseaforth@gmail.com)

## YOGABHOGA

### VINYASA FLOW YOGA

with Kate Hawley

Mondays 10 - 11.30am

Tuesday 7.00 - 8.30pm

Escot Village Hall, Gosford Lane, Ottery St Mary

**FIRST CLASS FREE!**

Suitable for all ages, abilities, flexibility and gender. Classes include postures, breathing exercises, meditation and relaxation.

For more info please contact Kate on 07706 215645 or email [yogabhogadevon@hotmail.com](mailto:yogabhogadevon@hotmail.com)

Find us on facebook @yogabhogadevon

### Serenity Bookkeeping Devon



Take the hassle out of your business accounting by using a local bookkeeper

Ideal for Small Businesses, Sole Traders and Partnerships.

End of year accounts prepared  
Vat Returns

Self-assessment returns  
Day-to-day bookkeeping

Contact Helena: 07916 135850

[info@serenitybookkeepingdevon.com](mailto:info@serenitybookkeepingdevon.com)

[www.serenitybookkeepingdevon.com](http://www.serenitybookkeepingdevon.com)



Your Personal Assistants

A niche group of personal assistants set up to provide top quality care and support.

Mobile: Poppy - 07786392480


Email: [saskialayburn@poppycare.org](mailto:saskialayburn@poppycare.org)



**Andy  
Brooker**  
Monumental Mason

**Whimble based  
Traditional  
Memorials**  
**Handcut Lettering**

**01297 33290  
07931 322291**



**Pilates Classes**  
Improves core stability and flexibility

Classes suitable for all ages  
and all abilities

Held on Mondays at 1:30pm and  
Wednesdays at 8.00pm  
at the Scout Hut in Whimble

£5 pay as you go or 12 lessons for £54

Contact **Julie Wallace - Edmonds**

Mobile: **07956 137493**

Facebook: **Julie Wallace Edmonds**

With aspects of life returning to normal, it just wants to make you sing:-

June is bustin' out all over!  
 All over the meadow and the hill!  
 Buds're bustin' outa bushes  
 And the rompin' river pushes  
 Ev'ry little wheel that wheels beside the mill!

The opening lines from '*June is Bustin' out all over*', from the Broadway Musical 'Carousel', by Rogers and Hammerstein. It was set in a New England Village. It's a song that captures the essence of spring, melting its way into summer, probably some of the best lyrics in musical theatre. This is where we are, living in rural Devon in the lovely village of Whimble. It's what we want to protect, preserve and conserve; hence the creation of POW&R Group in 2019.

## Local Plan

The new 'Local plan' for East Devon District was put out to consultation which took place from the 18 January 2021 to 15 March 2021. A first draft report of responses received has now been produced. This is very much in broad issues, based on the online questionnaires. There were a number of respondents from Whimble.

The intent of the May 2021 meeting of the Strategic Planning Committee was to provide a more complete feedback report that summarises some of the key themes and messages, and more frequently raised points, made in the consultation responses. However, this has been postponed. The next meeting is planned for 10th June 2021.

## New Fountain Inn Application

The latest update, as at 10th May 2021, was that the Planning Application for the New Fountain is being assessed with additional information being sought by the Planning Department. There may be a determination when the next Parish Magazine is published.

## Clyst Valley Regional Park

The Clyst Valley Regional Park Masterplan which went out to public consultation at Committee on 20th October 2020. There were 241 responses received to the consultation which have been summarised and is published as appendices provided in the report, available online (see Master Plan link below). POW&R Group has been very pro-active on this important issue, with several submissions.

The majority of comments were supportive of the concept and desires of the Regional Park. The main concerns were about the boundary of the Park and future expansion of the area.

At the Council meeting held on the 27th April 2021, it was agreed that the Clyst Valley Regional Park Masterplan, as a guidance document to inform the future delivery of the Regional Park and to support decision making on planning application within the policy boundary of the Regional Park, be approved. There is a 25-year Master Plan, available online at <https://eastdevon.gov.uk/planning/planning-policy/other-plans/clyst-valley-regional-park-masterplan/>.

### **Cranbrook Master Plan**

We are still awaiting further updates from the Planning Inspector regarding progress towards the determination of the inspection. Helen Badley, our Administrator, has written to Ian Kemp, the Programme Manager for the process. According to the Mid-week Herald, the ruling is expected to be made before the autumn of 2021. As always we shall keep villagers in the frame.

### **Neighbourhood Plan**

It has been very refreshing to see democracy in action, in particular, the local referendums for Parish Neighbourhood Plans. Farringdon, Newton Poppleford and Harford, and Otterton went to referendum on the 6th May 2021, the prep work being largely undertaken during the pandemic. This should add another three to the 18 Parishes that have secured this precious planning document.

As an observer, it seems that our own Parish Council has been kicking the plan into the very long grass for too long. The legislation was approved in 2011, but here we are in Whimble with things having not really made progress since the formation of sub-committees last year. POW&R Group have made a formal request for information to the new Parish Clerk but understand that the council are still awaiting responses from various consultants following an invitation to tender.

This is without doubt, the number one issue for the Parish Council to sort out, as with other nearby Parishes completing their Plans, any future development will inevitably be pushed towards Whimble. The village is in a very vulnerable position with no legal framework to counteract it without our own Neighbourhood Plan. It is even more imperative due to dramatic loosening of planning laws that give developers a freer hand to build over green fields, as outlined in the 'Queen's speech'.

### **Our former Independent District Councillor**

The Protect our Whimble and Rockbeare Group would like to express our sadness in losing our District Councillor for Whimble and Rockbeare, Kathy McLachlan. It was great to have one of our own working so hard and diligently for the needs of our community – a great loss. POW&R Group looks forward to working with Richard Lawrence, new District Councillor for Whimble and Rockbeare.

### **Our Village Group**

We need to build our POW&R Group Team. If you would be willing and able to give up some of your free time in order to help protect our village and Rockbeare from the ever expanding of Cranbrook urban sprawl, and any other developments that are proposed, we'd love to hear from you!

We wish all villagers well, good health and contentment.

**Alan Lascelles** - Press and Publicity, POW&R Group

Dated – 13th May 2021



New sweep, clean broom or something like that!

It's going to be challenging to follow in the footsteps of Barbara who has produced newsy, chatty articles on behalf of Whimple WI in recent years. My genuine thanks go to her.

At least I have some news to share with you, going forward. Our first meeting in June will be in a member's garden. It's been so long since we all met up that an opportunity to just share experiences over a cup of tea and obligatory piece of cake seems the best way to start again.

We have lost fourteen members in recent months, two have passed away and twelve have for various reasons decided not to re-join. We shall miss them, but we'll press on with thirty-one members, in cheerful anticipation of the opportunities a smaller group might bring.

We shall have our annual garden party in July, so sadly missed last year. Sarah's gorgeous garden beckons and we're hoping for a sunny afternoon. Another opportunity for more cake!

August sees our open meeting where everyone is invited to hear advice on phone and internet banking from Santander Bank. He might also give advice on how to avoid scams. We ask for £2 per visitor with tea/coffee and cake included. Bargainous!

I know that the WI has a history of appealing to older ladies, that isn't ageist, it's the truth and I count myself as one of them! We would love to welcome younger villagers and if you have any positive ideas how this might be achieved, we would love to hear from you. Marilyn, our secretary/treasurer is on 821860 or contact me on [di.eden@wi.org.uk](mailto:di.eden@wi.org.uk)

As a final and rather cheery note our WI cherry tree is in full bloom on the grassy area opposite the Thirsty Farmer, such a joy after a rather bleak winter.

Bye for now and keep safe

**Di Eden**





**SARAH JANE'S**  
UNISEX HAIRDRESSERS • WHIMPLE

Open Tuesdays to Saturdays from 9am

To book an appointment ring **01404 823400** or **07494 365547**  
or book through my Facebook page

New Inn Cross, Whimble EX5 2TT. Tel 01404 823 400

## Hats and Fascinators

- Bridal headwear and tiaras
- Mother of bride/groom
- Match your outfit/theme
- Men's buttonholes
- Unique fascinators for themed events
- Retrim a hat you already own
- Felt hats for winter
- Caps and berets



Tallulahmahoolah

**Hilary Nowill**

**The Pea, The Square, Whimble**  
**822581**

## SOUTH WEST Paddock CARE

JONTY CORBIN

01404 812139

07512678976

- 
- Topping
  - Harrowing
  - Rolling
  - Hedge-cutting
  - Spraying - weed control
  - Soil sampling
  - Lime spreading
  - Fencing, field shelters, stables.
  - Fully insured and qualified

[www.southwestpaddockcare.co.uk](http://www.southwestpaddockcare.co.uk)

# Whimble History Society



## History Society Update

So, rather like Snow White, the Heritage Centre has been awaiting that kiss from Boris and is now beginning to stir.

Was that a bit odd? Well, I'm going to blame it on a surfeit of Lockdown!!

Very soon the committee will be able to meet in person to plan the long-delayed AGM, the reopening of the Heritage Centre and a winter programme of talks. We also intend to run the Treasure Hunt on Tuesday 6th July, the BBQ on Village Day and look out for Apple Pressing being advertised towards the end of October. Once we have dates, look out for them being posted on the Events' page of the Whimble Heritage Centre website or on Whimble What's On.

Sadly, over the course of the last year two very important supporters of the committee have moved on.

Sue Ayres was a committee member and Curator of the Heritage Centre at one time. More recently she managed both the shop and our group of stewards. We will really miss her hard work, enthusiasm for history, ability to find an answer to a problem and extraordinary talent as a fundraiser. I'm not sure how we will manage without you Sue.

Another loss to the History Society was committee member Karen Hall-Williams who recently moved back to Sussex with her partner Barbara. Karen was also Curator at one point and did a wonderful job encouraging visits by community groups. She was another lady with enormous enthusiasm and I'm only sorry that she never did get to discover, and dig up, the Whimble Hoard with her JCB!

On that note, we are clearly going to be short of committee members. Please do get in touch if you feel you could help – even if it is just to have a chat about what you might be able to offer. Newcomers to the village needn't be shy – I think I'd only been here about a year when I was co-opted.

You can contact us via [info@whimble.org](mailto:info@whimble.org) or the Whimble Heritage Centre website contact page. If you'd like to become a member of the History Society, you'll find the form to help you do that on the website membership page.

**Louise Walmsley**



**PLANET SAL FOR  
GIFTS AND CARDS  
WHICH ARE A BIT 'UNUSUAL'**

**(Like the owner..)**

3, BLACK LION COURT,  
HONITON EX14 1ES  
**01404 45777**

**OPEN MON 11- 3  
TUES-SAT 10- 5.00**  
[www.planetsal.co.uk](http://www.planetsal.co.uk)  
[info@planetsal.co.uk](mailto:info@planetsal.co.uk)



# R J Spellman

Renovation & Property Maintenance

Internal | External Painting & Decorating  
Wallpapering & Coving  
Carpentry & Flooring  
Plastering & Dry Lining  
Kitchen Fitting  
Fitted Furniture & Wall Panelling  
Window & Door Fitting

Fully Insured

For a free quotation or advice please get in touch:  
e: [rjspellmanrenovation@gmail.com](mailto:rjspellmanrenovation@gmail.com)  
w: [rjspellmanrenovation.co.uk](http://rjspellmanrenovation.co.uk)  
t: 07511 533 765

Gas & Oil boiler repairs  
Safety certificates  
Servicing  
Installations



## FlameFix™

A local company providing  
a personal service

Call Jules

**07883 037667**

Visit us at [www.flamefix.co.uk](http://www.flamefix.co.uk)  
and read why customers say  
we're highly recommended

Oftec registered  
Gas safe registered



## FIRE SECURITY

UK LIMITED

### Fire detection and alarm systems

**INSTALLATION, COMMISSIONING  
& SERVICING**

Maintaining all types of fire alarm systems

- Domestic, commercial & industrial
- 18 years of experience
- Emergency repairs and fault finding
- Fire certificates
- Design and supply complete systems
- Schools, lets, small/large properties

Contact Chris for a free quote

**07875 841288**

[info@firesecurityuk.co.uk](mailto:info@firesecurityuk.co.uk)  
[www.firesecurityuk.co.uk](http://www.firesecurityuk.co.uk)

The key to your future peace of mind

**Marsh Barton**  
**01392 277467**

Units 1,2 & 6 The Space Place  
Alphin Brook Road  
Marsh Barton  
Exeter EX2 8RG



**Sidwell Street**  
**01392 217328**

131 Sidwell Street  
Exeter  
EX4 6RY

**email: [sales@guardiansecuritysw.co.uk](mailto:sales@guardiansecuritysw.co.uk)**  
**[www.guardiansecuritysw.co.uk](http://www.guardiansecuritysw.co.uk)**



**Whimple Joinery**

Quality bespoke Carpentry and Joinery  
Made from a variety of timber locally in Whimple

**Harry Trimblett**

Phone: 07564 357499



Facebook: @Whimple Joinery

Instagram: @Whimple Joinery



Email: [whimplejoinery@outlook.com](mailto:whimplejoinery@outlook.com)





Tale Valley Choir invites you to help us celebrate our return to live music and performance.

We've been working hard on Zoom for over a year and would love to share what we've been up to, with our customary mix of musical styles, for you to enjoy.

Sunday 4th July, 3pm, Whimble Church.  
Free entry, retiring collection.

Keep an eye out for any changes, on facebook and our website  
[talevalleychoir.org.uk](http://talevalleychoir.org.uk)



## VILLAGE DAY FUN RUN

- **DATE:** SATURDAY 10th JULY
- **TIME:** 11.30am - Warm Up with Caroline
- **REGISTRATION** - 9.30am onwards on the Parish Field.  
CASH OR CONTACTLESS available. You will be given a number. Please supply your own safety pins if possible.
- **ENTRY FEE** - ALL ADULTS(13yrs+): £3.50 Under 12yrs: £2
- **AGE GROUPS** - ADULTS, YOUTH (13-17yrs), UNDER 12s\*, OVER 50s
- **UNDER 12s** - Should run with a youth or adult or parents should sign to allow them to run by themselves.
- **COVID SAFETY** - If necessary, the start will be staggered with adequate spacing made for everyone to run safely. Running solo or in your family/group bubble will be fine.
- **REFRESHMENTS** - Please bring your own water bottle
- **MARSHALS** - There will be several marshals along the 1.25mile route, for your safety and to direct you along the course.
- **PRIZES** - There is a cup for the fastest runner (any age) and medals for the winner of each age group. Certificates will be awarded to all runners.

**NB. ALL RUNNERS DO TAKE PART AT THEIR OWN RISK**

There will be a hunt for ducks for children to do during Village Week with a prize given out on Village Day

Forms for the hunt will be available in a box outside The Pea







## Village Week Unlocked?

Well we certainly hope so.

I think everyone on the committee felt pretty despondent when we had to cancel Village Week 2020. However, we're a resilient bunch and the almost immediate response was to (almost) master the mysteries of Zoom and in no time at all, we were off planning again.

Our biggest problem has been uncertainty; from the Government, from us and also from the groups and businesses we normally work with. Will it, won't it, can we, should we? And truthfully, that uncertainty remains to some extent. Whilst I write this now, I'm very aware that you are reading it in the future and the chances are things may have changed again.

Nevertheless, we are optimistic and think we may have put together something that looks like being a pretty impressive week. Check out the programme on the centre pages and you'll find a lot of the old stalwarts such as Quiz night, Bingo, the Treasure Hunt and Pizza at the Thirsty as well as the Ducks and Picture Quiz. New for this year, Sarah Thackeray is organising kid's sport activities after school and Tim Adkins has put together a very impressive series of musical events including an evening with Jim Causley on Friday 9th July.

Village Day is also a mix of the old favourites and something new. A new act for the arena this year is Matt Pang, a comedy circus skills and tricks entertainer. He includes lots of banter with audience participation and comes highly recommended by Dan the Hat who so many of you enjoyed in 2019. We also have a Sea Shanty band doing a couple of sets on the day and hopefully later on at the Thirsty. There'll also be the usual stalls, bouncy castles, food outlets, bar, pony hoppers, egg catching and a plethora of games for the kids. We'd love to run a dog show or agility but unfortunately many businesses have closed or are only just getting going again. If you know of someone who could help please get in touch on 01404371433 or there is a real danger I will have to do it myself!

Lastly, and I think this might actually be the most important thing I want to say. We want this to be a real celebration for the whole Village as we emerge from this pretty dreadful pandemic. Many people will be happy to relax in line with what the Government allows. If you want to hug – that's great. However, not everyone in the village is going to be that confident and may just want to be a little more cautious. We would ask everyone to be conscious of that. We will go the extra mile by minimizing areas of concern where we can, provide plenty of sanitizer and will ask people to continue to socially distance when queuing.

So – fingers crossed and let's do this Whimple!

**Louise Walmsley**

# WHIMPLE VILLAGE WEEK, WHIMPLE DAY and FUN

Run by the village

	Afternoon
Sunday 4th July	<b>Tale Valley Choir</b> will perform at St Mary's Church.
Monday 5th July	<b>'WhimpOlympics'</b> Run and Throw at the Parish Field 4pm-5pm for KS2 children booking is essential. <b>Pizza making for kids</b> at the Thirsty Farmer 4pm-6pm at £5.00 person. You must prebook, ideally in family slots.
Tuesday 6th July	<b>'WhimpOlympics'</b> Hop, skip, jump & run like the wind at the Parish Field 4pm-5pm for KS2 children - booking is essential. The History Society <b>Treasure Hunt</b> at the Heritage Centre with an <b>Alfresco BBQ and soft drinks</b> hosted by Whimple Preschool
Wednesda y 7th July	<b>'WhimpOlympics'</b> Team Fun at the Parish Field 4pm-5pm for KS2 children booking is essential.
Thursday 8th July	<b>'WhimpOlympics'</b> The Finale at the Parish Field 4pm-5pm for KS2 children. - booking is essential.
Friday 9th July	
<b>Saturday 10th July</b>	<b>WHIMPLE DAY AND FUN RUN</b> on the parish field 11.30am-4.00pm Lots for the whole family to enjoy - games, stalls, refreshments, bouncy castles, pony hoppers and egg catching. Also introducing <b>Matt Pang</b> - a comedic circus act and workshop.
Sunday 11th July	

ALL THE ABOVE ARE SUBJECT TO THE GOVERNMENT  
PLEASE SEE POSTERS AND NOTICES AROUND

This year's Walking Picture Quiz will run through June until Village

# N RUN – Sunday 4th July- Sunday 11th July 2021 for the village

Evening
<b>Darts Tournament</b> at The Thirsty Farmer.
Football Club <b>Skittles Tournament</b> at The Thirsty Farmer.
Whimbletons <b>Quiz Night</b> at Whimble Victory Hall. Football Club <b>Skittles Tournament</b> at The Thirsty Farmer.
<b>Whimble Tennis Club</b> will be hosting an open evening at the tennis court from 6pm-9pm with a free BBQ. Everyone Welcome. Whimble & Broadclyst Young Farmers <b>Village Week Bingo</b> at the Victory Hall. Football Club <b>Skittles Tournament</b> at The Thirsty Farmer.
Whimble Cricket Club <b>Youth Coaching</b> . Football Club <b>Skittles Tournament</b> at The Thirsty Farmer. <b>An Evening with Jim Causley</b> at Whimble Victory Hall.
Football Club <b>Skittles Tournament</b> at The Thirsty Farmer.
Whimble Cricket Club's <b>Friendly Cricket Tournament</b> . <b>Songs of Praise</b> at St Mary's Church at 6.30pm.

REVIEWS ON THE NEXT STEPS OF THE ROADMAP  
D THE VILLAGE REGARDING ALL EVENT

Week – Look out for the £2 entry forms on sale from 1st June.

# **FREE CHILDREN'S SPORTS ACTIVITIES**

## **'WHIMPOLYMPICS'**



**WHEN? VILLAGE WEEK** - Monday 5<sup>th</sup> July – Thursday 8<sup>th</sup> July 4-5pm

**WHERE?** The Parish Field

**WHO?** KS2 pupils in Whimple (Max number 25 each day)

**WHAT?** Daily Sports Activities with a theme of The Olympics. You will take part in individual and team athletic events each session – running, throwing, jumping, relays etc. As well as a mini opening/closing ceremony routine. Each session is a stand-alone event, but if you attend all 4 you will receive a special certificate.

**DAILY ACTIVITIES** (\*maybe subject to change due to numbers, weather etc):

DAY	ACTIVITY*
MONDAY 5 <sup>th</sup>	RUN & THROW
TUESDAY 6 <sup>th</sup>	HOP, STEP, JUMP & RUN LIKE THE WIND
WEDNESDAY 7 <sup>th</sup>	TEAM FUN
THURSDAY 8 <sup>th</sup>	WHIMPOLYMPICS FINALE

**STAFF?** Sessions will be led by Sarah Thackeray an experienced Physical Education Teacher. She will be supported by Tim Adkins, also a qualified & experienced teacher.

**HOW? BOOKING IS ESSENTIAL.** To book a place please contact Sarah - [sarahthackeray9@gmail.com](mailto:sarahthackeray9@gmail.com) for a letter and booking form. Whimple School Pupils may also book through the school.

# Music events for Whimble Week

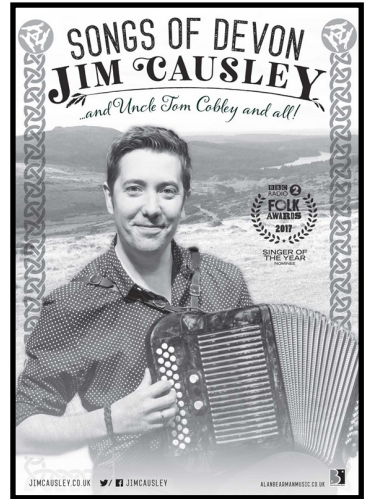
## Friday 9th July

We are very pleased and excited to be welcoming back Jim Causley to the Victory Hall for an evening of his Devon based song collection. This will be his first live concert for some time so we are very honoured to stage this performance as part of Village Week.

I am sure many will know Jim and his links to our village but if you are new to him please take the time to look him up on Facebook or via his website.

Tickets will be on sale from the beginning of June from the Whimble village shop or by contacting [stadiumproductions@hotmail.com](mailto:stadiumproductions@hotmail.com)

We will be adhering to government guidelines for live performances to ensure your comfort and safety however, restricted seating capacity will be in place.



## Saturday 10th July. (Whimble Day)

### NEW THIS YEAR

Live music will be performed on the Parish field during the afternoon.

We are pleased to be offering several fantastic acts who will perform on a small acoustic stage.

These include;-

**Kat Blockley**  
**The Wareham Whalers**  
**Rebecca Moyse (Byzantium Lane)**  
**Paul Smail**

## Saturday evening

**Wareham Whalers** at the Thirsty Farmer  
(From 7.00pm)

For more information contact Tim on [stadiumproductions@hotmail.com](mailto:stadiumproductions@hotmail.com)



To further enhance your safety, bio-security and well-being on Village Day we have invested in a number of contactless payment devices. You will be able to buy your drinks from the Bar, refreshments from the Tea Tent and snacks from the BBQ without having to hand over cash or receive change. Just bring your debit card with you and pay contactless!!

You will also be able to buy vouchers for the various children's activities and enter the Fun Run without having to hand over cash.

Cash can still be used but we hope you will use contactless as much as possible

**David Myers**

## Village Week Raffle

**Prizes of £150, £100 and £50 to be won!**

In order to raise the funds needed to put on these events we are again running a Village Week Draw with a total of £300 in cash prizes.

You will have received a book of draw tickets with this edition of Whimple News. Your generosity is vital to the success of the day so please buy some tickets and return the completed stubs and money to:

**David Myers , 1 Henry Lewis Close, by the end of June.**

(Henry Lewis Close is just beyond the end of The Square. Just follow the stream, Henry Lewis Close is on the left).

All proceeds will go to support Village Week and any profits go to the village organisations who work together to make the week a success.

**Bob Scanlan**







# WHIMBLE TENNIS CLUB

*A well-maintained private court near the centre of the village*

- Quality private court
- On court booking system
- Club 'just turn up' doubles sessions
- Coaching
- Low cost

Contact Viv Brown to join or for more details on 07876653264 or [whimbletennis@gmail.com](mailto:whimbletennis@gmail.com)

## the mindful gardener

*What business do I have  
in the woods if I am thinking of  
something out of the woods?*

Thoreau



Mindful maintenance of the garden you have created



Mindful planting schemes: transforming your desire into a design that works for its purpose



Mindful of your current wishes for your garden



Mindful of the environment



Mindful attention to special plants



Mindful of biodiversity

....giving you peace of mind

For more information contact Elaine Nicholas 07917386254 [elaine@danubblue.org.uk](mailto:elaine@danubblue.org.uk)

# GEOFF DELVES ROOFING

**YOUR FRIENDLY, LOCAL ROOFER,  
WITH OVER 30 YEARS IN THE TRADE**

**PLEASE CALL ME IF YOU WOULD LIKE  
A QUOTE FOR ANYTHING FROM  
REPAIRS, FLAT ROOFING AND  
TILE REPLACEMENTS, TO A FULL ROOF  
INSTALLATION OR SLATE WALL  
CLADDING.**

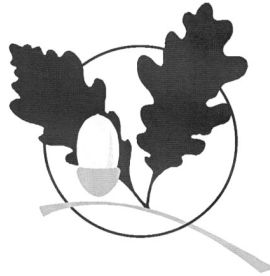
**07939 879305**

**01404 823258**

**(WHIMPLE)**

## Oak Building Services

*Quality works at competitive rates*



renovations  
extensions  
patios & fencing  
decoration  
bathrooms  
kitchens  
roofing  
carpentry  
maintenance

*References for all past projects available*

Contact Trevor Oakaby

at Brickyard Cottage, Whimpe EX5 2PP  
on 01404 822655 evenings & weekends

**TRY OUR  
PAYMENT PLAN**

**3, 6, 9 or 12 months  
THE EASY WAY  
TO PAY**

# RIDGE ROOFING



**AT THE TOP**

Guaranteed  
to beat any  
genuine  
produced  
quote

**FOR BOTH  
QUALITY  
& PRICE**



## & SCAFFOLDING SERVICES LTD

**ALL ASPECTS OF ROOFING UNDERTAKEN - FROM LEAKY ROOFS TO RE-ROOFS**

Ridge Roofing Ltd is a well-established company with over 25 years' experience behind them, working in partnership with most of the leading estate agencies.

- Slating • Tiling • Flat roofing • Fibreglass flat roofs • Chimneys/Leadwork • Turnerized slate roofs • Guttering/uPVC/fascia boards
- Storm damage/insurance work • All grant work undertaken
- Insurance backed guarantees • Full public liability insurance
- Free written quotations • All work guaranteed



**T: 01404 891813 M: 07789 555685 • [stephen.wattsrr@gmail.com](mailto:stephen.wattsrr@gmail.com) • [www.ridge-roofing.com](http://www.ridge-roofing.com)**

**VELUX®**

**RUBBERBOND**  
FLEECEBACK  
EPDM

**Crystic  
ROOF**

**HAS**  
CONTRACTOR HEALTH & SAFETY ASSURANCE SCHEME

**ST. MARLEY  
ROOFING**

**Redland**  
ROOFING SYSTEMS



# Whimble Cricket Club

We have really enjoyed getting the club open and welcoming players and spectators up to the club. It has been a bit of a learning curve coping with the restrictions, but table service has been running smoothly and we appreciate everyone following our guidelines. We're glad so many of you are coming up for a drink and enjoying our range of Oggy Oggy pasties and sausage rolls!

We will continue to open the bar on Friday evenings from 5.30pm, coinciding with junior training, and Saturdays and Sundays from 2pm. There is a Saturday home league game every weekend and Sunday friendly cricket most weekends.

## Upcoming Dates

We have a number of dates to look forward to coming up, with events and County age level cricket in the calendar:

- Wed 16th June: Devon Over 50s v Somerset
- Tue 29th June: Devon Seniors v Worcestershire
- Thu 22nd July: Devon U18 Girls V Cornwall
- Sunday 1st August: Ben Moon Testimonial T20: Rugby XI v Exeter City XI
- Mon 20th August: Whiteways Cup
- Sat 11th September: End of Summer Music Festival
- Sat 6th November: Bonfire and Fireworks

Tickets for the Ben Moon Testimonial, End of Summer Festival and Bonfire and Fireworks are on sale online and we hope to see you up at the club for some or all of these dates.

## Village Week Game

We will be hosting the annual Village Week cricket game on Sunday 11th July. The exact format will follow, but we will make this an opportunity for anyone to come and have a go at the game. Previous years have seen young people play for the first time and go on to join our All-Stars or Friday coaching groups, and adults have a go and go on to join our Sunday friendly squad.

## Umpires and Scorers

We are in need of additional help for Umpiring and Scoring on Saturday afternoons. We are happy to pay a modest fee for this and the club can provide any necessary training. Please get in touch if you might be interested.

## Pavilion Hire

Don't forget that the clubhouse can be hired for private parties and events, for daytime or evening events. Information on this is on our website at [www.whimblecc.co.uk](http://www.whimblecc.co.uk) or contact us to discuss your requirements.

**James Woollam**, Chairman.



DAN PLANK

# Master Thatcher

T: 01404 823081



 M: 07881 942516

daniel.plank@yahoo.com  
djpmasterthatcher.co.uk



The Devon Ceilidh Band For All Occasions

See our new website: [slackmagirdle.net](http://slackmagirdle.net)

Find us on Facebook

for more details or to contact us:

**01404 823083** [empal1@icloud.com](mailto:empal1@icloud.com)

New look, same great band!

# drainwizard

*Drainage and water main solutions*

- blockages
- jetting
- CCTV surveys
- repairs
- lining
- drain tracing
- pitch fibre reforming
- pipe bursting

- septic tank/treatment plant installation
- soakaway problems
- water leak detection
- water leak repairs
- moling
- renewals
- Patio, Driveway & Decking cleaning

Tel: 01392 461670

Mobile: 07834 712345

[www.drainwizard.co.uk](http://www.drainwizard.co.uk)



WE KNOW WHO WANTS  
TO LIVE IN YOUR PROPERTY



ASK FOR A FREE VALUATION

FOR FRIENDLY AND PROFESSIONAL  
ADVICE CALL US ON 01404 814306

[www.redfernsproperty.co.uk](http://www.redfernsproperty.co.uk)



[Zoopla.co.uk](http://Zoopla.co.uk)

Lee Maddicks

David Drew

# A New Business In Whimble!

## BRANCH OUT MORTGAGE SOLUTIONS

### TONY BICKEL OWNER

Throughout this last year many of us have seen change that we never saw coming. I was one of these people when HSBC decided that they no longer required a branch in Tiverton and that my role as Branch Manager was to demise leading to my redundancy. To say that my personal and professional life has been consistent for much of my life would be an understatement.

Firstly, to introduce myself my name is Tony Bickel, some of you may know me as Anthony or Biscuit. This all depends on how long you have known me. I am proud to say that I have lived in Whimble for all of my 44 years.

My Mother and Father both worked for Whiteways and brother, sister and I where all schooled in the village.

Once I settled down, I bought my first and only home in Whimble and married my Wife of 22 Years Zoe. 10 years ago, we added our son William who is just about to finish at Whimble Primary School and more recently retired greyhound Champ.

Now to the present day, after spending my whole professional life of 26 years around the selling of property (10 years as an estate agent) and the financing of property (15 years with HSBC), I took the decision to use all my skills to help local people with all aspects of home financing and protection. Branch Out Mortgage Solutions has been created to help people just like you! Maybe, you are looking to buy your first home or another home, need help to refinance your home adding recent unsecured debt to your mortgage to ease current financial hardship, or maybe your existing mortgage offer is ending soon.

I can also help you to protect your assets and families should anything happen to you earlier than expected by way of life Insurance or family protection.

A friendly chat is just a phone call away, 01404 227021 and as a double benefit for our community, if your mortgage of a Whimble property completes during 2021 I will charge no broker fee and donate £25 to Whimble Preschool, Primary School or Cricket Club.

See if I can help you **BRANCH OUT**

**Tony Bickel**



# BRANCH OUT MORTGAGE SOLUTIONS



Your very own Whimble Independent Mortgage Broker  
and life assurance advisor. Contact Tony Bickel on  
01404 227021 or [tony@branchoutmortgagesolutions.uk](mailto:tony@branchoutmortgagesolutions.uk)  
for a discreet chat.

For every mortgage application completed in 2021 with a Whimble address I will donate  
£25 to either Whimble CC, Whimble Pre School or Whimble Primary School.

# HALO'S @7

**OPENING NOVEMBER 2020**

**Unisex Hair Salon**

**Hazel Grove 07395 519788 Rockbeare**



## **EASTERBROOK, EATON LTD**



**Chartered Accountants-Registered Auditors**

**Relax!.....let us take care of all your Taxation,  
Accountancy and Business affairs.**

For a *free initial consultation*, contact us at  
8 Jesu Street, Ottery St. Mary, EX11 1EU

**Tel: 01404 812555**

Email: [advice@ee-osm.co.uk](mailto:advice@ee-osm.co.uk)

Web: [www.easterbrooks.co.uk](http://www.easterbrooks.co.uk)



# Avalon

PLANNING & HERITAGE

Avalon provides advice on an array of planning and historic building issues, adding value to larger or more complex projects, providing a bespoke service to suit any requirement.

Whether you intend to construct a new building(s), expand your current site, adapt an existing structure or evaluate an investment opportunity, it makes sense to consult a professional who shares your aspirations.

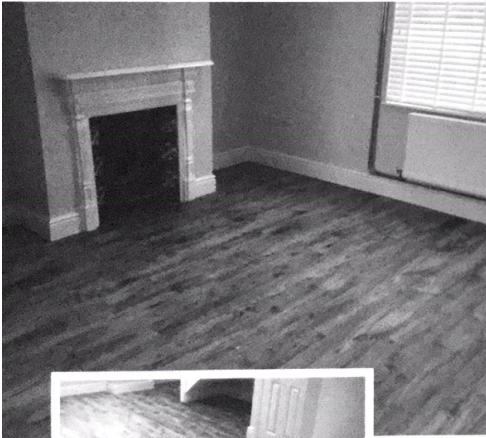
11-15 Dix's Field, Exeter  
01392 581150 (also in Whimble 823617)  
07979 518976

[murray@avalonplanning.co.uk](mailto:murray@avalonplanning.co.uk)

[www.avalonplanning.co.uk](http://www.avalonplanning.co.uk)

## ABSOLUTE FLOORING SOLUTIONS

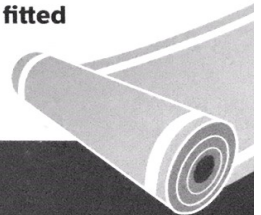
All aspects of floorings covered



### SPECIAL OFFER!

**SAXONY CARPET (choice of colours),  
QUALITY 10mm UNDERLAY and  
FITTING £18.99 m2!**

- Large selection of carpets and vinyls
- All aspects of wood flooring (Real wood, laminate etc)
- High Quality LVT tiles
- All subfloor works carried out
- All above supplied and fitted
- No job too small



**Gary: 07792 197510  
Craig: 07846 840175**

# A Window on Whimble's Weather – March/April 2021

Welcome to the third weather summary compiled from Whimble's two weather stations, one from Slewton Crescent and the other from Cobden Lane, live streaming local weather data;

Slewton Crescent Weather Station: <https://bit.ly/35qwR9K>

Cobden Lane Weather Station: <https://bit.ly/3bt3FTf>

Historical data sets are also available through the same links.

**March** – As we started emerging from the Lockdown and a fairly wet winter, the sunshine and milder weather were very welcome! The first 8 days of the month were mostly settled and the spell ended on the 8th with a sharp frost of  $-5.1^{\circ}\text{C}$ . Thereafter it became windier and wetter – with gales and heavy rain between 10th and 13th. High pressure then returned and it stayed dry for the next 11 days. After a little rain between the 25th and 28th, the last 3 days brought a taste of spring just in time to meet with up to 6 people outside – with temperatures climbing to  $20.9^{\circ}\text{C}$  on the 30th in warm sunshine. Total rainfall for March was 48.5mm, rather below the average, while sunshine and temperatures were slightly above normal.

**April** – was an exceptional month: one of the driest months (only 16.5mm) on record across the UK, and also one of the sunniest – but also one of the coolest, in fact even colder than March. The first 6 days were on that theme: sunny and dry, but cool. The 6th and 7th were unusually cold with a sharp frost on the 6th of  $-3.3^{\circ}\text{C}$  and daytime highs in single digits from a bitter north wind. The second week wasn't quite as sunny but remained mostly dry, apart from a little rain on the 12th. An incredible spell of fine weather lasted from the 15th to the 26th, with almost unbroken sunshine. As high pressure and mostly light winds dominated, overnight frosts were common. Daytime temperatures began to climb slowly, and  $17.8^{\circ}\text{C}$  was reached on the 23rd, but in a brisk south-easterly. The weather turned on the 27th as a depression descended from the north and brought the first significant rain in over a month.

2021	March	Date	April	Date
Warmest Day	$20.9^{\circ}\text{C}$	30/03/2021	$17.8^{\circ}\text{C}$	23/04/2021
Coollest Night	$-5.1^{\circ}\text{C}$	08/03/2021	$-3.3^{\circ}\text{C}$	06/04/2021
Windiest 24hrs	48.4 km/h	11/03/2021	32.3 km/h	06/04/2021
Wettest 24hrs	14.5 mm	12/03/2021	10.4 mm	28/04/2021
Av. Maximum	$12.6^{\circ}\text{C}$	N/A	$13.8^{\circ}\text{C}$	N/A
Av. Minimum	$2.4^{\circ}\text{C}$	N/A	$0.4^{\circ}\text{C}$	N/A
Total Rain	48.5 mm	N/A	16.5 mm	N/A
Total Sunshine	91.3 kWh/ kW	108.1% of Av.	138.8 kWh/kW	134.2% of Av.

Note: Wind data is from Cobden Lane, while other data is from Slewton Crescent.



## Care, Compassion and Commitment

Dedicated farm and companion animal vets and nurses,  
caring for your livestock and pets  
24 hours a day

Cullompton  
01884 35558  
Tiverton  
01884 258585  
Honiton  
01404 44095  
Uffculme  
01884 841317



[www.valeveterinarygroup.co.uk](http://www.valeveterinarygroup.co.uk)



- ◆ **PORTRAITS**
- ◆ **BODY BEAUTIFUL**
- ◆ **WEDDINGS**
- ◆ **COMMERCIAL**

[www.suedraycottphotography.co.uk](http://www.suedraycottphotography.co.uk)

[suedraycott@rocketmail.com](mailto:suedraycott@rocketmail.com)

**Home: 822969**

**Mobile: 07793 388012**



Your local wireless security system experts

**“LESS MESS LESS FUSS!”**

- Serving the South West since 1997
- SSAIB registered installers
- Bespoke system surveys by engineers
- Installation, servicing and system upgrades
- Only the best quality products used
- A local, friendly service you can trust

**“DON'T WAIT TILL IT'S TOO LATE!”**

**CALL US TODAY ON: 01392 487032**

[www.ellardsecurity.co.uk](http://www.ellardsecurity.co.uk)



# Devon's countryside is under threat

Now more than ever



You can help protect it.  
Join us today.

**DEVON** **CPRE**

The Voice for Devon's Countryside

**01392 966737**  
**devoncpred.org.uk**

A charitable incorporated organisation with registered charity number 1175228  
A member of the National CPRE network



## Further evidence that East Devon's housing targets are too high

Devon CPRE, the local branch of the countryside charity, was interested to see a recent report from the Office for Statistics Regulation. It confirmed what we've been saying for a long time, namely that the Government's housebuilding target greatly overestimates the real local need and that our countryside and green fields are unnecessarily being swallowed up for housing.



The OSR report, published in early May, is based on the ONS's Population Estimates and Projections. In a nutshell, it says the Government is planning for too many new homes. Furthermore, the OSR report undermines the Government's intention to remove 'obstacles' to the delivery of more new homes.

Here in Devon, the current target is 5,000 new homes a year, based on the Government's exaggerated goal of constructing 300,000 new homes a year in England. However, Devon CPRE's independent research has shown that 4,300 new homes would be enough to meet Devon's local need.



Our recent analysis of the Government's statistics on housing delivery shows that, in fact, Devon's local authorities are collectively exceeding the annual target of 5,000 new homes by an average of 30%. In East Devon, the over-delivery figure is even higher, on average the district has built 33% more new homes than it needed to over the past five years.

Despite this massive over-delivery of homes in East Devon, there's a woeful under-provision of the extra services and infrastructure (schools and GP surgeries, to name but two) to support the residents of all these new housing developments.

In Devon and across the UK, people put time, thought and effort into drawing up Local Plans to create a viable future for their communities. It's high time that the Government insisted that housebuilders adhere to these plans for the benefit of local communities rather than the shareholders of a multi-billion-pound industry.

And what about the build quality and the energy efficiency of many of these new homes? The Government's stated aim is to reach net-zero carbon by 2050, so it surely follows that the quality of construction, energy efficiency and location of all new housing should play a vital role in meeting this target. It seems obvious that building standards and planning guidelines should be adapted with this goal in mind. Unfortunately, that's often not the case.

*Devon CPRE is the only local charity campaigning to protect our countryside from inappropriate development. By joining Devon CPRE you can help us campaign for the right number and kind of homes to be built in the right places. To find out more, visit [www.devoncpre.org.uk](http://www.devoncpre.org.uk)*

## **now the Whimple and District Gardening Club**

As I alluded to in the last edition of the Whimple News, and as you can see from the heading above, we have renamed the Association. This was not a decision that was taken lightly but in some ways was forced upon us due to unforeseen circumstances. Although we fully respect the historic origins of the Association, mentioning the term VPA to some people only meant we had to explain to them what it stood for. As has been mentioned to me, if the label on the tin doesn't tell you what it is then it needs to be made clearer. So that is exactly what we have done. As Bob put in his last editorial, the new name doesn't quite trip off the tongue in the same way that VPA did! However, circumstances dictated that we needed to make a change and that is what we have done.

By the time this edition goes to press we will have hopefully staged a successful plant sale. This has only been made possible thanks to the kind permission of the Village Hall Trustees who have given us their permission to use the Village Hall Car Park. Clearly it was on a reduced scale to what we have organised in previous years but it was good to get this back on our calendar of events. Despite the very trying growing conditions throughout April and early May, we did manage to get a reasonable supply of plants available. Hopefully in 2022 we will be able to stage a full plant sale again.

At the time of writing, we are planning a coach trip to Hartland Abbey and Gardens in North Devon. This is proposed for Sunday 4th July. With this article is a booking form with full details. Together with the form is some very useful information about the Abbey and Gardens. Please note that payment is to be made to Whimple & District Produce Association as our bank has yet to catch up with our new name.

With a great deal of uncertainty about the situation will be post 21st June, we found ourselves in the difficult situation of what to do with this year's annual Flower and Craft Show. After much deliberation, we have made the very difficult decision to cancel the annual Flower and Craft Show for the second year. Not knowing what, if any, restrictions would be in place after this date, we felt that there was insufficient time to put together a successful Show. The last thing we wanted to do was to try and put together a Show at the last minute. So, regrettably, we have decided that we had no alternative but to cancel this year's Show altogether. We apologise for this but hopefully everyone will understand.

Details of all our activities are on our website, together with reports and photographs. So, visit us at [www.whimple-vpa.co.uk](http://www.whimple-vpa.co.uk) to get further information. In view of our new name, we will naturally be changing our website address in due course and hopefully the new website address will be in the next edition of the news.

**Paul Wilson,**  
Chairman, Whimple & District GC



# Whimble & District Village Produce Association

## Trip to Hartland Abbey, North Devon on Sunday 4th July 2021

To book please complete the form below

Name.....Tel. no. ....

e-mail address.....e-mails sent to more than you will be by Bcc.

Please enter below number of seats required.

VPA members £23.00 pp. Number of seats ..... Non VPA members £24. pp.

Number of seats .....

The prices includes coach, entry to house and exhibition.

I enclose a cheque for £..... made payable to Whimble & District Produce Association.

Please do not include 'Village' because the bank may not accept the cheque.

Please delete as appropriate :-

I wish to get on the coach at the Canaan Way car park Ottery at 9.00am // the Square Whimble at 9.15am.

Please return completed form with cheque to either Mrs Doreen Staddon, 1 Allergrove Cottages, Whimble EX5 2TJ Tel 01404 823594. Or Brian Nelson, Gerway House, Gerway Lane, Ottery St Mary EX11 1PW Tel 01404 813643

Or you can hand into the Whimble Stores or Roberts Hardware, Ottery St. Mary.

---

Hartland Abbey is the lived-in family home of the Stucley family. Although it was built in the 12th century, remaining as a monastery for 400 years and passing through the female line three times, it has never been sold. Consequently, it contains collections of pictures, furniture and porcelain which have accumulated over many generations. The story of the Abbey mirrors local and national history at every turn. It has a friendly and lived-in atmosphere, so often absent in many of our nation's historic houses, a point continually remarked upon by those who visit us.

Hartland Abbey was built in 1157 and consecrated by Bishop Bartholomew of Exeter in 1160 A.D. as a monastery of the regular canons of the Order of St Augustine of Hippo. The Abbey remained as a monastery until 1539 when it became the last monastery in the country to be Dissolved by Henry VIII. The King made a gift of the Abbey to the Sergeant of his Wine Cellar at Hampton Court, Mr. William Abbot.

The remains of the original Abbey can still be glimpsed within the basement. On the west are two Queen Anne extensions to the original. The main structure was demolished and rebuilt in the Strawberry Hill Gothic style in the 18th century with further improvements in the 19th century by George Gilbert Scot.

From 1157-1539 the Augustinian canons lived and gardened in this hidden paradise. In the 18th century woodland gardens were created on either side of the Abbey with woodland walks leading to walled gardens, built to be sheltered from the worst of the Atlantic gales. In the late 19th early 20th century Gertrude Jekyll was a frequent guest at the Abbey and was instrumental in helping Marion, Lady Stucley, create the intimate paths and small terraces of the Baronet's Bog Garden, Victorian Fernery and Camellia Garden.



## WHIMPLE CHURCH

<http://churches4all.org/>

### How would you feel if your parish church shut?

Hello my friends,

As many of you will know our parish is part of something called a mission community, that is a group of churches sharing a priest and working together, up until the beginning of April that was the Churches4all mission community composed of four churches. From the 1st of April it became the East Clyst Churches composed of eight parishes containing ten churches sharing three priests.

Having been the priest in charge of the former I became the rector of the latter, with a team vicar in Rockbeare and a full-time minister dedicated to Cranbrook as part of my team. When I was interviewed for the post, I explained that when the new group of churches was formed, I wanted to have honest conversations with each of them to consider the challenge and opportunities for the future. As part of that in the last six weeks I have spoken regularly to our congregations about some of the elephants in the corner of the room so many folks have been ignoring in the Church of England for, well, probably decades.

That is what this article is about.

What are these? Well, many rural churches have been struggling for years, numbers attending have been shrinking, finances are stretched, volunteers keeping them going are exhausted. Some of them, probably quite a few, are going to close.

This is a trend which in many churches started a long time ago, Covid 19 is speeding up the cliff edge many churches are heading for.

Why is this? There is no one easy answer, but here are a few possible ones:

People used to feel obligated to go to church, now they do not (this is a good thing).

People have a whole range of other things to do on a Sunday morning.

People's spirituality and the way they express it has changed, most people in the UK still believe in some sort of higher power, contrary to what some strident atheists might have you believe, but less want to conform to a set religion.

The Church of England has done an excellent job of offending vast numbers of people and mishandling several crises.

The Church is seen as out of touch and boring (and often can be). The hymns were written hundreds of years ago, the prayers in a language which a lot of people struggle with and people don't fancy the idea of watching a man in a dress wandering around a cold draughty building with uncomfortable seats on a Sunday when they could be having a lay in.

We can debate the reasons, but the evidence is plain, most rural churches, even those which are still doing reasonably well, have seen numbers steadily decline for decades.

Moving on from this there is a 'bigger picture' issue also developing: the Church of England has a serious cash flow problem, they simply cannot afford to sustain the number of full-time paid clergy at current levels. Even now we rely heavily upon retired colleagues and unpaid part time (or self-supporting) ministers plus a number of other volunteers and lay leaders to keep the show on the road. The pressure on diocese finances results in mission communities (groups of churches) growing larger and larger, with priests having more and more to cope with.

Many people imagine that every now and then their local church will raise the thorny subject of money but somehow there is some pot of cash in the national church somewhere. Money will be fed down to the parish church to keep it open. Well, there isn't, and it won't; parish churches are paid for partially out of the fees for special services like funerals or weddings (some of this money also goes to the Diocese to pay for priest's wages and back room staff and services) and out of fund raising (fetes and coffee mornings), but most of it comes from the pockets of the folks who come on a Sunday. So, churches do shut and a lot more will be shutting over the coming years.

Now you may say, 'good, it is a load of old rubbish, so good riddance, what has the Church of England ever done for us?'

That is a view you are entitled to take. Of course, in a recent independent audit the value of the churches works, in both material terms and wellbeing generated was put at over twelve billion pounds per year, which includes 35,000 projects before the Covid-19 pandemic, including 8,000 food banks, 4,000 parent-toddler groups, 5,000 lunch clubs or coffee mornings, 2,700 community cafes, 2,400 night shelters and 2,300 breakfast or holiday clubs for children. That is a financial benefit to society funded by the church. This doesn't include the end of life care it provides, the pastoral visiting to the elderly, lonely, bereaved or sick, or the colossal investment the church has in four thousand seven hundred schools which educate over a million pupils. Even so, you might feel you are not too bothered if your parish church closed.

On the other hand, you may feel that it is a bit of a shame, you quite like coming to church for services like Christmas, Easter, Mother's or Father's Day or the idea that the old building might still be there for your wedding, to baptise your children or grandchildren and maybe even for your funeral.

Or, you may never have considered that your church could shut and be sold and this might come as a bit of a shock.

So why am I telling you this? Well, I want honest conversations about the future of the churches in our mission community, all of them. At one we have already started considering the possibility of it becoming a festival church (only opening for six big Christian days per year), or, shutting completely.

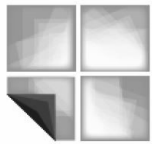
*Continued overleaf*

*Continued*

Is Whimple church going to shut? Not any time soon, it has a small to medium sized congregation who work incredibly hard to keep it open. The building is in good nick and running services and events which serve the parish, folks who are trying to respond to what the community needs and make plans for the future. This includes considering how we can change our building to make it fit for purpose for the twenty first century; warm, dry, accessible for everyone regardless of their mobility with decent toilets and space which can be flexible.

I tell you this not to frighten you but because I want this to be a rallying call to all of you who love our churches and believe, for whatever reason, they are worth cherishing. I want folks to understand both what it takes to keep the church open but also the real risk of it closing one day if the last decades trajectory continues. I tell you this not to illicit money or sympathy but so that everyone can make an informed choice of how they view the church and it's role in our parish not just today but for tomorrow and beyond. Feel free to email me [marckerslake@hotmail.co.uk](mailto:marckerslake@hotmail.co.uk) any questions or comments.

God bless. Rev Marc.



## **PAUL LAMBELL WINDOWS & DOORS**

*Windows / Doors / Conservatories  
Facias / Guttering / Cladding  
Full Repair Service*

- Free quotations.
- Top Quality A Rated Windows.
- Over 25yrs Experience – local tradesman offering top quality workmanship.
- Repair service includes – Broken Locks, Handles, Window Hinges, Misted Sealed Units etc
- Extremely courteous and friendly service.

**07983 224679 \* 01404 850546**

**email: [info@plwindowsanddoors.co.uk](mailto:info@plwindowsanddoors.co.uk)**



Shelley  
Spry



## Tale Valley Care

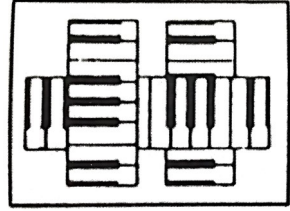
Unit 6 Lees Meadow  
Talatun EX5 2SG  
info@talevalleycare.co.uk  
07873 240459

Providing Personal Care Services in your home

**Other services offered include:**

Washing  
Ironing  
Shopping  
Driving to appointments  
Chaperone

NVQ qualification in lead adult care  
Insured and DBS checked



## Emma Palmer Music Tuition

I teach piano in Whimble and also online.  
From 7yrs upwards, no upper limit!  
Fun and instructive lessons.  
Competitively priced, various lesson lengths  
available, daytime and after school slots.  
Contact me for more details:  
**01404 823083**  
empalmusic@gmail.com



# PF&A

PREMIER FENCING & ASTRO

**QUALITY FENCING & ARTIFICIAL GRASS  
AT PRICES YOU CAN AFFORD**

**EXETER • 01392 341 315**

**EAST DEVON • 01395 205 563**

info@premierfencingandastro.co.uk

www.premierfencingandastro.co.uk

FENCING ■ DECKING ■ GATES  
ARTIFICIAL GRASS ■ LANDSCAPING

# JULIAN WILSON

## Electrical Contractor

1 Higher Woodhayes  
Farm  
Whimble

Tel: **07977 753158**

Looking after your trees and  
gardens for over 25 years

# Sid Valley Tree Surgery & Landscapes

TREE SURGERY  
HEDGE CUTTING  
STUMP GRINDING  
GARDEN CLEARANCE  
FULL LANDSCAPE SERVICE  
FREE QUOTATIONS



Tel: **01395 519856**

Mobile: **07880 797613**

[www.sidvalleytreesurgery.co.uk](http://www.sidvalleytreesurgery.co.uk)



## James Brewer Quality Made Joinery

Ellicombe House  
Cutteridge Lane  
Whitestone, Exeter EX4 2HE  
Tel: 07896 530640  
Fax: 01392 811604



Email: [jbrewer2410@hotmail.co.uk](mailto:jbrewer2410@hotmail.co.uk)

*(not VAT registered)*

*Please contact me for all  
your carpentry and joinery  
needs, i.e. doors, windows  
and furniture, I will be  
pleased to give you a  
quotation.*

## darren peek plastering contractor

plastering and rendering,  
dry-lining, coving,  
cob and lime specialist,  
floor-screeds,  
damp-proofing.

mobile 07786514172

tel 01404 41211

[darrenpeek2@aol.com](mailto:darrenpeek2@aol.com)

# New Business in Whimple!

## SEAM HABERDASHERY

Before I introduce Seam Haberdashery to you all, I need to thank Marianne and Malcolm at The Hive for all their kind and generous support over the years and without their help, this little shop would not be possible. Believe it or not this shop has evolved in my head for the last 25 years, so thank you both for giving me this opportunity and I am truly grateful.

Seam Haberdashery will open at The Hive in June 2021, and will sell a mixture of new and vintage fabrics, yarns trimmings and lace as well as sewing and knitting kits, buttons and buckles. All my products are sourced locally and my knitwear is carefully made by hand in Devon. You will be able to either buy items for your own projects or select a hand made gift for yourself or a loved one. You can also buy online at [www.seam.network](http://www.seam.network)

I have lived in Whimple for many years and I have a degree in Fashion Design, I currently teach Fashion and Textiles at Further and Higher Education in Devon. I have always loved to make and like many designer/ makers I know that making is essential to my wellbeing and completely absorbs me. As a teacher, I have tried to teach my students not only the skills required for their chosen career but also to think about the sustainability of fashion and the value of making beautiful garments and accessories that can be valued and treasured for many years. As we emerge from this current Lockdown on June 21st, I will be offering Knitting, Sewing, Embroidery and Printing/ Dying Workshops and you will be able to learn or improve a new skill. All workshops will be advertised in the shop or online and I look forward to meeting many of you soon. I also want to encourage making, so if you are a local designer/ maker and would like to sell your work or offer a workshop, please get in touch. As we approach the summer months, hopefully we can use some of the beautiful outdoor spaces in Whimple and I will make sure all Workshops are Covid safe.

### W.A.R.T.S

DATES FOR YOUR DIARY 2021:



**Monday 25th October**

We would kindly remind you:

**ALL ORDERS FOR OIL SHOULD BE PLACED AT LEAST  
ONE WEEK BEFORE THE ABOVE ORDER DATES!**

(Minimum order: 500 litres. Please allow a further 10 days for delivery)  
All existing (and potential new) members with [access to e-mail](#) may contact **Graham Batten** with their order/\*registration at [gkbatten@btinternet.com](mailto:gkbatten@btinternet.com) .  
If you are without email you may call 01404 823317

\*Registration to include: Name/Address/Postcode & Telephone Number



As we start the summer term things are gradually returning to a new sense of normal. We are tentatively planning events like sports day and our summer fair, as well as organising school trips and residential. Fingers crossed all these things can go ahead as planned.

Our building works have all been completed finally so our Devon Lady mobile classrooms all look really smart now. Our PTA have been working hard to develop the garden behind these mobiles; the younger children are now starting to help weed and plant with some parent volunteers.

Children in Key Stage 2 have been benefiting from using our cleared orchard area, many have been involved in shelter building as well as other exciting tasks. The PTA also kindly organised an Easter Egg Hunt for each class – this was greatly appreciated by all!



Pupils in Beech Class have been busy learning more about how to survive the climate, plants and animals of Amazon rainforest. They used their art skills to make Jungle Journals.



Oak Class have been looking at Florida in their Geography lessons and everyone created a fantastic Florida booklet, filled with information and data!



Design Technology saw children in Ash Class designing and making their own moving pictures. Initially, children undertook a number of activities to develop their understanding of how things can be made to move with their pictures so this could enable them to use the most appropriate one for their chosen design.



The day in Elm usually starts with 'Funky Finger' activities - these activities are designed to help support fine motor skills which helps to develop their fingers to aid writing. They also have lots of other benefits including personal and social skills but more importantly they are just great fun! Lacing superheroes, threading pipe cleaners, writing in the sand and using nuts and bolts - just a few of the things they have tried recently.

On the final day of the spring term, we held our World Book Day and the children all came to school dressed as their favourite book characters.



The weather held and we were able to hold an outdoor assembly so the children could actually see each other and their costumes. It was a lovely way to end the term.



## *Longfield Cattery*

**heated single and double chalets  
personal care and attention**



***(now also looking after small animals)***



**01404 822275**

**stephen@longfieldcattery.co.uk**

**www.longfieldcattery.co.uk**

**Longfield ~ Church Road ~ Whimple ~ Exeter ~ EX5 2TF**



# Billy Bloomfield Whimble Handyman

Window Cleaning, Lawn Cutting, Strimming, Hedge Cutting, Garden Clearance, Shed Erecting, Fence Erecting, Erection of Wooden Lean To, Fence Staining, Patio Laying, Patio Cleaning, Decking Cleaning, Decking Assembly, Jet Wash Driveways and Paths, Painting (Inside & Out), Gutter Cleaning, Gutter Renewal, Facias and Roof Repairs (10 Years Roofing Experience)



Home: 01404 822345  
Mobile: 07759 466671

## PEK BUILD

### BRICKWORK&MASONRY

New build-extend-refurbishment-renovate  
alteration-barns-hard landscape-repairs  
Your friendly, reliable local tradesman

No job too small.

Telephone Mark on

822913 or  
07817097721

Email - [mproberts@live.co.uk](mailto:mproberts@live.co.uk)

3 The Signals  
Talatun Road  
Whimble  
Exeter  
EX5 2QL



City and Guilds  
Qualified

## J S Painting and Decorating

High Quality Decoration  
and Protection

For a free quotation call Jan on:  
0758 852676 or 01404 821953







# Otter Valley Veg

## FRESH FOOD DELIVERY

WE ARE PROUD TO PRESENT OUR SELECTION OF FRUIT & VEG BOXES  
Packed full of beautiful seasonal fresh fruits and vegetables  
and delivered straight to your door.

### OUR FRUIT & VEG BOXES

£20

#### SMALL

2 Baby Gem Lettuce  
200g Beetroot Cooked  
1kg Carrots (LOOSE)  
1 Cucumber  
1 Garlic Bulb (LARGE)  
750g New Potatoes  
300g Mushrooms (CUP)  
1kg Onions (WHITE)  
1 Red Pepper  
1 Yellow Pepper  
Spring Onion Bunch  
1kg Vine Tomatoes

£25

#### MEDIUM

2 Baby Gem Lettuce  
200g Beetroot Cooked  
500g Broccoli  
1kg Carrots (LOOSE)  
1 Cucumber  
1 Garlic Bulb (LARGE)  
200g Green Beans  
750g New Potatoes  
2 Jacket Potatoes  
300g Mushrooms (CUP)  
1kg Onions (WHITE)  
225g Mixed Salad Leaves  
1 Red Pepper  
1 Yellow Pepper  
Spring Onion Bunch  
1kg Vine Tomatoes  
1kg Bananas

£30

#### LARGE

1 Avocado  
2 Baby Gem Lettuce  
200g Beetroot Cooked  
500g Broccoli  
1kg Carrots (LOOSE)  
1 Cucumber  
1 Garlic Bulb (LARGE)  
200g Green Beans  
750g New Potatoes  
2 Jacket Potatoes  
300g Mushrooms (CUP)  
1kg Onions (WHITE)  
225g Mixed Salad Leaves  
1 Red Pepper  
1 Yellow Pepper  
Spring Onion Bunch  
1kg Vine Tomatoes  
4 Braeburn Apples  
1kg Bananas  
4 Conference Pears  
4 Satsumas

- FREE delivery on orders over £20
- Order by 3pm for next day delivery
- Add to your box or create your own
- Full list of produce available online
- Orders taken 7 days a week

☎ 07933 515 524

✉ [orders@ottervalleyveg.com](mailto:orders@ottervalleyveg.com)

[www.ottervalleyveg.com](http://www.ottervalleyveg.com)



# Grandisson

## FIRES, FIREPLACES,



## STOVES



## & DECORATIVE PLASTER

FREE ADVICE AND SURVEYS  
EXPERT AND QUALIFIED FITTING BY OUR OWN FULLY SKILLED TRADESMEN  
VISIT OUR LARGE SHOWROOMS

GRANDISSON, 26-28 FINNIMORE IND. EST, OTTERY ST MARY, EX11 1NR  
TEL: 01404 812876

## Antony Taverner Oil Fired Plumbing & Heating

Oil fired boiler service and repairs  
Oil fired Aga and Rayburn service & repair  
New Oil and Gas boiler installations  
New Oil tank installations  
Full heating installations  
Full bathroom installations  
All aspects of plumbing carried out  
Un-vented Cylinders serviced and installed  
18 years experience  
Fully insured  
Oftec and Gas Safe Registered



Hamelin  
Winter's Lane  
Ottery St Mary  
EX11 1BG

Phone : 01404 814582  
Mobile : 07834903343  
E-mail : antonytav@gmail.com



# Organisations in Whimble

<b>Devon County Councillor</b> (iain.chubb@devon.gov.uk)	
Iain Chubb	07932 459595, 01297 35468
<b>East Devon District Councillor:</b>	
Richard Lawrence	07703 350285
<b>Parish Council</b> (whimpleparishcouncil@gmail.com)	
<i>Chairman:</i> John Griffiths	823480
<i>Clerk:</i> Clair Rayner	812570
<b>Primary School</b> (admin@whimple-primary.devon.sch.uk)	
<i>Headteacher:</i> Carole Shilston	822584
<i>Chair of Governors:</i> Linden Best	822595
<b>Friends of Whimble School (FOWS)</b> (whimplefows@gmail.com)	
<i>Chairperson:</i> Carla Whitaker	07976062725
<b>St. Mary's Church</b>	
<i>Parish Priest:</i> Rev. Marc Kerslake	822525
<i>Impact Cell:</i> Helen Bowker	823193
<b>Book Group</b>	
Tanya Mooney	823326
<b>Cricket Club</b> (jameswoollam@gmail.com)	
<i>Booking Secretary:</i> James Woollam	07989 234372
<b>Football Club</b>	
<i>Chairman:</i> Victoria Kendrew	07966 550260
<i>Secretary:</i> Lee Wheaton	077341 52120
<b>Front Row Club</b>	
<i>email:</i> frontrowclub@gmail.com	
<b>History Society</b>	
<i>Chairman:</i> David Rastall	822486
<i>Secretary:</i> Roger Smith	822244
<b>Mothers Union</b>	
Margaret Burrough	822257
<b>Over Sixties Club</b>	
<i>Chairman:</i> Arthur Iball	822905
<i>Secretary:</i> Beryl Iball	822905
<b>Pre-School &amp; Toddler Group</b> (www.whimplepreschool.com)	
<i>Chair:</i> Joe Pearce	823512
<i>Information:</i> Jo Sibley 07794 652549 or admin@whimplepreschool.com	
<b>Recreation Trust</b>	
<i>Knowle Cross Sports Ground:</i> Roger Smith	822244
<b>Scout Group</b>	
<i>Group Scout Leader (and Marquee Booking):</i> Alex Spry	822844
<b>Table Tennis Club</b>	
Chris Beer	07787 544192
<b>Tennis Club</b>	
<i>Secretary:</i> Viv Brown	07876 653264
<i>Treasurer:</i> Glenn Starkey	07967 698600
<b>Victory Hall</b>	
<i>Chair:</i> Maria Wallis	823992
<i>Secretary:</i> Di Wilkins	758459
<i>Booking Sec:</i> Ali Tierney	822724
<b>Whimble and District Gardening Club</b>	
<i>Chairman;</i> Paul Wilson	822744
<b>Whimbletons</b>	
Cathy Bartlett-Horwood	823944
<b>Womens Institute</b>	
<i>President:</i> Di Eden	821992
<b>Whimble and Broadclyst Young Farmers:</b>	
<i>Vice Chair:</i> John Down	07580 938109

Editor

Production

Bob Scanlan 822262  
bob.scanlan@eclipse.co.uk

Sally Wilde 823246

Advertising

Ed Hitchcock 01392 427982  
edhitch@btinternet.com

Community Diary

Delivery

Cathy Sharkey 822939

Treasurer

Miles Leonard 822415



**NATURAL TREATMENTS  
LOG CABIN IN WEST HILL  
07866 528567**

**15%OFF ANY TREATMENT WITH THIS ADVERT**

**SPECIAL OFFERS ARE AVAILABLE EACH MONTH**

**A FULL RANGE OF BEAUTY AND HOLISTIC  
TREATMENTS ARE AVAILABLE**

**PLEASE TEXT OR PHONE FOR A TREATMENT LIST**



## Living and Selling Locally

We offer straight forward, straight talking professional advice with over 30 years of local knowledge.

If you are considering selling or letting your property and would like some expert advice on the current market conditions, please give one of our offices a call today for a free up-to-date market appraisal.

Call for a free valuation today.

### **hallandscott.co.uk**

Ottery St Mary  
15 Broad Street  
Ottery St Mary  
Devon EX11 1BY  
ottery@hallandscott.co.uk  
01404 812000

West Hill  
Potters Country Market  
West Hill  
Devon EX11 1TY  
westhill@hallandscott.co.uk  
01404 811839

Sidmouth  
113 High Street  
Sidmouth  
Devon EX10 8LB  
sidmouth@hallandscott.co.uk  
01395 578791

London  
121 Park Lane  
Mayfair  
London W1K 7A  
london@hallandscott.co.uk  
020 76294141



**rightmove** 

 **nTheMarket.com**

# the Jack *in the* Green

## COME ON IN!

It's great to be open and back doing what we love once again.....it's been far too long!

Try out our new menus and new furniture - the welcome is as warm as it always was.

Enjoy a selection of freshly baked cakes and coffee each morning, our new Friday Night 'Canapes & Fizz' and 'Saturday Brunch' - all are a great chance for a get-together.

A Jack gift voucher is the perfect present for Father's Day..... and birthdays! If you'd like one please get in touch and we'll do the rest.

See you again soon.  
Paul, Judy & the team

[www.jackinthegreen.uk.com](http://www.jackinthegreen.uk.com)

Tel: 01404 822240