

# *Whimple News*

---



---

**April/May 2008**

---



QUIZ NIGHT EVERY OTHER  
SUNDAY

Starts at 8.30pm  
EVERYONE WELCOME!

# The Thirsty Farmer

WHIMPLE, EXETER, DEVON, EX5 2QQ

Telephone: 01404 822287

## TRADITIONAL HOSPITALITY AT ITS BEST

Varied A La Carte Menu changed daily  
alongside traditional 'Farmers Favourites'

—  
\*Great Selection of fine Wines\*

Open all day Friday, Saturday & Sunday

### MUSIC DATES

Oceans 6: 18th April

Kiss This: 2nd May

Mad Jack: 23rd May

# WHAT'S ON IN WHIMPLE

## April

- 8th Over 60's Speaker with Slides, M&E Squires – Gardens and Flora of New Zealand
- 10th Blood Donor Session, Feniton Primary School, 1.30 - 3.15pm & 5.00 - 7.15pm
- 11th Bingo, Cricket Club, 7.30pm
- 15th Over 60's Bingo and Committee Meeting
- 19th Soup and Sarnie Lunch, Victory Hall, 12.00 noon – 1.30pm
- 22nd Over 60's Coach Trip to Wells and Glastonbury
- 26th Cardboard/Plastic Bottle Volunteer Collection, Car Park, 10.00 -11.00am
- 26th Village Litter Pick, meet in the Square, 9.30am
- 28th Parish Council, Annual Parish Meeting, Victory Hall, 7.00pm
- 29th Over 60's Whist/Scrabble/Dominoes etc
- 30th Tennis Club Taster Evening (see Tennis Club page)

## May

- 6th Over 60's AGM
- 6th Wasters of Whimple Meeting (see article)
- 16th Murder Mystery, Victory Hall, 7.30pm
- 16th Bingo, Cricket Club, 7.30pm
- 17th Barn Dance in the Blossom, 1, Higher Woodhayes Farm, 6.00pm
- 18th History Society Trip to Dartmouth & Coleton Fishacre, 9.00am – 7.00pm
- 19th Parish Council AGM, Victory Hall, 7.00pm
- 24th Soup and Sarnie Lunch, Victory Hall, 12.00 noon – 1.30pm

## June

- 7th 'Plan B' at the Cricket Club
- 13th Bingo, Cricket Club, 7.30pm
- 14th Church Fete, Hindstrete, Church Road, 2.30pm
- 20-22 English Country Music Weekend

## July

- 10th Tennis Club Summer Social, 6.00pm – 9.00pm
- 12th Village day - School Fayre, Fun Run, Fancy Dress and Grand Draw

**PETER SALTER A.I.R.T.E.**

**MOBILE MOTOR ENGINEER**

(Member Institute of Road Transport Engineers)

Servicing & M.O.T. Preparation  
Engine Overhauls & Bodywork Welding  
Cars & Commercial Vehicles

**Telephone: Whimble (01404) 823054**

# Talaton Inn

SUNDAY LUNCH - DAILY SPECIALS  
BAR MENU AND SNACKS  
RESTAURANT OPEN TUESDAYS TO  
SATURDAY EVENING



**Good Ales, Good Food  
Pop in and say Hello**

**Tel: 822214**

## Ed the Ed

Thanks and congratulations to Peter Bowden for a very well run meeting about the Future of the Village Shop – see page 12 for a full report. I know that Peter had put a lot of effort into this over the past few weeks, and I know that he was delighted and overwhelmed with the show of support that night. Thank you Peter!

I would echo Peter's thanks to both Fred and Graham Fowle for all the years that they have run the village shop. We wish them well for the future.

You will read that we need to identify people who may need help with their shopping after 31st March; please contact David Rastall (822486). If you know of anyone who may not be aware of this offer, please bring it to their attention.

Whilst we are on 'Thank you's, the Parish Council have given the Whimble News a generous donation towards our printing costs, so thank you to them for their support. That is what keeps us in business.

The centre spread of the History Society Committee in their PVC bondage gear had to be cancelled due to an impending court case, but we have replaced it with a far more worthy article about putting Whimble in for the Devon Best Kept Village Competition. One of the actions will be a Litter Pick on 26th April – please take part if you can, as well as identifying what you can do as individuals. All this links to the Village Plan and the underlying theme of pride in our village.

And with another seamless link in this glittering editorial (how does he do it?, I hear you cry) you will see that Sarah Pepper has reported on the great success of her recent Craft Classes in the Victory Hall. This was another action to come out of the Village Plan work which has been so well received by the East Devon District Council

If you have a need to contribute to this august periodical (well actually it will be June/July – see - clever play on words there, gentle reader) please email it directly to Arkwright Scanlan on [bob.scanlan@eclipse.co.uk](mailto:bob.scanlan@eclipse.co.uk), or leave it with Jim and Alison at the PO by Monday 19th May. And well done to them for being so positive and volunteering help with prescription collection at the PO, as well as selling papers and milk.

This edition has an advert for the Whimbletons Murder Mystery on 16th May...as ever the mystery will include the cast as well as the audience! Get your tickets early before they hit Ebay. And the day after it is the Blossom Dance, so save your energy for that as well. The current Mrs H and I are already practising our steps with a pork roll in one hand and a pint in the other.

## Ed H



## **UNISEX HAIRDRESSERS**

**Advanced Colour Courses with L'Oreal and Wella**

**Open: Tues - Saturday: Late Night by appointment.**

**Free parking by kind permission of the Thirsty Farmer**

**TEL 01404 823400**

**New Inn Cross, Whimble. Devon. EX5 2TS**

# Liberte holidays

**...Your French connection South of France:**

**Long lazy sunny days in a beautiful French villa, with communal pool right on the Mediterranean coast.**

Sleeps up to six and includes patio garden with barbecue. Satellite TV, washing machine, bike and roller-blade hire, wind surfing, kite surfing and sand sailing, as well as horse riding and go carting and on the edge of a nature reserve.

Situated near all major airports (Flybe, Ryanair, Easyjet) and airport collection available. Auto train to Narbonne from Calais; 10 min drive from motorway. Prices from £70 p.p./during July and August (price based on 6 people sharing). Also countryside B & B available and assistance with house searches and relocation available.

Please visit: **[www.liberteholidays.com](http://www.liberteholidays.com)** or phone Janine or Paul on

**00-33-468-44-12-08**



# Whimble Post Office News



Who would have thought that even now we are still not too sure if we are still to remain open! We really felt that by now the agonising wait would be over, but as I write this article we are still waiting.

A friend of ours from a nearby village has been told, but has been sworn to secrecy to keep quiet about the decision, so perhaps its just as well we are being left to 'last' as I'm not sure for how long we could hold out.

A decision that has been made though is the sad closure of Whimble Stores; how we will all miss it. Due to the uncertain future of the Post Office we have been cautious to commit to expanding the products that we currently sell, however we have been making enquiries into the possibility of selling newspapers, and although we will be selling the Express and Echo and the Western Morning News, the Daily Nationals will need to be pre-ordered. This is all due to the kind offer from Marion Daniels to help us out here. As I write this article, we are investigating the possibility of selling milk, watch this space, or perhaps I should say the Post Office Window for updates.

Those of you who currently are prescribed medicines from Coleridge Medical Centre will now be able to collect them from us, as well as those from Pinhoe Surgery.

We would like to remind you of our opening hours and to ask you kindly not to ring outside of these hours on Post Office business.

Mon,Wed,Thur,Fri 9.00am -12.30pm 1.30pm—5.30pm  
Tues 9.00am -1.00pm  
Sat 9.00am -12.30pm

We are always closed on Bank Holidays.  
Thanking you all for your continuing Support.

**Jim & Alison**





**LOWER SOUTHBROOK FARM**  
**Holiday Cottages**

Southbrook Lane  
Whimble  
Exeter  
EX5 2PG  
Tel:01404 822989


*"Enjoy the peace and quiet of the Devon countryside .... space for the children to play"*



**English Tourist Board APPROVED**

**Proprietors**  
Angela & Stuart Lang

Central Heating  
\*  
Colour Television  
\*  
Swimming Pool  
(Heated May to Aug)



Camping & Caravaning Club Contributor Site

Summer Holidays  
\*  
Winter Breaks



WEST COUNTRY TOURIST BOARD MEMBER

# FROM MY WINDOW IN THE SQUARE

Edith Marie-Louise Grout

The nicest day in all the year  
Is the one which is not really clear  
Whether it should be cold or hot  
Whether it should be wet or not  
The day you sometimes get in April  
With little bits of everything  
The day that tempers hard precision  
With just a touch of indecision  
In fact the nicest day you will find  
The one that can't make up its mind

The nicest day is a bit like serendipity, the faculty of making happy and unexpected discoveries by accident. It is one of the most delightful feelings. You can truly say that March came in roaring like a lion and daffodils took the wind of March with beauty. A month packed with festivals and events of all sorts. St David's day, patron Saint of Wales is the only Welsh Saint to be canonised and culted in the Western church. Mothering Sunday is a church festival which always comes on the fourth Sunday in Lent and is therefore a movable festival. On that day mothers are presented with modest posies made up of garden flowers, a lovely historical celebration going back to the 16th century. How things have changed and get confused with Mother's Day imported from America where it is celebrated on the second Sunday in May and has become over-commercialised. The modest little posy has been replaced by expensive bottles of perfume or beauty products, luxury boxes of chocolates and bouquets of flowers from the florist. Palm Sunday in Devon has seen the come-back of Christ riding in on a donkey. Then Glorious Easter Day glowing with joyous faith. It brings with it the start of summer time and hope for warmer sunny days. In our village it was also marked by the closure of our corner shop after eighty years. It should never have happened. What a great number of people do not realise is that Victor and Marion Daniel have run a very successful and most friendly service with a smile for thirty nine years and it is still going strong. It is not only a milk round with bottled milk (no throwing away of plastic containers), but they have a comprehensive list of goods. Fresh and wholesome fruit and vegetables, soft drinks, kitchen essentials, garden compost and food for the birds all delivered to your door. What a service!

Proverbially the weather in April has always been important to farmers. Hence such sayings such as "April wet, good wheat", or "April showers bring forth May flowers". Primroses are the most evocative of spring flowers. Indeed so indissolubly linked are Spring and primroses in our subconscious that it comes as a shock to me to have cushions of primroses scattered around the garden all winter and made each day a nice and joyous one.



The display of crocuses and daffodils in our lovely Square have been another source of pleasure thanks to the vision and hard work undertaken by the Whimple Village Produce Association members. It is really the fairy month of making mirth, the early gladder of the earth. How delightful to wander around the Square and see a crowd, a host of golden daffodils by the babbling brook under the golden Linden tree, birds singing and bees dancing in the breeze. In my garden the whistles and compains of the winds through the trees often mingles with the sweet and subtle scent of violets and lilacs. I wonder what parfumiers sell, be it Chanel, Coty, Yardley or Houbigan, whether they can compete or capture the natural and unique fragrance of a garden or the perfume of a honeysuckle after a shower of rain in a Devon country lane.?

If I could dip my pen and write  
In words of coral pink and white  
If I could trace in simple line  
The secret of some strange design  
A tapestry of living green  
It might be possible for me  
To pen a poem that would be  
As lovely as the apple tree

I can't think of anything more wonderful in May than one of our local orchards in full bloom with cattle grazing peacefully and lambs gambolling joyfully. I so miss my long walks with my faithful airedale, Mister Blaise. Everyday was a voyage of discovery finding wild orchids, four-leaved clover, butterflies and spotting all the great assortments of birds singing sweetly perched on branches of pink and white blossoms. What a blessing I have such a vivid and photographic memory and those pictures never leave me. In March we long for April, in May we long for June but please don't be in such a hurry, it will be gone too soon.

The merry month of May gets off with a festive start with May days symbolising the turning cycle of the year and ushering in summer. Rogation Sunday is still celebrated in the countryside when priests go into the fields to bless the crops, the cattle, and the trees. May is the month when bluebells carpet around the trees in the Square and the local woods; Buttercups in the meadows, and the hedgerows are festooned with hawthorns and crab apple blossoms. I have a superb crab apple in my garden which is my pride and joy. Nesting activity all around the garden is at its peak. Birds seem to prefer hedgerows for nesting to trees as there is more privacy and cover for their young ones. What a joy to hear the dawn chorus again. I am sure that many great composers have been inspired by the songs of birds - and many poets too.

Bad little boys do incredible things  
But bad little sparrows are equally wrong  
When spring has arrived they come hopping along  
And just each crocus is jolly and gay  
They pick all the petals and throw them away



### **The Veterinary Clinic, Whimple**

Consultations by appointment. at various times throughout the day  
We also offer routine surgery and dental treatment.

For an appointment and for all veterinary enquiries,  
please call the surgery on 01404 823230.

**Now open all day!!!!!!!**

**Opening Hours:** Monday and Wednesday: 8.45am - 7.00pm  
Tuesday, Thursday and Friday 8.45am - 5.45pm  
Saturday: 10.30am - 12.00noon

**24 hour emergency service 01404 823230**

**Vale Vets - The Vets Your Pet Would Choose**

*West One*

**Hair Design  
01404 814 913**

**For Ladies and Gentlemen**

**3, The Old Village Hall, West Hill Road, West Hill,  
(Nr West Hill Garage) Free Parking**

Ladies cuts	from £8.00
Men's cuts	from £6.50
Children	from £5.00

Our qualifications include Hairdressing NVQ 1 & 2  
Diplomas in: Toni & Guy advanced Technical Colouring, Colour Correction,  
L'Oreal Colour Keys, Techniques 2000, Cutting and Perming.

**Opening:** Monday, Wednesday, Thursday, Friday & Saturday.

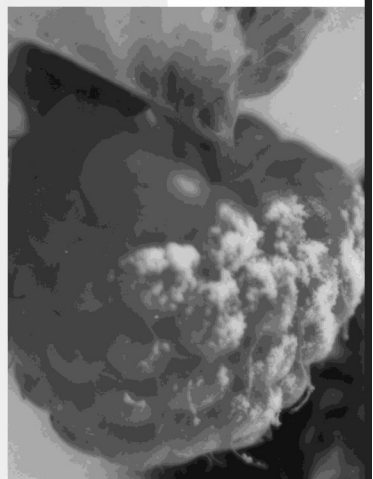
For an Appointment Please call **01404 814913** or Call in for Free Consultation.

# whatever the occasion

The Jack In The Green Inn, one of Devon's finest restaurants, is pleased to support the village Magazine The Whimple News.

Our award winning food is prepared with the finest ingredients by our uncompromising chefs.

So from bar snacks to a la carte our sumptuous meals suit every occasion and celebration.



*...we'd like you to come and see us*

THE JACK IN THE  
GREEN INN

Rockbeare, Near Exeter, Devon EX5 2EE.  
Telephone: 01404 822240 [www.jackinthegreen.uk.com](http://www.jackinthegreen.uk.com)

# VILLAGE SHOP MEETING THURSDAY 27th MARCH 2008

by Ed H

Since the announcement that the village shop was going to close, Peter Bowden, in his role as Deputy Chairman of the Parish Council, had been talking to many people around the village about what the future holds. He called this meeting to assess the level of interest from the village for a shop. We had a magnificent turnout of some 200 villagers, with standing room only in the Victory Hall, on Thursday 27th March. It was great to see such a number, and that they represented all ages throughout the village – well done Whimple!



Peter gave a summary of 'where we are now' – it was fact that the shop was closing on 31st March; it was still for sale via Halls the Estate Agents at £550,000 for the shop and accommodation; there had been no serious interest expressed by any buyers; East Devon District Council intend to keep the 'retail premise' option open for some time to come; any new retail interest was not bound to keep the shop as a grocers; although East Devon District Council are prepared to consider an application to divide the shop from the accommodation, there are no plans to do so at present.

He made the very good point that we would be wasting time and energy bemoaning the fact that the shop was closing – it was a business decision by the owner, and that had to be respected. We had to look to the future. When polled, there was unanimous support for the concept of a village shop, and a large number were prepared to get actively involved in a project to create and run it.

The most immediate need was to help those without transport, or easy access to transport, to reach a grocer's shop after 31st March. David Rastall had volunteered to co-ordinate this part of the project. So if you need such help, please contact David on 822486 or leave a note at the Post Office. David will work with the 40 or so people who volunteered at the meeting to get involved. Marion Daniel is also happy to offer help where she can – see the advert opposite.

Another 40 people put their names forward to join a committee to develop the shop project in Whimble. We still have an urgent need for a project leader who can pull all the strands of this shop exercise together. Peter asked for everyone's help here, to either put themselves forward or encourage others to do so.

Peter then covered what some of the options were in terms of location of a new shop and all these need to be investigated. There are two garages behind the New Fountain Inn that could be used; there is space behind the Doctor's Surgery for a Portakabin style building; inside the Church itself; and there are an unknown number of front rooms that could be converted to a shop of some form.

I gave a short summary of a conversation I had with the Treasurer of the Talaton shop, which was very useful in highlighting things that had worked for them as they set their shop up, some 14 years ago. My main point was there is a specific organisation that provides help for villages in our situation – ViRSA (Village Retail Services Association), with community retail advisors, publications, a directory of 170 community shops and a website with 76 valuable links to agencies that could help us. We are not alone – there is an army of help out there!

So to summarise – we are establishing how many people need help with their shopping after 31st March, and how to connect them to the volunteers; we have names for a committee, and know where to go for help in this project; we need one person at the head of this project to co-ordinate these efforts, to provide some focus and leadership on behalf of the village. Is it you?

For all your daily requirements

of

**MILK, CREAM, EGGS, FRUIT JUICE**

**ORGANIC, SOYA & GOATS MILK**

**NEWSPAPERS & MAGAZINES**

**POTATOES, FRUIT & VEGETABLES**

also

BIRD FOOD REQUIREMENTS AT COMPETITIVE RATES

**Delivered to your door**

SPIT ROAST SERVICES ALSO AVAILABLE

Please contact

**VICTOR & MARIAN DANIEL**

Summerbridge, Whimble, Devon

**01404 822458**



## LOCAL COUNCILLOR ARTICLES FOR THE WHIMPLE NEWS

I have been trying, for the last four editions, to get Andrew Dinnis, our East Devon District Councillor, to submit an article about what he is involved with, thus keeping the Whimple electorate updated with his activities.

I know that Roger Giles in Ottery uses the Ottery Gazette very successfully and it would be great if Andrew could take a leaf out of Roger's book here. I know that Andrew is involved with projects which would be of interest to us here in Whimple.

I am disappointed that Andrew has been unable to send the Whimple News anything yet. We actually spoke in Talaton last summer about this idea, and he was keen to contribute.

I find this silence ironic, as I believe his manifesto a couple of years ago, made some comment (to my memory) about if he was elected, he would not be a councillor who you only saw at election time.

I was pleased to see Andrew at the shop meeting this week where he told me that he still intends to provide the News with updates. Watch this space! **Ed H**

# Martha Mockford

## Quality kitchens at affordable prices

*manufactured and expertly fitted by our own staff  
better value for money than DIY stores*

**Also re-fronts & new worktops**

**Carpets, vinyls and wooden flooring**

Complete, friendly service from a local family business

**Hotpoint, AEG, SMEG, Franke, Blanco**



# 01404 44189



# Congratulations 'What a star'



Congratulations to Samantha Mahoney on her winning entry for the Exeter Chiefs Rugby Club competition to 'design a meal for the players'. Sam came second in this competition, against 600 other children in Devon, including Whimble School. The judges were very impressed with all the entries.

Well done

**Mum and Dad**

## **STRIDE.....STRETCH..... into SPRING.....**

### **STRIDE**

Venturing out and running through the picturesque countryside lanes of Whimble and surrounding villages is not only thinking time, whilst I train for a forthcoming half marathon, but it is also a great way to get to know your way around all the many villages and hamlets in the area.

Having just moved back to Devon from London and beyond, this is something that I have so looked forward to and now I am actually here!

### **STRETCH**

Something that has really helped me as a runner, is my yoga.

Yoga stretches out those tight muscles and keeps them free from injury. The breathing exercises are excellent in getting rid of toxins in the body and actually getting us to relax .

I am thoroughly enjoying my new yoga class, which I teach at the Victory Hall, particularly as it is a skip down the road from where I live and have so far had a very good turnout of people. So if you are starting now to think about doing something new as we change seasons and head into the loveliest months of the year, I would be delighted to welcome you to the yoga class.

### **SPRING**

Also food for thought - I am also a Massage Therapist specialising in Sports and Remedial Massage, Pregnancy Massage and Holistic Facials using Neal's Yard Remedies Products. If you would like to find out more please visit my website [www.yoga-to-go.co.uk](http://www.yoga-to-go.co.uk). Finally I would like to offer readers of Whimble News a £10 discount on any Massage Treatment that they book through April and May 2008.

**Amanda Ahl**, tel: 07876 214919 [www.yoga-to-go.co.uk](http://www.yoga-to-go.co.uk)

# WHIMPLE

The Perfect Village

“A great community, good amenities and excellent accessibility”



We have a constant stream of enquiries for property of all types in and around Whimple.

**ASK FOR A FREE VALUATION**

01404 814306

[www.redfernsproperty.co.uk](http://www.redfernsproperty.co.uk)

Tim Wright



**The Whimbletons  
Present**

**Murder**

**& the School Reunion**

a

New Murder Mystery for 2008

**WHIMPLE VICTORY HALL**

**FRIDAY 16<sup>TH</sup> MAY**

**7.30PM**

**TEAMS OF UP TO 6**

Tickets £4.50

**AVAILABLE FROM WHIMPLE P.O**

**INCLUDES SUPPER,**

**BRING YOUR OWN DRINK**

Please book by

**9<sup>TH</sup> MAY**

**TO HELP CATERING**

# DC DECKING & JOINERY

*Quality Carpentry Services*

## BESPOKE HAND CRAFTED GATES

- *FREE ESTIMATES*
- *MANY REDWOOD DESIGNS*
- *SUPPLY & INSTALLATION*
- *TOTAL SECURITY*

## CARPENTRY

- *FREE ESTIMATES*
- *KITCHENS & BEDROOMS*
- *BUILT IN WARDROBES*
- *UPVC INSTALLATIONS*

*Many years experience,*

*Fully Qualified*

*Large Portfolio*

## QUALITY DECKING SERVICES

- *FREE DESIGN & PLANNING*
- *QUALIFIED INSTALLERS*
- *TREATED MATERIALS*

## JOINERY

- *HAND MADE GARDEN FURNITURE*
- *ANYTHING THAT NEEDS TO BE MADE OR REPAIRED*

*For a friendly, efficient & professional service please contact our team*

*Telephone : 01404 822126    Mobile: 07980 889968    Email: dcd decking@aol.com*

# Whimble Victory Hall



## *Soup and Sarnie Lunch*



*12.00noon until 1.30pm  
on Saturday 19th April  
and Saturday 24th May*

*Come and Join us*

*for details ring John 823614 or Pam 822262*

**THE  
UTILITY  
WAREHOUSE**

Authorised  
Distributor



Become a member of the Utility Warehouse Discount Club and you can benefit from:

- Unlimited "free UK calls"
- The UK's best value gas & electricity
- Guaranteed savings compared to BT
- Freephone internet technical support
- Freephone customer services
- Redundancy protection
- Accidental death cover
- Exclusive membership discount booklet

**The more services you take... the more money you save!**



**£££'s cheaper...AND all your services itemised on a single bill!**

**Call your local Authorised Distributor on**

**0800 0839450**

**for full details**

# Whimble Parish Council

## Tips on Applying for Grant Funding for Organisations and Charities

Finance is available to charities, local or national groups or organisations and sometimes individuals. This is usually from:- Charities, Trusts, Grant-making foundations, Government departments, The National Lottery and schemes such as Landfill Tax and Gift Aid. The Parish Council has detailed information on how to present your case when applying for grant funding. The basic 10 points to include in your application are:-

1. Who are you? What are you there to do?
2. What are the specific objectives of this appeal or application?
3. Why is this appeal or project important and urgent?
4. What would happen if the project or appeal failed?
5. How much money is needed?
6. Over what period of time are you attempting to raise the money?
7. Who else is contributing or supporting the project/appeal/organisation?
8. Relate it to the donors.
9. Be concise, to the point and use positive language.
10. Use benefit statements to motivate and give your donor reasons to give.

If you would like further details please contact the Parish Clerk on 823385.

## Recycling in Whimble

Do you know what can be put in your green recycling box?

The following is a list provided by East Devon District Council:-

Newspapers, Magazines, Catalogues	Glass bottles (washed, no lids)
Directories (including Yellow Pages)	Jars (washed, no lids)
Envelopes, Junk Mail, Office Paper	Clean Foil
Empty aerosol cans (not lids)	Cans (washed, no sharp edges)
Batteries (bags provided on request)	Tins (washed, no sharp edges)
Small amounts of Shredded Paper (1 carrier bag per collection)	
Old clothes/textiles (which are not good enough for charity)	

If you have more than will fit in your green box please use carrier bags (not black refuse bags) and put them on top of, or beside, your green box.

Other items that can be recycled locally:-

Cardboard and plastic bottles can be recycled at Woods Farm recycling centre (between Tipton and The Bowd). If you are unable to go there, cardboard and plastic bottles are collected in Whimble now, thanks to WOW (Wasters of Whimble) – just take them along to the car park (off Webbers Close, behind the vet) – next collection 26th April from 10.00am to 11.00am.

Plastic milk bottle tops can be left in a collection box at the back of the Church.

Otter Rotters collect garden waste (not kitchen waste), bags and tags are available from the Post Office.

## Advertising Events

If you are holding an event you would like advertised, or news from your organisation that you would like made public, Gemini FM have asked to be included on your mailing list. Please write to: Mr Tim Pryor, Gemini FM, Hawthorne House, Exeter Business Park, Exeter, EX1 3QS. Urgent items can be emailed to: news@geminifm.co.uk or ring them on 01392 354232.

## Endorsement of Whimble Parish Plan

The Parish Plan which was adopted by the Parish Council in October following an 18 month period of consultation and preparation has now been formally endorsed by East Devon District Council. The Plan was presented to a meeting of the Development Control Committee which resolved that it be endorsed and used to inform decision making in the District and the production of the Local Development Framework, and that the Parish Plan steering group be congratulated on their work.

## Annual Parish Meeting

The Annual Parish Meeting will be held on Monday 28th April in the Victory Hall starting at 7.00pm. The speaker will be Elizabeth Hubbick from Central Devon Magistrates Court. Everyone is welcome.

**Gerri Turner**, Clerk to the Parish Council

HDR

## Records & Pop Memorabilia Wanted

Good prices paid for the following

**Records. CD's, Rock & concert Memorabilia**

**Tour Programmes/ Old Tickets/ Magazines/ Sheet Music**



All types of music, large or small collections

Rock - Pop - 50's - 60's - 70's - Punk - 80's

John W Griffiths

Phone: 01404 823480

Mobile: 07836 369740

Email: hdicksrecords@yahoo.co.uk



# ★ DRAIN-WIZARD

Pitch Fibre Specialists  
Drainage & Light Plumbing Services

**24 Hour Emergency Service**

Blockages, Jetting, CCTV, Repairs, Lining,  
Renewals, Septic Tank & Soakaway  
Problems, Toilets, Ball Valve & Leaks

Tel: Whimble (01404) 822913

Mobile: 07815 064669



## Berry Farm



Apple juice, Cider, Eggs, Pork,  
Fruit & Vegetables

Please call Jenny on 01404 823930

Or visit us in Clyst St Lawrence

# Whimble History Society

WHIMPLE HERITAGE CENTRE RE-OPENS  
ON WEDNESDAY 2nd APRIL 2008



The intention of the History Society has always been to offer different themes and displays each year. Following the successes of both Muffin the Mule and Beekeeping over the last couple of years, this year we are pleased to offer three themes for 2008 – the first is a celebration of 100 years of Scouting in Whimble. We have a selection of items and photographs that capture various times in Scouting, but appear to be lacking in the 100 year old Scout with good enough legs to stand in the Heritage Centre!

As you all know, Whimble is also the home of Ann Daniels, the polar explorer. Ann is the subject of our second section which is devoted to her North Pole trip in 2003, with photos of her brave adventures, items of her survival clothing, cooking equipment, her skis, and one of the sleds she used.

Our third theme is a display about our very own O'Hanlons Brewing Company – showing their products, prize-winning beers and various other items used in the brewing process. John and Liz have achieved worldwide recognition of the quality of their beers, and from just down the road!

The other village-related exhibits have been updated and added to, and we have a wider selection of items for sale. This year our fundraising efforts are for a new storeroom. We have accumulated many artefacts and items of interest but we also have some large items currently in our almost dilapidated store that will very soon need restoration. We also intend to incorporate a craft centre which will give children an opportunity to learn some of the older skills of the country.

The Heritage Centre re-opens from Wednesday 2nd April 2008 from 2.00 p.m. until 4.00 p.m., and then every Wednesday after that, and on Saturdays from 10.00am until 4.00pm, throughout the summer months.

We always have a need for volunteer stewards on these days – if you would like to get involved with the history of this village, all that is required of you is to provide a watching eye on the exhibits and to 'meet and greet' the visitors to the Heritage Centre. Please contact Alan Smith at the Heritage Centre if you would like to help.

We are running a coach trip to Dartmouth on Sunday 18th May, stopping in Dartmouth for lunch, and then going to Coleton Fishacre for afternoon tea. We leave the Square at 9.00am and return about 7.00pm. The cost is £7 to National Trust members and £12 to non-National Trust members. If you would like to join us, please contact **Roger Smith** on 822244.

# WHIMPLE TENNIS CLUB – 2008-09 SEASON

**Don't forget the fantastic value of family membership @ £40.00 per year at our local tennis court (single membership £20 adults, £15 students, £10 juniors).**

The tennis year starts on 1st May – (deadline for renewals). Subscription forms will be e-mailed/posted to existing members. Some forms will also be left at the court, on the shed and can also be obtained by contacting the club secretary:

Judith Imbo - Tel 01404 823240. email: danyimbo@btinternet.com

**What do you want from your club?** This year, the membership form will ask whether you agree to join a telephone membership list. Names and contact numbers will then be provided to all those on the list with a view to arranging games, etc. There's also a request for comments and suggestions.

## **Dates for 2008:**

Court maintenance: (members are all responsible for helping here!)

**Sunday 13th April 10.00am - 12.00noon**

as back up in case of rain, etc., **Sunday 20th April 10.00am -12.00pm**

## Summer social:

An informal tournament and get-together with a few snacks and drinks which members contribute

**Thursday 10th July 7.00pm – 9.00pm**

## Club nights:

We will be making a concerted effort to ensure someone will always be there for the first hour on adults' club nights – Thursdays from 7pm, for an informal game or just a knock-up. Club nights will commence on **Thursday 8th May**

## **NEW FOR 2008!**

**Regular family evenings for tennis – Wednesday 5.00pm - 7.00pm from May to September 2008.**

**At some of these evenings, we have two young, experienced and enthusiastic performance players from the University of Exeter Tennis Squad, who would like to run some sessions for children locally as part of their Duke of Edinburgh Award Scheme.**

**Please note parents have responsibility for their own children at all times.**

**Taster evening 30th April 2008 to start the season off!**



# **BARRY SEAFORTH DECORATING SERVICES**

Est 1979



PAINTING WALLPAPERING  
SPECIALIST FINISHES MURALS TILING  
COVING CARPENTRY ALTERATIONS  
REFERENCES AVAILABLE

Call Barry 01395 513729  
Free Estimates



Little Cot  
Hembury Fort  
Honiton  
Devon  
EX14 3LE

Tel  
01404 841699  
Mobile  
07976725516

## **M P SMALL ENGINES** Mike Persey

**SERVICE & REPAIR TO**

**All makes and types of  
Horticultural / Garden  
Forestry and Small Agricultural  
Machinery**

**Specialist in the repair of older  
Machinery and Sports Club machinery**

**Makeovers and rebuilds undertaken**

**New machinery at competitive prices**

**Collection Service**

# PETER COSSLETT

**CARPENTER AND BUILDER  
QUALITY WORKMANSHIP**

**KITCHEN FITTING**

**DOORS AND WINDOWS**

**TIMBER CONSERVATORIES**

**EXTENSIONS AND MINOR**

**BUILDING WORKS**

**COMPETITIVE PRICES**

**&**

**FRIENDLY SERVICE**

**Tel: Whimble (01404)823279**

**Mobile: 07768 436042**

# S.H.DANIEL

**ELECTRICAL CONTRACTOR**

**CROCKERNHAYES**

**WHIMPLE**

*PRIVATE ADDRESS*

Malham House

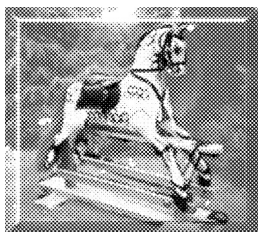
Awliscombe

Devon



# BANFIELDS

*Traditionally carved rocking  
Horses & Restoration*



18 Rectory Close, Whimble,  
Devon EX5 2UF

Tel 822162

E-mail Banfieldgew@msn.com

# KD Landscapes

[www.kdlandscapes.co.uk](http://www.kdlandscapes.co.uk)

- Bespoke Decking a speciality
- Pergolas, planters, fencing, car ports...
- All garden joinery requirements
- Garden design and build
- Quality workmanship
- Professional and friendly service
- Contact Ken for a free consultation

t: 01404 822845 m: 07962 160494

email: [ken@kdlandscapes.co.uk](mailto:ken@kdlandscapes.co.uk)





# Whimple Primary School

Parents, Teachers & Friends Association

## What have we been up to??

- Easter Bingo both children and adults greatly enjoyed the return of 'Johnny Bingo' and we raised a whopping £300! Thanks to everyone involved.
- Easter Egg Hunt (thanks to Mrs M Burrough for permitting us to use her orchards and to the Easter Bunny for attending), despite inclement weather, lots of smiling children braved the rain and were rewarded by finding lots of eggs!
- Recycled decorated Easter basket competition judged by 'Wasters of Whimple', Ed and Nicky Hitchcock and Pam Scanlan. Thanks to everyone involved.

Winners KS1 Freya Harris and Noah Hemsley

KS2 Abi Bunkum and Kate Terrett

- Easter egg competition run by the Fountain Inn, many thanks to the Fountain Inn and Cathy Sharkey –the winner will be announced at the Fountain Inn.
- Cake stalls – very successful so far this year, Yr 5 will be running their stall on 4th April at 3.30pm at the school.

## Watch out for-

**Village King or Queen raffle 2008**, between 5th April and 30th April our children will be selling raffle tickets for a £50 voucher kindly donated by:

THE JACK IN THE  
GREEN INN

The child selling the most raffle tickets will be crowned Whimple King or Queen at the Blossom Dance on Sat 17th May, reign for the year and win themselves a £20 book voucher kindly donated by:



continuing to support music  
in Whimple Primary School

**Blossom Dance Sat 17th May**, dance, drink, food and merriment

Don't miss out grab your tickets early this year! Tickets will be available at Whimple Post Office from 21st April.

**Fri 23rd May** - Yr 6 Cake stall

**Mon 7th July** - Beetle Drive

**Sat 12th July** - School Fayre, Fun run, Fancy Dress and Grand Draw.

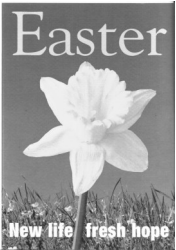
**Fri 18th July** - End of term children's party



**WHIMPLE CHURCH**  
[www.whimplechurch.org](http://www.whimplechurch.org)



We were pleased to have so many join us for our special Easter services, especially at **Stainer's The Crucifixion** on Palm Sunday and at our **Easter Day Family Communion**. Thank you to all who worked so hard in rehearsing for The Crucifixion, especially to Reg Porley, our organist, and also to the ladies who decorated the church so beautifully with flowers.



Our **Candlelit Valentines Dinner** on 14th February in the Victory Hall was a great success when nearly 100 guests enjoyed a terrific three course dinner and live music. Revd Rob Wilkinson spoke about God's love for each one of us, and showed us the following ingenious Valentines acrostic:



*God so loVed the world  
 that he gAve his one  
 and onLy Son  
 that whoEVer  
 believes iN him  
 s hall noT  
 perIsh but have  
 eterNal  
 lifE*



*John 3:16*



It is a great sadness to many that we are losing our **village shop**, and we wish Graham and the family well as they plan for the future. If you would like assistance with your weekly shopping, several of our church family have expressed a willingness to home-visit and assist their less able-bodied friends and neighbours in this way. If you are interested in receiving such assistance please contact David Rastall on 822486.

Please do support Christian Aid week again this year, which will be the 11th-17th May. **Christian Aid** is a relief agency, striving to end poverty, and works wherever the need is greatest, irrespective of religion or race.



We would love to welcome you at our **Church Fete** this year, at 2.30pm on Saturday 14th June, at Hindstrete, Church Road - do put the date in your diary!

Another advance date, for those of you with children aged 11-14 is the **Total Adventure Activity Holiday** running at Kings School, Ottery St Mary, from 25th - 29th August 2008. This will be an action packed week of activities being organised by local churches, and run by Adventure Plus. The all-inclusive cost will be £150, and further details can be found at [www.adventureplus.org](http://www.adventureplus.org)

We look forward to welcoming you at Whimble Church where there is a variety of styles of service, and children's and young people's groups for all ages. Please do join us!

## St Mary's Church

### Monthly Programme of Services

1st Sunday	8.00am	Holy Communion
	11.00am	Celebration Service
2nd Sunday	11.00am	Holy Communion
	10.45am	Sclub11/Impact in the Scout Hut
3rd Sunday	8.00am	Holy Communion
	11.00am	Morning Service
4th Sunday	11.00am	Holy Communion
	10.45am	Sclub11/Impact in the Scout Hut
5th Sunday	11.00am	Joint Benefice Communion



# BARN DANCE IN THE BLOSSOM.

Saturday 17th May  
Gates open 5.30pm

Live Band and Caller  
Bar

Roast Pork Rolls & Bar B Que

This Event will start at 6pm with

## Maypole Dancing

danced by children from Whimble School

Ticket price includes food:  
£7.50 adult, under 16's & OAP's £4 under 5's £1

At: 1 Higher Woodhayes Farm  
Woodhayes Lane

Tickets from the Post Office or Sue Wilson

Very limited parking, please walk or park at the loading bay at Lower Woodhayes  
by kind permission of Margaret Burrough



No high heels please. Further details from Sue Wilson  
822641

This is an outdoor event and may be cancelled with full  
refund given if weather is bad.

# CARE CONCERNS

Local care for  
Local people

Respite care, bathing, cooking,  
transport, infant/toddler care.

Minimum of 1hr

Very high standard of care given  
Fully qualified  
CRB Checked

Enabling people to remain in their  
own homes

For further details phone:  
01404 822096

# RED HOMES ESTATE AGENTS



0.75% No Vat  
Sole Agency Fee  
Why Pay More?

16 National Offices and  
Growing Covering South England!

- Advertised in Express & Echo
- [www.rightmove.co.uk](http://www.rightmove.co.uk)
- [www.redhomes.co.uk](http://www.redhomes.co.uk)
- Accompanied Viewings
- Regular Feedback

Call The Aylesbeare Office Now  
for a Free Valuation on:  
01395 225552

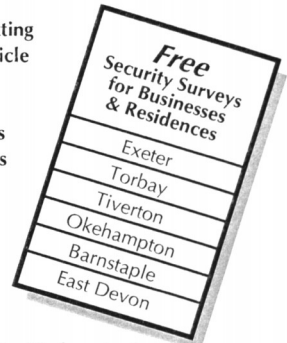
# Complete Locksmithing Service



- 24 Hour Emergency Service
- Standard & Computerised Key Cutting
- Duplicate Keys Cut For Any Vehicle
- Car Transponder Keys Cut
- 24 Hour Lock Out Service
- Replacement Lock Installations
- Aluminium & Upvc Door Locks
- Master Key Suites

MASTER LOCKSMITHS

- Free Security Assessments
- Locks Supplied & Fitted
- Safes Opened
- Burglar Alarm Installations
- CCTV Systems



Agents For Medeco Locks



**01392 411887**  
**FAX 01392 424817**



A Wide Range of Security Products  
Available For Demonstrations At...

- 131 Sidwell St. Exeter EX4 6RY
- Unit 1, The Space Place, Alphinbrook Rd. Marsh Barton, Exeter.

[www.guardian-security.sagenet.co.uk](http://www.guardian-security.sagenet.co.uk)

## Pride of Place?

The Parish Plan process showed that Whimple residents have a very high regard for the environment in which they live. There were, nevertheless, concerns about litter hotspots and suggestions for improvements. In order to further encourage a 'pride of place' the Parish Council has entered the New Entrant class of the 2008 Devon Best Kept Village competition.

The object of the competition is to encourage villages possessing a real sense of community to improve their environment by caring for buildings, clearing litter and promoting schemes to improve the general appearance of the area. Judges do not look for architectural merit, prettiness or an abundance of flowers, but for **villages which do the best with what they have got**. The judging schedule is set out overleaf.

Judging will take place in May and June, with final judging in July and August. May we appeal to all residents, organisations and businesses to make a special effort this year to keep their premises tidy, to remove out-of-date posters and take a communal responsibility for reducing the amount of litter.

The Council has arranged a village 'Litter Pick' on **Saturday 26<sup>th</sup> April**, meeting in The Square at 9.30am. Please come along with gloves and bin bags and help to make our village a place of which we can be proud.



## Judging Schedule

- |   |    |
|---|----|
| 1. Absence of litter and unsightly refuse dumps on verges   | 10 |
| 2. Condition of village greens, playing fields, school yards, public seats and noticeboards                         | 10 |
| 3. Condition of public and private buildings, gardens and allotments, including hedges, walls, fences and outhouses | 10 |
| 4. Condition of churchyards, cemeteries and war memorials   | 10 |
| 5. Condition of public halls, sports facilities and car parks   | 10 |
| 6. Cleanliness of public toilets, bus shelters and telephone kiosks   | 10 |
| 7. State of footpaths, stiles, field gates, signposting, ponds and streams  | 10 |
| 8. Condition of commercial and business premises, including advertisements and other signs                          | 10 |
| 9. Clear evidence of local commitment and initiative in the care and maintenance of the village                     | 10 |
| 10. Evidence of community spirit  | 10 |



Campaign to Protect  
Rural England

# The Bad & the Ugly!

Like you, I was a little befuddled with what to expect from a panto that was in fact based on a western?

Starting some twenty years earlier, it deftly introducing a cast of well known western characters – girls as well as boys. I loved the skirmish between the Indians and the Cavalry; someone worked really hard in the background creating the costumes. Although not ‘steeped in authenticity’ (who cared) the message jumped across from the stage exactly who were the ‘goodies’ and who were the ‘baddies’!

We moved on in time ably assisted by our very own Sally Wilde who with a deft spin of the time clock made sure we knew which part of Western history we were in!

Twenty years on, the ‘notorious’ James gang consisted of Jesse (Dave Mahoney) and his no good brother Frank (Geoff Delves) who were both on the run and just getting into one too many scrapes along the way to be really successful outlaws. Frank being somewhat hampered by his ludicrously huge 400 gallon hat. What a prop (yes, I said PROP!) which caused great mirth every time he attempted to stand upright on the stage. We made up our own minds as to who we considered to be ‘Bad’ and who was to be ‘Ugly’?

The humour of these two was only slightly outshone by the fairer sex - congratulations to Calamity Jane (Kathy McLauchlan) and Annie Oakley (Petra Brown) who certainly proved they could hold a tune.

The story bowled along, well supported by all other members of the cast who tried their hardest not to fall about laughing when *propping up the bar* took on a very literal meaning. The atmosphere was added to throughout with Slack Ma’ Girdle supplying the musical accompaniment.

What a great touch to have the ‘Wanted’ posters handed out to the audience. There was no denying it; these two were certainly going to get their just desserts – deftly handed out by two young audience members supported by two huge custard pies. Yes, a bit of slapstick does yer good!

The cancan girls did well with their routine and I’m sure that it didn’t escape anybody’s attention that it really was THE END spelt out on their bloomers!!

A very well done and cheers all round to all of you involved. Your hard work as always is much appreciated in bringing these seasonal productions to life, no mean task with all the differing ages and abilities involved.

If you didn’t get to see it this year please make an effort to support The Whimbletons panto next year which will be Beauty and the Beast. Perhaps you would like to help in the production side or fancy becoming a cast member, if so please contact Emma Palmer or any other member of the group they will be happy to hear from you.

**Julie Millward**



# PERKINS PEST CONTROL

## DO YOU HAVE PROBLEMS WITH:

- RATS & MICE • MOLES • WASPS • FLEAS
- COCKROACHES • BIRDS ETC?

## WHAT WE CAN OFFER ...

- RAT & MICE CONTROL • MOLE CATCHING
- WASP NEST REMOVAL • FLEA TREATMENT, FLY CONTROL and much more ...

### Perkins Pet & Country Store

Unit 17, Finnimore Trading Estate, Ottery St. Mary,  
Devon EX11 1NR

- Tel: 01404 812605
- Mobile: 07738 899113
- Fax: 01404 815300
- e-mail: fwperkins@eclipse.co.uk
- Visit our website at:  
www.perkins-pest-control.com



## Reflexology

Why not try this  
balancing & relaxing  
therapy?

For more information  
call Ali Thomas on  
**823797 or 07812-575028.**

BSc. ITEC MAR MCThA

This little piggy went to market...



this little piggy stayed home...  
and ordered everything online from  
Own!



For food that's  
Local, fresh, convenient, delivered.

**www.ownonline.co.uk**  
or contact Dave, Keith or Sue on 01392 832000



## THE PANTO – BEHIND THE SCENES

### The Good, the Bad and the Ugly!

For the many great supporters who paid up hard earned cash and dragged themselves away from the telly (and rugby) into the Village Hall to watch a performance this year – we thank you! As they say in the business (well, professionals do, anyway) it's the audience that counts.

Hopefully, you all had a good night and are already looking forward to next year.

For those of us involved in putting the event on, we all seem to be suffering from a strange 'pantocoldturkeyitous' type disease – with symptoms especially obvious on a Monday night in March. So, in order to fend off these side effects, I thought I might write a little about what it's like preparing for the performance from a stage managers' point of view.

I have only held the role for two years and, as with many involved in this sort of role, just happened to be in the wrong place at the wrong time when the previous candidate wanted their life back – or wanted to go skiing. A fantastic job had been done by everyone involved each year and, as a relative newcomer to Whimple, it was a scary prospect – but turned out to be really good fun.

Every year starts with 'Peter's script'. This, miraculously, appears some time in October, ready for the first read through, and is complete with all stage directions, scenery requirements and special effects. How he does all this is a mystery – especially as it's always really funny, too.

This year the first panic set in when I heard the words 'they collect wood and light a fire', closely followed by 'a bear roars in the distance, then a coyote howls'. *Oh no – difficult fire-involved things and sound effects!* This continues on to 'Calamity Jane shoots the sherriff's hat straight up in the air and it lands back on his head' and 'then the bar collapses and someone gets stuck in the saloon doors'. *How am I going to do that?!!*

I know, I think – I'll get Ed H to help!! He was trying to 'rest' this year, but had no chance.

Therefore, off we went to Exeter (with Nicky H to assist with the carrying) to buy about 20 cowboy guns, Indian weaponry, fake fish, bells for the Morris Man, and goodness knows what else. We were so exhausted that we were forced to visit a cocktail bar and nearly caused an unintentionally major international terrorist incident on the train home - involving a panto rifle and some football fans – but I won't go into detail.

Luckily, Gordon Podbury was a star, as always, and immediately set about building an amazing collapsing bar, saloon doors, hitching post etc etc. (For those who attended the show on Friday, they may just have spotted the bar collapsing a little more often than it should have....). Ron Powell seemed to take organising the sound effects in his stride, the rest of the team had the costumes, music, lighting, teas etc. etc. well sorted. So, from my point of view, it all seemed to be coming together.....

However, put lots of children with a choice of toy weaponry alongside grown men with the chance to dress up as cowboys, and it starts to seem like not such a good idea! Luckily some very effective bribery was arranged backstage involving 'light refreshments', cakes, DVD's etc. which kept them all out of trouble.

Meanwhile, I was panicking about when the scenery had to change, where the props all had to be, how we can make the gunshots sound louder, whether the hat being shot off completely compromise would work, and just about everything else. Ed took all the curtain pulling in his stride (I won't do this anymore, after getting it all wrong with Puss in Boots) and everyone leant a hand with the scenery changes. It really is a team effort in Whimble and we hope this shows when you're watching each year.

I'm really lucky, I think, as I get to see all the performances right through each evening, whereas many of the actors and backstage helpers do not have this opportunity. As I'm sure you are all aware, quite a bit of ad-libbing goes on, so it's different every night and always entertaining.

There is quite a lot involved for all in the weeks beforehand. Monday nights are given up for rehearsal from the New Year onwards, plus extra evenings are needed for the music, children's rehearsals and costume fitting. But, when the actual week of the show starts, everyone pulls together and has a great time.

If any of you would like to be involved next year, just make yourself known to Emma (her number is in the back of the mag). If you are new to the area it's a great way to pass the time on cold, wet January Monday nights - oh, and meet people!

Sally



## **Heritage Taxis**

**At your service  
01404 81 55 44**

## **Tom Vanneck**

**Furniture Restorer  
&**

**French Polisher**

**Modern & antique  
commissions undertaken.**

**Tel. 01392 860502**

**Mob. 07812810846**



# WHIMPLE PRIMARY SCHOOL

## World Book Day

On Friday 7th March all the children came to school dressed as book characters. Oliver Twist, Mr Bump, Hansel, Robin Hood, Cinderella and Scooby Doo just to name a few. It was great to see the costumes paraded around the school and the enthusiasm with which the children discussed their story character.



## Science Week

The 10th to 14th March was National Science Week. This year some children in the school took part in a national online science experiment 'Ready to Learn?'. The Experiment aimed to improve the understanding of links between children's readiness to learn, and factors such as diet, exercise and sleep. The experiment involved pupils carrying out a small number of on-line activities. Each child was given a score on their activities and some helpful tips on how they might improve their readiness to learn in the future.

## Year 5/6 Residential

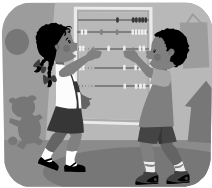
Every two years, the school takes the year 5 and 6 children on a residential trip for 5 days. Just after half-term (yes, in that really cold week!), 31 children went off to Grenville House at Brixham. Whilst there, the children all participated in a wide range of outdoor activities including orienteering, coastal walking, canoeing, sailing, abseiling and the high wire. The majority seemed to particularly enjoy the high wire and abseiling and apparently (according to the children) we have a few experts amongst our staff also!

I am sure if you manage to chat to any of the children involved they will have much to offer – including taking turns to lay the tables, wash up and even Hoover (so there are no excuses for them now!).

## **Numbers, numbers, everywhere!**

For the Spring term, the school is having a focus on maths. Throughout the term, each class is performing to parents in an assembly which has a maths content. This has ranged from singing '10 green bottles' to solving a variety of mathematical problems in role play scenarios.

The children in Key Stage 2 went to Paignton theatre to watch a Maths Roadshow - 'On the trail of the Countback Kid'. It was a lively comedy Western with music; throughout the story of a 'bank job' the children had to actively participate by answering lots of mathematical questions and solving problems in order to find the stolen money.



Part of educating children is also helping parents to support them so to help them along we are holding an evening of maths workshops to include counting, tables, number bonds and problem solving.

## Easter celebration

A special Easter service for children and parents was held in Whimple Church on Thursday 20th March. This included songs from different groups, including the school choir, and a variety of instrument pieces.

**Carole Shilston**

## **Whimple Victory Hall**

As the next step in the improvements in the facilities of the hall, we will be resurfacing the car park in **week commencing 24th May**.

The good news is that we will have a smart, and safer!, new car park.  
The bad news is that the car park will be out of use for all of that week.

We are sorry for the inconvenience, but please bear with us as while the work is carried out.

## FOR ALL YOUR SEWING REPAIRS

&  
**ALTERATIONS**

No job too small

Also dressmaking, table linen  
& Personalised machine  
embroidery



Call Molly on

Office. Tel 01392 460970

or 07748 985830 evenings,  
Wednesdays or Sundays.

14 Bramley Avenue, Off Lower  
Hill Barton, near to the Met  
Office

## CPM Plumbing & Heating



Your Local  
Plumbing  
& Heating Service



Registered  
Business

205961

Repair & Servicing of Oil Gas & LPG  
Heating Systems Boilers & Appliances

Using Hi-Tech Analysing equipment

Fully Insured - All work guaranteed

No Job Too Small - Free Estimates

CORGI & OFTEC Registered for all appliances

For a friendly professional service call:

**Gary Clarke**

**Phone: 01404 822523 Mob: 07812013434**  
Garlands, 3 Dince Hill Close, Whimble



JOIN US AT

## ANDY'S RESTAURANT

PART OF THE INTERNATIONAL SWIMMING SCHOOL, STRAIGHTWAY HEAD, WHIMPLE

A LA CARTE MENU

BAR SNACKS

PARTIES CATERED FOR (UP TO 30 PEOPLE) - CREATE YOUR OWN MENU

SUNDAY LUNCHES

CHRISTMAS PARTIES

BOOKING ESSENTIAL!

*ALSO ASK ABOUT OUR WIDE RANGE OF ACTIVITIES INCLUDING:*

*ADULT SWIMMING LESSONS, AQUAFIT*

*CHILDREN'S SWIMMING LESSONS, MOTHER & TODDLER SESSIONS, CHILDREN'S PARTIES*

*SAUNA, SOLARIUM*

*AND NOT FORGETTING OUR 'NATURE'S WAY' BEAUTY CLINIC WITH A FULL RANGE OF  
TREATMENTS INCLUDING MASSAGES, WAXING, AROMATHERAPY, FACIALS, MANICURES ETC.*

TELEPHONE NOW ON: **01404 822196**

OR CALL IN AND HAVE A LOOK ROUND!



# *Simon Turner*

## *Independent Financial Consultants*

For  
**Independent Advice**  
on Pensions

Penraddon  
Hand & Pen  
Whimble  
EX5 2PX

Mortgages

Investments

Life Assurance

Inheritance Tax Planning

Tel : **01404 822587**

For free initial consultation



*Simon Turner Independent Financial Consultants is an Appointed Representative of LighthouseXpress Limited which is authorised and regulated by the Financial Services Authority*

# Wasters of Whimble

## Cardboard/plastic bottle volunteer collection

The March collection was well supported again and our two volunteers filled their cars. A big thank you to them and the three other's who 'topped up' their vehicles. EDDC tell us that Whimble can not expect these items to be collected kerbside until 2010!

**Next volunteer collection Saturday 26th April 2008 10.00am -11.00am Car park off of Village Square (behind Vets).** Clean and crushed cardboard/plastic bottles (lids removed - milk bottle lids can be recycled by the Church)



## Freecycle

You may have heard of this internet based idea where you can pass on unwanted items. This great common sense idea means:

- we throw less away so less is going to landfill or incineration;
- and we save new products being manufactured i.e. saving a huge amount of energy in the manufacture and transportation of new products.

As well as Freecycle/internet disposal you could:

- Use the charity shops - Ottery St Mary and Honiton have many that will take unwanted clothes, textiles, bric-a-brac.
- Use RIO (Recycling In Ottery) just before the bridge as you go into the town, they take almost anything and will collect or deliver for a small fee (01404 815825).
- Advertise goods in this magazine.

## Village Event

We intend to hold a Freecycle event in the Village in May or June - date and venue to be confirmed.

This will involve:

**AM** - bring your unwanted, quality, clean, workable, portable items to the venue. For larger items that can't be carried away, we will display photo's with collection and contact details.

**PM** - the venue will be open to the public for people to take things away. Number of items taken per person may be limited to discourage dealers. Any donations gratefully received.

**Rules:**The organisers will just be hosting the event for you and will take no responsibility for the goods.

Products bought to this event must be yours to dispose of.

Only complete, quality, carryable goods i.e. crockery, games, equipment, tools (No soft toys, clothes)

**This is not a jumble sale. It is your chance to pass on unwanted goods, locally and conveniently.**

### Other proposed events

**Fashion Show** - Dig out that expensive outfit that doesn't fit anymore and get some money back whilst recycling. Commission rates will apply, date and venue to be confirmed. (quality, clean clothing, accessories for all ages).

**Composting/tackling food waste talk** - it is estimated that 35% of our weekly rubbish is kitchen/garden waste and biodegradable waste has a huge effect on the amount of methane created.

**You ask us** - any suggestions for future topics or events will be very welcome.

**Next meeting** - 6th May at 8.00pm at 41 Grove Road

Contact:

Alison Betts - 823967

Jenny Sanders - 823015

# legal expertise for everyone

**Everyys has been providing quality legal expertise, delivered professionally yet personally to families and businesses across the region for many years.**

- Family & Matrimonial
- Conveyancing
- Employment Law
- Buying/Selling Businesses
- Personal Injury *No*
- Property, Contract & Inheritance Disputes *Win*
- Dispute Resolution *No Fee*
- Tax Planning
- Licensing
- Wills, Trust & Probate
- Criminal Law

**everyys**  
solicitors

**Call our Honiton team of experts on 01404 41221/43431  
or visit [www.everyys.co.uk](http://www.everyys.co.uk)**

Regulated by the Solicitors Regulation Authority

# Whimble Toddlers Group

Back of the Victory Hall, Church Road, Whimble  
Wednesdays 2.00pm - 3.30pm (term time)



Open to Mums, Dads, Grandparents and Guardians  
with children from 0 - 3 years old

Please come and join us for lots of fun and games  
all for just £1 (snack included)

**SLACK-MA GIRDLE**

for  
Ceilidhs, parties, weddings,  
Christmas sing-a-longs.  
The local band  
for all occasions

Tel 823083

Not as interesting as Granny's!

## Enjoy a Healthier Lifestyle

Discover the benefits of Aloe Vera  
from the world's largest and  
best grower of Aloe Vera Plants

*Health, Nutrition,  
Skincare, Weight loss*

60-day money back guarantee

Call 01404 822315 for your free product  
trial

**Sally Baker**

Independent Distributor  
Forever Living Products

# EXETER CARAVAN CENTRE

For Sale - pre-owned caravans  
also caravans sold on owners behalf.  
Caravans always bought and sold.

01404 822116

or

07985 179399

London Road, Whimple



## SOFT FURNISHINGS & TRADITIONAL UPHOLSTERY

Loose Covers to Recovers  
Cushions to Footstools  
Headboards to Bedding  
Curtains—Blinds—Pelmet  
Swags & Tails  
And much more

## CAPITAL & CITY TAXIS

**01392 433 433**

**FOR ALL YOUR  
AIRPORTS,  
SEAPORTS & EXETER  
STATIONS**



Reg no: 4094



# O'DELL PLUMBING & HEATING

Tel: 01404 811773 Mobile: 07974 818833

FOR ALL TYPES OF GAS AND OIL HEATING INSTALLATIONS.

BOILER SERVICE, REPAIR & BREAKDOWNS.

BATHROOMS & SHOWERS.

UNVENTED HOT WATER SYSTEMS

**Garden Design and Construction**  
from a single border to a total make-over

**A PROFESSIONAL SERVICE WITH EXPERT  
PLANT ADVICE - FREE CONSULTATION**



**Golden Leaf**  
L a n d s c a p e s

**Louise Turner N.D. Hort**

**Robert Mogridge R.H.S. Cert Hort**

Tel 01392499074 Mob 07811781137

e-mail: [info@gardenlandscapes.co.uk](mailto:info@gardenlandscapes.co.uk)

[www.gardenlandscapes.co.uk](http://www.gardenlandscapes.co.uk)

# Whimble Victory Hall - Craft Classes

We were absolutely delighted at the number and enthusiasm of all the people who recently participated in a series of craft and flower arranging classes at Whimble Victory Hall. They rolled up their sleeves and tackled a wide variety of topics from pampering products, which ranged from fizzy bath bombs, exfoliating body scrub and scented bath salts to contemporary flower arranging, simple jewellery, willow weaving and hurdle making, and to stylish Easter Decorations.

The aim of the courses was to encourage people from the community to have a great time whilst learning new skills in a comfortable, local environment. Everyone agreed that the hall has fantastic amenities and provided us with a great space where we could all spread out and get creative but was still intimate enough that we could chat (very important!) and inspire one another as great creative inspiration and innovation struck.

The Spring courses were such a resounding success that we hope to run a new series in the Autumn with a focus of getting ready for Christmas with projects such as cranberry and star-anise vodka, sloe gin, orange and clove pomanders, festive pot pourri and pampering gifts, Christmas Wreaths, and a whole load of festive decorations.

Why not come along and enjoy the festive fun – watch out for further details.

**Sarah Pepper**, The Studio, Broadclyst, EX5 3HX Tel: 01392 460032

## THE PENSION DRAWDOWN COMPANY

### INDEPENDENT FINANCIAL ADVISERS

**FOR UNBIASED, QUALITY FINANCIAL ADVICE BASED ON YOUR  
CIRCUMSTANCES PROVIDING SOLUTIONS TO YOUR NEEDS  
INCLUDING**

**SAVINGS INVESTMENTS PENSION PROVISION  
RETIREMENT OPTIONS inc ANNUITIES  
LIFE AND CRITICAL ILLNESS COVER INCOME PROTECTION**

**Contact: Bob Diamond at Waterlake Meadow, Church Road, Whimble  
On 01404 822865 or Email [r.diamond1@ntlworld.com](mailto:r.diamond1@ntlworld.com)  
For a free initial consultation**

Appointed Representative of The Burns-Anderson Independent Network PLC,  
which is authorised and regulated by the Financial Services Authority



What could you do with ten minutes of your time?

## 'The Mortgage Makeover'

Ten minutes is all it takes to determine if you're paying too much for your mortgage.

Ten minutes is all it takes to see whether we can save you thousands of pounds.

Ten minutes is all it takes to decide whether you can afford to pay your mortgage off early.

Ten minutes is all it takes for impartial, independent financial advice.

Contact Stephen Clare on 01404 823375

or email – [stephenclare@thinkpositive.co.uk](mailto:stephenclare@thinkpositive.co.uk)

or by post - Longfield Whimble EX5 2TF





# Whimple Womens Institute

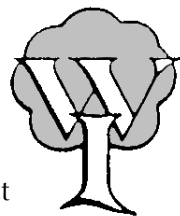
At our February meeting our speaker was Mrs Coral King who recalled her time as a member of the Luton Girls' Choir. Coral gave us a fascinating account of the history and development of the choir, together with a vivid description of the very high standards and discipline expected of the girls. Twice weekly rehearsals were essential - regardless of other commitments, including birthdays etc! The subject of the March meeting was the Donkey Sanctuary at Sidmouth, when we were entertained by a delightful and enthusiastic speaker.

The Institute has also held a very successful coffee morning in order to replenish our funds. Such events are doubly pleasurable as we all enjoy the opportunity to socialize.

Next month we not only look forward to our regular meeting on Tuesday 8th April, but also to the Spring Council Meeting at Exeter University on 17th April.

The usual reminder that new members and guests are always welcome at our meetings on the second Tuesday of the month at 7.30pm. Those seeking further information should contact Ann Bowden (823450).

**Rosemarie Burrows**



**Solar Heating Made Simple**

**LOCAL FAMILY RUN BUSINESS FOR ADVICE CALL:**

**Tel: 01404 823880 or Mobile: 07906 255326**

**Email: [info@solarsimplicity.co.uk](mailto:info@solarsimplicity.co.uk) Website: [www.solarsimplicity.co.uk](http://www.solarsimplicity.co.uk)**

- Generate Up To 70% Hot Water free
- Reduce Carbon Emissions And Climate Change
- Government Grant Available
- South West Generates Highest Solar Radiation In UK
- Installation Adds Value To Your Home
- Free Suitability survey by BPEC installer

## PARTY TIME?

**Family Celebrations,  
Milestone Anniversaries**

## *Marquee de ParTee*

**Pretty Party Marquees and  
Pavilion Tents hired for  
*Your Special Occasion***

**Complete service for tables  
chairs carpets lighting etc.**

**introductions to  
Caterers & Hogroasters**

**Philip & Angela Crisp**

**Kennford, Exeter.**

**01392 83 27 75**

**OR Visit us at:**

**[www.marquee-de-partee.co.uk](http://www.marquee-de-partee.co.uk)**

## The Jays



The Square, Whimpe. EX5 2SL

Jan and John offer a friendly and relaxed stay at the Jays.

Close to Exeter Airport for which transfers are available

Colour TV in all bedrooms

Guest Lounge with tea/coffee.

Several local Pubs and Restaurants within easy reach -(pick up service)

Bed and full Breakfast menu:

£20.00 per person per night.

No smoking.

Phone: 01404-823614

Fax: 01404-823629

e-mail: [jaydiscombe@supanet.com](mailto:jaydiscombe@supanet.com)

## OAKS & PARTNERS

### AUCTIONEERS & VALUERS

invite entries for their regular sales of antique & later furniture, porcelain, silver and plate, jewellery, metalware, paintings & prints and items of general interest at

**The Old Tannery, Exeter Road, Cullompton**

[We're easy to find on the Honiton side of Junction 28 of the M5]

The saleroom is open for receipt of items for sale  
Monday to Friday between 9.00 am and 4.00 pm  
Bring items along for valuation on a Friday morning

We will be pleased to call to your home  
to discuss valuations without obligation or collect items for sale  
Individual items to full house clearances

**Tel 01884 35848** for further details

Sale catalogue can be seen on <http://www.invaluable.com>

e-mail address [roger.shenton@btclick.com](mailto:roger.shenton@btclick.com)



## Longfield Cattery

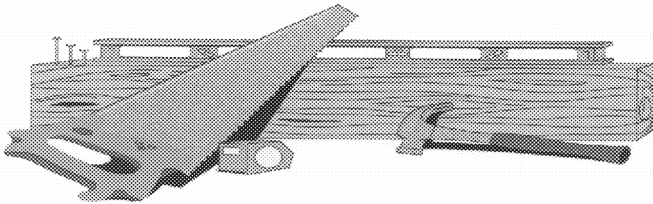
heated single and double chalets  
personal care and attention



(now also looking after small animals)

01404 822275

Longfield ~ Church Road ~ Whimble ~ Exeter ~ EX5 2TF



fencing, pergolas, gates, trellis  
and sundecks.

01404 823002

free estimates and over 25 years of quality  
workmanship  
also patios, and brickwork.

**P. R.**

**S**

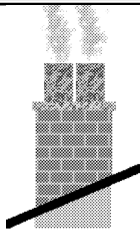
**M**

**I**

**T**

**H**

# Chimneys Wood Burners Fires



Swept, Installed, Repaired,  
Lined and Built  
"All your chimney needs"

Alf Butler

**Tel: 01404 841611**

A fully insured and HEATAS  
registered Company

# ARK POTTERY

STUDIO, SHOP & GALLERY

Wide choice of affordable  
pottery direct from the potters, all  
designed and made on site. Also  
sculptures, pictures and cards.

**ENTRANCE & PARKING FREE**

- Have a go on the wheel!
- Pottery Parties
- Commissions
- Team Building Groups

Find us just off the Ottery/Sidmouth  
Road at Wiggaton (Follow the brown  
tourist signs from Ottery.)

**OPEN DAILY 10 a.m.- 5 p.m.**

Tel. 01404 812628

email:ark.pottery@btopenworld.com

## Historic Buildings

**Advisor on Conservation Repair /  
Sympathetic Alterations**

**Vernacular Buildings-  
Assessment, Proposals & Options**

**Listed Buildings-  
Planning Applications**

**&  
Building Regs**

## **Michael Board Building Consultancy Ltd**

### **Modern Buildings**

Little Cot  
Hembury Fort  
Honiton  
Devon  
EX14 3LE  
Telephone  
01404 841699

**Design Service for  
New Build Home  
Projects**

**Extensions and Alterations to  
Properties-  
Designed & Drawn for  
Planning/Building Regs**

All information in the article below is the personal advice of a Beauty Therapist.  
Any specific medical conditions should be discussed with your GP.  
Extracts taken from Vitality trade magazine.

## ANTI-AGEING ADVICE

### PROTECT YOUR SKIN WITH LAYERS OF CLOTHING

English weather can be unpredictable at best, and the trick to keeping our skin strong and healthy during the worst of the winter months is to keep it protected. In exactly the same way as we layer our clothes to keep our bodies protected, we need to layer our products to keep our skin protected.

A skin that is dehydrated will require mainly water based products, with little or no lipid content, and will not give protection against wind and extreme cold so an added layer of protection should be added.

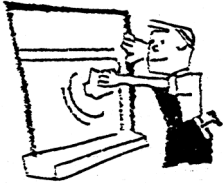
Just as undergarments shape your skin, serums and concentrates should be used to add energy and vitality to vulnerable skin. Serums usually contain higher active ingredients in a lower molecular structure, allowing quicker, better results than a cream alone. When used specific to skin type they give the nutrients and energy to correct problems.

If undergarments smooth, the everyday clothing you wear can be said to smooth your contours, and treatment creams and moisturizers should correspond to your serum, helping to correct the skins surface.

Then we come to the real protection offered by your best winter coat, hat and gloves. These conceal your skin and give final protection to it and, in the same way, a final layer of a good SPF (sun protection factor) should be added - no less than SPF15. I wear SPF50 on my face all year round. I would advise all clients, including teenagers, to wear an SPF every day without fail. Ultraviolet light is the single most powerful cause of premature ageing, and attacks in average daylight year-round not just during the summer months. Clients tell me they work in an office at a computer all day so they believe it won't be necessary. However, computer screens throw out UV damage like there's no tomorrow. Remember the mesh screens we're advised to put over our monitors to protect from UV? How many of us have one of them these days?

It would be a good thing to protect vulnerable areas just as we wear gloves to protect fingers, we should protect the delicate eye and lip areas and even the neck and décolleté. I wouldn't advise my clients to venture out in the snow and ice without some really good gloves. The same advice applies when it comes to skincare,

**Gina Beicher**, Southbrook Skin Care Clinic  
Southbrook Lodge, London Road Whimple, EX5 2PQ  
TEL: 01404 823805 Mobile: 07817 418137 [gina.birchmore@btopenworld.com](mailto:gina.birchmore@btopenworld.com)



WINDOW

CLEANER

PAINTING & DECORATING  
TILER

PATIO PRESSURE CLEANING

SHED ROOFS - RE-FELTED

GENERAL HANDYMAN

(Excellent references if required)

*For that personal service*

Phone Mr Evans on 01404 822120

## N C HAMLYN

FARM MACHINERY REPAIRS  
AND SERVICE

(Welding, fabrication etc.  
and garden wrought iron work)

Workshop facilities and mobile  
service

Contact Nigel Hamlyn on 01392  
466720

or 07702 431244 (mobile)

Paynes Farm  
Broadclyst



Tree & Hedge Planting & Aftercare ●

Contract Work ●

Garden Maintenance ●

Herbicide Application ●

Chainsaw Crosscutting ●

Strimming ●

Brushcutting ●

Call Daniel On:  
07974 385834



**DRM**  
WILLIAMS  
TREES & GARDENS

WORKING WITH

PERRIE HALE  
FOREST  
NURSERY



## M.J.COLES ENGINEERING

(R.T. I.T. B. & CITY & GUILDS)  
SERVICING. ENGINE RE-BUILDS .  
WELDING MOT. RECOVERY.  
PICK UP SERVICE

FRIENDLY LOCAL MECHANIC  
MORE THAN 15 YEARS EXPERIENCE  
FOR ALL YOUR MOTORING NEEDS

CALL

**MARC**

ON

WHIMPLE 822095 OR  
07785 740473 (MOBILE)



## PEACE OF MIND—WHILE YOU'RE AWAY

### Home Office

Advice from the Home Office on marking your home and belongings.

1. Fit mortise locks (Kitemarked BS 3621) or bolts to all outside doors, and locks to all downstairs or easily accessible windows.
2. Have an approved alarm system installed - ask your local police and insurance company for advice.
3. Try not to leave valuable items, like your TV, hi-fi, video or DVD, where thieves can see them.
4. Mark belongings visibly and permanently with your postcode and house number. Keep a list of the make, model and serial number of these items and take photos of any valuable items that can't be marked, like jewellery. Give copies of the list and photos to a trusted friend or relative.
5. Ask at your local police station for advice on how to get 'postcoded property' stickers that you could put in your windows.
6. Make sure that you have up-to-date contents and buildings insurance.
7. Most burglars get in through a back door or window. Make it difficult for them by locking all side or back gates and adding trellis to the top of walls and fences. Fit lights that come on at night to cover the sides and back of your house.
8. Put all your tools away so they cannot be used to break into your house and lock your garage and shed with proper security locks.
9. If you have to leave a ladder out, put it on its side and lock it to a secure fixture with a 'close shackle' padlock or heavy-duty chain.



To give **information** anonymously, 'Crimestoppers' is there for you anytime of the day or night.

You can contact Crimestoppers anonymously by calling, and talking to one of their advisors, this helps them understand the full picture and makes sure the best use can be made of your information.

Lets hope you don't need to, but to report **an incident** to the police at any time:

**999 in an emergency - otherwise 08452 777 444**

*John Munslow*

# Please Sponsor Me for the Great West Run



This is the 27th time I have taken part in the Great West Run, and this year (May 4th) am raising money for the Exeter Leukaemia Fund. More than 50 runners are representing this cause, and it is E.L.F's biggest opportunity of the year for fundraising. Your sponsorship would be much appreciated.

It would also help give some meaning to the thousands of miles I have run around the village over these years. Running is a kind of addiction, and although I would like to pretend that it serves some rational purpose (such as good health), in my case it is probably just a habit. A donation, however small, would not save me from my slavery to strenuous exercise, but it might allow me to give a more creditable explanation of my behaviour.

Of course, I shall also be flying the flag for Whimble, and for the over-65 section of the population. Twenty years ago, it was difficult to persuade anyone from the village (other than Barry McConnell) to take part in the long version of the July Fun Run, which used to go to Talaton and Larkbeare. I spent many fruitless hours in the Thirsty Farmer, trying to cajole youngsters to join in. Now Whimble is transformed into East Devon's running capital, and famed for the fitness of its pensioners.

If you would like to sponsor me for any amount, however little, please telephone 01404 822809 one evening.

**Bill Jordan**



Thank you to all those who supported or attended our Jumble Sale on Saturday 15th March. We raised just over £415.00.

This will be spent on new camping equipment, particularly catering equipment which is a priority due to the large numbers we have when we are camping!!

A gas boiler has been long overdue and will save boiling ten kettles at a time!

Cheers

**Alex Spry, 1st Whimble Scouts**







# *TAYLOR MADE DRIVING*

Beginners

Pass plus

Pre 17 lessons

Refresher lessons

Diamond advanced driving

Motorway driving

\*\*\*\*\*

Theory & Hazard Perception Tuition

\*\*\*\*\*

Male & Female instructors

High 1st time pass rate

\*\*\*\*\*

Patient, Friendly & fun tuition

\*\*\*\*\*

A local independent driving school

Teaching local people to

**“DRIVE FOR LIFE”**

**CALL FREE 0800 652 66 69**

Andrew & Jill Taylor

"FLORAL ENCHANTMENTS"

Designer:

Morven Fletcher

Flowers for all occasions

Floral designs to your  
specification

Specialist in Wedding Floristry

Bodley Bridge Cottage  
London Road,

01404 822049



**JULIAN  
WILSON**

**Electrical Contractor**

1 Higher Woodhayes  
Farm  
Whimble

Tel: 01404 822641

**Your Friendly local  
Bed and Breakfast**



**David Brown  
Holway Barton  
Whimble  
Exeter**

**Telephone: (01404 822477)**

**Visiting Practice**

Day and evening  
Appointments by arrangement

**QUALIFIED**

**CHIROPODIST**



**3, Railway Cottages  
Whimble  
Exeter**

**01404 822372**

## WHIMPLE FREECYCLE

Free to collect – PC monitor with cables and 2 loudspeakers. In working condition. Tel 823235

Free..... ..unwanted raffle prize.....red plastic inflatable settee (don't ask!!!!)  
Unopened and never used. Tel 823194

Pair of Thomas the Tank Engine curtains – 43"/1 m 10cm wide, 45"/1m 5 cm drop. Very nice, lined, never used. Free to a good home . Tel 823038

## Blood Donor Sessions

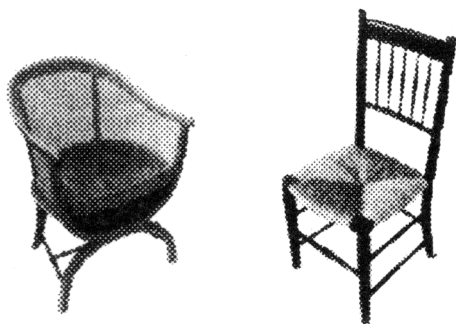
Will be held on Thursday 10th April  
at Feniton Primary School

From 1.30pm to 3.15pm and 5.00pm to 7.15pm

**Help  
save  
lives**



**CHAIR CANING  
RUSH SEATING  
SKEINED WILLOW**



Tel: 01404 822422

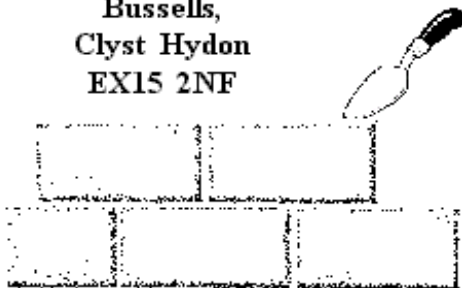
Higher  
Sleuton  
Whimple

Rosemarie Burrows

**TWW BUILDING  
SERVICES**

**EXTENSIONS, PATIOS, PONDS,  
STONEWALLS, FIREPLACES  
PAINTING ETC.**

**Bussells,  
Clyst Hydon  
EX15 2NF**



Tel: 07749 715187



# DEVON HOME IMPROVEMENTS

LIMITED

*"Why Move - Home Improve"*

Your local home improvements specialists for all those building and maintenance needs

Devon Home Improvements can provide you with hands on design and planning, together with a comprehensive supply of tradesmen and materials

We pride ourselves on our expertise and we believe we offer the most friendly and efficient service at very competitive rates.

- **Kitchen & bathroom design / installation**
- **Exterior & interior decoration  
incl. plastering services**
- **Landscaping, patio, decking, garden walls,  
garden structures**
- **P.V.C.u Facia & guttering incl. cladding**
- **Garage door installations**

Call today for your no obligation quotation

**01884 277794**

Or visit our website at

**[www.devonhi.com](http://www.devonhi.com)**

<b>Whimble Parish Council</b>	
<i>Chairman:</i> Sara Randall Johnson	822524
<i>Clerk:</i> Mrs Gerri Turner, Penraddon, Hand and Pen	823385
<b>St. Mary's Church</b>	
<i>Contact:</i> Rev. Rob Wilkinson	822521
<b>SClub11, Impact &amp; Contact</b>	
Phil and Rebecca Dominy	822163
<b>East Devon Councillor</b>	
Andrew Dinnis	850363
<b>Whimble County Primary School</b>	
<i>Headteacher:</i> Mrs. S. Langley	822584
<i>Chair of Governors:</i> Mrs Pam Scanlan, Albecq, The Green	822262
<i>P.T.F.A. Chair:</i> Mr R.Camp	823392
<b>Whimble History Society</b>	
<i>Chairman:</i> Richard Webber	822038
<i>Secretary:</i> Roger Smith	822244
<b>Whimble Mothers Union</b>	
Margaret Burrough, Gatheshayes Farm	822257
<b>Whimble Pre-School &amp; Toddler Group</b>	
<i>Chair:</i> Sally Young, 11 Chard Avenue	823228
<i>Playleader:</i> Jo Westney, Glencroft, Church Road	822168
<i>Toddlers:</i> Sam Walker, 6 Slewton Cesc	822649
<b>Whimble Womens Institute</b>	
Mrs. Ann Bowden, Bradcott House, The Green	823450
<b>Whimble Over Sixties Club</b>	
Mrs B. Iball, 11 Rectory Close	822905
<b>Whimble Recreation Trust</b>	
<i>Knowle Cross Sports Ground:</i> Mr P. Garraff, Luppit	891206
<b>Whimble Village Produce Association.</b>	
<i>Chairwoman,</i> Mrs Doreen Staddon, 1 Allergrove Cottages.	823594
<b>Whimble Football Club</b>	
<i>Chairman:</i> Geoff Delves	823258
<i>Secretary:</i> Karen Delves	823258
<b>Whimble Tennis Club</b>	
<i>Secretary:</i> Judith Imbo	823240
<i>Treasurer:</i> Adrian Rushforth	823276
<b>Whimble Cricket Club</b>	
Roger Smith	822244
<b>Whimble Victory Hall Management Committee</b>	
<i>Secretary:</i> Pam Scanlan, Albecq, The Green	822262
<i>Booking Sec:</i> Ali Tierney	822724
<b>Whimbletons</b>	
Emma Palmer	823083
<b>Neighbourhood Watch</b>	
John Munslow, 44 Slewton Crescent	823456
<b>St. Mary's Bellringers</b>	
<i>Captain:</i> Liz Silk	822389
<b>Whimble Scout Group</b>	
<i>Group Scout Leader (and Marquee Booking):</i> Alex Spry	822844
<b>Whimble Book Group</b>	
Katy Howard, 9 Whiteways Close	823038
<b>Whimble Youth Club</b>	
<i>Leaders:</i> Mino 07902651989 or Sue 07964211195	

# The Whimble News Team

WN53

## **Editor**

Ed Hitchcock 823194

## **Production**

Bob Scanlan 822262

Sally Wilde 823246

## **Delivery**

Ed & Nicky Hitchcock 823194

## **Advertising**

Julie Millward 823985

## **Community diary**

Nicky Hitchcock 823194

## **Treasurer**

Miles Leonard 822415

# LIVING AND SELLING LOCALLY

**HALLS ARE PLEASED TO OFFER THE FOLLOWING SERVICES**

- FAMILY OWNED BUSINESS
- STRONG LOCAL KNOWLEDGE
- SUPERB COLOUR DETAILS
- HIGH IMPACT ADVERTISING
- FREE VALUATIONS
- ACCOMPANIED VIEWING
- FLOOR PLAN SERVICE
- RESIDENTIAL LETTINGS

**TEL: 01404 812000**

**View all properties on the UK's No.1 website: [www.rightmove.co.uk](http://www.rightmove.co.uk)**



**15 Broad St, Ottery St Mary, EX11 1BY**

**Tel: 01404 812000 Fax: 01404 815777**

**Email: [halls@eclipse.co.uk](mailto:halls@eclipse.co.uk) Web: [hallsestateagents.com](http://hallsestateagents.com)**

# *The New Fountain Inn*

*Whimble, Devon*



*A Traditional Olde Freehouse Village Inn*

*As recommended by CAMRA ,  
The Good Beer Guide, The Real Ale Guide  
and the Quiet Pint Guide*

*Real Ales*

*Home Cooking*

*Lunchtime & Evening Meals 7 days a Week*

*Sunday Roasts etc - Vegetarian Choices  
Handmade Desserts, Children's Menu  
& Toddler Portions*

*Join us for a Friendly Drink, Bar Snack or  
an A La Carte Meal*

*Bookings are Advisable*

*Tel: 01404 822350*