

Whimble News



April/May 2006

What's on in Whimble

April

- 2nd S Club 11/Impact at 10.45am in the Scout Hut
- 6th Whimble F.C. Semi Final at Clyst Honiton 7.30pm K.O.
- 8th Easter Egg Hunt at Woodhayes Orchard 2.00pm
- 11th W.I. Meeting at 7.30pm in the Victory Hall
- 17th The Real Muffin The Mule in The Heritage Centre 10.00am - 3.30pm
- 23rd S Club 11/Impact at 10.45am in the Scout Hut
- 25th Whimble Action Committee 4 Youth 7.30pm at the Thirsty Farmer
- 28th Quiz in support of Whimble History Society, run by Tiverton and Honiton Conservative Association, at 7.00 pm in the Victory Hall

May

- 7th Celebration Service in Whimble Church
- 13th VPA Spring Plant Sale 10.00am - 12.30 pm in the Victory Hall
- 14th S Club 11/Impact at 10.45am in the Scout Hut
- 19th Quiz on behalf of Kidney Research UK - starts 7.30 pm In the Victory Hall
- 20th Soup and Sarnie Lunch from 12:30 to 2:00pm in the Victory Hall
- 20th Barn dance in the blossom - at 6.00pm at Higher Woodhayes Farm
- 23rd Parish Council A. G. M. at 7.30pm in The Victory Hall
- 27th PTFa Fashion Show at 7.30pm in the Victory Hall
- 28th S Club 11/Impact at 10.45am in the Scout Hut

June

- 4th Celebration Service in Whimble Church
- 10th Garden Fete at Hindstrete at 2.30pm
- 11th S Club 11/Impact at 10.45am in the Scout Hut
- 16th Tennis Summer Social at 7.00pm
- 25th S Club 11/Impact at 10.45 in the Scout Hut

July

- 1st - 8th Village week

St Mary's Church

For Easter services see page 41

Monthly Programme of Services

1st Sunday	8.00am	Holy Communion
	11.00am	All Age Service
2nd Sunday	11.00am	Holy Communion
	10.45am	S club 11/Impact in the Scout Hut
3rd Sunday	8.00am	Holy Communion
	11.00am	Morning Service
4th Sunday	11.00am	Holy Communion
	10.45am	S club 11/Impact in the Scout Hut
5th Sunday	11.00am	Joint Benefice Communion

Ed the Ed

I hope that you were impressed by the silky new cover that we used in the last edition, plus the colour trial on the inside back page. (We got the photos of Miles from his criminal record file.) We will be trying some new 'production' things over the next few months that will continue with our aim to produce the best local magazine in the area. Watch these covers!!

Thanks to Bob Scanlan for his great work with this edition's cover, and of course, with the whole magazine, and to Kevin Thompson for taking the Whimble News Team through what was possible with the technology he has in his Wapping Road premises. Caxton, eat your heart out.

There are loads of things coming up in the village to attend and support – it's that time of year, when we emerge from the cold of winter into the warmer days of spring – such as finding lots of lambs in the fields with specially fitted 'BOING' legs as they leap around their mums and mates. It is a great source of entertainment for me and the current Mrs H (now walking the lanes sans panto script, my dears!).

Sue Wilson has an advert in this edition for a Barn Dance in the Blossom, and I would encourage you to go and support, as it is for a worthy cause. Sue is going to Kenya in August as part of a team that works with an international housing charity. Local people in Kenya are already involved in building their own houses – Sue will be going as a volunteer to work with them, and needs to raise money for both her costs and a donation to the charity itself. Anything with a bar and roast pork rolls has to be good for an evening out!!

The News team would like to thank the Parish Council for their very generous donation – it all helps with our costs for printing the magazine – thank you.

I see that Edith is reminding us that April 23rd is St George's Day, and I have fond memories of seeing John Shepherd wearing something red to celebrate that day, and encouraging everybody to do the same – he always felt that the English did not celebrate their patron saint with enough passion. Do it for England!!

I am delighted with the success of the school bus idea. I look forward to the natural extension into the 'pub bus' which I think would be welcomed, as a number of good people in the village often suffer from either memory loss as to where they live at the end of a convivial evening at a local hostelry, or the 'disconnected legs' syndrome (you know who you are!). The occupants could be roped together for safety, so even if you were to fall over, you would get home, albeit with a very grazed face – now that's a challenge to explain away!! I commend the idea to Emma Palmer.

Please continue to submit your articles to us, and if you want to have something included in our next edition, please get them to either Jim and Alison at the PO (thanks for helping us in this way) or direct through cyberspace to the Luke Skywalker look-alike, Bob Scanlan at bob.scanlan@eclipse.co.uk, by Monday 15th May.

Ed H

BOOK NOW
For
Easter!

**QUIZ NIGHT EVERY OTHER
SUNDAY**
Starts at 8.30pm
EVERYONE WELCOME!

The Thirsty Farmer

WHIMPLE, EXETER, DEVON, EX5 2QQ

Telephone: 01404 822287

TRADITIONAL HOSPITALITY AT ITS BEST

Varied A La Carte Menu changed daily
alongside traditional 'Farmers Favourites'

Great Selection of fine Wines

Open all day Friday, Saturday & Sunday

LIVE MUSIC DATES

- | | | |
|----------------|---|-----------------------------|
| Good Friday | - | Plan B (ex-Mid Life Crisis) |
| Fri 28th April | - | The Hurricanes |
| Fri 26th May | - | Naked Ape |



Whimble Post Office News



We are sure many of you who presently use the post office card account to access pensions and benefits have seen the news recently that the Government intends to withdraw this service in 2010. We have been asked by the National Federation of Sub Postmasters to reassure you that with your support there is still hope that this decision may not be final. Meanwhile we ask that those with card accounts continue to use them and should you become entitled to benefits in the future insist that you are paid so that you can access your funds from the post office. This action if taken by the majority could mean the difference between remaining open and closing to many small rural post offices.



Benefits due to be paid on Good Friday 14th April and Easter Monday 17th April can be collected from Thursday 13th April.

Our opening hours over the bank Holiday are:

- Friday 14th April - Closed
- Saturday 15th April - Open 9.00 -12.30 pm
- Monday 17th April - Closed
- Tuesday 18th April - 9.00 -1.00pm.



Post Office Postal Orders are being revamped this spring. Customers will now be able to buy a Postal order for the exact amount they want – anything from 50p - £250. The advantages to this are, increased security, quicker clearance if they are paid into bank accounts, and the option of printing the payee’s details on the actual order.

A great, safe way to pay for those purchases on e-bay !!

Thanking you all for your continuing Support.

· Jim & Alison

Another Nail

The BBC has just announced that it has decided not to continue using the Post Office to collect and administer the TV licence Fee. This is very disappointing news for us and will result in yet another loss of revenue. This will take place on 31st July – meanwhile please use us until then

FROM MY WINDOW IN THE SQUARE

Edith Marie-Louise Grout

And fairey month of waking mirth
From whom our joys ensue
Thou early gladder of the earth
Thrice welcome here anew
With thee the buds unfold to leaves
The grass green on the lea
And flowers their tender boon receive
To bloom and smile with thee

I find John Clare's poems from his Shepherd's calendar old fashioned and charming. Capricious April opens the curtain on the growing season once only in the year. Only once does the world around us show forth its hidden power. The bare trees show signs of life, then the leaves unfold and the blossoms on the fruit trees and flowers with their freshness are a delight to behold and the grass corn springs up in a fresh green. There is a sudden rush and burst outwards of hidden treasures. Of course April showers bring forth May flowers. This is the magic of April. Celandines and primroses, violets and golden dandelions appear like old friends. Translucent young leaves, blackthorn covered in delicate and glorious white blossoms. The countryside is transformed from the Winter bleakness. Here is the promise of warmth and growth and fulfilment. The hedges become busy with wild life once more - nesting is in full swing. Thrushes and blackbirds in the garden are busy and timidly singing. Hedge sparrows, house sparrows, robins, chaffinches and wrens fly around and find titbits of food in the grass

Oh to be in England
Now that April's here
And whoever wakes in England
Sees some mornings unaware
That the lower boughs and the brushwood sheaf
Round the elm tree bole are in tiny leaf
While the chaffinch sing on the orchard bough
In England now.

This year the Joyful Eastertide falls on April 16th and it is no wonder that Christians have chosen this festival of the Resurrection when everything around us is showing signs of a new life full of promise. April 23rd is not only Shakespeare's birthday, but also St. George's Day, Patron Saint of England and the Scout movement. St. George acquired legendary fame when he slew the dragon near Silena in Libya to save the king's daughter from being devoured by an evil monster and so became the symbol of the triumph of nobility over wrong waste and evil. This is quite a new legend I have read about not so long ago. April and May are when one hears the first cuckoo in Spring when he begins to sing his pleasant and repetitive notes without stammering. I must admit that the last year or so I have not heard the cuckoo at all, a sound which I miss. 6

The Merry month of May gets off with a festive start with May Day when traditional ceremonies are performed, symbolising the turning cycle of the year and ushering in Summer. Maypole dancing, itself a symbol of fertility, Jack in The Green representing Spring performed his ritual dance. In Oxford every year at 6 o'clock on May Day morning the choristers of Magdalen College greet the sunrise by singing a Latin hymn from the top of the tower and this is followed by a peal of bells and Morris dancing in the streets. Various religious festivals fall in May too - Whitsun, Rogation Sunday. I remember when we lived in Aylesbeare we were invited by our vicar to go to Farringdon and into the fields to bless the crops. On Rogation day just before Ascension the elders of the parish walked round the boundaries to mark their position. The cattle were blessed too and the machinery, all crowned with a service in church. Of course, there is the well known saying "Cast not a clout till May is out" It can be interpreted in two ways be it waiting for the end of the actual month of May or wait until the Maytree blossoms are in full bloom, they normally coincide.

Come queen of months in company
With all thy merry minstrelsy
The restless cuckoo absent long
And twittering swallows chimney song
With hedgerow crickets notes that run
From every bank that fronts the sun
And swathy bees about the grass
Which stops with every bloom they pass
And every minute and every hour
Keep teasing weeds that wear a flower.

In May, bluebells carpet the woods and in The Square there are still a few flowering round the brushwood of an old lime tree. Nesting is at its peak. Luckily I still have plenty of cover for the nesting birds to feel safe. The singing males are excelling themselves during the breeding season with their melodies of love. Almost all my garden birds are very territorial and the males proclaim their ownership by singing from a conspicuous vantage point. The dawn chorus I find is at its best in the first half of May, the birds become more silent as the Summer progresses. Butterflies will also start to grace the garden. Spring is my favourite season of the year. I always think so when I see the leaf buds on the trees bursting dramatically into green. A similar feeling comes over me in October as the leaves take on their vibrant autumn colours. Both of these seasons have their individual charm for me. In Spring all is lush and green, the predominant colour being green. Autumn has a passing beauty and a time to relax and contemplate. It is difficult to decide which is the best; all that is necessary is to enjoy the present in full.



The fair maid who the first of May
Goes to the field at the break of day
And washed in dew from the hawthorn tree
Will ever after handsome be.

Waves of Whimble

Joyce and Hayley have pleasure in announcing a new team member to the salon

SALLY

Qualified in unisex hairdressing, Advanced Colour Courses with L'Oreal and Wella

Available 'til 8pm Thursdays. Modern or Traditional – Long or Short.

She is waiting for your call

Open: Tues – Friday 9am to 5pm, Saturday 9am to 1pm. Late Night by appointment.

Free parking by kind permission of the Thirsty Farmer

TEL 01404 823400

Liberte

HOLIDAYS

...Your French connection South of France:

Long lazy sunny days in a beautiful French villa, with communal pool right on the Mediterranean coast.

Sleeps up to six and includes patio garden with barbecue. Satellite TV, washing machine, bike and roller-blade hire, wind surfing, kite surfing and sand sailing, as well as horse riding and go carting and on the edge of a nature reserve.

Situated near all major airports (Flybe, Ryanair, Easyjet) and airport collection available. Auto train to Narbonne from Calais; 10 min drive from motorway. Prices from £70 p.p./during July and August (price based on 6 people sharing). Also countryside B & B available and assistance with house searches and relocation available.

Please visit: **www.liberteholidays.com** or phone Janine or Paul on

00-33-468-44-12-08

WHIMPLE

The Perfect Village

“A great community, good amenities and excellent accessibility”



We have a constant stream of enquiries for property of all types in and around Whimple.

ASK FOR A FREE VALUATION

01404 814306

www.redfernsproperty.co.uk

Tim Wright

PTFA News

By the time this issue goes out you may have enjoyed the Family Easter bingo and the Easter Egg hunt. Many thanks to all who organised these events and all who made donations.

Paul and Gill at the New Fountain are very kindly running an Easter raffle. Many thanks for their support, and please have a go to help boost our funds.

We are very proud of the school's recent hard work in achieving excellent standards in the SAT results and the orchestra's win at the Devon Performing Arts Festival. Well done to Mrs. Brice and the wonderful teachers and support staff as well as the pupils. Well done also to Emma Palmer who has worked very hard to set up the walking bus. All of these things hopefully will help and inspire the children as much as it will the parents.

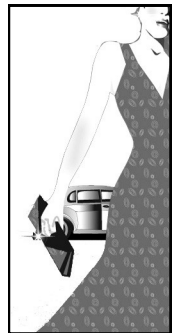
We are hoping to be working with the staff and governors on brightening up the playground in the near future, so watch out for parents waving paint brushes around.

The next event will be a rag collection on the 9th May and on the 27th May the Fashion Show will be in the Victory Hall starting at 7.30pm. Clear out all of your old clothes and get ready to restock with high street labels at bargain prices. Contact me or the school if you have old, clean clothes and bedding to donate.

Another reminder that Village Week will be from the 1st to the 8th of July. We would be grateful if any organisation wishing to be involved could let us know about their event as soon as possible.

Jenny Sanders

823015



Please use the Whimble Diary held in the Post Office for checking availability of venues and booking events.

If your Association has an event which you would like listed in Whimble News please contact Lynda Trevena on 822876 or e-mail:

lynda_amelia@hotmail.com

MILESTONE SERVICES

NATIONAL GARAGE WHIMPLE

Welcome to your new



best value locally

-o-

GROCERIES

FROZEN AND CHILLED FOODS - FRUIT AND VEGETABLES - WINES BEERS
SPIRITS- FRESH BAKED BREAD - HOT SNACKS AND DRINKS -
NEWSPAPERS - MAGAZINES & MUCH MUCH MORE

**LOOK OUT FOR OUR MONTHLY SPECIALS -SELECTED LINES AT
SUPERMARKET PRICES! (EG. 3 BOTTLES OF WINE FOR £10)**

-o-

JOIN OUR DVD CLUB

(MEMBERSHIP FREE) RENTALS FROM 99P

-o-

PAYPOINT AGENT

PAY YOUR BILLS - TOP UP YOUR MOBILE - ELECTRICITY KEY
CHARGING ETC

-o-

CASH MACHINE IN STORE

-o-

WE ALSO SELL CALOR GAS - COAL - LOGS - CAR CARE PRODUCTS -
GARDEN STONWARE & COMPOSTS.

FUELS AND OILS AT COMPETITIVE PRICES

-o-

LONDIS at Milestone - Best Value Locally

OPEN UNTIL 9PM

Telephone (01404) 822005

Whimble Primary School



Best Feet Forward

Whimble School is leading the field with its walking-buses, having launched the third one in March. It is the first school in Devon to launch three, all of which run (or walk) everyday. We are very proud of our achievement and enjoyed good press coverage for this launch, with photographers from both Express & Echo and The Midweek Herald supporting the event, and articles in both papers. There are now over 40 children regularly using the buses, nearly one third of all the children in the school. The new route starts inside the Church gate, then crosses the road to walk up the path by the P.O into Rectory Close, picking up passengers on the way before walking into school.

The buses are driven by trained volunteer parents who, along with all the passengers, wear high-visibility waistcoats.

We hope to reduce congestion through the village in the mornings by encouraging families who have to drive their children into the village for school, to park in the car-park behind the Square, and join the bus.

We still need more volunteers to help run the buses. You do not need to be a parent, or have a connection with the school. So if you can spare half an hour at least one morning a week please let me know

Please look out for the buses and help us to make the village safer for our children.

Emma Palmer tel: 823083



Whimble Victory Hall

Join us for our next

Soup and Sarnie Lunch

which will be on Saturday 20th May
from 12:00 noon to 1:30pm
in the Victory Hall





The Veterinary Clinic, Whimple

Consultations by appointment.

We also offer routine surgery and dental treatment.

Please call the surgery to arrange this.

Surgery times:

Monday and Wednesday: 8.45am - 9.15am

Monday to Friday: 4.30pm - 5.30pm

Saturday: 11.00am - 12.00noon

For an appointment and for all veterinary enquiries, please call 01404 823230

24 hour emergency service.

West One

Hair Design
01404 814 913

For Ladies and Gentlemen

3, The Old Village Hall, West Hill Road, West Hill,
(Nr West Hill Garage) **Free Parking**

West One would like to welcome **Mrs Julie Evans** (nee Shakeshaft) to our friendly Team.

Fully experienced

Working Thursdays and Saturdays.

Ladies cuts from £8.00

Men's cuts from £6.50

Children from £5.00

Our qualifications include Hairdressing NVQ 1& 2

Diplomas in: Toni & Guy advanced Technical Colouring, Colour Correction,
L'Oreal Colour Keys, Techniques 2000, Cutting and Perming.

Opening: Monday, Wednesday, Thursday, Friday & Saturday.

For an Appointment Please call **01404 814913** or Call in for Free Consultation.

Fairtrade



Delicious FAIRTRADE Cookies in WHIMPLE!!

Whimple Parish Church is relaunching the sale of FAIRTRADE goods in the village this spring.

TRAIDCRAFT's aim "FIGHTING POVERTY THROUGH TRADE " is achieved by selling the products of farmers and craft workers from over 30 countries in Africa, Asia and Latin America. These workers are supported through training, consultancy and information, as well as by Traidcraft & other development organisations talking to governments and big business about the need for change and ways to make it happen.

We hope to have a regular stock of Traidcraft food items such as Cafédirect 3065 coffee (inc. decaff), tea, Geobars and yummy treats such as Yoghurt Coated Raisins & Chocolate Brazil Nuts. We will also sell Muesli, and a selection of Sugars, Cocoa and Dried Fruits for baking as well as cards and other gift items. These will be available at the regular Saturday coffee mornings and after Church services –usually the 1 Sunday of the month Celebration Service and the 4 Sunday Communion service. We also plan to have a stall at the Church Fete in June.

TRAIDCRAFT also sells jewellery, accessories & clothes – including a new range of organic cotton, linen & silk – gifts for the home and garden & Fairtrade wine from South Africa, Chile and Argentina. These are all available from their catalogue (or online at www.traidcraftshop.co.uk)

We will be happy to take regular orders or special requests from anyone who is interested. If you would like to have a browse through a catalogue please pop into the coffee mornings or talk to Sarah Smith on 822123, Dy Beedell on 823675, or Maggie Spicer on 823640 – or catch us in the school playground!

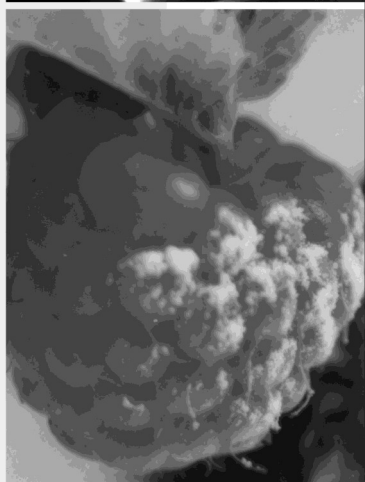
This is a really practical way to help people in developing countries work their way out of poverty – and their cookies really are delicious!!!!

whatever the occasion

The Jack In The Green Inn, one of Devon's finest restaurants, is pleased to support the village Magazine The Whimble News.

Our award winning food is prepared with the finest ingredients by our uncompromising chefs.

So from bar snacks to a la carte our sumptuous meals suit every occasion and celebration.



...we'd like you to come and see us

THE JACK IN THE
GREEN INN

Rockbeare, Near Exeter, Devon EX5 2EE.
Telephone: 01404 822240 www.jackinthegreen.uk.com

THE PENSION DRAWDOWN COMPANY

INDEPENDENT FINANCIAL ADVISERS

FOR UNBIASED, QUALITY FINANCIAL ADVICE BASED ON YOUR
CIRCUMSTANCES PROVIDING SOLUTIONS TO YOUR NEEDS
INCLUDING

SAVINGS INVESTMENTS PENSION PROVISION
RETIREMENT OPTIONS inc ANNUITIES
LIFE AND CRITICAL ILLNESS COVER INCOME PROTECTION

Contact: Bob Diamond at Waterlake Meadow, Church Road, Whimpe
On 01 404 822865 or Email r.diamond1@ntlworld.com
For a free initial consultation

Appointed Representative of The Burns-Anderson Independent Network PLC,
which is Authorised and regulated by the Financial Services Authority

Martha Mockford

Quality kitchens at affordable prices

*manufactured and expertly fitted by our own staff
better value for money than DIY stores*

Also re-fronts & new worktops
Carpets, vinyls and wooden flooring

Complete, friendly service from a local family business

Hotpoint, AEG, SMEG, Franke, Blanco



01404 44189



Talaton Inn

SUNDAY LUNCH - DAILY SPECIALS
BAR MENU AND SNACKS
RESTAURANT OPEN TUESDAYS TO
SATURDAY EVENING



**Good Ales, Good Food
Pop in and say Hello**

Tel: 822214

SOFT FURNISHINGS & TRADITIONAL UPHOLSTERY

Loose Covers to Recovers
Cushions to Footstools
Headboards to Bedding
Curtains—Blinds—Pelmet
Swags & Tails
And much more

Jo Harris 01884 277519

Trimeasy

*Your Local Interior Decorating
Service*

Our award winning company has the expertise to provide fast professional workmanship, including stripping existing wallcovering, surface preparation and hanging all types of paper. Ceilings, Skirting Boards and Door painting.

No job too big or small.

Free no obligation estimate.

*Contact Alec Janaway to discuss
your requirements.*

"Mellifera" Church Road
Whimble, Devon. EX5 2TF
Tel/Fax: 01404 823019

Bonjour everyone,

Well it has been a little while since you heard from the Ponderosa...uh...the south of France, but that shows that we have been busy and kept our heads down so to speak.

What has been on the menu? - Well for starters:

Paul was working at a house en route to the next village recently and suddenly heard an almighty bang... He 'flew' to the front of the house et voila yet another accident. They happen very very frequently here due to the excellent driving skills of the French.

Paul ran to the car, which was virtually upside down in a ditch adjacent to the house and had come to a 'standstill' against a wall inside the ditch. The engine was revving at full speed so he leant in through the broken car window, switched off the engine and asked the old man slumped inside Vous etes Mort???? (Which means are you dead!!!). He meant to say Vous etes d'accord??? (Which means are you alright!!!). Still, a small mistake to make if you don't master the language very well...

The old man piped up in French 'I don't think so'...Then again he may have thought that he was dead and just breathed a sigh of relief when he realised that St Peter on the gate actually spoke English!!! Have you all actually thought about this? If we indeed go all to a place called 'heaven' after we 'pass on', who is to say that we don't have to wade ourselves through whole hoards of Chinese speaking people, who very likely don't speak Dutch or English, which won't help in our search of our nearest and dearest who we, no doubt, all hope to meet again... food for thought!!! Mustn't stray though. The old chappie, who had the incident in the car turned out to be the father of president of the Chambre de Commerce in Carcassonne. He was about 95 years old, as blind as a bat, should obviously not be driving and was wearing his 'slippers' (pantouffles...), which might have explained his 'slip' of the clutch...Anyway...

The next day I was in the local Intermarche, which recently had a mayor overall, which has now brought it into the 20th century...

To mark this event there was a week of special events in the store. Of course I had forgotten all about this, as I am the person who refuses to be sucked in by special promotions, adverts and the like. Anyway we were expecting visitors for a meal and I had intended to buy some mussels for an aperitif. Nothing unusual in that except for when I nearly reached the fish counter I was suddenly grabbed by the arm by a weird looking chappie with a huge microphone, which was cordially thrust under my nose, whilst I was being asked what I thought of the price of mussels???

Is this guy for real I wondered, anyway when someone shoves a microphone virtually inside your mouth you feel kind of prompted to say at least something... so I muttered, 'Je ne sais pas' (I don't know) as I genuine didn't know what to say about this...The chap then proceeded to explain that he had just mentioned 5 min before that due to the 'special activitees' they now were on special offer and

virtually gratuity!!! So seeing that I was not too impressed by this (as mussels are normally quite cheap anyway) he proceeded to tell me that he would award me with a fantastic prize of a lovely set of crockery (it was awful actually!!!), if...I knew the question to his answer, well I didn't, as due to being on the other end of the microphone I could barely hear his question, anyway, by now I was desperate to shake this 'entertainer off' so once more my answer was...Je ne sais pas...Not impressed by this ignorant Foreigner, this chap then told everyone in the store that I could whisper the answer in his ear if I was not sure..., so I then whispered...Je ne sais pas in his ear...Help, all I wanted was some mussels, I was then abandoned in disgust and Madame so and so, who did know the answer, walked away with the 'lovely' set of crockery. (the answer by the way was 'Britain'!!!). You can't win them all.

Last Sunday some French friends of ours invited us to dinner. They had invited some other friends too who we know. We decided to car share, as it was an hour's drive. Nothing unusual I hear you cry. No,...except that luckily for us, we found out, just in time before this event that the person, whose car we were about to climb in, is virtually blind!!! Being not too impressed by the French driving skills anyway (and I am talking 120km/hour on a bendy 'B' road), we quickly offered to do the driving. What a clever move! It soon became apparent when this chap, who is the mayor of a nearby village incidentally, was reading the map and virtually had to hold the map into his eyes..., we realised even more how lucky we were when we during the dinner, dishes of banana and pineapple crudités were passed round to accompany the curry dish, and the poor chap didn't see what it was and put all the shells of a fish aperitif on top of the banana pieces...

We are getting accustomed to the French Sunday lunches now. They start at 12 and seem to finish at 6. Quite a long time you might think, but in France time flies and they always seem tremendous fun.

Since the floods of November and the unusually heavy snow falls end January, the region still looks like a war zone, with broken trees along the road, damage and whole trees still thrown alongside the river banks. We did wonder why no-one appeared to make an effort to clean up, but we were told last week that if anyone lifts as much as a leaf, the whole community loses the right to financial assistance from the government, before the exectorate has visited the region. So we sit and wait and look at the mess!

The weather has now taken a distinctly summery feel with temperatures well into the 20ties now, though today and yesterday we had to make do with 12 and rain...Everything is in blossom, and the birds are nesting everywhere. The village is waking up and the 'season' will soon start everywhere along the coast with the arrival of Easter.

C'est la vie en France!

We hope you are all well? And wish you all the best,

Janine and Paul

DC DECKING & JOINERY

Quality Carpentry Services

BESPOKE HAND CRAFTED GATES

- *FREE ESTIMATES*
- *MANY REDWOOD DESIGNS*
- *SUPPLY & INSTALLATION*
- *TOTAL SECURITY*

CARPENTRY

- *FREE ESTIMATES*
- *KITCHENS & BEDROOMS*
- *BUILT IN WARDROBES*
- *UPVC INSTALLATIONS*

Many years experience,

Fully Qualified

Large Portfolio

QUALITY DECKING SERVICES

- *FREE DESIGN & PLANNING*
- *QUALIFIED INSTALLERS*
- *TREATED MATERIALS*

JOINERY

- *HAND MADE GARDEN FURNITURE*
- *ANYTHING THAT NEEDS TO BE MADE OR REPAIRED*

For a friendly, efficient & professional service please contact our team

Telephone : 01404 822126

Mobile: 07980 889968

Email: dedecking@aol.com

CPM Plumbing & Heating



Your Local Plumbing
& Heating Service -

205961



Registered
Business

Repair & Servicing of Oil Gas &
LPG

Heating Systems Boilers & Appliances
Using Hi-Tech Analysing equipment

Fully Insured - All work guaranteed

No Job Too Small - Free Estimates

CORGI & OFTEC Registered for all appliances

For a friendly professional service call:

Gary Clarke

Phone: 01404 822523 Mob: 07812013434

Garlands 3 Dince Hill Close, Whimble

Aromatherapy



Therapeutic Massage



Hopi Ear Candling



Sally Baker C.H.Ed (Dip Mass)

(Dip Aroma)

Complementary Medical Association Registered

Whimble

Tel: 01404 822315

Mob: 07870 112071

email: salbaker63@hotmail.com

MASSAGE

in Whimble

FOOT MASSAGE

HEAD MASSAGE

BODY MASSAGE

(Half- or one-hour sessions)

Book your appointment with Lucy Ambler, Dip APNT

on **07808-720577**

A Vision for Whimple

Around 40 parishioners attended the open meeting on 2nd March to hear Rory Cunningham from the Community Council of Devon describe the benefits of producing a Parish Plan. A Plan is primarily a vision for the whole community which identifies the social, economic and environmental issues which are of concern to parishioners as a whole. It affords an opportunity to shape the community and influence community services and facilities and also the planning system, particularly in respect of affordable housing and production of a design statement. Parish Plans can also underpin bids for funding for future initiatives. It is essential that the whole community is involved in the production of the Plan and the Action Plan which would be incorporated in it.

There was general support from the meeting to proceed with a Parish Plan for Whimple and to seek grant aid for the project. A number of those present offered to serve on the Steering Group, but additional people will be required to ensure that there is representation from all sectors of the community. If you feel you can contribute to the Whimple Parish Plan process please contact Mike Ellingham on 01404 822945

In order to establish the main issues of interest or concern to parishioners prior to a questionnaire going to every household, there will be an 'open house' consultation event in the Victory Hall. This has provisionally been booked for Saturday 3rd June - please watch out for confirmation and try and find time to drop in to the Hall during the day.



Mike Ellingham



SOLICITORS

The Complete Legal Service for
families, individuals and businesses
throughout East Devon

We will visit you at your home if you wish

For further information and to arrange a
free initial consultation please telephone

**813446 (Ottery)
or 41221 (Honiton)
or David Smith on 822123**

HDR

Records & Pop Memorabilia Wanted

Good prices paid for the following

Records. CD's, Rock & concert Memorabilia

Tour Programmes/ Old Tickets/ Magazines/ Sheet Music



All types of music, large or small collections

Rock - Pop - 50's - 60's - 70's - Punk - 80's

John W Griffiths

Phone: 01404 823480

Mobile: 07836 369740

Email: hdicksrecords@yahoo.co.uk

WHIMPLE PARISH COUNCIL 2006 MEETING DATES

PLANNING

JANUARY 9th
FEBRUARY 6th
MARCH 6th
APRIL 3rd
MAY 8th

JUNE 5th
JULY 3rd
AUGUST 7th
SEPTEMBER 4th
OCTOBER 2nd
NOVEMBER 6th
DECEMBER 4th

PARISH

JANUARY 23rd
FEBRUARY 20th
MARCH 20th
APRIL 24th Annual Parish Meeting
MAY 22nd Annual General Meeting
and Re-election of Members

JUNE 19th
JULY 17th
TBA
SEPTEMBER 18th
OCTOBER 16th
NOVEMBER 20th
TBA

N.B. ALL THESE DATES ARE SUBJECT TO CHANGE.
ALL MEETINGS START AT 7.00PM

Quiz Night



on behalf of Kidney Research UK
and **Whimple Victory Hall**

7.30pm Friday 19th May

in the Victory Hall

Tickets £5 to include supper and soft drinks (BYO alcohol)

Available from Whimple Post Office

Further details from 822262 or 823614



★ DRAIN-WIZARD

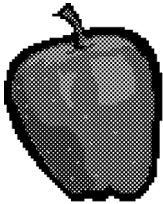
Pitch Fibre Specialists
Drainage & Light Plumbing Services

24 Hour Emergency Service

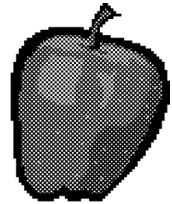
Blockages, Jetting, CCTV, Repairs, Lining,
Renewals, Septic Tank & Soakaway
Problems, Toilets, Ball Valve & Leaks

Tel: Whimble (01404) 822913

Mobile: 07815 064669



Berry Farm



Apple juice, Cider, Eggs, Pork,
Fruit & Vegetables

Please call Jenny on 01404 823930

Or visit us in Clyst St Lawrence

BARRY SEAFORTH DECORATING SERVICES

Est 1979



PAINTING WALLPAPERING
SPECIALIST FINISHES MURALS TILING
COVING CARPENTRY ALTERATIONS
REFERENCES AVAILABLE

Call Barry 01404 822928
Free Estimates
Jessamine Cottage, The Green,
Whimble



Little Cot
Hembury Fort
Honiton
Devon
EX14 3LE

Tel
01404 841699
Mobile
07976725516

M P SMALL ENGINES Mike Persey

SERVICE & REPAIR TO

**All makes and types of
Horticultural / Garden
Forestry and Small Agricultural
Machinery**

**Specialist in the repair of older
Machinery and Sports Club machinery**

Makeovers and rebuilds undertaken

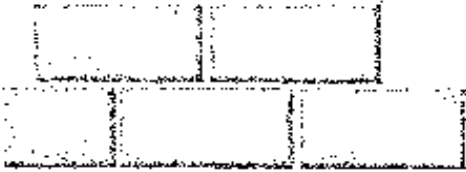
New machinery at competitive prices

Collection Service

TWW BUILDING SERVICES

EXTENSIONS, PATIOS, PONDS,
STONEWALLS, FIREPLACES
PAINTING ETC.

Bussells,
Clyst Hydon
EX15 2NF



Tel: 07749 715187

CHAIR CANING
RUSH SEATING
SKEINED WILLOW



Tel: 01404 822422

Higher
Slewton
Whimple

Rosemarie Burrows

Tree & Hedge Planting & Aftercare ●

Contract Work ●

Garden Maintenance ●

Herbicide Application ●

Chainsaw Crosscutting ●

Strimming ●

Brushcutting ●

Call Daniel On:
07974 385834



DRM
WILLIAMS
TREES & GARDENS

WORKING WITH
PERRIE HALE
FOREST
NURSERY



SLACK MA GIRDLE

for
Ceilidhs, parties, weddings,
Christmas sing-a-longs.
The local band
for all occasions

Tel 823083

 Not as interesting as Granny's!



Paul Seager

BS(Hons) BCEng MRICS MiFireE

Architectural Services,

Plans and Designs

- * **Plans & Specifications**
- * **Building Regulations &**
- * **Planning Applications**

Telephone 01395: 232501



Heritage Taxis

At your service

01404 81 55 44

07891 72 55 36

Proprietor: Gavin France

MIRACLE MANICURES



**BEAUTY FOR
THE HANDS AND FEET**

COMPETITIVE RATES

ABBY PORTER

01404 823875

Tom Vanneck

Furniture Restorer

&

French Polisher

**Modern & antique
commissions undertaken.**

Tel. 01392 860502

Mob. 07812810846

St Mary's Church Whimple

GARDEN FETE



Saturday 10th June

2:30pm

**HINDSTRETE
Church Road**



Cream Teas . Stalls . Competitions

Admission Free

Parking available

In Victory Hall if wet

Whimble History Society



An Exhibition Celebrating 60 Years of Muffin the Mule

This Summer, Whimble History Society is staging a fascinating exhibition to celebrate the 60th anniversary of Muffin the Mule who first came to our television screens in 1946.

Whimble claims a connection with Muffin the Mule, as Ann Hogarth and Jan Bussell who created Muffin, retired here in the 1970's. Despite being retired, they gave enjoyment to many local residents when they performed puppet shows at 'The White Barn', their Whimble home. They had been top puppeteers since the 1930's and had toured with their 'Hogarth Puppets' all over the world.

Their most famous puppet was Muffin the Mule, who had his own television programme between 1946 - 56.

This anniversary exhibition gives visitors the chance to learn about the story of Muffin and the puppeteers. There will be many interesting images to see of Muffin, his puppet friends and the people who created him. On display will also be vintage toys, books and more, depicting Muffin and his friends.

In 2005 Muffin returned to our screens in animated form, along with many of his animal co-stars. Images from the new BBC programme will also be on display.



Whimble History Society is also proud to announce that visitors will be able to see the original Muffin the Mule puppet, along with a selection of his puppet friends at the exhibition on the following dates: Monday 17th April (Easter Monday), Saturday 8th July (Village Day) and Monday 28th August (August Bank Holiday Monday).

This is an exhibition of interest to all ages, whether you remember the original Muffin, or you are a fan of the new Muffin and didn't realise how old he really is!

The exhibition will take place at Whimble Heritage Centre, Lockers Linhay, Church Road (in the car park of the New Fountain).

The History Society is also interested in hearing from people who attended any of the puppet shows put on at the White Barn and there will be a book for people to record their memories of these shows at the exhibition.

Other temporary displays this year at the Heritage Centre will include the history of the Milestone Garage, historical businesses in Whimble, the story of the murder of PC Potter and the history of Whiteways farm. There is also a photographic display of Whimble residents when they were very young – see if you can guess who they are!

The Heritage Centre and all exhibitions will be open from 1st April 2006 on Saturdays and Bank holiday Mondays between 10am – 3.30pm, and Wednesdays from 2 – 4pm until 30th September. Entry is free although donations towards the upkeep of the Centre are always welcome!

Naome Glanville



MAKE POVERTY HISTORY

This appeared in What's on in the last issue but as the date was April 1st, it seems this may have been an April fool joke. However it was the slogan of the campaign of a Coalition of 540 organisations to change economic policies to make the world much fairer for the world's poorest people and to achieve one of the Millennium Development Goals. So- what was achieved?

It received considerable support. 87% of our population heard about the campaign; 250,000 people held a Rally in Edinburgh last July at the time of the G8 meeting; Nearly a million people signed a petition voting for Trade Justice. The rich G8 countries promised to increase Aid by \$48 billion by 2010; they also promised to cancel the debts of 18 highly indebted countries due to the three largest multilateral agencies.

What remains to be done? They need to honour their promises on cancelling debts without attaching conditions, and they need to include another 44 countries also needing relief. The increase in aid is needed now, not in four years time. Most of all they need to make trade fair.

At present it is grossly unfair because we erect tariff barriers against processed goods from developing countries; we also subsidise farmers (mainly multinational companies and rich landowners) so that our exports are dumped on developing countries, thus undermining local producers and causing unemployment. The Department for International Development has issued a readable booklet entitled 'Trade Matters'.

Anyone wanting further information can write to the World Development Movement At 25 Beehive Place London SW9 7QR.

Aubrey Curry





Feet First

Reflexology

Joanne M Hicks MIFR

Registered Practitioner

Trowdon, Whimble

01404 822884 0777 5828677

jomhicks@aol.com

PETER SALTER A.I.R.T.E.

MOBILE MOTOR ENGINEER

(Member Institute of Road Transport Engineers)

Servicing & M.O.T. Preparation

Engine Overhauls & Bodywork Welding

Cars & Commercial Vehicles

Telephone: Whimble (01404) 823054



LOWER SOUTHBROOK FARM

Holiday Cottages

Southbrook Lane

Whimble

Exeter

EX5 2PG

Tel:01404 822989

Summer Holidays
*

Winter Breaks



"Enjoy the peace and quiet of the Devon countryside space for the children to play"

Central Heating
*

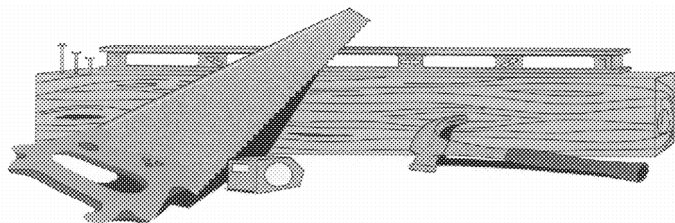
Colour Television
*

Swimming Pool
(Heated May to Aug)



Proprietors
Angela &
Stuart
Lang





fencing, pergolas, gates, trellis
and sundecks.

01404 823002

free estimates and over 25 years of quality
workmanship
also patios, and brickwork.

**P. R.
S
M
I
T
H**

For all your daily requirements
of
**MILK, CREAM, EGGS, FRUIT JUICE,
NEWSPAPERS & MAGAZINES
POTATOES, FRUIT & VEGETABLES
PET FOODS & REQUIREMENTS
AVAILABLE AT COMPETITIVE RATES**

Delivered to your door

Please contact

**VICTOR AND MARIAN DANIEL
Summerbridge, Whimble, Devon
Tel: Whimble 822458**



**FOR ALL YOUR
SEWING REPAIRS
&
ALTERATIONS**

No job too small

Also dressmaking, table linen
& Personalised machine
embroidery



Call Molly on

Office. Tel 01392 460970
or 07748 985830 evenings,
Wednesdays or Sundays.

14 Bramley Avenue, Off Lower
Hill Barton, near to the Met Office

**Chimneys
Wood Burners
Fires**



Swept, Installed, Repaired,
Lined and Built
"All your chimney needs"

Alf Butler

Tel: 01404 841611

A fully insured and HEATAS
registered Company

Compassworks

MOOR THAN NAVIGATION

WOULD YOU LIKE TO:

Learn to map read / develop existing skills?

Learn by practical experience?

Learn from specialists in a friendly atmosphere?

Know more about GPS and Navigational Software?

Find out what else COMPASSWORKS has to offer?

Tel: (01566) 783236 / 07711 055961

www.compassworks.co.uk

WHIMPLE AND DISTRICT VILLAGE PRODUCE ASSOCIATION

Despite the very cold weather, the first event of the year on Tuesday 28th February 2006 was a very well attended meeting where Mr P. Cantrill, the owner of the Dayspring Plants Nursery, gave a very enthusiastic talk on plants that are suitable for Whimple Gardens. Many interesting topics were covered and members even learnt how to divide their plants by using a bow saw!!! So successful was the evening that we have been asked to do some more. If anyone has any suggestions for an evening talk that they would like us to consider, please let us know and we will try and find a suitable speaker.

Our next event will be our Spring Plant Sale and Coffee Morning. This will be held on Saturday 13th May, 10.00 am till 12.30 pm in the Victory Hall. We are hoping to have a good range of bedding and vegetable plants including, geraniums, begonias, bizzzy lizzies, marigolds, petunias, tomatoes, beans (runner / broad), lettuce, courgettes, marrows, and weather permitting many more. There will also be some flowering shrubs and hopefully something for everybody's garden. At vast expense we have invested in some plant labels so this should help you know exactly what it is you are buying and to help us know what exactly we are trying to sell you!! So don't go rushing off to the garden centres just yet as you never know just what bargains we will have for you!

We have had two meetings to sort out the schedule for this year's flower show and we are hoping to have these available at the spring plant sale. The Show is on Saturday 12th August and there will be new arrangements for submitting the entries this year so look out for the details in the next edition of the News. We are very grateful to Edith Grout who has very kindly agreed to judge the flower Arranging Classes this year due to Jill White being unavailable. Details of the Flower Arranging classes will certainly be available at the coffee morning as will the details of the Photography Classes.

We are still looking for suitable locations to create more colourful areas in the village. We will be looking to get sites planted up with some spring bulbs about September time so if you would like somewhere to be considered, please let us know.

We look forward to seeing you all at the plant sale and if you have any queries about what to enter or even how to enter the Flower Show, just come along to the Village Hall on Saturday 13th May.

Paul Wilson

Hon. Secretary.



Simon Turner

Independent Financial Consultants

Penraddon

Hand & Pen

Whimple

EX5 2PX

For

Independent Advice

on Pensions

Mortgages

Investments

Life Assurance

Inheritance Tax Planning



Tel : **01404 822587**

For free initial consultation

What a Difference a Week Makes

I finally had a chance to watch the **Whimbletons' Panto** in all its glory as a member of the audience this year! After 3 years of stage managing i.e. running around with props, lifting heavy bits of scenery, bossing all the luvvies around, (it's a dirty job, but someone's got to do it), sticking safety pins in Ed to keep his costume together (it's a dirty job and I had to do it), I decided to watch from the other side of the curtain.

I attended the Saturday night performance, which was a full house as usual. Fantastic performances from the cast and I must say the children's scenes were brilliant – so enthusiastic and some great characters. Costumes were great, as we've come to expect from Carol and her team, and the scenery was fantastic (complete with working windmill on the back wall!)

I thought those Thompson girls deserved the Laurence Olivier awards that I'm sure they'll be receiving next year!

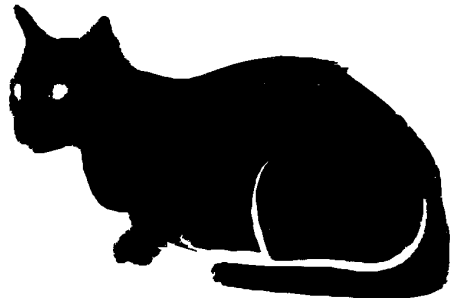
I thoroughly enjoyed the show (and the cakes supplied at the interval by the PTFA). Long may the Whimbletons perform!

When I was asked to write a piece about the panto, little did I know that within a week, I'd be sitting in the same place, watching a totally different performance. Kev had spotted the advert in the last Whimble News for the **Charlie Hearnshaw Quartet**, organised by "Villages in Action" and decided to buy tickets at the last minute.

What a treat! An amazing repertoire made up of jazz classics, samba, reggae and even classical arrangements performed by the quartet consisting of a sax, double bass, drums and semi-acoustic guitar. I haven't attended a 'Villages in Action' event before, and can't understand why it's taken me so long! For just over a fiver, we were entertained by an outstanding professional band for 2½ hours, beer was flowing and we didn't even have to get in the car!

The variety of events at the Victory Hall never ceases to amaze me and I'll be looking out for what's on next

Brigid Thompson



EXETER CARAVAN CENTRE

For Sale - pre-owned caravans
also caravans sold on owners behalf.
Caravans always bought and sold.

01404 822116

or

07985399

London Road, Whimble



OAKS & PARTNERS

AUCTIONEERS & VALUERS

invite entries for their regular sales of antique & later furniture, porcelain, silver and plate,
jewellery, metalware, paintings & prints and items of general interest at

The Old Tannery, Exeter Road, Cullompton

[We're easy to find on the Honiton side of Junction 28 of the M5]

The saleroom is open for receipt of items for sale
Monday to Friday between 9.00 am and 4.00 pm
Bring items along for valuation on a Friday morning

We will be pleased to call to your home
to discuss valuations without obligation or collect items for sale
Individual items to full house clearances

Tel 01884 35848 for further details or **01404 - 814540 / 812356** after hours
We will attend Sandfords, Whimble (by kind permission of Mrs Pratt) from 10.30 to 11.30am
on the first Wednesday of each month to discuss valuations or collection of items for sale

Sale catalogue can be seen on <http://www.invaluable.com>

e-mail address roger.shenton@btclick.com



Longfield Cattery

heated single and double chalets
personal care and attention



(now also looking after small animals)

01404 822275

Longfield ~ Church Road ~ Whimble ~ Exeter ~ EX5 2TF

"Learn a life skill with a Professional"



J.C.Ball



Driving Standards Agency Approved Driving Instructor

- FREE:- First hour for beginners
- FREE:- Loan of Videos and Books
- FREE:- Pickup in Exeter & East Devon

2 Manley Close
Whimble
Devon
EX5 2UG
(01404) 822764

Refresher and Motorway Lessons

"Safe driving for life"

WHIMPLE PAROCHIAL CHURCH COUNCIL

EASTER SERVICES

9th April Palm Sunday. Service at 11.00am
13th April Maundy Thursday Service at 7.30pm
16th April Easter Sunday 8.00am Holy Communion
11.00am Family Communion.

CHURCH TOWER

We are enormously grateful to those who contributed and made it possible for the much-needed work on St Mary's church tower to be carried out.

The main works included removing the old roof coverings and laying a new lead one, renewing a substantial amount of the stringcourse and repointing the stone work at the top of the tower. Many other smaller but necessary works were also carried out.

It is good to see, now that the scaffolding and plastic 'greenhouse' has been removed, the newly restored tower with its re-gilded clock face (in memory of Henry Stephen) and know that the tower will be good for many years to come.



Whimple Church Number Cruncher

To anyone who has not obtained a copy yet, the Number Cruncher is a 'quickie quiz' purely for fun to help raise funds towards Just 10 Devon.

A £25.00 prize will be awarded for the first correct entry drawn and a £10 prize will go to a 'lucky' entry taken from all returned sheets, irrespective of whether complete or not, as long as it has a name and address on it.

Good luck to all having a go - you have until 20th April 2006 to think of the answers.

For further information please contact

Jane Clements, Trow Farm. Whimple 822181

WHIMPLE WOMEN'S INSTITUTE

At the February meeting David Williams talked on his 'Life as an Auctioneer' and entertained members with stories of the auction rooms. By way of contrast, the speaker at the March meeting was beautician, Linda Finley, who advised us on making the best of ourselves!

Whimple will host the Group Meeting on 15th May when Elizabeth Thurgood will be the speaker. For the competition members are asked to explore their personal archives to find the best pre 1914 photograph.

In the third round of the skittles competition Whimple lost to Pinhoe. Several members attended a Hawaiian Lunch and reported an excellent event.

In addition to the informal craft afternoons which continue to be held on a Wednesday, three day schools have been arranged with subjects ranging from pressed flower design and sugar craft, to making a quilt in a day.

Twelve members expressed interest in attending a course at the WI's Denman College, as a result of which it has been decided to apply for a grant under the 'Awards for All' scheme.

The WI offers a varied programme of activities and we are always pleased to welcome new members to our meetings held in the Victory Hall on the second Tuesday of the month. For information please contact Ann Bowden (823450).

Rosemarie Burrows



Registered Charity No: 1035316

The staff, parents and children of Whimple Pre-School would like to thank everyone who supported the Quiz & Curry night in January. The evening was a great success and managed to raise £345 which will be used to purchase some new equipment.

Your generosity is once again very much appreciated.

Thank you!



Reg no: 4094



O'DELL PLUMBING & HEATING

Tel: 01404 811773 Mobile: 07974 818833

FOR ALL TYPES OF GAS AND OIL HEATING INSTALLATIONS.

BOILER SERVICE, REPAIR & BREAKDOWNS.

BATHROOMS & SHOWERS.

UNVENTED HOT WATER SYSTEMS.



Garden Design and Construction
from a single border to a total make-over

Golden Leaf
L a n d s c a p e s

Louise Turner N.D. Hort

Robert Mogridge R.H.S. Cert Hort

Tel 01392499074 Mob 07811781137

e-mail: info@gardenlandscapes.co.uk

www.gardenlandscapes.co.uk

**A PROFESSIONAL SERVICE WITH EXPERT PLANT ADVICE
FREE CONSULTATION**

10 nights of timeless principles for real life

Just10 Devon is running from 26th April to 28th June, **every Wednesday evening** 7.45 – 9.15 pm at **Crealy Park** in the Events Meadow. These are evenings of music, video interviews and talks from one of the U.K.'s best communicators, J.John. He has been described as refreshing, humorous, passionate, accessible, dynamic... and most of all down to earth. Come and see if you agree!

You may not yet have been to one of these evenings which began at the end of April, but, there are several more to come and you are warmly invited to attend.

More details of the content of each evening can be found on the posters you will see around the village or in the church porch and if you would like transport to Crealy then please ring:

Sarah Smith (822123) or **Rob Wilkinson** (822521)

Tiverton & Honiton Conservative Association

In Support Of

THE WHIMPLE HISTORY SOCIETY

Quiz Night

7:00 p.m. Friday 28th April

Whimple Victory Hall

Ploughman's Supper

£6.00 per head

4 members per team. Charity Raffle Licensed Bar

For more information please contact Mr. Peter Bowden,

C/O Tiverton & Honiton Conservative Association,

31 Bampton Street, Tiverton, EX16 6AH

01884 258166

PETER COSSLETT

**CARPENTER AND BUILDER
QUALITY WORKMANSHIP**

**KITCHEN FITTING
DOORS AND WINDOWS
TIMBER CONSERVATORIES
EXTENSIONS AND MINOR
BUILDING WORKS
COMPETITIVE PRICES**

&

FRIENDLY SERVICE

Tel: Whimble (01404)823279

Mobile: 07768 436042

S.H. DANIEL

ELECTRICAL CONTRACTOR

CROCKERNHAYES

WHIMPLE

PRIVATE ADDRESS

Malham House

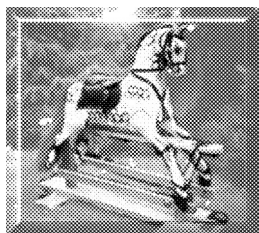
Awliscombe

Devon



BANFIELDS

*Traditionally carved rocking
Horses & Restoration*



*18 Rectory Close, Whimble,
Devon EX5 2UF*

Tel 822162

E-mail Banfieldgew@msn.com

D.C. DECORATING



**All types of
Interior and Exterior
Decorating Undertaken**

**By Dan Clark - Qualified Painter
and Decorator**

**FREE ESTIMATES AND FRIENDLY
SERVICE**

Telephone: 07780 594 520

WHIMPLE TENNIS CLUB

Following the AGM on March 15th, revised Constitution and Rules were posted on the Club house notice board. Tennis Club members are reminded that subscriptions are payable by May 1st. Subscriptions are unchanged at £20 per adult, £10 per Junior or £45 for a family. Please call Judith on 823240 for a membership form, especially important if details are to be changed or added, e.g. email address. Important dates for 2006 are:

Thursday evenings **May 4th, 11th, 18th and 25th** from 7.00 to 9.00pm

To kick off the season, four 'roll up' evenings, at which senior members old and new can meet and play informally

Thursday evening **June 22nd** from 7.00pm

The summer evening social – friendly mini-tournament with food and drink! (seniors)

Working party – the chance to do your bit to tidy up the court and surrounds:

Sunday 23rd April, 10am to 12noon.

May also meet Sunday 30th April, depending on work done on the 23rd.



'Wacy' update

Whimple Action Committee 4 Youth !

I'm sure many youngsters will be pleased to know that regular meetings are being held, and decisions made, regarding future facilities for them.

The Parish Council have agreed that the Parish field should be utilised and our first project is hopefully to construct a tarmac track for Cycling, Roller Booting, Skate Boarding, Jogging etc.

We are thrilled that materials are very kindly being donated by 'Aggregate Industries', but now we desperately need advice and help regarding designing, surveying and laying the track. Please, please if you can help with this, or are interested in any way, come along to our next meeting at the Thirsty Farmer on Tuesday 25th April at 7.30pm or contact **Liz Silk** on 822357.

"Some Enchanted Evening"...



BARN DANCE IN THE BLOSSOM.



In aid of Habitat for Humanity

Dance, Play, Eat, Drink or just Relax and
"Restore your Soul" under the Scented Pink Blossom.

Live Band and Caller
Bar
Roast Pork Rolls or veggie option
Raffle

Also
Best Dressed Hat Competition
Theme:
"Fresh Fruits of the Earth"

6 pm Saturday 20th May

Ticket price includes food:
£6 adult, under 14's £3, under 3's free
50p refund on ticket price for each entrant to competition!

At: 1 Higher Woodhayes Farm
Woodhayes Lane

Tickets from the Post Office or Sue Wilson

Very limited parking, please walk or park at the loading bay at Lower

EASY TO FIND LOVELY VIEWS

Alec and Christine Janaway

Tel/Fax: 01404 823019

Email: BandB.Busybee@Virgin.net



BED & BREAKFAST

B
usy

*A warm welcome awaits at
"Mellifera" Church Road*

WHIMPLE Exeter

East Devon EX5 2TF

& Ideal for Coast, City or Airport

Transport to - from
Airport by arrangement
Private/Holiday Car Parking

B
ee

En-suite Rooms

*Guests Day Room with
Excellent Facilities*

£16/£18-Cheaper for longer stays & Senior Citizens
1/2 mile Train or Bus

"FLORAL ENCHANTMENTS"

Designer:

Morven Fletcher

Flowers for all occasions

Floral designs to your
specification

Specialist in Wedding Floristry

Bodley Bridge Cottage
London Road,

01404 822049

**Historic
Buildings**

**Advisor on Conservation Repair /
Sympathetic Alterations**

**Vernacular Buildings-
Assessment, Proposals & Options**

**Listed Buildings-
Planning Applications**

**&
Building Regs**

**Michael Board
Building Consultancy Ltd**

**Modern
Buildings**

Little Cot
Hembury Fort
Honiton
Devon
EX14 3LE
Telephone
01404 841699

**Design Service for
New Build Home
Projects**

**Extensions and Alterations to
Properties-
Designed & Drawn for
Planning/Building Regs**



TAYLOR MADE DRIVING

Beginners

Pass plus

Pre 17 lessons

Refresher lessons

Diamond advanced driving

Motorway driving

Theory & Hazard Perception Tuition

Male & Female instructors

High 1st time pass rate

Patient, Friendly & fun tuition

A local independent driving school

Teaching local people to

“DRIVE FOR LIFE”

CALL FREE 0800 652 66 69

Andrew & Jill Taylor



What could you do with ten minutes of your time?

'The Mortgage Makeover'

Ten minutes is all it takes to determine if you're paying too much for your mortgage.

Ten minutes is all it takes to see whether we can save you thousands of pounds.

Ten minutes is all it takes to decide whether you can afford to pay your mortgage off early.

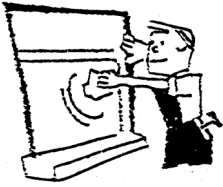
Ten minutes is all it takes for impartial, independent financial advice.

Contact Stephen Clare on 01404 823375

or email – stephenclare@thinkpositive.co.uk

or by post - Longfield Whimple EX5 2TF





WINDOW

CLEANER

PAINTING & DECORATING

TILER

PATIO PRESSURE CLEANING
SHED ROOFS - RE-FELTED
GENERAL HANDYMAN

(Excellent references if required)

For that personal service

Phone Mr Evans on 01404 822120

ARK POTTERY

STUDIO, SHOP & GALLERY

Wide choice of affordable pottery direct from the potters, all designed and made on site. Also sculptures, pictures and cards.

ENTRANCE & PARKING FREE

- Have a go on the wheel!
- Pottery Parties
- Team Building Groups
- Commissions

Find us just off the Ottery/Sidmouth Road at Wiggaton (follow the brown tourist signs from Ottery.)

OPEN DAILY 10 a.m.- 5 p.m.

Tel. 01404 812628

email:ark.pottery@btoopenworld.com

N C HAMLYN

FARM MACHINERY
REPAIRS AND SERVICE

(Welding, fabrication etc.
and garden wrought iron work)

Workshop facilities and mobile
service

Contact Nigel Hamlyn on 01392
466720

or 07702 431244 (mobile)

Paynes Farm
Broadclyst

M.J.COLES ENGINEERING

(R.T. I.T. B. & CITY & GUILDS)
SERVICING. ENGINE RE-BUILDS .
WELDING MOT. RECOVERY.

PICK UP SERVICE

FRIENDLY LOCAL MECHANIC
15 YEARS EXPERIENCE

FOR ALL YOUR MOTORING NEEDS

CALL

MARC

ON

WHIMPLE 822095 OR
07785 740473 (MOBILE)

THE BARBER SHOP

31a Mill Street, Ottery St. Mary
Tel No. 01404 811191

- Quality traditional barbering
- Modern hairstyles for teenagers and the younger man
- A childrens area

are offered by Petra Moore, the new owner, who is a qualified hairdresser with 13 years experience of gents haircutting.

Open Tues. – Sat. inclusive. No appointments necessary



JOIN US AT

ANDY'S RESTAURANT



PART OF THE INTERNATIONAL SWIMMING SCHOOL, STRAIGHTWAY HEAD, WHIMPLE

A LA CARTE MENU

BAR SNACKS

PARTIES CATERED FOR (UP TO 30 PEOPLE) - CREATE YOUR OWN MENU

SUNDAY LUNCHES

CHRISTMAS PARTIES

BOOKING ESSENTIAL!

ALSO ASK ABOUT OUR WIDE RANGE OF ACTIVITIES INCLUDING:

ADULT SWIMMING LESSONS, AQUAFIT

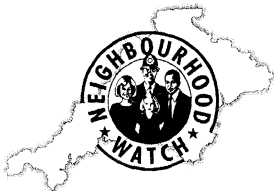
CHILDREN'S SWIMMING LESSONS, MOTHER & TODDLER SESSIONS, CHILDREN'S PARTIES

SAUNA, SOLARIUM

AND NOT FORGETTING OUR 'NATURE'S WAY' BEAUTY CLINIC WITH A FULL RANGE OF TREATMENTS INCLUDING MASSAGES, WAXING, AROMATHERAPY, FACIALS, MANICURES ETC.

TELEPHONE NOW ON: **01404 822196**

OR CALL IN AND HAVE A LOOK ROUND!



IF ENOUGH PEOPLE FOLLOW THESE TIPS, IT MAY WORK

TIPS FOR HANDLING TELEMARKETERS & SENDERS OF JUNK MAIL

(1) Three Little Words That Work !

The three little words are: "**Hold On please...**" Saying this, while putting down your phone and walking off (instead of hanging-up immediately) would make each telemarketing call so much more time-consuming that boiler room sales would grind to a halt. Then when you eventually hear the phone company's "beep-beep-beep" tone, you know it's time to go back and hang up your handset, which has efficiently completed its task. These **three little words** may help eliminate telephone soliciting.

(2) Do you ever get those annoying phone calls with no one on the other end?

This is a telemarketing technique where a machine makes phone calls and records the time of day when a person answers the phone. This technique is used to determine the best time of day for a "**real**" sales person to call back and get someone at home.

What you can do after answering, if you notice there is no one there, is to immediately start **hitting your # button on the phone, 6 or 7 times**, as quickly as possible This confuses the machine that dialled the call and it kicks your number out of their system. Gosh, what a shame not to have your name in their system any longer !!!

(3) Junk Mail Help:

When you get "ads" enclosed with your phone or utility bill, for example return these "ads" with your payment. Let the sending companies throw their own junk mail away.

When you get those "pre-approved" letters in the mail for everything from credit cards to 2nd mortgages and similar type junk, do not throw away the return envelope.

Most of these come with postage-paid return envelopes, right? It costs them more than the regular 23p postage, "IF" and when they receive them back. So it's up to you.

It costs them nothing if you throw them away! The postage is around 32p minimum, and it is dependant on the weight. In that case, why not get rid of some of your other junk mail and put it in their postage-paid return envelopes.

If you want to remain anonymous, just make sure your name and details are removed on anything you send them. You could even send the envelope back empty to keep them guessing. It still costs them money!. If you didn't get anything else that day, then just send them their blank application back! The banks and credit card companies are currently getting a lot of their own junk back in the mail, but folks, we need to **OVERWHELM** them. Let's let them know what it's like to get lots of junk mail, and best of all they're paying for it...Twice!

Let's help keep our postal service busy since they are saying that e-mail is cutting into their business profits, and that's why they need to increase postage costs again. **You get the idea ?**

John Munslow 01404 823456

Inspections - Pruning - Felling - Replanting

Major Tree Services



APPROVED
CONTRACTOR

01404 822993

www.majortreeservices.co.uk

**JULIAN
WILSON**
Electrical Contractor

1 Higher Woodhayes
Farm
Whimble

**Your Friendly local
Bed and Breakfast**



**David Brown
Holway Barton
Whimble
Exeter**

Telephone: (01404 822477)

Visiting Practice

Day and evening
Appointments by arrangement

QUALIFIED



CHIROPODIST

BOB SHEEHAN MSSCh MBChA

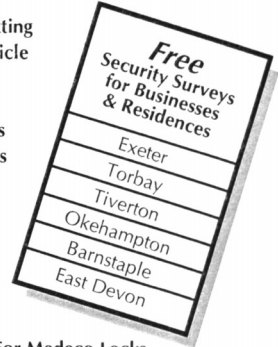
**3, Railway Cottages
Whimble
Exeter**

01404 822372

Complete Locksmithing Service



- 24 Hour Emergency Service
- Standard & Computerised Key Cutting
- Duplicate Keys Cut For Any Vehicle
 - Car Transponder Keys Cut
 - 24 Hour Lock Out Service
- Replacement Lock Installations
- Aluminium & Upvc Door Locks
 - Master Key Suites



MASTER LOCKSMITHS

- Free Security Assessments
- Locks Supplied & Fitted
- Safes Opened
- Burglar Alarm Installations
- CCTV Systems



Agents For Medeco Locks



01392 411887
FAX 01392 424817

A Wide Range of Security Products Available For Demonstrations At...

- 131 Sidwell St. Exeter EX4 6RY
- Unit 1, The Space Place, Alphinbrook Rd. Marsh Barton, Exeter.

www.guardian-security.sagenet.co.uk



Ford Simey

Solicitors

Make a Will

**and we will donate half our costs to your
Church or a charity of your choice**

**For a straightforward Will we charge £80 and for husbands
and wives "Mirror Wills" we charge £100 plus VAT.**

We will donate £40 and £50 respectively

For full details call

Victor Donson on 01392 274126

8 Cathedral Close, Exeter EX1 1EW

www.fordsimey.co.uk

PARTY TIME?

**Family Celebrations,
Milestone Anniversaries**

Marquee de ParTee

**Pretty Party Marquees and
Pavilion Tents hired for
*Your Special Occasion***

**Complete service for tables
chairs carpets lighting etc.**

**introductions to
Caterers & Hogroasters**

Philip & Angela Crisp

Kennford, Exeter.

01392 83 27 75

OR Visit us at:

www.marquee-de-partee.co.uk

The Jays



The Square, Whimpe. EX5 2SL

Jan and John offer a friendly and relaxed stay at the Jays.

Close to Exeter Airport for which transfers are available

Colour TV in all bedrooms

Guest Lounge with tea/coffee.

Several local Pubs and Restaurants within easy reach -(pick up service)

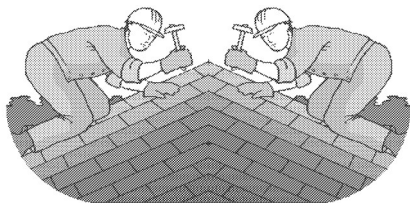
Bed and full Breakfast menu:

£18:50 per person per night.

No smoking preferred

Phone: 01404-823614

Fax: 01404-823629



DEVON COUNTY ROOFING

ALL YOUR ROOFING NEEDS

SLATING, TILING AND FLAT ROOFING

OVER 35 YEARS EXPERIENCE

ALAN BAKER Tel: 01404 822164



DEVON HOME IMPROVEMENTS

LIMITED

“Why Move - Home Improve”

Your local home improvements specialists for all those building and maintenance needs

Devon Home Improvements can provide you with hands on design and planning, together with a comprehensive supply of tradesmen and materials

We pride ourselves on our expertise and we believe we offer the most friendly and efficient service at very competitive rates.

- **Kitchen & bathroom design / installation**
- **Exterior & interior decoration
incl. plastering services**
- **Landscaping, patio, decking, garden walls,
garden structures**
- **P.V.C.u Facia & guttering incl. cladding**
- **Garage door installations**

Call today for your no obligation quotation

01404 823880

Or visit our website at

www.devonhi.com

Organisations in Whimble

Whimble Parish Council	
<i>Chairman:</i> Sara Randall Johnson	822524
<i>Clerk:</i> Mrs Gerri Turner, Penraddon, Hand and Pen	823385
St. Mary's Church	
<i>Contact:</i> Rev. Rob Wilkinson	822521
Devon County Councillor	
Mr. D.Button,	
East Devon Councillor	
Andrew Dinnis	850363
Whimble County Primary School	
<i>Headteacher:</i> Mrs. D. Brice	822584
<i>P.T.F.A. Chair:</i> Jenny Sanders, 1 The Croft	823015
Whimble History Society	
<i>Chairman:</i> Richard Webber	822038
<i>Secretary:</i> Roger Smith	822244
Whimble Mothers Union	
Margaret Burrough Gateshayes Farm	822257
Whimble Pre-School & Toddler Group	
<i>Chair:</i> Sally Young 11 Chard Ave	823228
<i>Playleader:</i> Jo Westney Glencroft, Church Road	822168
<i>Toddlers:</i> Helen Penney, 14 Rectory Close	822948
Vicky Clough, 15 Rectory Close	822800
Whimble Womens Institute	
Mrs. Ann Bowden, Bradcott House, The Green	823450
Whimble Over Sixties Club	
Mrs B. Iball, 11 Rectory Close	822905
Whimble Recreation Trust	
<i>Knowle Cross Sports Ground.</i> Mr P. Garraff, Luppit	891206
Whimble Village Produce Association.	
<i>Chairman:</i> Adrian Williams, 47 Slewton Cresc	822430
Whimble and Broadclyst Young Farmers' Club	
Mr. R. J. Burrough, Gateshayes Farm	822257
Whimble Football Club	
<i>Chairman:</i> Geoff Delves, 10 Elizabeth Close	823258
Whimble Tennis Club	
<i>Secretary:</i> Judith Imbo	823240
<i>Treasurer:</i> J. Hughes	822659
Whimble Cricket Club	
Mr. R.J.Smith	822244
Whimble Victory Hall Management Committee	
<i>Secretary:</i> Pam Scanlan, Albecq, The Green	822262
<i>Booking Sec:</i> Fiona Randall	822793
Whimble Post Office	
Alison and Jim Creasy	822359
Whimbletons	
Emma Palmer	823083
Neighbourhood Watch	
John Munslow, 44 Slewton Crescent	823456
St. Mary's Bellringers	
<i>Captain:</i> Liz Silk	
Whimble Scout Group	
<i>Group Scout Leader (and Marquee Booking):</i> Alex Spry	822844
Otter Rotters	
Hugh Roberts	822651
Whimble Book Group	
Katy Howard, 9 Whiteways Close	823038

The Whimpe News Team

Editor

Ed Hitchcock 823194

Production

Bob Scanlan 822262

Naome Glanville 823167

Vivienne Leonard 822415

Delivery

Ed & Nicky Hitchcock 823194

Advertising

Julie Millward 823985

Community diary

Lynda Trevena 822876

Treasurer

Miles Leonard 822415



The New Fountain Inn

Whimble, Devon.

*As recommended by CAMRA,
The Good Beer Guide, The Real Ale Guide
and the Quiet Pint Guide.*

Real Ales

Home Cooking

Lunchtime & Evening Meals 7 Days a Week

Sunday Roasts etc - Vegetarian Choices

Handmade Desserts

Children's Menu & Toddler Portions

Special Menus available for Large Parties

Lounge, Bar & Beer Garden

Join us for a Friendly Drink,

Bar Snack or an A La Carte Meal

Bookings are advisable



*A Traditional
Olde Freehouse
Village Inn
Tel - 01404 822350*