

Whimble News



The winning scarecrows by Whimble Pre-school

Oct/Nov 2010

The Thirsty Farmer



QUIZ NIGHT EVERY OTHER
SUNDAY

Starts at 8.30pm
EVERYONE WELCOME!

The Thirsty Farmer

WHIMPLE, EXETER, DEVON, EX5 2QQ

Telephone: 01404 822287

www.thirstyfarmer.co.uk

TRADITIONAL HOSPITALITY AT ITS BEST

—
Varied A La Carte Menu changed daily
alongside traditional 'Farmers Favourites'

—
Great Selection of fine Wines

—
Open all day Friday, Saturday & Sunday

—
Wine tasting evening on Tuesday 30th November.

Tickets £10 behind the bar.

Music dates

29th Oct: Magic Worms

26th Nov: Kiss This

What's On in Whimble

October

- 10th Wasters of Whimble, Victory Hall 7.30pm, Solar Panels Community meeting – details on pages 40 and 41
- 11th Victory Hall AGM 7.00pm in the Committee Room
- 15th Whimble History Society, Victory Hall, 7.30pm, (doors open at 7.00), Auction of Pledges and Promises. Details on page 50
- 16th Murder Mystery - Murder at Joe's – Victory Hall 7.30pm, details on page 49.
- 18th Pre-School AGM 7.30pm Victory Hall. Details page 27.
- 20th Village Week 2011 Meeting – Victory Hall 7.30pm Details on page 37
- 23rd Soup and Sarnie lunch, Victory Hall 12.00 noon – 1.30pm
- 31st Hospiscare Coffee Morning at the Victory Hall; 10.00am – 12.00 noon. Details on page 9.

November

- 6th Christmas Craft Fair, Victory Hall, 1.00pm - 4.00pm Details on page 19.
- 19th Whimble History Society, Victory Hall, 7.30pm, a talk by the Devon Family History Society
- 22nd Due date for acceptances to Over 65s Christmas Party; invitation on page 35
- 27th Soup and Sarnie lunch, Victory Hall 12.00 noon – 1.30pm

December

- 3rd Over 65's Christmas Party, 7.00pm for 7.30pm invitation on page 35
- 4th Orchard Harmony Christmas concert, St Mary's Church; time to be confirmed

Please use the Whimble Diary held in the Post Office for checking the availability of venues and when booking events.

If your Association has an event which you would like listed above please contact **Nicky Hitchcock** on 823194 or e-mail nickyhitch@tiscali.co.uk

PETER SALTER A.I.R.T.E.

MOBILE MOTOR ENGINEER

(Member Institute of Road Transport Engineers)

Servicing & M.O.T. Preparation

Engine Overhauls & Bodywork Welding

Cars & Commercial Vehicles

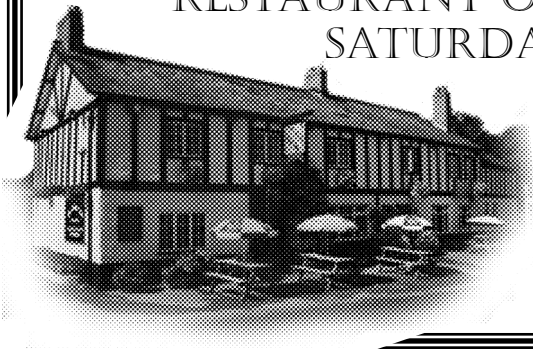
Telephone: Whimpe (01404) 823054

Talaton Inn

SUNDAY LUNCH - DAILY SPECIALS

BAR MENU AND SNACKS

RESTAURANT OPEN TUESDAYS TO
SATURDAY EVENING



**Good Ales, Good Food
Pop in and say Hello**

Tel: 822214

Ed the Ed

Gentle reader – I commend this latest edition of the Whimble News to you, crammed full of things relevant to our village that I hope you will find of interest.

We have a tribute to the late Eric Whiteway, by his nephew, Andrew Whiteway, which he delivered at Eric's funeral in St Mary's Church on 22 September. It shows a lovely contrast between the businessman and the family man, and in particular, how he mellowed in later years. He and Adrienne, his wife, were generous supporters of the History Society, and without them, there would be no Heritage Centre. The Centre will continue to remind visitors about the great days of the Whiteways cider company for years to come, and how the village has changed and developed afterwards.

We have another centre spread of photos, for you gentle reader – a selection of the magnificent scarecrows that added a lot of fun to the VPA Annual Flower and Produce Show. Neil Walker has put pen to paper and written a fine article about the competition, so thanks to him.

And that Sally Wilde, the Stage Manager of all Stage managers for the panto, has been prolific (still legal in Whimble) and produced articles on the Bad Shepherds' evening at the Cricket Club, and has forced her way into Woodhayes for a preview of all that is going on there with the updating/renovations. Well done to John and Alex (and team) for a very successful evening with the Bad Shepherds – lots of people and lots of funds going into the Cricket Club. The Woodhayes article gives a brilliant review of what Tony and Dominic have achieved over the summer – here's to their success!

Speaking of Sally Wilde, she was part of a team including Nikki Harris, Jackie Mahoney and the current Mrs Hitchcock, who abseiled down Canonteign Falls on the weekend of 25/26th September on behalf of Clic Sargent. I was there to provide support (as ever, gentle reader, I know my place) and it scared the whatever out of me, so they were all very courageous in not only abseiling from some 220 feet but down a waterfall as well. A fantastic achievement. ...well done.

And whilst we are on the topic of success – what a lovely feeling to tell you about all these great things that have been achieved! – the Bra babes (the current Mrs H and Viv Leonard) were out striding the streets of Bristol in the Bristol Half Marathon in early September, when they did it as walkers rather than runners. They came in with a blistering time of 3 hours 1 minute 43 for distance of 13.1 miles which is very good. But NOT good enough for the Bra Babes...and so, gentle reader, we are going back next year to get under 3 hours!

Other nuggets in this edition include meetings for WOW and the topic of solar panels, and planning for next year's Village Week. Please support these.

Thanks for our donations left at the PO, and wearing my Whimbletons hat, thanks to the generous Thirsty Farmer quiz teams who contributed some £60 to our funds.

THE NEXT NEWS WILL BE THE CHRISTMAS EDITION, SO IF YOU HAVE ANYTHING TO SUBMIT FOR THIS FESTIVE EDITION, WE NEED YOUR ARTICLES BY MONDAY 15th NOVEMBER. AS USUAL, TO SANTA JIM AND HIS LITTLE ELF-LIKE HELPER, ALISON, OR VIA EMAIL TO YOUNG BOB SCANLAN ON bobsanlan@eclipse.co.uk

And thanks to our valiant band of deliverers who are even now, putting on their snowshoes to make sure the Whimble News gets out to you.

ED H

EXETER CARAVAN CENTRE

For Sale - pre-owned caravans
and caravans sold on owners behalf.
Caravans also bought and sold.

01404 822116

or

07985 179399

London Road, Whimble



SLACK-MA GIRDLE

for
Ceilidhs, parties, weddings.

Christmas sing-a-longs.

The local band

for all occasions



Tel 823083

Not as interesting as Granny's!

CAPITAL & CITY TAXIS

01392 433 433

**FOR ALL YOUR
AIRPORTS,
SEAPORTS & EXETER
STATIONS**



Whimble Post Office News

Good news for customers who bank with the Halifax, you can now deposit cash and cheques with the Post Office, as well as withdrawing cash with card and pin number. You will need to have a paying in slip and envelope, both can be obtained direct from the Halifax. We will give you details if you need it.

The Post Office have released new gift cards , just in time for Christmas. There are a few different designs available, suitable for all occasions, and these can be purchased in denominations from £10 - £200. The best thing about them is that they can be used in several different shops, including Argos, B&Q, Boots, Comet, Smiths, Mothercare and many more.

Barbara Bolt, the artist who paints the lovely watercolours of Whimble, is producing a snowy painting of The Square, just in time for Christmas. It will make a welcome addition to the range and will make ideal personal Christmas cards.

More and more Post Offices are now becoming dependent on the retail side of their businesses to support the stagnant Post Office salary, and that has certainly been the situation for us. We are very grateful to all our customers who purchase cards, newspapers and other shop items from the retail side of the business. Each and every purchase is much appreciated.

Thank you for supporting the Scouts by buying the books that we have outside, we are pleased to say that a fantastic £500 has been collected in donations since starting it in February. It is so popular that we will continue to sell books through the winter – but in a somewhat reduced capacity as the weather is more likely to be inclement .

Our grateful thanks for your support

Jim and Alison Creasy

Whimble Post Office Tel 822359

St Mary's Church Monthly Programme of Services

1st Sunday - 8am Holy Communion (BCP);
11.00am Morning Worship;

2nd Sunday - 11am Holy Communion;

3rd Sunday - 8am Holy Communion (BCP);
11am Celebration Service;

4th Sunday - 11am Morning Worship;

5th Sunday - 10.30am Churches4All joint service (various locations)

A tribute to Eric Whiteway

by Andrew Whiteway

Although Eric was the cousin of my late father Richard Whiteway, we always knew him as Uncle Eric: Many would have known him as Mr. Eric.

He was an extremely imposing figure in our lives as we grew up, first here in Whimple and later close to Eric's house in Exeter. We would see him when we visited the cyder factory, clipboard in hand, having earnest technical discussions about lorries or cider fermentation while my father was busy with export sales, or equally likely the team selection for the Whimple and Whiteways cricket club.

We would make regular visits to the house in Pennsylvania Road, Exeter that he built there soon after the Second World War. It seemed remarkably modern to us compared to Woodhayes, it even had central heating and a fitted kitchen! Without doubt the highlight of any visit would be when Eric would take us out to the forecourt and demonstrate his prowess as a water diviner, using a couple of coat hangers to locate the stream under his driveway: you can imagine how impressed we all were by this magical trick!

The way in which he planned entertainment for us showed that beneath a slightly forbidding exterior, Eric was capable of being very thoughtful and kind, and of course these qualities made him an excellent choice as Godfather to my brother Peter and myself.

Another annual highlight for us as children was the summer visit to Bude in Cornwall. Eric, Adrienne, my parents and other hardy grown-ups would change into their swimming costumes regardless of the weather, pick up their wooden surfboards and march purposefully off to the beach, while the younger generation would look on with incredulity at their foolhardiness, but feeling slightly guilty at the same time.

When we had all left home and were living in London, Eric and Adrienne would make regular visits to London, often on veteran car related business, and would without fail invite us to dinner at somewhere extremely nice, The Savoy, The Mayfair Hotel, even the Ritz on one occasion. Eric's air of authority ensured that we always received excellent service, and his generosity on these occasions was fantastic. I am sure you will all agree that this air of authority could be quite terrifying at times, and made one feel that you could not possibly let him down.

No doubt this contributed greatly to his success in the Royal Artillery in the Second World War, his time as a director and latterly as chairman of Whiteways, and of course his dedication to the city of Exeter as a Conservative councillor for 18 years and as president of Exeter Conservative Association.

In recent times he was a generous benefactor to the very fine Heritage Centre here in Whimple, and I know that he was absolutely delighted with its success as an additional focal point for the life of the village.

Another very valuable role he performed over the years was as family historian, and one of my most valued possessions is a family tree, written out by Eric, that goes into incredible details over several generations.

As we all know, Eric could be a man of few words, and one sometimes had to put in a lot of work to get the conversation going. I once nervously mentioned that I was about to go on a trip to Australia and New Zealand, hoping this would be of interest to him. He dealt with the subject in a very Eric like way. "Business or pleasure" he asked, - "Business", "Buying or selling" - "Buying" I replied, "Hmmm" Eric said, and that was the end of that topic! But that was just his way, and we all grew to rather admire his slight eccentricities.

After the death of his beloved wife Adrienne four years ago he was naturally devastated, particularly in view of his own failing health, and we all wondered whether he would be able to cope. But after a period he rallied, and despite continuing health problems, he mellowed noticeably, and in the last two years of his life he was extraordinarily content and happy with his lot. His 90th birthday party was a very special occasion, when, despite being confined to bed he was dressed very smartly in a suit and his old regimental tie and made a very dignified speech thanking all those who attended.

I think it is fair to say that Eric Victor Morgan Whiteway was from a generation that doesn't really exist anymore, more's the pity, but his full and varied contribution to the life of this part of Devon will be remembered for a long time to come.

Andrew Whiteway



As has become the custom at this time of year, there is to be a Coffee Morning in support of Hospiscare. It will be held in:

**the Victory Hall on
Saturday 31st October
from 10.00am until 12noon**

There will be the usual stalls - cakes, gifts, books etc. and a raffle. There will also be a full selection of Hospiscare Christmas cards. We are so grateful for your support in the past and hope we can look forward to another successful morning.

Rosemarie Burrows

WHIMPLE

The Perfect Village

“A great community, good amenities and excellent accessibility”



We have a constant stream of enquiries for property of all types in and around Whimple.

ASK FOR A FREE VALUATION

01404 814306

www.redfernsproperty.co.uk

Tim Wright



THE JACK IN THE GREEN INN



Exceptional Value...

Both restaurant and pub, the Jack oozes honesty, panache and that rare four letter word - CARE. Expect good local brews on tap, an extremely warm welcome and some seriously impressive desserts.

New for 2010 is a fantastic bar menu and a stylish courtyard for al fresco dining. There's also live Friday night jazz (every second Friday of the month) beginning in May. Always exceptional value for money.

Telephone: 01404 822240. www.jackinthegreen.uk.com
Rockbeare, Near Exeter, Devon EX5 2EE.



From My Window In The Square

Edith Marie-Louise Grout

I know a garden where the sun is like gold
And the cherry blossoms burst like snow
And down underneath is the loveliest nook
Where the four leaf clover grow

One leaf is for hope and one leaf is for faith
And one is for love, you know
And God put another one for luck
If you search you will find where they grow

But you must have hope and you must have faith
You must love and be strong – and so
If you work you will find the place
Where the four leaf clover grow

Hundreds of years ago the greatest English poet of all times, William Shakespeare, wrote those immortal words in his comedy "As You Like It". "The world is like a stage with its entrances and exits" and for me that is exactly what our very beautiful Whimple Square represents. They say that home is where the heart is, this is the heart of our village and it is my home and I love it with all my heart. They also say that life is not a bed of roses, but your beloved family and friends make it a beautiful garden where you find happiness and a great contentment. Years and years ago, when I successfully finished at the agricultural college, I decided to continue in horticulture and was apprenticed for four years to the most extraordinary master. When I reached my final state exams, Jean de Ribeaupierre gave me the most precious present – an antique Roman bronze oil lamp saying "may the light of great antiquity be your guide in your future life and make you enhance your great sense of discovery and marvel". That Roman oil lamp has travelled with me wherever I went and is now displayed proudly on my mantelpiece. Talking of that lovely poem, I remember so well going for long walks with my lovely Airedale dog Mister Blaze, also well known by the village children as 'the teddy bear dog'. Wherever we stopped on a grass verge along the leafy lanes, I picked a great number of four leaf clovers which are still in many of my books. That Mister Blaze seemed to have a sense of always stopping to sniff at the right place. I also found wild orchids, and all sorts of treasures and I also met lots of friends who made my walks so very special. I always came home enriched and relaxed.


When we moved to The Square with Jack about thirty years ago we were made so welcome. The first visitor as it was the norm in those days was the Rector, the well loved Reverend Harold Tucker, a real country parson who understood the ways of the village and country people. I had met him previously when I was a delegate to the great Aylesbeare Deanery where I made many friends.

Another first and welcome visit was from Tom and Barbara Lambert and I always treasured the memory of the warmth and kindness of those two special visits. What a great number of charming people we met, Betty Williams was the postmistress, Alan and Betty Scanes-Johnson always ready to serve and help us at the Whimble Stores and of course the Webber family at the butchers, Eric at Henry Lewis the coal and building merchants. I remember the coal lorries delivering weekly – it was not easy for them to negotiate the corner. Also the cattle lorries going to the abattoir. Vic the shepherd with his sheepdog Bluey and Michael Dart from the coal yard always walking through The Square whistling. We knew there was something wrong in the world if he didn't. Many of those friends we made then are still friends and I thank especially dear Richard who knowing my sight was bad sent me the wonderful clover poem in large print. Thank you with all my heart.

Although life in The Square has changed, it has still remained very much a stage with its entries and exits. Whenever I venture out I always meet someone smiling at me. Mothers and fathers with prams and children, just so many charming everyday people going about their daily routine, dog walkers, riders and horses, joggers, children on scooters, youngsters on bikes. It seems to me that everyone I meet is friendly and pleased to see me. What a lovely feeling.

Our wonderful Flower Show this year was the best ever. We have such a dedicated and inventive team. Everything ran smoothly and we had far more entries than ever, especially in the children's section which augurs well for the future. The judges were so well looked after and had capable stewards to help them. My heartfelt congratulations to all those who worked so hard to make it such a success. I love the months of October and November, when all the crops are gathered in and our harvest festivals are celebrated to thank God for all his bounties.

When we first came here I used to do a bit of baby sitting and I remember meeting a charming family in The Square with whom I became friendly. Although they have moved to Wales we are still in touch constantly and not so long ago I had a visit from the tribe. Sarah, the youngest, is a budding poet and she composed this lovely poem for me and the magazine.

Edith's Poem 
~~In my garden / from my windowsill.~~
~~Always with the flowers~~
A flower blooms and grew in
the dark,
I found it once and it
lightened my heart.
As it radiated its light,
it attracted and welcomed
visitors day and night.
Love from,
(By) Sarah Wright.
31st July 2020.

There are no strangers in the world, only friends you have not met



Longfield Cattery

heated single and double chalets
personal care and attention



(now also looking after small animals)

01404 822275

Longfield ~ Church Road ~ Whimble ~ Exeter ~ EX5 2TF

THE PENSION DRAWDOWN COMPANY

INDEPENDENT FINANCIAL ADVISERS

FOR UNBIASED, QUALITY FINANCIAL ADVICE BASED ON YOUR
CIRCUMSTANCES PROVIDING SOLUTIONS TO YOUR NEEDS
INCLUDING

SAVINGS INVESTMENTS PENSION PROVISION
RETIREMENT OPTIONS *inc* ANNUITIES
LIFE AND CRITICAL ILLNESS COVER INCOME PROTECTION

**Contact: Bob Diamond at 6 The Withey, Whimble,
on 01404 822865 or Email r.diamond1@ntlworld.com
For a free initial consultation**

Appointed Representative of The Burns-Anderson Independent Network PLC,
which is authorised and regulated by the Financial Services Authority

Whimble News on the web

Lost your recent copy of Whimble News?
or want a far away friend to see a particular article?

Well, Whimble News is now available on the Web

Go to www.yudu.com
and search for 'Whimble'



You will find the last six editions of the News
in a 'page-turning' format
with some of it in glorious colour!

In due course we hope to also have an archive going back
for over eight years - that is around 50 issues.

Watch this space

BAD SHEPHERDS WERE GREAT IN WHIMPLE!



On Saturday 11th September, a gloriously dry and warm Saturday evening, the Bad Shepherds came to Whimple.....and what a fantastic evening it was!

As a result of a joint effort between Handsome Dicks Records, Whimple Cricket Club and so many helpers it's impossible to list them all. The village enjoyed an almost 'mini Glastonbury' experience, combining great music from Ade Edmondson's band (he of The Young Ones/Bottom fame), real ale, take away food and even 'festival toilets'!

Everything went so smoothly that it was impossible to imagine the work and stress the organisers had put into it – we are so lucky to have them in the village.

The evening started with singer/songwriter Richard James, who provided a mellow sound while we all settled in. Lots of folk bought chairs and blankets along and enjoyed the local O' Hanlon's beer while they listened to Richard and soaked up the last rays of sunshine.

After Richard, Ella Edmondson (Ade and Jennifer Saunders' daughter) performed a great set with her joint song writing partner and livened things up a little more, in readiness for the main event. Ella certainly has her mothers' good looks and her fathers' musical talent – she was also brilliant at bantering with the audience and her songs were lively and fresh.

John Griffiths of Handsome Dicks then took to the stage to announce the Bad Shepherds.

When John and the team booked them, it was relatively unknown that Ade had formed a band and was touring with them but, since then, they have become well established as a great live act and have been playing at many of the major summer festivals. John certainly did Whimple proud by booking them so far in advance.

The band was a four-piece with Ade on lead vocals and , as he puts it, ‘thrash mandolin’, backed by a mesmerising fiddle player, Andy Dinan, plus percussion back up from Troy Donockley on Uilleann pipes, cittern, whistles and vocals.

I, personally, was determined not to check them out on You Tube or anything beforehand, so as to have no preconceived expectations, and I’m glad I didn’t – it was not at all what I had anticipated.

I suppose the only way to begin to describe it is ‘take any 70’s or 80’s groundbreaking rock/punk anthem and turn it into Folk Metal!’

We all recognised the originals: ‘Model’ by Kraftwerk, ‘Ace of Spades’ by Motorhead, ‘Down at the Tube Station’ by The Jam and even the The Smiths ‘Hang The DJ’, but played on a fiddle and mandolin? Somehow, though, it was amazing!

Everyone danced and sang along, formed giant congas , did a bit of dosey doe-ing and generally had a really good time.

It was a good, long set and the weather stayed fine. What more could we ask for? Well done to everyone who worked so hard on the organisation, which also raised money for the Cricket Club. The only downside for me is missing out on the prize for a meal in the Jack In The Green by four programme numbers – my fault for chatting to Big Bob on car park duty!

How are you guys going to beat it next year???

Sally Wilde



MP Property Maintenance

Roofing, Guttering, Drainwork,
Painting and Decorating Plumbing,
Gardening
General Repairs and Maintenance

No Call out charge
Free Estimates
24hr callout service



Tel: 01404 813253
07891 124025



EX5 Dog Days

The dog minding
service for
caring owners

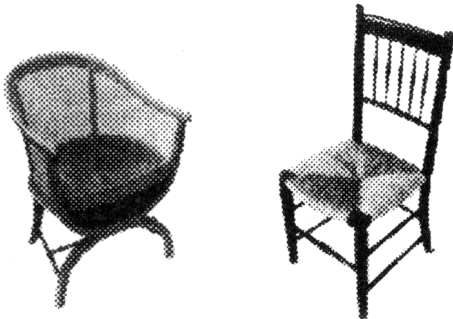
www.ex5dogdays.com

07768 176 623
01404 822 744

Providing knowledgeable,
professional day or stay
care in a home environment

Half days - Whole days - Holidays

CHAIR CANING
RUSH SEATING
SKEINED WILLOW



Tel: 01404 822422

Higher
Sleuton
Whimple

Rosemarie Burrows

Mona Diaz Ramsay

Curtains, Blinds and Soft Furnishings
ACGI Qualified

Branscombes
Aller Grove
Whimple

01404 822433

-Bespoke Service-
Consultations, Fabric Advice,
Accessories and Alterations

**Christmas Craft
Fair
Whimble Victory
Hall
Saturday 6th November
2010
1pm-4pm**

Please join us for a fun afternoon browsing the craft stalls at this years craft fair. All proceeds going to Whimble Primary School.

Relax with a cup of tea and piece of home made cake.

There will be lots of great Christmas present ideas and a raffle with lovely prizes.

Entry is Free.



WOODHAYES COUNTRY HOUSE HOTEL OPEN FOR BUSINESS!



I'm sure all of us driving through the village and passing Woodhayes these last few months have seen the signs saying 'renovation in progress' and have been really curious to know how the changes would look and what the new owners are like!

Well, I've been lucky enough to have a sneak preview and I can truly say that Tony Wiltshire and Dominic Morgan will be perfect hosts and they have given the building a complete overhaul, with loving attention to detail and touches of luxury, whilst keeping the original features that make Woodhayes such a charming house.

As I drove up, the gardens looked stunning and the fresh paintwork on all the outside (doing those windows must have been a labour of love!) gleamed.

Tony welcomed me into a spacious hallway and the first thing that struck me was that they had kept all the original doors. These look as if they could be in a church, with archways and carvings, and are huge! It would be hard to imagine how modern doors could possibly look right in this house and Tony was really pleased that the fire regulations allowed for them to stay.

Each room in the hotel has been renovated to the highest standard and the original windows provide a light and spacious feel throughout.

There are six rooms in total, all named for their favourite artists and decorated with their work. The two Deluxe rooms are Dali and Vettriano. These are really big rooms, with equally fabulously large bathrooms.

The next two Tony showed me were the Superior Van Gogh and Kavinsky rooms, which still looked huge to me (I stay in London hotels for work often, which are often shoe box sized, despite the price), with equally matching large bathrooms.

Finally, the two Standards, Macke and Picasso, which were just as luxuriously finished and, again, pretty spacious in my eyes.

Each room had flat screen TVs and many had the original built-in (Victorian?) wardrobes.

Tony pointed out that he had even installed a mini-fridge in each room, which I immediately thought could chill a nice bottle of wine for the evening, but it turns out to be so that guests can have fresh milk in their tea as he, personally, dislikes the UHT kind often supplied – more attention to detail there.

Downstairs, a comfy guest lounge is provided, along with an airy and modern dining room.

All the decor throughout has been carefully thought through, featuring warm 'linen' tones, under floor heating, beautiful bedding, elegant furniture and Italian-style bathrooms, with very modern fittings.

Tony explained that they are aiming to market the hotel for 'city escape' breaks to the beautiful and peaceful environment of Whimble. (They had better warn them about Wassailing, then!)

They are expecting mainly couples and groups of friends who are looking for a bit of luxury in their bed and breakfast accommodation, although Tony has already had quite a few requests for functions and weddings, which would fill all the rooms.

Amazingly, neither Tony or Dominic have backgrounds in the service industry, with Dominic being a chartered surveyor and Tony an accountant, but they always enjoyed throwing big parties and entertaining when they lived in London and Hampshire. Then, one day, a friend remarked that staying with them was "like being at a luxury hotel, for free".

Tony said that was a '*ping*' moment for them and they started seriously looking for the right premises.

Dominic's family had spent well over 30 years holidaying in Sidmouth, so he knew this area well already, but they could not find the right place here at first.

However, happily for us, a couple of places in the Cotswolds fell through, then Woodhayes came up and won them over!

Initially, they will run the premises with just the six rooms, but they have room to expand into the cottage as well.

They will offer bed and breakfast only, which will bring welcome extra evening business to the pubs and restaurants in the area, and hope to provide the use of the paddock for some village events.

Tony wanted to stress how helpful the previous owners have been and how very welcoming Whimble is, and they are keen to find a way of offering more to the village as time goes by. (This sounded especially exciting when Tony mentioned that Dominic is completely swept away by the 'Baking' bug!)

Initially, though, they have to concentrate on establishing the business and learning the hotel trade as they go along!

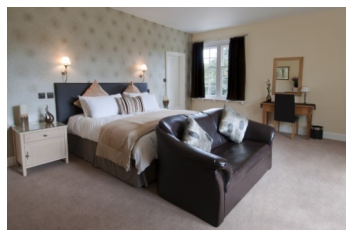
I wish them the very best of luck, but suspect they don't really need it! Woodhayes is just perfect.

Opening date 1st October. The website is under construction, but will be:

www.woodhayescountryhouse.co.uk

and the telephone number is 01404 823120.

Sally Wilde





TAYLOR MADE DRIVING

Beginners

Pass plus

Pre 17 lessons

Refresher lessons

Diamond advanced driving

Motorway driving

Theory & Hazard Perception Tuition

Male & Female instructors

High 1st time pass rate

Patient, Friendly & Fun Tuition

A local independent driving school
teaching local people to

“DRIVE FOR LIFE”

CALL FREE 0800 652 66 69

Andrew & Jill Taylor

THE *SIDEKICK* BUDDYING PROJECT

Volunteering is a great way to learn new skills, meet new people and contribute to the local community. However, some people lack the confidence to volunteer, perhaps because they are vulnerable, isolated or have specific needs. *Sidekick Buddies* provide support across East Devon to such volunteers by accompanying them to their volunteering placement (e.g. a charity shop, a community café, a conservation project), and assisting them in the tasks they are undertaking. The aim is for the Buddy to assist the Supported Volunteer to build up their confidence and skills to the point that the services of the Buddy are no longer needed – i.e. the Volunteer is able to undertake their placement independently.

WHO CAN BE A VOLUNTEER BUDDY?

A Volunteer Buddy needs to be supportive, non-judgemental, patient, understanding, friendly, sociable and reliable with a great sense of humour.

They will be open to learning new skills and prepared to undergo training.

A Buddy will be able to offer a regular time commitment (a few hours, once a week).

They will agree to undergo a CRB (Criminal Records Bureau) check and be willing to adhere to EDVSA policies and the *Sidekick* code of practice.

WHO CAN BE A SUPPORTED VOLUNTEER?

Sidekick is happy to talk to anyone who thinks that they would like to get involved in volunteering, but would like some support to do so. You should be well enough to take part in a volunteering placement once a week and be willing to learn new skills with a view to volunteering independently.

FOR MORE INFORMATION

To find out more about Sidekick please contact:

Jacky Cox, Sidekick Project Coordinator

East Devon Volunteer Support Agency

Ridgeway, Ottery St Mary EX11 1DT

Tel: 01404 549045; 07729194927

Email: jacky.cox@edvsa.org.uk



WHIMPLE AND DISTRICT VILLAGE PRODUCE ASSOCIATION

Every year we wonder just how we are going to match the standards set by the previous year's show, and this year was no exception. However, we were simply amazed at the response to our Village Scarecrow Challenge, it certainly generated a very good atmosphere outside the Victory Hall while all the exhibits were being set up. The overall effect was quite a show stopper with an amazing array of enterprise and imagination – especially the Invisible Man. So many hours of preparation must have gone into that exhibit that the team must have been truly exhausted by the time it was put out on display! We were told that just about every passing car had to stop just to check they weren't imagining things. It was good to see the exhibits moving around the village after the show as well.

As to the show itself, it was another good year for exhibitors and exhibits. This year we had 93 exhibitors who produced 582 exhibits in the adult classes and an amazing 142 exhibits from the children in their classes, a magnificent effort from them. So thanks to all of you who entered this year, especially to all the trophy winners, and hopefully next year it will be the turn for some of you who didn't!

It was good to see all the Children's Classes were up to their usual high standards, with an amazing number of entries, particularly in the sewing and handwriting classes, it certainly gave the judges a hard task to determine the winners in those classes. The trophy winners in these classes were Livvy Carter who won the newly presented Owen Cup; Annabel Courtney who won the Basildon Award; Alfie Howard who won The Fletcher Cup and Samantha Mahoney who won The Children's Challenge Cup. The photography section was again keenly contested with some outstanding pictures. It was a challenging task for the judges. For the second year running Alan Smith was the winner of the Paul Henry G.C. Memorial Cup. There was one exhibit which the judges considered to be worthy of a Certificate of Merit and that was awarded to Gilly Curtis.

In the Arts and Crafts Classes there was another wonderful display of skills. The winner in this section of the Len Rose Memorial Cup and the Whimple Craft Cup was Shirley Williams. There was another outstanding exhibit in this Section and I think everyone marvelled at the talent of Lewis Greenslade Trump with his profile of John Lennon. He was quite rightly awarded a Certificate of Merit for this.

It was good to see an increase in the number of entries in the flower arranging with another display of floral artistry. In this section the Frances Pratt Cup was awarded to Rosemary Davies and the Marie Louise Grout Cup for the best exhibit in the Show, which was voted for by everyone who came along to see the show, was awarded to Nancy Giles. The Roy Horsburgh Trophy was won by Doreen Staddon. The Sandfords Cup, which this year was for the combined Men Only Classes of a floral arrangement and a carrot cake, was won by Adrian Williams in what can only be described as a very keenly fought contest!

As usual the Homecraft section was full of excellent mouth watering exhibits and the snooker table was positively overloaded with tasty exhibits. Congratulations to Vicky Clough who took the honours in this section winning the Sir Henry Imbert-Terry Cup.

The Pot Plant Section had an excellent number of exhibits with all the classes well supported. The winner this year was a repeat performance of last year with Sue Parkinson winning the Briar Trophy again. And, last but by no means least, there was an exceptionally good standard of entry in the flower and vegetable classes. The hot dry weather in the preceding months meant lots of watering for the exhibitors and the exhibits proved that all that effort very worthwhile with another excellent display with quality exhibits in all the classes. In the Vegetable Classes, The Slewton Cup was won for the second year running by Sue Parkinson and the runner up in this section winning the Cranny Brook Cup was Paul Wilson. In the Flower Classes, the winner of the Win and Bob Shepherd Cup was Colin Northcott and the runner up winning the President's Cup was Michael Mallet. However, when all the classes were combined, the overall winner of this section, winning the Whimple Folk Cup, was Colin Northcott.

And then there was the Whimple Challenge Cup which was for the Scarecrow Competition. So intense was this class that we will not reveal the name of the judge! Needless to say it was an immense task to determine which of the fifteen imaginative exhibits would get the magnificent trophy that was to be awarded. After much deliberation and checking of the scores, the first winners of this wonderful trophy were the Whimple Pre-School – so many congratulations to them.

We were very pleased to invite Pauline Rogers to present the trophies and, on behalf of the Show Committee, Grace Tierney presented a bouquet to her and she was also presented with a posy.

All the judges remarked on the high quality of the exhibits in all the classes and they asked that these comments were passed on to all the exhibitors. In fact one exhibit was so good the judge even asked for a magnifying glass to inspect it! So well done to all of you who entered and give yourselves a big pat on the back for your efforts!!! In turn, we are extremely grateful to all our judges who give up their time to do this difficult task with such quality exhibits.

The Committee would like to express their thanks to everyone who helped us set up the Hall for the Show and clear up afterwards, it is very much appreciated. It is quite amazing that at 5.30 we were still in the throes of prize giving but by 6.30 the hall had been completely cleared, and you would not have known the Show had taken place! For those of you who were entering for the first time we hope you enjoyed the experience and we look forward to seeing you at next year's show. And talking of next year, the Flower Show will be on Saturday 13th August 2011, so start your planning now!!

Paul Wilson

Hon Secretary

WHIMPLE FLOWER AND CRAFT SHOW 2010

TROPHY WINNERS

SECTION 1 – Vegetables and Flowers

The Whimble Folk Cup	Colin Northcott
The Slewton Cup	Sue Parkinson
The Cranny Cup	Paul Wilson
The Win & Bob Shepherd Cup	Colin Northcott
The President's Cup	Michael Mallet

SECTION 2 – Pot Plants

The Briar Shield	Sue Parkinson
------------------	---------------

SECTION 3 - Homecraft

The Sir Henry Imbert-Tery Cup	Vicky Clough
-------------------------------	--------------

SECTION 4 – Beer, Wine and Spirits

No Classes

SECTION 5 – Floral Arrangement

The Frances Pratt Memorial Cup	Rosemary Davis
The Roy Horsburgh Trophy	Doreen Staddon
The Marie Louise Grout Cup	Nancy Giles

SECTION 6 – Arts and Crafts

The Len Rose Memorial Cup	Shirley Williams
The Whimble Craft Cup	Shirley Williams

SECTION 7 - Photography

The Paul Henry GC Memorial Cup	Alan Smith
--------------------------------	------------

SECTION 8 – Children under 5

The Owen Cup	Livvy Carter
--------------	--------------

SECTION 9 – Children aged 5 to 7

The Basildon Award	Annabel Courtney
--------------------	------------------

SECTION 10 – Children aged 8 to 11

The Fletcher Cup	Alfie Howard
------------------	--------------

SECTION 11 – Children aged 12 to 15

The Children's Challenge Cup	Samantha Mahoney
------------------------------	------------------

FLOWER ARRANGING & CAKE (for men only)

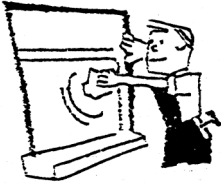
The Sandfords Cup	Adrian Williams
-------------------	-----------------

WHIMPLE VILLAGE CHALLENGE CUP

Whimble Pre-School Playgroup



**Whimble Pre-school
Annual General Meeting
will be held on
Monday 18th October 7.30pm
In the Committee Room
of the Victory Hall
All are welcome**



WINDOW

CLEANER

**PAINTING & DECORATING
TILER**

PATIO PRESSURE CLEANING

SHED ROOFS - RE-FELTED

GENERAL HANDYMAN

(Excellent references if required)

For that personal service

Phone Mr Evans on 01404 822120

Tree & Hedge Planting & Aftercare ●
Contract Work ●
Garden Maintenance ●
Herbicide Application ●
Chainsaw Crosscutting ●
Strimming ●
Brushcutting ●

Call Daniel On:
07974 385834

DRM
WILLIAMS
TREES & GARDENS

WORKING WITH
PERRIE HALE
FOREST
NURSERY

It was good to be back !

A big **THANK YOU** to everyone who made me so welcome during my recent stay, house and dog sitting for Ann and Peter Bowden.

I was included from day one, even if it was to stuff the Village Hall Scarecrow's legs! The WI Craft group included me too and I had trips out to Exeter and the cream tea at Clyst Hydon.

I was even allowed to don a pinny for the Soup 'n Sarnie and was most impressed with the high standard of those delicious homemade soups.

Special thanks to Pauline who 'dog walked' with me most days, even on the rainy ones and who gave me meals whenever I wanted them.

Grateful thanks to Bob and Pam Scanlan who bravely decided to let me resurrect my rusty culinary skills making some meals for them.

Whimble is still a super Village and I miss all my friends but it was so good to catch up with you all. Thank you.

Antoinette Welch

LANGMEAD MEMORIALS Ltd



**LOCAL FAMILY FIRM FOR
OVER 100 YEARS**

**MEMORIALS IN GRANITE
AND LOCAL STONE**

**SHOWROOMS AND WORKSHOPS
AT WHIMBLE, DEVON**

Tel: 01404 823555
www.langmead-memorials.com

No job too big or too small



Goodlife GARDENERS

Grass cutting, hedge trimming, tree surgery and planting. Garden waste removal service. Regular gardening throughout the seasons undertaken.

WE OFFER A FRIENDLY AND
RELIABLE SERVICE

Phone Rob or Shelley on
01404 850129 or
mobile 07866 672150

ARK POTTERY

STUDIO, SHOP & GALLERY

Wide choice of affordable pottery direct from the potters, all designed and made on site. Also sculptures, pictures and cards.

ENTRANCE & PARKING FREE

- **Have a go on the wheel!**
- **Pottery Parties**
- **Commissions**
- **Baby Foot Impressions**

Find us just off the Ottery/Sidmouth Road at Wiggaton (Follow the brown tourist signs from Ottery.)

OPEN DAILY 10 am- 5 pm
Tel. 01404 812628

email:ark.pottery@mypostoffice.co.uk



Seton Tree Care *Arboricultural Services*

Felling & Dismantling • Reductions & Shaping
Hedge Cutting • Garden Clearance • Planting
Emergency Service • Log Supplies

For a free quote and advice:

Tel:

01404 841314

Mobile

07957 658202

www.setontreecare.com

- *NPTC Qualified staff.*
- *Full Public & Employers Insurance.*

S. CARUTH N.C.H. Arb



Goods from the Woods

Bespoke Timber Buildings
&
Timber Products

Traditionally made timber frame buildings-garden rooms-summerhouses-garages-greenhouses-conservatories. Made to order internal/external doors, gates, seating and more..

*Built to last,
quality timber products tailored to meet your requirements.*

for more info visit

www.goodsfromthewoods.co.uk

Whimpe, Devon — tel. 07811 670 967

BARRY SEAFORTH DECORATING SERVICES

Est 1979



PAINTING WALLPAPERING
SPECIALIST FINISHES MURALS TILING
COVING CARPENTRY ALTERATIONS
REFERENCES AVAILABLE

Call Barry 01297 552981
Free Estimates

PERKINS

Pet & Country Store

**Competitive prices on
major brands of pet
food & supplies.**

but REMEMBER
We're not just a pet store —
we sell clothing and footwear
for every season !

17 Finnimore Trading Estate
Ottery St Mary
EX11 1NR
Tel : 01404 812605
Email :
fwperkins@eclipse.co.uk



Sarah Evans MFHT



Treatment Room

Offers a full range of beauty
treatments & skincare advice

Stockist of dermalogica
products

Tel 01404 822664

The VPA show with added scarecrow appeal

When I tell people who are not from Whimple that it is the village Flower and Produce Show and I am going to enter a couple of categories they look at me strangely. They then shy away and mumble something about the Vicar of Dibley. I know why they do this, I do not have green fingers (although I do have some cheap jewellery that does make my skin turn green) and entering a Produce Show is not something you would expect me to do.

This is why the Flower and Produce Show is such a highlight of the Whimple calendar, there are categories for everyone, with the young and not so young getting involved and entering.

This year was no exception and the good folk of Whimple were happy to show off their prize assets in abundance. The Victory Hall was filled with fabulous flowers, voracious vegetables, perfect photographs, exceptional eggs, cracking cakes and a host of other entries in the varied categories, including a couple of very odd shaped vegetables.

When the doors opened people flooded in to see not only what was on show, but also to see if they had actually won a 'big money' prize. (Go on admit it we all did it, and I am still disappointed that my carrot cake didn't win first prize)

A new addition to the VPA show this year was the scarecrow competition, in which various village organisations spent weeks (or maybe hours/minutes) planning and creating the scarecrows and then displaying them outside the Victory Hall. From a belly dancer to Elvis to Andy Murray and the Invisible Man - the talents of Whimple were on show again.

The scarecrow competition was a great success and all the scarecrows were fantastic, and everybody who entered should be considered a winner. As you can tell from this last statement the scarecrow I was involved in did not win, the winning scarecrow being made by the children of the pre-school. Maybe actors are correct, 'never work (or enter scarecrow competitions) with children or animals'.

Did you know that there was a case recently when 7ft tall scarecrow policeman (complete with fake speed gun) standing by a road in a Norfolk village to promote the village scarecrow festival, was arrested. With the police saying that it promoted a bad image of policing.

Thankfully none of our scarecrows were arrested, although it is a good job that the Wine Club scarecrow was not breathalysed as he would surely have been over the limit. Similarly, the VPA's own scarecrow was almost guilty of lewd behaviour with the amount of cheek he was showing!

Finally a big thank you to the members of the VPA who obviously work very hard to bring this all together.

Roll on next yearnow where did I put Delia's 'Big Book of Cake Recipes Which Guarantee First Prize in Village Baking Competitions'?

Neil Walker



Scarecrows 2010





★ DRAIN-WIZARD

Pitch Fibre Specialists
 Drainage & Light Plumbing Services

24 Hour Emergency Service

Blockages, Jetting, CCTV, Repairs, Lining,
 Renewals, Septic Tank & Soakaway
 Problems, Toilets, Ball Valve & Leaks

Tel: 0800 1076063

Mobile: 07815 064669

Grandisson

FIRES, FIREPLACES,



STOVES



& DECORATIVE PLASTER

FREE ADVICE AND SURVEYS
 EXPERT AND QUALIFIED FITTING BY OUR OWN FULLY SKILLED TRADESMEN
 VISIT OUR LARGE SHOWROOMS

GRANDISSON, 26-28 FINNIMORE IND. EST, OTTERY ST MARY, EX11 1NR
 TEL: 01404 812876

OVER 65's PARTY

3rd December 2010

This is the 17th year that the Ladies of the Village are arranging a Christmas party for the over 65's of the village.

If you would like to help with the party, either on the day or by cooking beforehand, please contact Ann Bowden on 823450

THIS IS YOUR INVITATION

The Ladies of Whimble Village invite the Villagers of Whimble who are over 65 years of age (before Tuesday 30th November 2010) to a Christmas Party at the Victory Hall, Whimble on Friday 3rd December 2010 at 7.00pm for 7.30pm.

Please complete the slip below, cut it out and return it to Ann Bowden by Monday 22nd November.



To: Mrs Ann Bowden
Bradcott House
The Green
Whimble

I/We will be attending the Over 65's Christmas Party on Friday 3rd December

Name(s) _____

Address _____

Do you require transport ? : _____



JOIN US AT

ANDY'S RESTAURANT

PART OF THE INTERNATIONAL SWIMMING SCHOOL, STRAIGHTWAY HEAD, WHIMPLE
A LA CARTE MENU

BAR SNACKS

PARTIES CATERED FOR (UP TO 30 PEOPLE) - CREATE YOUR OWN MENU

SUNDAY LUNCHES

CHRISTMAS PARTIES

BOOKING ESSENTIAL!

ALSO ASK ABOUT OUR WIDE RANGE OF ACTIVITIES INCLUDING:

ADULT SWIMMING LESSONS, AQUAFIT

CHILDREN'S SWIMMING LESSONS, MOTHER & TODDLER SESSIONS, CHILDREN'S PARTIES

SAUNA, SOLARIUM

AND NOT FORGETTING OUR 'NATURE'S WAY' BEAUTY CLINIC WITH A FULL RANGE OF TREATMENTS INCLUDING MESSAGES, WAXING, AROMATHERAPY, FACIALS, MANICURES ETC.

TELEPHONE NOW ON: **01404 822196**

OR CALL IN AND HAVE A LOOK ROUND!

HDR

Records & Pop Memorabilia Wanted

Good prices paid for the following

Records. CD's, Rock & concert Memorabilia

Tour Programmes/ Old Tickets/ Magazines/ Sheet Music



All types of music, large or small collections

Rock - Pop - 50's - 60's - 70's - Punk - 80's

John W Griffiths

Phone: 01404 823480

Mobile: 07836 369740

Email: hdicksrecords@yahoo.co.uk

Whimble Village Week 2011



an Open Meeting
at 7.30pm on Wednesday 20th October
in the Committee Room of the Victory Hall

It will soon be time to start planning for next year's Village Week.

This year it was all done in rather a rush so we have the opportunity to make next year even better. Arrangements are therefore being made for a Open Meeting to discuss next year's Village Week.

If you have a view on Village Week, any suggestions or criticisms, or you would just like to be involved - please come along. We need your help.

Bob Scanlan



EASTERBROOK, EATON LTD

Chartered Accountants-Registered Auditors



Relax!.....let us take care of all your Taxation,
Accountancy and Business affairs.

For a *free initial consultation*, contact us at
8 Jesu Street, Ottery St. Mary, EX11 1EU

Tel: 01404 812555

Email: advice@ee-osm.co.uk

Web: www.easterbrooks.co.uk

We are also Agents for the **Nationwide Building Society**



**OTTERY ST. MARY CHORAL SOCIETY (OSMCS)
FOR YOUR DIARY NOW!!! OSMCS CHRISTMAS CONCERT
SATURDAY 11th DECEMBER 2010
7.30pm in OTTERY ST. MARY CHURCH**

The programme includes Schubert's Mass in A Flat, Special Carols, Orchestra Pieces, and favourite Carols for YOU to sing too!

The full orchestra consisting of 20-25 musicians is locally recruited, giving added brilliance to our popular concerts; you will be able to enjoy this wonderful music in the "Spirit" of Christmas, along with a nice glass of wine and festive mince pie! OSMCS is a community choral group, which has been part of local history and culture for over 100 years. OSMCS contributes to charities and local causes as part of its community spirit.

Tickets for the Christmas Concert, including your programme, will be £9.50 for adults, £4.50 for young people under 16yrs. and will be available from the beginning of November from Choral Society members or from STAGE STRUCK in Ottery St Mary on telephone Number 01404 - 811311.

So make a firm date with us now, to celebrate Christmas together on 11th December, 2010, with a feast of good music, hospitality, and plenty of that OSMCS "Community Spirit".

Garden Design and Construction
from a single border to a total make-over

**A PROFESSIONAL SERVICE WITH EXPERT
PLANT ADVICE - FREE CONSULTATION**

Golden Leaf
L a n d s c a p e s

Louise Turner N.D. Hort

Robert Mogridge R.H.S. Cert Hort

Tel 01837 89285 Mob 07811781137

e-mail: info@gardenlandscapes.co.uk

www.gardenlandscapes.co.uk

Mister Fixer

I can Restore or Enhance
Your Photos

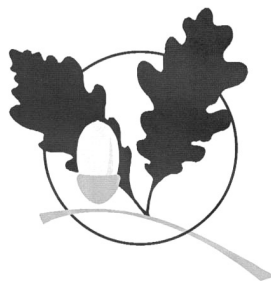
I can Design, Build
& Maintain Your Web Site

I can Fix Your PC
and Provide PC Tuition

To discuss your requirements
with no obligation,
call Alex on 01404 822800 or
email enquiries@misterfixer.co.uk

Oak Building Services

Quality works at competitive rates



renovations
extensions
patios & fencing
decoration
bathrooms
kitchens
roofing
carpentry
maintenance

References for all past projects available

Contact Trevor Oakaby
at Brickyard Cottage, Whimple EX5 2PP
on 01404 822655 evenings & weekends



Reg no: 4094



O'DELL PLUMBING & HEATING

Tel: 01404 811773 Mobile: 07974 818833

FOR ALL TYPES OF GAS AND OIL HEATING INSTALLATIONS.

BOILER SERVICE, REPAIR & BREAKDOWNS.

BATHROOMS & SHOWERS.

UNVENTED HOT WATER SYSTEMS.

UNDERFLOOR HEATING.

Wasters of Whimble

Solar panels community meeting 10th October 7 pm Victory Hall

We are very excited by the recent developments in Solar panels and the new 'Feed in Tariffs' introduced in April this year to encourage sustainable energy production.

A detailed piece was included in the last Whimble News but here are a few statistics based on an average household:

- A PV (photovoltaic) solar panel generates electricity (whereas a thermal solar panel just heats water).
- Depending on the available roof space, the direction it faces, and the type of roof, panels of 2, 3 or 4KW can be installed.
- A 2KW panel could typically generate 2,000kWh of electricity in a year.
- An average house uses about 1,000kwh a year, so this would save £130 per household.
- The remaining 1,000kWh would be exported to the National Grid who would pay back £30 per year to the household. (The 'export tariff' is 3p per kWh.)
- A 1kw panel costs on average around £7,000 fully installed, while a 4kW panel would cost about £15,000. The panels can be bought either by the homeowner or by an investor.
- Whoever owns the panel is guaranteed by the government a 'generation tariff' of 41.3p per kWh. For an average household with a 2kW panel, this could provide the owner with an income of £826 per year. Linked to inflation and guaranteed at that rate for 25 years for all installations up to April 2012.
- A homeowner who buys the panel themselves will earn the generation and export tariffs as well as having the direct benefits of savings to the home electricity bill.
- If an investor paid for the panel he would take the generation tariff. The homeowner would still get the savings to the home electricity bill and possibly some income for unused 'exported' electricity.
- Each home could save an estimated 1.2 tonnes of CO₂ emissions per year and £160 – for no outlay if an investor is used, and much more (about £986) if they buy the panel themselves.

In these days of cuts this is a government initiative that has been guaranteed. Not all homes will be suitable for a panel, but homeowners will be given a full survey to assess suitability.

Whimble is more suited to solar than other forms of renewable energy and being so far south in the UK we do get higher sunshine strengths.

Come to the meeting. It is free (donations always welcome towards costs). Bring your neighbours and friends - it doesn't matter if they live outside of the village.

There will be an expert in renewable energy, a solar panel expert and a funding facilitator. They will make a presentation, then we will have a break for refreshments to give people time to think and afterwards there will then be an opportunity to ask questions.

Let's make Whimble the first solar village in Devon and aim to install solar panels on 100 homes!

10.10.10 is a Global Day of Doing. If you haven't already signed up for the 10:10:10 initiative to cut your carbon emissions by 10% in this year, please think about doing so. The website (www.1010global.org) has many interesting ideas on reducing energy consumption and saving money as well as CO₂.

Any enquiries please contact:

Jenny Sanders
Alison Betts

01404 823015 jls.sanders@btinternet.com
01404 823967 alison.betts@yahoo.co.uk



Flow Rite

PLUMBING & HEATING

All aspects of plumbing undertaken
Professional Wall & Floor Tiling
24 hour emergency call-out
NO CALL-OUT FEE
Competitive Pricing – Free estimates

No job to small – give us a call:

07515 711907 or 07743 309096
or 01626 859037

Devon Oil Heating Ltd Specialist Repair and Maintenance of Oil-Fired Boilers, Aga and Rayburn Cookers

- Fast friendly reliable service
- Heating and Hot Water System Fault Diagnosis and Repair
- Oil Tank Replacement
- Boiler Replacement
- Plumbing Services
- Grant Service Agent



OFTEC registered
C8816



01392 207869

Mob 07799012404

www.devonoilheating.co.uk

DOG GROOMING

- 🐾 All aspects of dog grooming tailored to suit your requirements
- 🐾 Clipping and hand stripping
- 🐾 Holistic grooming (with essential oils)
- 🐾 Pick up and drop off service available
- 🐾 Micro Chipping/ Pet ID Advice
- 🐾 Fully Insured
- 🐾 Canine first aid qualified
- 🐾 Warm, friendly and relaxed environment

Please call at any time for more info or quotation.



Ali smith

Tel: 01404 822979
Mob: 07837593411

Home run business
3 Lees Meadow, Talaton,
Devon, EX5 2SG

JULIAN WILSON Electrical Contractor

1 Higher Woodhayes
Farm
Whimble

Tel: 01404 822641

Your Friendly local Bed and Breakfast



David Brown
Holway Barton
Whimble
Exeter

Telephone: (01404 822477)

Visiting Practice

Day and evening
Appointments by arrangement

QUALIFIED



CHIROPODIST

BOB SHEEHAN MSSCh MBCrA

3, Railway Cottages
Whimble
Exeter

01404 822372



Registered Charity No: 1035316

If your child is aged 3 years or over, and you are looking for a fun, caring, safe and educational pre-school. Then look no further;

Whimble Pre-School has it all!

5 great reasons to choose Whimble Pre-School

- 1. It is run by caring staff with many years of child care experience**
- 2. It has unique link with Whimble Primary School and all the 'rising fives' meet regularly with their new teacher**
- 3. There is a commitment to 'learning through play' offering a variety of indoor and outdoor activities**
- 4. We provide a safe, secure and stimulating environment**
- 5. Healthy outdoor activities are undertaken on a daily basis**

Whimble Pre-School sessions

Mondays	9-12.00noon
Tuesdays	9-12.00noon, Lunch Club* 12pm–1pm (rising fives only)
Wednesdays	9-12.00noon
Thursdays	9-12.00noon, Lunch Club* 12pm-1pm
Fridays	9-12.00noon, Lunch Club* 12pm-1pm

***All Lunch Clubs are charged at an additional price of £2.50**

To discuss your child's specific pre-school needs call Tanya Chitty, Senior Play Leader, Whimble Pre-School on: 07794652549

If you are thinking of Whimble Pre-School, pop in or call for an application form. It is never too early.

Whimble Cricket Club



Whimble Cricket Club has come to the end of a very successful season on and off the field with promotion for the first team as Champions and the second team maintaining there current league standing with a fine win on the last day of the season, this was followed by the very successful Bad Shepherds band night (thanks from everyone at WCC to Geoff Delves and his willing team of helpers) which was a brilliant night and has been reported on in this issue

The first teams success this season was built on a classic mix of youth

and experience and the guiding hand of a superb skipper Jono Burden, the younger lads Will Cleal, Mike Searl, Matty Richards and Chris Pulfrey really stepped up this season and all produced individual match winning performances.

The league table below really shows the domination of the first team winning Three games more than any other team in the league, Promotion has now paired us with two of our local rivals, Feniton and Ottery, which is something we really look forward to next season.

Kevin Thompson

Club/Team	P	W	L	W-D	L-D	T	A	C	Mch	Bat	Bowl	Pen	Total
Whimble	18	13	2	1	1	0	0	1	144	69	77	0	290
Countess W	18	10	2	4	1	0	0	1	132	71	72	0	275
Kentisbeare	18	9	6	2	0	0	0	1	108	75	58	0	241
Filleigh	18	7	7	2	0	0	1	1	94	58	50	0	202
Babbacombe	18	7	6	1	2	0	1	1	92	34	67	0	193
Kilminster	18	3	6	4	3	0	1	1	72	65	55	0	192
Upottery	18	6	7	0	4	0	1	0	74	58	58	0	190
Roborough	18	4	7	1	4	0	1	1	66	48	58	0	172
Woodbury	18	4	12	1	1	0	0	0	46	52	55	0	153
Kingskerswell	18	1	9	2	2	0	3	1	50	39	39	0	128



What could you do with ten minutes of your time?

'The Mortgage Makeover'

Ten minutes is all it takes to determine if you're paying too much for your mortgage.

Ten minutes is all it takes to see whether we can save you thousands of pounds.

Ten minutes is all it takes to decide whether you can afford to pay your mortgage off early.

Ten minutes is all it takes for impartial, independent financial advice.

Contact Stephen Clare on 01404 823375

or email – stephenclare@thinkpositive.co.uk

or by post - Longfield Whimble EX5 2TF



Your local

plumbing and heating experts



- Gas, Oil, LPG or Solar
- New installations
- Servicing, breakdowns and repairs
- Help and advice
- Buy Now Pay Later options available

For all types of heating and hot water

Call **01392 811 420**

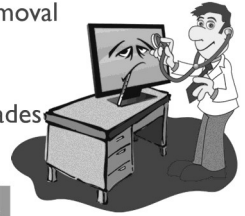


www.climatesolutionsouthwest.co.uk

Computer Problems?

Laptop & Desktop Service & Repairs

- Virus & Spyware Removal
- Broadband Help & Installations
- Ram Memory Upgrades
- Home Networking



david knightley
home computer services

Friendly, professional service
Call **01392 662336**

25 Wonford Road St Leonard's Exeter EX2 4LH
M: 07971 818129 W: www.fixitexeter.co.uk

PEK BUILD

BRICKWORK&MASONRY

New build-extend-refurbishment-renovent
alteration-barns-hardlandscape-repairs

Telephone Mark on
07817097721

Email - mproberts@live.co.uk

26 Elizabeth Close
Whimble
Nr Exeter
Devon
EX5 2UT



City and Guilds
Qualified

Your friendly, reliable local tradesman..

No job too small.

The Jays



The Square, Whimble. EX5 2SL

Jan and John offer a friendly and relaxed stay at the Jays.

Close to Exeter Airport for which transfers are available

Colour TV in all bedrooms

Guest Lounge with tea/coffee.

Several local Pubs and Restaurants within easy reach -(pick up service)

Bed and full Breakfast menu:

No smoking.

Phone: 01404-823614

Fax: 01404-823629

e-mail: jaydiscombe@supanet.com

walk 4 life

EAST DEVON WALK THIS WAY

'Walk This Way' is an accredited scheme that was introduced in East Devon to encourage people of all ages, including those with health and mobility problems, and those recovering from illness to walk for their health.

The health walks are led by qualified volunteer walk leaders who have undergone the national 'Walking the Way to Health' training, as well as training in first aid and resuscitation.

Health Walks are available in your area on **Wednesday**. For more information please contact Andrew Dare on **01404 814317**.



Take 20-30% off your household bills every month!

Shop with this unique CashBack card and you can save money on your household bills every time you buy:

- ✓ food and fuel at Sainsbury's ✓ clothing
- ✓ DIY ✓ health and beauty products
- ✓ household and electrical goods

at thousands of leading high street stores!

Simply top up the CashBack card with the amount of money you choose, then use it every time you go shopping! 5% of everything you spend at participating retailers comes off your monthly bill - as cashback!

Spend £450 a month on your shopping? That's over 25% a month off a typical bill!

Sainsbury's  Argos   B&Q  TOPSHOP 

This card is available exclusively to members of the Utility Warehouse Discount Club

For full details call your local distributor on: **08000 839 450**

SAVE OVER
£350 A YEAR
ON FOOD AND
FUEL ALONE!





WHIMPLE CHURCH

www.whimplechurch.org

St Mary's Church Proposal for Re-ordering

In the April/May edition of the Whimple News I indicated that I would update you on the way ahead with the re-ordering proposals when the written responses that were submitted after the open meeting in March had been thoroughly analysed. There were 192 responses and the comments and suggestions were numerous and varied. I would like to thank all those who took the time to commit their thoughts on this subject to paper.

The process of analysing those responses is now complete. Mrs Gerri Turner and Mr Branco Love did a thorough job checking through all the replies and the Parochial Church Council (PCC) has had a chance to consider what was submitted. The principal outcome of this process is that a majority of respondents were generally opposed to the re-ordering proposal that was presented at the meeting. Consequently that proposal will not be taken forward.

There were a number of very positive suggestions about more modest improvements and alterations that could be made to the church building without affecting the bulk of the medieval pews. Some of these suggestions had significant support from other respondents and, consequently, where these may promote the mission of the church and improve the experience of those using the church building they will be considered further by the PCC. But please be reassured changes will not be implemented without suitable consultation.

Again, I apologise that the communication between the PCC and everyone else was not better on this important matter.

Revd Rob Wilkinson

On 2nd October at 8.30am in the Victory Hall, Whimple Church will be hosting a **Men's Breakfast** on the theme of "From farmer to parson". After a fry-up breakfast, Revd Canon Dennis Gurney OBE will be speaking about his experience of faith and farming. This should be an interesting and thought-provoking occasion when all men, and particularly those with a farming background, are welcome. The cost is £3 - please telephone David Smith (822123) to reserve your place.

The **Impact weekend away at Bernard's Acre** for 10-13 year olds will take place over the weekend of 8th - 10th October. The weekend will be packed with great activities, games, chill-out time with friends as well as opportunities to hear more about the Christian faith. Please contact Ian & Maggie Spicer for further information (823640).



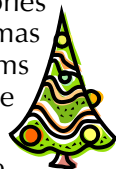
On Saturday 16th October at 7.30pm in the Victory Hall Whimple Church will be hosting Kings Drama's production of "**Murder at Joe's**" a murder mystery staged around a three course dinner. Tickets are £7.50 and either full tables or individual places can be reserved by contacting Kate Hamilton (823201).

Our special **Harvest Service** this year will be at 11.00am on 17th October. Please also join us for our **Remembrance Service** on November 14th at 10.55am when we remember and give thanks for those who have given their lives for the peace and freedom we enjoy today.

It's shoe box time again! Whimple Church is participating again this year in Operation Christmas Child - packing up shoe boxes with children's toys for needy children. To contribute a box this year, please contact Maggie Spicer (823201) or visit www.samaritanspurse.uk.com for more information. Why not bring your wrapped and filled shoe box to our Celebration Service on 21st November when we will be showing a DVD about the work of Operation Christmas Child?



We look forward to welcoming primary school aged children from across the village to this year's **Christmas Fun Day** on Saturday 4th December which will be held from 10:30am to 3:30pm in the Victory Hall, at a cost of £2 per child. There will be Christmas crafts, songs, games, stories and lots of fun! Meanwhile parents can do those important pre-Christmas jobs that they want to do without having children in tow! Booking forms are available from the back of church and the post office. Numbers are limited so please book early to guarantee a place.



Christmas Services. Christmas will be upon us before we know it. Please contact Gerri Turner (822587) if you would like to sing in the choir at the Advent and/or Christmas carol services.

Our special Christmas services in Whimple this year will be as follows:

- Sunday 28th November, 6.30pm Advent Carol Service
- Sunday 5th December, 3.00pm Christingle Service
- Sunday 12th December, 11.00am Christmas Celebration Service
- Sunday 19th December, 6.30pm Carol Service
- Wednesday 24th December, 11.30pm Midnight Communion
- Thursday 25th December, 11.00am Christmas Day Family Service

We do hope that you will be able to join us at one or more of these services, or indeed on any Sunday, when you will find a warm welcome.

Whimble History Society

The Auction of Pledges and Promises will take place on Friday 15th October in the Victory Hall at 7.30 p.m. We hope once again to make this a social evening and members and friends will be encouraged to bring their own 'refreshments' along. Tables will be laid out in the main hall. Half way through the Auction there will be a short break when tea and coffee will be available. Entry will be by catalogue, costing £1.00, which can be purchased in advance from the Post Office or on the door. The entry fee includes a lucky raffle number for a bottle of whisky. The Committee has already secured over 60 varied promises/pledges.

Please remember that this is our main fund raising event and it is essential it is a success. This will enable us to continue to run the Heritage Centre in the manner that we have now all become accustomed.

Can You Help?

The History Society is looking for someone to help out with the running of the Heritage Centre. Would you be interested in planning and helping out with the preparation of new displays? Are there subjects about the village and its history which you would like to see in the Heritage Centre? Each year we aim to have a specific new theme as well as changing some of the content of the existing displays. We need to start planning now for next year's exhibits so your assistance and imagination would be of great help to the Society. In addition our exhibits need care and attention just like anything else and if you could spare the time to help with this conservation we would be delighted to welcome you to our volunteer group. Full guidance will be given initially and help is always available from the Curator and committee members.

If you would like to support your Village Heritage Centre in this way please ring Alan Smith on 822977 to get more information.

Following the success of our joint efforts with the local Primary School with the Wassailing Princess competition and the School Exhibition it has been decided that, as from the 1st January 2011, we will offer free membership to local school children. In fact the local Primary School has been invited to run a competition to produce a junior membership card.

The Committee has decided that next year's exhibition should highlight local sport as it will be twenty years since the Knowle Cross Recreation Centre was opened. Consequently, we would appreciate it if any one who has memorabilia or personal recollections that we could use in our Exhibition would contact either Alan Smith on 822977 or Roger Smith on 822244 .

The Society is also hoping to sponsor a day of arts and crafts entitled 'Craft in Whimble' in the Victory Hall on Saturday 16th April 2011. The idea is that anyone interested in exhibiting, or demonstrating their particular art or craft, can do so at this event. Anyone wishing to participate please contact Adrian Williams on 822430.

For all your daily requirements
of
MILK, CREAM, EGGS, FRUIT JUICE
ORGANIC, SOYA & GOATS MILK
NEWSPAPERS & MAGAZINES
POTATOES, FRUIT & VEGETABLES

also
BIRD FOOD REQUIREMENTS AT COMPETITIVE RATES

Delivered to your door
SPIT ROAST SERVICES ALSO AVAILABLE

Please contact
VICTOR & MARIAN DANIEL
Summerbridge, Whimple, Devon
01404 822458

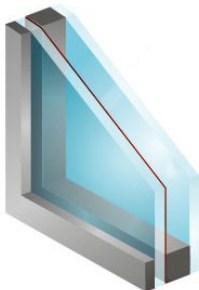


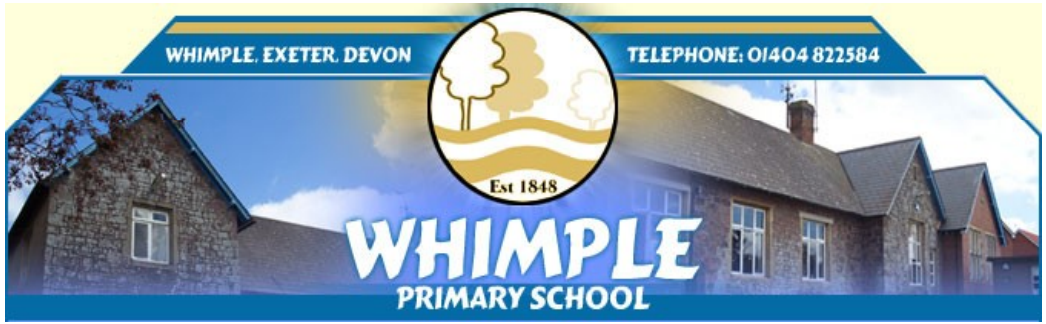
M A G Windows

for double glazing
and replacement doors

Stoneygate, Whimple

01404 823078





Congratulations to all pupils and staff of Whimble Primary School who ended the academic year on a high achieving fantastic results in the Year 2 and 6 SATs compared to the National averages.

SATs Results

KS1 results

RESULTS OF TEACHER ASSESSMENT										
Percentage at each level										
		W	1	2	2C	2B	2A	3 or above	Disapplied Children	Absent Children
Speaking and listening	Whole School	0	0	38				63	0	0
	National	2	11	65				21	0	0
Reading	Whole School	0	0		0	25	25	50	0	0
	National	3	13		12	22	24	26	0	0
Writing	Whole School	0	0		13	38	25	25	0	0
	National	4	15		21	28	20	12	0	0
Maths	Whole School	0	0		0	38	0	63	0	0
	National	2	8		16	26	27	21	0	0
Science	Whole School	0	0	50				50	0	
	National	2	9	67				22		



KS2 results

TEST RESULTS							
		Percentage at each level					
		Below level 3	3	4	5	Pupils not entered	Pupils absent
English	School	0	0	32	68	0	0
	National	6	14	51	29	0	1
Reading	School	0	0	32	68	0	0
	National	7	7	38	47	0	1
Writing	School	0	5	45	50	0	0
	National	5	27	48	19	0	0
Mathematics	School	0	0	55	45	0	0
	National	5	15	44	35	0	1

We are really pleased with how well the children have done in their SATs this year. I am sure you will join me in thanking all the teachers and staff for the teaching and support they give your children, which enables them to do so well. Children at this school continue to flourish and develop into responsible citizens with the skills for lifelong learning.

We would also like to thank parents for supporting all we do in school and of course the children for being such keen learners.

School Governors

As with many organisations, August was a quiet month for the WI. The highlight of the month was the tea party at the home of Ann Bowden. This has become an annual social occasion much appreciated by members, particularly so this year as Ann and Peter had only recently returned from Australia. The Autumn programme commenced with a superb talk by Frank Lech, who spoke of his life with no arms. His achievements, sense of humour and attitude to life all added up to an evening of inspiration. If you are interested in joining the WI do contact the President, Avril Ellingham (822945) or just come along to a meeting at the Victory Hall. We are always delighted to welcome new members.

Rosemarie Burrows

theWI
INSPIRING WOMEN

Whimple Victory Hall



*Come and Join us for a
Soup and Sarnie Lunch*



*12.00noon until 1.30pm
on Saturday 23rd October
and Saturday 27th November*

legal expertise for everyone

Everyys has been providing quality legal expertise, delivered professionally yet personally to families and businesses across the region for many years.

- Family & Matrimonial
- Conveyancing
- Employment Law
- Buying/Selling Businesses
- Personal Injury *No*
- Property, Contract & Inheritance Disputes *Win No*
- Dispute Resolution *Fee*

- Tax Planning
- Licensing
- Wills, Trust & Probate
- Criminal Law

everyys
solicitors

**Call our Honiton team of experts on 01404 41221/43431
or visit www.everyys.co.uk**

Regulated by the Solicitors Regulation Authority

W.A.R.T.S. UPDATE

October 2010

Hello and welcome to all new and existing members of W.A.R.T.S (Whimble Against Rising Tariffs).

As you will now be well aware our aim is to periodically secure the services of the cheapest oil provider that we can to deliver to our members in the village. We are very pleased to announce that our membership has risen to more than 140 households.



Our last order will have been made on 23rd August 2010. We ordered 34,400 litres of heating oil for 50 drops in the village and by and large everything went smoothly. We secured a price of 38.85ppl against a best price for 500 litres of 41.90ppl and a worst price of 45.00ppl.

Please remember to add the dates below to your calendar/diary for future orders and that payment is required upfront if you have not purchased from the nominated supplier in the past

Intended Order Dates for 2010: 29th November

and for 2011:

17th January 21st March 23rd May

22nd August 28th November

We would kindly remind you that all orders for oil should be placed at least one week before the order date. (Allowing a further 10 days for delivery)

There is a minimum order requirement of 500 litres

Existing members (and any potential new members) **without e-mail** are invited to **contact John Aiton on 01404 823155** to place their order or register their details (name/address/postcode/phone number).

All others **with** access to e-mail may contact **Graham Batten** with their order/registration details at utilitiesgb@btinternet.com.

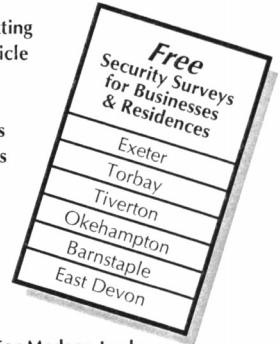
LOGS FOR SALE

CALL GORDON PODBURY ON 07808 353849

Complete Locksmithing Service



- 24 Hour Emergency Service
- Standard & Computerised Key Cutting
- Duplicate Keys Cut For Any Vehicle
 - Car Transponder Keys Cut
- 24 Hour Lock Out Service
- Replacement Lock Installations
- Aluminium & Upvc Door Locks
 - Master Key Suites



MASTER LOCKSMITHS

- Free Security Assessments
- Locks Supplied & Fitted
- Safes Opened
- Burglar Alarm Installations
- CCTV Systems



Agents For Medeco Locks



01392 411887
FAX 01392 424817



A Wide Range of Security Products Available For Demonstrations At...

- 131 Sidwell St. Exeter EX4 6RY
- Unit 1, The Space Place, Alphinbrook Rd. Marsh Barton, Exeter.

www.guardian-security.sagenet.co.uk

Halos

UNISEX HAIRDRESSERS

Advanced Colour Courses with L'Oreal and Wella
Open: Tues - Saturday: Late Night by appointment.

Free parking by kind permission of the Thirsty Farmer

TEL 01404 823400

New Inn Cross, Whimble. Devon. EX5 2TS



Picture Framing

Framing of paintings, photographs and other Memorabilia undertaken, together with processing, printing of digital images and enhancing old photographs for framing.

To discuss your requirements or view samples of our work please contact:

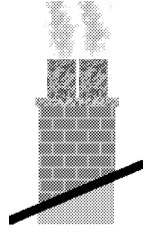
Adrian Pike

AD Framing of Rockbeare

Tel: 01404 823753 / 07770 994437

Easy parking

Chimneys Wood Burners Fires



**Swept, Installed, Repaired,
Lined and Built**

"All your chimney needs"

Alf Butler

Tel: 01404 811843

**A fully insured and HETAS
registered Company**

Matured Aberdeen Angus Beef and Lamb from Organic Family-run Farm in Clyst Hydon, near Whimple

- Individual cuts and boxes
- Delivered free to your door
- Prices start from £25

**Shop online at www.peradonorganicfarm.co.uk or call us on
01884 277682**



Working Hand in Hand with Nature



The Veterinary Clinic, Whimple

Where your animal's health is our top priority

Consultations by appointment

We also offer routine surgery and dental treatment.

For an appointment and for all veterinary enquiries, please call the surgery on
01404 823230

Surgery Hours:

Monday and Wednesday 5.00pm – 7.00pm

Tuesday and Thursday 8.45am – 9.45am & 3.30pm – 5.45pm

Friday 3.30pm – 5.45pm

Saturdays 10.30am – 12.00 noon

All afternoons will be staffed by a Receptionist from 2.30pm

24 hour emergency service 01404 823230

West One Hair Design

For Ladies and Gentlemen

**3, The Old Village Hall, West Hill Road, West Hill,
(Nr West Hill Garage)**

for an appointment please call **01404 814913** or
Call in for free Consultation.

Our qualifications include Hairdressing NVQ 1 & 2
Diplomas in: Toni & Guy advanced Technical Colouring, Colour Correction,
L'Oreal Colour Keys, Techniques 2000, Cutting and Perming.

Tough Choices



Public spending is under pressure and we face tough choices about how to deliver important local services while reducing costs and saving money.

We would like to invite you to one of our public meetings to meet the Leader of Devon County Council. Hear first hand what the issues are and tell us what you think is most important to you and your community.

Why not have your say. . .

PUBLIC MEETINGS

All at 6.30pm

Thursday 30 September
Cullompton, Town Hall

Monday 11 October
Exeter, Central Library

Thursday 14 October
South Molton, The Amory Centre

Tuesday 25 October
Ashburton, Town Hall

Tuesday 2 November
Ivybridge, Watermark Centre

Friday 12 November
Exmouth, Elizabeth Hall

Tuesday 16 November
Bideford, Town Hall

Thursday 25 November
Okehampton, Charter Hall

Can't make a meeting? Give us your views www.toughchoices.co.uk

Whimple Victory Hall

The Annual General Meeting

of the Trustees of Whimple Victory Hall

will be held at 7.00pm on Monday 11th October

in The Victory Hall.

This is an open meeting and everyone is welcome.



DEVON HOME IMPROVEMENTS

LIMITED

"Why Move - Home Improve"

Your local home improvements specialists for all those building and maintenance needs

Devon Home Improvements can provide you with hands on design and planning, together with a comprehensive supply of tradesmen and materials

We pride ourselves on our expertise and we believe we offer the most friendly and efficient service at very competitive rates.

- **Kitchen & bathroom design / installation**
- **Exterior & interior decoration
incl. plastering services**
- **Landscaping, patio, decking, garden walls,
garden structures**
- **P.V.C.u Facia & guttering incl. cladding**
- **Garage door installations**

Call today for your no obligation quotation

01884 277794

Or visit our website at

www.devonhi.com

Organisations in Whimble

Whimble Parish Council	
<i>Chairman:</i> John Griffiths	823480
<i>Clerk:</i> Gerri Turner,	823385
St. Mary's Church	
Rev. Rob Wilkinson	822521
<i>SClub11, Impact & Contact</i> Phil and Rebecca Dominy	822163
Devon County Councillor	
Peter Bowden	823450
East Devon Councillor	
Andrew Dinnis	850363
Whimble Primary School	
<i>Headteacher:</i> Mrs. S. Langley	822584
<i>Chair of Governors:</i> Helen Penney	822948
Whimble History Society	
<i>Chairman:</i> Richard Webber	822038
<i>Secretary:</i> Roger Smith	822244
Whimble Mothers Union	
Margaret Burrough	822257
Whimble Pre-School & Toddler Group	
<i>Chair:</i> Samantha Walker	822649
<i>Playleader:</i> Tanya Chitty	
<i>Toddlers:</i> Louise Fenner	822272
Whimble Womens Institute	
<i>President:</i> Avril Ellingham	822945
<i>Secretary:</i> Ann Bowden	823450
Whimble Over Sixties Club	
Beryl Iball	822905
Whimble Recreation Trust	
<i>Knowle Cross Sports Ground:</i> Mr P. Garraff	891206
Whimble Village Produce Association.	
<i>Chairman,</i> Adrian Williams	822430
Whimble Football Club	
<i>Chairman:</i> Geoff Delves, <i>Secretary:</i> Karen Delves	823258
Whimble Tennis Club	
<i>Secretary:</i> Roddy Bridge	822057
<i>Treasurer:</i> Adrian Rushforth	823276
Whimble Cricket Club	
<i>Booking Secretary:</i> Karen Delves	823258
Whimble Victory Hall	
<i>Chairman:</i> John Discombe	823614
<i>Secretary:</i> Pam Scanlan	822262
<i>Booking Sec:</i> Ali Tierney	822724
Whimbletons	
Ed Hitchcock	823194
Wasters of Whimble	
Jenny Sanders	823015
Alison Betts	823967
St. Mary's Bellringers	
<i>Captain:</i> Liz Silk	822389
Whimble Scout Group	
<i>Group Scout Leader (and Marquee Booking):</i> Alex Spry	822844
Whimble Book Group	
Katy Howard	823038
Whimble Youth Club	
<i>Leaders:</i> Mino 07902 651989 or Sue 07964 211195	

The Whimble News Team

Editor

Ed Hitchcock 823194

Production

Bob Scanlan 822262

Sally Wilde 823246

Delivery and Advertising

Ed & Nicky Hitchcock 823194

Community diary

Nicky Hitchcock 823194

Treasurer

Miles Leonard 822415

Julie Millward 823985



DESIGN | PRINTING | COPYING | FINISHING

Kevin Thompson

Tel: 07796 265526

Email: kevin@thompsonprinters.co.uk

Web: www.thompsonprinters.co.uk

**Unit 52 | Basepoint | Yeoford Way | Marsh Barton
Exeter | Devon EX2 8LB**

LIVING AND SELLING LOCALLY



HALLS ARE PLEASED TO OFFER THE FOLLOWING SERVICES

- FAMILY OWNED BUSINESS
- STRONG LOCAL KNOWLEDGE
- SUPERB COLOUR DETAILS
- HIGH IMPACT ADVERTISING
- FREE VALUATIONS
- ACCOMPANIED VIEWING
- FLOOR PLAN SERVICE
- RESIDENTIAL LETTINGS

TEL: 01404 812000

View all properties on the UK's No.1 website: www.rightmove.co.uk



**15 Broad St, Ottery St Mary, EX11 1BY
Tel: 01404 812000 Fax: 01404 815777**

The New Fountain Inn

Whimble, Devon



A Traditional Olde Freehouse Village Inn

*As recommended by CAMRA ,
The Good Beer Guide, The Real Ale Guide
and the Quiet Pint Guide*

*Real Ales
Home Cooking*

Lunchtime & Evening Meals 7 days a Week

*Sunday Roasts etc - Vegetarian Choices
Handmade Desserts, Children's Menu
& Toddler Portions*

*Join us for a Friendly Drink, Bar Snack or
an A La Carte Meal*

Bookings are Advisable

Tel: 01404 822350