

# *Whimple News*

---



---

Oct/Nov 2007

---



**QUIZ NIGHT EVERY OTHER  
SUNDAY**

**Starts at 8.30pm  
EVERYONE WELCOME!**

# **The Thirsty Farmer**

**WHIMPLE, EXETER, DEVON, EX5 2QQ**

**Telephone: 01404 822287**

**TRADITIONAL HOSPITALITY AT ITS BEST**

**Varied A La Carte Menu changed daily  
alongside traditional 'Farmers Favourites'**

**\*Great Selection of fine Wines\***

**Open all day Friday, Saturday & Sunday**

**LIVE MUSIC DATES**

**19th October - El Cojones**

**2nd November - 36FF**

# WHAT'S ON IN WHIMPLE

## October

- 10th Christianity Explored Course, the Rectory, 7.30pm
- 13th Hospicare Coffee Morning & Christmas Card Sale, Victory Hall, 10.00am -12.00pm
- 15th Victory Hall AGM in the Victory Hall Billiard Room at 7.00pm
- 15th Parish Council Meeting, Victory Hall, 7.00pm
- 19th Whimble School Cake Stall, School Playground, 3.30pm
- 20th Soup and Sarnie Lunch, Victory Hall, 12.00 noon – 1.30pm

## November

- 3rd Fireworks Night, Cricket Club, bar open 6pm, fireworks at 7.15pm
- 17th Soup and Sarnie Lunch, Victory Hall, 12.00noon – 1.30pm
- 19th Parish Council Meeting, Victory Hall, 7.30pm
- 24th Craft Fayre, Victory Hall, 1.00pm - 4.00pm

## December

- 2nd Advent Carol Service, Whimble Church, 6.30pm
- 7th Over 65's Christmas Party, Victory Hall, 7.00pm for 7.30pm
- 8th Orchard Harmony, St Mary's Church, time tbc
- 9th Christingle Service, Whimble Church, 3.00pm
- 16th Christmas Celebration Service, Whimble Church, 11.00am
- 17th School Christmas Fayre, Victory Hall, 2.00 - 3.20pm
- 23rd Carol Service, Whimble Church, 6.30pm
- 24th Midnight Communion, Whimble Church, 11.30pm
- 25th Christmas Day Service, Whimble Church, 11.00am

## St Mary's Church

### Monthly Programme of Services

1st Sunday	8.00am	Holy Communion
	11.00am	Celebration Service
2nd Sunday	11.00am	Holy Communion
	10.45am	Sclub11/Impact in the Scout Hut
3rd Sunday	8.00am	Holy Communion
	11.00am	Morning Service
4th Sunday	11.00am	Holy Communion
	10.45am	Sclub11/Impact in the Scout Hut
5th Sunday	11.00am	Joint Benefice Communion

Please use the Whimble Diary held in the Post Office for checking availability of venues and booking events.

If your Association has an event which you would like listed above please contact **Nicky Hitchcock** on 823194 or e-mail [nickyjhitch@tiscali.co.uk](mailto:nickyjhitch@tiscali.co.uk)

**PETER SALTER A.I.R.T.E.**

**MOBILE MOTOR ENGINEER**

(Member Institute of Road Transport Engineers)

Servicing & M.O.T. Preparation  
Engine Overhauls & Bodywork Welding  
Cars & Commercial Vehicles

**Telephone: Whimple (01404) 823054**

# Talaton Inn

SUNDAY LUNCH - DAILY SPECIALS  
BAR MENU AND SNACKS  
RESTAURANT OPEN TUESDAYS TO  
SATURDAY EVENING



**Good Ales, Good Food  
Pop in and say Hello**

**Tel: 822214**

## Ed the Ed

I know that it is Autumn when it starts to get a little chilly in the morning on the bike ride to Ottery each day. Do you ever have ice cream headaches when you have eaten ice cream too quickly? I got one of those one morning at the end of Church Road, after cycling for about 5 minutes one very cold day...this is starting to get silly, I thought. If it got much colder, I had visions of my hands freezing to the handlebars, and having to be de-iced using a hairdryer...whatever one of those is. So I have laid up my Tour de France lycra all-in-one with reinforced gusset.

I am delighted to include a broadside from Geoff Gardner on behalf of the Over 60's who I had a pop at in the last editorial. It is pleasing to see that at least one of them can drag themselves away from their wild Bacchanalian pleasures to put pen to paper, wrap it round a brick and lob it though our window. If only they would stop mooning as their coaches leave the village. ....it is very difficult to put a name to a face, or whatever. But I would recognise some of those tattoos again.

This edition has some very important information about changes to the arrangements at the Whimble Doctor's surgery from 1st October- it will be moving to an appointment-based system, which I think will be a boon to the village.

Don't forget to support the Fireworks Evening, generously organised by Graham at the shop, on Saturday November 3rd. I understand that the fireworks will be ignited about 7.15pm but the cricket club will be open for beverages from 6.00pm.

I unfortunately missed the Cider with Roadies event on 27th September, but I hear it was a great success, so well done to Alan Smith of the History Society for all his hard wok on that. And a well deserved thanks and well done to Geoff Delves and his team for the Plan B evening at the cricket club on Saturday 29th September.... great music as ever, and valuable funds for the cricket club.

The current Mrs H and myself were recently sat one evening, waiting for the pigs trotters to come to the boil, listening to a folk music programme on the steam radio, presented by Mike Harding. A name came through the ether, of one Jim Causley, who you will remember as the Whimble singer who made a CD (on sale in the Heritage Centre) and who kindly helped with the music at the last two Wassails. It was great to hear Mike Harding being very enthusiastic and full of praise for Jim's second CD, so well done Jim. I hope that he will still be able to support the Wassail despite his growing fame!

If you would like to submit an article, or comment on anything in the village, or in this issue, we would be delighted to receive it, either by leaving it at the Post Office, with Jim, Whimble's own Marco Pierre White of the gateaux (and of course, Alison the keen assistant following him round the kitchen with the power washer), or by semaphore flag to Bob 'where am I today' Scanlan on [bob.scanlan@eclipse.co.uk](mailto:bob.scanlan@eclipse.co.uk) by Monday 12th November.

Don't forget that the next issue will be the Christmas issue - is that scary or what?, so let us know of any activities that need publicity in the village. Our aim to publish that edition by early December.

This edition has the Over 65s Christmas Party Invitation, now being run for the first time by Ann Bowden who so bravely stepped into the void after Lucy Smith decided she wanted more time to go drinking and rock and roll. Good luck Ann and thanks !!

**Ed the Ed**



## **UNISEX HAIRDRESSERS**

**Advanced Colour Courses with L'Oreal and Wella**

**Open: Tues - Saturday: Late Night by appointment.**

**Free parking by kind permission of the Thirsty Farmer**

**TEL 01404 823400**

**New Inn Cross, Whimble. Devon. EX5 2TS**

# **Liberte**

**HOLIDAYS**

**...Your French connection South of France:**

**Long lazy sunny days in a beautiful French villa, with communal pool right on the Mediterranean coast.**

Sleeps up to six and includes patio garden with barbecue. Satellite TV, washing machine, bike and roller-blade hire, wind surfing, kite surfing and sand sailing, as well as horse riding and go carting and on the edge of a nature reserve.

Situated near all major airports (Flybe, Ryanair, Easyjet) and airport collection available. Auto train to Narbonne from Calais; 10 min drive from motorway. Prices from £70 p.p./during July and August (price based on 6 people sharing). Also countryside B & B available and assistance with house searches and relocation available.

Please visit: **[www.liberteholidays.com](http://www.liberteholidays.com)** or phone Janine or Paul on

**00-33-468-44-12-08**



# Whimple Post Office News



Many of you may have already seen the 'Bunches Brochures' that we now have available. We have had many requests for us to provide this service since the post office decided to withdraw their flowers by post. We have already placed several orders and the feedback has been very positive, the flowers are reasonably priced, (flowers from £9.99), and also include chocolates, teddies and birthday cakes. Orders can be placed at the post office, and payment is by cheque or cash.

Although we have had no new news regarding our future, details of our new pay remuneration have been released to us. It would appear that in order to keep the existing business with its customers the Post office has have to become 'more competitive' which will reduce the amount paid to us. Other changes involve the way we sell postage. We will be paid more for selling postage labels and less for selling stamps for larger items of post. Printing labels takes longer, but the difference it makes to us is quite considerable.

We are supposed to compensate for this loss of income by selling more financial products, i.e. car insurance and credit cards. We rarely sell any of these products in this particular branch so the future is a little worrying, we only hope that if we remain open after the cuts, that we will actually afford to do so. I know it is boring but it is a real case of use us or lose us.

We have now been given the last post by dates for Christmas post. Here are some of the dates for Surface Mail.

<b>Date</b>	<b>International Surface Mail</b>
Monday 1st October	All non European destinations (except USA, Canada, Middle East, FarEast, South Africa)
Monday 15th October	Middle east and far east (except Hong Kong and Singapore)
Monday 29th October	USA, Canada, Hong Kong, Singapore, and South Africa
Friday 16th November	Eastern Europe, Greece, Cyprus, Malta and Iceland.
Friday 30th November	Western Europe

Thanking you all for your continuing Support.

**Jim & Alison.**



# FROM MY WINDOW IN THE SQUARE

Edith Marie-Louise Grout

Now gently, beautiful and calm  
The quiet brook murmurs by  
How soft the light, how full of balm  
The breeze that soothes the autumn skies  
Yet here amid leaf-strewn mornings  
While pleasing sounds of autumn mild  
Things beautiful delight and pleasing sights  
Make my tender heart to smile

For me autumn is like a rhapsody and I can get quite lyrical about its beauty. In a way it is the fulfilment of the promises of spring and summer, the achievements of the hope we had. It is the time of harvest, of mists in early morning, of intricate cobwebs on windows and shrubs of brilliant colours and balmy fruitfulness. It is also the time of achievement for our young people in the village who passed their exams successfully; starting a new life full of promise and hope at university, college, an apprenticeship or perhaps a new job.

This is also the time of the year when bulb and seed catalogues drop through our letter boxes and already plenty of Christmas catalogues too. Sitting quietly by the fire I get carried away by the offers of spring bulbs; golden daffodils, brightly coloured tulips, sweetly scented hyacinths, velvety pansies with their charming, smiling faces, all shades of reds, yellows and blues of polyanthus, such a pity the birds find them rather succulent. Our Village Flower Show was better than ever in spite of the inclement growing season. Catalogues are too tempting for vegetables and flowers to grow for the show as it all takes a lot of planning. There were some outstanding entries in every section and the best flower arrangement in the show won the admiration of the judges and public at large who voted with one voice, it was heart warming.

From my early childhood in the Swiss Alps, my deep and abiding love for flowers and gardens has never left me, on the contrary – it has grown from strength to strength. My love for enchanting and peaceful places was born. I remember our mountain family walks in the summer with the bright colours and scent of the wild rhododendrons ferruginous warming on big granite blocks, the screes nearby covered with the celestial blue gentians and pink primula farinose. Then, on higher stones almost unreachable the silvery stars of the white edelweiss. All those precious moments shaped my life and helped me to act roles which give each of us our uniqueness and true self. We have inherent gifts which often have been hidden by masks or roles we have taken on. Autumn is the true time to take stock and give up roles which are not truly us.





A haze on the far horizon  
Then infinite tender sky  
The ripe rich tint of the cornfield  
And the wild geese sailing by  
And all over the upland and lowland  
The charm of the golden rod  
Some of us call it autumn  
Some others call it God

In the October and November, I love the beauty of the yellow afternoons that shimmer in The Square. Whoever could clutch it? Go forth to catch it and it is gone! It seems like a mirage when I look out of my window. Now that autumn is upon us it is fascinating to observe the natural phenomenon in the garden of the start of hibernation. It is not simply a matter of going to sleep for a long time like Sleeping Beauty, but it is far more complex.

The squirrels work hard all summer to stock up food for the winter. What else can creatures do if there is not enough food about to satisfy their hunger? So they migrate to where food is plentiful. The birds thankfully have that option as their wings take them to long distances to warmer climates. It is also up to us to feed and water the birds which stay and it is so important not to disturb compost heaps or leaf moulds because it is not only hedgehogs but worms and slow worms that may have taken up residence.



There is something I often wondered about; why do beech hedges that are clipped hang onto their leaves until springtime and yet beech trees shed their leaves like any other tree? On a sunny winter's day the clipped beech hedges look like a golden diadem round a garden. Does the fact that they are clipped reduce their vigour and food supply? Each leaf cut off in its prime must be robbing the plant of some goodness. I have not met anybody yet who could give me the answer. Whatever the reason the beauty of the clipped beech hedge in its bronze, golden mantle is a welcome sight.

The thing that goes furthest towards  
Making the life worthwhile  
That costs the least and does the most  
Is just a pleasing smile  
The smile that bubbles from the heart  
That loves its fellow men  
Will drive away the clouds and gloom  
And coax the sun again  
There is no room for sadness  
When we see a cheery smile  
It always has the same good luck  
It is never out of style



**The Veterinary Clinic, Whimple**

Consultations by appointment. at various times throughout the day  
We also offer routine surgery and dental treatment.

For an appointment and for all veterinary enquiries,  
please call the surgery on 01404 823230.

**Now open all day!!!!!!!**

**Opening Hours:** Monday and Wednesday: 8.45am - 7.00pm  
Tuesday, Thursday and Friday 8.45am - 5.45pm  
Saturday: 10.30am - 12.00noon

**24 hour emergency service 01404 823230**

**Vale Vets—The Vets Your Pet Would Choose**

*West One*

**Hair Design  
01404 814 913**

**For Ladies and Gentlemen**

**3, The Old Village Hall, West Hill Road, West Hill,  
(Nr West Hill Garage) Free Parking**

Ladies cuts	from £8.00
Men's cuts	from £6.50
Children	from £5.00

Our qualifications include Hairdressing NVQ 1 & 2  
Diplomas in: Toni & Guy advanced Technical Colouring, Colour Correction,  
L'Oreal Colour Keys, Techniques 2000, Cutting and Perming.

**Opening:** Monday, Wednesday, Thursday, Friday & Saturday.

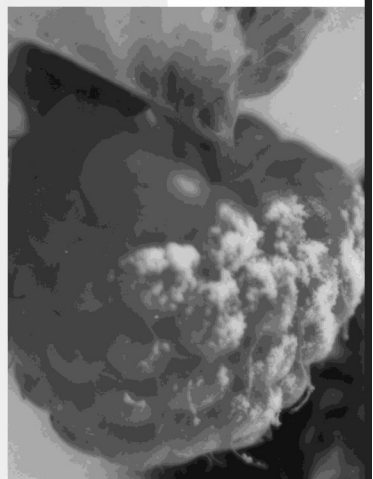
For an Appointment Please call **01404 814913** or Call in for Free Consultation.

# whatever the occasion

The Jack In The Green Inn, one of Devon's finest restaurants, is pleased to support the village Magazine The Whimple News.

Our award winning food is prepared with the finest ingredients by our uncompromising chefs.

So from bar snacks to a la carte our sumptuous meals suit every occasion and celebration.



*...we'd like you to come and see us*

THE JACK IN THE  
GREEN INN

Rockbeare, Near Exeter, Devon EX5 2EE.  
Telephone: 01404 822240 [www.jackinthegreen.uk.com](http://www.jackinthegreen.uk.com)

# WHIMPLE AND DISTRICT VILLAGE PRODUCE ASSOCIATION

Despite the problems that faced some of the exhibitors in some of the classes, the 2007 Annual Flower Show was another resounding success. Although we did not have a record number of exhibits, we did equal our record number of exhibitors with 103 people taking part. This meant we had a very good entry with 601 exhibits on display. It was good to see so many more new exhibitors this year and once again we had some new names to put on the trophies.

The Children's Classes were up to their usual high standard and imagination and it was good to see an increase in the number of exhibits particularly in the Section for the Under Fives where we had 43 exhibits. Winners in these classes were Annabel Courtney who won the Cygnets Cup; Peter Betts who won the Basildon Award; Emily Ackland who won The Fletcher Cup and Kitty Macklin who won The Children's Challenge Cup. The photography section was again keenly contested with some outstanding pictures. It was a challenging task for the judges as there were some 143 exhibits to admire. However, once again it was Gilly Curtis who took the honours in this section winning the Paul Henry G.C. Memorial Cup. In the Arts and Crafts Classes there was another outstanding display of skills. It was Gill Munslow who won the Len Rose memorial Cup in this section with Elisabeth Roberts winning the Whimble Craft Cup.

The regular high standard was once again maintained in the flower arranging with another display of floral artistry. The trophies in this section were won by Doreen Staddon who won the The Sandfords Cup and the Marie Louise Grout Cup for the best exhibit in the Show (which was voted for by everyone who came along to see the show). The Roy Horsburgh Trophy was won by Sylvia Broom.

In the Beer and Wine Classes, Marion Daniels won the Cranny Brook Cup. Although the number of entries was not as high as we would have liked, what was on display was of a very high standard, especially the Sloe Gin!! Perhaps a few more of you could spend winter months wine making? As usual the Homecraft section was full of mouth watering exhibits and congratulations to Margaret Burrough for her skills in winning the trophy in this section. As was the case last year the men did themselves proud in this section with a large entry in the Class for a Victoria Sponge, and they were all edible!!!

The Pot Plant Section had an excellent number of exhibits with 48 plants and flower tubs on display. The winner of the Briar Shield was Doreen Staddon. And finally, but by no means least, there was an exceptionally good entry in the flower and vegetable classes. The appalling weather in the preceding months left us wondering if there would be much for the show. However, we were delighted to see just about every class having quality exhibits. In all there were 172 exhibits in this section which certainly gave the judges a hard task. This was again a very keenly contested section and we had a new winner of The Whimble Folk Cup, this being won by Doreen Staddon.

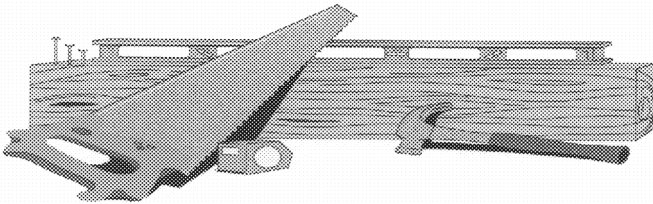
Sue Parkinson, another new cup winner, was the runner up in this section winning the Win and Bob Shepherd Cup, however she had to share this trophy with Gail Ward and Danny Bratt. The Slewtton Cup was also won by Doreen Staddon ( I make that 4 Doreen won - so well done Doreen!!) and The Presidents Cup was won by Sue Parkinson.

We were very pleased to welcome Mrs Maria Wallis to the Flower Show who very kindly presented all the prizes and, on behalf of the Show Committee, Jessica Luck presented bouquets to her and she was also presented with a posy.

All the judges remarked on the high quality of the exhibits in all the classes and they asked that these comments were passed on to all the exhibitors. So well done to all of you who entered and give yourselves a big pat on the back for your efforts!!! In turn, we are extremely grateful to all our judges who give up their time to do this difficult task.

The Committee would like to express their thanks to everyone who helped us set up the Hall for the Show and clear up afterwards. it is very much appreciated. The new arrangements worked very well for the second year and we are very grateful to Angela Banfield for operating the laptop to make sure all the entries went in the right classes and all the results were correctly recorded. For those of you who were entering for the first time we hope you enjoyed the experience and we look forward to seeing you at next year's show. And talking of next year, the Flower Show will be on Saturday 9th August 2008, so start your planning now!!

**Paul Wilson**, Hon. Secretary.



fencing, pergolas, gates, trellis  
and sundecks.

**01404 823002**

free estimates and over 25 years of quality  
workmanship  
also patios, and brickwork.

**P. R.**

**S**

**M**

**I**

**T**

**H**



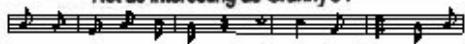
# SLACK-MA GIRDLE

for  
Ceilidhs, parties, weddings,  
Christmas sing-a-longs.  
The local band  
for all occasions



Tel 823083

Not as interesting as Granny's!



*Therapeutic Massage  
Indian Head Massage  
Anti-aging facial treatment  
Free skincare consultation*

*Hopi Ear Candling  
Aloe Vera health drinks,*

*favoured by those with  
IBS, arthritis, skin problems,  
sports people*

*& as a boost to the immune system*

*Call Sally C.H.Ed (Dip Mass, Dip Aroma)*

*CMA Registered*

*Whimpe 822315*



## Heritage Taxis

**At your service  
01404 81 55 44**

## Tom Vanneck

**Furniture Restorer  
&  
French Polisher**

**Modern & antique  
commissions undertaken.**

**Tel. 01392 860502**

**Mob. 07812810846**

# PARKING: PLEASE BE THOUGHTFUL



A major concern raised in the Parish Plan questionnaire was parking. About half the respondents thought there was too much inconsiderate or dangerous parking at a number of places in the village.

The area of greatest concern was The Square, with many people expressing concerns over safety when The Square is too full of vehicles. A number of people also expressed sadness that the look of the centrepiece of our village is being spoiled, especially by long-term parking of commercial vehicles. A further concern was parking in the narrow part of The Square in front of Ivydene, with many people pointing out that emergency vehicles would not be able to pass. The dustbin lorry is sometimes unable to pass - just imagine if this was an ambulance or fire engine! Some also pointed out that cars often block access to the brick footbridge, a unique feature of our village.

Many people also noted that the free Parish Car Park (40 yards from The Square) is hardly used and that use of this car park could alleviate congestion in The Square. If you need to park in the centre of the village, especially for more than a few minutes, we would ask you to please use the car park instead and please do not cause an obstruction to emergency vehicle access.

Other areas of particular concern were - near the school (especially if parking for the Surgery is prevented), the station, and opposite the bottom of Grove Road outside Bridge House. Many other locations were mentioned.

Overall, the message is simple: please be considerate when parking in the village. Even better, why not try walking or cycling?

**Whimpe Parish Council**



# THE PENSION DRAWDOWN COMPANY

## INDEPENDENT FINANCIAL ADVISERS

FOR UNBIASED, QUALITY FINANCIAL ADVICE BASED ON YOUR  
CIRCUMSTANCES PROVIDING SOLUTIONS TO YOUR NEEDS  
INCLUDING

**SAVINGS    INVESTMENTS    PENSION PROVISION**  
**RETIREMENT OPTIONS inc ANNUITIES**  
**LIFE AND CRITICAL ILLNESS COVER    INCOME PROTECTION**

Contact: Bob Diamond at Waterlake Meadow, Church Road, Whimpe  
On 01404 822865 or Email [r.diamond1@ntlworld.com](mailto:r.diamond1@ntlworld.com)  
For a free initial consultation

Appointed Representative of The Burns-Anderson Independent Network PLC,  
which is Authorised and regulated by the Financial Services Authority

# Martha Mockford

## Quality kitchens at affordable prices

*manufactured and expertly fitted by our own staff  
better value for money than DIY stores*

**Also re-fronts & new worktops**  
**Carpets, vinyls and wooden flooring**

Complete, friendly service from a local family business

**Hotpoint, AEG, SMEG, Franke, Blanco**



# 01404 44189





Ed the Ed.

10th August 2007

Sir,

Why in the August/September edition of your otherwise excellent periodical should you descend to gutter journalism? I refer of course to the libelous comments in your editorial on the Over 60's Club.

We, Sir, I'll have you know, are the salt of the earth, the crème de la crème. It is we with our pitiful pensions who keep the economy going. It is we who sacrificially keep the coach companies solvent with our outings. It is not gum we chew in the Square, it is locally-grown carrots. We do not glare at passers-by, as you accuse us, but our looks are benign, signifying our readiness to protect innocent villagers from the attacks of malignant editors.

Who else, do you imagine, Sir, sets the standard of cleanliness and neatness, making Whimble such a model village? Who else slows down the drivers by wobbling uncertainly along the road, at risk to life and limb? Who was it but the Over 60's who saw off Hitler?

We challenge you and your Team, Sir, to a contest. Let you and your Team meet us in a tug- of-war, if you dare. We shall only need to use one hand. Or alternatively we will beat you at Bingo. or Beetle.

When you pass the critical point and mark up your 60th birthday, you will see things differently. Quality of wisdom always excels youthful impertinence.

But I doubt if you will even have the temerity to publish this letter.

Your outraged correspondent,

**Geoff Gardner.**

Chairman, Whimble Over 60's Social Club.

# WHIMPLE

The Perfect Village

“A great community, good amenities and excellent accessibility”



We have a constant stream of enquiries for property of all types in and around Whimple.

**ASK FOR A FREE VALUATION**

01404 814306

[www.redfernsproperty.co.uk](http://www.redfernsproperty.co.uk)

Tim Wright

# Whimple Pre-school



Wow what a fantastic Village day we had! The Dog show was a great success and raised just under £100 everyone said how good it was and we had loads of people coming to watch. The local dog warden came to judge the show. We also had Postman's favourite which Paul Carpenter kindly judged for us, I think everyone had a great time so thank you for supporting us once again.

Well what can I say about the Auction of promises, again a fantastic event! We raised in the region of £1700 which was much more than I could have ever hoped for. The Auctioneer David was fantastic and certainly got everyone to spend their money, I think everyone who came enjoyed themselves and got into the flow of the night. I would like to thank everyone who donated whether big or small without your donations it would not have been possible to raise that amount of money. The money will go to upgrading the Pre-school toys.

I think this will be my last entry in the Whimple News as I am giving up my position of chair person in October as my youngest son will be going to school in September. After 4 years I feel that the Pre-school could do with some new blood as I think they have seen quite enough of me!! It has been very rewarding but also very hard work at times but I feel I have made a small contribution to a very valued part of our community. I would like to take this opportunity to thank the committee old and new for their support over the last four years and to the staff who have always been very supportive to me and everyone who has picked me up when I have been ready to throw in the towel.

I would also like to thank all the local businesses who continue to support all our fundraising events, The Village Shop, The Post Office, Vale Veterinary, Milestone Services, The Thirsty Farmer, The Fountain Inn, Halo's, O'Hanlons.

You have all been great so thank you. Well I will stop twittering now and let you get on with reading the rest of the News.

**Sally Young**

## Fireworks Night

Just a reminder that Fireworks Night at the Cricket Club will be on 3rd November with bar opening at 6.00pm with a children's raffle being conducted up till 7.00pm or until sold out and fireworks beginning at 7.15pm weather permitting. no entrance fee but all donations greatly appreciated.

Chris and Chips will be there as usual

# DC DECKING & JOINERY

*Quality Carpentry Services*

## BESPOKE HAND CRAFTED GATES

- *FREE ESTIMATES*
- *MANY REDWOOD DESIGNS*
- *SUPPLY & INSTALLATION*
- *TOTAL SECURITY*

## CARPENTRY

- *FREE ESTIMATES*
- *KITCHENS & BEDROOMS*
- *BUILT IN WARDROBES*
- *UPVC INSTALLATIONS*

*Many years experience,*

*Fully Qualified*

*Large Portfolio*

## QUALITY DECKING SERVICES

- *FREE DESIGN & PLANNING*
- *QUALIFIED INSTALLERS*
- *TREATED MATERIALS*

## JOINERY

- *HAND MADE GARDEN FURNITURE*
- *ANYTHING THAT NEEDS TO BE MADE OR REPAIRED*

*For a friendly, efficient & professional service please contact our team*

*Telephone : 01404 822126    Mobile: 07980 889968    Email: dcd decking@aol.com*

# Community Transport in the Whimple area.

There are a wide range of services available to people living in the parishes surrounding Honiton and in East Devon, there is also some confusion as to who can take advantage of these services. A lot of people believe that you have to be elderly or disabled to use community transport, this is no longer the case. Though these services were originally established to serve the older generation, legislation has changed and anyone living in a rural area without public transport and who cannot access a car can simply give us a call and request transport which we will do our best to supply. The services available include:

**The Ring & Ride** - a fully accessible minibus providing a door to door service into Honiton, operating in your area on Monday, the driver will usually collect you from your home and will help with carrying the shopping to your door. The return journey currently costs £3.00. There are also occasional trips to other destinations available at weekends, details of these are available from the TRIP office.

**Honiton Voluntary Car Service** - this is for elderly or frail people who need to attend medical appointments either in Honiton, Exeter or elsewhere and is provided by local volunteers and coordinated through the TRIP office. It is run on a non profit basis and new volunteer drivers are always welcome, mileage costs are reimbursed.

**The Blue Bus** - our disabled accessible vehicle, providing transport to day-care or medical appointments for those people who cannot travel in a car or are wheelchair users. This can regularly be seen in and around East Devon.

We also can hire our fully accessible Ring & Ride minibus and Blue Bus out to eligible groups.

Public transport information- we keep a stock of local bus and rail timetables and also application forms for the free bus pass.

For more information on these services please contact- Neil Hurlock at TRIP Community Transport of 29-31 New Street Honiton EX14 1HG or phone 01404 46529



## **CRAFT FAYRE**

**Saturday 24th November**

in the Victory Hall, doors open 1.00pm - 4.00pm.

Free admission. Refreshments available.

A range of contemporary ideas for xmas gifts.

Organised by Whimple Primary PTFA

\*\*\*\* Hello from the 'Night Man at the Crossing' / the 'short round bloke who still delivers phone books' \*\*\*\*

It seems a long while since I last inserted a ditty or two. Well, what seems to have become our family tradition of delivering your phonebooks is well underway as I speak. Yellow Pages to follow folks with a Thompson book in October if you are lucky (or not so!). What worries me is the years flying by and it not seeming like I was around 5 minutes ago with the 2006 books. The only thing I miss now is not having a pram or buggy to push books around *at the moment*, and having to carry them further! It doesn't seem 4 years ago our daughter Emily was momentarily buried in Ikea magazines whilst sleeping innocently on one side of the double buggy, with books piled high in the other seat! Graham our eldest son, also suffered a similar scenario when we had to apply the emergency brake on the Vauxhall Viva HC whilst wurdelling our trade thru' the wilds of Rewe & Turkey Lane (there's one for the pub quiz in the Geography section!), and at the age of two thought the whole world had turned yellow!

Alas now aged 6 & 5 respectively they were none the worse for their white knuckle rides with father at the helm and now have a large stake (and say!) in the forever expanding "SPRY, Sons & Daughter Ltd". Peckham has to be the next feat for us - though if they think I'm delivering YP's to the high-rise flats they can all think again!

The holidays seem to be fast approaching the end now and I'm sure like most other families so is the bank balance, or overdraft after the 'fitting' exercise in Clarks/ Startrites but its worth it in the end. I remember a family saying passed down to me which goes - "without good boots on your feet you'll never be able to work - Look after your feet and they will earn you money ". I've never known any other part of my body earn me money so it must be true!

On the "Scout Group" front we are reaching full capacity in both sections (25 each section), not bad going as there are only 4 warranted leaders and 4/5 regular helpers. We welcome Joan Bellamy as a new warranted Cub Leader. Joan has been helping Elaine for at least 4 years I can count and has now agreed to take up a uniformed position within our growing group. Our continuing thanks must go to Elaine who now seems likely to stay on "for more" and my long suffering wife, Shelley, who with her constant support, fresh ideas and tolerance runs the Beaver Colony along with myself, both of whom have now exceeded and gained their 5 year service awards.

We have a Dad of a cub who is willing to re open the Scout section (10-15's) as a uniformed leader, albeit we need a couple more keen adults to assist him as the programme is more adventure-based and takes youngsters outside the confines of "the hut". This will be a big step in the right direction for our group particularly as we were 100 years old in August. The Scout Section will start small and only take Cubs from our pack initially who have turned 11 years. This will give it chance to gain its strength back and assist those involved in running it. Give us a shout if you are interested. It will be fun and hard work at times but from my experience very rewarding.

Akela Elaine, Jane our secretary, Cameron her son (a Whimble Cub Scout), and myself along with 50 Scouters & young people travelled from Honiton to visit the 21st World Jamboree in Hylands Park, Essex for a day. It is when you attend these sorts of events that you begin to realise how important Scouting in the UK is to the youngsters & teenagers of today - as it was 80/90 years ago.

Alas enough of me gibbering, must wash me mug out and be ready for the up "Night Sleeper" followed at 0250 by the down "Night Riviera".

One last closing thought - when was the start of Summer in Whimble & Talaton this year and when will be the end? Many people have commented on no sightings of 'the knees' to date this year so here you go -

Well just to let you know officially I first showed "the knees" publicly for all to see on Sunday 26th August at Honiton Hill Rally (and even that was doubtful at first!). They were still on show for the whole of Bank Holiday Monday whilst undertaking phone book distribution, until they recommenced Night Turn at 2200, whereby the aforementioned "knees" were re-hidden due to a significant drop in temperature. Lets hope "the knees" will be out & about a bit more before the 'fall'!

This must be the latest date ever recorded.

It was recorded in 1998 that the "knees" first outing for that year was Valentines Day (14th Feb), thus making it the earliest since records began.

Alex Spry

HDR

## Records & Pop Memorabilia Wanted

Good prices paid for the following

**Records. CD's, Rock & concert Memorabilia**

**Tour Programmes/ Old Tickets/ Magazines/ Sheet Music**



All types of music, large or small collections

Rock - Pop - 50's - 60's - 70's - Punk - 80's

John W Griffiths

Phone: 01404 823480

Mobile: 07836 369740

Email: [hdicksrecords@yahoo.co.uk](mailto:hdicksrecords@yahoo.co.uk)



# ★ DRAIN-WIZARD

Pitch Fibre Specialists  
Drainage & Light Plumbing Services

**24 Hour Emergency Service**

Blockages, Jetting, CCTV, Repairs, Lining,  
Renewals, Septic Tank & Soakaway  
Problems, Toilets, Ball Valve & Leaks

Tel: Whimble (01404) 822913

Mobile: 07815 064669



## Berry Farm



Apple juice, Cider, Eggs, Pork,  
Fruit & Vegetables

Please call Jenny on 01404 823930

Or visit us in Clyst St Lawrence





**Ford Simey**  
Solicitors

**Make a Will**  
**and we will donate half our costs to your**  
**Church or a charity of your choice**

**For a straightforward Will we charge £80 and for husbands**  
**and wives "Mirror Wills" we charge £100 plus VAT.**

**We will donate £40 and £50 respectively**

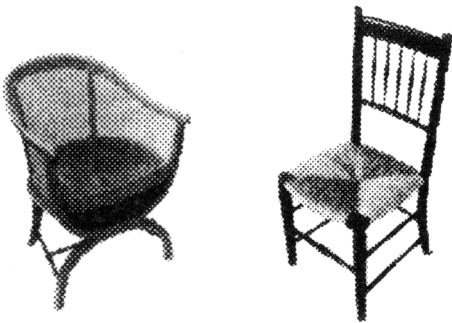
**For full details call**

**Victor Donson on 01392 274126**

**8 Cathedral Close, Exeter EX1 1EW**

**[www.fordsimey.co.uk](http://www.fordsimey.co.uk)**

**CHAIR CANING**  
**RUSH SEATING**  
**SKEINED WILLOW**



**Tel: 01404 822422**

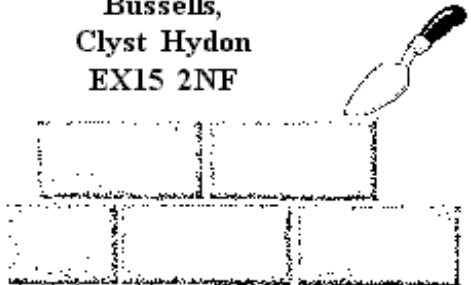
Higher  
Slewton  
Whimple

**Rosemarie Burrows**

**TWW BUILDING**  
**SERVICES**

**EXTENSIONS, PATIOS, PONDS,**  
**STONEWALLS, FIREPLACES**  
**PAINING ETC.**

**Bussells,**  
**Clyst Hydon**  
**EX15 2NF**



**Tel: 07749 715187**



# Whimple Primary School

Parents, Teachers & Friends Association

Firstly we would like to extend a warm welcome to our new Headteacher, Mrs Susie Langley.

Thank you to everyone who has contributed to our school in the past school year by buying raffle tickets, coming to events or helping - it has been a hectic year!

Everyone in the school has benefited from PTFA support this year including the following:-

M&M production, Theatre Alibi, IPS production, Bigfoot Theatre, Concert by the English Touring Opera, Pantomime, Adventure Challenge, Playground activities and Christmas crackers, Education City software, Leavers gifts, craft club materials, sandpit/ water trays, school trips and school end of term BBQ.

## Dates for your diary:

**Reception and Year 1 cake stall - Friday 19th October 3.30pm in school playground**

**Craft Fayre Saturday 24th November in the Victory Hall from 1.00pm to 4.00pm , if you are interested in having a stall please contact Sally Young on 01404 823228**

**School Christmas Fayre on Monday 17th Dec in the Victory Hall from 2.00pm to 3.20pm**

**Christmas Disco for Whimple Primary children on Friday 21st Dec - venue to be arranged**

Would you like to be part of a new organisation in Whimple? We think there are a lot of practical ways to reduce our impact on the environment and improve the village we live in and our own lives. We would be interested in being part of a group of people who are interested in the things we can do to minimise waste, improve our energy efficiency and generally consider the things we can do to live our lives with more consideration to the world as a whole. If you are interested in reducing your carbon footprint or simply investigating if it is possible to improve village recycling facilities, car sharing schemes or other things we can all do to make a difference, please contact:

Alison Betts 823967 or

Jenny Sanders 823015 or e-mail to [barnum.sanders@virgin.net](mailto:barnum.sanders@virgin.net)

# **BARRY SEAFORTH DECORATING SERVICES**

Est 1979



PAINTING WALLPAPERING  
SPECIALIST FINISHES MURALS TILING  
COVING CARPENTRY ALTERATIONS  
REFERENCES AVAILABLE

Call Barry 01395 513729  
Free Estimates



Little Cot  
Hembury Fort  
Honiton  
Devon  
EX14 3LE

Tel  
01404 841699  
Mobile  
07976725516

## **M P SMALL ENGINES** Mike Persey

**SERVICE & REPAIR TO**

**All makes and types of  
Horticultural / Garden  
Forestry and Small Agricultural  
Machinery**

**Specialist in the repair of older  
Machinery and Sports Club machinery**

**Makeovers and rebuilds undertaken**

**New machinery at competitive prices**

**Collection Service**



## WHIMPLE CHURCH



Autumn is upon us and on 23rd September we celebrated God's generous provision at our **Harvest Service**. Our gifts in Whimple have been sent again this year to St Petrocks, an Exeter based charity which aims to support and help the homeless.

Following the recent **re-surfacing of the churchyard path** and creation of a ramp at the West door, St Mary's is now more easily accessible to buggy and wheelchair users—do come and try out the new facility! Our next job is the re-coping of the boundary wall adjacent to the Square with Killerton stone, for which we have now received local authority approval.

A new **Christianity Explored** course will be starting on Wednesday 10th October, 7.30pm at the Rectory. This is an informal course for anyone who would like to investigate

CHRISTIANITY  
EXPLORED

Christianity, or just brush up on the basics. It explores who Jesus is and what it means to follow him. You would not be asked to pray, sing, or read aloud, and you can ask any question you like. Or, if you prefer, you can come along and simply listen. Please contact Rob Wilkinson (822521/robwilkinson@lineone.net) for more information.

Following on from the success of last year's **Traidcraft Evening**, we will be holding a similar event in mid-November with free-trade wine and chocolate tasting, ideas for Christmas presents and cards. Look out for the posters.

**Trick or Treat?** On 31st October many in our village will be carving out pumpkin lamps, dressing up in pointed hats and black gowns and going from house to house for some trick and treating revelry. For most people, Halloween these days is just a bit of light-hearted fun, and few think about



or are concerned about the darkness that underlies Halloween traditions. As Christians we believe that Jesus destroyed the power of death when He went to the cross, and that anyone who trusts in Jesus doesn't need to fear evil, nor should they celebrate it.

This year on Tuesday 31st October SClub11, the children's group at Whimple Church is holding a **Light Party** for primary-aged children, to celebrate the light of Christ and offer an alternative fun party on 31st October. Please contact Maggie Spicer (823640) for further details.

**It's shoe box time again!** Whimple Church is participating again this year in Operation Christmas Child - packing up shoe boxes with children's toys for needy children. For many of



these children, the shoe box is the first Christmas present they have ever received. The shoe boxes are given unconditionally, regardless of nationality, political background or religious beliefs. Last year 1.247 million children in Eastern Europe, the former Soviet Union and Africa received shoe boxes from children, families and individuals in the UK. To contribute a box this year, please contact Maggie Spicer (823201) or visit [www.samaritanspurse.uk.com](http://www.samaritanspurse.uk.com) for more information. There is a flier with full of ideas of what to buy - plus a label to stick on the front of your box. Why not bring your wrapped and filled shoe box to our Celebration Service on 4th November when we will be showing a DVD about the work of Operation Christmas Child?

**Christmas Services.** Christmas will be upon us before we know it. Please contact Gerri Turner (822587) if you would like to sing in the choir at the Advent and/or Christmas carol services.

Our special Christmas services in Whimple this year will be as follows:

- Sunday 2nd December, 6.30pm Advent Carol Service
- Sunday 9th December, 3.00pm Christingle Service
- Sunday 16th December, 11.00am Christmas Celebration Service
- Sunday 23rd December, 6.30pm Carol Service
- Monday 24th December, 11.30pm Midnight Communion
- Tuesday 25th December, 11.00am Christmas Day Service

We do hope that you will be able to join us at one or more of these services, or indeed on any Sunday, when you will find a warm welcome.

Revd. Rob Wilkinson can be contacted on tel: 822521.

# PETER COSSLETT

**CARPENTER AND BUILDER  
QUALITY WORKMANSHIP**

**KITCHEN FITTING**

**DOORS AND WINDOWS**

**TIMBER CONSERVATORIES**

**EXTENSIONS AND MINOR**

**BUILDING WORKS**

**COMPETITIVE PRICES**

**&**

**FRIENDLY SERVICE**

**Tel: Whimble (01404)823279**

**Mobile: 07768 436042**

# S.H.DANIEL

**ELECTRICAL CONTRACTOR**

**CROCKERNHAYES**

**WHIMPLE**

*PRIVATE ADDRESS*

Malham House

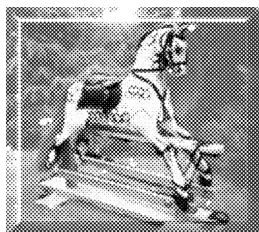
Awliscombe

Devon



# BANFIELDS

*Traditionally carved rocking  
Horses & Restoration*



18 Rectory Close, Whimble,  
Devon EX5 2UF

Tel 822162

E-mail Banfieldgew@msn.com

# D. GARLAND

**Specialist in  
Built in Furniture,  
Carpentry and  
Joinery**

# DG

**10 Elliot Close  
Ottery St Mary  
Devon**

**EX11 1GZ**

**Tel: 01404 811465**



## Longfield Cattery

heated single and double chalets  
personal care and attention



(now also looking after small animals)

01404 822275

Longfield ~ Church Road ~ Whimble ~ Exeter ~ EX5 2TF

*"Learn a life skill with a Professional"*



# J.C.Ball



**Driving Standards Agency Approved Driving Instructor**

- FREE:- First hour for beginners
- FREE:- Loan of Videos and Books
- FREE:- Pickup in Exeter & East Devon

2 Manley Close  
Whimble  
Devon  
EX5 2UG  
(01404) 822764

*Refresher and Motorway Lessons*

*"Safe driving for life"*

# From Whimpe to VW Heaven and back

As some of you know, I have an old 1973 VW CabrioBeetle in a pretty bright blue colour. Of course, everyone asks if it has a name, and I really don't have one for it - although I do know it's a boy. On the whole, I call it 'darling' or 'baby', as in "you know you can get up that hill, darling", or "please get your brakes to engage before we hit that lorry, baby". If pushed, though, I will admit to sometimes thinking of it as 'Joey', because it's a lovely shade of budgerigar blue.

Earlier in the year 'Joey' and I set off on a marathon trip back to the very spot where he was born - in the Karmann factory at Osnabrück. It was the first time he had left England even, let alone get on a ferry and cope with the Autobahns, so I was a bit concerned, to say the least.

Having spent an arm and a leg on a full service, and with my good friend Elaine for company, we took on the M25 at rush hour, and made it to Dover, where we met the other 6 Cabrio's travelling from England.

We went via Dunkirk and onwards past lorry after lorry to our overnight stop in Eindhoven, then eventually to Melle, where the cars from all over Europe were meeting for the weekend. It was actually organised by the Dutch VW Cabrio Owners Club, and we watched in awe as 72 original cars all rolled up, along with 4 Karmann Ghia's.



This will never show in the black and white picture, but no two cars were identical. The Cabrio model was built with slight differences for particular markets (e.g Italian spec and American spec), so there are lots of variations. Mine was originally in Italy, so had a lovely 'cigarette-smoke' yellow hood lining when I got it.

The next morning we set off to the 'spanning ground' of the Karmann factory and it brought a tear to the eye taking the car through the gates. All the workers came out into the sunshine to applaud - it was quite a sight.

Back at the hotel, the Dutch presented their plans for the rest of the weekend, with lots of trips and entertainment - including a free bar at the hotel, unfortunately - and we had a brilliant time.

The only downside was a very bizarre mine tour, which was very long and freezing - and all in





German, which even the Dutch couldn't follow. Luckily, halfway round I spotted a chink of light, so six of us did a 'Great Escape' before our feet froze off completely and we waited in the hot sun until the others emerged (not too happy) an hour later!

We set off home on the Monday, stopping in Gent on the way back, which was very pretty – then the long haul back to Devon.

Poor Joey didn't quite make it back in one piece, as the relay went on the front headlights. I think he had just had enough, though, really.

So I headed for Winchester and persuaded the lovely RAC to pay for a hotel for the night, with a nice, warm garage for the car – and then tootled back in the morning.

Another arm and a leg for a mobile guy to fix the lights followed – although a bonus was him finding the 'lost' wiring to my reversing lights, which I had never found before – so now you can safely see my rear end when I'm backing out around the village, I'm pleased to say.

Sally Wilde



## Whimble Victory Hall

### *Soup and Sarnie Lunch*



*12.00noon until 1.30pm  
on Saturday 20th October  
and Saturday 17th November*



*Come and Join us*

# MILESTONE SERVICES

TEXACO GARAGE WHIMPLE

Welcome to



-o-

GROCERIES - FROZEN AND CHILLED FOODS - FRUIT AND VEGETABLES  
WINES BEERS SPIRITS- FRESH BAKED BREAD - HOT SNACKS AND DRINKS  
NEWSPAPERS - MAGAZINES & MUCH, MUCH MORE

-o-

**LOOK OUT FOR OUR MONTHLY SPECIALS -SELECTED LINES AT  
SUPERMARKET PRICES! (EG. 3 BOTTLES OF WINE FOR £10 )**

-o-

**JOIN OUR DVD CLUB**

(MEMBERSHIP FREE) RENTALS FROM 99P

-o-

**PAYPOINT AGENT**

PAY YOUR BILLS - TOP UP YOUR MOBILE - TV LICENCE  
ELECTRICITY KEY CHARGING ETC

-o-

**CASH MACHINE IN STORE**

-o-

WE ALSO SELL CALOR GAS - COAL - LOGS - CAR CARE PRODUCTS -  
GARDEN STONWARE & COMPOSTS.

**FUELS AND OILS AT COMPETITIVE PRICES**

-o-

**LONDIS at Milestone - Best Value Locally**

-o-

**OPEN UNTIL 10.00PM (8.00PM on Sundays)**

Telephone (01404) 822454



# PERKINS PEST CONTROL

**DO YOU HAVE PROBLEMS WITH:**

- RATS & MICE • MOLES • WASPS • FLEAS
- COCKROACHES • BIRDS ETC?

**WHAT WE CAN OFFER ...**

- RAT & MICE CONTROL • MOLE CATCHING
- WASP NEST REMOVAL • FLEA TREATMENT,
- FLY CONTROL and much more ...

**Perkins Pet & Country Store**

Unit 17, Finnimore Trading Estate, Ottery St. Mary,  
Devon EX11 1NR

- Tel: 01404 812605
- Mobile: 07738 899113
- Fax: 01404 815300
- e-mail: fwperkins@eclipse.co.uk
- Visit our website at:  
www.perkins-pest-control.com



## Pet or Pest?

Twenty five years ago the Perkins family started a country store on the Finnimore Trading Estate in Ottery St Mary, retailing all products connected with a 'rural lifestyle'.



Their range of products is quite remarkable, catering for virtually all pets, including a pets' corner with birds and rabbits etc to a wide range of outdoor clothing and shoes and have recently added the Hulabaloo beachwear collection to their eclectic mix.

In May 2006 Perkins' Pest Control was launched, offering control of wasps, moles, rodents and many other pests across the whole of East Devon for both private and business customers.

This much sought after service has proven to be quite ironic as one customer's pet can be another's pest!! For example Perkins sell Reggie Rat food for pet rats, whilst also on sale is the more 'toxic' rat food for the less domesticated variety. Managing Director Marc Perkins says '...here at Perkins, it's all about customer satisfaction, whether that's friend or foe in the form of pet or pest or simply fun and fashion, we cater for all...'



Take a visit to Perkins, you'll be pleasantly surprised!



This little piggy went to market...



this little piggy stayed home...  
and ordered everything online from  
Own!



For food that's  
Local, fresh, convenient, delivered.

**www.ownonline.co.uk**  
or contact Dave, Keith or Sue on 01392 832000



# Compassworks

MOOR THAN NAVIGATION

## WOULD YOU LIKE TO:

**Learn to map read / develop existing skills?**

**Learn by practical experience?**

**Learn from specialists in a friendly atmosphere?**

**Know more about GPS and Navigational Software?**

**Find out what else COMPASSWORKS has to offer?**

**Tel: (01566) 783236 / 07711 055961**

**[www.compassworks.co.uk](http://www.compassworks.co.uk)**

For all your daily requirements  
of  
MILK, CREAM, EGGS, FRUIT JUICE,  
NEWSPAPERS & MAGAZINES  
POTATOES, FRUIT & VEGETABLES  
PET FOODS & REQUIREMENTS  
AVAILABLE AT COMPETITIVE RATES

Delivered to your door

Please contact

VICTOR AND MARIAN DANIEL

Summerbridge, Whimble, Devon

Tel: Whimble 822458



# Whimble girls run for it!



Today, the 30th September, Nikki Harris and I, along with sterling back-up from the rest of the Harris family, set off to Powderham Castle to attempt the 10k Cancer Research run. It was Nikki's very first race, and I had only just about managed the 5k round the Hoe earlier in the year for the same cause, so we had spent many a happy hour huffing and puffing around the lanes of Whimble for our 'training sessions'. The fact that one of these training runs was to Escot for a cup of tea and a huge slice of fruit cake, and another was a desperate dash from Exeter Quay to get a beer in the Turf Locks, was irrelevant in our minds.

With no fatty treat or alcohol promised at the end of the actual race, it was a lot harder to keep going, but we managed to get around, and felt a huge sense of achievement.

Way ahead of us in the pack were Vicky, Ali, Sally and Jo from the Village, so Whimble was well-represented at the front, and we happily brought up the rear.

Many thanks to everyone who supported us with sponsorship – I think Nikki and I managed to raise nearly £700 between us. It's such an important cause, so well worth the effort (and we lost a few pounds!!).

Sally Wilde



# *Simon Turner*

## *Independent Financial Consultants*

Penraddon

Hand & Pen

Whimple

EX5 2PX

For

**Independent Advice**

on Pensions

Mortgages

Investments

Life Assurance

Inheritance Tax Planning

Tel : **01404 822587**

For free initial consultation



*Simon Turner Independent Financial Consultants is an Appointed Representative of LighthouseXpress Limited which is authorised and regulated by the Financial Services Authority*

# Success story for local Police Community Support Officer

We like success stories, and so when this article was offered for inclusion in the Whimble News, we thought that our readers would be interested. It was offered to us by a concerned resident (name supplied) of Slewton Crescent who found some boys throwing things at each other in a communal green space – and was shocked to find that the ‘things’ were plastics bags used for dog’s mess that they had taken out of the special dog bin close by. The resident asked them to stop, and replace the bags into the bin. Apparently, one boy did so.

The scene was repeated some days later, but this time those responsible were long gone and the resident collected up the bags and placed them back in the bin. There were a number of options open as to what to do next – one was to speak to the Neighbourhood Watch Rep who suggested contacting Jim Tyrrell as the local beat manager. Jim was away on leave and then on a course, but Jo Carter, a PCSO came over to investigate and interviewed the resident.

The next day, Jo came back with a bright laminated poster of the ‘bag it and bin it’ style, highlighting the health risks from dog mess, which was placed on the dog bin, hoping that the message would dissuade anyone else from treating the contents as playthings. Since then, there have not been any more incidents, so thanks to Jo Carter for helping resolve the problem.

I am sure that this is an isolated incident, but it is pleasing to see the support from the police to nip things like this in the bud.

**Ed the Ed**



A polite plea to all dog owners & dog walkers in Whimble. **Please, please** clean up after your dog! Please use the dog poo bins provided or when you have bagged it, take it home and bin it. **Please, please** don't leave it on the pavements and roads of Whimble for someone to stand in it!

**Thank you**

## **Out with the Poop & in with the Scoop**

Ooh not again, it's dog poo!  
On my child's left school shoe.

To scoop the poo would only take a jiffy,  
But instead my child's school shoe is wiffy!

If only the guilty few would bag and bin it,  
Then Whimble's villagers old and young wouldn't stand in it!

Please clean up after your doggie best friend,  
And bring this messy problem in Whimble to an end!!

**FOR ALL YOUR  
SEWING REPAIRS**

**&  
ALTERATIONS**

No job too small

Also dressmaking, table linen  
& Personalised machine  
embroidery



Call Molly on

Office. Tel 01392 460970

or 07748 985830 evenings,  
Wednesdays or Sundays.

14 Bramley Avenue, Off Lower  
Hill Barton, near to the Met  
Office

**CPM Plumbing & Heating**



205961

Your Local  
Plumbing  
& Heating Service



Registered  
Business

Repair & Servicing of Oil Gas & LPG  
Heating Systems Boilers & Appliances

Using Hi-Tech Analysing equipment

Fully Insured - All work guaranteed

No Job Too Small - Free Estimates

CORGI & OFTEC Registered for all appliances

For a friendly professional service call:

**Gary Clarke**

Phone: 01404 822523 Mob: 07812013434  
Garlands, 3 Dince Hill Close, Whimble

**MASSAGE**  
in Whimble

FOOT MASSAGE

HEAD MASSAGE

BODY MASSAGE

(Half- or one-hour sessions)

Book your appointment with Lucy Ambler, Dip APNT

on 07808-720577



# Hospiscare



Coffee Morning  
and  
Christmas Card Sale  
Saturday 13th October  
10.00am to 12.00 noon  
in Whimple Victory Hall



JOIN US AT

## ***ANDY'S RESTAURANT***

PART OF THE INTERNATIONAL SWIMMING SCHOOL, STRAIGHTWAY HEAD, WHIMPLE

A LA CARTE MENU

BAR SNACKS

PARTIES CATERED FOR (UP TO 30 PEOPLE) - CREATE YOUR OWN MENU

SUNDAY LUNCHES

CHRISTMAS PARTIES

BOOKING ESSENTIAL!

*ALSO ASK ABOUT OUR WIDE RANGE OF ACTIVITIES INCLUDING:*

*ADULT SWIMMING LESSONS, AQUAFIT*

*CHILDREN'S SWIMMING LESSONS, MOTHER & TODDLER SESSIONS, CHILDREN'S PARTIES*

*SAUNA, SOLARIUM*

*AND NOT FORGETTING OUR 'NATURE'S WAY' BEAUTY CLINIC WITH A FULL RANGE OF TREATMENTS INCLUDING MESSAGES, WAXING, AROMATHERAPY, FACIALS, MANICURES ETC.*

TELEPHONE NOW ON: **01404 822196**

OR CALL IN AND HAVE A LOOK ROUND!

# COLERIDGE MEDICAL CENTRE NEWS

## STOP PRESS.....

### WHIMPLE BRANCH SURGERY OPENING TIMES ARE CHANGING.

From 1st October Whimble surgery will be open by appointment to all of our patients. A doctor and nurse will each run a clinic on Monday, Wednesday and Friday mornings from 09:30 to 11:30am. The afternoon clinics will cease.

We ask patients not to use branch surgery appointments just to order repeat prescriptions. If you require a repeat prescription please telephone the chemist, complete a form at the surgery or use our online ordering service. Our email address has changed to coleridgemedicalcentre@nhs.net Our web site address remains as www.coleridgemedicalcentre.co.uk Please update your address book as our old email address will soon be deactivated.

### Same Day Appointments

Many patients request urgent same day appointments with the doctor at Ottery St Mary. We are trying out a new system of triage, currently being used in other practices. On Wednesdays only, when all our appointment slots are full and you require an urgent appointment, the duty doctor will telephone you to discuss your problem and find an appropriate solution. This could be instructing you to collect a prescription or asking you to consult with the nurse on call or booking you in to see the doctor on call. We would welcome any feedback from patients who have used this new service.

### Missed Appointments

We are very concerned at the number of appointments missed. During August 29 hours (144 appointments) were lost due to missed appointments. Our doctors will be proactive over the coming months in trying to reduce this number. Please telephone the surgery in good time if you are unable to attend your appointment.

### Facilities at Coleridge Medical Centre

Our telephone service has improved greatly since the installation of our new system. We hope you have noticed the difference. We can analyse our call volume and provide more receptionists where required. During June, our receptionists answered on average 2,000 calls per week and answered each call on average within 33 seconds. Our busy times are mornings between 08:30 and 10:30. Please postpone non urgent calls until later in the day.

Thank you to all our patients who have put suggestions in the box at reception. We have implemented some of the suggestions including a calendar on the prescription desk.

Many patients ask for a water fountain in the waiting area and we would like to remind patients if you need a drink of water, please ask at reception. We would also like to remind all our patients that the high back chairs are for those patients who find it difficult or uncomfortable to sit in the low back chairs.

During the next few weeks we hope that our contractors will be able to lay tactile paving to the front entrance. In addition our letter box will be moved to a more accessible location. We are waiting for a dry weekend in which to carry out the work!

Those patients who have visited the surgery recently will notice that our fish have a new home. We hope our younger patients will be able to see our fish more easily.

We recently purchased a number of books for the children's area. Unfortunately they have all gone missing. The books are stamped with our name and address and we would be very pleased to see them returned. Please ensure any books and toys are returned to the children's area before you leave the surgery.

We do value your comments and suggestions and welcome any feedback about your experience when you visit the surgery.



SOLICITORS

**The Complete Legal Service for  
families, individuals and businesses  
throughout East Devon**

**We will visit you at your home if you wish**

For further information and to arrange a  
free initial consultation please telephone

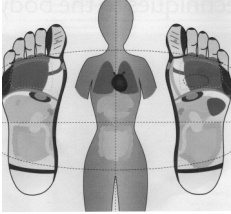
**813446 (Ottery)  
or 41221 (Honiton)  
or David Smith on 822123**

## Friends, Devonians And Whimbletons – Lend Me Your Feet!

...Not permanently, you understand, just for an hour every so often.

Why? - Because I'd like to introduce you to a wonderfully relaxing and balancing type of complementary therapy – **REFLEXOLOGY**.

Helping the body by massaging and touching the feet is a very ancient form of treatment, used over thousands of years in many different parts of the world. Reflexology as we know it today developed from these practices.



The basis of the therapy is that your feet (and hands) are a map to your whole body. Specific points (*reflexes*) correspond to each of the major organs and other structures within the body. Working over the different areas, using gentle pressures of fingers and thumbs, helps to balance the energy flows within your body. Reflexology can be particularly beneficial in the treatment of stress-related symptoms and hormonal imbalances. Therefore, could be worth trying if you find it difficult to relax, suffer from insomnia, irritable bowel syndrome, premenstrual or menopausal discomfort or are going through a particularly stressful time. As with other complementary therapies (such as massage), the improved relaxation and increased circulation resulting from reflexology treatment can also be of benefit to those who suffer from circulatory, digestive or respiratory problems. For some people, its overall balancing effect may even help to combat the cravings experienced when giving up smoking or cutting down on alcohol. Another good thing about this type of treatment is that all you need to remove is your footwear! No need to worry about ticklish feet ... as most people find that the slow, firm pressures are not a problem and, in fact, are soothing rather than upsetting....and don't think that your feet are too awful to expose! Almost everyone I see apologises for the state of their feet, but when you think about how much they have to put up with over the years, a few lumps and bumps and bits of dry skin are not surprising!

So what happens during a treatment? Your first session will start with a confidential chat about your health. Next, I will examine your feet to check that there are no contra-indications to treatment and also to see if your feet can tell me any more about your health. You'd be surprised at what your feet can hold clues to! During treatment, you may feel sensations that you are not used to, which is not unusual and I will talk about this with you as we go along. On completion we will discuss how you feel and whether further sessions might be helpful. Most people find that it takes three or four sessions before they see significant changes – particularly with long-standing issues.

If you would like to know more or have a confidential chat about whether this might be helpful for you, please feel free to contact me. I look forward to sharing with you my passion for this wonderful therapy.

**Ali Thomas**

**Tel.: 823797 or 07812-575028**

# EXETER CARAVAN CENTRE

For Sale - pre-owned caravans  
also caravans sold on owners behalf.  
Caravans always bought and sold.

01404 822116

or

07985 179399

London Road, Whimple



## SOFT FURNISHINGS & TRADITIONAL UPHOLSTERY

Loose Covers to Recovers  
Cushions to Footstools  
Headboards to Bedding  
Curtains—Blinds—Pelmets  
Swags & Tails  
And much more

Jo Harris 01884 277519

## CAPITAL & CITY TAXIS

**01392 433 433**

**FOR ALL YOUR  
AIRPORTS,  
SEAPORTS & EXETER  
STATIONS**



Reg no: 4094



# O'DELL PLUMBING & HEATING

Tel: 01404 811773 Mobile: 07974 818833

FOR ALL TYPES OF GAS AND OIL HEATING INSTALLATIONS.

BOILER SERVICE, REPAIR & BREAKDOWNS.

BATHROOMS & SHOWERS.

UNVENTED HOT WATER SYSTEMS

**Garden Design and Construction**  
from a single border to a total make-over

**A PROFESSIONAL SERVICE WITH EXPERT  
PLANT ADVICE - FREE CONSULTATION**



# Golden Leaf

Landscapes

**Louise Turner N.D. Hort**  
**Robert Mogridge R.H.S. Cert Hort**  
Tel 01392499074 Mob 07811781137  
e-mail: [info@gardenlandscapes.co.uk](mailto:info@gardenlandscapes.co.uk)  
[www.gardenlandscapes.co.uk](http://www.gardenlandscapes.co.uk)

# Whimble History Society



The Cider with Roadies event which took place at the Heritage Centre was a great success. The weather was very kind with warm sunshine bringing out the visitors with their buckets and wheelbarrows of apples to be turned into juice by Pomona the travelling apple press. A good number of the visitors rolled up their sleeves and helped with the crushing and pressing, much to the delight of the CWR team who were glad of a break. There was a talk by one of the team about aspects of apple tree management which was well received and may give rise to further talks / workshops on this theme in the future. It was great to see the schoolchildren and Susie Langley, our new head teacher in the afternoon. The children had a great time washing the apples and feeding them into the crusher whilst others pumped the press handle. They all seemed to enjoy tasting the juice (probably not recognising it as the "healthy option"!)

Many of the children and their parents turned up again to see the performance of The Big Squeeze, a play about Pip the Apple. The performance ended with a dance ably demonstrated by one of the actors and our very own Rob Wilkinson! A great time was had by all. A big thank you to all the members of the History Society who helped out with the event and kept the Heritage Centre open during the day.



## LOWER SOUTHBROOK FARM

### Holiday Cottages

Southbrook Lane

Whimble

Exeter

EX5 2PG

Tel: 01404 822989



Proprietors

Angela &

Stuart

Lang

Summer Holidays  
\*  
Winter Breaks

Central Heating  
\*

Colour Television  
\*

Swimming Pool  
(Heated May to Aug)

*"Enjoy the peace and quiet of the Devon countryside.... space for the children to play"*





What could you do with ten minutes of your time?

## 'The Mortgage Makeover'

Ten minutes is all it takes to determine if you're paying too much for your mortgage.

Ten minutes is all it takes to see whether we can save you thousands of pounds.

Ten minutes is all it takes to decide whether you can afford to pay your mortgage off early.

Ten minutes is all it takes for impartial, independent financial advice.

Contact Stephen Clare on 01404 823375

or email – [stephenclare@thinkpositive.co.uk](mailto:stephenclare@thinkpositive.co.uk)

or by post - Longfield Whimble EX5 2TF





## Whimple Womens Institute

Our August meeting was held at the home of our President, but due to the weather what was planned as a Garden Party became a Summer Tea Party - we just moved indoors. As always Ann Bowden was a delightful and welcoming hostess and everyone enjoyed the opportunity to socialize and to enjoy the excellent selection of food.

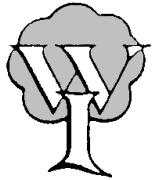
Our speaker at the September meeting was Ann Dalton, who gave us an insight into the design and production of bone china. Of particular interest were some of the miniature items she makes.

The annual outing took members to Sherborne Castle, a house that is still in private ownership and has the most fascinating history. The contents of the house are superb and the enthusiasm of the stewards made our tour doubly enjoyable. The grounds were landscaped by Capability Brown and many of our party intend to return for another visit.

The craft afternoons continue and some members have taken part in a day school to produce a patchwork cushion. Another day school helped people to 'get to know their sewing machine'.

The speaker at our October meeting will be Pauline Fox, whose subject is 'Women in Saudi Arabia'.

New members and visitors are always welcome. For further information contact **Ann Bowden** (tel. 01404 823450).



**Solar Heating Made Simple**

**LOCAL FAMILY RUN BUSINESS FOR ADVICE CALL:**

**Tel: 01404 823880 or Mobile: 07906 255326**

**Email: [info@solarsimplicity.co.uk](mailto:info@solarsimplicity.co.uk) Website: [www.solarsimplicity.co.uk](http://www.solarsimplicity.co.uk)**

- Generate Up To 70% Hot Water free
- Reduce Carbon Emissions And Climate Change
- Government Grant Available
- South West Generates Highest Solar Radiation In UK
- Installation Adds Value To Your Home
- Free Suitability survey by BPEC installer

## PARTY TIME?

**Family Celebrations,  
Milestone Anniversaries**

### *Marquee de ParTee*

**Pretty Party Marquees and  
Pavilion Tents hired for  
*Your Special Occasion***

**Complete service for tables  
chairs carpets lighting etc.**

**introductions to  
Caterers & Hogroasters**

**Philip & Angela Crisp**

**Kennford, Exeter.**

**01392 83 27 75**

**OR Visit us at:**

**[www.marquee-de-partee.co.uk](http://www.marquee-de-partee.co.uk)**

## The Jays



The Square, Whimble. EX5 2SL

Jan and John offer a friendly and relaxed stay at the Jays.

Close to Exeter Airport for which transfers are available

Colour TV in all bedrooms

Guest Lounge with tea/coffee.

Several local Pubs and Restaurants within easy reach -(pick up service)

Bed and full Breakfast menu:

£20.00 per person per night.

No smoking.

Phone: 01404-823614

Fax: 01404-823629

e-mail: [jaydiscombe@supanet.com](mailto:jaydiscombe@supanet.com)

## OAKS & PARTNERS

### AUCTIONEERS & VALUERS

invite entries for their regular sales of antique & later furniture, porcelain, silver and plate, jewellery, metalware, paintings & prints and items of general interest at

**The Old Tannery, Exeter Road, Cullompton**

[We're easy to find on the Honiton side of Junction 28 of the M5]

The saleroom is open for receipt of items for sale  
Monday to Friday between 9.00 am and 4.00 pm  
Bring items along for valuation on a Friday morning

We will be pleased to call to your home  
to discuss valuations without obligation or collect items for sale  
Individual items to full house clearances

**Tel 01884 35848** for further details or **01404 - 814540 / 812356** after hours  
We will attend Sandfords, Whimble (by kind permission of Mrs Pratt) from 10.30 to 11.30am  
on the first Wednesday of each month to discuss valuations or collection of items for sale



This is Mrs Susie Langley, the new Head teacher who came to us in September. She has already made a huge impact in the school, and is proving very popular. She is keen to raise the profile of the school within the village, and its involvement within the community. Why not give her a ring and let her know of events that could include the school? Also if you feel you would like to help the school, please get in touch (822584).



Mrs Langley is producing "Contact". a fortnightly newsletter of up to date information about the school and its pupils. You can access a copy on our new website: [www.whimple-primary.devon.sch.uk](http://www.whimple-primary.devon.sch.uk)

The Staff and Governors continue to work together to provide a safe, caring and friendly environment where all pupils have the opportunity to achieve their full potential. The school welcomes Mrs Langley and looks forward to working under her leadership.

**Pam Scanlan**, Chair of Governors.

## **Whimple Victory Hall**

The Hall Trustees will hold their  
**Annual General Meeting**

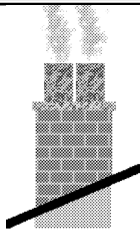
at 7.00pm

on Monday 15th October

In the Vivtory Hall Billiard Room

Everyone is welcome

# Chimneys Wood Burners Fires



Swept, Installed, Repaired,  
Lined and Built  
"All your chimney needs"

Alf Butler

**Tel: 01404 841611**

A fully insured and HEATAS  
registered Company

# ARK POTTERY

STUDIO, SHOP & GALLERY

Wide choice of affordable  
pottery direct from the potters, all  
designed and made on site. Also  
sculptures, pictures and cards.

**ENTRANCE & PARKING FREE**

- Have a go on the wheel!
- Pottery Parties
- Commissions
- Team Building Groups

Find us just off the Ottery/Sidmouth  
Road at Wiggaton (Follow the brown  
tourist signs from Ottery.)

**OPEN DAILY 10 a.m.- 5 p.m.**

Tel. 01404 812628

email:ark.pottery@btopenworld.com

## Historic Buildings

**Advisor on Conservation Repair /  
Sympathetic Alterations**

**Vernacular Buildings-  
Assessment, Proposals & Options**

**Listed Buildings-  
Planning Applications  
&  
Building Regs**

## **Michael Board Building Consultancy Ltd**

### **Modern Buildings**

Little Cot  
Hembury Fort  
Honiton  
Devon  
EX14 3LE  
Telephone  
01404 841699

**Design Service for  
New Build Home  
Projects**

**Extensions and Alterations to  
Properties-  
Designed & Drawn for  
Planning/Building Regs**

# OVER 65's PARTY

## 7th December 2007

The ladies of the village would once again like to thank the Cricket Club for raising nearly £200 from a Bingo session, this is the 14th year they have helped raise money for the Over 65's

There will be a meeting in November to make final arrangements for the Party - watch for posters

### **\*THIS IS YOUR INVITATION\***

The Ladies of Whimple Village invite the Villagers of Whimple who are over 65 years of age (before Saturday 1st December 2007) to a Christmas Party at the Victory Hall, Whimple on Friday 7th December 2007 at 7.00 p.m. for 7.30 p.m.

Please complete the slip below, cut it out and return it to Ann Bowden by Monday 26th November.



To: Mrs Ann Bowden  
Bradcott House  
The Green  
Whimple

I/We will be attending the Over 65's Christmas Party on Friday 7th  
December

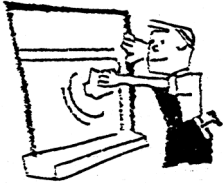
Name(s) \_\_\_\_\_

Address \_\_\_\_\_

\_\_\_\_\_

\_\_\_\_\_

I/We will require transport : Yes/No



WINDOW  
CLEANER

PAINTING & DECORATING  
TILER

PATIO PRESSURE CLEANING  
SHED ROOFS - RE-FELTED  
GENERAL HANDYMAN

(Excellent references if required)

*For that personal service*

Phone Mr Evans on 01404 822120



Tree & Hedge Planting & Aftercare ●

Contract Work ●

Garden Maintenance ●

Herbicide Application ●

Chainsaw Crosscutting ●

Strimming ●

Brushcutting ●

Call Daniel On:  
07974 385834



**DRM**  
WILLIAMS  
TREES & GARDENS

WORKING WITH

PERRIE HALE  
FOREST  
NURSERY



**N C HAMLYN**

FARM MACHINERY  
REPAIRS AND SERVICE

(Welding, fabrication etc.  
and garden wrought iron work)

Workshop facilities and mobile  
service

Contact Nigel Hamlyn on 01392  
466720

or 07702 431244 (mobile)

Paynes Farm  
Broadclyst

**M.J.COLES  
ENGINEERING**

(R.T. I.T. B. & CITY & GUILDS)  
SERVICING. ENGINE RE-BUILDS .

WELDING MOT. RECOVERY.

PICK UP SERVICE

FRIENDLY LOCAL MECHANIC

15 YEARS EXPERIENCE

FOR ALL YOUR MOTORING NEEDS

CALL

**MARC**

ON

WHIMPLE 822095 OR  
07785 740473 (MOBILE)



## HOW TO CONTACT THE POLICE

General enquires (24 HOURS) **08452 777 444**

**If life is at risk, or when there is an outbreak of fire dial 999**

To report crime or criminal damage, request advice or attendance, or be connected to a police station

### Tips to prevent cooking fires:

**Never leave cooking unattended** - Two out of five deaths in home cooking fires occur because the cooking was unattended.

**Keep cooking area clean** - Always wipe appliances and surfaces after cooking to prevent grease build-up.

**Do not store flammable objects near the stove** - Curtains, pot holders, dish towels and food packaging can easily catch fire.

**Always turn pot handles toward the centre of the stove** - Turning handles inward can prevent pots from being knocked off the stove or pulled down by small children.

**Wear short or close-fitting sleeves when cooking** - Fires can occur when clothing comes in contact with stovetop burners.

**Heat cooking oil slowly** - Heating oil too quickly can easily start a fire. Never leave hot oil unattended.

**Teach children safe cooking** - Young children should be kept at least 3 feet (1 metre) away from the stove while older family members are cooking. Older children should cook only with permission and under the supervision of an adult.

### What to do if a cooking fire starts:

**Put a lid on it** - If a pan catches fire, carefully slide a lid over the pan and turn off the stove burner. Leave the lid on until completely cool.

**Keep oven or microwave door shut if fire starts** - Turn off the heat. If flames do not go out immediately, call the fire and rescue, using **999**.

**Know how to use your fire extinguisher** - Not all fire extinguishers are alike. They are designed for specific types of fire. Make sure you have a clear escape route and the fire and rescue has been called before attempting to extinguish a small fire.

**Water and grease don't mix** - Never pour water on a grease fire. Water causes grease fires to spread.

**If the fire won't go out, call fire and rescue using 999.**

## TOO HOT TO HANDLE

**Protect your home and family from cooking fires**

Each year in thousands of homes, fires start in the kitchen, .

**Most of these fires could be prevented.**

*John Munslow 01404 823456*

# Historic Out-Buildings

Is it time that we were thinking about preserving old garden sheds, wooden workshops, garages, lean-tos' and the like? As I wander around the village it appears to have become "clinical" in the last ten years or so. Some rare buildings, houses and sheds that I remember with affection seem to have disappeared or their appearance has been altered to fit in with this modern, tidy, clean environment that has now become a trend. Here are some that spring to mind:

1. Knowle Cottage (opposite the Cricket Club). This was a unique wooden bungalow painted cream with a chimney stack to one side which had a great deal of character.

2. The garages/sheds behind 1 & 2 Rock Cottages - irreplaceable

3. The wooden building opposite the school gates at the entrance to "Sandfords". Formerly a bicycle repair shop, this building is currently undergoing some interim repair work in order that it may be preserved well into the 21st Century - it is believed to be over 100 years old. It was originally built with old railway sleepers and packing cases with rolled up papers & straw used for insulation. This building is set for the first ever SPO ( Shed Preservation Order).

4. Whiteway's factory - An architectural design that nothing could compare with - a mini town, semi-covered with corrugated iron and asbestos sheeting. If anyone has this cladding material about their person hang on to it - it is hard to find these days and very useful for quick repairs.

5. The Scout Hut. A 1950's pre-fabricated concrete garage with internal facilities and later add-ons. You won't find another example left in Whimple.

These buildings and many more I am sure other people will remember, are special in a number of ways. They were designed by human beings and put together by human beings who did not have huge amounts of borrowed money in the palm of their hands, only their hand tools and skills passed down from generation to generation. Many were put up just before or after WW1 & WW2 and were built with what materials were available; this usually consisted of waste products such as railway sleepers, packing cases, broken pallets etc.

At a time when we are supposed to be " saving the planet" the sale and installation of UPVC conservatories still rises; so does the sale of pre-manufactured sheds and "garden stores" imported from Far East with a life span of maybe 10 years tops. (The felt roof doing no more than 2 years).

I have a design for a 7ft X 5ft rough shed, ideal for the side of a house or garden and made only from recycled products which I will share with you in the next "News"

**AMPS**





# *TAYLOR MADE DRIVING*

Beginners

Pass plus

Pre 17 lessons

Refresher lessons

Diamond advanced driving

Motorway driving

\*\*\*\*\*

Theory & Hazard Perception Tuition

\*\*\*\*\*

Male & Female instructors

High 1st time pass rate

\*\*\*\*\*

Patient, Friendly & fun tuition

\*\*\*\*\*

A local independent driving school

Teaching local people to

**“DRIVE FOR LIFE”**

**CALL FREE 0800 652 66 69**

Andrew & Jill Taylor

"FLORAL ENCHANTMENTS"

Designer:

Morven Fletcher

Flowers for all occasions

Floral designs to your  
specification

Specialist in Wedding Floristry

Bodley Bridge Cottage  
London Road,

01404 822049



**JULIAN  
WILSON**

**Electrical Contractor**

1 Higher Woodhayes  
Farm  
Whimble

Tel: 01404 822641

**Your Friendly local  
Bed and Breakfast**



**David Brown  
Holway Barton  
Whimble  
Exeter**

**Telephone: (01404 822477)**

**Visiting Practice**

Day and evening  
Appointments by arrangement

**QUALIFIED**

**CHIROPODIST**



**3, Railway Cottages  
Whimble  
Exeter**

**01404 822372**

# CARE CONCERNS

Local care for  
Local people

Respite care, bathing, cooking,  
transport, infant/toddler care.

Minimum of 1hr

Very high standard of care given  
Fully qualified  
CRB Checked

Enabling people to remain n their  
own homes

For further details phone:  
01404 822096

# RED HOMES ESTATE AGENTS



0.75% No Vat  
Sole Agency Fee  
Why Pay More?  
16 National Offices and  
Growing Covering South Eng-

- Advertised in Express & Echo
- [www.rightmove.co.uk](http://www.rightmove.co.uk)
- [www.redhomes.co.uk](http://www.redhomes.co.uk)
- Accompanied Viewings
- Regular Feedback

Call The Aylesbeare Office Now  
for a Free Valuation on:  
01395 225552

# Complete Locksmithing Service



- 24 Hour Emergency Service
- Standard & Computerised Key Cutting
- Duplicate Keys Cut For Any Vehicle
  - Car Transponder Keys Cut
  - 24 Hour Lock Out Service
- Replacement Lock Installations
- Aluminium & Upvc Door Locks
  - Master Key Suites

MASTER LOCKSMITHS

- Free Security Assessments
- Locks Supplied & Fitted
- Safes Opened
- Burglar Alarm Installations
- CCTV Systems



Agents For Medeco Locks



**01392 411887**  
**FAX 01392 424817**



A Wide Range of Security Products  
Available For Demonstrations At...

- 131 Sidwell St. Exeter EX4 6RY
- Unit 1, The Space Place, Alphinbrook Rd. Marsh Barton, Exeter.

[www.guardian-security.sagenet.co.uk](http://www.guardian-security.sagenet.co.uk)



# DEVON HOME IMPROVEMENTS

LIMITED

*"Why Move - Home Improve"*

Your local home improvements specialists for all those building and maintenance needs

Devon Home Improvements can provide you with hands on design and planning, together with a comprehensive supply of tradesmen and materials

We pride ourselves on our expertise and we believe we offer the most friendly and efficient service at very competitive rates.

- **Kitchen & bathroom design / installation**
- **Exterior & interior decoration  
incl. plastering services**
- **Landscaping, patio, decking, garden walls,  
garden structures**
- **P.V.C.u Facia & guttering incl. cladding**
- **Garage door installations**

Call today for your no obligation quotation

**01884 277794**

Or visit our website at

**[www.devonhi.com](http://www.devonhi.com)**

<b>Whimble Parish Council</b>	
<i>Chairman:</i> Sara Randall Johnson	822524
<i>Clerk:</i> Mrs Gerri Turner, Penraddon, Hand and Pen	823385
<b>St. Mary's Church</b>	
<i>Contact:</i> Rev. Rob Wilkinson	822521
<b>SClub11, Impact &amp; Contact</b>	
Phil and Rebecca Dominy	822163
<b>East Devon Councillor</b>	
Andrew Dinnis	850363
<b>Whimble County Primary School</b>	
<i>Headteacher:</i> Mrs. S. Langley	822584
<i>Chair of Governors:</i> Mrs Pam Scanlan Albecq, The Green	822262
<i>P.T.F.A. Chair:</i> Mr R.Camp	823392
<b>Whimble History Society</b>	
<i>Chairman:</i> Richard Webber	822038
<i>Secretary:</i> Roger Smith	822244
<b>Whimble Mothers Union</b>	
Margaret Burrough Gateshayes Farm	822257
<b>Whimble Pre-School &amp; Toddler Group</b>	
<i>Chair:</i> Sally Young 11 Chard Ave	823228
<i>Playleader:</i> Jo Westney Glencroft, Church Road	822168
<i>Toddlers:</i> Karen Bell 5 Lower Woodhayes Court	823443
<b>Whimble Womens Institute</b>	
Mrs. Ann Bowden, Bradcott House, The Green	823450
<b>Whimble Over Sixties Club</b>	
Mrs B. Iball, 11 Rectory Close	822905
<b>Whimble Recreation Trust</b>	
<i>Knowle Cross Sports Ground.</i> Mr P. Garraff, Luppit	891206
<b>Whimble Village Produce Association.</b>	
<i>Chairman:</i> Adrian Williams, 47 Slewton Crescent	822430
<b>Whimble Football Club</b>	
<i>Chairman:</i> Wayne Kennedy	822855
<i>Secretary:</i> Karen Delves	822258
<b>Whimble Tennis Club</b>	
<i>Secretary:</i> Judith Imbo	823240
<i>Treasurer:</i> J. Hughes	822659
<b>Whimble Cricket Club</b>	
Mr. R.J.Smith	822244
<b>Whimble Victory Hall Management Committee</b>	
<i>Secretary:</i> Pam Scanlan, Albecq, The Green	822262
<i>Booking Sec:</i> Ali Tierney	822724
<b>Whimble Post Office</b>	
Alison and Jim Creasy	822359
<b>Whimbletons</b>	
Emma Palmer	823083
<b>Neighbourhood Watch</b>	
John Munslow, 44 Slewton Crescent	823456
<b>St. Mary's Bellringers</b>	
<i>Captain:</i> Liz Silk	822389
<b>Whimble Scout Group</b>	
<i>Group Scout Leader (and Marquee Booking):</i> Alex Spry	822844
<b>Whimble Book Group</b>	
Katy Howard, 9 Whiteways Close	823038

# The Whimble News Team

WN50

## **Editor**

Ed Hitchcock 823194

## **Production**

Bob Scanlan 822262

Vivienne Leonard 822415

Sally Wilde 823246

## **Delivery**

Ed & Nicky Hitchcock 823194

## **Advertising**

Julie Millward 823985

## **Community diary**

Nicky Hitchcock 823194

## **Treasurer**

Miles Leonard 822415

# LIVING AND SELLING LOCALLY

**HALLS ARE PLEASED TO OFFER THE FOLLOWING SERVICES**

- FAMILY OWNED BUSINESS
- STRONG LOCAL KNOWLEDGE
- SUPERB COLOUR DETAILS
- HIGH IMPACT ADVERTISING
- FREE VALUATIONS
- ACCOMPANIED VIEWING
- FLOOR PLAN SERVICE
- RESIDENTIAL LETTINGS

**TEL: 01404 812000**

**View all properties on the UK's No.1 website: [www.rightmove.co.uk](http://www.rightmove.co.uk)**



**15 Broad St, Ottery St Mary, EX11 1BY**

**Tel: 01404 812000 Fax: 01404 815777**

**Email: [halls@eclipse.co.uk](mailto:halls@eclipse.co.uk) Web: [hallsestateagents.com](http://hallsestateagents.com)**

# *The New Fountain Inn*

*Whimble, Devon*



*A Traditional Olde Freehouse Village Inn*

*As recommended by CAMRA ,  
The Good Beer Guide, The Real Ale Guide  
and the Quiet Pint Guide*

*Real Ales  
Home Cooking*

*Lunchtime & Evening Meals 7 days a Week*

*Sunday Roasts etc - Vegetarian Choices  
Handmade Desserts, Children's Menu  
& Toddler Portions*

*Join us for a Friendly Drink, Bar Snack or  
an A La Carte Meal*

*Bookings are Advisable*

*Tel: 01404 822350*