

Whimble News



Sue Ayres raising the thermometer to £163,000 - see page 16

April/May 2024

www.whimplenews.uk



The New
FOUNTAIN INN

Olde Worlde family run Free house in the heart of Whimble.

Real Ales.

Local Ciders.

Good Food.

Open 7 days a week 11am -11pm.

Serving food from Wednesday through to Sunday.

Lunch is served from 12pm – 2:30pm Wed – Sat.

Evening meals are served from 5:30pm – 8:30pm Wed –Fri.

Evening meals are served from 6pm - 9pm on Sat.

Sunday meals are served from 12pm – 6pm.

Bookings can be made via the phone or through our website.

Tel 01404 643730 www.newfountaininn.com



A LOCAL PUB FOR ALL



Please keep an eye on our Facebook page for info on upcoming events, such as quiz nights, open mic and live music.

Editorial

Welcome to the springtime edition of Whimble News.

In the last edition we feared that the next would be our last. The team had become too small for it to continue. The good news is that three people have now stepped forward and offered to help. Samantha Upton, who introduces herself on page 5, has agreed to replace Ed Hitchcock as our new editor. Jenny Fells has taken over the advertising and Alex Tooze will be helping with production. We could still do with more help to restore the team to its original size of ten. If you would like to join us, please let me know.

Ed will now, finally, be able to leave the team after 25 years. He and Nicky left the village some time ago but Ed has continued to support us ever since. His 'Ed the Ed' editorials over the years have been a delight. 'Thank you' Ed.

Whimble News has been saved but is the same true for our church? St. Mary's has been at the centre of our village community, not just for decades, but for centuries. Now it seems the church itself could be under threat. In the article on page 10 Rev. Marc warns us that there is a very real possibility that, with the currently insufficient funding, our church could close.

Elsewhere in the magazine you will read that the 2002 village survey showed that the main reason for people coming to live in Whimble was the 'village lifestyle' and we are rightly proud of our village's community spirit. However, as I read through the pages of this magazine, it seems that the very organisations that create that community spirit are struggling for lack of volunteers. The Heritage centre, the Garden Club, and the Cricket Club are all asking for help and there are five vacancies on the Parish Council. Perhaps you could provide that help.

One person who has made a major contribution to our village is Rory Maguire at the village shop. We are sorry to learn of Rory's illness and give him and his family our very best wishes and hope for a speedy recovery.

The POW&R group works hard looking after the interests of our village. In their article on page 50 we learn about progress and problems associated with the Neighbourhood Plan. They express some concern about the Parish Council's role in the plan's completion. Perhaps the Council could respond in the next edition.

On the front cover is some more good news with a picture of the Victory Hall chairman, Sue Ayres, updating the fund raising thermometer to show that the hall committee have now raised £163,000 towards the refurbishment and future extension of the hall. Very well done!

Our next edition will be a special one as it will mark 25 years of Whimble News being produced by the current team. We welcome your articles for that edition which will be delivered in June.

Send your contributions to me at: bob@bobscanlan.co.uk, by 12th May please.

Bob Scanlan

07845 325532



PLANNING & PROPERTY EXPERTS

01404 821999
RANDALL@BUILDCONSULTANTS.CO.UK

Building Design & Planning Permission

Call or email us today for a free consultation -
or why not pop in and see us at The Hive,
opposite the Thirsty Farmer

YOUR VISION, OUR EXPERIENCE



Experts in nature

Whimple-based tree surgeon

Dendrologic Arboricultural solutions

Arboriculture
Tree pruning + removal
Hazardous trees
Tree health
Planting and establishment

Ecology
Habitat management
Advice
Survey

Contact Dylan on: 07828 013 486
dendrologictrees@protonmail.com

BARRY SEAFORTH DECORATING SERVICES

Est 1979

PAINTING WALLPAPERING

SPECIALIST FINISHES MURALS TILING

COVING CARPENTRY ALTERATIONS

REFERENCES AVAILABLE

Call Barry on 01297 22434
or 07712 120635

or email: barryseaforth@gmail.com





NEW WHIMPLE NEWS TEAM MEMBERS!

Thank you so much to Samantha Upton, Jenny Fells and Alex Tooze, who answered our call for help!

Samantha will be our new Editor, Jenny will be taking over Ed's Advertising role and Alex will be lending a hand with Production.

Thank you all for stepping up to save our lovely magazine

We could still do with some more help so please get in touch if you would like to join us!

An introduction from our new Editor:

Greetings, Whimple residents!

I'm Samantha, and my journey to Whimple began two years ago when my partner Steven and I decided to make this charming village our home. In our previous issue, I was moved by Bob and the team's heartfelt plea to safeguard the Whimple News from fading into obscurity. Like many of you, I felt a pang of sadness at the thought.

Originally hailing from the Midlands, I've spent the last 16 years navigating various locations due to my partner's service in The Royal Marines. However, upon settling here, we were pleasantly surprised to find a quaint magazine awaiting us at our doorstep, serving as a delightful window into our community. It's a rarity to encounter such a thoughtful gesture, and I felt compelled to seize the opportunity to contribute to our village's fabric. Thus, I am honoured to step into the role of editor, following in 'Ed the Ed's footsteps.

Over the coming months, the team will graciously guide me through the intricacies of the position, and I aspire to uphold the standard of excellence they have set in serving our community for many years.

As I embark on this journey, I extend my heartfelt wishes to the rest of the team for a bright future ahead. I am looking forward to working with them and I eagerly anticipate the chance to connect with each of you as I explore our village with our beloved maltipoo puppy, Marley, by my side. Should you spot us around the village, don't hesitate to say hello!

Warm regards,
Samantha



Sam Upton
with her husband Steve
and family pet Marley



**Andy
Brooker**
Monumental Mason

Whimble based

**Traditional
Memorials**

Handcut Lettering

**01297 33290
07931 322291**

SOUTH WEST PADDOCK CARE

JONTY CORBIN
01404 812139
07512678976



- Topping
- Harrowing
- Rolling
- Hedge-cutting
- Spraying - weed control
- Soil sampling
- Lime spreading
- Fencing, field shelters, stables
- Fully insured and qualified

www.southwestpaddockcare.co.uk

**TRY OUR
PAYMENT PLAN**

3, 6, 9 or 12 months
THE EASY WAY
TO PAY

RIDGE ROOFING



AT THE TOP

Guaranteed
to beat any
genuine
produced
quote

**FOR BOTH
QUALITY
& PRICE**



& SCAFFOLDING SERVICES LTD

ALL ASPECTS OF ROOFING UNDERTAKEN - FROM LEAKY ROOFS TO RE-ROOFS

Ridge Roofing Ltd is a well-established company with over 25 years' experience behind them, working in partnership with most of the leading estate agencies.

- Slating • Tiling • Flat roofing • Fibreglass flat roofs • Chimneys/Leadwork • Turnerized slate roofs • Guttering/uPVC/fascia boards
- Storm damage/insurance work • All grant work undertaken
- Insurance backed guarantees • Full public liability insurance
- Free written quotations • All work guaranteed



T: 01404 891813 M: 07789 555685 • stephen.wattsr@gmail.com • www.ridge-roofing.com



What's On In Whimble

April

6th Soup'n'Sarnie at the Victory Hall 12noon to 1.30pm - with free soup for children 11 and under.

9th WI meeting, 'Exeter Cinema, the Golden Age' by Jon Bell - 2.00pm in the Hub.

13th Front Row Club - 7.00 for 7.30pm in the Victory Hall

27th Soup'n'Sarnie at the Victory Hall - 12noon to 1.30pm

May

2nd 'The History of Whimble's Holy Well', Talk by Louise Scanlan - 7.00pm in Whimble Church. See page 27 for more information.

11th Front Row Club - 7.00 for 7.30pm in the Victory Hall

17-19th Theatre 4All - Open air production Toad of Toad Hall- Rull House. See pages 28 & 29 for more information.

18th Whimble and District Gardening club - Annual plant sale in the Village Hall. See page 54 for more information

25th Soup'n'Sarnie at the Victory Hall - 12noon to 1.30pm

June

8th Front Row Club - 7.00 for 7.30pm in the Victory Hall

22nd Soup'n'Sarnie at the Victory Hall - 12noon to 1.30pm



O'DELL PLUMBING & HEATING

jasonodell.plumbing@gmail.com

07974 818833

FOR ALL TYPES OF GAS AND OIL HEATING INSTALLATIONS.

BOILER SERVICE, REPAIR & BREAKDOWNS.

BATHROOMS & SHOWERS.

UNVENTED HOT WATER SYSTEMS.

UNDERFLOOR HEATING.



4094



I (Rory) would like to start this article by saying a big thank you for the kind wishes from customers and the extra support provided by our staff, my wife Sharon, her brother Paul and my sister Sarah over the past three months after I was diagnosed with kidney and lung cancer and needed to undergo Chemotherapy treatment at Exeter. This has taken me away from the day to day running of Whimble Stores and I will need to be in a 'back office' role, limiting contact with other people until the treatment finalises.

Our parcels service has improved since the last article and we are now additionally accepting tracked delivery and special delivery parcels and envelopes. If you are buying postage for a parcel via the Royal Mail website, it will orient you towards using the free collection service. For many people who work away from home, this is an inconvenient option but the design of the website does not seem to allow anything different. The trick is to continue as if the parcel will be collected and then when you have added the parcel to the basket, you will see an 'I will drop it off' option on the right hand side. Click that option and then select 'Post Office'. Once you have the QR code or label printed, bring it into Whimble Stores for sending.

Don't forget, we can also do online shopping returns, parcel collection, stamps, cash back and bill payments.

By the time you read this article, stamp prices will have gone up (2nd April). The new prices are £1.35 for 1st Class, 85p for 2nd Class, £2.10 for Large Letter 1st Class (up to 100g) and £1.55 for Large Letter 2nd Class. Other stamp prices will have increased and we have an up to date list of prices available.

We have created a new Facebook page for Whimble Stores as the old one was getting spammed. The new one is at www.facebook.com/whimble.stores and we would appreciate a few followers. We will post updates about new stock lines at the shop such as new gluten free products, reminders about upcoming events such as Fathers Day, opening times for public holidays etc. We also intend to post to Whimble What's On.

If you have noticed the delicious aroma of freshly ground coffee when visiting the Stores, this is because our coffee and the seating area in the shop are proving to be very popular as a social gathering spot. It's a great place to meet friends from around the village and catch up over an iced bun or a flapjack.

Finally, we really do appreciate the custom that our regular customers provide as this is keeping Whimble Stores operating for the village. The economic situation has been tough for everyone and many convenience stores such as us have gone to the wall with increased electricity prices, increased stock prices and from April, increased staff costs. A £1 spent in Whimble Stores, goes to local staff and supports local food industries. A £1 spent in the big supermarkets helps the CEO achieve his £multimillion bonus payout.

Sharon, Rory, Sabrina and the team

**The Square
Whimble
EX5 2SN**



**01404
822316**

Rory, Sharon, Sabrina and Team welcome you to our Stores and Coffee Shop for fresh Devon bread, milk, vegetables and eggs. Frozen, fresh and canned foods. Cards, stamps, Gift Cards, stationery and more.

We also provide Parcel sending and collection, bill payments, cash withdrawals, electricity and phone top-ups, gift cards and cash withdrawals.

Opening Times

Mondays to Fridays	08:00 to 18:00
Saturdays and Sundays	09:00 to 12:00
Public Holidays	08:00 to 12:00

Maths & Physics Online Tutoring

GCSE & A-Level

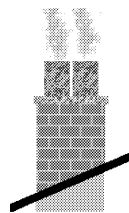
*Personal coaching to suit your needs,
with experienced mathematician.
Member of the Tutor's Association.*

Daytime/ Evening/ Saturdays.

For more information please see my website:
robertpooleymaths.co.uk

**Robert Pooley 01404 822333
robertpooleymaths@gmail.com**

Chimneys Wood Burners Fires



**Swept, Installed, Repaired,
Lined and Built
"All your chimney needs"**

Alf Butler

Tel: 01404 811843

**A fully insured and HETAS
registered Company**



CARPENTER, KITCHEN FITTER JOINER

INNOVATIVE.COMPETITIVE.REPUTABLE
EXCEPTIONAL STANDARD OF COMPLETION
FLEXIBLE TO ALL CLIENTS PRECISE NEEDS

HENRY TETLEY
0786865842

EMAIL: buildwithtetley@gmail.com

SCAN QR CODE TO ACCESS MY ONLINE
PORTFOLIO OF WORK



Could a Personal Assistant make life a little easier?



The affordable alternative to home care,
where you choose who supports you

Hub Personal Assistants can help with:

- Companionship
- Domestic tasks
- Meal preparation
- Personal care
- Shopping
- Respite
- Live-care
- Assistance to appointments



Call us today for a friendly no obligation chat.

01392 982 832
www.hubcaresupport.co.uk



Your local wireless security system experts

“LESS MESS LESS FUSS!”

- Serving the South West since 1997
 - SSAIB registered installers
- Bespoke system surveys by engineers
- Installation, servicing and system upgrades
 - Only the best quality products used
 - A local, friendly service you can trust

“DON’T WAIT TILL IT’S TOO LATE!”

CALL US TODAY ON: 01392 487032
www.ellardsecurity.co.uk

Lamb Hill Garden Machinery

• Sales • Repairs



• Servicing

Andrew has over 20 years experience
in the garden machinery industry.
Previously at Otter Nurseries & more
recently at P.J.Flegg.

FOR ALL YOUR GARDEN MACHINERY NEEDS

CALL ANDREW TODAY

01404 823100/07773 579072

Moorview Industrial Estate Straightway
Head Whimble Devon. EX5 2QT

Email: lambhillgardenmachinery@hotmail.co.uk

Grandisson

FIRES, FIREPLACES,



STOVES



& DECORATIVE PLASTER

FREE ADVICE AND SURVEYS
EXPERT AND QUALIFIED FITTING BY OUR OWN FULLY SKILLED TRADESMEN
VISIT OUR LARGE SHOWROOMS

GRANDISSON, 26-28 FINNIMORE IND. EST, OTTERY ST MARY, EX11 1NR
TEL: 01404 812876

Otter Care Services



Specialist and trusted provision of domiciliary care services to support an individual in their own home in Ottery St Mary and the surrounding area.

With over 20 years' nursing experience in the community and within the care sector, Christine provides that additional support with day-to-day household tasks, personal care or any other activity that allows an individual to maintain their quality of life and independent living.

Services include:

- Companionship
- Getting up & putting to bed
- Support with medication
- Escorting to appointments
- Overnight care
- Social outings
- Shopping
- Wellbeing Support
- Personal care
- Home help
- Meal time assistance
- Family Support

Contact Christine on:
Tel: 01404 813315. Mob: 07984 150696
Email: ottercareservices@hotmail.com



WHIMPLE CHURCH

<http://churches4all.org/>

News from the church - Church closures.

Hello my friends,

How would you feel if Whimple church shut? Maybe you would miss it at Christmas & Easter but other than that it wouldn't be much of an issue. Maybe it not being there for family baptisms, weddings and funerals but you could live with that. Maybe at Remembrance Sunday you could always travel up to Ottery or Honiton. Maybe you enjoy the coffee mornings and the Christmas fair but they are not really essential. And the Foodbank during COVID was great but there would always be others. Or maybe you would be pretty upset.

Of course, possibly you believe it could never happen. The Church of England after all has vast reserves and would never let a large church like Whimple shut, after all it has been there forever.

Well, here are a few scary facts: Every parish church is paid for by the people who use it on a Sunday, we get a proportion of the fees for weddings and funerals and everything else we have to find through fundraising. Every parish church is independent, and we receive zero outside funding for day to day running costs. At Whimple that is around £160 per day: you read that correctly. Every day just to keep our church open costs us £160. And, we are struggling to cover that. In fact this year we are planning for a deficit budget of thousands of pounds.

We will need to pay that out of our reserves but they won't last forever. And when it is gone, the church would be locked and the keys passed back to the Diocese of Exeter. They will not reopen it. If it seems inconceivable that could ever happen take a trip up to St Michael's up on the hill behind Honiton, it was closed in 2019 and now is in a pretty sorry state. A 2022 report found that up to 368 churches could be at risk for closure in the next two to five years, and for context the Diocese of Exeter itself is currently running a very large deficit of it's own which it will struggle to continue covering out of its unrestricted reserves (and once again, every diocese is financially independent within the Church of England). And that closure rate was before the full affects of COVID became clear.

Parish churches have been relying upon a declining number of people to help pay and care for them for decades and we are now at a tipping point in many of our parishes. Thanks in part to COVID pushing us along a path we were already set on. Why am I telling you this, well, we cannot continue without your help. Yes, the church will limp on for a few more years as the small group of volunteers struggle to keep it open and organise fundraising events, but the trajectory is clear.

How can you help? The simplest is to sign up for a small monthly donation through the parish giving scheme, this safe and secure system gives us a reliable cash flow, or you can consider a legacy in your will. If you choose you can specify what the donation is for; so, if you have no religious belief but appreciate the history of the building you can decide to instruct any donation is purely to maintain the building and cover things like insurance & electricity.

Ultimately the church does not belong to the vicar, the church council or even the congregation, it belongs to the parish, and it is going to take the parish to keep it there for another few hundred years.

Please email me if you would like to make a donation or visit:

<https://www.paritygiving.org.uk/home/>

Thank you. God bless. Rev Marc.



Front Row Club

WHIMPLE

Our film nights allow you to see the best of current releases, along with some classic favourites, in friendly surroundings, soft chairs and free of all the hassle or travelling to surrounding cinemas. People come from far and wide, so it's not a closed shop! The showings are generally on Saturdays, once a month, in Whimble Victory Hall.

How the Front Row Club Operates:

- Doors open at 7pm for 7.30pm.
- The show starts with a short B movie
- There is always a strategically-timed interval for ice creams, tea, coffee, and nibbles
- BYO alcohol and glasses
- Full season membership (September – June) is £20.00
- Temporary memberships for visitors are available on the door for £4.50 per month - everyone is welcome

Dates for 2023/4 Film Season

Saturday 13th April

Saturday 11th May

Saturday 8th June

**SEE VILLAGE HALL
NOTICEBOARD FOR FILM TITLE**

Or email frontrowclub@gmail.com or scan



Whimble Parish Council



Community Speed Watch Initiative

A number of local residents have expressed concern about speeding vehicles in the village, particularly on Church Road.

We are looking to set up a community Speedwatch initiative but need volunteers to come forward to be part of this.

Community Speed Watch is a community-operated feedback scheme designed to allow unpaid volunteers to officially monitor and report to the Police the details of speeding vehicles in specific areas where speeding is of concern to the Community. Speed Watch is not enforcement but supports local Communities to improve road safety. It does this by:

- Educating drivers by displaying their speed with a view to improving driver behaviour.
- Delivering locally based feedback schemes where speeding is of specific concern to the Community, operated by volunteers and supported by the Local Highway Authority and Police.
- Officially monitoring and reporting to the Police the details of speeding vehicles in specific areas where speed is of concern. These speed monitoring reports enable the police to:
 - Send advisory letters to the Registered Owners with the aim to educate rather than punish.
 - Use the data gathered to inform Police and others on the allocation of resources and general road safety issues.

Volunteers need to be over 18 and willing to undertake training.

If you are interested please contact the Clerk at the email address below.

Councillor co-option

There have been some changes on the Council:

- Councillor Sarah Johnson has resigned
- Councillor Todd Olive has recently joined the council
- Councillor Denise Dearden is now the Vice Chair

The Parish Council currently has five vacancies so if you are interested in joining the Council please get in touch.



Allotments

The Council has recently updated its policy relating to allotments, which can be found on the Council website. If you are interested in having an allotment and wish to join the waiting list, please contact the Clerk for more information.

For existing allotment holders, please contact the Clerk if you have any queries.

Amy Tregellas

Whimble Parish Clerk

Website: www.whimbleparishcouncil.org

Email: whimbleparishcouncil@gmail.com

We are also contactable on Facebook.

The key to your future peace of mind

Marsh Barton
01392 277467

Units 1, 2 & 6 The Space Place
Alphin Brook Road
Marsh Barton
Exeter EX2 8RG



(South West) Ltd.
MASTER LOCKSMITHS
EST 1974

Sidwell Street
01392 217328

131 Sidwell Street
Exeter
EX4 6RY

email: sales@guardiansecuritysw.co.uk
www.guardiansecuritysw.co.uk



Reiki Healing

An alternative, holistic form of healing



Reiki may help you with

- Stress
- Anxiety
- Being overwhelmed
- Chakra balancing
- Pain management
- Spiritual connection
- Relaxation



- 1 hour session £50
- 30 minute session £30
- Distance Reiki £25
- Reiki training available



To book contact Kerry: 07791 171821
kerry@chi-quilibrium.com www.chi-quilibrium.com
40 Slewton Crescent, Whimble, EX5 2QA



Tarot Readings



Tarot Readings can give you a different perspective on life

Sometimes we feel a bit stuck, feel like we are at a crossroads, or are looking for guidance.

Whatever your question, I work with you, often creating a unique tarot spread to see what the cards reveal for you!

- 1 hour Tarot appointment £40
- Tarot Party (for up to 6 people) £120



Chi-quilibrium

Chi [chei] noun: the circulating life energy
Equilibrium [eh-vee-leeb-ree-um] noun: a state of balance

- **Water pump**
 - supplies
 - repairs
 - installation
 - fault diagnostic
- **Private water supplies**
- **Filtration**
- **General domestic plumbing**

DPPS

07738 470274

*Friendly, professional
Whimble-based service*

chris@dpps.uk

www.dpps.uk

Devon Pump & Plumbing Services

- blockages
- jetting
- CCTV surveys
- repairs
- lining
- drain tracing
- pitch fibre reforming
- pipe bursting
- septic tank/treatment plant installation
- soakaway problems
- water leak detection
- water leak repairs
- moling
- renewals
- Patio, Driveway & Decking cleaning

Tel: 01392 461670

Mobile: 07834 712345

www.drainwizard.co.uk



gs gilbertstephens

Local legal & financial advice

Call our Exeter office on:

Legal Services **01392 42 42 42**

Financial Services **01392 34 64 64**

Or contact one of our other offices

Ottery St Mary 01404 81 22 28

Sidmouth 01395 51 24 43

Visit gilbertstephens.co.uk for more info

Gilbert Stephens is the trading name of Gilbert Stephens LLP which is authorised and regulated by the Solicitors Regulation Authority (no. 536070) and Gilbert Stephens Financial Services Ltd which is authorised and regulated by the Financial Conduct Authority (no 579899).





WHIMPLE VICTORY HALL

Registered Charity 291496

at the heart of the community



The Victory Hall is not just my village hall; it's your village hall too.

Please help us to deliver our plans to improve the hall for the benefit of the whole community by supporting our community fund raising initiatives.

March 18th marked the start of National Village Halls Week.

'Village Halls Week (VHW) is a national campaign, shining a spotlight on the contribution England's 10,000+ village halls make to rural communities. It is an opportunity for hall management committees to celebrate their work and get inspiration from others, says Action with Communities in Rural England (ACRE).

This article highlights the work we are doing at our village hall.

The plan to build an extension is at the top of our agenda and the first quarter of 2024 saw a much needed boost to our extension appeal. **To mark the start of Village Halls Week we were able to raise our appeals thermometer by a total of £15,000 to £163,000.**

The money raised came from several sources; a grant (the subject below), a couple of fundraising events and more importantly, from 2 very generous donations given by Whimple residents totalling an amazing £1050 - one was for £800 and the other £250. I would like to extend a big thank you to both families for their support, it is very much appreciated.

We announce a U-Turn relating to the replacement of the roof at the hall.

In 2022 Queen Elizabeth's Platinum Jubilee Village Halls Fund was announced. The aim of the fund was to support the modernisation and improvement of village halls so that they were fit for purpose. The fund was offering grants covering 20% of the cost of a project.

At the time our plans to build an extension were not fully formed so we pursued one of our phase two projects - to replace the 1960's single skinned metal roof with a modern triple skinned insulated roof. The new roof would conserve heat in the winter and deflect the sun's rays in summer. We submitted our application in February 2023, but unfortunately in July 2023 we heard that our bid was unsuccessful.

By this time our extension plans were well underway so we made the decision to shelve the roof replacement and concentrate on the extension and we announced this course of action. However, a few weeks ago we heard that a later review panel had awarded us a grant of £12,800. We were very grateful and have accepted. **The new roof, along with new fascia and guttering will be erected during the school holiday in August this year.**

MANY THANKS – Sue Ayres.

WVH £250k Club



Whimple Victory Hall management trustees have launched a major fundraising drive to raise the £250,000 required to fund our extension plans. The £250k club will provide the local community with a great way to support us whilst having a bit of a flutter! Here's how it will work...

1. Participants pay £6 a month. This buys you one membership number (that we will allocate), which enters you into the monthly draw.
2. The prizes will total up to 30% of the annual income and there will be at least two prizes each month. The remaining proceeds will be put towards the hall extension fund.
3. Payment will typically be by standing order. These can easily be set up if you use mobile or online banking, or by going into your bank. However, if required we will also accept cheque payments for lump sums. We are hoping to make Direct Debits available when practicable.
4. The draws will be carried out by management trustees, generally during monthly committee meetings.
5. To register for the draw and view the full rules, scan the QR code, visit <http://tinyurl.com/whimple250kclub> or pick up a form at the hall. Please direct any questions via email to whimple250kclub@gmail.com.
6. The first draw will be held on Saturday 27th April at Soup'n'Sarnie.



Signup today and you could be one of our first winners!





DAN PLANK

Master Thatcher

T: 01404 823081



 M: 07881 942516

daniel.plank@yahoo.com
djpmasterthatcher.co.uk



The Devon Celtic Band For All Occasions

See our new website: slackmagirdle.net

Find us on Facebook

for more details or to contact us:

01404 823083 empal1@icloud.com

New look, same great band!



EVERGLOW Chimney Sweeps

Whimple based and your LOCAL sweep

NO MESS, NO FUSS

APICS Member, Fully Insured

Tel: 07522 619308

Email: everglowchimneys@gmail.com



**SFA APPROVED
CHIMNEY SWEEP**

AF VW camper hire
Farrington, Devon,
EX5 2HY

Tel: 07952 230199
email: angela@afvwcamper.co.uk
www.afvwcamper.co.uk



near Crealy,
Westpoint &
Exeter airport



AF VW
camper hire

Discounted rates

Living or working in Devon and the Southwest ?

We offer the following discounts off the price listed on our website
(subject to acceptable proof of being Devon/SW based):

Dec-Feb 20% off listed price
Mar-May 15% off listed price
Jun-Nov 10% off listed price

**Supporting businesses and the local community in
Devon and the South West**

Dear neighbours,



I hope this post finds everyone safe, well, and dry after the extremely rainy start to the year. In this edition, I'd like to draw everyone's attention to two important consultations that are ongoing over the course of April/May. The first of these, commissioned by the Parish Council and funded by East Devon, is a local



Housing Needs Survey. Every address in the Parish should have, or will soon – depending when you receive this! – receive a copy of this survey in the post, which you can complete and return in the provided envelope or preferably online at <https://www.surveymonkey.co.uk/r/WhimpleHNS> (or scan the QR code). This survey will help to inform the Whimple Neighbourhood Plan, by providing detailed information about actual housing needs within the village – for example, whether you need to downsize or upsize, need an adapted or more accessible home or need affordable or social housing. Even if this doesn't apply to you – please spend a few minutes filling this out to help the Parish Council. In addition, **if you know anyone who has had to move out of the village, can't afford to move here, or is in other similar circumstances:** please pass on the link so we can ensure their need is captured too. The deadline for completing the Whimple Housing Needs Survey is May 6th.

The other is a further consultation on the emerging East Devon Local Plan, which is expected out in mid-April. This will cover several topics that weren't



in the previous consultation over Winter 2022/23. The most important of these being our Green Wedge policy, which is designed to prevent settlements merging together through new development. One of these wedges lies between the West edge of Whimple and the east edge of the designated Cranbrook Expansion Areas. Officers had recommended cutting these to meet stricter rules imposed by the government; following my efforts and leadership at Strategic Planning Committee in February, this was defeated and the current proposal is to maintain the Green Wedges as they are. However, **it's extremely important that the community makes the importance of these Green Wedges clear through this consultation** to help us defend that position against Conservative government policy. The direct link for this consultation was not out at time of writing, but will be available via the East Devon website at <https://eastdevon.gov.uk/community-engagement/> (or scan the QR code) – please take a few minutes to respond.

Three final short messages from me. The coming weeks will see at least elections for our Police & Crime Commissioner on 2nd May – and possibly also, at time of writing, the next General Election, which must be called this year. The deadline to register to vote in time for 2nd May is 16th April, which you can do at <https://www.gov.uk/register-to-vote>. Following changes made last year, you now need photo ID to vote; to find out if you've got a valid form of ID, or apply for a free

Voter Authority Certificate, go to:

<https://www.gov.uk/how-to-vote/photo-id-youll-need>.

If you're not able to access these webpages for whatever reason, please do pop in to my regular surgeries and I'll be happy to help – details below.

Lastly, I've had a number of messages from folks around the village who live next to or near to our public footpaths, or own land which one of these footpaths cross, raising some concerns. I've been asked to gently remind everyone to please treat these paths as if they were your own property – whether that's picking up dog litter or respecting fences, gateways, and the like. I know we're all proud of our village – let's keep it that way.

If you'd like to discuss any of this with me, please do come along to my regular surgeries - ongoing at The Hive, opposite the Thirsty Farmer, where I'm available 4pm-7pm on the first Monday, and 8am-12pm on the third Monday, every month, no appointment needed – or contact me at todd.olive@eastdevon.gov.uk or on 07925 847933. It'd be great to see you.

Cllr Todd Olive

Whimble & Rockbears Ward, East Devon District Council

Assistant Portfolio Holder for Coast, Country & Environment

KILN-DRIED HARDWOOD LOGS

IDEAL FOR OPEN FIRES AND WOODBURNING STOVES

Beech - Birch - Ash - Sycamore - Oak - etc
Free sticks with every load



For Helpful Advice and Prompt Deliveries
Telephone Exmouth (01395) 277242



GEOFF DELVES ROOFING

**YOUR FRIENDLY, LOCAL ROOFER,
WITH OVER 30 YEARS IN THE TRADE**

**PLEASE CALL ME IF YOU WOULD LIKE
A QUOTE FOR ANYTHING FROM
REPAIRS, FLAT ROOFING AND
TILE REPLACEMENTS, TO A FULL ROOF
INSTALLATION OR SLATE WALL
CLADDING.**

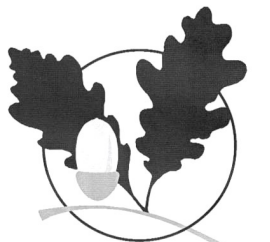
07939 879305

01404 823258

(WHIMPLE)

Oak Building Services

Quality works at competitive rates



renovations
extensions
patios & fencing
decoration
bathrooms
kitchens
roofing
carpentry
maintenance

References for all past projects available

Contact Trevor Oakaby

at Brickyard Cottage, Whimple EX5 2PP
on 01404 822655 evenings & weekends



EASTERBROOK, EATON LTD



Chartered Accountants-Registered Auditors

**Relax!.....let us take care of all your Taxation,
Accountancy and Business affairs.**

For a *free initial consultation*, contact us at
8 Jesu Street, Ottery St. Mary, EX11 1EU

Tel: 01404 812555

Email: advice@ee-osm.co.uk

Web: www.easterbrooks.co.uk



**We are inviting all former members
to our 10th anniversary concert on**

**Sunday 7th July at 3pm in
Whimple Church**

**We'd love to see you at the concert
and invite you to join in with a song,
details in advance, followed by a
cream tea**

*To register your interest, contact
TaleValleyChoir@outlook.com*

**making
music**

Billy Bloomfield Whimble Handyman

Window Cleaning, Lawn Cutting, Strimming, Hedge Cutting, Garden Clearance, Shed Erecting, Fence Erecting, Erection of Wooden Lean To, Fence Staining, Patio Laying, Patio Cleaning, Decking Cleaning, Decking Assembly, Jet Wash Driveways and Paths, Painting (Inside & Out), Gutter Cleaning, Gutter Renewal, Facias and Roof Repairs (10 Years Roofing Experience)



Home: 01404 822345
Mobile: 07759 466671

PEK BUILD

BRICKWORK&MASONRY

New build-extend-refurbishment-renovate
alteration-barns-hard landscape-repairs

Your friendly, reliable local tradesman

No job too small.

Telephone Mark on

822913 or

07817097721

Email - mproberts@live.co.uk

3 The Signals
Talatun Road
Whimble
Exeter
EX5 2QL



City and Guilds
Qualified



Stables and Grazing
for Horses and Ponies
Good private location
Whimble 1 mile. POA

Call John

01404 822232

The History of Whimble's Holy Well

Didn't know there was one?

Then come to a talk at St Mary's Church,
Whimble to find out all about it!



Thursday 2nd May at 7pm
by Louise Scanlan

Refreshments available
No charge but donations to the church
are always welcome

Whimble's Holy Well?

For some time, I have been researching the history of the Holy Well in Holly Ball Lane. Although only a few people remember the well today, there are features of its history that suggest it might once have had significant local importance back as far as Domesday and perhaps beyond.

If you have any knowledge of the well please do contact me on Walmsley_louise@yahoo.co.uk or 371433, I'd be very pleased to hear from you - and hopefully you're feeling curious so do come along to the talk on Thursday 2nd May to find out what's been discovered so far.

Community Theatre 4All Presents

An Open-Air Production of

Toad of Toad Hall

In the grounds of Rull House, Whimpe, EX5 2NU.

Adjacent Parking (follow the signs)



Friday 17th, Saturday 18th at 7.00pm
and Sunday 19th May at 2.30pm
**Bring your own chairs and blankets
& feel free to bring your own picnic**

Grounds open one hour before the performance

Adults £10 Children £5

Family Ticket (2 adults & 2 children) £25

Tickets on sale from 6th April from TicketSource

www.ticketsource.co.uk or use this QR code
For ticket help please contact Tom on 07979 876211



COMMUNITY THEATRE 4ALL

Both the children's group and the adult group join forces for our next production "Toad of Toad Hall"

The adult cast has been in rehearsal for this production since early January. Now they are to be joined by members of Young Community Theatre 4All who recently completed their highly successful production of "The Little Prince".

'Toad of Toad Hall' will be staged in the grounds of Rull House, on the outskirts of Whimple. The grounds provide the perfect venue for an open-air production of this particular story, the performance area being backed by woodland.

This highly amusing play, with a range of fantastic characters, and over the top situations, will appeal to both adults and children of all ages. The boastful Toad, helped by his friends, Ratty, Mole and Badger eventually becomes a partially reformed character, as he regains his ancestral home and good triumphs over bad. The dastardly Wild Wooders led by the Chief Weasel and Sergeant Sybil are sent packing from Toad Hall, their tails between their legs!

This play, written by A. A. Milne, author of 'Winnie the Pooh', was first performed in 1929 and is based upon Kenneth Graham's classic children's story 'Wind in the Willows'. We have tightly edited Milne's script and written new material to create a faster moving, slightly more modern feel to this timeless story.

On site car parking, adjacent to the performance area and portable toilets will be available.

Longfield Cattery

heated single and double chalets
personal care and attention



(now also looking after small animals)



01404 822275

stephen@longfieldcattery.co.uk

www.longfieldcattery.co.uk

Longfield ~ Church Road ~ Whimble ~ Exeter ~ EX5 2TF

AERIAL SERVICES

(Mike Cummings)

- Same Day Service Available
- 7 Days A Week
- Sales, Service, Installation
- Repairs & Reception Problems
- Digital Aerial Upgrades



- NO CALL OUT CHARGE
- FREE ESTIMATES

01392 279513 07836 641635

www.aerial-services-mikecummings.co.uk



Hilary Ceremonies

01404822581

hilarynowill@btinternet.com

www.hilaryceremonies.com

Life celebrated with joy, creativity, passion and compassion
Funerals, wedding ceremonies and naming days

I am a qualified Civil Celebrant. My role is to help mark moments in time – whether that is a farewell at a funeral, a wedding ceremony, naming day or vow renewal. Your ceremony will be unique and personal. A funeral does not have to follow a standard format and we can add personal touches to celebrate a life whether the farewell is at a natural burial ground or at the crematorium.

If you are elderly or terminally ill, I am honoured to speak with you about what you would like for your funeral and form a plan which can stay with your important papers and your family will have the reassurance that your wishes are being carried out. Sometimes it is easier to speak with me about these things than immediate family. I have a straightforward but compassionate approach.

Wedding Ceremonies are a joy, and I listen to your stories and create a beautiful day for you, including creative elements no one else will have.

Please speak with me: I have fixed fees so no surprises and work closely with local funeral directors, natural burial grounds, and wedding venues.

Hilary Nowill



Just Ten questions with Civil Celebrant Hilary Nowill

What a delightful and informative interview I had with Hilary Nowill earlier this month. She told me more about her role, and why she is thoroughly enjoying her new profession.

1. I imagine people can be unsure about the role of a celebrant, and how it differs from a registrar, or a humanist. Can you explain?

I am a Civil Celebrant and I provide largely non religious family and funeral ceremonies. I can have religious content in these, such as a psalm, a reading, or a hymn for example. But if a family would like a religious funeral, they would choose a vicar, rabbi, priest etc. A Celebrant offers an alternative, where anything can be included to make the funeral really personal, unique and very special. For example, we have had a whiskey toast around a coffin, decorated a cardboard coffin, had dancing as stipulated by the deceased and so on. You can be a Humanist Celebrant and for this you need to belong to the Humanist Society.

2. What career did you have prior to becoming a Celebrant?

For most of my working life I've worked in law firms. I had a variety of roles, from a PA, to managing a team, being in a finance department and running events.

3. How did the whole idea of becoming a Celebrant come about?

It is rather a convoluted story. After my beloved husband Julian became ill, he took early retirement. He wanted me to retire too, but I am a very independent person and I didn't want to do this at first, so I just cut my hours. However, when he got his terminal prognosis, I gave up work completely and we were in a very lucky position that we were able to do this and I am really thankful for this time together. We had some really honest conversations about his death, his funeral and what my life was going to be like after he died. He wanted me to have a sense of purpose, and I didn't want to work 9 to 5. I wanted to do something creative. On a weekend with my girlfriends in Glastonbury, I was flicking through a free magazine and there was an advert for a Celebrant. It was like an epiphany moment, as it ticked all the boxes - creative, public speaking, and event arranging. Also, I've always had a macabre fascination with death!

4. What services do you actually provide?

Most of my work consists of funeral ceremonies. But I also take wedding ceremonies, naming days and vow renewals. I'm able to be really creative with these and have wonderful elements and rituals to make the day personal. I provide whatever the couple or family wants in whatever way they want. Obviously ensuring that it is suitable and appropriate. I always let the family see what I have written, so that they are totally happy with the content, and the details are correct for such important occasions.

5. It must be a very humbling and rewarding job. What do you enjoy the most?

I qualified in January 2022 and Julian died in early February that year, so his funeral was the first event I did. That was humbling in itself, but really lovely as he had planned absolutely everything. I love the joyous occasions too, like Naming Days with whole families coming together to celebrate. I'm about to take my first Renewal of Vows ceremony which is exciting:

I have planned it so there are parts for the couple's three children to make them feel really included in the celebration of marriage.

6. What have you learned since you began this new career?

That not many people have conversations about what their life might look like after a loved one has died, which is sad. Also, 30 minutes at the crematorium seems quite brutal. It is such a short time for a farewell. So I encourage people to keep on talking about the person and not let this be the only time we talk about them. I've learned to be patient and to listen to the families. Plus, on a lighter note, I used to think that my family was bonkers but now I know that every family is bonkers in their own way!!!

7. Death can be such a difficult subject to talk about, especially when there are so many traditions and cultural differences. In this role how have you approached this?

People do have preconceived ideas about what a funeral is, due to traditions and rituals. There are a lot of taboos around death, we use weird terminology such as "passed", or "lost". I haven't lost Julian like an umbrella on the Underground!! He died and that's more final, but important to say. I often encourage relatives to write a letter to put in the coffin, especially if they've had a difficult relationship, as it's quite cathartic. If it's a cremation then it will never be unearthed or found. It is totally personal and private.

8. Obviously there are other ceremonies and activities that you offer. What can you tell us about them? As I do Wedding Ceremonies, if someone wants to make things for their wedding, or have an activity on a 'Hen Do', then I offer workshops. As many of my venues are in rural places such as barns, I help them to create willow lanterns, button holes etc. You can even make your own willow coffin, although this is a specialised craft so I don't offer this. But you can decorate a cardboard coffin.

9. As I am enjoying a new career in later life, myself, I am interested to hear what you have to say about this. Any advice?

For this job, and others, I think you need to have some life experience first, in order to have empathy. I absolutely love my job, it is the best one I've ever had. Perhaps I have more time now too, than in my previous career. I always visit the family after the funeral to give a copy of the funeral service so they can refer to it and read the beautiful tributes and eulogies. Also, now I know that I enjoy working with people who are ill or elderly. We learn more about ourselves later in life which can help us choose new career paths.

10. Looking forward, what do you see for us when we plan these ceremonies for our loved ones, or for ourselves?

We could do with more natural burial grounds. There are a few around here, but I always feel that one of the fields around Whimble would be beautiful. Planning consent is needed from East Devon Council, but I understand more burial spaces are needed. Also, a natural burial site apparently stops compulsory purchase and development in rural spaces, so it is definitely worthy of discussion.

If you are interested in learning more, or having a personal discussion with Hilary, then you can contact her on: hilaryceremonies.com, hilarynowill@btinternet.com or on 01404 822581

Sarah Thackeray



the Jack *in the* Green

Changing of the Guard!

We're thrilled to have begun an exciting new chapter in the Jack's proud history. A huge thank you to Paul and Judy for all their support and kindness over the years and the opportunity to continue an epic journey - we couldn't have asked for a more revered or cherished Devon dining institution to now call our own. With 22 years of service here between us, our ambition is to enhance the Jack's proud national reputation whilst also adding thoughtful new touches to its famous brand of warm and generous hospitality.

Think of us as your special place to get away from it all. Drop in for a pint and a bar snack if that's all you fancy. Or try our tasting menu for a more sophisticated experience. Ask about our new loyalty cards and have a drink on us. Sunday is feast day and our roasts are legendary with additional fish and vegan options and over 20 wines by the glass. Just pick a time that suits - we serve food all day until 8.30pm. When summer finally arrives, dine al fresco in our walled courtyard with full table service. A blaze of colour, it's also a great place to meet up for drinks and a chat. Dogs are welcome outside.

If you've been to us before you'll know the Jack is a tardislike venue and we can adapt to whatever you need us to be; somewhere for relaxed everyday dining or glammed up for an unforgettable special occasion. Whether it's a party for 80 guests, an anniversary meal or milestone birthday, a celebration of life, corporate meeting or a working breakfast, we apply the same level of care and attention to each.

What's coming up? As part of our ongoing support for Force Cancer we're getting involved in 'The Nello' on 30th June, starting and finishing at Topsham Rugby Club. This year marks the 25th anniversary of the annual charity bike ride and both Miranda and Anya will be undertaking the 100 mile route out across Exmoor to help raise money for Force Cancer. As well as personal sponsorship, there will also be a special Jack voucher for everyone who takes part from which we will donate 10% of their bill to Force. The Jack meanwhile will be represented at one of the pit-stops, with Craig cooking up some carb-rich pasta at Nomansland cricket club near Tiverton to help cyclists refuel.

If you'd like to take part yourself, please visit: www.forcecancercharity.co.uk/nello/ We'll be posting more details soon on how you can sponsor us via facebook and instagram and through our email newsletter.... you can subscribe to that via the homepage on our new website.

Craig and Miranda

PEST CONTROL DIVISION



KIERON 07977 648791



email: greenrockgap@gmail.com

 **ABACUS**
Stone Conservation

**Masonry & Conservation
Specialists**

Repairs to Listed
and Historic Properties
Traditional Lime Mortar Repointing
Brick Repairs - Walling

Clyst St. George, Near Exeter

Tel: 01392 879824 Mob: 07825 698507

Email: info@abacusstoneconservation.co.uk

Web: www.abacusstoneconservation.co.uk

Window Cleaner

High reach hot water system

Frames and doors all in

Gutters/Fascias Cleaned

For that personal service

Sean

Harris

814963

07737 419077



©2011 Clippings.com

Avalon

PLANNING & HERITAGE

Avalon provides advice on an array of planning and historic building issues, adding value to larger or more complex projects, providing a bespoke service to suit any requirement.

Whether you intend to construct a new building(s), expand your current site, adapt an existing structure or evaluate an investment opportunity, it makes sense to consult a professional who shares your aspirations.

11-15 Dix's Field, Exeter
01392 581150 (also in Whimble 823617)
07979 518976

murray@avalonplanning.co.uk

www.avalonplanning.co.uk

Shelley
Spry



Tale Valley Care

Unit 6 Lees Meadow
Talatun EX5 2SG
info@talevalleycare.co.uk
07873 240459

Providing Personal Care Services in your home

Other services offered include:

- Washing
- Ironing
- Shopping
- Driving to appointments
- Chaperone

NVQ qualification in lead adult care
Insured and DBS checked

Apsleys

CHARTERED
ACCOUNTANTS

Accountancy
Taxation
Payroll
Probate Services
R&D Tax Credits
Corporate Finance
Company Secretarial

tiverton@apsleys.com
01884 257725

A Window on Whimble's Weather – January/February 2024

Welcome to the first weather report of 2024 from Whimble's two weather stations.

Slewton Crescent Weather Station: <https://bit.ly/35qwR9K>

Cobden Lane Weather Station: <https://bit.ly/3bt3FTf>

Live and historical data sets are available for each station, through the links, above.

January – Storms **Elin**, **Fergus** and **Gerritt** brought 2023 to a wild and windy end. This theme continued well into January with storms **Henk**, **Isha** and **Jocelyn** and brought the total number of named storms so far this season, to 10. There were just 2 in the 2022/2023 season. Whilst there is no long-term indication of a pattern of the number of storms increasing each year; their intensity, does seem to be. Storm Henk, in particular, packed high winds; gusting to over 80kph on the 2nd; causing widespread damage (including almost total destruction of my greenhouse!!). Exeter airport recorded its strongest gust of 130kph making it the windiest day since 1990! Following on from Henk there was a period of extremely wet weather on the 3rd & 4th, with 21 mm rain – over 40% of the total rainfall for January; resulting in 586 flood warnings issued nationally and substantial flooding around Whimble.

Despite this, total rainfall for the month, of 53.8mm, was well below the monthly average. Between Henk and Isha there was a clear, mostly sunny and very cold spell from the 5th to the 20th, with nighttime temperatures falling to almost -8°C on the 18th. Sunshine for the month was 31% above average.

February – continued the mild, cloudy mostly stable weather seen at the end of January. However, heavy rain on 5 days of the month gave a monthly total of 145mm well over double the average for February; the wettest day being the 25th with 19mm and yet more flood alerts. As a result of a generally cloudy month; February had only 72% of the average sunshine. Temperatures for February were substantially above average, making it one of the warmest on record.

2024	January	Date	February	Date
Warmest Day	14.0 °C	23/01/2024	14.6 °C	15/02/2024
Coollest Night	-7.9 °C	18/01/2024	-1.6 °C	27/02/2024
Windiest 24hrs	68.7 km/h	02/01/2024	36.7 km/h	06/02/2024
Wettest 24hrs	17.3 mm	04/01/2024	19.6 mm	25/02/2024
Av. Maximum	8.9 °C	N/A	12.0 °C	N/A
Av. Minimum	1.2 °C	N/A	5.1 °C	N/A
Total Rain	53.8 mm	N/A	145.8 mm	N/A
Total Sunshine	49.4 kWh/kW	131.6% of Av.	38.1 kWh/kW	72.3% of Av.

Note: Wind data is from Cobden Lane, while other data is from Slewton Crescent.

Phil Dominy & David Brewer. Please send any comments / questions to dominypr@hotmail.com

Always FREE delivery
to Whimble
(no min. order value)



Have you tried our
NEW 'Devon Dapple'
cloudy cider yet ?



Traditional, Cloudy, Fruit and Low-Alcohol

CIDER - available in bottles,
3L pouches and 20L bag-in-boxes.

APPLE JUICE - still and sparkling

From our ancient
Whiteways Orchard in Whimble

THE EXE GIN
Grumblebee Honey Spiced Rum



Order online:

www.courtneysdrinks.co.uk

01404 890093 (Mon-Fri / 9am-5pm)

Also available at:

Jack in the Green, New Fountain Inn,
Whimble Cricket Club and Whimble Stores

'Whimble's very own drinks producer'



Scan me to order



Believe me, if we have any more rain I shall be looking on that Youtubey thing to see how to build your own ark. It's been done before. I ask myself 'do I need to go out in this rainstorm or could I just stay at home and watch another rerun of Downton Abbey?' I know, it's sad.

An advantage of afternoon meetings is it's never a chore to brave the elements and go to our WI. I might be windblown or rain soaked but there is always a cheery welcome and that warms your cockles.

Such was the feeling in January when we welcomed two members of the Devon Freewheelers to our meeting. We hoped they would roar up on their motorbikes, but the weather decided otherwise. It was interesting to hear of the various services this charity offers. Carrying not just blood, but breast milk and where necessary, patient's notes within the Devon community. Where urgency is the key, they will travel to county lines to hand over patient's notes as part of a relay to the designated hospital. The Devon Freewheelers is a vital and valued lifeline to the NHS and our WI ladies generously added over £120 to their collection bucket. Fabulous!

Sometimes Plan B is needed and this was the case for our February meeting. Our speaker reluctantly cancelled the day before due to a worrying family issue. These things happen and so rather than try to recruit a last minute speaker, we decided on a beetle drive. Brilliant! It was noisy, furious and so much fun with Gill being the overall winner. There was also a last minute quiz with some very random questions. Here's one. What do you call a group of pandas? Answer at the end of this piece.

Our 12th March meeting saw us visiting some Commonwealth war graves through our speaker, Tim Stoneman. His talk was entitled 'Gardening the World'. We had a fascinating and enlightening talk.

9th April we will be on a Stairway to the Stars through the eyes of Jon Bell, an Exeter Red Coat. It will be an illuminating and out of this world talk. Ha Ha!!

We have already enjoyed two lunches and a lunchtime skittles match with several trips and events planned, going forward. Never a dull moment in your WI.

Well that's it and if I have fired your enthusiasm, then call Marilyn on 01404 821860 for more information. Oh a group, herd or flock of pandas is actually called an embarrassment. No really! Who knew? Until next time.....

Di Eden

WE KNOW WHO WANTS
TO LIVE IN YOUR PROPERTY



ASK FOR A FREE VALUATION

FOR FRIENDLY AND PROFESSIONAL
ADVICE CALL US ON 01404 814306

www.redfernsproperty.co.uk



Zoopa.co.uk

Lee Maddicks

David Drew

WARTS

DATES FOR YOUR DIARY:

Monday 15th July 2024

Monday 14th October 2024

We would kindly remind you:

ALL ORDERS FOR OIL SHOULD BE PLACED AT LEAST
ONE WEEK BEFORE THE ABOVE ORDER DATES!



(Minimum order: 500 litres. Please allow a further 10 days for delivery)

All existing (and potential new) members with access to e-mail may contact Graham Batten with their order/*registration at gkbatten@btinternet.com.

If you are without email you may call 01404 823317

*Registration to include: Name/Address/Postcode & Telephone Number

Ley's Aerials

Tel: 01404 821611

Mobile: 07866 464411

E-mail: leysaerials@gmail.com

Chris Ley

Nuttaberry, Church Road

Whimpe

EX5 2TA



- Aerial & Satellite Dish Installations & Repairs
- Freeview & Freesat Reception Solutions



Book Online at: www.leysaerials.com

WHIMPLE HERITAGE CENTRE



We are delighted to unveil our new logo, which has been designed for us by long time Whimple resident, Kiko Keighery. Kiko is a talented musician as well as artist, who has recently completed both undergraduate and postgraduate degrees in music at Durham University and is now a member of the Ivies band, an indie pop group. They have been enjoying success with their singles *Sick for a Week* and *Semi-detached*, so do look out for them. It is lovely to be able to celebrate some home-grown Whimple talent!

It has been a busy winter at the Heritage Centre, changing our displays ready for our

summer opening on 1st April. The centrepiece of our new wassailing display is a piece of film footage of a 1927 wassail which is great fun to watch and we are very grateful to local musician, Jim Causley, for giving us permission to use his recording of the Wassail Song as a soundtrack to this.

We have also added to our Muffin the Mule display with new display boards including one focussing on the puppeteer, Ann Hogarth and her husband, Jan Bussell. We are very grateful to the Creative East Devon Fund for funding both this project and the licence to show the wassail film through the UK Shared Prosperity Fund.

In addition to the above we have new displays about World War II and, in particular, the Women's Land Army training centre at Whimple House Farm and dairy farming especially the manufacture of clotted cream in Whimple. We have enhanced many of our other displays, so do come and take a look. Our first day of opening is Easter Monday 10.30am-4pm, and after that we are open on Wednesdays 1pm-3pm and Saturdays and Bank Holiday Mondays 10.30am-4pm.

We welcome young visitors to the Heritage Centre, and have two free children's quizzes aimed at children up to 6 years, and 7 - 12 year olds respectively. Our younger visitors will also enjoy the displays of Muffin the Mule memorabilia, toys based on Whiteway's vehicles and a small new display of other twentieth century toys.

Our shop is a great place to look for gifts, cards and wrapping paper and will save you a trip out of the village. We have a new line of fridge magnets based on an early twentieth century Whiteway's advert, and hope to be rolling out some merchandise using our new logo later in the summer.

Finally, back to music again! Our last talk of the season is a talk with a difference as it will be illustrated with music rather than pictures. It is a joint project between ourselves and Whimple Parish Church titled *The History of Church Music in Whimple and the Surrounding Area 1770-1860* and is being presented by the West Gallery Quire of Crediton.

They specialise in researching the music that would have been played in Devon churches before the Ancient and Modern hymnbook was published, so come along and hear the sounds that would have echoed in Whimple's church in days gone by. The talk takes place in Whimple Church on Saturday 20th April and starts at 2pm. Entry is free to all but donations will be much appreciated to be divided equally between the History Society and Church. We look forward to seeing you there!

Tina Kelly

An Appeal – New Secretary needed

After more than 23 years of sterling service, our secretary, Roger Smith, resigned with effect from the end of March. We therefore need someone to replace him. The secretary is one of the key members of the management committee, being responsible for keeping the minutes of meetings, writing the newsletter, and dealing with correspondence relating to the Society. In addition, and as a committee member, Roger has been involved in organising events such as our winter programme of talks and the wassail to name but a few. He has kindly agreed to continue organising the members' Christmas lunch.

If you are interested or would like more information then please contact us through our website www.whimple.org or by telephoning 01404 822499 and someone will get back to you.



Rochelles' Curtains, Blinds and Foam

Phil-kendall@hotmail.co.uk
07525 618286 (Phil)

**We come to you
for measuring, quoting and fitting**

Made to measure Curtains and Blinds
Wide selection of fabrics
Tracks and poles
Fitting service
Free measuring service
In-house making service
We also make with your own fabric
We make covers for foam cushions

FOAM cut to size for upholstery/caravans/boats etc.
Revive old furniture
Upholstery foam/Closed cell foam/Memory foam toppers
Polystyrene bead for bean bags

LOVELY VENUE
with
PARKING
&
UNDERFLOOR
HEATING

YOGA

WITH SARAH



**TUES 6.30 - 7.40pm (evening unwind)
THURS 9.30 & 10.45am (morning flow)**

at

**THE HUB, WILLOW VIEW PARK,
STRAIGHTWAY HEAD, WHIMPLE**

Suitable for all levels

£9/class or 6@£48

Contact reviveguernsey@gmail.com

07591 599162





the mindful gardener

*What business do I have
in the woods if I am thinking of
something out of the woods?*


Thoreau

 Mindful maintenance of
the garden you have
created

 Mindful planting schemes:
transforming your desire into a design
that works for its purpose

 Mindful of your current
wishes for your garden

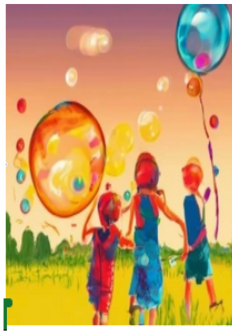
 Mindful of the
environment

 Mindful attention
to special plants

 Mindful of
biodiversity

....giving you peace of mind

For more information contact Elaine Nicholas 07917386254 elaine@danublu.org.uk



WHIMPLE FEST 2024 29 JUNE 12-5.30pm

HERE ARE SOME UPDATES for Your COMMUNITY FUN DAY on THE PARISH FIELD

- We now have over **20 CARS & RURAL VEHICLES** on display - a great attraction.
- Our **MUSIC LINE-UP** is almost complete with a great blend of musical genres
- **NEW** this year is a **BABY/TODDLER CHILL AREA** with nappy changing facilities & some large toys for toddlers.
- **FACE FANTASY FACE PAINTING**, plus **CIRCUS SKILLS, CLIMBING WALL, REMOTE CONTROL CARS, MR BUBBLES** and more fun for all the family
- In the **WELLBEING ZONE** visit several therapists offering a range of mini treatments



- **POPULAR TALKS** and **ACTIVITIES** in the **CHILLOUT TENT**
- **NEW FOOD EXPERIENCES** with locally sourced vegetarian and BBQ delights
- **UPDATED SELECTION** from the **BAR** including popular beers and ciders

FINALLY, we still need to hear from you if

- your community group would like a stall in our COMMUNITY HUB
- YOU CAN HELP IN ANY WAY e.g SETTING UP/ON THE DAY/CLEARING UP
- YOU CAN SPARE JUST ONE HOUR contact sue.turner1@sky.com
- you can provide raffle prizes to go towards our infamous themed hampers (These can be dropped off at THE PEA) Contact tallulahmahoolah@btinternet.com



SAVE THE DATE IT'S GOING TO BE GREAT



Whimble Cricket Club

Whimble Cricket Club

Those of you involved in the club or who take advantage of the facility for dog walking and exercise, will know that we are at the time of the year when we need the weather gods to be on our side. With cricket dates coming up from late April (see dates below) we need the rain to stop and the sun to come out so the ground can dry out. I hope that by the time you are reading this, that has been the case. I think I say this every year but it is set to be a bumper summer at the club. Whimble teams are involved in 130 games, with 78 being played at home. We have 12 Friday night junior sessions, 8 All-Star sessions, and 1 egg catching night. We will again be running disability cricket sessions in May and August. We will also welcome Devon age-level teams to the club through the summer.

Women's cricket goes from strength to strength

2024 is set to be a landmark summer for women's cricket. Having started late last year, the women's softball squad has competed at indoor tournaments through the winter and is set for a first full summer of training and games. Our first two planned weekends are all about women's cricket. On Sunday 21st of April we host a women's league hardball game, Topsham Ladies v Exmouth. We've come to this arrangement to host two league games this summer as many of our young lady cricketers play adult hardball at Topsham. One week later, on Sunday 28th, we are due to host a women's softball festival. I sincerely hope those dates can go ahead.

Help us run our busy summer

With such a busy program, we are again (and always) on the lookout for new volunteers and helpers. There is plenty to be done - on the field with coaching, umpiring and scoring; and off the field with admin, bar work and more. If you can spare some time to support the club, please get in touch. We are also always keen to welcome new sponsors for match day, player sponsorship and other opportunities. Sponsorship details are on our website and start from as little as £25.

Welcoming Fraser

Fraser Campbell, our New Zealand overseas cricketer for 2024, will be arriving in Whimble late April. He will be staying in the village and will be part of our community for the summer. Please help give him a big Whimble welcome and help us support his time in the village. We want him to make a great contribution to cricket, but also to enjoy his time in East Devon.

Follow us and come and enjoy the club

The very best way to follow everything we are doing is social media or to become a social member and receive our email updates. You can sign up for social membership over the bar when the season starts. We welcome everyone up to the club and the

bar will be open for weekend games with Courtney's Ciders and Oggy Oggy pasties and sausage rolls. In the meantime, here are some of our main upcoming dates to whet your appetite

- Sun 21st April - Topsham ladies v Exmouth (Women's league)
- Fri 26th April - Junior training begins from 6pm
- Sat 27th April - 1st XI pre-season friendly v Ottery St Mary
- Sun 28th April - Women's softball festival day
- Sat 4th May - league cricket stars (2nd XI at home v Bideford)
- Fri 10th May - All Stars begins
- (Fri 31st May - no junior training due to half term)
- Mon 26th August - Whiteways Cup
- Sat 7th September - 12th Man Festival
- Sat 2nd November - Bonfire and Fireworks

Contact: **James Woolam**
jameswoolam@gmail.com



SARAH JANE'S
UNISEX HAIRDRESSERS • WHIMPLE

Open Tuesdays to Saturdays from 9am

**To book an appointment ring 01404 823400 or 07494 365547
or book through my Facebook page**

New Inn Cross, Whimble EX5 2TT. Tel 01404 823 400



Your Mortgage Specialists

Experts Since 2007

We can help you with...



5* Reviews | Google & Facebook

01404 813050

info@exemortgages.co.uk

www.exemortgages.co.uk

The Milking Parlour, Clapperentale Farm, EscotPark, Ottery St. Mary, Devon EX11 1LU

Your property may be repossessed if you do not keep up payments on a mortgage or loan secured against it. Exe Mortgages Ltd. is authorised and regulated by the Financial Conduct Authority (FCA). We are registered under the Consumer Credit Act & Data Protection Act and hold the appropriate licences. Exe Mortgages is entered on the Financial Services Register under reference 7025240.



Trusted Tech

Reliable IT Support Services

Slow computer?

Unreliable internet connection?

Looking for friendly, one-to-one computer tuition?

Trusted Tech can help!

Contact us today!

07989 708629

william.grimsley@trusted-tech.co.uk

www.trusted-tech.co.uk



S.W Podmore

Podmore building services

25+ years experience

Local and reliable

Most aspects of building work undertaken

Small plumbing jobs

Call for a free quote or advice

Shane 07943211869

shane.podmore@gmail.com

Looking after your trees and
gardens for over 25 years

Sid Valley Tree Surgery & Landscapes

TREE SURGERY
HEDGE CUTTING
STUMP GRINDING
GARDEN CLEARANCE
FULL LANDSCAPE SERVICE
FREE QUOTATIONS



Tel: **01395 519856**

Mobile: **07880 797613**

www.sidvalleytreesurgery.co.uk



James Brewer Quality Made Joinery

Ellicombe House
Cutteridge Lane
Whitestone, Exeter EX4 2HE
Tel: 07896 530640
Fax: 01392 811604



Email: jbrewer2410@hotmail.co.uk

(not VAT registered)

*Please contact me for all
your carpentry and joinery
needs, i.e. doors, windows
and furniture, I will be
pleased to give you a
quotation.*

darren peek plastering contractor

plastering and rendering,
dry-lining, coving,
cob and lime specialist,
floor-screeds,

mobile 07786514172

tel 01404 41211

darrenpeek2@aol.com



Protect our Whimble & Rockbeare Group

April 2024

www.powr.live

Email: contact@powr.live

In the Neighbourhood Plan village questionnaire in 2022, we asked ‘what brought you to Whimble’? Nearly 80% of responses was **Village Lifestyle**. Second most significant was housing, which was indicated by a 30% response. Other comments included: village amenities, associations with the area and the school, with a few citing transport links (trains), and a few were born here.

I have no statistics on this, but I feel that once you come to Whimble you want to stay and work towards making this ‘your’ village, wherever possible protecting the village from inappropriate development. During our time drafting the Whimble Neighbourhood Plan, there was a vast list of organisations, clubs and societies to consult with. These groups enhance the quality of life for those living in our village.

POW+R Group came to exist in early 2019, due to the lack of action in challenging the eastward expansion of Cranbrook. We took the view that a more organised and co-ordinated approach was needed. A team was gathered together and at each development stage of Cranbrook, POW+R Group submitted objections. This included a 50-page report on what was defective in the plans, including housing east of Cobden Lane. We also wrote a 20-page objection to the Gribble Lane estate, within a heritage landscape. POW+R group members attended several of the hearings on the Cranbrook expansion at Blackdown House, and online via Zoom, and made a significant number of objections. This was our method of ‘attack’.

POW+R was also keen to ‘defend’ the village, and knew that the best way to do this was via the legal framework of a Neighbourhood Plan. The Parish Council hoped to get going with drawing this up via the creation of small Sub-Committees of enthusiastic volunteers. Covid, however, hampered these efforts and the Sub-Committees were disbanded whilst the pandemic took hold. POW+R group knew that many parishes all over East Devon had completed their Neighbourhood Plans but at this point, Whimble had a long way to go. We knew we had the skills across a wide range of subject areas to be able to organise and draft the plan, so we put forward our approach to getting the task done at a WPC meeting on Monday 23rd August 2021. We prepared a strategic plan for the design, development, creation, approval and implementation of the Neighbourhood Plan for the Parish of Whimble. This included a draft Project Plan and a Framework. This was agreed at the next Parish meeting on the 20th September 2021, and a Whimble Neighbourhood Plan Group was formed which included Cllr. Denise Dearden, Cllr. Sarah Johnson and myself from POW+R Group.

Before compiling the village questionnaire, POW+R Group members read a large number of local Parish NPs in order to seek ideas and information.

Now our task was to organise the Parish NP Meeting and complete a questionnaire to form the 'Village Survey.' A draft was completed and sent to Stuart Todd, the professional Planner engaged by the WPC, who advised us to do a sample test run. We had two methods to complete the survey – digital online or hard copy. This led to the Village NP weekend on the 12th and 13th February 2022, with a marketing strap line – 'We Love Whimble', as it was close to Valentine's Day!

All the comments that were made that weekend were recorded and have fed into the Whimble Neighbourhood Plan, plus the analysis from the questionnaire, with help from Bob Day, IT expert.

The next task was to allocate sections of the WNP to the Parish Council and members of POW+R Group with relevant expertise. All were aware of the need to link in the National Planning Policy Framework and the EDDC Local Plan (2016).

In the meantime, POW+R Group were also active in protecting our local pub, the New Fountain Inn. The developer criticised the complaints from the village and POW+R Group gave rebuttals to each point. The appeal was not allowed and it's great to see the pub re-open.

There is no doubt that creating the WNP was a massive task involving 100's of hours of time between the group members, and has taken almost three years to get to the point where the first draft is almost complete. Regrettably, POW+R Administrator, Helen Badley, had to step down, which meant that the master copy was handed down to me and the NP Group to complete. Sections 1-14 were completed by POW+R group. Sections 15-17 were the responsibility of the Parish Council but have not been started as far as I am aware.

This will be the last update on the Whimble Neighbourhood Plan from POW+R. The Parish Council wish to take the plan forwards without assistance from POW+R to reach its conclusion, and hopefully be ratified by the village in due course. It will be for the Parish Council to regularly update the village on progress and to keep villagers informed of any events that need to occur in order to ratify the NP.

I am extremely proud of the tireless work that I, along with the POW+R team, have put into the Neighbourhood Plan to-date. It is a shame that we were not informed of or involved with recent discussions between Angela King, Snr. Planning Officer (NP), Parish Councillors and our local District Councillor. I am sure they must know that the Draft WNP is 95% the work of POW+R Group. It feels as if '*something is rotten in the state of Denmark.*'

POW+R Group wishes the Parish Council well with the completion of the Neighbourhood Plan. Our wonderful village has waited long enough for it and we cannot wait to see it ratified!

POW+R lives on, as the eyes and ears of Whimble and to always protect our special village.

Alan Lascelles MA

POW+R Group – Press and Publicity Officer



Your Personal Assistants

A niche group of personal assistants set up to provide top quality care and support.

Mobile: Poppy - 07786392480

Email: saskialayburn@poppycare.org



Care, Compassion and Commitment

Dedicated farm and companion animal vets and nurses,
caring for your livestock and pets
24 hours a day



Cullompton
01884 35558
Tiverton
01884 258585
Honiton
01404 44095
Uffculme
01884 841317



www.valeveterinarygroup.co.uk



PLANET SAL FOR GIFTS AND CARDS WHICH ARE A BIT 'UNUSUAL'

(Like the owner..)

3, BLACK LION COURT,
HONITON EX14 1ES

01404 45777

OPEN MON 11- 3

TUES-SAT 10- 4.30



Covering Exeter and surrounding areas.



☎ **07496 961 255**

f **DE Window Cleaning Services**

"FREE GUTTER CLEAR"

IF YOU SIGN UP TO A REGULAR WINDOW CLEAN

LIMITED TIME ONLY DEAL

CALL US TODAY
07496 861 255

PROFESSIONAL, RELIABLE & FULLY INSURED



Terms & Condition Apply:
Free gutter clean on your 7th window clean

If you are not 100% satisfied with any of our services, simply notify us within 24 hours and we will return & re-do any unsatisfactory work- it's our promise to you!



RJ Spellman

Renovation & Property Maintenance

.....

Carpentry & Joinery

Kitchen Fitting & Remodelling

Wardrobes & Fitted Furniture

Window & Door Fitting

Plastering & Painting

Fully Insured

.....

For a free quotation or advice please get in touch

e: rjspellmanrenovation@gmail.com

w: rjspellmanrenovation.co.uk

t: 07511 533 765



PF&A

PREMIER FENCING & ASTRO

**QUALITY FENCING & ARTIFICIAL GRASS
AT PRICES YOU CAN AFFORD**

EXETER • 01392 341 315

EAST DEVON • 01395 205 563

info@premierfencingandastro.co.uk

www.premierfencingandastro.co.uk

FENCING ■ DECKING ■ GATES
ARTIFICIAL GRASS ■ LANDSCAPING



As mentioned in the last edition of the News, we started the year with our AGM, which once again was very well attended. We were able to reflect on another successful year with all the events that were organised well supported and very much enjoyed by all who attended them. All the principal Officers were re-elected which gives us good continuity for another year. However, it was again recognised that we need to encourage new members to the Club and hopefully to the Committee to ensure its future success.

With Doreen Staddon standing down from the Committee, we are still seeking someone to take over from her to help with the very successful coach trips that she helped to organise. Without this help, we may not be able to run any trips this year. Therefore, we are still hoping that someone will be able to take over this role from her. Following the meeting we were treated to a presentation of the Flora and Fauna on Madagascar which was very kindly given by Andy Bratt. This was a very colourful and wonderful insight to some of the plants on the island and also the magnificent lemurs! We are very grateful to Andy for putting this presentation together for us.

For our first main event of the year, on Friday 15th March we had another talk from Andrea Rye who is currently the Plants Manager at the Combe Garden Centre in Honiton. The talk this year was on The Spice Trade and was very interesting entertaining, as was her very well attended talk last year, .

Our annual plant sale will be on Saturday 18th May in the Village Hall from 2.30pm to 4.30pm. Once again, the weather seems to be setting us a challenge to prepare the plants for the sale. We hope to have all the usual plants available and hopefully the spring weather will have arrived by then to help us grow all the plants we hope to have on offer! As those of you who have attended in the past will know, this is now a very popular event and arriving early is to be encouraged, if not essential, to get the bargains on offer!

Our Annual Flower and Craft Show this year will be held on Saturday 10th August 2024. We have nearly finalised sorting out all the classes for this year's Show Schedule and we hope to have copies available at the plant sale. However, for those of you who are keen photographers, here is the list of topics for this year's show: "Insect Life"; "Wild Flowers"; "From the Veg Garden"; "A Wonderful Window"; "Magnificent Trees"; "Animal Magic"; "Beside The Seaside" and "A Rusty Object". Hopefully these are topics that will appeal to you all and we look forward to seeing the entries!

We do have plans for other events this year, and details of these will appear in future editions of the News.

Paul Wilson,

Chairman, Whimple GC

Devon's countryside is under threat

Now more than ever



You can help protect it.
Join us today.

DEVON **CPRE**

The Voice for Devon's Countryside

01392 966737
devoncpred.org.uk

A charitable incorporated organisation with registered charity number 1175228
A member of the National CPRE network

A Spring Concert

featuring the double musical treat of:

The Wyndham Singers

from Kentisbeare

&

The Stuart Singers

from Minchinhampton, Gloucestershire

St Andrew's Church, Cullompton

7pm Saturday 20th April

Tickets: £12

from: David Ball 07962 401408

or email:

info@wyndhamsingers.org.uk

All proceeds in much-needed aid of HOSPISCARE



WHIMBLE TENNIS CLUB

Your own private court near the centre of the village

- Low-cost membership
- Members only
- A well-maintained tarmacadam court
- Regular social sessions
- On court booking system
- Coaching available
- We will be having an open evening with barbecue in May for the start of the season - date to be confirmed
- Another open day at the weekend during Wimbledon fortnight with a barbecue will occur - date to be confirmed

Contact Viv Brown on 07876653264 or email whimbletennis@gmail.com for more details

SHORT MAT BOWLS



We play Short Mat Bowls every Wednesday at 7.00 pm. We are looking for new members to join us please. Come along to the Victory Hall. You will be very welcome. Bowls can be provided.

David Rastall.



WHIMPLE

PRIMARY SCHOOL

It has been a busy couple of months here at school. All of our Year 5 and 6 children were lucky enough to listen to the Bournemouth Symphony Orchestra at the Great Hall, Exeter University. The Year 5s have been taking part in weekly dance workshops to put on a show with other schools across the Exe Valley Federation at the Barnfield Theatre later this month. All classes were involved in a Chinese New Year dance workshop. Our Year 6s were involved in a walk around Silverton in preparation for possible participation in the Exmoor Challenge. Willow Class have had a visitor from Exeter Synagogue to tell them about the synagogue and show them a range of Jewish artefacts. Our children in our two younger classes participated in a Compost and Growing workshop. Beech Class had a morning at the Heritage Centre to support their learning in History and Geography. The year 5s have been on a residential, some pupils attended a maths challenge day, and everyone took part in World Book Day and Comic Relief! (more detail below) Alongside this, of course, there has also been the day-to-day curriculum subjects. It is absolutely amazing what gets crammed into a school day and I have to thank my staff team for all their efforts towards helping all these things happen.

Mrs Carole Shilston, Headteacher

Year 5 Residential



The Year 5s had a successful trip to Bath and Bristol on their residential from February 21st to 23rd. This included all the year 5 children from across all seven federation schools. They enjoyed a visit to the Aerospace Museum, where they got to pop onto Concorde, before heading to the Bristol Hippodrome to see Wicked. This was an amazing show with amazing singing, acting and dancing.

We stayed at the Bath Youth Hostel for the two nights and on the Thursday, we learned a lot about The Roman Baths by doing a range of group activities, including analysing artefacts, acted as archaeologists, built bridges out of blocks, designing mosaics.

Then on Friday we ate breakfast, packed up and headed over to SS Great Britain to find out more about this fantastic ship by having a tour of first-class quarters, the kitchens and steerage, complete with realistic smells from the time. Everyone behaved really well and made the most of these lovely opportunities.



World Book Day



The children all came to school on Friday 8th March dressed as a book character. Six authors were chosen through the School Council: Eric Carle, Roald Dahl, Michael Rosen, Michael Morpurgo, Simon Mugford and J K Rowling. A special assembly was held where sections of some of their stories were read before characters from each author paraded around the hall for us all to identify. The staff did a brilliant job of creating the food, caterpillar and butterfly to retell Eric Carle's Hungry Caterpillar.



Comic Relief

Following on from World Book was Comic Relief. To help support this event and raise money for charity we all dressed up again but this time either as superheroes, Mr Men and Little Miss Characters, all in red or in a costume that makes us laugh – this included crazy hair! Again, the children were well supported by their parents and we had an amazing range of attire adding some joviality to a dreary March.



Colyton Maths Day

A group of 12 year 4 and 5 children were invited to attend a Maths Challenge Day – ‘Mathsterpiece’ at Colyton Grammar School. Throughout the day they participated in a range of challenges set by the schools Sixth Formers.

Activities included Code Breaking using a Caesar cipher, tessellations and finding out how to produce their own, Braille in maths, aerodynamics to produce and fly paper aeroplanes, various puzzles and problem-solving and The Hive game to encourage critical thinking whilst practising their times tables. A good day was had by all.



Gas & Oil boiler repairs
Safety certificates
Servicing
Installations



FlameFix™

A local company providing
a personal service

Call Jules

07883 037667

Visit us at www.flamefix.co.uk
and read why customers say
we're highly recommended

Oftec registered
Gas safe registered



FIRE SECURITY

UK LIMITED

Fire detection and alarm systems

**INSTALLATION, COMMISSIONING
& SERVICING**

Maintaining all types of fire alarm systems

- Domestic, commercial & industrial
- 18 years of experience
- Emergency repairs and fault finding
- Fire certificates
- Design and supply complete systems
- Schools, lets, small/large properties

Contact Chris for a free quote

07875 841288

info@firesecurityuk.co.uk
www.firesecurityuk.co.uk

Organisations in Whimble

Devon County Councillor (iain.chubb@devon.gov.uk)	
Iain Chubb	07932 459595, 01297 35468
East Devon District Councillor:	
Todd Olive (toddolive@eastdevon.gov.uk)	07925 847933
Parish Council (whimbleparishcouncil@gmail.com)	
<i>Chairman:</i> Alan McArthur (cllramawpc@gmail.com)	01404 823079
<i>Clerk tbc Parish Council:</i> Amy Tregellas	
Primary School (admin@whimble-primary.devon.sch.uk)	
<i>Headteacher:</i> Carole Shilston	822584
<i>Chair of Governors:</i> Jackie Enright	
Whimble School PTA (Whimble.pta@gmail.com)	
St. Mary's Church	
<i>Parish Priest:</i> Rev. Marc Kerslake	822525
<i>Impact Cell:</i> Helen Bowker	823193
<i>Bellringers:</i> Marianne Randall	07834 809270
Book Group	
Tanya Mooney	823326
Cricket Club (jameswoollam@gmail.com)	
<i>Booking Secretary:</i> James Woollam	07989 234372
Football Club	
<i>Chairman:</i> Victoria Kendrew	07966 550260
<i>Secretary:</i> Lee Wheaton	077341 52120
Front Row Club	
<i>email:</i> frontrowclub@gmail.com	
History Society	
<i>Chairman:</i> David Rastall	822486
<i>Secretary:</i>	
Over Sixties Club	
<i>Chairman:</i> Arthur Iball	822905
<i>Secretary:</i> Beryl Iball	822905
Pre-School & Toddler Group (www.whimblepreschool.com)	
<i>Chair:</i> Joe Pearce	823512
<i>Information:</i> Jo Sibley 07794 652549 or admin@whimblepreschool.com	
Recreation Trust	
<i>Knowle Cross Sports Ground:</i> Roger Smith	822244
Scout Group	
<i>Group Scout Leader (and Marquee Booking):</i> Alex Spry	822844
Table Tennis Club	
Chris Beer	07787 544192
Tennis Club	
<i>Secretary:</i> Viv Brown	07876 653264
<i>Treasurer:</i> Glenn Starkey	07967 698600
Victory Hall	
<i>Chair:</i> Sue Ayres	823082
<i>Secretary:</i> Di Wilkins	758459
<i>Booking Sec:</i> Ali Tierney	07778 681280
Whimble Fest	
<i>Contact:</i> Sue Turner	sue.turner1@sky.com
Whimble and District Gardening Club	
<i>Chairman:</i> Paul Wilson	822744
Whimbletons	
Cathy Bartlett-Horwood	823944
Womens Institute	
<i>President:</i> Sarah Hogg	822886
Whimble and Broadclyst Young Farmers:	
<i>Chair:</i> Hannah Gray	07841 913776
<i>Secretary:</i> Ceci Brayley	07494 751675

The Whimple News Team

Editor

Samantha Upton 07375 994204
samanthaupton02@gmail.com

Production

Bob Scanlan 07845 325532
bob@bobscanlan.co.uk

Sally Wilde 823246

Sarah Thackeray
sarahthackeray9@gmail.com

Alex Tooze 822800
Alex_tooze@hotmail.com

Advertising

Jenny Fells
jennyfells@btinternet.com

Community Diary

Delivery

Cathy Sharkey 07874 999204

Treasurer

Miles Leonard 822415



**TIME
TO
DREAM
BIG**

HALLANDSCOTT.CO.UK



CONTACT OUR OFFICE
TODAY FOR A
FREE VALUATION
AND MORE INFORMATION
ABOUT OUR SERVICES

CALL: 01404 812000
VISIT: HALLANDSCOTT.CO.UK

the Jack *in the* Green

A MASSIVE THANK YOU

Since we took over at the beginning of March, your support has been incredible. Thank you to all the familiar faces, and some new ones. Spring is here and our latest menus reflect the longer evenings and a lighter touch in the kitchen - roll on the first Devon asparagus!

HAVE A DRINK ON US

We're well known for our food but also love to see people at the bar having a good time. As well as several Devon cask ales, we also have Courtney's cider on tap, Guinness, Birra Moretti and numerous wines by the glass. There's AF options too including mocktails and Luscombe.

Next time you're in, ask for a Jack loyalty card and have a drink on us.

Craig & Miranda x

www.jackinthegreen.uk.com

Jack hotline: 01404 822240