

Whimble News



Oct/Nov 2006

**Christmas
Bookings
now being taken**

**QUIZ NIGHT EVERY OTHER
SUNDAY
Starts at 8.30pm
EVERYONE WELCOME!**

The Thirsty Farmer

WHIMPLE, EXETER, DEVON, EX5 2QQ

Telephone: 01404 822287

TRADITIONAL HOSPITALITY AT ITS BEST

**Varied A La Carte Menu changed daily
alongside traditional 'Farmers Favourites'**

Great Selection of fine Wines

Open all day Friday, Saturday & Sunday

DINNER DISCOS FOR CHRISTMAS PARTIES AVAILABLE

LIVE MUSIC DATES

Fri 13 October - El Cojones

Fri 10 November - Plan B

WHAT'S ON IN WHIMPLE

October

16th Parish Council meeting, Victory Hall, 7.00pm

16th Victory Hall AGM Victory Hall, 7.00pm

20th Auction of Pledges and Promises, Victory Hall, at 7.00pm.

November

4th Hospiscare Christmas Coffee Morning, Victory Hall 10.00am - 12noon

4th Fireworks at The Cricket Field 6.00pm

10th Traidcraft evening in the Church at 8.00pm

19th Living Willow Chair Making Day, Victory Hall 10.30am - 4.30pm

20th Parish Council meeting, Victory Hall, 7.00pm

25th The Heritage Centre will be open 10.00am – 12.30pm

December

1st Over 65's Party, Victory Hall 7.00pm

2nd The Heritage Centre will be open 10.00am – 12.30pm

3rd Advent Carol Service by candlelight in Whimple Church, 6.30pm

5th Pre-school Christmas Demonstration Evening

9th Orchard harmony concert in St Mary's Church, 7.30pm

10th Christingle Service Whimple Church, 3.00pm

St Mary's Church

Monthly Programme of Services

1st Sunday	8.00am	Holy Communion
	11.00am	All Age Service
2nd Sunday	11.00am	Holy Communion
	10.45am	S club11/Impact in the Scout Hut
3rd Sunday	8.00am	Holy Communion
	11.00am	Morning Service
4th Sunday	11.00am	Holy Communion
	10.45am	S club11/Impact in the Scout Hut
5th Sunday	11.00am	Joint Benefice Communion

Please use the Whimple Diary held in the Post Office for checking availability of venues and booking events.

If your Association has an event which you would like listed above please contact **Nicky Hitchcock** on 823194 or e-mail nickyjhitch@tiscali.co.uk

PETER SALTER A.I.R.T.E.

MOBILE MOTOR ENGINEER

(Member Institute of Road Transport Engineers)

Servicing & M.O.T. Preparation
Engine Overhauls & Bodywork Welding
Cars & Commercial Vehicles

Telephone: Whimble (01404) 823054

Talaton Inn

SUNDAY LUNCH - DAILY SPECIALS
BAR MENU AND SNACKS
RESTAURANT OPEN TUESDAYS TO
SATURDAY EVENING



**Good Ales, Good Food
Pop in and say Hello**

Tel: 822214

Ed The Ed

Welcome to our Autumnal edition of The Whimble News. The weather has been kind to us, so kind that we walked to the 5 Bells at Clyst Hydon one Sunday, with friends. We sat in the garden plus a few wasps, and enjoyed our lemonades very much. It only takes an hour and is excellent exercise to burn off all those calories from the demon bottle.

Such a pleasant reward!!

Suddenly it has become the last 'this', the last 'that' of the summer – the last of the events in the open at Knowle Cross (in the warmer temperatures) was the Plan B gig at the Cricket Club. I was able to demonstrate the full range of my John Travolta moves but without the white suit – you know how grass stains....plus with my problem.....if it is outside with a BBQ, you have to have Yellow Hammer by O'Hanlons – nothing else will do. It was a well supported evening and great fun. Plan B continue to be a brilliant band and there were lots of good people enjoying the music, beer and BBQ . Well done to Geoff Delves and his team for all their efforts on that night. The charity cricket match suffered from poor weather – not wet but dull and gloomy. But did that stop the cricketing stars of the village from displaying the skills to a small crowd? No, I hear you roar. I felt that it was my duty to support for most of the afternoon until I developed cramp in the right arm and had to be escorted home by the current Mrs H. Some great cricket – very fast and a lot of fun. Again Geoff was the driving force there – thanks Geoff. Which reminds me, I spent a very educational evening with Geoff, Karen and Sean at the Dog Racing earlier in the summer, plus more lemonade, discussing the finer points of the football away game, the offside rule and how to handle a late tackle, and how much noise you can make before being invited off the pitch. I would hasten to add that it is only knowledge and not skill – so no offers!!!!

Young Graham Fowle is advertising the Fireworks extravaganza for Saturday 4th November – please support this by buying raffle tickets, being there and donating generously.

Our raving reporter, young Julie Milward has been out and about again – I really enjoyed her last one about travelling John Treagood – and this time she has been to see John Hooper and his award winning garden. It is good to see village success - well done John!

Dare I mention the 'C' word....the next edition of your Whimble News will be the last one before Christmas, so please get any articles into either Toyboy Scanlan on bob.scanlan@eclipse.co.uk, or via Jim (but I only came up to the cricket match for a beer and here I am on the field) and Alison at the PO. Likewise if you want any events put into the 'Whats on In Whimble', you need to get those into the current Mrs H before she starts practising for the December drinking – she loses weeks at a time most years. **The cut off date is November 13th** – note that in your diaries, friends – you never know when you will need it.

Take care.

Ed H

Waves of Whimble

Joyce and Hayley have pleasure in announcing a new team member to the salon

SALLY

Qualified in unisex hairdressing, Advanced Colour Courses with L'Oreal and Wella

Available 'til 8pm Thursdays. Modern or Traditional – Long or Short.

She is waiting for your call

Open: Tues – Friday 9am to 5pm, Saturday 9am to 1pm. Late Night by appointment.

Free parking by kind permission of the Thirsty Farmer

TEL 01404 823400

Liberte

HOLIDAYS

...Your French connection South of France:

Long lazy sunny days in a beautiful French villa, with communal pool right on the Mediterranean coast.

Sleeps up to six and includes patio garden with barbecue. Satellite TV, washing machine, bike and roller-blade hire, wind surfing, kite surfing and sand sailing, as well as horse riding and go carting and on the edge of a nature reserve.

Situated near all major airports (Flybe, Ryanair, Easyjet) and airport collection available. Auto train to Narbonne from Calais; 10 min drive from motorway. Prices from £70 p.p./during July and August (price based on 6 people sharing). Also countryside B & B available and assistance with house searches and relocation available.

Please visit: **www.liberteholidays.com** or phone Janine or Paul on

00-33-468-44-12-08



Whimble Post Office News



By the time this article reaches you 'Pricing in Proportion' would have been in existence for a few weeks. We feel that the change has been quite successful, with some items of mail costing much less than before.

There is now more scope to send parcels 2nd Class – up to 1kg, so why not take advantage of this and get your Christmas parcels off early. By the way, parcels overseas have not been affected by this new pricing method.

Christmas Posting Dates - The leaflets with these in are now available, please call in to collect one if you are sending mail overseas this year. Parcels destined for outside of Europe will need a customs declaration form, please ask us for one if this is applicable to you, it may save you time to have the paperwork prepared prior to posting.

We hope that the postal strike last month did not inconvenience you too much – On behalf of the Delivery Staff we would like to thank you for your patience during this time. The chaps have certainly had a very difficult time trying to cope with the backlog of post – under the circumstances they coped admirably.

Thanking you all for your continuing support.

Jim & Alison

p.s . I have been overwhelmed with demand for the marmalade and jams, however I have now run out of jars – so if you can spare any empty jam jars it would be most appreciated.

Whimble Victory Hall

Come along to the
Annual General Meeting
of the Victory Hall Trustees
at 7.00pm on Monday 16th October

This is an open meeting and everyone is welcome

From My Garden in the Square

Edith Marie-Louise Grout

Where are the songs of Spring? Ay, where are they?
Think not of them, you have your music too, -
While barred clouds bloom the soft-dying day
And touch the stubble plains with rosy hue;
Then in a mournful choir the small gnats mourn
Among the river swallows, borne aloft
Or sinking as the light wind lives or dies;
And full-grown lambs loud bleat from hilly bourn
Hedge crickets sing; and now with treble soft
The red-breast whistles from a garden croft
And gathering swallows twitter in the skies

This is the last verse of the delightful poem by Keats 'To Autumn' which starts with the well-known 'Season of mists and mellow fruitfulness', I have quoted it so often that I thought time for a change.

Bright October has come, misty and vibrant. My garden is gay with berries of all sorts and red and yellow leaves make fine patches of colour in the bright sunshine intertwined with the sophisticated cob-webs. To watch the spinning of a web from start to finish is fascinating and I marvel at it year after year. The crab apples, which have blossomed profusely in the spring, are now covered with bright red fruit, which I keep as a special treat for the blackbirds and thrushes; they will be busy feasting on them. The rowanberries are another favourite food for birds, especially songbirds. They sing for hours after having gorged themselves and it will aid the propagation of the seeds.

The Autumnal Equinox has come and gone and a month will have passed when the end of British Summer Time comes on Sunday 29th October when we will all be busy putting our clocks back. Our summer visitants have taken their departure; the chiffchaffs have given their last concert. The tits are returning in great numbers to their old haunts, which they deserted in the summer. They are fluttering about hoping to find the old coconut filled with their favourite nuts. I love to see my winter visitors back. Observing their antics is one of my favourite pastimes. The robins begin to sing again. Their song is short and liquid, the call a sweet 'tictic' when excited also high-pitched 'tsweee' and soft 'tsit'. The robins are best known for being territorial in winter. The male and female hold separate

plots and both sing loudly to advertise their territories but usually accept their boundaries. They are well known to drive off intruders by their song and threatening display. I have observed my favourite robin closely as he stretches himself up, fluffs up the bright red feathers on his breast and displays them to his rival.

Robins and chaffinches remind me so much of my golden childhood in the Swiss Alps; chaffinches announcing spring on the great rowan tree in the garden in a rollicking cadence always ending in a flourish. To me it is reminiscent of a cricketer bowling with rollicking speed and ending up with a flourish, hopefully a wicket for good measure. I was so happy when we moved to our smallholding in Aylesbeare to find our dream house displaying a rowan tree and, joy of joy, a chaffinch singing sweetly to greet us. When we moved to the Square we planted a rowan tree and soon afterwards the chaffinches came too. Rowan trees are ruled by the planet sun and there are many legends attached to them. In Scandinavia it is the feminine equivalent of the ash tree. They say that the first woman was born from the rowan and the man from the ash. In Devon rowan was brought in on Holy Rood Day, 3rd May to utilise its protective qualities.

I am so very lucky to live in The Square and have such a large garden, which I am gradually transforming into a nature reserve. In ancient times Britain was known as a place of initiation and learning where the natural resources would not only sustain its people but gave them a foundation on which to structure daily life according to seasons. By it they found inspiration, fulfilment and security as they were attuned to nature and its rhythm. Today such relations are almost forgotten; very few people know that there are changing seasons that affect the tides, the weather and nature.

People do not seem to be able to communicate and reach out to others, for communicating between people seems hard enough let alone communicating with nature and its cadence. With a surfeit of news from all over the world we are told what is happening in Timbuktu and yet we hardly know what is happening in the next village. We are too busy in a world that substitutes new towns and roads for fields and woodland, and supermarkets for gardens; all this in the name of progress. Since I came to England fifty years ago our land has become covered in tarmac and concrete and yet we need the fields and the trees to survive, for, by holding the memories of what we were and the seed of what will be, they form our identity as individuals.

Alas the swallows in Keats poem 'To Autumn' are no longer twittering in the sky and I miss them in the autumn evenings when I used to sit under the birch following their acrobatic displays in the sky and listening to the music of their song: Such a simple pleasure.





The Veterinary Clinic, Whimple

Consultations by appointment.

We also offer routine surgery and dental treatment.

Please call the surgery to arrange this.

Surgery times:

Monday and Wednesday: 8.45am - 9.15am

Monday to Friday: 4.30pm - 5.30pm

Saturday: 11.00am - 12.00noon

For an appointment and for all veterinary enquiries, please call 01404 823230

West One

Hair Design
01404 814 913

For Ladies and Gentlemen

**3, The Old Village Hall, West Hill Road, West Hill,
(Nr West Hill Garage) Free Parking**

Working Thursdays and Saturdays.

Ladies cuts from £8.00

Men's cuts from £6.50

Children from £5.00

Our qualifications include Hairdressing NVQ 1 & 2

Diplomas in: Toni & Guy advanced Technical Colouring, Colour Correction,
L'Oreal Colour Keys, Techniques 2000, Cutting and Perming.

Opening: Monday, Wednesday, Thursday, Friday & Saturday.

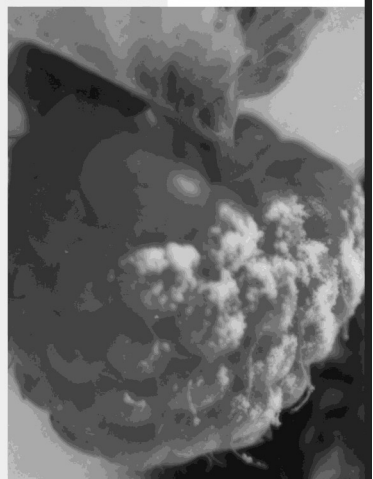
For an Appointment Please call **01404 814913** or Call in for Free Consultation.

whatever the occasion

The Jack In The Green Inn, one of Devon's finest restaurants, is pleased to support the village Magazine The Whimple News.

Our award winning food is prepared with the finest ingredients by our uncompromising chefs.

So from bar snacks to a la carte our sumptuous meals suit every occasion and celebration.



...we'd like you to come and see us

THE JACK IN THE
GREEN INN

Rockbeare, Near Exeter, Devon EX5 2EE.
Telephone: 01404 822240 www.jackinthegreen.uk.com

MILESTONE SERVICES

TEXACO GARAGE WHIMPLE

Welcome to



-o-

GROCERIES - FROZEN AND CHILLED FOODS - FRUIT AND VEGETABLES
WINES BEERS SPIRITS- FRESH BAKED BREAD - HOT SNACKS AND DRINKS
NEWSPAPERS - MAGAZINES & MUCH, MUCH MORE

-o-

**LOOK OUT FOR OUR MONTHLY SPECIALS -SELECTED LINES AT
SUPERMARKET PRICES! (EG. 3 BOTTLES OF WINE FOR £10)**

-o-

JOIN OUR DVD CLUB

(MEMBERSHIP FREE) RENTALS FROM 99P

-o-

PAYPOINT AGENT

PAY YOUR BILLS - TOP UP YOUR MOBILE - TV LICENCE
ELECTRICITY KEY CHARGING ETC

-o-

CASH MACHINE IN STORE

-o-

WE ALSO SELL CALOR GAS - COAL - LOGS - CAR CARE PRODUCTS -
GARDEN STONWARE & COMPOSTS.

FUELS AND OILS AT COMPETITIVE PRICES

-o-

LONDIS at Milestone - Best Value Locally

-o-

OPEN UNTIL 10.00PM

Telephone (01404) 822005

Vision for Whimble The Parish Plan

Perhaps inevitably, summer holidays and other commitments have resulted in slippage in the planned timetable and it has not been possible to deliver the questionnaire with this issue of Whimble News. The steering group has been working hard to produce a questionnaire which will provide both relevant information on which to base future policies and views on issues which can realistically be included in an action plan. It will however be delivered as soon as possible.

Following analysis of the replies to the questionnaire (which will be carried out on our behalf by Devon County Council) there will be another consultation event which will hopefully result in consensus on the content of the action plan. Watch this space!

If you have any queries or comments on the parish plan process please contact **Mike Ellingham** on 01404 822945.



St Mary's Church

Sunday 3rd December Advent Carol Service by candlelight 6.30pm
 Sunday 10th December Christingle Service 3.00pm



LOWER SOUTHBROOK FARM

Holiday Cottages

Southbrook Lane

Whimble

Exeter

EX5 2PG

Tel: 01404 822989

"Enjoy the peace and quiet of the Devon countryside space for the children to play"



Proprietors

Angela &

Stuart

Lang

Central Heating *

Colour Television *

Swimming Pool
(Heated May to Aug)



Summer Holidays
*
Winter Breaks

Travel Plan News

After a very busy year with the school Travel Plan, which culminated in 4 children, Mrs Brice and Emma Palmer travelling to Buckfast Abbey in July to do a presentation to the Devon Travelwise Conference, we now need to sustain and build on those efforts.

Whilst at the conference, they received, on behalf of the school, a Silver Award for the Whimble School Travel Plan, and £100 of book tokens which will be spent on books which are relevant to health and a healthy lifestyle.

Walking Buses

As you may already know, one of the most noticeable features of the Travel Plan, was the setting up of our 3 walking buses. All of the buses now have vacancies for passengers, and there is always a need for more volunteer drivers, particularly on the Chard Avenue and Slewton buses. If you are at all interested, please speak to Emma Palmer – the walking bus coordinator - 823083. Being a bus driver is not a huge commitment of time or exclusive to parents. There is no reason not to use community drivers – a Criminal Record Bureau check is the only requirement and these can be applied for through the school. Most of the buses leave at about 8.45 am, so the time commitment for a driver is 15 minutes, and with more drivers, each one drives on fewer days. Pre-school children can be passengers as well as school age children, and parents who are not drivers are always welcome to travel with the bus, we don't want to discourage parents from accompanying their children to school.

The buses are also ideal for those who need to drive into the village. You can pick up a bus in the Square or outside the Thirsty Farmer. We are as always very grateful to Vicki and Tanya at the pub for use of their car park.

Whilst year 6 children are encouraged to be more independent, we need year 4 & 5 children to be good role models for the younger children.

Whimble Walking Buses are a way of life, not a short lived novelty, please help.

Thanks to all the drivers for their continued help, and to all the passengers for supporting the buses.



Cycle Training

Last term saw 11 children from years 5 and 6 successfully complete their cycle training course under the instruction of Andrew Hart, Richard Betts and Rebecca Dominy, with the help of Kevin Keighery – many thanks to all of them for their dedication to such a worthwhile venture. There are another 12 children who started the six week course last Friday – fantastic to have so many children keen to use their bikes in a safe and responsible way.

In order for there to be more courses next spring/summer, more volunteers are needed please, again, this is not restricted to parents. There is a one-day training course, if you would like details, please speak to Carol Hart - 823575. The courses are for children of 10yrs and over. Devon County Council cannot insure younger children.

We are very pleased to see the arrival of the 20 mph zone, please help us to keep everyone safe, by adhering to it. We feel it is not long enough, so appeal to all you drivers to drive slowly in all areas of the village.

We look forward to another year of keeping our children safe and increasing their ability to keep themselves safe as they grow-up.

Whimple School Travel Plan Committee

WHIMPLETONS

(you know - the ones wot does the pantomime in February!)

Believe it or not, Peter Bolwell, our 'writer in residence', has spent the summer slaving over a hot keyboard to create the finest pantomime known to man, that will be put on - not by the Royal Shakespeare Company, but by the Whimpletons, my dear! The title is, as yet, unannounced, but there will be a theme this year - like most years the theme consists of trying to recognise the plot, linking the title of the panto to what is actually happening in front of you, working out where the script raises its ugly head above all the ad libs coupled with the frantic attempts to get the dialogue back on track, if any one can remember what that track was...etc etc.

Miles and I will be recreating the chaos that is our world, and who cares how it relates to the script - if it made us laugh, then put it in!!

Believe it or not, there are always opportunities for brave souls in the village to join in with the 'support' activities like front of house on the 3 nights of what is loosely called the performance, and helping with the raffle. If you are a skilled person, then there is helping with the construction of the scenery, the painting of said scenery, and assistance with props etc (no, not the cast - assistance with them needs lots of training, nerves of steel and hours of patience...or is it patients?)

If you would like to get involved with this group of miscreants, vagabonds and murderers of all things theatrical and good taste, please contact **Emma Palmer** on 823083.

THE PENSION DRAWDOWN COMPANY

INDEPENDENT FINANCIAL ADVISERS

FOR UNBIASED, QUALITY FINANCIAL ADVICE BASED ON YOUR
CIRCUMSTANCES PROVIDING SOLUTIONS TO YOUR NEEDS
INCLUDING

SAVINGS INVESTMENTS PENSION PROVISION
RETIREMENT OPTIONS inc ANNUITIES
LIFE AND CRITICAL ILLNESS COVER INCOME PROTECTION

Contact: Bob Diamond at Waterlake Meadow, Church Road, Whimble
On 01404 822865 or Email r.diamond1@ntlworld.com
For a free initial consultation

Appointed Representative of The Burns-Anderson Independent Network PLC,
which is Authorised and regulated by the Financial Services Authority

Martha Mockford

Quality kitchens at affordable prices

*manufactured and expertly fitted by our own staff
better value for money than DIY stores*

Also re-fronts & new worktops
Carpets, vinyls and wooden flooring

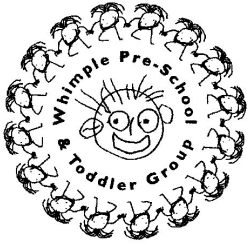
Complete, friendly service from a local family business

Hotpoint, AEG, SMEG, Franke, Blanco



01404 44189





Registered Charity No: 1029316

WHIMPLE PRE-SCHOOL & TODDLER GROUP

TODDLER GROUP NEWS

Calling all Babies & Toddlers (0-3 years), are you looking for something to do on a Wednesday afternoon during term time between 2pm-4pm? Why not come along with your Mum/Dad/Carer & have some fun at Toddler Group. This is an informal session run by volunteers in the Billiard Room at the rear of Whimple Victory Hall. We have lots of toys, puzzles, occasional craft activities, special events (Christmas Party, Easter Egg Hunt, & Village week event), snack time, song/story time & tea/coffee for adults. It only costs £1 per child per week & the first week is free. If you want to bring along your siblings you are welcome to do so for an extra 25p per sibling. We welcome siblings of any age if they want to come along & join in. Please support us; we desperately need more children to attend in order to continue to operate. Toddler Group runs from the same room as Pre School so is an excellent stepping stone to starting Pre School. If you would like any further information, please contact Karen Bell on 01404 823443 or Vicky Clough on 01404 822800.

PRE-SCHOOL NEWS

Please make a note of our forthcoming fundraising events:

Living Willow Chair Making Day in the Victory hall on Sunday 19th November from 10.30am - 4.30pm - cost £30 including lunch & materials - book early as limited to 20 places, booking forms available from Whimple Post Office & Whimple Stores from Mid October. Come along & have fun creating your own Living Willow Chair to plant in your garden or give to someone as a gift. The chair will offer shade from the sun & can be planted with herbs to create an aromatic & relaxing retreat in any garden.

Christmas Demonstration Evening, Tuesday 5th December - get into the festive spirit & be inspired with some new & exciting ideas to decorate your home this Christmas. Always a popular event; tickets will be on sale from Mid November at Whimple Stores & Whimple Post Office. Ticket price will include seasonal refreshments.

Don't forget our ever popular Curry & Quiz Night on Saturday 27th January in the Victory Hall. Get a team together & exercise the grey matter, enjoy some great food & drink whilst helping to raise funds for your local Pre-School.

On behalf of the Committee, Staff, Parents and Children, I would like to thank you all for your continued support.

Vicky Clough (Vice Chairperson) 01404 822800

WHIMPLE

The Perfect Village

“A great community, good amenities and excellent accessibility”



We have a constant stream of enquiries for property of all types in and around Whimple.

ASK FOR A FREE VALUATION

01404 814306

www.redfernsproperty.co.uk

Tim Wright

S Club 11

&

IMPACT

SClub11 & Impact 10:45am in the Scout Hut

Oct 8th (SClub only), Oct 22th

Nov 12th, Nov 26th,

Dec 10th Christmas Special

Oct 6 - 8th Impact & Contact Weekend Away to Dartmoor

'Celebration' services in Whimble Church:

Oct 1st, Nov 5th, Dec 17th Christmas Special

Impact ClubNights @6pm:

Nov 11th Quiz Night.

Dec 9th Formal Christmas Dinner

Whimble Runners

Our very first run was on Sunday 10th September, starting at 7.20am. We have just finished the second run - this article is being written on 17th September. There is a good deal of enthusiasm at the moment though it remains to be seen how things go as the mornings get darker and colder! Nine runners have so far run at least once; Bill, Glenn, Julia, Justin, Kevin, Nick, Sandra, Tracy and the writer (in strict alphabetical order).

If you'd like to run 5 miles then the start time on Sunday from the Thirsty Farmer is at either 7.20am or 8.10am; but for 10 miles you'll need to be in the first group! We are using a number of different routes of around 5 miles, coming back to the Farmer after the first five miles before setting off again. The intention is to run at a pace where talking is possible!

If you'd like to join us and are over 18 years old, you'd be very welcome. To check if the run is going ahead please call 823675 but unless conditions are icy, or there is a thunderstorm brewing, we'll probably be running! As the mornings get darker head-torches might be needed on the first 5 miles.

Sunday seems to go really well with some miles under the belt by 9.00am. See you there??

Mark Beedell



DC DECKING & JOINERY

Quality Carpentry Services

BESPOKE HAND CRAFTED GATES

- *FREE ESTIMATES*
- *MANY REDWOOD DESIGNS*
- *SUPPLY & INSTALLATION*
- *TOTAL SECURITY*

CARPENTRY

- *FREE ESTIMATES*
- *KITCHENS & BEDROOMS*
- *BUILT IN WARDROBES*
- *UPVC INSTALLATIONS*

Many years experience,

Fully Qualified

Large Portfolio

QUALITY DECKING SERVICES

- *FREE DESIGN & PLANNING*
- *QUALIFIED INSTALLERS*
- *TREATED MATERIALS*

JOINERY

- *HAND MADE GARDEN FURNITURE*
- *ANYTHING THAT NEEDS TO BE MADE OR REPAIRED*

For a friendly, efficient & professional service please contact our team

Telephone : 01404 822126 Mobile: 07980 889968 Email: dcdocking@aol.com

GOODBYE TO MUFFIN.....

Well, as you read this edition of the Whimble News, the opening season for the Whimble Heritage Centre will have just come to an end for another year. And what a Summer it's been, thanks to Muffin the Mule!

We have had about 1500 visitors since we opened at the beginning of April, with the largest numbers coming on the days when the real Muffin and his puppet friends came to visit in person. We've had mentions on TV and radio because of the exhibition and people have come from all over Devon (and beyond!) for a chance to see Muffin. It really has been an honour to hold an exhibition about such an important celebrity!

A big thank you must go to the people who have helped out at the Heritage Centre during the season. The stewards have worked so hard, guiding and chatting with the visitors and ensuring they enjoyed their visit. Behind the scenes there is cleaning, stocking the shop, building health and safety, curating the displays and keeping financial records - everyone involved in these activities is also thanked for their important contribution.

We hope you have enjoyed what was on offer this year at the Heritage Centre. The Committee is already getting together to make plans for next year!

Of course, the History Society has a number of events planned for the Winter months, the first being the Auction of Pledges and Promises on Friday October 20th at the Victory Hall, at 7.00pm. You can bring along your own refreshments and hopefully some money in your pockets and enjoy bidding for the wide variety of pledges and promises varying from a game of golf at Oaks International Golf Course, Woodbury Park, to a sack of potatoes.

The Heritage Centre will also be open on Saturday 25th November and Saturday 2nd December from 10.00am - 12.30pm when you can come and buy Christmas presents and support the History Society at the same time. On sale will be Whimble calendars and mugs, cards and much more.

As always, if you would like to become a member of the Whimble History Society, or help out in any way at the Heritage Centre, please contact the Secretary of the Society, **Dr Roger Smith** on 822244.

Naome Glanville





SOLICITORS

The Complete Legal Service for
families, individuals and businesses
throughout East Devon

We will visit you at your home if you wish

For further information and to arrange a
free initial consultation please telephone

**813446 (Ottery)
or 41221 (Honiton)
or David Smith on 822123**

HDR

Records & Pop Memorabilia Wanted

Good prices paid for the following

Records. CD's, Rock & concert Memorabilia

Tour Programmes/ Old Tickets/ Magazines/ Sheet Music



All types of music, large or small collections

Rock - Pop - 50's - 60's - 70's - Punk - 80's

John W Griffiths

Phone: 01404 823480

Mobile: 07836 369740

Email: hdicksrecords@yahoo.co.uk

WHIMPLE STORES IS PROUD TO PRESENT
THE ANNUAL FIREWORKS EVENT TO BE HELD ON SATURDAY NIGHT
4th OF NOVEMBER AT THE WHIMPLE CRICKET CLUB GROUNDS
STARTING AT 6pm

WHIMPLE GOING CRACKERS IN NOVEMBER

DON'T MISS THIS YEAR'S SPECTACULAR DISPLAY

FOOD & DRINKS AVAILABLE

CHILDREN'S RAFFLE DRAW

MAIN RAFFLE DRAW TICKETS ARE AVAILABLE NOW

IN THE SHOP & ON THE NIGHT

WARNING THIS SHOW PRODUCES BRIGHT LIGHT , FLASHES OF COLOUR, LOUD NOISES. SPECTATORS MUST REMAIN BEHIND ROPE BARRIER FOR SAFETY REASONS. ENTRY BY THE GATE ONLY, PARENTS MUST SUPERVISE THEIR CHILDREN AT ALL TIMES DURING FIREWORKS DISPLAY

PROCEEDS FROM THE NIGHT WILL BE DIVIDED BETWEEN SEVERAL LOCAL ORGANISATIONS - SO AS WELL AS HAVING A GREAT NIGHT YOU WILL BE CONTRIBUTING TOWARDS OTHER EVENTS FOR WHIMPLE.

ENTRY IS FREE TO WATCH THE SHOW SO MAKE SURE
YOU REMEMBER THE DATE

SATURDAY NOVEMBER THE 4th @ 6pm

PLEASE FEEL FREE TO INVITE ALL YOUR FRIENDS AND RELATIVES
PLEASE ALSO REMEMBER THAT THIS NIGHT IS ONLY POSSIBLE DUE TO
GENEROUS SUPPORT FROM OUR SPONSORS , THE SALE OF RAFFLE
TICKETS AND ADVERTISING IN THE SHOP

**THIS IS WHIMPLE'S NIGHT
SO LET US ALL MAKE A GREAT NIGHT OF IT**

GRAHAM & KAREN

WHIMPLE STORES

WOULD LIKE TO TAKE THIS OPPORTUNITY TO THANK ALL OF YOU THAT HAVE SUPPORTED THE SHOP THROUGHOUT THE YEAR AND HOPE THAT YOU ENJOY THIS FIREWORKS DISPLAY FROM US TO YOU AS A WAY OF A THANK YOU.



★ DRAIN-WIZARD

Pitch Fibre Specialists
Drainage & Light Plumbing Services

24 Hour Emergency Service

Blockages, Jetting, CCTV, Repairs, Lining,
Renewals, Septic Tank & Soakaway
Problems, Toilets, Ball Valve & Leaks

Tel: Whimple (01404) 822913

Mobile: 07815 064669



Berry Farm



Apple juice, Cider, Eggs, Pork,
Fruit & Vegetables

Please call Jenny on 01404 823930

Or visit us in Clyst St Lawrence



Ford Simey
Solicitors

**Make a Will
and we will donate half our costs to your
Church or a charity of your choice**

**For a straightforward Will we charge £80 and for husbands
and wives "Mirror Wills" we charge £100 plus VAT.**

We will donate £40 and £50 respectively

For full details call

Victor Donson on 01392 274126

8 Cathedral Close, Exeter EX1 1EW

www.fordsimey.co.uk

**CHAIR CANING
RUSH SEATING
SKEINED WILLOW**



Tel: 01404 822422

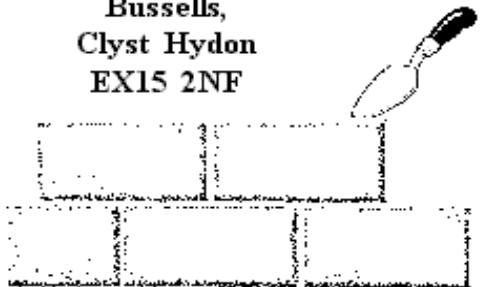
Higher
Slewton
Whimple

Rosemarie Burrows

**TWW BUILDING
SERVICES**

**EXTENSIONS, PATIOS, PONDS,
STONEWALLS, FIREPLACES
PAINTING ETC.**

**Bussells,
Clyst Hydon
EX15 2NF**



Tel: 07749 715187

JOHN HOOPER'S - AWARD WINNING GARDEN

John has been entering the EDDC Housing Service Garden Competition for as long as he has lived at Orchard Court – but this is the first time he has been awarded the main prize. On a warm but very breezy day in September I set off to meet John and look around his garden. On approaching his home, it was clear just how he had achieved Gold Prize Winner in the 'Overall Garden Category'. What a welcome - abundant hanging baskets filled with petunias and lobelia draping each side of the door, Busy Lizzies leaning in carefree profusion out of window boxes as well as marigolds, fuchsias and the like jumping up at the knees daring you *not* to take notice! To say every square inch is put to good use would be an understatement. Three quarters is turned over to produce whilst anywhere else that could be hung, propped or potted is filled mostly with bedding. To the side of the bungalow, the 'hungry' eye is treated to tall rows of beans quietly clinging to their canes along side cabbages, cauliflowers and leeks to mention but a few greens!

In the small but prolific back garden, orderly veggies lay alongside the vibrant colour of other planting comprising larger displays of Busy Lizzies, a well established Hydrangea and a show-stoppingly large Zantadeschia (arum lily) set at the foot of the kitchen wall. I may not have been seeing the garden at its very best but still, the richness and volume of plants are true testimony to how well John tends and cares for them.

Most plants are propagated from seeds and cuttings taken over the year to be topped up with plug plants when growing season kicks off again in the spring. John is lucky enough to have space in a friend's large greenhouse where he patiently tends most of his plants - pricking out, potting on, and hardening off. At home, he makes best use of the space he has for over wintering young plants. During this time - pot cleaning, tool maintenance and turning the beds in preparation for the new season's planting takes precedence.

Come springtime, the soil is improved utilizing recyclable kitchen and garden matter - much of which is thankfully received from helpful neighbours. Hanging baskets are planted out and ready for hardening off at the beginning of May. As best he can, all plant preparation and maintenance is organic with the use of a drop of fertilizer every now and then. The time it takes in planning, preparing and planting is not to be underestimated making this the busiest few months in his calendar (as it is for all gardeners)!

You'd be inclined to think that, with all this going on, John wouldn't have the time for anything else – but not so! The country way of life is of paramount importance, having been born and raised in Natterdon Farm, Chagford (other than doing service in the Fleet Air Arm) John has lived in Devon all his life. He'd been riding since the age of three until a riding accident damaged his back and put paid to that a few years ago.

Now, he's a regular follower of the East Devon Hunt which fits in between the odd day's rough shooting, assisting his friend who has health problems with the upkeep of her garden, keeping in touch with his family (and we all know how time consuming that can be) as well as entertaining friends with home cooked meals from a very well stocked larder! We did laugh, as it has to be said "one wonders how he ever found the time to work!"

In the past, he managed the 2,500 acre Coleton Fishacre Estate, a private residence for Roland Smith (famously known for introducing the Ford car to the UK). They used to supply beef, lamb and vegetables to The Grand Hotel and Palace Hotel amongst others, in Torquay. On Roland's death, the property was purchased by the National Trust in order to retain the Dartmouth to Brixham stretch of coastal path. As a result of the sale, John moved to Brixham and started a Relief Farm Service; managing farms when owners were away as well as preparing livestock for auction. Showing beef cattle was one of his main passions. He admits to having a soft spot for Jersey cows - the look and the form has always pleased him not to mention the satisfaction of holding a well behaved and much admired prize winner in the ring. I gather this was one of the most satisfying periods in John's working life which he continued up until the age of 65. Latterly, he became resident warden at Westpoint Arena living in a static caravan until the site was fully developed to what it is today.

He came to live in Orchard Court after having met his (now ex) wife Derreen and her family (Turl) in Whimble some fifty years ago! He has a full and enjoyable life and at eighty three puts a lot of us to shame for the energy he takes in doing so. As the saying goes "moss doesn't grow on a rolling stone" - so good on yer John and here's to next year!

Julie Millward



PETER COSSLETT

CARPENTER AND BUILDER

QUALITY WORKMANSHIP

KITCHEN FITTING

DOORS AND WINDOWS

TIMBER CONSERVATORIES

EXTENSIONS AND MINOR

BUILDING WORKS

COMPETITIVE PRICES

&

FRIENDLY SERVICE

Tel: Whimble (01404)823279

Mobile: 07768 436042

S.H. DANIEL

ELECTRICAL CONTRACTOR

CROCKERNHAYES

WHIMPLE

PRIVATE ADDRESS

Malham House

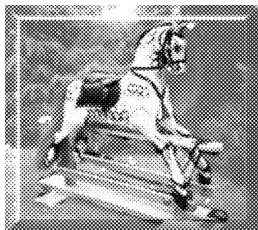
Awliscombe

Devon



BANFIELDS

*Traditionally carved rocking
Horses & Restoration*



18 Rectory Close, Whimble,
Devon EX5 2UF

Tel 822162

E-mail Banfieldgew@msn.com

D. GARLAND

**Specialist in
Built in Furniture,
Carpentry and
Joinery**

DG

**10 Elliot Close
Ottery St Mary
Devon**

EX11 1GZ

Tel: 01404 811465



Longfield Cattery

heated single and double chalets
personal care and attention



(now also looking after small animals)

01404 822275

Longfield ~ Church Road ~ Whimble ~ Exeter ~ EX5 2TF

"Learn a life skill with a Professional"



J.C. Ball



Driving Standards Agency Approved Driving Instructor

- FREE:- First hour for beginners
- FREE:- Loan of Videos and Books
- FREE:- Pickup in Exeter & East Devon

2 Manley Close
Whimble
Devon
EX5 2UG
(01404) 822764

Refresher and Motorway Lessons

"Safe driving for life"

WHIMPLE AND DISTRICT VILLAGE PRODUCE ASSOCIATION

The 2006 annual Flower Show will go down as another outstanding success. It was so good to see so many new exhibitors and it was also good to see some new names on the winners roll of honour. Despite the long dry spell in July, it was the vegetable classes that had the best number of exhibits for many a years. A complete list of Cup Winners is included with this report. We had 103 exhibitors this year, which was two more than last year's record number.

The Children's Classes, with not quite as many exhibits as some years, were still full of their usual high standard and imagination. Winners in these classes were Annabel Courtney who won the Cygnets Cup; Chloe Betts and David Banfield who jointly won the Basildon Award; Jesse Wilson who won The Fletcher Cup and Jenny Bowker who won The Children's Challenge Cup for the second year running. The photography section was again keenly contested with some outstanding pictures, but it was Gilly Curtis who took the honours in this section winning the Paul Henry G.C. Memorial Cup. In the Arts and Crafts Classes there was an outstanding display of patchwork quilts which took a bit of ingenuity to display but we did manage it. Shirley Williams and Rachel Owen shared the Len Rose memorial Cup in the this section with Alison Creasy winning the Whimple Craft Cup.

Although there weren't as many exhibits as previous years, the flower arranging had the usual outstanding exhibits and added its own special contribution to the Show. The trophies in this section were won by Doreen Staddon who was entering for the first time in this section so many congratulations to her. The Marie Louise Grout Cup for the best exhibit in the Show, as voted by all who visited the Show was won by Ann Bowden. In the Beer and Wine Classes, there were joint winners of The Cranny Brook Cup, Sarah Smith and Carol Hart. Here again were two new cup winners so congratulations to them as well.. As usual the Homecraft section was full of mouth watering exhibits and congratulations to Margaret Burrough for her skills in winning the trophy in this section. I must mention that the men did themselves proud in this section with a large entry in the Class for a Victoria Sponge, and they were all edible!!!

The Pot Plant Section had a new winner this year and was won by M. Godfrey. It was good to see another year with good number of exhibits in this section. And finally, but by no means least, there was an exceptionally good entry in the flower and vegetable classes. This must have been a record year in these classes with so many exhibits in each class. Nineteen entries for runner beans and an amazing twenty five for cherry tomatoes! It was so good to see so many exhibits in these classes despite the very dry period in July and it certainly gave the judges a hard task. This was again a very keenly contested section and we had a new winner of The Whimple Folk Cup, this being won by Mr M. Godfrey.

Gerald Radford was the runner up in this section winning the Win and Bob Shepherd Cup with Paul Wilson winning The Slewton Cup and The President's Cup was won by Mrs G. Ward.

We were very pleased to welcome Mrs Joan Wilkinson to the Flower Show who very kindly presented all the prizes and, on behalf of the Show Committee, Tom and Robbie Palmer presented bouquets to her and their mother who had very kindly helped us with all the recipes.

The Committee would like to express their thanks to everyone who helped us set up the Hall for the Show and clear up afterwards, it is very much appreciated. Being the first year when we were not based at Sandfords, we were a little worried just how well our new set up would work, but thankfully we survived without too many disasters. A lot of the credit for this must go to our Chairman, Adrian Williams and to Angela Banfield who set up and ran our new computer programme to record the entries and results, so congratulations to you both! For those of you who were entering for the first time we hope you enjoyed the experience and we look forward to seeing you at next year's show - and talking of next year, the Flower Show will be on Saturday 11th August 2007, so start your planning now!!

Paul Wilson, Hon. Secretary.

PARTY TIME?

**Family Celebrations,
Milestone Anniversaries**

Marquee de ParTee

**Pretty Party Marquees and
Pavilion Tents hired for
*Your Special Occasion***

**Complete service for tables
chairs carpets lighting etc.**

**introductions to
Caterers & Hogroasters**

**Philip & Angela Crisp
Kennford, Exeter.**

01392 83 27 75

OR Visit us at:

www.marquee-de-partee.co.uk

The Jays



The Square, Whimpe. EX5 2SL

Jan and John offer a friendly and relaxed stay at the Jays.

Close to Exeter Airport for which transfers are available

Colour TV in all bedrooms

Guest Lounge with tea/coffee.

Several local Pubs and Restaurants within easy reach -(pick up service)

Bed and full Breakfast menu:

£18:50 per person per night.

No smoking preferred

Phone: 01404-823614

Fax: 01404-823629

WHIMPLE AND DISTRICT VILLAGE PRODUCE ASSOCIATION

WHIMPLE FLOWER SHOW 2006 CUP WINNERS

Section 1 Flowers and Vegetables:

The Whimble Folk Cup
The Win and Bob Shepherd Cup
The Slewton Cup
The President's Cup

WINNER

M. Godfrey
Gerald Radford
Paul Wilson
Mrs G. Ward

Section 2 Pot Plants:

The Briar Trophy

M. Godfrey

Section 3 Homecraft:

The Sir Henry Imbert - Terry Cup

Margaret Burrough

Section 4 Beer and Wine:

The Cranny Brook Cup

Sarah Smith & Carol Hart

Section 5 Floral Arrangement:

The Sandfords Cup
The Marie Louise Grout Cup
The Roy Horsburgh Trophy

Doreen Staddon
Ann Bowden
Doreen Staddon

Section 6 Arts and Crafts:

The Len Rose Memorial Cup
The Whimble Craft Cup

Shirley Williams & Rachel Owen
Alison Creasy

Section 7 Photography:

The Paul Henry G.C. Memorial Cup

Gilly Curtis

Section 8 Junior Classes Children Under 5 Years:

The Cygnets Cup

Annabel Courtney

Section 9 Junior Classes Children 5 to 7 Years:

The Basildon Award

Chloe Betts & David Banfield

Section 10 Junior Classes Children 8 to 11 Years:

The Fletcher Cup

Jesse Wilson

Section 11 Junior Classes Children 12 to 15 Years:

The Children's Challenge Cup

Jenny Bowker



TAYLOR MADE DRIVING

Beginners

Pass plus

Pre 17 lessons

Refresher lessons

Diamond advanced driving

Motorway driving

Theory & Hazard Perception Tuition

Male & Female instructors

High 1st time pass rate

Patient, Friendly & fun tuition

A local independent driving school

Teaching local people to

“DRIVE FOR LIFE”

CALL FREE 0800 652 66 69

Andrew & Jill Taylor

BARRY SEAFORTH DECORATING SERVICES

Est 1979



PAINTING WALLPAPERING
SPECIALIST FINISHES MURALS TILING
COVING CARPENTRY ALTERATIONS
REFERENCES AVAILABLE

Call Barry 01395 513729
Free Estimates



Little Cot
Hembury Fort
Honiton
Devon
EX14 3LE

Tel
01404 841699
Mobile
07976725516

M P SMALL ENGINES Mike Persey

SERVICE & REPAIR TO

All makes and types of
Horticultural / Garden
Forestry and Small Agricultural
Machinery

Specialist in the repair of older
Machinery and Sports Club machinery

Makeovers and rebuilds undertaken

New machinery at competitive prices

Collection Service




SLACK-MA GIRDLE

for
Ceilidhs, parties, weddings,
Christmas sing-a-longs.
The local band
for all occasions



Tel 823083

Not as interesting as Granny's!

Aromatherapy



Therapeutic Massage



Hopi Ear Candling



Sally Baker C.H.Ed (Dip Mass)
(Dip Aroma)

Complementary Medical Association Registered

Whimpe

Tel: 01404 822315

Mob: 07870 112071

email: salbaker63@hotmail.com



**Heritage
Taxis**

**At your service
01404 81 55 44**

Tom Vanneck

**Furniture Restorer
&**

French Polisher

**Modern & antique
commissions undertaken.**

Tel. 01392 860502

Mob. 07812810846

Compassworks

MOOR THAN NAVIGATION

WOULD YOU LIKE TO:

Learn to map read / develop existing skills?

Learn by practical experience?

Learn from specialists in a friendly atmosphere?

Know more about GPS and Navigational Software?

Find out what else COMPASSWORKS has to offer?

Tel: (01566) 783236 / 07711 055961

www.compassworks.co.uk

For all your daily requirements
of
MILK, CREAM, EGGS, FRUIT JUICE,
NEWSPAPERS & MAGAZINES
POTATOES, FRUIT & VEGETABLES
PET FOODS & REQUIREMENTS
AVAILABLE AT COMPETITIVE RATES

Delivered to your door

Please contact

VICTOR AND MARIAN DANIEL

Summerbridge, Whimble, Devon

Tel: Whimble 822458



WHIMPLE FAIRTRADE



It's hard to think about Christmas already BUT

We now have the TRAIDCRAFT Autumn/Winter Catalogue which contains lots of lovely goodies including Christmas Cards and Gifts as well as their regular range of Fair Trade Food items.

We have a folder which holds an example of each of the Christmas Card designs - so that you can see what they really look like - it will be at the back of the Church together with some order forms - please place your order as soon as possible- so you aren't disappointed.

We are happy to order any goods from the catalogue for you (saving you the £4.95 postage!)

Did you know that you can order Fair Trade Wine cases through us - these can be delivered free direct to you or your friends or relatives (What a great gift idea!)

You are invited to a
TRAIDCRAFT
evening
in the Church
on
FRIDAY NOVEMBER 10th
at 8pm

You will be able to taste Fairly Traded wine, coffee and chocolate, (hopefully) try some of the clothes and buy gifts (we have a selection of their jewellery, candles, advent calendars etc.)

Details of the event will be posted in the usual spots in the Village!

Please contact Sarah Smith on 822123, Aubrey Curry on 822295, Dy Beedell on 823675 or Maggie Spicer on 823640.

Thank you very much!

Simon Turner

Independent Financial Consultants

Penraddon

Hand & Pen

Whimple

EX5 2PX

For

Independent Advice

on Pensions

Mortgages

Investments

Life Assurance

Inheritance Tax Planning



Tel : **01404 822587**

For free initial consultation

AUCTION OF PLEDGES & PROMISES

On

FRIDAY 20TH OCTOBER 2006

at the

VICTORY HALL, WHIMPLE

In aid of Whimble History Society

7pm for 7.30pm start

ENTRY BY CATALOGUE WHICH COSTS 50P

Pledges and promises include:

A round of golf for 4 at the Oaks International Golf Course, Woodbury Park

- ◆ House sign of your choice
- ◆ Sunday lunch at the New Fountain for four
- ◆ Game of golf and bar meal at Daiton Park
- ◆ Christmas food hamper
- ◆ Computer lesson
- ◆ Basket of preserves
- ◆ Week's dog walking
- ◆ Three hours' power water cleaning
- ◆ Pottery lesson at Ark Pottery
- ◆ One night's B&B at the Jays
- ◆ Potted plant courtesy of Otter Nurseries
- ◆ Family lunch for 4 at the Jack in the Green
- ◆ Guided tour of the MET Office
- ◆ Three hours GCSE Science tuition
- ◆ Help writing CV
- ◆ Indian Head Massage courtesy Mrs S Evans
- ◆ Haircut, shampoo & set
- ◆ 500 business cards or headed paper to your choice courtesy of Mr K Thompson
- ◆ Cubic metre of wood chip courtesy Major Tree Services
- ◆ Assistance with website design
- ◆ Historical survey of your home courtesy of Mr P Hunt...

And many more!!!

BRING YOUR OWN REFRESHMENTS

**FOR ALL YOUR
SEWING REPAIRS**

**&
ALTERATIONS**

No job too small

**Also dressmaking, table linen
& Personalised machine
embroidery**



Call Molly on

Office. Tel 01392 460970

or 07748 985830 evenings,
Wednesdays or Sundays.

14 Bramley Avenue, Off Lower
Hill Barton, near to the Met
Office

CPM Plumbing & Heating



Your Local
Plumbing
& Heating Service



**Registered
Business**

205961

Repair & Servicing of Oil Gas & LPG
Heating Systems Boilers & Appliances

Using Hi-Tech Analysing equipment

Fully Insured - All work guaranteed

No Job Too Small - Free Estimates

CORGI & OFTEC Registered for all appliances

For a friendly professional service call:

Gary Clarke

Phone: 01404 822523 Mob: 07812013434
Garlands, 3 Dince Hill Close, Whimble

MASSAGE
in Whimble

FOOT MASSAGE

HEAD MASSAGE

BODY MASSAGE

(Half- or one-hour sessions)

Book your appointment with Lucy Ambler, Dip APNT

on **07808-720577**

Hospiscare



There will be a Christmas Coffee Morning in aid of Hospiscare at
the **Victory Hall** on:

Saturday 4th November from 10am to 12noon.

The main sales feature will be Hospiscare Christmas cards, but there will also be a number of stalls, including cakes, crafts, bric-a-brac and, of course, a draw.

Please come and support Hospiscare and if you would like to help or perhaps display a poster, please contact:

Rosemarie Burrows on 822422.

Whimple Victory Hall



Soup and Sarnie Lunches

from 12.00noon until 1.30pm

on Saturday 28th October

Saturday 25th November

and a Christmas Special

on Saturday 16th December

Come and Join us



The Great Tree Hunt

The Great Trees of Whimble

As you might know from a previous edition of the Whimble News, East Devon District Council has been requesting nominations for the 'Great Tree Hunt', a project to identify trees of significance to the area.

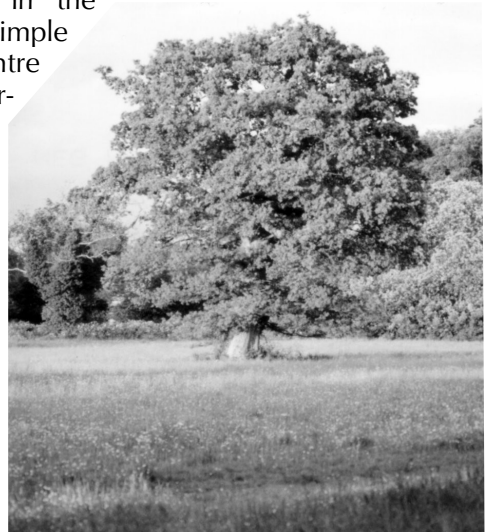
The good news is that two trees from Whimble have now been nominated as 'Great Trees, as follows:-

The oak tree in the old Cricket field, one of two oaks that lay in the field of play of the former Whimble and Whiteways Cricket Club, which played on the site from the early 1920's until 1990. If the tree was struck by the ball, it was a boundary valued at 2 runs (local rules applied) and the ball was considered "dead" – no matter whether it was a leaf or the trunk that was struck. Some touring cricket teams targeted the tree. The first player to strike it gained the "fines" money accrued during the tour. However they were then expected to buy drinks for all in the club house.

The 'Whimble Wonder', a heritage tree of the future:- it was grown from a graft of the last remaining 'Whimble Wonder', and is one of three trees of a particular cider variety only known in the village. It was planted by the Whimble History Society outside the Heritage Centre and represents the heritage of cider-making in Whimble.

You can find out more about the other Great Trees of East Devon and their stories by Googling 'East Devon Great Tree Hunt' on the Internet. Physical maps showing the trail of the Great trees can be obtained from the Secretary of the History Society on 822244, or by telephoning Kate Tobin, Project Manager of the Great Tree Project at East Devon District Council on 01395 517557.

Naome Glanville



The Great Cricket Oak

EXETER CARAVAN CENTRE

For Sale - pre-owned caravans
also caravans sold on owners behalf.

Caravans always bought and sold.

01404 822116

or

07985 179399

London Road, Whimple



SOFT FURNISHINGS & TRADITIONAL UPHOLSTERY

Loose Covers to Recovers
Cushions to Footstools
Headboards to Bedding
Curtains—Blinds—Pelmet
Swags & Tails
And much more

Jo Harris 01884 277519

Trimeasy

*Your Local Interior Decorating
Service*

Our award winning company has the expertise to provide fast professional workmanship, including stripping existing wallcovering, surface preparation and hanging all types of paper. Ceilings, Skirting Boards and Door painting.

No job too big or small.

Free no obligation estimate.

*Contact Alec Janaway to discuss your
requirements.*

"Mellifera" Church Road
Whimple, Devon. EX5 2TF
Tel/Fax: 01404 823019



Reg no: 4094



O'DELL PLUMBING & HEATING

Tel: 01404 811773 Mobile: 07974 818833

FOR ALL TYPES OF GAS AND OIL HEATING INSTALLATIONS.

BOILER SERVICE, REPAIR & BREAKDOWNS.

BATHROOMS & SHOWERS.

UNVENTED HOT WATER SYSTEMS

Garden Design and Construction
from a single border to a total make-over

**A PROFESSIONAL SERVICE WITH EXPERT
PLANT ADVICE - FREE CONSULTATION**



Golden Leaf
L a n d s c a p e s

Louise Turner N.D. Hort

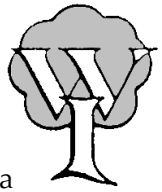
Robert Mogridge R.H.S. Cert Hort

Tel 01392499074 Mob 07811781137

e-mail: info@gardenlandscapes.co.uk

www.gardenlandscapes.co.uk

Whimpe Women's Institute

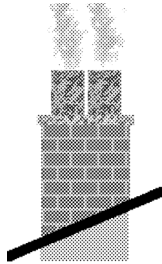


Members of Whimpe Women's Institute have again enjoyed a variety of activities over the past two months. The August meeting departs from our usual pattern and takes the form of an afternoon tea party. This was held at the home of our President, Ann Bowden, on a lovely summer day. Approximately 30 members enjoyed the beautiful garden and an excellent 'bring and share' tea provided by those present.

The summer outing was a visit to Forde Abbey and Gardens. Again the weather was kind and all appreciated the opportunity to see this historic family home and the superb gardens.

In September the speaker was Sue Cartright who talked on the topic of nutrition. We were delighted to welcome three guests to the meeting. We are always pleased to welcome visitors and potential new members. For further information please contact Ann Bowden (823450).
Rosemarie Burrows

Chimneys Wood Burners Fires



Swept, Installed, Repaired,
Lined and Built

"All your chimney needs"

Alf Butler

Tel: 01404 841611

A fully insured and HEATAS
registered Company

ARK POTTERY

STUDIO, SHOP & GALLERY

**Wide choice of affordable
pottery direct from the potters, all
designed and made on site. Also
sculptures, pictures and cards.**

ENTRANCE & PARKING FREE

- Have a go on the wheel!
- Pottery Parties
- Commissions
- Team Building Groups

Find us just off the Ottery/Sidmouth
Road at Wiggaton (Follow the brown
tourist signs from Ottery.)

OPEN DAILY 10 a.m.- 5 p.m.



What could you do with ten minutes of your time?

'The Mortgage Makeover'

Ten minutes is all it takes to determine if you're paying too much for your mortgage.

Ten minutes is all it takes to see whether we can save you thousands of pounds.

Ten minutes is all it takes to decide whether you can afford to pay your mortgage off early.

Ten minutes is all it takes for impartial, independent financial advice.

Contact Stephen Clare on 01404 823375

or email – stephenclare@thinkpositive.co.uk

or by post - Longfield Whimble EX5 2TF



OVER 65's PARTY

1st December 2005

The ladies of the village would once again like to thank the Cricket Club for raising £150 from a Bingo session, this is the 13th year they have helped raise money for the Over 65's Party, and to the Thirsty Farmer for their donation of £51.


Also, many thanks to Bob and Yvonne Roberts for their generous contribution of £50.

There will be a meeting in November to make final arrangements for the Party – watch for posters

THIS IS YOUR INVITATION

The Ladies of Whimple Village invite the Villagers of Whimple who are over 65 years of age (before Friday 1st December 2006) to a Christmas Party at the Victory Hall, Whimple on Friday 1st December 2006 at 7.00 p.m. for 7.30 p.m.

Please complete the slip below, cut it out and return it to Lucy Smith by Monday 27th November.



To: Mrs Lucy Smith
2 Clarence Villas
The Square
Whimple

I/We will be attending the Over 65's Christmas Party on Friday 1st December

Name(s) _____

Address _____

I/We will require transport : Yes/No



WHIMPLE HERITAGE CENTRE SHOP CHRISTMAS OPENING

The Heritage Centre Shop will be open
on the following dates:

25th November 10.00am–12.30pm

2nd December 10.00am–12.30pm

For sale will be Whimple calendars, mugs, plates, books and
much more—buy your Christmas presents and support the
History Society at the same time!

OAKS & PARTNERS

AUCTIONEERS & VALUERS

invite entries for their regular sales of antique & later furniture, porcelain, silver and
plate, jewellery, metalware, paintings & prints and items of general interest at

The Old Tannery, Exeter Road, Cullompton

[We're easy to find on the Honiton side of Junction 28 of the M5]

The saleroom is open for receipt of items for sale
Monday to Friday between 9.00 am and 4.00 pm
Bring items along for valuation on a Friday morning

We will be pleased to call to your home
to discuss valuations without obligation or collect items for sale
Individual items to full house clearances

Tel 01884 35848 for further details or **01404 - 814540 / 812356** after hours
We will attend Sandfords, Whimple (by kind permission of Mrs Pratt) from 10.30 to 11.30am
on the first Wednesday of each month to discuss valuations or collection of items for sale

Sale catalogue can be seen on <http://www.invaluable.com>

e-mail address roger.shenton@btclick.com

EASY TO FIND LOVELY VIEWS

Alec and Christine Janaway

Tel/Fax: 01404 823019

Email: BandB.Busybee@Virgin.net



BED & BREAKFAST

B

*A warm welcome awaits at
"Mellifera" Church Road*

WHIMPLE Exeter

usy East Devon EX5 2TF

& Ideal for Coast, City or Airport

Transport to - from

Airport by arrangement

Private/Holiday Car Parking

B

ee En-suite Rooms

Guests Day Room with

Excellent Facilities

£16/£18-Cheaper for longer stays & Senior Citizens

1/2 mile Train or Bus

"FLORAL ENCHANTMENTS"

Designer:

Morven Fletcher

Flowers for all occasions

Floral designs to your
specification

Specialist in Wedding Floristry

Bodley Bridge Cottage

London Road,

01404 822049

**Historic
Buildings**

**Advisor on Conservation Repair /
Sympathetic Alterations**

**Vernacular Buildings-
Assessment, Proposals & Options**

**Listed Buildings-
Planning Applications**

**&
Building Regs**

Michael Board

Building Consultancy Ltd

**Modern
Buildings**

Little Cot

Hembury Fort

Honiton

Devon

EX14 3LE

Telephone

01404 841699

**Design Service for
New Build Home
Projects**

**Extensions and Alterations to
Properties-
Designed & Drawn for
Planning/Building Regs**



LET'S ALL SAVE MONEY!

The very large increases in energy charges over the last 12 months caused me to do some calculations on the cost of my home security lights.

We all are aware that burglars don't like working where they can be seen, so all good neighbourhood watch advice is to make our properties less likely to be attractive by having security lighting as a deterrent.

Many villagers, and I am one, use a traditional 60 watt tungsten security light with a photo-electric cell, which automatically switches on at dusk and off at dawn.

At today's electricity prices I was staggered that over a year with the security light burning for on average 10 hours per night, the cost was more than **£26/year**.

By replacing the traditional bulb in my security light with an energy saving light bulb, with the same light output, then the cost **reduces to £5/year**.

More than an 80%+ saving!

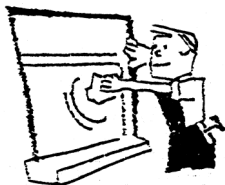
The bulbs shown below are the 2 types that are readily available and although a little more expensive to purchase they last very much longer, and of course give an 80% saving on energy.



As a guide the lighting equivalents are:

60 watt traditional bulb = 11 watt energy saving bulb.

John Munslow 823456



WINDOW

CLEANER

PAINTING & DECORATING

TILER

PATIO PRESSURE CLEANING

SHED ROOFS - RE-FELTED

GENERAL HANDYMAN

(Excellent references if required)

For that personal service

Phone Mr Evans on 01404 822120

N C HAMLYN

FARM MACHINERY
REPAIRS AND SERVICE

(Welding, fabrication etc.
and garden wrought iron work)

Workshop facilities and mobile
service

Contact Nigel Hamlyn on 01392

466720

or 07702 431244 (mobile)

Paynes Farm
Broadclyst

Tree & Hedge Planting & Aftercare ●

Contract Work ●

Garden Maintenance ●

Herbicide Application ●

Chainsaw Crosscutting ●

Strimming ●

Brushcutting ●

Call Daniel On:
07974 385834



DRM

WILLIAMS
TREES & GARDENS

WORKING WITH

PERRIE HALE
FOREST
NURSERY



M.J.COLES ENGINEERING

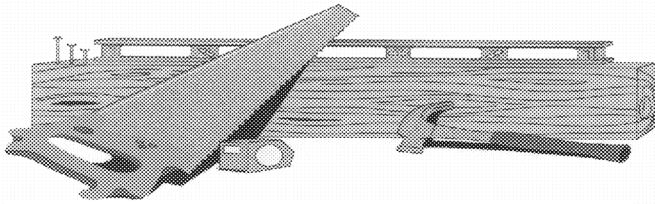
(R.T. I.T. B. & CITY & GUILDS)
SERVICING. ENGINE RE-BUILDS .
WELDING MOT. RECOVERY.
PICK UP SERVICE
FRIENDLY LOCAL MECHANIC
15 YEARS EXPERIENCE
FOR ALL YOUR MOTORING NEEDS

CALL

MARC

ON

WHIMPLE 822095 OR
07785 740473 (MOBILE)



fencing, pergolas, gates, trellis
and sundecks.

01404 823002

free estimates and over 25 years of quality
workmanship
also patios, and brickwork.

**P. R.
S
M
I
T
H**



JOIN US AT

ANDY'S RESTAURANT

PART OF THE INTERNATIONAL SWIMMING SCHOOL, STRAIGHTWAY HEAD, WHIMPLE
A LA CARTE MENU

BAR SNACKS

PARTIES CATERED FOR (UP TO 30 PEOPLE) - CREATE YOUR OWN MENU

SUNDAY LUNCHES

CHRISTMAS PARTIES

BOOKING ESSENTIAL!

ALSO ASK ABOUT OUR WIDE RANGE OF ACTIVITIES INCLUDING:

ADULT SWIMMING LESSONS, AQUAFIT

CHILDREN'S SWIMMING LESSONS, MOTHER & TODDLER SESSIONS, CHILDREN'S PARTIES

SAUNA, SOLARIUM

*AND NOT FORGETTING OUR 'NATURE'S WAY' BEAUTY CLINIC WITH A FULL RANGE OF
TREATMENTS INCLUDING MESSAGES, WAXING, AROMATHERAPY, FACIALS, MANICURES ETC.*

TELEPHONE NOW ON: **01404 822196**

OR CALL IN AND HAVE A LOOK ROUND!



AMUSED MEDITATION FOR THOSE WHO THINK THEY ARE ETERNALLY YOUNG!!

The corner of The Square is twice as far as it used to be when we moved here and they have added a slope I had *never* noticed before

I have also stopped running after the bus, it always seems to drive off quicker these days

I think *they* have made the steps in my staircase steeper than they used to be

I have also noticed that the print in the newspapers and telephone directory is much smaller

It is no use asking people to speak more loudly and slowly. Everybody seems to speak more quietly and it is difficult to follow a conversation

What about the clothes, they seem to make them so tight on the waist and hips that it really is uncomfortable

Even young people have changed – they are younger than we were in our youth

On the other hand, people of my age seem to be so much older than me

The other day I met an old acquaintance, she had aged so much that she did not even recognise me

This morning I meditated on these findings as I looked into the mirror and I am *absolutely sure* that the quality of these mirrors is not what it used to be forty years ago

I do hope my thoughts on my daily experiences will make you smile!!

Translated from a French poem: -

Whoever who all day long is as busy as a bee

Who is strong as an ox

Who works like a horse and

Who come evening is dog tired

Should go and see a vet

Because it is most likely that he is an ass!

Edith Marie-Louise Grout

Eric Smith

Lucy, Roger, Judy and family of the late Eric wish to thank all kind friends and neighbours for their cards and messages of sympathy. Also sincere thanks to the many friends who attended the Funeral Service and to those who gave donations to the Whimple Church Fabric Fund and The Ottery Hospital League of friends. Our gratitude goes to the carers and the doctors and nurses at both the Ottery Hospital and the Coleridge Medical Centre. Thanks also to Rev. R. Wilkinson and Mr Graham Hansford for their care and help.

Inspections - Pruning - Felling - Replanting

Major Tree Services



APPROVED
CONTRACTOR

01404 822993

www.majortreeservices.co.uk

**JULIAN
WILSON**

Electrical Contractor

1 Higher Woodhayes
Farm
Whimble

Tel: 01404 822641

**Your Friendly local
Bed and Breakfast**



**David Brown
Holway Barton
Whimble
Exeter**

Telephone: (01404 822477)

Visiting Practice

Day and evening
Appointments by arrangement

QUALIFIED



CHIROPODIST

BOB SHEEHAN MScCh MBChA

**3, Railway Cottages
Whimble
Exeter**

01404 822372

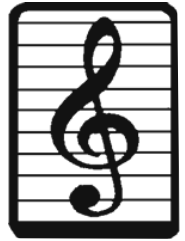
Orchard Harmony News

Wednesday 12th July saw 20 excited ladies awaiting the arrival of men unto the fold!! Eight men in total turned up for duty, and have made a significant difference to our group!

Our concert will be on Saturday 9th December at 7.30pm in St Mary's Church, Whimple. The programme will consist of The Nelson Mass by Haydn, together with a selection of Christmas music, including some for the audience to sing along to!

The choir will be joined by four professional soloists including Heloise West (Soprano), together with Phil Hobbs and Julian Sutton, both members of the Exeter Cathedral Choir. There will also be a professional chamber orchestra led by Anna Cockroft, and local professional organist Robin Davis. This will be a special concert, watch this space for further details.

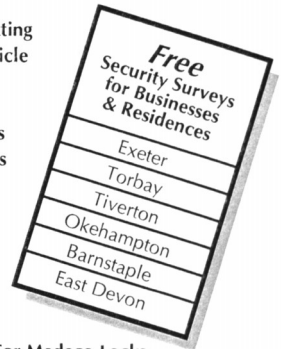
It is not too late to join us!! If you would like to sing in the choir for this special concert please contact **Julia Green** on 01404 823585. We rehearse on Wednesday evenings in the church, and would love to see you there.



Complete Locksmithing Service



- 24 Hour Emergency Service
- Standard & Computerised Key Cutting
- Duplicate Keys Cut For Any Vehicle
 - Car Transponder Keys Cut
 - 24 Hour Lock Out Service
- Replacement Lock Installations
- Aluminium & Upvc Door Locks
 - Master Key Suites



MASTER LOCKSMITHS

- ☛ Free Security Assessments
- ☛ Locks Supplied & Fitted
- ☛ Safes Opened
- ☛ Burglar Alarm Installations
- ☛ CCTV Systems



Agents For Medeco Locks



01392 411887
FAX 01392 424817



A Wide Range of Security Products
Available For Demonstrations At....

- 131 Sidwell St. Exeter EX4 6RY
- Unit 1, The Space Place, Alphinbrook Rd. Marsh Barton, Exeter.

www.guardian-security.sagenet.co.uk



DEVON HOME IMPROVEMENTS

LIMITED

“Why Move - Home Improve”

Your local home improvements specialists for all those building and maintenance needs

Devon Home Improvements can provide you with hands on design and planning, together with a comprehensive supply of tradesmen and materials

We pride ourselves on our expertise and we believe we offer the most friendly and efficient service at very competitive rates.

- **Kitchen & bathroom design / installation**
- **Exterior & interior decoration
incl. plastering services**
- **Landscaping, patio, decking, garden walls,
garden structures**
- **P.V.C.u Facia & guttering incl. cladding**
- **Garage door installations**

Call today for your no obligation quotation

01404 823880

Or visit our website at

www.devonhi.com

Organisations in Whimble

Whimble Parish Council	
<i>Chairman:</i> Sara Randall Johnson	822524
<i>Clerk:</i> Mrs Gerri Turner, Penraddon, Hand and Pen	823385
St. Mary's Church	
<i>Contact:</i> Rev. Rob Wilkinson	822521
Devon County Councillor	
Mr. D.Button,	
East Devon Councillor	
Andrew Dinnis	850363
Whimble County Primary School	
<i>Headteacher:</i> Mrs. D. Brice	822584
<i>P.T.F.A. Chair:</i> Jenny Sanders, 1 The Croft	823015
Whimble History Society	
<i>Chairman:</i> Richard Webber	822038
<i>Secretary:</i> Roger Smith	822244
Whimble Mothers Union	
Margaret Burrough Gateshayes Farm	822257
Whimble Pre-School & Toddler Group	
<i>Chair:</i> Sally Young 11 Chard Ave	823228
<i>Playleader:</i> Jo Westney Glencroft, Church Road	822168
<i>Toddlers:</i> Karen Bell 5 Lower Woodhayes Court	823443
Whimble Womens Institute	
Mrs. Ann Bowden, Bradcott House, The Green	823450
Whimble Over Sixties Club	
Mrs B. Iball, 11 Rectory Close	822905
Whimble Recreation Trust	
<i>Knowle Cross Sports Ground.</i> Mr P. Garraff, Luppit	891206
Whimble Village Produce Association.	
<i>Chairman:</i> Adrian Williams, 47 Slewton Crescent	822430
Whimble and Broadclyst Young Farmers' Club	
Mr. R. J. Burrough, Gateshayes Farm	822257
Whimble Football Club	
<i>Chairman:</i> Ben Silk	822389
Whimble Tennis Club	
<i>Secretary:</i> Judith Imbo	823240
<i>Treasurer:</i> J. Hughes	822659
Whimble Cricket Club	
Mr. R.J.Smith	822244
Whimble Victory Hall Management Committee	
<i>Secretary:</i> Pam Scanlan, Albecq, The Green	822262
<i>Booking Sec:</i> Fiona Randall	822793
Whimble Post Office	
Alison and Jim Creasy	822359
Whimbletons	
Emma Palmer	823083
Neighbourhood Watch	
John Munslow, 44 Slewton Crescent	823456
St. Mary's Bellringers	
<i>Captain:</i> Liz Silk	
Whimble Scout Group	
<i>Group Scout Leader (and Marquee Booking):</i> Alex Spry	822844
Otter Rotters	
Hugh Roberts	822651
Whimble Book Group	
Katy Howard, 9 Whiteways Close	823038

The Whimble News Team

Editor

Ed Hitchcock 823194

Production

Bob Scanlan 822262

Naome Glanville 823167

Vivienne Leonard 822415

Delivery

Ed & Nicky Hitchcock 823194

Advertising

Julie Millward 823985

Community diary

Nicky Hitchcock 823194

Treasurer

Miles Leonard 822415

LIVING AND SELLING LOCALLY



HALLS ARE PLEASED TO OFFER THE FOLLOWING SERVICES

- FAMILY OWNED BUSINESS
- STRONG LOCAL KNOWLEDGE
- SUPERB COLOUR DETAILS
- HIGH IMPACT ADVERTISING
- FREE VALUATIONS
- ACCOMPANIED VIEWING
- FLOOR PLAN SERVICE
- RESIDENTIAL LETTINGS

TEL: 01404 812000

View all properties on the UK's No.1 website: www.rightmove.co.uk



15 Broad St, Ottery St Mary, EX11 1BY

Tel: 01404 812000 Fax: 01404 815777

Email: halls@eclipse.co.uk Web: hallsestateagents.com

The New Fountain Inn

Whimble, Devon



A Traditional Olde Freehouse Village Inn

*As recommended by CAMRA ,
The Good Beer Guide, The Real Ale Guide
and the Quiet Pint Guide*

*Real Ales
Home Cooking*

Lunchtime & Evening Meals 7 days a Week

*Sunday Roasts etc - Vegetarian Choices
Handmade Desserts, Children's Menu
& Toddler Portions*

*Join us for a Friendly Drink, Bar Snack or
an A La Carte Meal*

Bookings are Advisable

Tel: 01404 822350