

# *Whimple News*

---



---

April/May 2007

---



**QUIZ NIGHT EVERY OTHER  
SUNDAY**

**Starts at 8.30pm  
EVERYONE WELCOME!**

# The Thirsty Farmer

**WHIMPLE, EXETER, DEVON, EX5 2QQ**

**Telephone: 01404 822287**

**TRADITIONAL HOSPITALITY AT ITS BEST**

**Varied A La Carte Menu changed daily  
alongside traditional 'Farmers Favourites'**

**\*Great Selection of fine Wines\***

**Open all day Friday, Saturday & Sunday**

## **LIVE MUSIC DATES**

**Fri 6th April - Plan B**

**Fri 4th May - Max!**

**Fri 25th May - The Hurricanes**

**Fri 29th June - Carnaby Street**

# WHAT'S ON IN WHIMPLE

## April

- 6th Live Music 'Plan B', Thirsty Farmer
- 16th Blood Donor Session, Feniton School, see advert for times
- 21st Soup and Sarnie Lunch, Victory Hall, 12.00-1.30pm
- 22nd SClub & Impact, Scout Hut, 10.45am
- 22nd Contact, Picardy, 6pm
- 23rd Parish Council Meeting, Victory Hall, 7.00 pm
- 28th Impact Clubnight,

## May

- 4th Live Music ,Thirsty Farmer - Max
- 5th Barn Dance in the Blossom, 1 Higher Woodhayes, 5.30pm
- 6th Celebration Service, Whimble Church
- 6th Plan B at the Cricket Club . See posters for details.
- 12th VPA Plant Sale, Village hall, 10.00am
- 13th SClub11 and Impact, Scout Hut, 10.45am
- 13th Contact, Picardy, 6.00pm
- 19th Soup and Sarnie Lunch, Victory Hall, 12.00-1.30pm
- 25th Live music Thirsty Farmer -Hurricanes
- 26th/27th Talaton Open Gardens, see page 42 for details
- 27th SClub11 and Impact, Scout Hut, 10.45am
- 27th Contact, Picardy, 6.00pm
- 29th Clothes Recycling, Scout Hut

## June

- 3rd Celebration Service, Whimble Church
- 19th Parish Plan Update, Victory Hall, time tbc
- 29th Live music, Thirsty Farmer – Carnaby Street
- 30th Village Week starts

## St Mary's Church

For Easter services see page 34

### Monthly Programme of Services

1st Sunday	8.00am	Holy Communion
	11.00am	Celebration Service
2nd Sunday	11.00am	Holy Communion
	10.45am	Sclub11/Impact in the Scout Hut
3rd Sunday	8.00am	Holy Communion
	11.00am	Morning Service
4th Sunday	11.00am	Holy Communion
	10.45am	Sclub11/Impact in the Scout Hut
5th Sunday	11.00am	Joint Benefice Communion

**PETER SALTER A.I.R.T.E.**

**MOBILE MOTOR ENGINEER**

(Member Institute of Road Transport Engineers)

Servicing & M.O.T. Preparation  
Engine Overhauls & Bodywork Welding  
Cars & Commercial Vehicles

**Telephone: Whimble (01404) 823054**

# Talaton Inn

SUNDAY LUNCH - DAILY SPECIALS  
BAR MENU AND SNACKS  
RESTAURANT OPEN TUESDAYS TO  
SATURDAY EVENING



**Good Ales, Good Food  
Pop in and say Hello**

**Tel: 822214**

## Ed the Ed

Welcome to the April/May edition, packed with lots of things going on in the village, plus the build up to Village Week in July. It is really heart-warming to see so many activities, and involving so many different people in the village. Well done!! I am delighted to see that Ann Bowden has agreed to take over Lucy Smith's work with the Over ^5s Christmas Party...Peter had better get some marigolds training in for the washing up.

Another pantomime script gets filed away, and the Dame dresses return to the wardrobe...all is quiet in the thespian arena – no thanks to the motivational support I received from the current Mrs H. I put it to you, gentle reader, how would you feel on the afternoon of the final performance, when your good lady turns and says "So it's our last afternoon together..." When I enquired about what this meant, I was told " It's the last night of the panto, and you normally make a prat of yourself, so don't be surprised to find the locks changed at home tonight." Is this how all pantomime dames are treated? This is the same lady who was to be found with her head in her hands during the performance as I did my usual 'off roading' away from the script, as she feared for her reputation and sanity. Julie Millward has donned her reporter's raincoat and records her view of the Friday performance on Page 17. I almost wish I had been there!

I would like to bid a fond farewell to Naome Glanville, of the Whimble News Team, who has moved out of the village. Naome brought her enthusiasm and energy not only to our team, but also to the History Society, and made some great contributions to both organisations, and we wish her well for the future.

A big 'thank you' to our hardy band of deliverers who have braved the elements over the last few months, fighting their ways through famine and plague to get the News to your doorstep. And a big 'welcome' to a new reader, Ada Mingo in a Sidmouth Residential Home, who used to live in Whimble but now loves to keep up with the news of our village via this magazine.

We love to have contributions from anyone in the village, and we have some great examples from members of the youth club in this issue. We welcome any comments on local issues, so please put pen to paper etc by Monday 14 May, and leave it at the Post Office, with young Jim and Alison, or direct to the grim reaper/sportscar toyboy on bob.scanlan@eclipse.co.uk.

Please support all the events planned for the village –the Maypole dance at Sue and Julian's place sounds great. I know that the dancing was a great laugh last year, assisted by the beer and pork rolls!! I am disappointed that they still won't let me wear the high heels. Get those dancing legs ready.....

**Ed H.....**your local rhythm king and token belly dancer extra-ordinaire!

Please use the Whimble Diary held in the Post Office for checking availability of venues and booking events.

If your Association has an event which you would like listed above please contact **Nicky Hitchcock** on 823194 or e-mail [nickyjhitch@tiscali.co.uk](mailto:nickyjhitch@tiscali.co.uk)

# Halos

(formerly known as Waves)

## UNISEX HAIRDRESSERS

**Advanced Colour Courses with L'Oreal and Wella**

**Open: Tues - Saturday: Late Night by appointment.**

**Free parking by kind permission of the Thirsty Farmer**

**TEL 01404 823400**

**New Inn Cross, Whimble. Devon. EX5 2TS**

# Liberte

## HOLIDAYS

**...Your French connection South of France:**

**Long lazy sunny days in a beautiful French villa, with communal pool right on the Mediterranean coast.**

Sleeps up to six and includes patio garden with barbecue. Satellite TV, washing machine, bike and roller-blade hire, wind surfing, kite surfing and sand sailing, as well as horse riding and go carting and on the edge of a nature reserve.

Situated near all major airports (Flybe, Ryanair, Easyjet) and airport collection available. Auto train to Narbonne from Calais; 10 min drive from motorway. Prices from £70 p.p./during July and August (price based on 6 people sharing). Also countryside B & B available and assistance with house searches and relocation available.

Please visit: **[www.liberteholidays.com](http://www.liberteholidays.com)** or phone Janine or Paul on

**00-33-468-44-12-08**



# Whimple Post Office News



We would like to thank all of you that have given us your support over the past few months. We have been left totally in the dark as regards to our future in the village but are determined to continue to do our best for you all, for as long as we can.

Last month our emphasis on bill payments did result in a few more customers and so was a worthy exercise, and this time we would like to remind you about the banking service we can provide.

Cheques paid in before 4.30 p.m. will be despatched that day(10.30 am Tuesdays/ Saturdays), but will take a day longer than if paid into your bank over the counter.

If you have a basic bank account with any other high street bank you should be able to access your money from the post office, however services may vary so please ask for a leaflet.

	Cash Withdraw	Balance Enquiry	Cash deposit	Cheque deposit
	(card and pin)			
Alliance and Leicester	yes	yes	Yes with card	Yes with paying in slip
Bank of Ireland	yes	yes	Yes with card, or paying in slip	Yes with paying in slip and envelope.
Barclays	yes	no	Yes with paying in slip	Yes with paying in slip
cahoot	yes	no	Yes with paying in slip	Yes with paying in slip
Co operative	yes	yes	Yes with card	Yes with paying in slip
Nationwide	yes	yes	No	No
Lloyds	yes	yes	Yes with paying in slip	Yes with paying in slip
Smile	yes	yes	Yes with card	Yes paying in slip

We are now a 'on demand branch' for Euros. We keep the Euros on the premises and are able to exchange them for sterling immediately, this had a very encouraging start and we hope you will consider the Post Office when planning your holiday trips this Spring. Other currencies can be ordered within 24 hours.

We are currently stocking 'Easter Greetings from Whimple' cards for the first time this year, we hope you like them.

Thanking you all for your continuing Support.

**Jim & Alison.**

# FROM MY WINDOW IN THE SQUARE

Edith Marie-Louise Grout

April ... Spring has Sprung, And fairey of waking mirth  
From whom our joys ensue, the early gladder of the earth  
Thrice welcome here anew, with thee the bud enfold to leaves,  
The grass greens on the lea, and flowers in the tender boon receive  
To bloom and smile with thee

As we had such a mild winter, the grass is already of a lush green and needs a good cut. April is renowned as an unpredictable month weather-wise, but who knows with the noticeable change in our climate. April also sees nesting in full swing and yet I notice a great activity in this the month of February. Every morning, come rain or shine a blackbird is perched on top of the climbing rose, gives me the most enchanting concert I could hope for which wakens my mirth.

Easter this year falls at the beginning of April. It is the festival of hope and resurrection which is abundantly mirrored in nature. Everything is renewed, fresh and alive. In my garden there is a very elegant silver birch which grows from strength to strength and that is where I often sit in contemplation. Its old name was 'Lady of the Woods' because it is womanly, constant and friendly. It is always the first to have leaves in spring and is also known as the tree of purification. I am sure it will outlive me as silver birches are known to be more than a hundred years old. It is most fairie like, being airy and light with foliage, branches dancing upon the breeze attracting a great number of insects which flutter around.

This year sees the 100th Anniversary of the Scout Movement and I hear from Alex Spry (our scout leader) that Whimble was one of the first groups to be formed as General Redvers Buller from Strete Raleigh House was a friend of Robert Baden-Powell (founder). They met during the Boer War where Baden-Powell held a siege at Mafeking and it was then he nurtured the idea of a movement as he had to send scouts to reconnoitre the terrain of enemy lines.

The centenary was marked with a cathedral service in Exeter on Thursday, 23rd February which was full to capacity and was conducted by our Bishop, the Right Reverend Michael Langrish. There will be many events in the months to come, especially on St Georges Day (23rd April) the Patron Saint of England and the Scout Movement. There will be parades, a gang show at The Barnfield Theatre, camps at Bicton and Powderham as well as a jamboree in Essex where 40 thousand scouts From all over the world will be camping. There will be special scout stamps issued in July and I am sure they will be on sale at our local Post Office. And finally, a scouting sunrise ceremony will take place on 1st August outside Exeter Cathedral when youngsters renew their promises and display their skills in public. This will help the young people grow in confidence for later life. The movement went through a slump in attendance for a while, but it seems to have grown in popularity again recently which is good news.



Our Square has been so beautiful this year. Members from our WVPA planted daffodils and crocuses in the autumn. From my window I can see clumps of daffodils in the green grass around the babbling brook. Not only do I find solace, relaxation and peace in my garden but the joy of that floral display gave me great contentment.

When you think of the Garden of Eden it expresses a magical sphere from which evil was excluded and I find that very true because my garden is an inexhaustible source of inspiration for my articles.

For centuries artists have used the motif of a garden in various interpretations. Impressionists like Claude Monet have lushly planted gardens with great imagination in order to depict them. Only once a year, (yes, only once!) the world around us shows forth its hidden treasures and in a manner, manifest itself. There is a sudden rush and burst outwardly of that hidden life and that's what the Easter story is all about – resurrection.

Now it is the turn of the merry month of May to show forth its beauty.

My mind lets off a thousand things, like dates of wars and deaths of kings  
And yet record the very hour, it was noon by yonder village tower  
And on the last blue moon in May, the wind came briskly up this way  
Crisping the brook beside the road, then pausing here set down its load  
Of pine scents and shoot listlessly, petals from that wild rose tree

This is a scene I witness often from my window in The Square. I wonder if one day my dream will come true to have The Square bedecked from Spring to Autumn with vivid flower displays and win the Britain in Bloom award for Best Kept Village – that would be something to be proud of.

I have an old hawthorn which seeds itself all over the place. Hawthorns are inextricably linked with the month of May. Most country customs celebrating May Day have gradually disappeared, although there are still some places which never give up such as The Hobby Horse in Padstow. It was the custom to 'go A-maying' and it is chronicled that Henry VIII went A-maying from Greenwich to Shooters Lane with his then Queen Katherine accompanied by many lords and ladies.

In Suffolk the first person who finds a branch of hawthorn in full bloom is rewarded with a dish of cream for breakfast. I have never heard of a similar custom in Devon and yet we have such delicious cream and plenty of hawthorns. In French it is called Epine Noble or Noble Thorn. It is well known that hawthorns are well favoured by nesting birds as it comes into leaf earlier than other trees or hedges. It affords a great deal more protection for nesting, in addition to being a very rich source of insect food which the birds relish.

There is one custom still very alive on May Day in Oxford when the choristers of Magdalen College greet the sunrise at 6 o'clock with a Latin hymn from the top of the tower, followed by a peel of bells and dancing in the street. Quite a sight!



## The Veterinary Clinic, Whimple

Consultations by appointment.

We also offer routine surgery and dental treatment.

Please call the surgery to arrange this.

Surgery times:

Monday and Wednesday: 8.45am - 9.15am

Monday to Friday: 4.30pm - 5.30pm

Saturday: 11.00am - 12.00noon

For an appointment and for all veterinary enquiries, please call 01404 823230

# *West One*

**Hair Design**  
**01404 814 913**

**For Ladies and Gentlemen**

**3, The Old Village Hall, West Hill Road, West Hill,**  
(Nr West Hill Garage) **Free Parking**

Ladies cuts	from £8.00
Men's cuts	from £6.50
Children	from £5.00

Our qualifications include Hairdressing NVQ 1 & 2

Diplomas in: Toni & Guy advanced Technical Colouring, Colour Correction, L'Oreal Colour Keys, Techniques 2000, Cutting and Perming.

**Opening:** Monday, Wednesday, Thursday, Friday & Saturday.

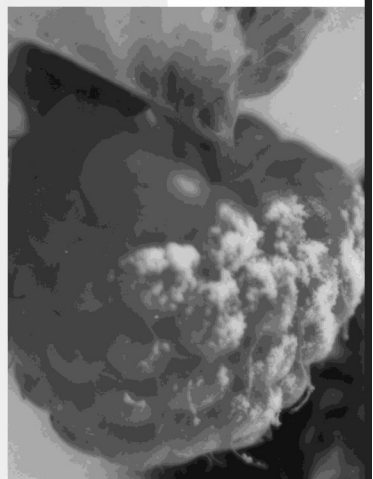
For an Appointment Please call **01404 814913** or Call in for Free Consultation.

# whatever the occasion

The Jack In The Green Inn, one of Devon's finest restaurants, is pleased to support the village Magazine The Whimple News.

Our award winning food is prepared with the finest ingredients by our uncompromising chefs.

So from bar snacks to a la carte our sumptuous meals suit every occasion and celebration.



*...we'd like you to come and see us*

THE JACK IN THE  
GREEN INN

Rockbeare, Near Exeter, Devon EX5 2EE.  
Telephone: 01404 822240 [www.jackinthegreen.uk.com](http://www.jackinthegreen.uk.com)

# MILESTONE SERVICES

TEXACO GARAGE WHIMPLE

Welcome to



-o-

GROCERIES - FROZEN AND CHILLED FOODS - FRUIT AND VEGETABLES  
WINES BEERS SPIRITS- FRESH BAKED BREAD - HOT SNACKS AND DRINKS  
NEWSPAPERS - MAGAZINES & MUCH, MUCH MORE

-o-

**LOOK OUT FOR OUR MONTHLY SPECIALS -SELECTED LINES AT  
SUPERMARKET PRICES! (EG. 3 BOTTLES OF WINE FOR £10 )**

-o-

**JOIN OUR DVD CLUB**

(MEMBERSHIP FREE) RENTALS FROM 99P

-o-

**PAYPOINT AGENT**

PAY YOUR BILLS - TOP UP YOUR MOBILE - TV LICENCE  
ELECTRICITY KEY CHARGING ETC

-o-

**CASH MACHINE IN STORE**

-o-

WE ALSO SELL CALOR GAS - COAL - LOGS - CAR CARE PRODUCTS -  
GARDEN STONWARE & COMPOSTS.

**FUELS AND OILS AT COMPETITIVE PRICES**

-o-

**LONDIS at Milestone - Best Value Locally**

-o-

**OPEN UNTIL 10.00PM (8.00PM on Sundays)**

Telephone (01404) 822454



## Whimple Primary PTFA

Our children are enjoying the efforts of last years fundraising, with brightly coloured playground games, sand and water trays and a new sun shelter in the Key stage 1 playground.

This year our PTFA has purchased a maypole to resurrect a village tradition. . We will be holding a BBQ for children, parents and friends at the end of the summer term. We contribute towards extracurricular events such as the in-school Christmas pantomime, the KS2 residential trip and the teambuilding adventure challenge.

We are hoping to help fund the provision of an outdoor classroom

We hope you can enjoy our planned events whilst helping us reach our fundraising targets.

### Diary dates:

**King and Queen Raffle** Tickets £1 each sold by KS2 children between 19th March and Fri 27th April.

**Barn Dance in the Blossom** Saturday 5th May gates open 5.30pm.  
At 1 Higher Woodhayes Farm EX5 2TQ by kind permission of Mr & Mrs J Wilson

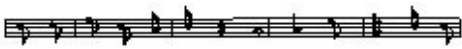
Featuring a display of maypole dancing by Whimple Primary children, at 6pm in the orchard, and crowning of the May King/Queen.

**Clothes Recycling in conjunction with Whimple Scouts:** bags will be delivered door to door with collection point Whimple Scout Hut on Tues 29th May. Anyone unable to deposit clothes at the collection point please contact Mrs N Harris on tel: 01404 823873, and we will try to collect from you.

**Village Week** Saturday 30th June – Sunday 8th July, with Village Day on Saturday 7th July

**School end of term BBQ** Friday 20th July

**Fashion Show** Friday 21st September, Victory Hall, Whimple 7.30pm



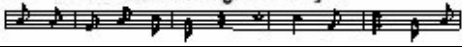
# SLACK-MA GIRDLE

for  
Ceilidhs, parties, weddings,  
Christmas sing-a-longs.  
The local band  
for all occasions



Tel 823083

Not as interesting as Granny's!



*Aromatherapy*



*Therapeutic Massage*



*Hopi Ear Candling*



*Sally Baker C.H.Ed (Dip Mass)  
(Dip Aroma)*

*Complementary Medical Association Registered*

*Whimble*

*Tel: 01404 822315*

*Mob: 07870 112071*

*email: salbaker63@hotmail.com*



## **Heritage Taxis**

**At your service  
01404 81 55 44**

## **Tom Vanneck**

**Furniture Restorer**



**French Polisher**

**Modern & antique  
commissions undertaken.**

**Tel. 01392 860502**

**Mob. 07812810846**

# T4D THANK YOU

A great big THANK YOU to all those who supported our “Tea for Diabetes” (T4D) tea party on 13th February, in aid of the local charity group for children with diabetes. We had a very lively afternoon. It was great to see everyone and have a good chat, and at the end we were very pleased to find that we had raised £122. The other aim was to raise awareness of the condition, particularly the fact that diabetes is not only a disease that can come on gradually in old age or as a result of poor diet – it can also strike out of the blue in childhood in its most extreme form, for unknown reasons, requiring the sufferer to have injections and blood tests several times a day for the rest of their lives.

So many thanks once again to everyone who came along, and/or made donations of either cakes or cash!

**Alison and Richard Betts**

## WHIMPLE OVER 65's CHRISTMAS PARTY

For all those people worried about the continuation of this event - - panic not - - it will go ahead as usual. A few ladies have agreed to organise it and the hall is booked for Friday 7<sup>th</sup> December. We will be calling on all you willing volunteers a bit nearer the time, to cook, wait on table or generally be involved.

This is a village event, not associated with any particular group, so we hope many of you will be happy to help.

Many thanks to Lucy Smith for masterminding this event so successfully for the past 43 years - - I can't think why she needs a break !!

For any information contact **Ann Bowden** tel. 823450

# THE PENSION DRAWDOWN COMPANY

## INDEPENDENT FINANCIAL ADVISERS

FOR UNBIASED, QUALITY FINANCIAL ADVICE BASED ON YOUR  
CIRCUMSTANCES PROVIDING SOLUTIONS TO YOUR NEEDS  
INCLUDING

**SAVINGS    INVESTMENTS    PENSION PROVISION**  
**RETIREMENT OPTIONS inc ANNUITIES**  
**LIFE AND CRITICAL ILLNESS COVER    INCOME PROTECTION**

Contact: Bob Diamond at Waterlake Meadow, Church Road, Whimpe  
On 01404 822865 or Email [r.diamond1@ntlworld.com](mailto:r.diamond1@ntlworld.com)  
For a free initial consultation

Appointed Representative of The Burns-Anderson Independent Network PLC,  
which is Authorised and regulated by the Financial Services Authority

# Martha Mockford

## Quality kitchens at affordable prices

*manufactured and expertly fitted by our own staff  
better value for money than DIY stores*

**Also re-fronts & new worktops**  
**Carpets, vinyls and wooden flooring**

Complete, friendly service from a local family business

**Hotpoint, AEG, SMEG, Franke, Blanco**



# 01404 44189





# SINBAD THE SAILOR

Forgive me if I don't single out everyone that took part as I think this year's pantomime was a tremendous success – but certain performances could not go completely unmentioned. The storyteller (Kitty) kept up the pace, interjecting warmth, humour and correct lines when called for.

Sinbad (Joss) was tall and handsome as every sailor should be (I'll definitely be watching him with keen interest in the future), welcomed aboard The Clap of Doom by a *suspect* pair of very 'Jack Tars'. His quest was to find fame and fortune, eagerly helped along by a varying cast of pretty, young ladies happy to oblige, despite being thwarted by Geronimo (Tim) the evil genie.

Sadly for Sinbad, his main hindrance was his mother, played by the irreparable, irreplaceable, irrepressible and above all irresistible 'Panto Dame for Our Village' - Ed Hitchcock, whose verbal trajectory had us all rolling in the aisles! Pity me as he just *had* to bring up the sensitive issue of my Christmas pussy – but I shall try to forgive him (oooh err missus)!

The Harpies suitably gossipy and wicked were offering an injection of bawdiness and songs along the way, whilst the multi-talented Emma Palmer moved seamlessly from the band to her solo as Low-Lita (the loose woman) all this, as well as being hands on behind the scenes as Chairperson and in the production team (what energy)!

The strong supporting cast of children were spot on with their timing and word perfect (take note naughty adults – you know who you are).

A special mention goes to the two genuflecting monks, who for a pantomime debut - did exceedingly well raising a laugh before even opening their mouths advertising the Holy Grill. We look forward to more of the same for next year!

Hitchcock's Harem was a welcome diversion for us all. A few of the male audience nearby getting slightly hot under the collar, but that was by no means enough, oh no... we all gasped (fear, expectation?) as the 'vision' shimmied her way down amongst the audience. Up close one could clearly see the makings of the 'Panto Dame for Our Village' a kind of highbred Dame Edna Everage with Lily Savage. 'She' of absolutely no shame or inhibition parading around in a handsomely filled bra, stripy tights and miniscule belly dancing outfit giving it 'large' – and I mean LARGE!! I have to admit though, that we were all absolutely terrified that one of us might be singled out of the audience to join in – but thankfully not.

To The Whimbletons – I just want to say how much we (the audience) appreciate how hard you all have to work in bringing the 'smut' I mean 'spit and sawdust' to our Village Hall.

To those that did go – and whatever night you went on, I do hope you had as good a time as 'me and mine!' And to those that didn't go – you missed the rare treat of many local people just really having a good time! So please make the effort to support it next year.

# WHIMPLE

The Perfect Village

“A great community, good amenities and excellent accessibility”



We have a constant stream of enquiries for property of all types in and around Whimple.

**ASK FOR A FREE VALUATION**

01404 814306

[www.redfernsproperty.co.uk](http://www.redfernsproperty.co.uk)

Tim Wright

# Silly one liners

You invented TippEx, correct me if I'm wrong.

I bought some Armageddon cheese today, on the packet it said 'Best Before End'

I went to buy a watch, and the man said "Analogue". I said "No, just a watch".

I went into a shop and said "Can someone sell me a kettle?". The bloke said "Kenwood?". I said "OK, where is he"?

I went in to a pet shop. I said "Can I buy a goldfish"?. The guy said "Do you want an aquarium"?. I said "I don't care what sign it is".

I was in this restaurant and I asked for something herby. They gave me a Volkswagen with no driver.

I went to the doctor. I said "I'm frightened of lapels". He said "You've got cholera".

I met the bloke who invented crosswords today. I cannot remember his name, it's P something T something R.

I was reading this book today, 'The History Of Glue'. I couldn't put it down.

I phoned the local ramblers club today, and this bloke just went on and on.

My mate asked me "What do you think of voluntary work"? I said "I wouldn't do it if you paid me".

So I was in the jungle and there was this monkey with a tin opener. I said "You don't need a tin opener to peel a banana". He said "No, this is for the custard".

This policeman came up to me with a pencil and a piece of very thin paper. He said "I want you to trace someone for me".

So this lorry full of tortoises collided with a van full of terrapins. It was a turtle disaster.

I told my girlfriend I had a job in a bowling alley. She said "Tenpin"?. I said "No, it's a permanent job".

So I told my mum that I'd opened a theatre. She said, "Are you having me on"?. I said "Well we'll give you an audition, but I'm not promising anything".

I phoned the local builder today and said "Can I have a skip outside my house"?. He said "I'm not stopping you"!

So this cowboy walks in to a German car showroom and says "Audi"!

I met this bloke with a didgeridoo and he was playing Dancing Queen on it. I thought that's Aboriginal.

I was caught stealing things from the supermarket today while balanced on the shoulders of vampires. I was charged with shoplifting on three counts.

I bought a train ticket and the driver said "Eurostar". I said "Well I've been on telly, but I'm no Dean Martin".

So I went to the local video shop and I said "Can I take out The Elephant Man"?. He said "He's not your type". I said "How about Batman Forever"?. He said "No, you'll have to bring it back tomorrow".

# DC DECKING & JOINERY

*Quality Carpentry Services*

## BESPOKE HAND CRAFTED GATES

- *FREE ESTIMATES*
- *MANY REDWOOD DESIGNS*
- *SUPPLY & INSTALLATION*
- *TOTAL SECURITY*

## CARPENTRY

- *FREE ESTIMATES*
- *KITCHENS & BEDROOMS*
- *BUILT IN WARDROBES*
- *UPVC INSTALLATIONS*

*Many years experience,*

*Fully Qualified*

*Large Portfolio*

## QUALITY DECKING SERVICES

- *FREE DESIGN & PLANNING*
- *QUALIFIED INSTALLERS*
- *TREATED MATERIALS*

## JOINERY

- *HAND MADE GARDEN FURNITURE*
- *ANYTHING THAT NEEDS TO BE MADE OR REPAIRED*

*For a friendly, efficient & professional service please contact our team*

*Telephone : 01404 822126    Mobile: 07980 889968    Email: dcd decking@aol.com*

# Whimble Village Week 2007

This will commence on Saturday 30th June and village day will be on Saturday 7th July 2007.

The programme of events will be included in the next edition of The Whimble News.

The next planning meeting is at the Fountain Inn on Tuesday 3rd April 2007 at 8.00pm. Everyone who would like to attend this meeting is welcome.

We regret that it appears that the era of hanging bunting across the road is over due to the need for insurance and 'skilled' personnel with hydraulic access equipment. We are considering hanging bunting down the side of the road and around the square. We will be discussing this with residents in the near future.

We are all looking forward to a successful Village Week and would welcome any help.

**Justin Harris** (01404 823873)

## SEARCH FOR WHIMPLETONS PANTO PHOTOS

The Whimbletons have been putting on pantos in the village for some 10 years (when will Whimble have had enough you cry) and we have a fine selection of photos from the last 2-3 productions. However, we realise that we have very little photographic record of previous productions (no bad thing you cry) and we are asking if anyone in the village has a photo/photos of past pantomimes that we could borrow to copy, and then return to you.

If you have, I would love to hear from you, so please ring me on 823194.

Thank you.

**Ed H**





SOLICITORS

The Complete Legal Service for  
families, individuals and businesses  
throughout East Devon

**We will visit you at your home if you wish**

For further information and to arrange a  
free initial consultation please telephone

**813446 (Ottery)  
or 41221 (Honiton)  
or David Smith on 822123**

HDR

## **Records & Pop Memorabilia Wanted**

**Good prices paid for the following**

**Records. CD's, Rock & concert Memorabilia**

**Tour Programmes/ Old Tickets/ Magazines/ Sheet Music**



All types of music, large or small collections

Rock - Pop - 50's - 60's - 70's - Punk - 80's

John W Griffiths

Phone: 01404 823480

Mobile: 07836 369740

Email: [hdicksrecords@yahoo.co.uk](mailto:hdicksrecords@yahoo.co.uk)

# Whimble History Society



## HONEYPOTS AND HIVES

This Summer's exhibition at the Whimble Heritage Centre is a collaboration between Whimble History Society and the Devon Beekeepers' Association, entitled 'Honeypots and Hives'.

It features an amazing selection of honeypots from the large collection owned by Mrs Barbara Salter. Barbara has collected these honeypots over many years and there are many styles displayed, each evoking a different era or fashion. Who would have thought that there could be so many variations on a theme?

On display in the exhibition are also examples of bee-keeping equipment and clothing. There are also lots of pictures of bees and beekeeping as well as plenty of information about the life of the bee and bee-related products.

As well as the special exhibition, you can see the Heritage Centre's permanent collections, this year on display in super new display cases funded by the National Lottery Fund.

Please come along and enjoy the displays – it is an ideal place to come with all the family or with visitors.

This year, there are also lots of new and interesting items for sale in the shop, which make ideal gifts.

The Heritage Centre is open from 31st March until 29th September this year, on Saturdays and Bank Holiday Mondays 10.00 am – 3.30pm and Wednesdays 2.00 – 4.00pm. Entry is Free.

Naome Glanville



# ★ DRAIN-WIZARD

Pitch Fibre Specialists  
Drainage & Light Plumbing Services

**24 Hour Emergency Service**

Blockages, Jetting, CCTV, Repairs, Lining,  
Renewals, Septic Tank & Soakaway  
Problems, Toilets, Ball Valve & Leaks

Tel: Whimple (01404) 822913

Mobile: 07815 064669



## Berry Farm



Apple juice, Cider, Eggs, Pork,  
Fruit & Vegetables

Please call Jenny on 01404 823930

Or visit us in Clyst St Lawrence





**Ford Simey**  
Solicitors

**Make a Will**  
**and we will donate half our costs to your**  
**Church or a charity of your choice**

**For a straightforward Will we charge £80 and for husbands**  
**and wives "Mirror Wills" we charge £100 plus VAT.**

**We will donate £40 and £50 respectively**

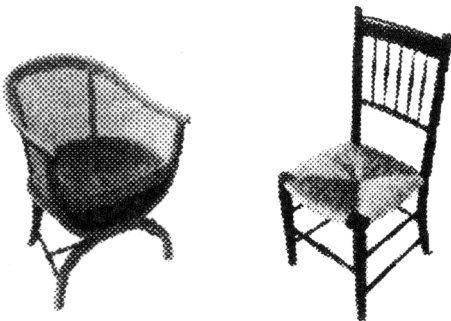
**For full details call**

**Victor Donson on 01392 274126**

**8 Cathedral Close, Exeter EX1 1EW**

**[www.fordsimey.co.uk](http://www.fordsimey.co.uk)**

**CHAIR CANING**  
**RUSH SEATING**  
**SKEINED WILLOW**



**Tel: 01404 822422**

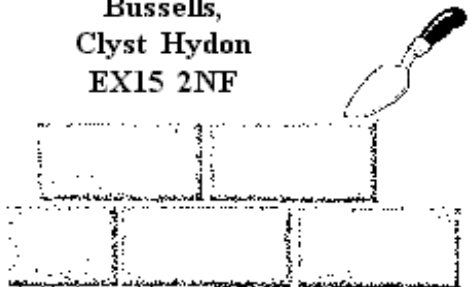
Higher  
Slewton  
Whimple

**Rosemarie Burrows**


**TWW BUILDING**  
**SERVICES**

**EXTENSIONS, PATIOS, PONDS,**  
**STONEWALLS, FIREPLACES**  
**PAINTING ETC.**

**Bussells,**  
**Clyst Hydon**  
**EX15 2NF**



**Tel: 07749 715187**



# BARN DANCE IN THE BLOSSOM.

Organised by Whimple Primary School PTFA.

**Saturday 5th May**

**Gates open 5.30pm**

**Live Band and Caller**

**Bar**

**Roast Pork Rolls & Bar B Que**

*This Magical Evening will start at 6pm with*

## **Maypole Dancing**

*using the schools newly acquired Maypole and  
danced by children from Whimple School*

**Ticket price includes food:**

**£6 adult, under 12's and OAP's £3, under 3's free**

**At: 1 Higher Woodhayes Farm**

**Woodhayes Lane**



**Tickets from the Post Office or Sue Wilson**

**Very limited parking, please walk or park at the loading bay at Lower  
Woodhayes by kind permission of Margaret Burrough**

**No high heels please.**

**Further details from Sue Wilson 822641**

**This is an outdoor event and may be cancelled  
with full refund given if weather is bad.**



# **BARRY SEAFORTH DECORATING SERVICES**

Est 1979



PAINTING WALLPAPERING  
SPECIALIST FINISHES MURALS TILING  
COVING CARPENTRY ALTERATIONS  
REFERENCES AVAILABLE

Call Barry 01395 513729  
Free Estimates



Little Cot  
Hembury Fort  
Honiton  
Devon  
EX14 3LE

Tel  
01404 841699  
Mobile  
07976725516

## **M P SMALL ENGINES** Mike Persey

**SERVICE & REPAIR TO**

**All makes and types of  
Horticultural / Garden  
Forestry and Small Agricultural  
Machinery**

**Specialist in the repair of older  
Machinery and Sports Club machinery**

**Makeovers and rebuilds undertaken**

**New machinery at competitive prices**

**Collection Service**

# PETER COSSLETT

**CARPENTER AND BUILDER**

**QUALITY WORKMANSHIP**

**KITCHEN FITTING**

**DOORS AND WINDOWS**

**TIMBER CONSERVATORIES**

**EXTENSIONS AND MINOR**

**BUILDING WORKS**

**COMPETITIVE PRICES**

**&**

**FRIENDLY SERVICE**

**Tel: Whimble (01404)823279**

**Mobile: 07768 436042**

# S.H. DANIEL

**ELECTRICAL CONTRACTOR**

**CROCKERNHAYES**

**WHIMPLE**

*PRIVATE ADDRESS*

Malham House

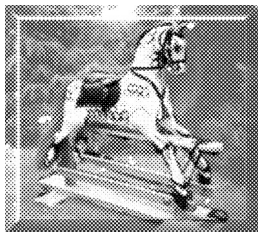
Awliscombe

Devon



# BANFIELDS

*Traditionally carved rocking  
Horses & Restoration*



18 Rectory Close, Whimble,  
Devon EX5 2UF

Tel 822162

E-mail Banfieldgew@msn.com

# D. GARLAND

**Specialist in  
Built in Furniture,  
Carpentry and  
Joinery**

# DG

**10 Elliot Close  
Ottery St Mary  
Devon**

**EX11 1GZ**

**Tel: 01404 811465**



## Longfield Cattery

heated single and double chalets  
personal care and attention



(now also looking after small animals)

01404 822275

Longfield ~ Church Road ~ Whimble ~ Exeter ~ EX5 2TF

*"Learn a life skill with a Professional"*



# J.C.Ball



**Driving Standards Agency Approved Driving Instructor**

- FREE:- First hour for beginners
- FREE:- Loan of Videos and Books
- FREE:- Pickup in Exeter & East Devon

2 Manley Close  
Whimble  
Devon  
EX5 2UG  
(01404) 822764

*Refresher and Motorway Lessons*

*"Safe driving for life"*

by  
Sean  
Jamie  
Karl  
~~and~~

↑  
Devon

On Friday the 2<sup>nd</sup> of March  
the youth ~~club~~ <sup>group</sup> re-open and  
everyone was really excited.  
On 19<sup>th</sup> of February ~~the~~ 15  
children and 3 adults took  
part in a sponsored walk  
and raised £250 to £300  
for the youth group. There  
is a range of activities like  
table tennis, table football,  
air hockey, snooker and  
much, much more. At the  
moment theres nothing to  
do in whimple ~~and~~, so we  
~~would~~ <sup>would</sup> be hoping that one  
day we will get some  
more activities like  
a swimming pool,  
a new park,

~~Tennis~~ Public tennis court  
Rugby posts. A wall in  
the old park so  
we can play football  
against it as well it ~~is~~ would  
allow the youths of the  
community to express there  
artistic talent,

A whimple youth football team

# WAC4Y NEWS

Two pieces of really GOOD NEWS!

Firstly, if the ground has managed to dry out – a lovely new shelter should be in place in the playground near The Square. Many youngsters have been involved with us, trying to improve the site and appear very enthusiastic and excited about the shelter. Goal posts should also be in place as well as a basket ball stand.

Secondly, during our meetings over the last few months, it emerged that Mino (Michelle Lovering) and Sue Thorne were very keen to start up the Youth Club again. So, after much discussion and planning the Youth Club opened on Friday 2<sup>nd</sup> March.

It was great to see so many youngsters having such a good time playing snooker, table tennis, football games etc.. Mino and Sue's enthusiasm to help the youngsters has been brilliant. Even when they discovered no grant would be available until later in the year, they and fifteen youngsters organised a sponsored walk raising approximately £250 which helped pay for the equipment, rent for the Scout Hut and most importantly - stock the Tuck Shop!

They need and deserve as much adult support as possible so PLEASE if you are interested in this project and can help in any way we really need to hear from you.

Mino and Sue can be contacted on 823229.

Good luck to you both.

Many thanks - **Liz Silk** 822389

Thank you to Mino & Sue  
for opening a fun packed youth club  
with loads of good activities like: Ping pong,  
snooker/~~pool~~, football table and air hockey  
table and more we are hoping that  
more activities are brought in, like football  
in the summer and more out <sup>door</sup> sports. And thank  
to all the helpers as well!

Dan Thorne  
we are hoping ~~to~~ to make up a  
youth football team as well for the  
people that come.

# Parish Plan Update

Thank you to everyone who completed the parish plan questionnaire. There was an excellent response for a village of this size - 410 forms (a 60% return) embracing the views of over 800 people aged 11 and over. The draw for the £20 voucher to be spent in one of the village pubs was carried out by Jim at the Post Office and the winner was Mrs Edith Grout.

A statistical analysis of the forms by Devon County Council has been completed and the steering group is currently going through the additional comments and suggestions, following which a draft action plan will be drawn up. A report of the survey and possible actions will be produced for every household and a presentation on the draft action plan will be given in The Victory Hall on Tuesday 19th June. Further information in due course, but in the meanwhile please keep this date free.

The whole process of preparing the plan has taken longer than anticipated (not unusual, we are told) but that does not mean that everything raised on the consultation day last June is on hold until the action plan has been produced. For example, WAC4Y has been active with work on the playground near the Scout Hut and is considering further use of the Parish Field, and a new Youth Club has been started. The VPA has brightened up the village with daffodils and the Parish Plan steering group is endeavouring to see if a toddler swing can be provided in the play area in Slewtan Crescent.

Other village organisations continue to be active in their own way, all signs of a vibrant community. A number of people in returning the questionnaire offered help or sought further information and, where appropriate, this has been forwarded to the relevant organisation.

Mike Ellingham - Parish Plan Co-ordinator





## LOWER SOUTHBROOK FARM

### Holiday Cottages

Southbrook Lane  
Whimple  
Exeter  
EX5 2PG  
Tel:01404 822989

English Tourist Board  
**APPROVED**

Proprietors  
Angela &  
Stuart  
Lang

Central Heating  
\*  
Colour Television  
\*  
Swimming Pool  
(Heated May to Aug)

Summer Holidays  
\*  
Winter Breaks

*"Enjoy the peace and quiet of the Devon countryside.... space for the children to play"*







## *TAYLOR MADE DRIVING*

Beginners

Pass plus

Pre 17 lessons

Refresher lessons

Diamond advanced driving

Motorway driving

\*\*\*\*\*

Theory & Hazard Perception Tuition

\*\*\*\*\*

Male & Female instructors

High 1st time pass rate

\*\*\*\*\*

Patient, Friendly & fun tuition

\*\*\*\*\*

A local independent driving school

Teaching local people to

**“DRIVE FOR LIFE”**

**CALL FREE 0800 652 66 69**

Andrew & Jill Taylor

# WHIMPLE PARISH CHURCH

## Easter and other special services

5th April	7.30pm	Maunday Thursday Communion
8th April	11:00am	Easter Day Family Communion
29th April	9:30 am	Joint Benefice Service (Talatton)
13th May	11:00am	Rogation Sunday Service (Clyst St L)

*See p3 for regular programme of services*

## Children's and youth groups

**S Club 11**

**IMPACT**

**CONTACT**

Under 5's are always welcome at crèche during our morning services.

S Club 11 (5 - 9) and IMPACT (10 - 13) meet at 10:45 in the Scout Hut, and CONTACT (14+) meet at 6:00pm at Picardy on the 2nd and 4th Sundays in every month (22nd April, 13th May and 27th May). Do join us!

On the first Sunday in every month we join the rest of the church family for the Celebration Service (1 April, 6 May, 3 June).

The next IMPACT Clubnight social "Let's Get Moooving" (Send A Cow evening) is on Saturday 28th April.



Jesus died and rose again on Easter day so that.....  
....we could pig out on chocolate?

Christ died for sins once for all, the righteous for the  
unrighteous, to bring you to God. 1 Peter 3:18

**Please join us at Whimple Church, at 11am on  
Easter Day, 8th April, to celebrate!**



# WHIMPLE

## PRIMARY SCHOOL

## Hats Off! to Whimple School

Whimple School's Health and Travel (HAT) day, held on 30th March was a huge success. The day was packed full of fun for all the children ranging from quizzes, games, exercises, songs and even playground chalking – all with important messages about safe travel and good health.

Each pupil also made a hat representing the theme of the day and Margaret Burrough was kind enough to judge the best one in each year group. She admitted it was the most difficult task she had ever undertaken, as they all deserved to win.

Thank you to everyone involved. What better way to reinforce all these important messages for our children!

This little piggy went to market...



this little piggy stayed home...  
and ordered everything online from  
Own!



For food that's  
Local, fresh, convenient, delivered.

**[www.ownonline.co.uk](http://www.ownonline.co.uk)**  
or contact Dave, Keith or Sue on 01392 832000



# Compassworks

MOOR THAN NAVIGATION

## WOULD YOU LIKE TO:

**Learn to map read / develop existing skills?**

**Learn by practical experience?**

**Learn from specialists in a friendly atmosphere?**

**Know more about GPS and Navigational Software?**

**Find out what else COMPASSWORKS has to offer?**

**Tel: (01566) 783236 / 07711 055961**

**[www.compassworks.co.uk](http://www.compassworks.co.uk)**

For all your daily requirements  
of  
MILK, CREAM, EGGS, FRUIT JUICE,  
NEWSPAPERS & MAGAZINES  
POTATOES, FRUIT & VEGETABLES  
PET FOODS & REQUIREMENTS  
AVAILABLE AT COMPETITIVE RATES

Delivered to your door

Please contact

VICTOR AND MARIAN DANIEL

Summerbridge, Whimble, Devon

Tel: Whimble 822458



# WHIMPLE AND DISTRICT VILLAGE PRODUCE ASSOCIATION

Our Annual General Meeting was held in the Village Hall at the end of January. We now have a very full and active Committee which is very encouraging. We were able to look back on another successful year and begin to plan ahead for the year to come. It was good to have so many ideas put forward.

By the time this edition goes out we will have had our first event which was the talk by John Cozens on growing vegetables. Hopefully he will have passed on some valuable tips to enable more entries to be made in the Flower Show in August. Our next event will be the plant sale on Saturday 12th May starting at 10.00am in the Village Hall. This event has become so popular that if you don't get there early you could well miss out on all the bargains! Last year everything was more or less sold by 11.00am so early arrival is essential.

We had hoped to run an Open Gardens day this year, but have decided that this will need some more planning, so will be an event for next year. If there is anyone who would be prepared to let others enjoy their garden, please let us know.

We have also had the opportunity to discuss the schedules for this year's main event, the Flower Show. We are hoping to encourage more entries in the Wine and Beer Classes this year. Last year, the number of exhibits was a little disappointing, but we are sure there are some expert wine and beer makers out there to boost the number of exhibits! The exhibits can be made from wine and beer kits to make it easier, so just get brewing! There is plenty of time as the Show is not until Saturday 11th August.

We hope you will all have noticed the spring bulbs around the village that were planted last autumn. With a bit of luck these will develop into bigger and better displays each year. We are already working on a project for this year and will have more details later.

**Paul Wilson,**

Hon. Secretary.



## **Blood Donor Sessions**

**Mon 16<sup>th</sup> April**

Feniton C of E Primary School, Station Road Feniton

1.30pm to 3.15pm and 5.00pm to 7.15pm

# *Simon Turner*

## *Independent Financial Consultants*

For

**Independent Advice**

on Pensions

Mortgages

Investments

Life Assurance

Inheritance Tax Planning



Tel : **01404 822587**

For free initial consultation

# Coleridge Medical Centre

We value all feedback and suggestions from patients. The practice has a suggestion box and there is an annual patient satisfaction questionnaire, which is independently audited. Two major areas of concern, the telephone system and the front doors, have been changed as a direct result of patient feedback.

Our telephone lines and telephone system have been upgraded to provide additional incoming lines. When all of our receptionists are dealing with other calls the system will inform you of your position in the queue. The system also provides 'intelligent' call handling meaning calls should be answered promptly. We will be able to provide statistics on how many calls we receive and how we answered them. We hope to publish these statistics in future newsletters. We must thank our receptionists for their agreement to change their hours to provide cover for the additional incoming lines.

The front door has now been fitted with sensors and will automatically open when approached.

The refurbishment of the patient toilets in the waiting room is now complete. Our toilet facility for less able patients has also been renewed and now includes a new baby changing unit.

These recent improvements are a direct result of patient feedback to the practice and have been funded by the Medical Trust Fund.

## The Expert Patient Programme

The Expert Patient Programme is a self management course for patients and carers over the age of 18 who are living with a long term condition. The course is free of charge and lasts for 6 weeks. It focuses on the symptoms of any long term conditions and covers many subjects including relaxation. East Devon is fortunate to have a team of 7 lay volunteers who themselves live with a long-term condition and who provide this service on behalf of the PCT.

Quote from participant on an Ottery Course "I have regained my confidence and maintained this, so much that I have trained to be an EPP tutor, I have also learned to really pace myself"

There will be two courses running in Ottery in the near future:

Course for patients living with a long term condition starts on Wednesday 16th May at Project Cosmic, Ottery St Mary.

Looking After Me course for carers stars on Tuesday 22nd May, The Gerbera Restaurant, Mill Street, Ottery St Mary.

To book a place on either of these course, or to obtain more information on the Expert Patient Programme, please contact Mrs Mel Turner on 0845 002 0699/07791 414333 or email [epp@eastdevon-pct.nhs.uk](mailto:epp@eastdevon-pct.nhs.uk)

**FOR ALL YOUR  
SEWING REPAIRS**

**&  
ALTERATIONS**

No job too small

Also dressmaking, table linen  
& Personalised machine  
embroidery



Call Molly on

Office. Tel 01392 460970

or 07748 985830 evenings,  
Wednesdays or Sundays.

14 Bramley Avenue, Off Lower  
Hill Barton, near to the Met  
Office

**CPM Plumbing & Heating**



Your Local  
Plumbing  
& Heating Service



Registered  
Business

205961

Repair & Servicing of Oil Gas & LPG  
Heating Systems Boilers & Appliances

Using Hi-Tech Analysing equipment

Fully Insured - All work guaranteed

No Job Too Small - Free Estimates

CORGI & OFTEC Registered for all appliances

For a friendly professional service call:

**Gary Clarke**

Phone: 01404 822523 Mob: 07812013434  
Garlands, 3 Dince Hill Close, Whimble

**MASSAGE**  
in Whimble

FOOT MASSAGE

HEAD MASSAGE

BODY MASSAGE

(Half- or one-hour sessions)

Book your appointment with Lucy Ambler, Dip APNT

on 07808-720577



## MIKE PERKINS

Pat, Julie, Martin and Dave wish to thank everyone from the village who attended Mike's funeral, and those who joined us at the Cricket Club where Sally Harding provided a superb spread.

We would also like to thank you for all the beautiful cards, flowers, messages of sympathy and for the Hospicecare donations. We would like to make special mention of Jean Thirkill, Steve and Judith Canniford, Tom and Barbara Lambert, Chris Raymond, Nicky and Anthony Hemsley, Doreen Staddon, Marian Daniels, Annette Banfield, Steve and Joan Bellamy, John Spicer and Hugh Roberts for taking the time to talk to Mike during his illness. Also thanks to Edna Carthew, Lucy and Roger Smith for their support.

Finally to our dear friends Ken and Marjorie Ingram who were with us every step of the way, day or night.

Apologies if I have missed anyone out.

**Pat Perkins**

## Whimple Victory Hall

### *Soup and Sarnie Lunch*



*12.00noon until 1.30pm  
on Saturday 21st April  
and Saturday 19th May*

***Come and Join us***

*for further details ring John 823614 or Pam 822262*

# Talaton Open Gardens Weekend

## 26th and 27th May 2007



*Photographs taken in 2006 by Jim Laws, a visitor from Beccles, Suffolk*

*Left, taking the entrance money in the Church Car Park.*

*Right, Talaton Cottage within walking distance of the Car Park.*

One of about a dozen gardens open within the parish of Talaton from Newtown to Rydon, Larkbeare to Lashbrook. You may also start from any of the participating gardens identified by a green poster.

A map is supplied with the entrance charge of £3.50 and, apart from this, all you need is the time and energy to get around, be it on foot, by car or on bike from 2-6pm, and the ticket is valid for both days.

Home made cream teas are available from the Parish Hall and some of the gardens sell plants.

For further information please ring **Peppi Shaw** 822482.

Here's a recipe for the month of May

### HAWTHORN NIBBLES

Pick some young shoots and leaves washing them well. Dry, then place on slices of fried bread, top with soft cheese and grill 'til cheese is bubbling.

Bon Appetit!

**Edith Grout**

# EXETER CARAVAN CENTRE

For Sale - pre-owned caravans  
also caravans sold on owners behalf.  
Caravans always bought and sold.

01404 822116

or

07985 179399

London Road, Whimple



## SOFT FURNISHINGS & TRADITIONAL UPHOLSTERY

Loose Covers to Recovers  
Cushions to Footstools  
Headboards to Bedding  
Curtains—Blinds—Pelmet  
Swags & Tails  
And much more

**Jo Harris 01884 277519**

## ***Trimeasy***

*Your Local Interior Decorating  
Service*

Our award winning company has the expertise to provide fast professional workmanship, including stripping existing wallcovering, surface preparation and hanging all types of paper. Ceilings, Skirting Boards and Door painting.

**No job too big or small.**

*Free no obligation estimate.*

*Contact Alec Janaway to discuss your  
requirements.*

"Mellifera" Church Road  
Whimple, Devon. EX5 2TF  
Tel/Fax: 01404 823019



Reg no: 4094



# O'DELL PLUMBING & HEATING

Tel: 01404 811773 Mobile: 07974 818833

FOR ALL TYPES OF GAS AND OIL HEATING INSTALLATIONS.

BOILER SERVICE, REPAIR & BREAKDOWNS.

BATHROOMS & SHOWERS.

UNVENTED HOT WATER SYSTEMS

**Garden Design and Construction**  
from a single border to a total make-over

**A PROFESSIONAL SERVICE WITH EXPERT  
PLANT ADVICE - FREE CONSULTATION**



**Golden Leaf**  
L a n d s c a p e s

**Louise Turner N.D. Hort**

**Robert Mogridge R.H.S. Cert Hort**

Tel 01392499074 Mob 07811781137

e-mail: [info@gardenlandscapes.co.uk](mailto:info@gardenlandscapes.co.uk)

[www.gardenlandscapes.co.uk](http://www.gardenlandscapes.co.uk)

## Whimble Women's Institute

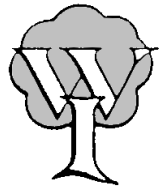
At the February meeting Audrey Hill gave a talk entitled 'Behind Closed Doors', giving members an interesting insight into her experiences as a prison visitor. To coincide with Fair Trade fortnight in March, Teresa Ely told members just how much the purchase of Fair Trade goods actually helps the producers. We also learned how the range of goods has expanded.

At the April meeting there will be a cookery demonstration. The weekly craft classes continue and a number of members have attended county events. Several attended an excellent 'Best of British' lunch and one went to a county dance day. Whimble entered the county quiz and the whist competition.

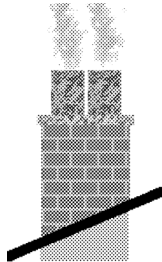
New members and visitors are always welcome.

For further details contact Ann Bowden (823450).

Rosemarie Burrows



## Chimneys Wood Burners Fires



Swept, Installed, Repaired,  
Lined and Built

"All your chimney needs"

Alf Butler

**Tel: 01404 841611**

A fully insured and HEATAS  
registered Company

## ARK POTTERY

**STUDIO, SHOP & GALLERY**

**Wide choice of affordable  
pottery direct from the potters, all  
designed and made on site. Also  
sculptures, pictures and cards.**

**ENTRANCE & PARKING FREE**

- Have a go on the wheel!
- Pottery Parties
- Commissions
- Team Building Groups

Find us just off the Ottery/Sidmouth  
Road at Wiggaton (Follow the brown  
tourist signs from Ottery.)

**OPEN DAILY 10 a.m.- 5 p.m.**



What could you do with ten minutes of your time?

## 'The Mortgage Makeover'

Ten minutes is all it takes to determine if you're paying too much for your mortgage.

Ten minutes is all it takes to see whether we can save you thousands of pounds.

Ten minutes is all it takes to decide whether you can afford to pay your mortgage off early.

Ten minutes is all it takes for impartial, independent financial advice.

Contact Stephen Clare on 01404 823375

or email – [stephenclare@thinkpositive.co.uk](mailto:stephenclare@thinkpositive.co.uk)

or by post - Longfield Whimble EX5 2TF



# Accident!

This is a very worrying report of an incident in the village, from a very concerned mother, who requested anonymity. It should make us all think about how we drive through the village, and the consequences of being impatient and insensitive to the needs of our fellow villagers who are on foot.

Let us know your thoughts.... Ed H

On Friday 2nd March at about 3.45 p.m., a 10 year old boy was struck by a car at the bottom of Church Road, Whimple.

The boy saw the car coming towards him very closely so he tucked well in, but the car's wing mirror still hit him on the shoulder, pushing him against the wall. The car did not stop.

The boy was unable to get the registration number, but described the car as 'a small rounded silver car with black wing mirrors' (Clio/Micra/Saxo?) and he believes there were no passengers.



The boy was checked out at hospital and the local police officer has interviewed him and the incident has been logged.

The children at Whimple School have been told of this incident and how to look out for themselves and make notes of number plates.

If you were the driver of this car, and are reading this, please be more careful when driving through Whimple at busy times - perhaps next time you may kill a child.

## SOUP AND SARNIE LUNCHES

I would just like to thank the Village Hall committee for these very successful social occasions. I wonder if people appreciate the amount of work that goes into these events, it's all voluntary, and aims to raise money to keep "your village hall" in good working order.

Well done to all involved, you do a really good job, the food is excellent too.

**Ann Bowden**

## PARTY TIME?

**Family Celebrations,  
Milestone Anniversaries**

## *Marquee de ParTee*

**Pretty Party Marquees and  
Pavilion Tents hired for  
*Your Special Occasion***

**Complete service for tables  
chairs carpets lighting etc.**

**introductions to  
Caterers & Hogroasters**

**Philip & Angela Crisp**

**Kennford, Exeter.**

**01392 83 27 75**

**OR Visit us at:**

**[www.marquee-de-partee.co.uk](http://www.marquee-de-partee.co.uk)**

## The Jays



The Square, Whimble. EX5 2SL

Jan and John offer a friendly and relaxed stay at the Jays.

Close to Exeter Airport for which transfers are available

Colour TV in all bedrooms

Guest Lounge with tea/coffee.

Several local Pubs and Restaurants within easy reach -(pick up service)

Bed and full Breakfast menu:

£20.00 per person per night.

No smoking.

Phone: 01404-823614

Fax: 01404-823629

e-mail: [jaydiscombe@supanet.com](mailto:jaydiscombe@supanet.com)

## OAKS & PARTNERS

### AUCTIONEERS & VALUERS

invite entries for their regular sales of antique & later furniture, porcelain, silver and plate, jewellery, metalware, paintings & prints and items of general interest at

**The Old Tannery, Exeter Road, Cullompton**

[We're easy to find on the Honiton side of Junction 28 of the M5]

The saleroom is open for receipt of items for sale  
Monday to Friday between 9.00 am and 4.00 pm  
Bring items along for valuation on a Friday morning

We will be pleased to call to your home  
to discuss valuations without obligation or collect items for sale  
Individual items to full house clearances

**Tel 01884 35848** for further details or **01404 - 814540 / 812356** after hours  
We will attend Sandfords, Whimble (by kind permission of Mrs Pratt) from 10.30 to 11.30am  
on the first Wednesday of each month to discuss valuations or collection of items for sale



Busy Bee B & B Guest Accommodation will be closing from 1st April 2007  
 Alec & Christine would like to say a BIG THANKYOU to all of you who  
 have used our B & B for your families and friends during the past 8 years.

It has been a privilege to meet and host each and every one of them.



Looking through our Visitors Book brings back wonderful  
 memories.

We have had people from so many different Nations.. .too many  
 to name.

It has been a time of unexpected surprises, much laughter and  
 fun.

After 8 successful years of running our Family Guest House we  
 feel it is time to say... THANKYOU and step into a more  
 leisurely Lifestyle!

From "Tramps to Brigadiers" we've welcomed you all!!

Alec & Chris, Busy Bee B& B

**B**  
*usy*  
 &  
**B**  
*ee*

**Historic  
 Buildings**

**Advisor on Conservation Repair /  
 Sympathetic Alterations**

**Vernacular Buildings-  
 Assessment, Proposals & Options**

**Listed Buildings-  
 Planning Applications  
 &**

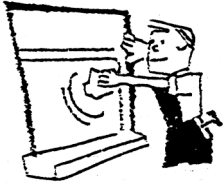
**Building Regs**

**Michael Board  
 Building Consultancy Ltd**

**Modern  
 Buildings**  
 Little Cot  
 Hembury Fort  
 Honiton  
 Devon  
 EX14 3LE  
 Telephone  
 01404 841699

**Design Service for  
 New Build Home  
 Projects**

**Extensions and Alterations to  
 Properties-  
 Designed & Drawn for  
 Planning/Building Regs**



WINDOW  
CLEANER

PAINTING & DECORATING  
TILER

PATIO PRESSURE CLEANING  
SHED ROOFS - RE-FELTED  
GENERAL HANDYMAN

(Excellent references if required)

*For that personal service*

Phone Mr Evans on 01404 822120



Tree & Hedge Planting & Aftercare ●

Contract Work ●

Garden Maintenance ●

Herbicide Application ●

Chainsaw Crosscutting ●

Strimming ●

Brushcutting ●

Call Daniel On:  
07974 385834



**DRM**  
WILLIAMS  
TREES & GARDENS

WORKING WITH

PERRIE HALE  
FOREST  
NURSERY



**N C HAMLYN**

FARM MACHINERY  
REPAIRS AND SERVICE

(Welding, fabrication etc.  
and garden wrought iron work)

Workshop facilities and mobile  
service

Contact Nigel Hamlyn on 01392  
466720

or 07702 431244 (mobile)

Paynes Farm  
Broadclyst

**M.J.COLES  
ENGINEERING**

(R.T. I.T. B. & CITY & GUILDS)  
SERVICING. ENGINE RE-BUILDS .

WELDING MOT. RECOVERY.

PICK UP SERVICE

FRIENDLY LOCAL MECHANIC

15 YEARS EXPERIENCE

FOR ALL YOUR MOTORING NEEDS

CALL

**MARC**

ON

WHIMPLE 822095 OR  
07785 740473 (MOBILE)



## Bogus Callers and Distraction Burglaries

People always assume that it won't happen to them, but sadly this type of crime is on the increase in certain areas and it is the responsibility of everyone to remain vigilant to stamp this type of crime out once and for all.

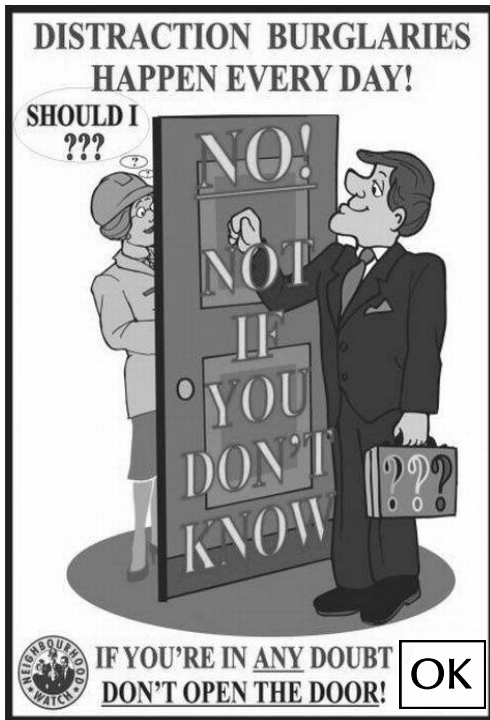
Many different ploys can be used - an Official of some kind (i.e. Local Council, Utility worker, etc), someone who has a broken down vehicle, a lost cat or similar excuse.

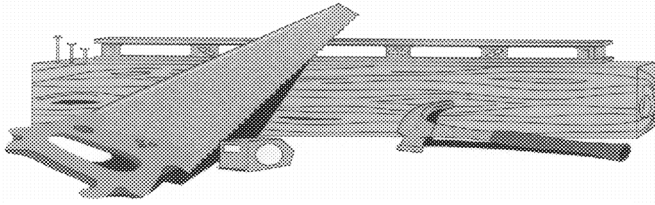
If you **do** get a caller, before you answer the door - carry out the following tips:

- 1) Put the chain on the door (if you have one) **BEFORE** opening it and ask who they are:
- 2) Ask why they are calling (unless they have a previous appointment).
- 3) Ask to see their identification (whether they have an appointment or not).
- 4) Check the phone number on their card **FROM THE PHONE BOOK**, whilst you leave the person outside - even if it's raining! Some ploys entail callers giving phone numbers of friends who will readily 'authenticate' their visit.
- 5) If you are unsure about the caller **DON'T LET THEM IN** - ask them to come back later (when you can make sure that someone else is in the house).
- 6) If you need any reparation work doing to your home - **employ local firms** and **NEVER** employ anyone 'touting' for business.
- 7) Never tell the caller that you are alone.
- 8) If asked for a glass of water, lock the door first before going to get the drink

**If you follow these tips, you will help yourself to combat this type of crime!**

*John Munslow 01404 823456*





fencing, pergolas, gates, trellis  
and sundecks.

**01404 823002**

free estimates and over 25 years of quality  
workmanship  
also patios, and brickwork.

**P. R.  
S  
M  
I  
T  
H**



JOIN US AT

## ***ANDY'S RESTAURANT***

PART OF THE INTERNATIONAL SWIMMING SCHOOL, STRAIGHTWAY HEAD, WHIMPLE  
A LA CARTE MENU

BAR SNACKS

PARTIES CATERED FOR (UP TO 30 PEOPLE) - CREATE YOUR OWN MENU

SUNDAY LUNCHES

CHRISTMAS PARTIES

BOOKING ESSENTIAL!

*ALSO ASK ABOUT OUR WIDE RANGE OF ACTIVITIES INCLUDING:*

*ADULT SWIMMING LESSONS, AQUAFIT*

*CHILDREN'S SWIMMING LESSONS, MOTHER & TODDLER SESSIONS, CHILDREN'S PARTIES*

*SAUNA, SOLARIUM*

*AND NOT FORGETTING OUR 'NATURE'S WAY' BEAUTY CLINIC WITH A FULL RANGE OF  
TREATMENTS INCLUDING MASSAGES, WAXING, AROMATHERAPY, FACIALS, MANICURES ETC.*

TELEPHONE NOW ON: **01404 822196**

OR CALL IN AND HAVE A LOOK ROUND!



## PRE-SCHOOL NEWS

# AUCTION OF PROMISES

Village Week - we will be holding An Auction of Promises at the Victory Hall on the evening of Village Day Saturday 7th July (we hope to be running one of our very reasonably priced bars on the evening!!) and also there will be a Fun Family Dog Show during the afternoon. Would you be willing to help with these events, by helping with the organisation or perhaps by making a pledge of a promise or donation of an item for our auction? Everybody has something to offer - maybe you could offer One Evening Baby-sitting, a Morning of Gardening, a Ride in a Limo or even a week's accommodation at your time-share? Maybe your workplace can be persuaded to offer something? It can be anything at all that you feel somebody would bid for. Perhaps you would like to sponsor one of our dog show classes? Please contact us on the telephone numbers below.

It has been another busy and successful term at Pre School. I would like to thank the staff, Committee and parents for their hard work and support. We had a successful OFSTED inspection this term. Well done everybody.

### Fundraising

Thank you to all those who supported our Curry and Quiz Night in January. An enjoyable evening was had by all raising approximately £500.

The money will be spent on some new equipment and on the Pre School garden. This will include a new pond, raising some of the beds, the purchase of a mini greenhouse and hopefully lots more. We plan to get this work completed over the Easter Holidays.

Pre School will be running the Barbeque at the Cricket Club 'do' on Sunday 6th May, so please bring a healthy appetite with you on the night and give us your support. Details of our Village Week events are shown above.

Thank you for your continued support.

**Vicky Clough**  
Vice Chairperson  
01404 822800

**Sally Young**  
Chairperson  
01404 823228

"FLORAL ENCHANTMENTS"

Designer:

Morven Fletcher

Flowers for all occasions

Floral designs to your  
specification

Specialist in Wedding Floristry

Bodley Bridge Cottage  
London Road,

01404 822049



**JULIAN  
WILSON**

**Electrical Contractor**

1 Higher Woodhayes  
Farm  
Whimble

Tel: 01404 822641

**Your Friendly local  
Bed and Breakfast**



**David Brown  
Holway Barton  
Whimble  
Exeter**

**Telephone: (01404 822477)**

**Visiting Practice**

Day and evening  
Appointments by arrangement

**QUALIFIED**

**CHIROPODIST**



**3, Railway Cottages  
Whimble  
Exeter**

**01404 822372**

## CARE CONCERNS

Local care for  
Local people

Respite care, bathing, cooking,  
transport, infant/toddler care.

Minimum of 1hr

Very high standard of care given  
Fully qualified  
CRB Checked

Enabling people to remain in their  
own homes

## RED HOMES ESTATE AGENTS



0.75% No Vat  
Sole Agency Fee  
Why Pay More?  
16 National Offices and  
Growing Covering South Eng-

- Advertised in Express & Echo
- [www.rightmove.co.uk](http://www.rightmove.co.uk)
- [www.redhomes.co.uk](http://www.redhomes.co.uk)
- Accompanied Viewings
- Regular Feedback

Call The Aylesbeare Office Now  
for a Free Valuation on:  
01395 225552

# Complete Locksmithing Service

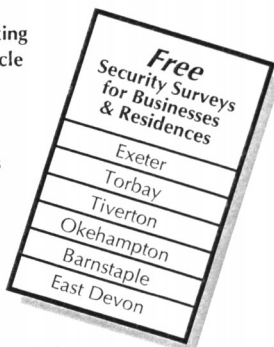


MASTER LOCKSMITHS



- Free Security Assessments
- Locks Supplied & Fitted
- Safes Opened
- Burglar Alarm Installations
- CCTV Systems

- 24 Hour Emergency Service
- Standard & Computerised Key Cutting
- Duplicate Keys Cut For Any Vehicle
- Car Transponder Keys Cut
- 24 Hour Lock Out Service
- Replacement Lock Installations
- Aluminium & Upvc Door Locks
- Master Key Suites



Agents For Medeco Locks



**01392 411887**  
FAX 01392 424817

A Wide Range of Security Products  
Available For Demonstrations At...

- 131 Sidwell St. Exeter EX4 6RY
- Unit 1, The Space Place, Alphinbrook Rd. Marsh Barton, Exeter.

[www.guardian-security.sagenet.co.uk](http://www.guardian-security.sagenet.co.uk)





# DEVON HOME IMPROVEMENTS

LIMITED

*"Why Move - Home Improve"*

Your local home improvements specialists for all those building and maintenance needs

Devon Home Improvements can provide you with hands on design and planning, together with a comprehensive supply of tradesmen and materials

We pride ourselves on our expertise and we believe we offer the most friendly and efficient service at very competitive rates.

- **Kitchen & bathroom design / installation**
- **Exterior & interior decoration  
incl. plastering services**
- **Landscaping, patio, decking, garden walls,  
garden structures**
- **P.V.C.u Facia & guttering incl. cladding**
- **Garage door installations**

Call today for your no obligation quotation

**01884 277794**

Or visit our website at

**[www.devonhi.com](http://www.devonhi.com)**



<b>Whimble Parish Council</b>	
<i>Chairman:</i> Sara Randall Johnson	822524
<i>Clerk:</i> Mrs Gerri Turner, Penraddon, Hand and Pen	823385
<b>St. Mary's Church</b>	
<i>Contact:</i> Rev. Rob Wilkinson	822521
<b>SClub11, Impact &amp; Contact</b>	
Phil and Rebecca Dominy	822163
<b>East Devon Councillor</b>	
Andrew Dinnis	850363
<b>Whimble County Primary School</b>	
<i>Headteacher:</i> Mrs. D. Brice	822584
<i>P.T.F.A. Chair:</i> Mr R.Camp	823392
<b>Whimble History Society</b>	
<i>Chairman:</i> Richard Webber	822038
<i>Secretary:</i> Roger Smith	822244
<b>Whimble Mothers Union</b>	
Margaret Burrough Gateshayes Farm	822257
<b>Whimble Pre-School &amp; Toddler Group</b>	
<i>Chair:</i> Sally Young 11 Chard Ave	823228
<i>Playleader:</i> Jo Westney Glencroft, Church Road	822168
<i>Toddlers:</i> Karen Bell 5 Lower Woodhayes Court	823443
<b>Whimble Womens Institute</b>	
Mrs. Ann Bowden, Bradcott House, The Green	823450
<b>Whimble Over Sixties Club</b>	
Mrs B. Iball, 11 Rectory Close	822905
<b>Whimble Recreation Trust</b>	
<i>Knowle Cross Sports Ground.</i> Mr P. Garraff, Luppit	891206
<b>Whimble Village Produce Association.</b>	
<i>Chairman:</i> Adrian Williams, 47 Slewton Crescent	822430
<b>Whimble Football Club</b>	
<i>Chairman:</i> Ben Silk	822389
<b>Whimble Tennis Club</b>	
<i>Secretary:</i> Judith Imbo	823240
<i>Treasurer:</i> J. Hughes	822659
<b>Whimble Cricket Club</b>	
Mr. R.J.Smith	822244
<b>Whimble Victory Hall Management Committee</b>	
<i>Secretary:</i> Pam Scanlan, Albecq, The Green	822262
<i>Booking Sec:</i> Fiona Randall	822793
<b>Whimble Post Office</b>	
Alison and Jim Creasy	822359
<b>Whimbletons</b>	
Emma Palmer	823083
<b>Neighbourhood Watch</b>	
John Munslow, 44 Slewton Crescent	823456
<b>St. Mary's Bellringers</b>	
<i>Captain:</i> Liz Silk	822389
<b>Whimble Scout Group</b>	
<i>Group Scout Leader (and Marquee Booking):</i> Alex Spry	822844
<b>Whimble Book Group</b>	
Katy Howard, 9 Whiteways Close	823038

# The Whimble News Team

**Editor**

Ed Hitchcock 823194

**Production**

Bob Scanlan 822262

Vivienne Leonard 822415

**Delivery**

Ed & Nicky Hitchcock 823194

**Advertising**

Julie Millward 823985

**Community diary**

Nicky Hitchcock 823194

**Treasurer**

Miles Leonard 822415

# LIVING AND SELLING LOCALLY



**HALLS ARE PLEASED TO OFFER THE FOLLOWING SERVICES**

- FAMILY OWNED BUSINESS
- STRONG LOCAL KNOWLEDGE
- SUPERB COLOUR DETAILS
- HIGH IMPACT ADVERTISING
- FREE VALUATIONS
- ACCOMPANIED VIEWING
- FLOOR PLAN SERVICE
- RESIDENTIAL LETTINGS

**TEL: 01404 812000**

**View all properties on the UK's No.1 website: [www.rightmove.co.uk](http://www.rightmove.co.uk)**



**15 Broad St, Ottery St Mary, EX11 1BY**

**Tel: 01404 812000 Fax: 01404 815777**

**Email: [halls@eclipse.co.uk](mailto:halls@eclipse.co.uk) Web: [hallsestateagents.com](http://hallsestateagents.com)**

# *The New Fountain Inn*

*Whimble, Devon*



*A Traditional Olde Freehouse Village Inn*

*As recommended by CAMRA ,  
The Good Beer Guide, The Real Ale Guide  
and the Quiet Pint Guide*

*Real Ales  
Home Cooking*

*Lunchtime & Evening Meals 7 days a Week*

*Sunday Roasts etc - Vegetarian Choices  
Handmade Desserts, Children's Menu  
& Toddler Portions*

*Join us for a Friendly Drink, Bar Snack or  
an A La Carte Meal*

*Bookings are Advisable*

*Tel: 01404 822350*