



The New Fountain Inn
Whimble, Devon.

*As recommended by CAMRA,
The Good Beer Guide, The Real Ale Guide
and the Quiet Pint Guide.*

Real Ales

Home Cooking

Lunchtime & Evening Meals 7 Days a Week

Sunday Roasts etc - Vegetarian Choices

Handmade Desserts

Children's Menu & Toddler Portions

Special Menus available for Large Parties

Lounge, Bar & Beer Garden

Join us for a Friendly Drink,

Bar Snack or an A La Carte Meal

Bookings are advisable



*A Traditional
Olde Freehouse
Village Inn
Tel - 01404 822350*

Whimble News



Aug/Sept 2005

What's on in Whimble

AUGUST

5th WHS guided village walk
13th Flower Show

The Whimble News Team

Editor

Ed Hitchcock 823194

Production

Bob Scanlan 822262

Naome Glanville 823167

Vivienne Leonard 822415

Anni Hindle 822025

Delivery

Ed & Nicky Hitchcock 823194

Advertising

Miles Leonard 822415

Julie Millward 823985

Community diary

Lynda Trevena 822876

Treasurer

Miles Leonard 822415

St Mary's Church

Monthly Programme of Services

1st Sunday	8am	Holy Communion
	11am	All Age Service
2nd Sunday	11am	Holy Communion
	10:45am	Sclub11 in the Scout Hut
3rd Sunday	8am	Holy Communion
	11am	Morning Service
4th Sunday	11am	Holy Communion
	10:45am	Sclub11 in the Scout Hut
5th Sunday	11am	Joint Benefice Communion

Please use the Whimble Diary held in the Post Office for checking availability of venues and booking events.

If your Association has an event which you would like listed above please contact Lynda Trevena on 822876 or e-mail lynda_amelia@hotmail.com

Whimble Parish Council	
<i>Chairman:</i> Sara Randall Johnson	822524
<i>Clerk:</i> Mrs Gerri Turner, Penraddon, Hand and Pen	823385
St. Mary's Church	
<i>Contact:</i> Rev. Rob Wilkinson	822521
Devon County Councillor	
Mr. D.Button,	
East Devon Councillor	
Andrew Dinnis	850363
Whimble County Primary School	
<i>Headteacher:</i> Mrs. D. Brice	822584
<i>P.T.F.A. Chair:</i> Jenny Sanders, 1 The Croft	823015
Whimble History Society	
<i>Chairman:</i> Richard Webber	822038
<i>Secretary:</i> Roger Smith	822244
Whimble Mothers Union	
Margaret Burrough Gateshayes Farm	822257
Whimble Pre-School & Toddler Group	
<i>Chair:</i> Sally Young 11 Chard Ave	823228
<i>Playleader:</i> Jo Westney Glencroft, Church Road	822168
<i>Toddlers:</i> Helen Penney 14 Rectory Close	822948
Vicky Clough 15 Rectory Close	822800
Whimble Womens Institute	
<i>Secretary:</i> Mrs. Ann Bowden, Bradcott House, The Green	823450
Whimble Over Sixties Club	
Mrs B. Iball 11 Rectory Close	822905
Whimble Recreation Trust	
<i>Knowle Cross Sports Ground.</i> Mr P. Garraff, Luppit	891206
Whimble Village Produce Association.	
<i>Chairman:</i> Mr. A. Bratt, Rockwell, Talaton	822437
Whimble and Broadclyst Young Farmers' Club	
Mr. R. J. Burrough, Gateshayes Farm	822257
Whimble Football Club	
<i>Chairman:</i> Geoff Delves, 10 Elizabeth Close	823258
Whimble Tennis Club	
<i>Secretary:</i> Judith Imbo	823240
<i>Treasurer:</i> J. Hughes	822659
Whimble Cricket Club	
Mr. R.J.Smith	822244
Whimble Victory Hall Management Committee	
<i>Secretary:</i> Pam Scanlan, Albecq, The Green	822262
<i>Booking Sec:</i> Fiona Randall	822793
Whimble Post Office	
Alison and Jim Creasy	822359
Whimbletons	
Emma Palmer	823083
Neighbourhood Watch	
John Munslow, 44, Slewton Crescent	823456
St. Mary's Bellringers	
<i>Captain:</i> Liz Silk	
Whimble Scout Group	
<i>Group Scout Leader (and Marquee Booking):</i> Alex Spry	822844
Otter Rotters	
Hugh Roberts	822651

ED the ed

Another excellent Village Week, and Jenny Sanders, as the PTFA Chair (next year the PTFA Table?) has given us an article thanking all involved with the week's activities. It is very pleasing to see that so many people are getting involved in Village Week, and, in my opinion, is one of the things that makes Whimble different. Well done to Jenny and her team.

Thank you to all the kind contributors to our bucket collection on Village Day – that will help to keep us afloat in 2005!

Unfortunately, I missed much of the Week as I was on hospital duty with Nicky and her arm....remember the bike crash from last year? The arm didn't heal as straight as it could have, so it was operated on and I am delighted to say that Nicky has made superb progress, been very brave and is well on the way to full fitness and ironing duties.

Geoff Delves has given us an article about the charity cricket match – what a wonderful afternoon - hot weather (what's that?), some very entertaining cricket and money raised for a good cause – the History Society. Well done Geoff.

Whilst on the subject of the History Society, Bob Roberts recently was give some well deserved recognition for all his years of hard work with the Society. Bob is at last hanging up his abacus and quill pen, and will be concentrating on his main love of trains – big and model ones! There is an article late in this edition about the recognition 'event'. If you want to see a model that Bob has built, he has lent the History Society a brilliantly detailed model of his perceptions of the Whimble railway goods yard in the Whiteways heyday. It will be on display for a few more weeks – highly recommended!

It is pleasing to see increased numbers at Parish Council meetings, and at the last one, concerns were raised from some Church Road residents (relating to the piece of road between Bramley Gardens and The Square) and the apparent excessive speed of some cars. There is now a petition in the Stores to gather signatures as a measure of the level of concern, and P.C. Jim Tyrrell, the neighbourhood beat manager, was also there and understands the situation. Hopefully we will be able to have some facts and evidence about the problem, and then look at possible solutions. If you have any views, please write to, or come to the meetings!

We really enjoyed the Devon music evening at the Thirsty recently, and hearing Jim Causley again – we last saw him as a teenager in panto here in the village, dressed in green tights and singing a version of 'House of the rising sun', - and now he has released his own CD which includes a rendition of the Whimble wassail song – the first time I have heard it for ages, as a piece of good music and NO mumbblings!!!!

For those of you have got this far, and not lost the will to live, I am delighted to include the cutoff date for the next edition, rather than the cryptic 'XXX' that we had in the last edition – my apologies, it was pure editorial incompetence! Please get your articles to Jim and Alison at the PO by Monday 12th September, or direct to Bob on bob.scanlan@eclipse.co.uk. Thanks

Ed H

FROM MY WINDOW IN THE SQUARE

Edith Marie-Louise Grout

Fairest month. Ripe Summer Queen
The hey-day of the year
With robes that gleam with sunny sheen
Sweet August does appear

August is the month of the village Flower Shows and ours is always one I particularly enjoy and never miss. The lovely displays of vegetables all so appetising, beautiful flowers, flower arrangements showing a great deal of imagination, the crafts exhibition, the children's corner

- what young talent, the cakes, jams and wines enough to whet the appetite and, last but not least, the display of photographs - very artistic.

The pattern of the whole countryside changes almost daily, it is amazing how

Harvest approaches with its bustling day
The wheat tans brown, barley bleaches grey
In yellow garb the oat laud intervenes
And tawney glooms the valley thronged with beans

the patchwork of colours make a new design

Almost as soon as harvest time is over, the fields get ploughed and then it is such a joy to see the shiny red Devon soil in neat ridges. I remember well when I attended agricultural college in Switzerland, the harvest was still done with horses. The corn was cut and bound into sheaves which we had to stack tidily into stooks and when dry had to be loaded on hay wagons to stack in airy barns. I think I must be day-dreaming of those far away days of horses and carts and ploughs, binders and threaders. Our arms used to get quite prickly because there were one or two thistles amongst the sheaves. But it was all part of the job we loved. August is usually the traditional holiday time for most people but for the farmer he works long hours to bring the harvest in. From my garden I can hear the muffled roar of the combines in the cornfields and incessant throng of balers.

Dog days, the first two weeks of August, often bring sultry hot weather. They are named after the bright dog star Sirius which during this time rises and sets with the sun. Settled weather on St. Bartholomew's, 24 August, promises a fine autumn. Few sights enhance the pleasure I have walking round my

**FOR ALL YOUR
PLUMBING AND HEATING
INSTALLATIONS AND REPAIRS**

M.G. CLAPP

8 MANLEY CLOSE, WHIMPLE, EXETER

FOR YOUR FREE ESTIMATE PLEASE RING

WHIMPLE (01404) 822022



SOLICITORS

**The Complete Legal Service for
families, individuals and businesses
throughout East Devon**

We will visit you at your home if you wish

For further information and to arrange a
free initial consultation please telephone

**813446 (Ottery)
or 41221 (Honiton)
or David Smith on 822123**

Jean and family thank friends and neighbours for all their support given with such kindness for the loss of my dear Li, father to Richard and Jayne. We miss him so much.

Jean Thirkill

On Thursday the 7th of July, I found a Tortoiseshell cat with white bib and black tail, which had been killed by a car on Bullers Hill.

Liz contacted the Cat's Protection League to try and discover if such a cat had been reported missing, but was told that they had received no such reports.

We have now put the cat to rest in our "pets cemetery", so if anyone has lost it, they have the comfort of knowing that it has been dealt with sympathetically.

Terry Hutchings

HOSTESS TROLLEY

Free to a good home....the Hostess trolley can keep up to 4 pyrex dishes and lids hot, with a separate warming 'cupboard'. You collect! Ring 823194

BIKE RACK FOR 4x4 £25

used once...bike rack specifically for 4x4 that has an external spare wheel.

Ring 823194

garden more than a host of butterflies feeding, wings outstretched - what a beautiful picture of dazzling colours. They usually hatch at the end of July and are on the wing well into September, particularly attracted by bramble flowers.

September brings early morning mists. Few sights are more evocative than the onset of Autumn when the early morning festoons of dew-drenched gossamer drape the shrubs and hedgerows and sparkling in the misty light, the sight of a cobweb. Undoubtedly the triumph of the spider's architectural genius is the

Best I love September's yellow
Morns of dew strung gossamer
Thoughtful days without a stir
Rooky clamours, brazen leaves
Stubbles dotted o'vr with sheaves
More than Spring's uncontrolled

orb-web spun by the familiar garden spider. Every year I marvel anew at such artistic talent.

Twenty-ninth of the month is the feast of St Michael the archangel. His name means 'Who is like unto God'. He appears in the book of Daniel as one of the chief princes of the heavenly host. He is revered by all religions. In art he was represented mainly as slaying the dragon but in medieval art there are paintings of him weighing souls on judgement day and he was carrying scales as well as a sword to subdue Satan and the power of darkness. Michael is

also the bringer of patience and happiness. Michaelmas was heralded indicate the right time for sowing wheat with the appearance of the elderberries. An amazing country custom was to beat the fruit trees and vegetables with branches of fruiting elderberries to impregnate them with the elderberry scent in order to deter detrimental insects. I don't suppose that this custom still exists with the advent of insecticides and pest control.

In September my mother used to make the most delicious bramble jelly and also elderberry jelly which she gave us in Winter when we had coughs. A most effective and soothing remedy. I thought for those who go picking blackberries down our country lanes mother's bramble jelly recipe would go down a treat: Incredients Blackberries, water, sugar.

Swnmer the blackberries with a little water until they are soft and mushy.

Strain through a jelly bag overnight. To each pint of juice add 3/4 lb. (350g.) sugar. Dissolve in a pan over slow heat and then boil to setting point of 25°F or 11°C. This will take from between twenty minutes to an hour depending upon the water content of the fruit and of course how fast you boil it. Pour into hot sterilised jars and seal when cool. Quite delicious with brown home-baked bread and butter. Bon appetit.

Waves of Whimble

Ladies and gents hair stylists with over 30 years experience

The salon has a warm and friendly atmosphere where clients can relax, so why not pay us a visit?

We cater for both trendy and traditional styles.

Open Tuesday to Friday 9 am to 5 pm

and Saturday 9 am to 1 pm. Late night by appointment.

Free parking by kind permission of the Thirsty Farmer.

Members of the hairdressing association.

Tel: (01404) 823400

New Inn Cross, Whimble EX5 2TS

PARTY TIME?

Family Celebrations,
Milestone Anniversaries

Marquee de ParTee

Pretty Party Marquees and
Pavilion Tents hired for
Your Special Occasion

Complete service for tables
chairs carpets lighting etc.

introductions to

Caterers & Hogroasters

Philip & Angela Crisp

Kennford, Exeter.

01392 83 27 75

OR Visit us at:

www.marquee-de-partee.co.uk

The Jays



The Square, Whimble. EX5 2SL

Jan and John offer a friendly and relaxed stay at the Jays.

Close to Exeter Airport for which transfers are available

Colour TV in all bedrooms

Guest Lounge with tea/coffee.

Several local Pubs and Restaurants within easy reach -(pick up service)

Bed and full Breakfast menu:

£18:50 per person per night.

No smoking preferred

Phone: 01404-823614

Liberte

HOLIDAYS

...Your French connection South of France:

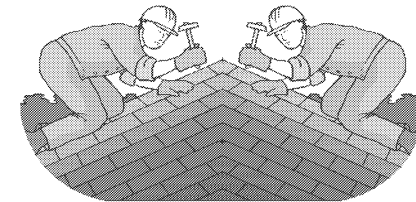
Long lazy sunny days in a beautiful French villa, with communal pool right on the Mediterranean coast.

Sleeps up to six and includes patio garden with barbecue. Satellite TV, washing machine, bike and roller-blade hire, wind surfing, kite surfing and sand sailing, as well as horse riding and go carting and on the edge of a nature reserve.

Situated near all major airports (Flybe, Ryanair, Easyjet) and airport collection available. Auto train to Narbonne from Calais; 10 min drive from motorway. Prices from £70 p.p./during July and August (price based on 6 people sharing). Also countryside B & B available and assistance with house searches and relocation available.

Please visit: www.liberteholidays.com or phone Janine or Paul on

00-33-468-44-12-08



DEVON COUNTY ROOFING

ALL YOUR ROOFING NEEDS

SLATING, TILING AND FLAT ROOFING

OVER 35 YEARS EXPERIENCE

ALAN BAKER Tel: 01404 822164

Tsunami Appeal

Through your Parish Magazine I would like to take the opportunity to sincerely thank everyone who supported the Grand Tsunami Fete at Rockbeare Manor on 25th June. I was overwhelmed by the generosity of the many hundreds of people who attended and I am delighted to tell you that so far we have raised a profit of £4,620. Thanks to the kindness and support of my family, friends, neighbours, parishioners of St Anthony's Church, Ottery St Mary, local organisations and shops in Ottery, colleagues at Exeter University and the RAF Association, and the general public, I have ordered 16 small rowing and 3 large motorised fishing boats. Appropriately, the small boats and one large one will be gifted to fishermen in a community in the South West of Sri Lanka from our community in the South West of England as this was my original project and the two other large boats will go to fishermen on the East Coast of Sri Lanka.

This project has been solely for the benefit of those affected by the Tsunami in Sri Lanka. All funds will go direct to AFLAC (Association for Lighting a Candle) in Sri Lanka, a government approved charity which has no government involvement. Since involving myself with AFLAC I have agreed to represent the organisation in Devon. There are two new cancer projects AFLAC is funding and I would like to support this cause, but there are many other projects too. If you would like to know more about the Charity and have access to a website, please log on to www.aflacinternational.com

Once again, my grateful thanks, the results have been staggering.

Tamara Snell, Marsh Green



★ DRAIN-WIZARD

Pitch Fibre Specialists
Drainage & Light Plumbing Services
24 Hour Emergency Service
Blockages, Jetting, CCTV, Repairs, Lining,
Renewals, Septic Tank & Soakaway
Problems, Toilets, Ball Valve & Leaks

Tel: Whimble (01404) 822913

Mobile: 07815 064669

WHIMPLE

The Perfect Village

“A great community, good amenities and excellent accessibility”



We have a constant stream of enquiries for property of all types in and around Whimble.

ASK FOR A FREE VALUATION

01404 814306

www.redfernsproperty.co.uk

Tim Wright

YOUR CHANCE TO SEE THE NEW TRAFALGAR DISPATCH AND JOIN IN THE TRAFALGAR WAY CELEBRATIONS

The New Trafalgar Dispatch is a modern day celebration of historical significance. Throughout the summer and autumn of 2005 the New Trafalgar Dispatch will recreate the dramatic sea voyage and journey on land by post chaise of Lieutenant Lapenotiere, as he delivered Vice Admiral Collingwood's Dispatch of 1805 - bringing the news of victory at the Battle of Trafalgar and the death of Admiral Lord Nelson - to the Admiralty in London. It will start with the delivery of the copies of the New Trafalgar Dispatch to Spain and France and then involves enthusiasts from towns and villages in seven counties across the South of England.

On 4 August 2005 'Lieutenant Lapenotiere', portrayed by actor Alex Price, landed at Fish Strand Quay in Falmouth, from the Lord Nelson, and started a remarkable re-enactment of the journey taken 200 years ago, in a specially-built post-chaise. The journey will take five weeks and he will be stopping in towns and villages along the original route taken (named The Trafalgar Way) for a series of presentations and other celebrations. He will be stopping in Exeter on 17th August where there will be a ceremony to mark the occasion. On the 18th August, ceremonies start at Clyst Honiton at 10 am at the Exeter Inn and the Duke of York, then the post-chaise and convoy move on to Fairmile for presentations at the adjacent Jack in The Green and The Oriental Promise at 10.30 am. The chinese restaurant features not only because it is a hostelry on the Trafalgar Way but highlights the multi-national nature of Nelson's men that is still reflected in our society today. One of those in his fleet was 34-year old Hampoo Hang from Canton who served at Trafalgar as an ordinary seaman on Collingwood's flagship Royal Sovereign.

Shortly after this, you will have a chance to see the post chaise pass by Hand and Pen on its way to the Escot Estate where presentations will be made at 11.15 am, The Greyhound at Fenny Bridges at 12.15 pm and the Otter Inn at Buckerell at 12.30 pm.

In Honiton the bells of St Paul's in the High Street will announce the start of the ceremonies in the church forecourt. From 1.45 pm Sparky's cab, Honiton's own licensed horse drawn taxi, will be busy delivering the mayor's guests, including the High Sheriff of Devon, Sir John Cave, to the ceremony. The town crier will be on hand to keep all informed. At 2 pm the RM buglers will herald the arrival of Lt Lapenotiere in his post chaise to deliver the New Trafalgar Dispatch to the mayor, Coun Sally Casson. The Trafalgar Way plaque in the forecourt will be unveiled before the mayor boards Sparky's cab and leads Lt Lapenotiere in his chaise on a visit to the hostelrys of the town where Landlords dispatches will be presented. After the departure of Lapenotiere the activity continues throughout the afternoon and evening.

For more information about events surrounding the re-enactment of Lt Lapenotiere's journey, including those in Exeter and Honiton, please visit the following website: www.newtrafalgardispatch.org

Complete Locksmithing Service



MASTER LOCKSMITHS

- 24 Hour Emergency Service
- Standard & Computerised Key Cutting
- Duplicate Keys Cut For Any Vehicle
 - Car Transponder Keys Cut
 - 24 Hour Lock Out Service
- Replacement Lock Installations
- Aluminium & Upvc Door Locks
 - Master Key Suites

Free
Security Surveys
for Businesses
& Residences

Exeter
Torbay
Tiverton
Okehampton
Barnstaple
East Devon

Free Security Assessments

Locks Supplied & Fitted

Safes Opened

Burglar Alarm Installations

CCTV Systems




01392 411887

FAX 01392 424817

Agents For Medeco Locks




A Wide Range of Security Products Available For Demonstrations At...

- 131 Sidwell St. Exeter EX4 6RY
- Unit 1, The Space Place, Alphinbrook Rd. Marsh Barton, Exeter.

www.guardian-security.sagenet.co.uk



Ford Simey

Solicitors

Make a Will

**and we will donate half our costs to your
Church or a charity of your choice**

**For a straightforward Will we charge £80 and for husbands
and wives "Mirror Wills" we charge £100 plus VAT.**

We will donate £40 and £50 respectively

For full details call

Victor Donson on 01392 274126

8 Cathedral Close, Exeter EX1 1EW

www.fordsimey.co.uk

Inspections - Pruning - Felling - Replanting

Major Tree Services



APPROVED
CONTRACTOR

01404 822993

www.majortreeservices.co.uk

JULIAN WILSON

Electrical Contractor

1 Higher Woodhayes
Farm
Whimble

Tel: 01404 822641

Your Friendly local
Bed and Breakfast



David Brown
Holway Barton
Whimble
Exeter

Telephone: (01404 822477)

Visiting Practice

Day and evening
Appointments by arrangement

QUALIFIED
CHIROPODIST



3, Railway Cottages
Whimble
Exeter

01404 822372

MILESTONE SERVICES

NATIONAL GARAGE WHIMPLE

Welcome to your new

 **LONDIS** *express*

best value locally

-o-

GROCERIES

FROZEN AND CHILLED FOODS - FRUIT AND VEGETABLES - WINES BEERS
SPIRITS- FRESH BAKED BREAD - HOT SNACKS AND DRINKS -
NEWSPAPERS - MAGAZINES & MUCH MUCH MORE
**LOOK OUT FOR OUR MONTHLY SPECIALS -SELECTED LINES AT
SUPERMARKET PRICES! (EG. 3 BOTTLES OF WINE FOR £10)**

-o-

JOIN OUR DVD CLUB

(MEMBERSHIP FREE) RENTALS FROM 99P

-o-

PAYPOINT AGENT

PAY YOUR BILLS - TOP UP YOUR MOBILE - ELECTRICITY KEY
CHARGING ETC

-o-

CASH MACHINE IN STORE

-o-

WE ALSO SELL CALOR GAS - COAL - LOGS - CAR CARE PRODUCTS -
GARDEN STONWARE & COMPOSTS.
FUELS AND OILS AT COMPETITIVE PRICES

-o-

LONDIS at Milestone - Best Value Locally

OPEN UNTIL 9PM

Telephone (01404) 822005

Parish Council News

During the school holidays please would parents encourage their children to play in the children's playground or the Parish Field but not in the car park.

The notice in the car park now states "No Ball Games" so please help to protect cars by observing this request.

R U 11-18? r u up 4 it?

Whatever you're into there's loads to do around East Devon during the holidays: Gigs, Media, Sports, Books, Shows, Dance, Drama, On-line games and lots more. If you're aged 11-18 check out www.eastdevonunlimited.net to find out what's on.

Community Transport

The Community Transport office in Honiton provides a wide range of services and information. The following are available to Whimble residents:-

Ring & Rides - these are for the elderly, infirm or socially isolated residents. It is a door-to-door service with full disabled access and assistance as required, provided at a low cost for users. A new "Buttercup Bus" has recently been purchased with low level side entry and full seat belts. Pauline Rogers is our Whimble representative.

TRIP - provides a transport vehicle for the disabled, allowing wheelchair bound people to access St Michael's day centre in Honiton, attend medical appointments, go shopping and attend social occasions. The vehicle is available with or without driver.

Shopmobility - short term hire of powered scooters and wheelchairs to enable people with short or long term disabilities to travel around Honiton town centre.

Voluntary Car Services - provide door-to-door transport for the elderly and infirm to attend medical, dental or similar appointments. The passenger is charged a nominal sum towards the mileage covered while in the car, no charge is made for time spent.

The YETI Project - loans mopeds to under 25s who are unable to get employment or training due to their rural isolation. The project provides full training, safety equipment and all necessary support.

All these services are located at:

29-31 New Street, Honiton, EX14 1HG.

Telephone: **01404 46529**

Fax: 01404 46542 Email: trip.cta@virgin.net



ICE

ICE COOL IN AN EMERGENCY

ICE - In Case of Emergency

A national campaign has been launched by Vodafone to get people to store details of their next of kin on their mobile phone/s which has been backed up by ambulance and emergency services around the country.

The idea can be used on virtually any make of mobile phone.

The "In Case of Emergency" (ICE) campaign was initially thought up by Cambridge-based paramedic Bob Brotchie and the East Anglian Ambulance Trust.

The idea is to get people to highlight who they would want contacted in the event of an emergency, and store these details on the mobile phone which they use.

In an emergency situation ambulance and hospital staff will then be able to quickly find out who your next of kin are and be able to contact them.

A person stores the word "ICE" in their mobile phone address book with the name and number they would like contacted.

For more than one name the services suggest numbering contacts such as ICE1, ICE2, ICE3 and so on.

A very useful thing to add to your mobile address book!

John munslow 01404 823456

THE BARBER SHOP

31a Mill Street, Ottery St. Mary
Tel No. 01404 811191

- Quality traditional barbering
- Modern hairstyles for teenagers and the younger man
- A childrens area

are offered by Petra Moore, the new owner, who is a qualified hairdresser with 13 years experience of gents haircutting.

Open Tues. – Sat. inclusive. No appointments necessary



JOIN US AT

ANDY'S RESTAURANT



PART OF THE INTERNATIONAL SWIMMING SCHOOL, STRAIGHTWAY HEAD, WHIMPLE

A LA CARTE MENU

BAR SNACKS

PARTIES CATERED FOR (UP TO 30 PEOPLE) - CREATE YOUR OWN MENU

SUNDAY LUNCHES

CHRISTMAS PARTIES

BOOKING ESSENTIAL!

ALSO
OUR

It's so simple that everyone can do it. Please do.

ASK
ABOUT
WIDE
RANGE

OF ACTIVITIES INCLUDING:

ADULT SWIMMING LESSONS, AQUAFIT

CHILDREN'S SWIMMING LESSONS, MOTHER & TODDLER SESSIONS, CHILDREN'S PARTIES

SAUNA, SOLARIUM

AND NOT FORGETTING OUR 'NATURE'S WAY' BEAUTY CLINIC WITH A FULL RANGE OF TREATMENTS INCLUDING MASSAGES, WAXING, AROMATHERAPY, FACIALS, MANICURES ETC.



Your IFA's details

Stephen J Clare
'Positive Solutions'

free initial consultation
ring 01404 823375

West One

**Hair Design
01404 814 913**

For Ladies and Gentlemen
3, The Old Village Hall, West Hill Road, West Hill,
(Nr West Hill Garage)
Free Parking at rear

**We are currently looking for a hair stylist to join our team.
Part time, Flexible hours.
Will include some Saturdays
For more information please speak to Claire.**

Qualifications include Hairdressing NVQ 1 & 2
Diplomas in: Toni & Guy advanced Technical Colouring, Colour Correction, L'Oreal Colour
Keys, Techniques 2000, Cutting and Perming.

Opening: Monday, Wednesday, Thursday, Friday & Saturday.
For an Appointment Please call **01404 814913** or Call in for Free Consultation.



The Thirsty Farmer Inn

WHIMPLE, EXETER, DEVON, EX5 2QQ

Telephone: 01404 822287

Good Food, Good Wine, Good Ale, Good Time!

TRADITIONAL HOSPITALITY AT ITS BEST

Chef's Specials Board
Delicious Homemade Desserts
Patio and Garden
We buy local

WHAT'S ON AT THE THIRSTY FARMER

Fri 12th August - "Furious George"

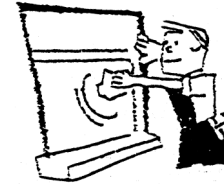
Fri 26th August - Elvis Lives!

Fri 30th September - 36FF

Every Thursday in August - Jam Night

Every other Sunday - Quiz Night

Pop in or call us for more details



WINDOW

CLEANER

PAINTING & DECORATING

TILER

PATIO PRESSURE CLEANING

SHED ROOFS - RE-FELTED

GENERAL HANDYMAN

(Excellent references if required)

For that personal service

Phone Mr Evans on 01404 822120

STOP SMOKING

With hypnotherapy
Single 90 minute
session

Dina Butler

BSc(hons) MSc MCPID
DHyp MBSCH

Tel: 01404 841611

Mob: 07790 524350

N C HAMLYN

FARM MACHINERY
REPAIRS AND SERVICE

(Welding, fabrication etc.
and garden wrought iron work)

Workshop facilities and mobile
service
Contact Nigel Hamlyn on 01392
466720

or 07702 431244 (mobile)

Paynes Farm
Broadclyst

M.J.COLES ENGINEERING

(R.T. I.T. B. & CITY & GUILDS)
SERVICING. ENGINE RE-BUILDS .
WELDING MOT. RECOVERY.
PICK UP SERVICE
FRIENDLY LOCAL MECHANIC
15 YEARS EXPERIENCE
FOR ALL YOUR MOTORING NEEDS

CALL

MARC

ON

WHIMPLE 822095 OR
07785 740473 (MOBILE)

Informal Monthly Celebration Service!

The popular new informal services start again after the summer on the first Sunday of each month in Whimble Church @11a.m. A music group and a number of different people take part in the new-style format - which is an exciting mix of drama, songs, stories & quizzes for all the family.

All ages are involved - Everyone is invited!

Sundays 4th Sep, 2nd Oct, 6th Nov, 4th Dec

P.S. More members for the new 'band'/'orchestra' warmly welcomed!

S Club 11

&

IMPACT

In September SClub11 (5-9) & Impact (10-14) start meeting again in the Scout Hut at 10:45-12:15 on alternate Sunday mornings.

Please join us - especially if you've just turned 5 or started at school!

or if you haven't been for a while.

Friends from surrounding villages are encouraged to come - & it's all free!!

Forthcoming dates are: Sep 11th, Sep 25th, Oct 9th, Oct 23rd,

Nov 13th, Nov 27th, Dec 11th (Christmas Special!).

For more info contact Phil or Rebecca Dominy on 822163 or dominypr@hotmail.com

Or visit www.geocities.com/dominyclan/SClub11.html

THE THIRSTY FARMER WHIMBLE

JAM NIGHT

EVERY THURSDAY IN AUGUST

STARTS 8.45PM

BRING YOUR INSTRUMENTS—EVERYONE WELCOME

WE WANT TO HEAR U PLAY!

FOR FURTHER INFORMATION CONTACT

DEBUSSY PROMOTIONS MOBILE: 07863 289937

OR THE THIRSTY FARMER TEL: 01404 822287



THE JACK IN THE GREEN INN

For those who
live to eat!

5 minutes from Ottery St Mary
on the old A30 towards Exeter

Two Rosettes awarded in the
AA Best Restaurant Guide

Recommended in the
Which? Good Food Guide

See our latest menus on:
www.jackinthegreen.com

Rockbeare, Near Exeter

Telephone: 01404 822240 Fax: 01404 823445



TAYLOR MADE DRIVING

Beginners

Pass plus

Pre 17 lessons

Refresher lessons

Diamond advanced driving

Motorway driving

Theory & Hazard Perception Tuition

Male & Female instructors

High 1st time pass rate

Patient, Friendly & fun tuition

A local independent driving school

Teaching local people to

“DRIVE FOR LIFE”

THE PENSION DRAWDOWN COMPANY

INDEPENDENT FINANCIAL ADVISERS

FOR UNBIASED, QUALITY FINANCIAL ADVICE BASED ON YOUR
CIRCUMSTANCES PROVIDING SOLUTIONS TO YOUR NEEDS
INCLUDING

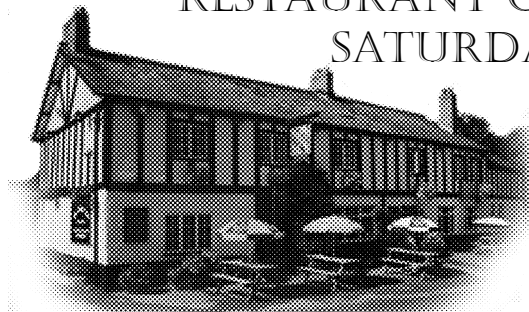
SAVINGS INVESTMENTS PENSION PROVISION
RETIREMENT OPTIONS inc ANNUITIES
LIFE AND CRITICAL ILLNESS COVER INCOME PROTECTION

Contact: Bob Diamond at Waterlake Meadow, Church Road, Whimple
On 01 404 822865 or Email r.diamond1@ntlworld.com
For a free initial consultation

Appointed Representative of The Burns-Anderson Independent Network PLC,
which is Authorised and regulated by the Financial Services Authority

Talaton Inn

SUNDAY LUNCH - DAILY SPECIALS
BAR MENU AND SNACKS
RESTAURANT OPEN TUESDAYS TO
SATURDAY EVENING



Good Ales, Good Food
Pop in and say Hello

Tel: 822214

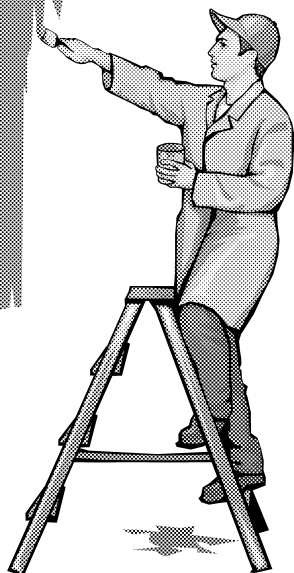
BARRY SEAFORTH DECORATING SERVICES

Est 1979

PAINTING WALLPAPERING
SPECIALIST FINISHES MURALS TILING
COVING CARPENTRY ALTERATIONS

REFERENCES AVAILABLE

Call Barry 01404 822928
Free Estimates
Jessamine Cottage, The Green,
Whimple



SOFT FURNISHINGS

&

TRADITIONAL UPHOLSTERY

Loose Covers to Recovers
Cushions to Footstools
Headboards to Bedding
Curtains—Blinds—Pelmets
Swags & Tails
And much more

Jo Harris 01884 277519

Trimeasy

*Your Local Interior Decorating
Service*

Our award winning company has
the expertise to provide fast
professional workmanship, including
stripping existing wallcovering,
surface preparation and hanging all
types of paper. Ceilings, Skirting
Boards and Door painting.

No job too big or small.

Free no obligation estimate.

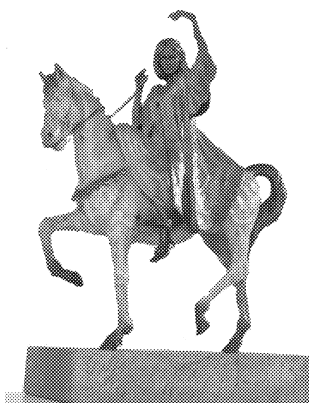
*Contact Alec Janaway to discuss
your requirements.*

"Mellifera" Church Road
Whimple, Devon. EX5 2TF
Tel/Fax: 01404 823019

IF YOU FIND YOURSELF NEAR BANBURY -----

Do go and see the wonderful new statue of the white lady on a white horse. Evidently the tourists, especially the Americans, kept asking "where's the white lady on the white horse" so they have just unveiled a new statue. It is life-size and is in the centre of the town. Cast from bronze, it has a coating which makes it translucent white and the lady is beautiful, with rings on her fingers and bells on her toes, and flowing hair.

"Ride a cock horse to Banbury Cross
And see a white lady on a white horse
With rings on her fingers and bells on her toes
She shall have music wherever she goes"



Whimple Victory Hall

What has happened to your village hall?

Over the past three years, thanks to some serious fundraising, grant applications and careful financial management, the trustees have managed to raise considerable funds to enable many changes to be made to the structure and fabric of the Hall. New activities have been introduced whilst maintaining those parts of the programme that have become established activities over the years.

Many of the improvements are clearly visible whilst others have improved opportunities for users but are far less apparent. Some of these changes have been brought about by a change in regulation from both national and local government. One of the major changes to the way in which the Hall is run relates to the Disability Discrimination Act. To this end a hearing loop has been introduced which has made a considerable difference for those people with hearing aids. Recently alterations have been made to the stage and the adjacent Billiard Room door to provide wheelchair access.

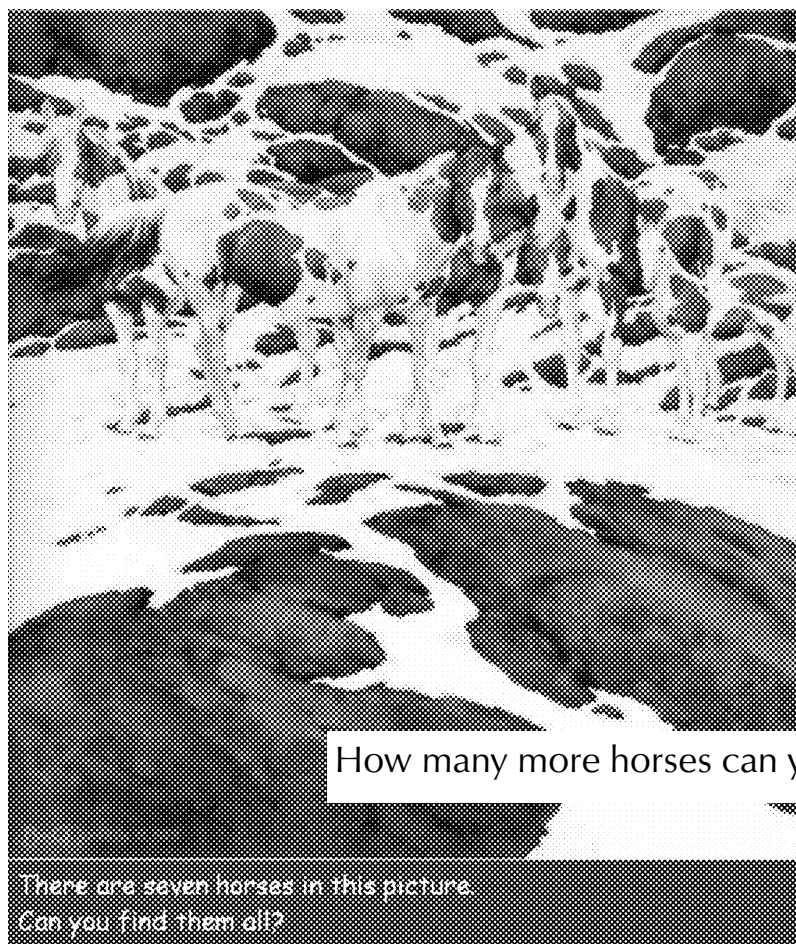
The floor and stage have been stripped, sanded and resealed, which has made the hall appear much brighter and cleaner. An additional step has been added to the kitchen entrance and a new handrail fitted. The old concrete floor in the committee room has been replaced with a new, brighter floor covering.

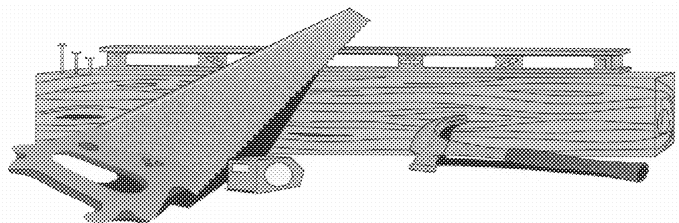
To comply with local authority requirements various electrical rewiring has been carried out which includes amendments to the emergency lighting installation, as well as new sockets to allow external electrical equipment to be used.

Outside the area between the school playground and the hall has been cleared of years of accumulated debris and a new safety fence has been erected. This now provides an uncluttered emergency access road from the hall. The hedge to the front has been carefully cut and shaped which enhances the appearance upon arrival.

The trustees intend to continue to improve the facilities and hope that villagers and users will continue to benefit from this excellent facility. If you have any ideas or suggestions please feel free to contact any of the trustees. All suggestions will be considered.

John Discombe





P. R.

S

M

I

T

H

fencing, pergolas, gates, trellis
and sundecks.

01404 823002

free estimates and over 25 years of quality
workmanship
also patios, and brickwork.



The Veterinary Clinic, Whimble

Consultations by appointment
We also offer routine surgery and dental treatment.
Please call the surgery to arrange this

Surgery times:
Monday – Friday: 8.45 – 9.15am and 4.30-5.30pm
Saturday: 11.00am – 12.00noon

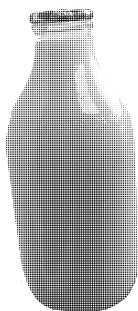
For an appointment and for all veterinary enquiries, please call 01404 823230

24 hour emergency service.

For all your daily requirements
of
MILK, CREAM, EGGS, FRUIT JUICE,
NEWSPAPERS & MAGAZINES
POTATOES, FRUIT & VEGETABLES
PET FOODS & REQUIREMENTS
AVAILABLE AT COMPETITIVE RATES

Delivered to your door

Please contact
VICTOR AND MARIAN DANIEL
Summerbridge, Whimble, Devon
Tel: Whimble 822458



Martha Mockford

Quality kitchens at affordable prices

*manufactured and expertly fitted by our own staff
better value for money than DIY stores*

**Also re-fronts & new worktops
Carpets, vinyls and wooden flooring**

Complete, friendly service from a local family business

Hotpoint, AEG, SMEG, Franke, Blanco



01404 44189



Village Week 2005

On behalf of the Whimble Primary School PTFA I would like to thank everyone for their help with Village Week, which I am sure you will appreciate involves a huge amount of work and organisation.

To start with we must thank the other organisations who took part and organised events, namely the Pre-school playgroup, Cantilena, the History society, the Mother and Toddler group, Young Farmers and the Whimbletons. Thanks to both pubs for hosting events and selling raffle tickets and to Graham and the shop staff for selling event tickets.

There were some fabulous prizes in the Grand Raffle with prizes donated by The Jack in the Green, The Hungry Fox, The New Fountain Inn, Crealy Adventure Park, Bicton Park, Escot Park, Farway Countryside Park, the Devon Railway Centre at Bickleigh, Diggerland, Otter Nurseries, Odeon Cinemas, Thomas Moores, Waitrose, Sainburys, and Exeter College's St Davids training restaurant.

This year the school had a Village Monarch competition which was won by Shaun Love who carried out his royal duties very well. Thank you Shaun and your family.

With a relatively new PTFA committee we should thank Vicky Kendrew for her support, advice and enthusiasm. She co-ordinated the events and programme for Village Week as well as putting up the bunting with a team of helpers and organised and ran events throughout the week. Thank you very much Vicky.

Of course there is also a huge thank you to the PTFA committee, parents and school staff for their hard work and generosity, without which Village Week would be very different. There are a few people who work very hard on the committee so thank you to the officers - Alice Truscott, Sue Wilson, Richard Wellesley and the wonderful Michelle Moinzadeh. I would love to thank everyone, but space is limited and I would miss someone, so thank you to all the class representatives and everyone who organised and manned stalls and events and of course all of our families for their support.

Thanks to this magazine, the shop and the post office for advertising the events, John Discombe for organising the Quiz, Jim Chard for the loan of the cow - even if it didn't poop, Anne Daniels for the fun run, Camilla Whitton for the fancy dress parade, Rob Camp for being compere in the afternoon, the school governors for helping man the raffle and Hitts Barton riding school for bringing the ponies. Thanks to John and Liz O'Hanlon for their donation and patience, Graham Fowle for his donation and the substantial cash donations from Mark Middleton at AEP Ltd and Paul and Gill from The New Fountain Inn. These cash donations make the fundraising much easier and are hugely appreciated.

It was great to have the help of so many children. From the boys who helped set up the stalls in the morning, the Year 6 children who manned the games stalls and William Bowden and Abigail Bunkum who made a joke book and

EASY TO FIND LOVELY VIEWS
Alec and Christine Janaway
Tel/Fax: 01404 823019
 Email: BandB.Busybee@Virgin.net

 **BED & BREAKFAST**
B *A warm welcome awaits at*
"Mellifera" Church Road
WHIMBLE Exeter
usy East Devon EX5 2TF

& Ideal for Coast, City or Airport
 Transport to - from
 Airport by arrangement
 Private/Holiday Car Parking
B ee En-suite Rooms
Guests Day Room with
Excellent Facilities
 £20-£22- Cheaper for longer stays & Senior Citizens
 1/2 mile Train or Bus

"FLORAL ENCHANTMENTS"

Designer:
 Morven Fletcher

Flowers for all occasions

Floral designs to your
 specification

Specialist in Wedding Floristry

Bodley Bridge Cottage
 London Road,
 01404 822049

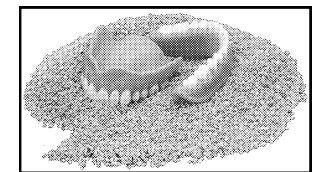
Chimneys Wood Burners Fires



Swept, Installed, Repaired,
 Lined and Built
 "All your chimney needs"

Alf Butler
Tel: 01404 841611
 A fully insured and HEATAS
 registered Company

Denture Specialist



Full service - from a 'repair' to
 new Copy Dentures

Nicholas J Rush

Dental Technician
 established 18 years

14 Slewton Crescent, Whimble
 01404 823209 - evenings and
 weekends

WHIMPLE AND DISTRICT VILLAGE PRODUCE ASSOCIATION

Our "open garden" afternoon on Sunday 10 July was another hugely successful event. We are very grateful to Lilian Braund who very kindly allowed us to put on this event. What more could you have asked for, a perfect summer's afternoon, excellent gardens to walk around and enjoy, and a cream tea to complete the afternoon! It was perhaps a little warm for some but the large numbers who did come along certainly had value for money. Once again our grateful thanks to Lilian for allowing us to enjoy these wonderful gardens.

By the time this reaches you all it will time for the annual Flower Show on Saturday 13 August, the highlight of our yearly events. No doubt many of you are or have been putting the final touches to your exhibits or are hoping that nothing untoward devours your garden produce before it gets into the Victory Hall! Once again we are looking forward to seeing a wonderful array of exhibits and having the Victory Hall filled with the creativity that exists in the village. Entries have to be with the Show Secretary, Mrs Pratt, at Sandfords by Wednesday 10 August. Judging on the day commences at 10.00am and the doors are open for public viewing at 3.00 pm. As we all know we will not have the benefit of Henry Stephen to judge the Flowers and Vegetables but it would be nice to think we can have bumper entries in these classes as a tribute to all he did for our Show in previous years.

We look forward to seeing you all on Saturday 13th august for what should be another memorable show.

Paul Wilson,
Hon. Secretary.



Whimble Over 65's Christmas Party

The cricket club are organising a Meat Bingo on Friday 12th August, eyes down 7.30pm, to raise money for this event. Draw prizes will be gratefully accepted.

We appreciate the help which we receive each year from the cricket club.

L.M.Smith

donated all profits. Thank you. It really sums up the spirit of Village Week with so many people and organisations coming together and the enthusiasm of the youngsters to get involved is heart warming.

Initial calculations show a profit in excess of £2000. Any funds raised will be gratefully received and used to support the school in buying extra books, paying for external workshops and other things which improve the children's environment and extend their learning beyond the curriculum.

We hope you enjoyed Village Week and thank you for your support. If you would like to become involved with the PTFA of Village Week you do not have to have children at the school and your support would be very welcome. Please contact me on 823015 if you would like further details.

Jenny Sanders (PTFA Chair)

Village Fun Run

In the blistering heat encountered on Village Day, 64 runners of all ages turned out for the annual fun run (oxymoron) around the green.

After a start reminiscent of the London Marathon, the competitors quickly settled into their various ability groups, some holding back, relying on their sprint finish to move up the pack on the run in from Webber's Close. Unfortunately, this tactic failed in the writer's case, as virtually everyone else had finished before he reached Webber's Close!

Thanks to Ann and Tom and all their helpers for their enthusiastic and efficient organisation. All runners were told their position and time, although making this public may prove a little embarrassing for some, especially when the time included hours as well as minutes!

Congratulations to the following class winners:

Mens overall: Jeremy Wilson
Ladies overall: Eleanor Dodd
Boys Under 13s: Daisuke Gormley
Girls Under 13s: Sophie Lavis
Boys Under 8s: Edward Wilson
Girls Under 8s: Abi Bunkum

Apologies for not presenting certificates on the day, but someone managed to put the paper in the photocopier upside down! I promised not to mention Louise's name in this connection!

Finally, well done to everyone for taking part. Ann tells me she will be entering next year, provided the snow conditions are favourable.

Please let me know if you need anymore info.

All the best - **Dave Garratt**



Feet First
Reflexology
Joanne M Hicks MIFR
 Registered Practitioner
 Trowdon, Whimble
 01404 822884 0777 5828677
 jomhicks@aol.com

PETER SALTER A.I.R.T.E.
MOBILE MOTOR ENGINEER
 (Member Institute of Road Transport Engineers)

Servicing & M.O.T. Preparation
 Engine Overhauls & Bodywork Welding
 Cars & Commercial Vehicles

Telephone: Whimble (01404) 823054

PETER COSSLETT
 CARPENTER AND BUILDER
 QUALITY WORKMANSHIP
 KITCHEN FITTING
 DOORS AND WINDOWS
 TIMBER CONSERVATORIES
 EXTENSIONS AND MINOR
 BUILDING WORKS
 COMPETITIVE PRICES
 &
 FRIENDLY SERVICE
 Tel: Whimble (01404)823279
 Mobile: 07768 436042

S.H.DANIEL

ELECTRICAL CONTRACTOR

CROCKERNHAYES
 WHIMPLE
 DEVON

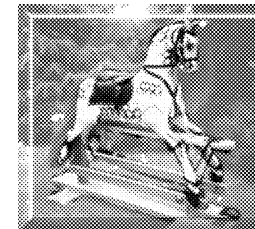
PRIVATE ADDRESS
 Malham House
 Awliscombe
 Devon



EX11 0QA

BANFIELDS

Traditionally carved rocking
 Horses & Restoration



18 Rectory Close, Whimble,
 Devon EX5 2UF

Tel 822162

E-mail Banfieldgew@msn.com



LOWER SOUTHBROOK FARM

Holiday Cottages

Southbrook Lane
 Whimble
 Exeter
 EX5 2PG

Tel:01404 822989

Central Heating
 *
 Colour Television
 *

Swimming Pool
 (Heated May to Aug)



Proprietors
 Angela &
 Stuart
 Lang



Summer Holidays
 *
 Winter Breaks



"Enjoy the peace and
 quiet of the Devon
 countryside space for
 the children to play"

CHARITY CRICKET MATCH

A charity cricket match was held on the 26th of June and an amazing £413.40 was raised for the Whimble History Society. This is the third year we have had a charity cricket match, and in the last two years they have been very well supported with players, but this year the response from villagers was fantastic with 39 people turning up to play! It meant that the matches did go on for a bit of a long time. Perhaps when we have our next match we can start a little earlier if we are going to get this number of players. We ended up with three teams of thirteen playing a round robin, which meant every team playing twice just to give everybody a bat and a bowl. We had Vicky Kendrew's team, Adrian Hewitt's, and mine. All three teams tried their hardest with some great batting and bowling moments from all the players with some catches that you would expect to see in a test match.

The eventual winners of the cricket were the 'A' Team, who had also won it for the last two years – which just happened to be my team. But I am sure you will agree it's not the winning or the losing – is it Vicky and Adrian? – it's the taking part and having a bit of fun in the sun.

In my book there was only one winner and that was the History Society. I am sure most you have visited the Heritage Centre in the village – these sorts of places do take a lot of money to keep going so I know they appreciate money-raising events to help raise a bit of cash.

I must thank the Cricket Club for the use of their facilities once again, and Sally, Roger and taffy for serving the much needed liquid refreshments. There was also a pr thank you to all who donated prizes and tickets, and baby Jack for calling out the w ticket numbers. Vicky Kendrew once a did a fantastic job with her BBQing skills, I only cooking for 70 (+) people, but sh very kindly brought and donated the food for the day – thanks, Vic.

I would just like to say a big thank you to everybody who came along on the day to support the event, and I look forward to our next one which will be a skittles matc in aid of the Whimble News, hopefully August or September. I will let you kn when, so watch out for the posters arou the village – many thanks.

Geoff Delves



VILLAGE WEEK TREASURE HUNT

65 adults and 90 children took part in The History Society's Treasure Hunt around the village on the evening of Tuesday 5th July, the largest number to take part in this annual event. Out of the possible 55 points, the winning teams (two) scored 51. Another 12 teams also received prizes for being in 2nd, 3rd and 4th places.

As part of the question paper, questions were asked about Whimble. Many participants have subsequently asked about the answers to these. Both are produced below:

1. Redler House is now a residence. For what purpose was it originally built in 1862 and so used until 1972? (Answer – Congregational Chapel)
2. Which coat of arms is on street name signs – eg Webbers Close, Whiteway Close? (Answer – East Devon District Council)
3. On the end wall of Quarrendon Two, Slewton Crescent, are 4 brick patterns. What do they represent? (Answer – Cyder Presses)
4. What is the name of the house now standing on the site of Whiteway Cyder Co Ltd Coopers Shop, Talaton Road? (Answer – The New Clock/Juniper Cottage)
5. On 22nd May 2005, The History Society opened an extension to the Heritage Centre. What is the name of the extension? (Answer – The Whiteway Wing)

A Perfect Day

The sun was shining, there was a gentle breeze, the village square was busy with stalls and a barbecue which smelt delicious. Miles, Naome and myself took on the task of collecting for the Whimble news and asking for comments. Miles was brave enough to wear a sandwich-board advertising what we were up to but as soon as he smelt food he was off like a shot. Enjoying a bacon and sausage roll he found it a little tricky trying to eat but managed without any assistance. After a short while the sandwich board came adrift and Miles was forced to remove it before any damage was caused to his person. However it was decided to call it a day and off we went to add up our most welcome collection which came to the sum of £70.52. Many thanks to you all for your donations enabling us to keep the magazine going with the help of our advertisers. Also the comments you made were very welcoming and positive. If anyone didn't see us in the square and would like to make a contribution please feel free to leave something in the post office with Jim and Alison. I hope the day was as enjoyable for you as it was for us, many thanks once again.

Lynda Trevena

WHIMPLE'S MURDER MYSTERY - Friday 8th July

Having heard good reports about the last murder mystery and having never been to one before, my curiosity got the better of me and I decided to see what it was like to be Miss Marple for an evening.

The murder mystery took place at the Victory Hall and, as the plot was based on 'Midsomer Whimble', the location was very authentic. The story surrounded some residents of the local area who had died in mysterious circumstances and they all had one thing in common - they all belonged to the Midsomer Whimble Literary Society which met at the Victory Hall.

As the sleuths, we had to interrogate the surviving members of the Literary Society to find out what dark secrets they were hiding. Who was the dastardly killer amongst them? Emily Palmerston, who ran the Society?, the handsome Paulo Kolinski? Coral Hartbeat, or Kitty Hayward who has just come to live in the village? Was there more than one murderer? Things got even more suspicious when another member of the Literary Society dropped down dead right in front of us!

We all collected clues by quizzing the suspects and deciphering police information bulletins that were handed to us thick and fast throughout the evening.

There was a break for dinner. The spread laid on by the Whimbletons was great - and there was plenty of it!

There was much merriment throughout the evening and the level of concentration on the task in hand varied according to the alcohol consumed!

Everyone had a great time, and most teams at least guessed 'who dunnit', although not all of us worked out why!

A big thank you to the Whimbletons for putting on the murder mystery, Peter Bolwell for so cleverly writing the plot and all the parts, and Carol Hart for organising the food.

I am certainly looking forward to the next murder mystery!

WHIMPLE VILLAGE WEEK

RESULTS:

DARTS COMPETITION: Monday 4th July

Singles: won by Billy Bloomfield

Doubles: won by Julie Palmer & Ollie Vince

WALKING TREASURE HUNT: Tuesday 5th July

Won by Mr Peek

Summer Madness



ON ALL

MADE TO MEASURE

DOORS, GATES

&

GARDEN FURNITURE



EXAMPLE
6 FT PICNIC TABLE
NORMALLY £95.00
NOW £90.25
SAVE £4.75





DC TIMBER & DECKING LTD

UNIT 15

DINAN WAY TRADING ESTATE, EXMOUTH, DEVON EX8 4EZ

TIMBER DECKING SPECIALISTS
DESIGN • SUPPLY • INSTALLATION

FREE CONSULTATIONS & ESTIMATES

ALSO

DOORS & GATES MADE TO MEASURE
PLUS MUCH MORE

E.G. 6' PICNIC TABLES @ £95.00

JUST PHONE FOR A QUOTE

TEL: 01395 222626

FAX: 01395 222526

email: sales@dcdecking.com

• GREAT DISCOUNTS ON • SAWN •
• PLANED & TREATED TIMBERS •

Ceilidh Capers!

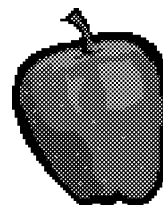
What a great time we had celebrating Slack Ma Girdle's 10th Anniversary in June. Wonderful music and singing from this very talented band kept everyone on their feet, or other peoples(?) until late into the night.

Girdles were definitely slacked, hair let down and shoes removed as the evening progressed. What with the hilarious musical hats game, a guest appearance by Lorna the camel and trying to keep up with Emma's instructions for the "so_easy" stamping dance - I haven't laughed so much in ages. It was nice to have so many children staying up late and en themselves too, making it a real family night out.

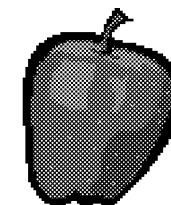
The evening also included a delicious lasagne sup followed by an overwhelming choice of puddings. T food alone was well worth the ticket price.

Thank you to Slack Ma Girdle and all involved with the catering for a really entertaining and fun evening.

Katy Howard



Berry Farm



**Apple juice, Cider, Eggs, Pork,
Fruit & Vegetables**

Please call Jenny on 01404 823930
Or visit us in Clyst St Lawrence

140th Anniversary of the Arrival of the Railway in Whimple

This year is the 140th Anniversary of the arrival of the London and South Western Railway in Whimple. In 1865 they opened the station on the Salisbury to Exeter line. A goods yard followed and was expanded in the early 1900's.

The passenger station main building survives. The goods yard was run down from 1967, closed in 1990 and was removed in 1991-2.

To mark the Anniversary, Whimple Heritage Centre has an exhibition featuring a model of the goods yard as it was circa 1947, when it was a busy yard. Also on display are items connected with the station and yard. The exhibition will be on display until the end of September during the Centre's

opening times: Wednesdays from 2 – 4 pm; Saturdays and Bank Holidays 10 am to 3.30pm.

Bob Roberts



Reg no: 4094



O'DELL PLUMBING & HEATING

Tel: 01404 811773 Mobile: 07974 818833

FOR ALL TYPES OF GAS AND OIL HEATING INSTALLATIONS.

BOILER SERVICE, REPAIR & BREAKDOWNS.

BATHROOMS & SHOWERS.

UNVENTED HOT WATER SYSTEMS.

UNDERFLOOR HEATING.



Garden Design and Construction
from a single border to a total make-over

Golden Leaf
Landscapes

Louise Turner N.D. Hort

Robert Mogridge R.H.S. Cert Hort

Tel 01392499074 Mob 07811781137

e-mail: info@gardenlandscapes.co.uk

www.gardenlandscapes.co.uk

**A PROFESSIONAL SERVICE WITH EXPERT PLANT ADVICE
FREE CONSULTATION**

WHIMPLE WOMEN'S INSTITUTE

WHIMPLE WOMENS' INSTITUTE

Our speaker in June was Ann Sutherland who gave a very interesting talk on her experiences as an actress. The subject of the evening was, in her words, "Choice Words", a monologue.

During her career she had taken on the mantle of Miss Marple but most of all she was influenced by Joyce Grenfell who she met early in her career. Ann had also taught disadvantaged Asian children.

July saw us welcoming Richard Hunkin and Sharon Newman to our meeting. Richard is a board member of Crimestoppers and Sharon a WPC with Devon & Cornwall police force. Their talk on the role of Crimestoppers within the community and the help we can all give in reporting suspicious circumstances to this agency v interesting, practical and absorbing.

As our July meeting was an open one we had the pleasure of welcoming members from Alphington WI as well as our friends and families and also indulged ourselves in cake, instead of biscuits, with our tea!

If you would like to join us please contact Ann Bowden, our secretary, on 01404 823450.



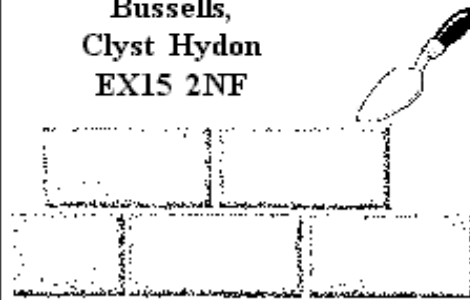
WHIMPLE OVER 60's CLUB

- 2 August Trip to West Bay. Meet 5.00 p.m. in The Square
- 23 August Trip to Plymouth and up the River Tamar
- 6 September Speaker Mr Kingsley from Staywarm (see advert in the last Whimple News)

TWW BUILDING SERVICES

EXTENSIONS, PATIOS, PONDS,
STONEWALLS, FIREPLACES
PAINTING ETC.

Bussells,
Clyst Hydon
EX15 2NF



Tel: 07749 715187

CHAIR CANING
RUSH SEATING
SKEINED WILLOW



Tel: 01404 822422

Higher
Slewton
Whimple

Rosemarie Burrows

Tree & Hedge Planting & Aftercare

Contract Work

Garden Maintenance

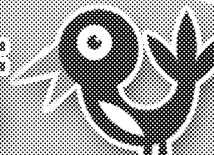
Herbicide Application

Chainsaw Crosscutting

Strimming

Brushcutting

Call Daniel On:
07974 385834



DRM
WILLIAMS
TREES & GARDENS

WORKING WITH
PERRIE HALE
FOREST
NURSERY

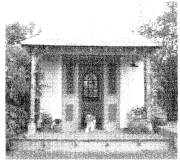


for
Ceilidhs, parties, weddings,
Christmas sing-a-longs.
The local band
for all occasions



Tel 823083

Not as interesting as Granny's!



Paul Seager

BS(Hons) BEng MRICS MiFireE

**Architectural Services,
Plans and Designs**

- * Plans & Specifications
- * Building Regulations &
- * Planning Applications

Telephone 01395: 232501



Heritage Taxis

At your service

01404 51 55 44

07981 72 55 36

Proprietor: Gavin France

MIRACLE MANICURES



**BEAUTY FOR
THE HANDS AND FEET**

COMPETITIVE RATES

ABBY PORTER

01404 823875

Tom Vanneck

Furniture Restorer

&

French Polisher

**Modern & antique
commissions undertaken.**

Tel. 01392 860502

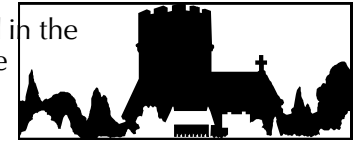
Mob. 07812810846

WHIMPLE PAROCHIAL CHURCH COUNCIL

HARVEST FESTIVAL

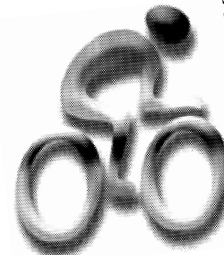
A Harvest Festival service will be held in St Mary's Church on Sunday 25th September at 11.00am.

Following this a 'Bring and Share' Lunch will be held in the Victory Hall. Everyone is welcome - just bring a plate of food to share - there's no charge.



Get On Y'er Bike!

Every year on the second Saturday in September thousands of cyclists aged from 8 to 80 (give or take a year or two each way!) can be seen on the highways and byways of England heading for the nearest church and on to the next. The object is to visit as many churches as possible during the day having obtained sponsorship per church visited or per mile cycled, with half the proceeds going to the county Historic Churches Trust and half to the rider's own church.



Whimble has a strong tradition of participation in this friendly, non-competitive (except against yourself) event, and the Devon Historic Churches Trust has previously given Whimble Church a grant for restoration work. If you would like a sponsor form or more information please contact **Mike Ellingham** tel. 822945

MOTHER MOLLY'S HOUSEHOLD HINTS

To make blonde hair shine, add the juice of a lemon to the final rinsing water. For dark hair, add malt vinegar.

Add vinegar to the water when washing a lettuce. It will help to crisp up the leaves and also remove insects and sand.

When storing lettuce in the fridge, it will keep longer if wrapped in newspaper.





Longfield Cattery

heated single and double chalets
personal care and attention

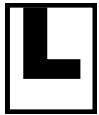


(now also looking after small animals)

01404 822275

Longfield ~ Church Road ~ Whimble ~ Exeter ~ EX5 2TF

"Learn a life skill with a Professional"



J.C.Ball



Driving Standards Agency Approved Driving Instructor

FREE:- First hour for beginners

FREE:- Loan of Videos and Books

FREE:- Pickup in Exeter & East Devon

2 Manley Close
Whimble
Devon
EX5 2UG
(01404) 822764

Refresher and Motorway Lessons "

"Safe driving for life"

DEVON HOME IMPROVEMENTS LIMITED

"Why Move - Home Improve"

Your local home improvements specialists for all those building and maintenance needs

Devon Home Improvements can provide you with hands on design and planning, together with a comprehensive supply of tradesmen and materials

We pride ourselves on our expertise and we believe we offer the most friendly and efficient service at very competitive rates.

- **Kitchen & bathroom design / installation**
- **Exterior & interior decoration incl. plastering services**
- **Landscaping, patio, decking, garden walls, garden structures**
- **P.V.C.u Facia & guttering incl. cladding**
- **Garage door installations**

Call today for your no obligation quotation

01404 823880

Or visit our website at

www.devonhi.com

Whimble History Society



Colonel 'Bob' Roberts - Whimble History Society

On Thursday 14 July 2005, Bob Roberts thought that he and Yvonne were on their way to a meal at the Fountain in the early evening. He noticed that the doors were open to the Heritage Centre, and assumed that some sort of private viewing was taking place, and so had a quick look through the door, saw a couple of members of the WI, and assuming it was to do with the WI, started to exit. Yvonne was still behind him, and she pushed him into the Centre, where he found Richard Webber and several members of the Committee, who had been lying in wait for Bob and Yvonne. Bob is relinquishing the role of Treasurer of the WHS, and the Society wanted to formally record their very grateful thanks for all his hard work over the years. I have stolen the speech made by Richard to that august group on that evening, and I have reproduced it below, as it says it all.

"Ladies and Gentlemen, as you are aware we have gathered here tonight to celebrate the achievements of one of our Committee members. A man who is more than just a Committee member. A man who little realised when he 'volunteered' to be Treasurer over 10 years ago, that he would become a significant figure in realising the ambitions of the Society, to own its own Centre.

A few years later, Bob, as you are all aware, not so much stepped into the 'breach' but more like into the chasm left by the tragic death of John Shepherd, on the day after the Linhay had been purchased. Bob took over as Chairman for the remainder of that year until I was persuaded to take on the post of Chairman. Having relinquished one post, Bob was persuaded/volunteered to become Chairman of the Building Sub Committee, which later incorporated the Display Committee, to oversee Phase 1 of the Heritage Centre Project. He steered the Society through all the traumas of raising money, applying for grants and the bids for the reconstruction of the Linhay as the Heritage Centre. This was achieved on time in May 2003, and Bob, by this time had acquired another post, that of Curator. Obviously Bob was not alone in this epic adventure- he was well supported by all the Committee members.

However, there was to be no let up, no resting on laurels, Phase 2 of the Whiteway Wing was set to be the next challenge.

EXETER CARAVAN CENTRE

For Sale - pre-owned caravans
also caravans sold on owners behalf.
Caravans always bought and sold.
01404 822116



or
07985399

London Road, Whimble



OAKS & PARTNERS

Auctioneers & Valuers

invite entries for their regular sales of antique & later furniture, porcelain, silver and plate, jewellery, metalware, paintings & prints and items of general interest at

The Old Tannery, Exeter Road, Cullompton

[We're easy to find on the Honiton side of Junction 28 of the M5]

The saleroom is open for receipt of items for sale
Monday to Friday between 9.00 am and 4.00 pm
Bring items along for valuation on a Friday morning

We will be pleased to call to your home
to discuss valuations without obligation or collect items for sale
Individual items to full house clearances

Tel 01884 35848 for further details or 01404 - 814540 / 812356 after hours
We will attend Sandfords, Whimble (by kind permission of Mrs Pratt) from 10.30 to 11.30am
on the first Wednesday of each month to discuss valuations or collection of items for sale

Sale catalogue can be seen on <http://www.invaluable.com>

e-mail address roger.shenton@btclick.com



Whimpe Post Office News

Many thanks to all of you who purchased your foreign currency with us over the summer months, we were really busy with your orders and with commission free transactions and a brilliant exchange rate we are confident that you benefited too.

Don't forget any currency purchased through us can be exchanged back into sterling over the counter.

Another reminder

for those planning overseas trips to Europe is to ensure you have a valid E111.

These can be issued over the counter – just bring in your National Insurance number.

The Post Office are promoting their Home Insurance this month with a 'too good to miss' offer of 12 months cover for the price of 10. See the special leaflet, this offer finishes on 30th September. If your home insurance is due for renewal then call for a quote you may be pleasantly surprised at the excellent service they provide.

Due to the Bank Holiday - benefits and Pensions normally paid out on Monday 29th August can be accessed from Friday 26th August

Got Pay As You Go ?

You can top up your phone simply at the Post Office, most major networks accepted.

Ask for further details.

You will be pleased to hear that as from 22nd August you will be able to use your Credit Card for most transactions at Post Office Branches

At last we have joined the 21st Century!!!!

Thanking you all for your continuing Support.

Jim & Alison

Fund raising and generous donations from the Whiteway family ensured that work would start on the extension sooner rather than later. It is important to mention at this point the tremendous pace at which the project was now proceeding. This pace created immense problems for all involved. The Whiteway Wing was opened in May 2005, goodness knows how many years ahead of schedule.

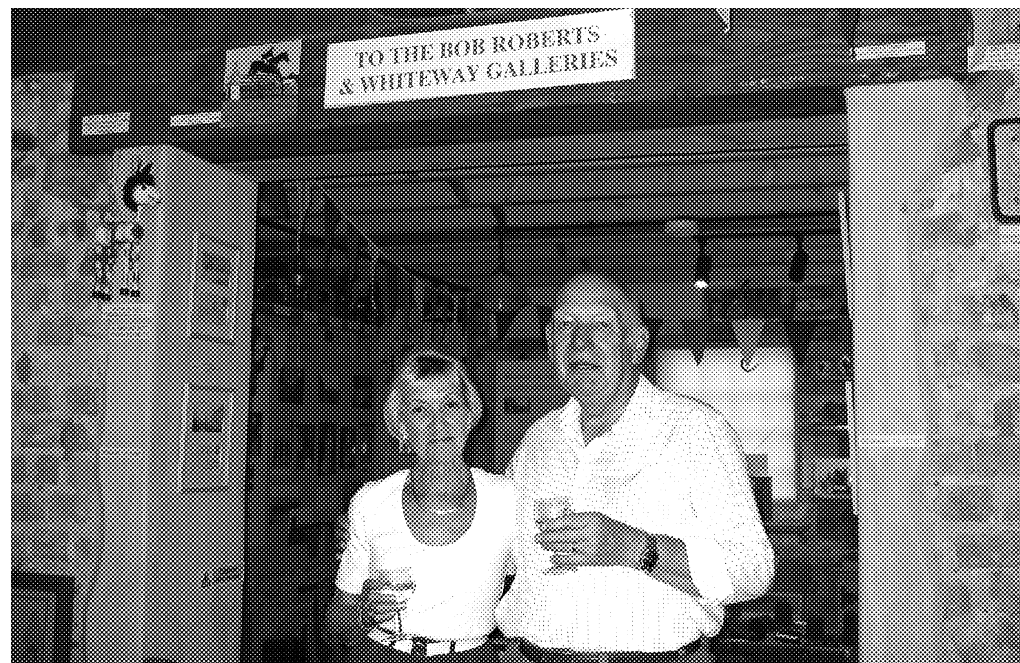
The planning of the opening was tinged with regret as Bob had announced that he would be stepping down from his post of Treasurer and Curator.

The Committee, hopefully unbeknown to Bob, has agreed that a fitting tribute for all his endeavours on behalf of the Society in realising its dream of a Whimpe Heritage Centre is that the Lower Gallery should be renamed the 'Bob Roberts Gallery'. The positioning is also appropriate as it links the John Shepherd Gallery to the Whiteway Wing.

I would now like to call on Bob Roberts to unveil the plaque to the Bob Roberts Gallery."

For those of you that know Bob, he was lost for words at this, which is a very rare event indeed! He was very touched by this act, and we are delighted that he will be 'next to' John Shepherd and the Whiteways, all of whom have played major roles in ensuring the completion of both phases of the Centre. It is a well-deserved tribute to a good man, and we were all delighted to have been there to share that moment.

Ed H



Records & Pop Memorabilia Wanted

Good prices paid for the following

Records. CD's, Rock & concert Memorabilia
Tour Programmes/ Old Tickets/ Magazines/ Sheet Music

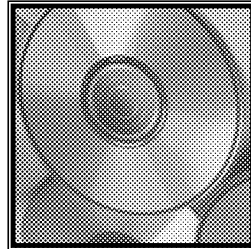
All types of music, large or small collections
Rock - Pop - 50's - 60's - 70's - Punk - 80's

John W Griffiths

Phone: 01404 823480

Mobile: 07836 369740

Email: hdicksrecords@yahoo.co.uk



Simon Turner

Independent Financial Consultants

Penraddon

Hand & Pen

Whimple

EX5 2PX

For

Independent Advice

on Pensions

Mortgages

Investments

Life Assurance

Inheritance Tax Planning

Tel : **01404 822587**

For free initial consultation

