

Whimble News



Oct/Nov 2020

Remember our website address:
www.whimblenews.uk

**THE
THIRSTY**

The Thirsty Farmer



**FARMER
WHIMPLE**

WHIMPLE, EXETER, DEVON, EX5 2QQ

Telephone: 01404 822287

www.thirstyfarmer.co.uk

**A FRIENDLY PUB, SERVING GOOD
QUALITY, LOCAL PRODUCE.**

**IT'S REALLY HARD TO KEEP UP WITH ALL THE CHANGES AND NEW
GUIDELINES AT THE MOMENT, SO PLEASE BEAR WITH US!**

(Do keep an eye on our Facebook page and Whimble What's On for any further updates after this issue has gone to press).

NOW OPEN 7 DAYS A WEEK AGAIN.

MONDAY - DRINKS ONLY FROM 5pm

TUES - THURSDAY LUNCH 12- 2pm DINNER 5pm - 9pm.

OPEN ALL DAY FRIDAY, SATURDAY & SUNDAY, BUT LAST FOOD

ORDERS ARE NOW AT 6pm ON SUNDAYS.

CLOSING TIME EVERY DAY NOW HAS TO BE 10pm

BREAKFAST SATURDAY IS BACK IN OCTOBER! 10am-12pm

SPECIAL MOTHER & FATHER'S DAY LUNCH ON NOV 1st!

**TABLE SERVICE ONLY FOR EVERY VISIT, TO MAX 6 PER TABLE,
CURRENTLY. DO CALL AND BOOK TO AVOID DISAPPOINTMENT.**

REMEMBER TO BRING A FACE COVERING WITH YOU, PLEASE.



**CHRISTMAS
MENU NOW
READY AND
BOOKINGS
BEING TAKEN**



Ed the Ed

Here is your Whimble News for October/November, which you will notice is a teeny-bit slimmer than normal. Thanks to our new friend, Covid-19, we have lost most of our reports on village activities. But just looking around, Whimble is not the sort of village to take that lying down, no siree, he said slapping his thigh with gusto (we have small bottles of gusto in the shop, very reasonably priced) and breaking out his Doris Day outfit (ask your grandparents!) Just a look through this mighty fine quality periodical that will tell you about 'Stitching the history of Whimble', the Whimble Scarecrow Festival, the Whimble Wanderers and 'Stars and Hearts'. Even the Parish Council have been to the well of creativity looking for new ideas to grab the attention of the wondrous populous of this fine village and have presented you with fine pen pictures of the Parish Councillors. I did ask for photographic records of said Councillors, but it was decided that photos would end up on the dart board of The Farmer. We also welcome our very own 'Agony Aunt', Delilah who will add comfort to many lives here in Whimble.

We have a number of new advertisers with us – Revive Health and Wellbeing, Tale Valley Care with Shelley Spry, Maths and Physics Online Tutoring, Halos in Rockbeare with Hayley who used to have her hairdressing business in the village, and Whimble Joinery. Harry Trimblett is Whimble Joinery, and you will have seen his work on sale in the shop; now he has set up this new venture and tells us a bit about himself on page 42. He is a very talented and personable young man.

I have returned to my attempts of working in the shop, and now prowl the retail counter on Wednesday afternoons between 3 and 5pm. It does seem a lot quieter than before lockdown so we need you to return and buy some of the fine things we have for your delectation. For one glorious morning, I had the great honour of working alongside my old Friday afternoon colleague, the famous Mrs Goggins (aka Karen Brown) – the woman who put the 'anger' into 'danger'. Great fun, and good to meet up with villagers who I haven't seen for a long time.

In the last edition, I was urging everyone to send in their comments about the Greater Exeter Strategic Plan...and since then the East Denon Council have withdrawn their interest and support. So don't send your comments in!! We also have a useful two-page article from the Protect our Whimble and Rockbeare Group which is worth a read.

We also announce the especially sad news that there will not be a panto in February 2021 – The Farmer will be full on Monday evenings (the normal rehearsal evening – I know, it's all a pretence!!) with luvvies who are just filling in time and reminiscing about past glories. Please spare a copper or two if you can.

If you would like to contribute to the December/January edition, then please send your article to either me or Bob on bob.scanlan@eclipse.co.uk - by 10th November.

Thank you!!!

EdH

WHIMPLE STORES



Whimple Stores is open again
until 6.00pm weekdays.

Trading hours 8.00am to 6.00pm weekdays
and weekends 9.00am to noon.

Last Royal Mail collection during the week is
4.30pm from the shop.

There is still lots to do in the mornings so we
are keeping the extra bit of time during the
week and on Saturdays to set up.

Mark, Jenny and Team



Welcomes You

ALL SERVICES AVAILABLE

Shop	Post Office	Refreshments
Fresh local bread, milk, fruit, veg, eggs	Cash withdrawals	Tea selection
General groceries	Banking services	Fresh coffee selection
Stationery & hardware	Bill payment facility	Hot chocolate
Logs & kindling	Postal services	Cold drinks
Newspapers	Euro's & currency orders	Cakes
Alcohol & tobacco		Chunk Fies & pasties

Regular or one off orders can be made.

Other services.

Pharmacy collections for Pinhoe surgery, Box office for local events, Book recycle/swap

The Square, Whimple, Exeter, Devon EX5 2SN
01404 822316



Otter Valley Veg

FRESH FOOD DELIVERY

WE ARE PROUD TO PRESENT OUR SELECTION OF FRUIT & VEG BOXES
Packed full of beautiful seasonal fresh fruits and vegetables
and delivered straight to your door.

OUR FRUIT & VEG BOXES

£20

SMALL

2 Baby Gem Lettuce
200g Beetroot Cooked
1kg Carrots [LOOSE]
1 Cucumber
1 Garlic Bulb [LARGE]
750g New Potatoes
300g Mushrooms [CUP]
1kg Onions [WHITE]
1 Red Pepper
1 Yellow Pepper
Spring Onion Bunch
1kg Vine Tomatoes

£25

MEDIUM

2 Baby Gem Lettuce
200g Beetroot Cooked
500g Broccoli
1kg Carrots [LOOSE]
1 Cucumber
1 Garlic Bulb [LARGE]
200g Green Beans
750g New Potatoes
2 Jacket Potatoes
300g Mushrooms [CUP]
1kg Onions [WHITE]
225g Mixed Salad Leaves
1 Red Pepper
1 Yellow Pepper
Spring Onion Bunch
1kg Vine Tomatoes
1kg Bananas

£30

LARGE

1 Avocado
2 Baby Gem Lettuce
200g Beetroot Cooked
500g Broccoli
1kg Carrots [LOOSE]
1 Cucumber
1 Garlic Bulb [LARGE]
200g Green Beans
750g New Potatoes
2 Jacket Potatoes
300g Mushrooms [CUP]
1kg Onions [WHITE]
225g Mixed Salad Leaves
1 Red Pepper
1 Yellow Pepper
Spring Onion Bunch
1kg Vine Tomatoes
4 Braeburn Apples
1kg Bananas
4 Conference Pears
4 Satsumas

- FREE delivery on orders over £20
- Order by 3pm for next day delivery
- Add to your box or create your own
- Full list of produce available online
- Orders taken 7 days a week

☎ 07933 515 524

✉ orders@ottervalleyveg.com

www.ottervalleyveg.com



Lockdown Legend

Dear Whimble,

Recently I was reading an article by the 'Royal Albert Memorial Museum' in Exeter about an exhibition that they were planning called 'Lockdown Legends'. They were asking for nominations for people that perhaps had gone over and above the call of duty, to help others during the unprecedented times that we have experienced lately.

I know that there are so many in our lovely village that have worked so hard to support others that have needed it, many just quietly getting in with it. But there was one person that immediately sprang to mind for me.



Katie Williams was instrumental in the setting up of the Whimble Volunteers very early on in the Covid Pandemic, she was so organised that when lockdown was announced, all volunteers were in place, forms had been sent out and all systems were ready to go quite amazing.

The support from volunteers, such as pharmacy collections, shopping trips, and cheery phone calls that has taken place over the past few months to help the more vulnerable in the village, has, quite simply, been amazing and has provided a vital life line to many.

Katie was well aware of the importance of the volunteers themselves and was always so thoughtful at supporting them and their wellbeing, making sure that no one became overwhelmed or overloaded.

As a mother of two small children (and wife to Taffy!) she had plenty to cope with herself and, understandably, she had 'bad' days and struggled herself and wasn't ashamed to admit it. Katie illustrated this beautifully with a photo for the first 100 days of the pandemic, depicting the good, the bad and the ugly days.

So, I nominated Katie, and I am delighted to say that I learnt this week, that she was one of the 100 Lockdown Legends chosen in Devon. I see Katie as a representative of all the amazing work that so many have done in Whimble, and I think she has done us proud!

The exhibition is online and, also, the physical exhibition will be in the Guildhall on the 28th Sep - 30th Oct followed by dates in Exeter Library and Princesshay.

Well done Katie.

Gill Wilson



Coleridge Medical Centre

Thank you all for your patience recently with access to the surgery. We have struggled with the deluge of enquiries regarding flu vaccination amongst other matters. Flu clinics are now booking with Saturdays being used to cope with the additional target groups and more time per patient.

We have been trying to reopen our services at the surgery. Most people can speak to a clinician on the day they ring up but we are encouraging patients to wait a few days if needed, to talk to their own GP or the GP who is dealing with their on-going problem. It greatly helps if you receive consistent care and reduces the need for unnecessary repeated conversations, tests and referrals. Video consultation has been a great new addition to what we do and can enhance a normal phone call just like talking to family on Facetime or WhatsApp. We use a secure app called AccuRx for video consultations, which also allows your clinician to send you messages, sick notes or links to helpful sites. You may also be invited to reply or upload images. E-consult allows you to send in non-urgent queries at any time of day and we endeavour to reply as soon as possible.

We have launched a refreshed website on:

<https://www.coleridgemedicalcentre.co.uk>

Besides some current national advice on Covid-19 from NHSE, there is lot of information about the practice, services and advice on simple health care. There are also forms you may find useful in terms of registration, accessing your notes or where to do an e-consultation. We want as many patients as possible to be electronically registered with the practice. If not already done, please give us permission to text you as this can be important for messages and reminders.

We are inviting more patients into surgery who need examination or treatment. We ask you to wear a mask when in the surgery and your clinician will also be wearing PPE. A lot of effort is going into making sure the surgery is kept as clean as possible and each room is disinfected after each patient. As you can imagine all this takes a lot of time. We are struggling wearing PPE on hot days, so please bear with us if the opening up process appears slow.

We are making every effort to catch up on things that have been delayed. We have extra clinics now on most Saturdays where we have been doing vaccinations, cervical smear tests, contraception procedures and bloods. We are working on a plan to provide flu vaccination this year to a wider group of people than normal. With the need for social distancing and wearing PPE this will be challenging. We will advertise this plan soon in all the usual formats.

Our nurse practitioners are doing amazingly well. Pip Hynam is a finalist for a Royal College of Nursing award for her work at introducing Group Consultations for diabetic patients to East Devon.

Tanya Cannon got a distinction in her Masters and we were very lucky to recruit Jules Anderson, an experienced nurse practitioner to replace our nursing lead Philly Evan who retired after forty year of nursing service.

We would like to enhance our current Patient Participation Group by forming a complementary, virtual PPG which will help us find out the view of a wider section of our patient group.

Stay safe

DATES FOR YOUR DIARY 2020:

Monday 26th October



We would kindly remind you:
**ALL ORDERS FOR OIL SHOULD BE PLACED AT LEAST
ONE WEEK BEFORE THE ABOVE ORDER DATE**

gkbatten@btinternet or 01404 823317



O'DELL PLUMBING & HEATING

jasonodell.plumbing@gmail.com

07974 818833

FOR ALL TYPES OF GAS AND OIL HEATING INSTALLATIONS.
BOILER SERVICE, REPAIR & BREAKDOWNS.
BATHROOMS & SHOWERS.
UNVENTED HOT WATER SYSTEMS.
UNDERFLOOR HEATING.



4094

Hats and Fascinators

- Bridal headwear and tiaras
- Mother of bride/groom
- Match your outfit/theme
- Men's buttonholes
- Unique fascinators for themed events
- Retrim a hat you already own
- Felt hats for winter
- Caps and berets



Tallulahmahoolah

Hilary Nowill

**The Pea, The Square, Whimble
822581**

SOUTH WEST PADDOCK CARE

JONTY CORBIN

01404 812139

07512678976

- Topping
- Harrowing
- Rolling
- Hedge-cutting
- Spraying - weed control
- Soil sampling
- Lime spreading
- Fencing, field shelters, stables.
- Fully insured and qualified

www.southwestpaddockcare.co.uk



KILN-DRIED HARDWOOD LOGS

IDEAL FOR OPEN FIRES AND WOODBURNING STOVES

Beech - Birch - Ash - Sycamore - Oak - etc
Free sticks with every load



For Helpful Advice and Prompt Deliveries
Telephone Exmouth (01395) 277242

Hello again from your District Councillor

In the last edition of the Whimble News I told you about the GESP (Greater Exeter Strategic Plan). The Strategic Planning Committee had rejected it and the plan had to go to full Council. Well I am delighted to tell you that the plan went to full Council, was strongly debated by Councillors and that we have now said goodbye to it.

If we had agreed to put the GESP site options document out to consultation we could have been in for a very rough ride indeed.

The Secretary of State for Housing, Robert Jenrick, (referring to the government's White Paper on the future of planning), commented a couple of weeks ago that Councils who have already looked at site options may well find developers being able to fast track those sites.

The government white paper on 'Planning for the Future' is the next good read. Please look at it if you are able and comment on it. A senior planner at the Council set out the Council's response to it last week and if you would like to take a look, perhaps for guidance please go to the EDDC website, go into committees and meetings and look up the Strategic Planning meeting for the 16th of September and there you will find the response in the agenda.



COVID -19

In Devon we have a very low rate of infection which leaves us quite vulnerable. Please stay vigilant and safe and pray that the vaccine is with us in the near future.

The Council officers are ensuring that their Covid-19 support pages are regularly updated so please peruse them if you need any local information.

A few weeks ago I placed some copies of Devon (covid related) news in the village shop (thank you Jenny and Mark). Pick one up when you are next in the shop, there may be something in there that may be of use to you (when finished it's very useful for lighting the fire or lining the guinea pig hutch).

Thank you Whimble for allowing me to represent you at the District Council. Sometimes I wonder what I have got myself into, but being able to represent you and protect the interests of East Devon and, more to the point, Whimble and Rockbeare, is truly worthwhile.

Please don't forget to give me a call or email me if you need help with any East Devon Council business.

From a chilly study,

Chat soon,

Cllr Kathy Mclauchlan

Tel: 07811 138177

Email: kmclauchlan@eastdevon.gov.uk

About Whimple Parish Council

Whimple Parish Council consists of the chairman and eight elected Parish Councillors. Every meeting is open to the public, who are encouraged to attend, except for those items where the Council formally resolves to exclude the public and press on the grounds that publicity would be prejudicial to the public interest. This would have to be due to the confidential nature of the business. This latter also applies to any sub-committee of the Parish Council.

The term of office of a Parish Councillor is four years, and Council seats are elected through 'first past the post' system and, like other UK elections, by secret ballot. If a vacancy occurs during the term of a parish Council, it may be filled by either election or co-option. Elections only occur if, following the advertisement of the vacancy for 14 days, 10 electors send a written request to the returning officer. If no request is received, the parish Council will be required to fill the vacancies by co-option.

The administration of the Council is managed by the Parish Clerk, who is a paid employee acting in a combined statutory role as secretary and treasurer of the Council. The necessary financial monitoring and reporting are the clerk's responsibility, and in this role the clerk is known as the "Responsible Financial Officer" (RFO) of the Council. The clerk is also the "Proper Officer" of the Council. They "enact" (cause to happen) the decisions of the Council, and they receive official correspondence and issue correspondence on the instructions of the Council. The clerk also prepares Agendas for meetings of the Council and its committees, gives notice of these to the Council members and the public, and records and publishes the minutes of these meetings. They are the formal point of contact with the public, and are a source of information for the public about the Council's activities. The clerk may not be a member of the Council

The Parish Clerk posts all Agenda's, Minutes, Planning Applications, Financial Information, Governance, Emergency Plan with contact details and much more on its website www.whimpleparishCouncil.weebly.com

Who is Who?

Chairman Cllr John W. Griffiths . John has lived in Whimple for 20 years and been a Councillor since September 2005. John owns and runs his own business in the village involving music sales and promotions. John is an active member of the Whimpletons, Village Hall Committee and the Parish Field Recreation Trust.

Vice Chairman Cllr Alan McArthur - Alan has lived in Whimple since August 1993 and been a Councillor since July 2003. Alan is a retired Chief Inspector of Police having served for 30 years in both the Surrey and Devon & Cornwall Constabulary's. He is married and has two daughters, one who has just completed her law degree at Birmingham University, and a son who attends Exeter School having previously attended Whimple school. Alan joined the Parish Council to get to know the village and its people and has not been disappointed.

Cllr Sara Randall Johnson – Sara moved to Whimble in early 1970's. She was elected onto WPC and EDDC in May 1991 local elections. Sara spent 10 years as Leader of EDDC retiring in 2011 and is currently also a DCC member first elected in 2009. Sara values and enjoys the strong community spirit that continues to grow from strength to strength in Whimble. She encourages rural village life to thrive through organic growth to keep our much needed local businesses and services alive. Sara retired from the aviation industry in 2013 giving her more time to enjoy gardening and watching sport, in particular cricket. She said "it's so nice to hear the cheers and shouts wafting across the village from the parish field and cricket ground again".

Cllr Billy Bloomfield – Billy has lived in Whimble all his life having attended Broadclyst School and has been a Parish Councillor since May 2012. Billy is well known in the village as a local handyman. Billy is passionate about preserving Whimble and, along with his wife, is a keen dog walker. Billy is also the caretaker for Whimble Primary School.

Cllr Denise Dearden –Denise has been a Parish Councillor since June 2016 and has lived in Whimble since 1999, enjoying the village life and the facilities that Whimble has to offer, particularly now that she has a little one at home. Denise works for Devon County Council's Business Support and Innovation team and works on projects aimed at helping and supporting our communities and joined the Parish Council to try to use that experience for the benefit of Wimple's residents.

Cllr Sam Walker – Sam has lived in Whimble for a number of years and has been a Parish Councillor for two years. Sam is a Nurse Practitioner and is committed to preserving the village aspect and life of Whimble.

Cllr Richard Lawrence – Richard has lived in the village for 4 Years and been a Parish Councillor for 2 years. Richard is a Marketing Consultant and married to Donna. He is a keen cyclist and can be seen walking Jasmine his pet Westie. Richard became a Councillor in order to help conserve and preserve village life for the benefit of local residents.

Cllr Robert McCreddie - Rob has lived in the village for 6 years and has been a Parish Councillor for two months! Rob is currently working from home due to Covid -19 as marketing manager for a mail order bookseller with previous experience in the footwear and cycling industries and prior to that 16 years of working in various IT roles in the NHS. Rob has been married for 21 years to Jo and has a rather barky but loving Jack Russell called Digger. Rob became involved in the Parish Council as he felt the best way to have an impact and protect the local environment is to be involved at the Parish Council level to hopefully help maintain the way of life that his family moved to Whimble for.

Continued overleaf

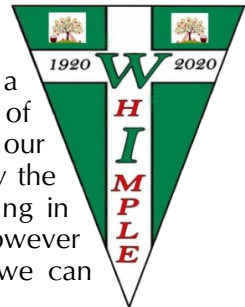
Continued

Cllr Kevin Staddon – Kevin has lived in Whimple since 1966 and attended both Whimple Primary and Broadclyst Secondary School. Kevin is a train driver and a keen photographer and amateur radio enthusiast. Kevin is an active Trade Union member and became a Parish Councillor 2 months ago as he would like to do something to help benefit and retain the village status of Whimple

Parish Clerk – Kevin Finch – Kevin has lived in Whimple since 2010 and became Parish Clerk in 2017. Kevin was an Area Director in the Financial Sector for over 25 years and more latterly a Senior Manager with the Charity Commission leading an Operational and Governance team. Kevin is married to Nicky and has two daughters who all work in various roles in the NHS Exeter. He is a keen music fan and Exeter City supporter and is passionate about ‘all things’ Whimple.

Whimple WI

What can I say? Very little I am afraid! Our Committee has had a ‘socially distanced’ meeting to discuss the way forward in terms of the hygiene precautions we would have to take, if we resumed our meetings in Victory Hall this year; they are very daunting to say the least! In the meantime, we are looking at other ways of staying in touch with our members until the future is clearer. We are however currently arranging next year's programme, in the hope that we can safely meet up in 2021.



Although all our official Centenary celebrations are temporarily on hold, five of our more senior members decided to hold an elegant afternoon tea outdoors to mark the occasion in July, whilst carefully socially distancing of course! They thoroughly enjoyed the get-together, so well done to them and to Lucy Channon for organising!

We still intend to plant a commemorative cherry tree, but the “when and how” are still to be decided. If not this year, then in the spring of 2021.

Continue to stay safe and well, and hopefully we will all get together again soon.

Barbara Ackland

For more information on Whimple WI, please contact **Marilyn Mills** on 821860



**PLANET SAL FOR
GIFTS AND CARDS
WHICH ARE A BIT 'UNUSUAL'**

(Like the owner..)

3, BLACK LION COURT,
HONITON EX14 1ES
01404 47555

OPEN MON 11-3

TUES-SAT 10-4.30

www.planetsal.co.uk
info@planetsal.co.uk



R J Spellman

Renovation & Property Maintenance

.....

Internal | External Painting & Decorating
Wallpapering & Coving
Carpentry & Flooring
Plastering & Dry Lining
Kitchen Fitting
Fitted Furniture & Wall Panelling
Window & Door Fitting

Fully Insured

.....

For a free quotation or advice please get in touch:
e: rjspellmanrenovation@gmail.com
w: rjspellmanrenovation.co.uk
t: 07511 533 765

Gas & Oil boiler repairs
Safety certificates
Servicing
Installations



FlameFix™

A local company providing
a personal service

Call Jules

07883 037667

Visit us at www.flamefix.co.uk
and read why customers say
we're highly recommended

Oftec registered
Gas safe registered



FIRE SECURITY

UK LIMITED

Fire detection and alarm systems

**INSTALLATION, COMMISSIONING
& SERVICING**

Maintaining all types of fire alarm systems

- Domestic, commercial & industrial
- 18 years of experience
- Emergency repairs and fault finding
- Fire certificates
- Design and supply complete systems
- Schools, lets, small/large properties

Contact Chris for a free quote

07875 841288

info@firesecurityuk.co.uk
www.firesecurityuk.co.uk

Stars and Hearts 2020



Introduction

This is a project to reflect the sense of coming together in Whimble during the Covid19 pandemic in 2020. Many of us felt fearful, and wondered if we would ever be able to hug our loved ones again. 2m social distancing became the norm as did wearing masks and queuing for our food and supplies. Lockdown became a new addition to our vocabulary.

However, in Whimble, we looked out for each other. There were people checking up on neighbours, doing shopping, fetching prescriptions and so on. We met new people and made friends in the queue for the shop, or whilst doing our permitted one hour daily exercise.

Many commented, without planes flying and the lack of car journeys, the pace of life seemed to slow. We took to walking and cycling instead of cooping ourselves up in cars. Many experienced a sense of peace and reconnected with nature.

Project Outline

To sum up the year and express this sense of community, we will be making handstitched felt stars and hearts. On one side there will be an embroidered pattern with beads and on the other there will be names of people in the village or a word to reflect how we felt at this time. We hope as many people, young and not so young will join in.

All the stars and hearts will be displayed in the Church in December 2020. Afterwards, they will be returned to the makers who can hang them on their tree at Christmas in years to come or give them as gifts.

Coordinator: Hilary Nowill, The Pea, The Square, Whimble
(01404 822581 or tallulahmahoolah@btinternet.com).

No prior experience of sewing is required.

Grateful if you could donate £5 to cover materials.

Stitching sessions

You can stay for a whole session or drop in for a shorter time. Turn up and stitch sessions at The Pea will be:

Thursday 15 October	9.30am – 4.30pm and 6-8pm
Tuesday 3 November	9.30am – 4.30pm and 6-8pm
Sunday 29 November	9.30am – 4.30pm

If you can't make one of these, contact Hilary and we will work something out.

Hearts and Stars for Whimple

This project aims to give all of us the opportunity to reflect on the coming together of our community during the COVID pandemic.

Sew a Heart or a Star for a friend, relative, neighbour or volunteer who offered someone support and help to over the past months. One side will have a beaded design and the other, a single word of your choice

All the Hearts and Stars will be displayed in the Church throughout December and returned to you after Christmas

Pop-in for an hour or a whole session

All ages welcome.

No sewing skills needed.

A donation to cover materials.

Thursday 15th October

Tuesday 3rd November

9.30-4.30 and 6-8

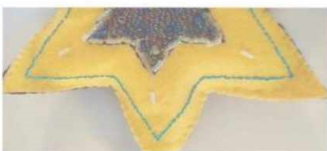
Sunday 29th November

9.30-4.30

Contact Hilary at THE PEA in The Square.

Tel: 822581

email: tallulahmahoolah@btinternet.com





WHIMPLE WANDERERS



Whimble Wanderers is a group of local people who enjoy walking. Why not come and join us? The day of the walk changes every week making it possible for everyone to join in. I post details on the Whimble What's on Facebook page but I also contact a couple of people by phone. I am quite happy to do this if this is the only way to get in touch. My number is 758677.

What a great way to explore our beautiful county, find new secret paths, enjoy the fabulous countryside and have a natter along the way! There have been lots of walks around Whimble - one which included a very informative talk by Louise Walmsley on the history of Holly Ball Lane and the Holy Well.

We are venturing further afield now. Our last walk was Darts Farm to Topsham, taking in the RSPB wetland area and stopping in Topsham for a sneaky coffee. I am planning on doing Sidmouth's beautiful Peak Hill and Mutters Moor walk, taking advantage of the fabulous views and the Autumnal colours. The Byes in Sidmouth is a truly hidden gem. Also, Newton Poppleford to Tipton St John, Budleigh to Otter Mill etc.

Perhaps you know a beautiful walk that you would like to share with the group? Come along and we would love to see you.

Just a note re Covid-19. If the group is over six we are very careful to socially distance.

Suzanne Rothwell



Longfield Cattery

heated single and double chalets
personal care and attention



(now also looking after small animals)



01404 822275

stephen@longfieldcattery.co.uk

www.longfieldcattery.co.uk

Longfield ~ Church Road ~ Whimpe ~ Exeter ~ EX5 2TF

The key to your future peace of mind

Marsh Barton
01392 277467

Units 1,2 & 6 The Space Place
Alphin Brook Road
Marsh Barton
Exeter EX2 8RG



(South West) Ltd.
MASTER LOCKSMITHS
EST 1974

Sidwell Street
01392 217328

131 Sidwell Street
Exeter
EX4 6RY

email: sales@guardiansecuritysw.co.uk
www.guardiansecuritysw.co.uk

ACCESS CONTROL



CAR KEYS



CCTV



HOUSE KEYS



IRONMONGERY



MOBILE LOCKSMITH SERVICES



SAFES



Masonry & Conservation Specialists

Repairs to Listed and Historic Properties
Traditional Lime Mortar Repointing
Brick Repairs - Walling

Clyst St. George, Near Exeter

Tel: 01392 879824 Mob: 07825 698507

Email: info@abacusstoneconservation.co.uk

Web: www.abacusstoneconservation.co.uk

Window Cleaner

High reach hot water system
Frames and doors all in
Gutters/Fascias Cleaned

For that personal service

Sean Harris
814963
07737 419077



Straightway Head
HOUSE
LUXURY BED & BREAKFAST

Whimble, Exeter, Devon EX5 2QS
01404 822177 / 07894 575975
contact@straightwayheadhouse.co.uk
www.straightwayheadhouse.co.uk



STRAIGHTWAY HEAD HOUSE BED & BREAKFAST

Luxury Country House Bed and Breakfast Accommodation in a peaceful rural setting on the edge of the village, with stunning views over Dartmoor

All rooms are en-suite and furnished to a high standard.

*Have you got a special birthday or anniversary coming up?
Why not hold your party here and let us do all the hard work for you?
Cally is a Cordon Bleu trained chef with many years experience.*

Ample Parking / Transfers to Exeter Airport

Holy Well, Holly Ball Lane

Those of you who know me, will know that I am really boringly interested in researching local history.

During Lockdown, I have been trying to find out more about the Holy Well at the top of Holly Ball Lane. Although not well known now as, like so many Holy Wells, it fell out of popular use, there are features of its history that suggest it may have been important locally prior to Domesday.

Unfortunately there is no one place to go to find out about this so it is a case of ferreting around and putting together a sort of jigsaw of information. Devon Heritage place the site of the well on the top of the hill at Holly Ball, although there is nothing to be seen there now.

Local knowledge places the well, where the catchment now is, at the bottom of the hill. A pipe runs under the road into two reservoirs which provide water to Escot. However, there is also a story that the water from the disused well was diverted to the catchment perhaps 150ish years ago.

Thank you to everyone who has helped so far, including the lovely chaps at Escot. I am now hoping that there are more people in the village who might be able to add something, however small, to the body of information I'm slowly collecting. If so, please contact me:

Louise Walmsley, on 371433 or walmsley_louise@yahoo.co.uk.

Many thanks.



Whimble Victory Hall



It was great to welcome back the whole school, the Pre-school together with the Breakfast Club in September, Some of our regular users have also resumed within our new rules. The Officers of the Hall Committee have worked very hard to prepare for this, including buying and installing new equipment and signs. Sue Thorne has been key to developing the plans and undertaking a new cleaning regime. Many thanks Sue, we could not have done it without you.

During lockdown two very generous Whimble residents donated a total of £1500 and Jill Courtney single-handedly raised over £1500 from making face coverings. This was amazing. Other residents have sold jams and held sales to help with the Hall fund. So far this year over £8000 has been raised for the refurbishment of the hall. This is an amazing amount, especially under the present circumstances. Thank you all so much. Our plans for Soup'n'Sarnies and other fund raising events have been paused but we intend to hold these again – one day.

Maria Wallis, chair.



WHIMBLE TENNIS CLUB

A well-maintained private court near the centre of the village

- Quality private court
- On court booking system
- Club 'just turn up' doubles sessions
- Coaching
- Low cost

Contact Viv Brown to join or for more details on 07876653264 or whimbletennis@gmail.com

Shelley
Spry



Tale Valley Care

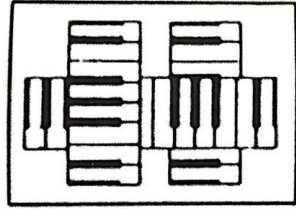
Unit 6 Lees Meadow
Talatton EX5 2SG
info@talevalleycare.co.uk
07873 240459

Providing Personal Care Services in your home

Other services offered include:

- Washing
- Ironing
- Shopping
- Driving to appointments
- Chaperone

NVQ qualification in lead adult care
Insured and DBS checked



Emma Palmer
Music Tuition

I primarily teach piano, but also clarinet & saxophone, in Whimble and also online.
From 7yrs upwards, no upper limit!
Fun and instructive lessons.
Competitively priced, various lesson lengths available, daytime and after school slots.
Contact me for more details:
01404 823083
empalmusic@gmail.com



PF&A

PREMIER FENCING & ASTRO

**QUALITY FENCING & ARTIFICIAL GRASS
AT PRICES YOU CAN AFFORD**

EXETER • 01392 341 315

EAST DEVON • 01395 205 563

info@premierfencingandastro.co.uk

www.premierfencingandastro.co.uk

FENCING ■ DECKING ■ GATES
ARTIFICIAL GRASS ■ LANDSCAPING

JULIAN WILSON

Electrical Contractor

1 Higher Woodhayes
Farm
Whimble

Tel: 07977 753158

BARRY SEAFORTH DECORATING SERVICES

Est 1979



PAINTING WALLPAPERING

SPECIALIST FINISHES MURALS TILING

COVING CARPENTRY ALTERATIONS

REFERENCES AVAILABLE

Call Barry on 01297 22434

or email

barryseaforth@gmail.com

YOGABHOGA

VINYASA FLOW YOGA

with Kate Hawley

Mondays 10 - 11.30am

Tuesday 7.00 - 8.30pm

Escot Village Hall, Gosford Lane, Ottery St Mary

Price: £6.00 per class or £30.00 for block of 6 classes

FIRST CLASS FREE!

Suitable for all ages, abilities, flexibility and gender.
Classes include postures, breathing exercises, meditation
and relaxation.

For more info please contact Kate on 07706215645 or
email yogabhogadevon@hotmail.com

Find us on facebook @yogabhogadevon

Serenity Bookkeeping Devon



Take the hassle out of your business
accounting by using a local bookkeeper

Ideal for Small Businesses, Sole
Traders and Partnerships.

End of year accounts prepared
Vat Returns

Self-assessment returns
Day-to-day bookkeeping

Contact Helena: 07916 135850

info@serenitybookkeepingdevon.com

www.serenitybookkeepingdevon.com



WHIMPLE
Pre-School
& Toddler Group

Despite these unsettling times, Whimple Preschool continues to offer a fun, stimulating and nurturing environment for 2 - 4 year olds. Whilst following the government guidelines to help keep us safe, the children benefit from lots of fun activities to help them develop, learn, explore and have fun. We make lots of use of our fantastic outside space which creates a perfect place for children to learn, whilst keeping healthy in the fresh air. We have a low child to adult ratio with experienced and passionate staff along with small group numbers which help children feel safe and secure to express themselves and learn.

If you have a child under 3 and are thinking about sending them to preschool, please do get in touch and we can tell you all about us!

13 children left us at the end of July to move on to Whimple School, we had a lovely few weeks with them during the summer after coming back from lockdown, finishing off with a celebratory garden party on the last day of term. These children have all done amazingly well with their transition to school, they were well prepared and very much bonded as a group which gave them the grounding and confidence to move on to the next stage of their education.

We are so proud of them and wish them all well.



"The manager and staff work together to provide an inspiring and nurturing environment for children to enjoy."

"Staff have high expectations for all children"

(Comments from Ofsted Dec 2019)

Please see our website for more information

www.whimplepreschool.com

Jo Sibley



www.whimplepreschool.com



Whimble
SCARECROW
festival

HALF TERM WEEK

Monday 26th October
to Sunday 1st November 2020

Scarecrows must be made from
recyclable and reusable materials.

Register your scarecrow entry by Monday 12th
October 2020 by emailing your scarecrow's
name and address to whimblefows@gmail.com

Buy your scarecrow maps from
Whimble Stores and The Thirsty Farmer
(suggested donation £2 per map)

Vote for your favourite scarecrow!
Votes to Old Post Office post box at end of trail.



IS THERE A PANTO NEXT
YEAR?

OH, NO, THERE
ISN'T!!



Sadly, another Whimble institution has hit the Covid rocks and we are having to delay our beloved Panto until a safer time - hopefully February 2022.

(Neil might have finished the script by then!)

We have had a very long run with no missed years for ages now - it's such a shame.

However, if the summer next year finds us all in a much better place, we do hope to put on a spectacular fundraiser!

Will it be Dame Racing again? Or something even more outrageous?

Who knows? But it will be 'different' - that's for sure.

As your intrepid stage manager and scenery person, I will actually have a Christmas free of prop glue and paint fumes for the first time in 13 years!

Although, every year, I have a good moan about this to anyone who is unable to escape and has to listen, I will actually miss it like crazy.

We have such a great cast and crew every year that it really is as much fun as it looks, and we love to look out at everyone who comes to see us getting involved and having a good time. Some even stay awake all the way through!

So we just want to say thanks so much for all your support through the years, and we all hope you stay well and keep safe until we get a chance to entertain you once more x

Stage Manager Sal



Local legal & financial advice

Call our Exeter office on:

Legal Services **01392 42 42 42**

Financial Services **01392 34 64 64**

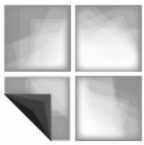
Or contact one of our other offices

Ottery St Mary 01404 81 22 28

Sidmouth 01395 51 24 43

Visit gilbertstephens.co.uk for more info

Gilbert Stephens is the trading name of Gilbert Stephens LLP which is authorised and regulated by the Solicitors Regulation Authority (no. 536070) and Gilbert Stephens Financial Services Ltd which is authorised and regulated by the Financial Conduct Authority (no 579899).



PAUL LAMBELL WINDOWS & DOORS

*Windows / Doors / Conservatories
Facias / Guttering / Cladding
Full Repair Service*

- Free quotations.
- Top Quality A Rated Windows.
- Over 25yrs Experience – local tradesman offering top quality workmanship.
- Repair service includes – Broken Locks, Handles, Window Hinges, Misted Sealed Units etc
- Extremely courteous and friendly service.

07983 224679 * 01404 850546

email: info@plwindowsanddoors.co.uk

Whimble History Society



Future Events

Sadly due to the Covid-19 outbreak we have had to cancel all the events up until the end of the year (The September Talk, Apple Pressing, The Auction, Jim Causley's Christmas Concert and Christmas Lunch). The Wassailing on Monday 18th January 2021 is still obviously at risk of cancellation (a decision will be made later).

However, the Committee has pencilled in Friday 26th March as a possible date for the Annual General Meeting.

Government Grant

We are pleased to report that our Treasurer applied for a Government grant to help us through the lockdown etc. and we were successful and received the full amount of £10,00. This will go a long way to help the Society with its annual running costs which are normally in excess of £6,000. These are usually off-set by £3,000 annual income from events, but in 2020 and 2021 events' income will be drastically reduced due to lockdown etc.

Research Groups

The Committee would welcome any ideas members may have for possible research groups or other online activities that could be developed over the winter months.

Obituaries

It is with great sadness that we report the passing, during these challenging times, of two stalwarts of the Whimble History Society, Lt. Col. Bob Roberts and John Aiton.

POW&R



Protect our Whimble & Rockbears Group

www.powr.live Email:- contact@powr.live

In the world of theatre, the 'show must go on'. It would also summarise how our village has stood up against a string of adversities associated with the lockdown and post lockdown period. We live in a precious and historic village, where we have seen the very best of the community coming together, keeping safe together, keeping well together.

In line with our original remit of protecting Whimble and our neighbour Rockbears, from ever-encroaching development, we have been working hard over the last few months challenging some major development schemes. One of these schemes was a development of 200 Houses adjacent to Gribble Lane (Planning Ref: 19/1798/MOUT). This has been deemed an Invalid Application.

At its Full Council meeting on the 20th August, East Devon District Council agreed to withdraw from the Greater Exeter Strategic Plan (GESP), following a recommendation from the Strategic Planning Committee on 23rd July, in which our Councillor Kathy McLauchlan is a member.

The Council approved the Committee's recommendation to:

- Notify our district partners that we are withdrawing from the GESP.
- Give assurance that the Council will fulfil its duty to co-operate in an ongoing and positive partnership.
- That the council immediately begins the process to renew its local plan.

A recorded vote was taken and 33 Councillors voted in favour of withdrawal, with 22 against and 1 abstention.

The Strategic Plan was ill-conceived, hidden in the fog of Covid 19, with many significant flaws and contradictory statements. In addition, it would have sanctioned vast new housing estates covering Whimble and Feniton, destroying the rural fabric of this area of Devon. The Strategy was created to meet the housing needs of Exeter, but with limited land in which to expand the City needed the surrounding Districts to meet demand. It appears that the Greater Exeter Strategic Plan is now defunct, although Mid Devon District Council has been asked to continue to prepare a revised joint strategic statutory plan.

As soon as one threat has passed another appears around the corner. In August 2020, the government issued its new vision for planning reform across the country in the form of a White Paper; Planning for the Future.

There can be few White Papers that have been put forward for discussion and consultation that are riddled with such false and misleading information. It is full of criticism of Planners when they are purely implementing the requirements of the current planning law. In addition, the Government wants to take away key democratic areas from Local Government and centralise many systems. This is not linked to the Localism Act 2011, as it's not localism - it's vandalism.

One of the key questions is affordability of housing, which is not part of the planning system. We do need new homes, but in the right place and linked to basic economic principles of supply and demand. Developers currently appear to hold back land with planning permission to 'drip feed' new development to maintain high prices.

It is a fallacy to describe the planning system as beginning to 'crumble'; as stated by the Prime Minister. Planning Departments are very streamlined operations with much being done online and by a high standard of professionalism, and this is being undertaken with limited resources.

The Attlee Labour Government brought in some ground breaking legislation, including the New Towns Act 1946 and the Town and Country Planning Act 1947, which has evolved over time with the creation of Development Plans. Planning works best when decisions are taken at local level. The White Paper places emphasis on design, but in reality, many major developments start with meaningful aspirations, with 'good design criteria', but when it comes to the developers / house builders they end up with lower standards. The White Paper criticises the number of houses that have been built, but the Conservative Government has been in power since 2010 and it is Government that sets the housing numbers for each Local Authority to meet.

The proposed legislation is a Developer's charter to build what they want, where they want and to destroy much of our beautiful rural environment. It builds a more centralised planning system with control at Westminster. It takes away areas of democratic control from Local Councils to make critical decisions on developments.

Lastly, the POW+R Group are making a representation to the Inspector at the next hearing on the Cranbrook Master Plan by the end of September. This will be focused on the Gypsy and Traveller site provision, as it was postponed from February due to work on the Sustainability Appraisal being incomplete. This is a very serious issue for the people of Whimple. It is worth stating that in April 2019, at plan publication stage, the Cranbrook Plan received a total of 431 representations, the majority from Whimple Parish, of which 234 had issues / objections to the siting at Cobden Lane of ten permanent pitches for Gypsies and Travellers.

POW+R Group is on the case and will report back.

KEEP WELL.

KEEP SAFE

Press and Publicity Officer: **Alan Lascelles**



DAN PLANK

Master Thatcher

T: 01404 823081



M: 07881 942516

daniel.plank@yahoo.com

djpmasterthatcher.co.uk



The Devon Ceilidh Band For All Occasions

See our new website: slackmagirdle.net

Find us on Facebook

for more details or to contact us:

01404 823083 empal1@icloud.com

New look, same great band!

drainwizard

Drainage and water main solutions

- blockages
- jetting
- CCTV surveys
- repairs
- lining
- drain tracing
- pitch fibre reforming
- pipe bursting
- septic tank/treatment plant installation
- soakaway problems
- water leak detection
- water leak repairs
- moling
- renewals

Tel: 01392 461670

Mobile: 07834 712345

www.drainwizard.co.uk



WE KNOW WHO WANTS
TO LIVE IN YOUR PROPERTY



ASK FOR A FREE VALUATION

FOR FRIENDLY AND PROFESSIONAL
ADVICE CALL US ON 01404 814306

www.redfernsproperty.co.uk



Zoopla.co.uk

Lee Maddicks

David Drew



It is with great pleasure that Whimple News is able to announce that an 'Agony Aunt' has recently moved to Whimple and has kindly agreed to run a column in Whimple News. She will offer support and guidance to villagers, and we are delighted that three letters have already been submitted and answered in this edition.

Delilah is really looking forward to hearing from you. Although she is not part of the Whimple News team, we would be happy to forward any questions or problems to her for future editions.

Dear Delilah

My wife is getting very upset because the lady next door keeps sunbathing nude in her garden. She wants me to go round and tell her that it's inappropriate, should I get involved?

Agitated from Dince Hill Close

Dear Agitated,

Personally I wouldn't, I would just sit on the fence.

Dear Delilah

My wife always cooks me the most delicious meals once she gets back from work. Last week she looked really tired so I told her to sit down and I did the washing up. Now she expects this every evening, going off to watch the telly and taking for granted that I will put the plates in the dishwasher.

Perplexed of Grove Road

Dear Perplexed

And your problem is?

Dear Delilah

This is the first time I have written to an agony aunt but I need help with what could be a really critical decision.

It all started when I began to worry that my wife was being unfaithful. We've been happily married for twenty years but recently she has been spending more time out in the evenings with her 'girlfriends'.

It all came to a head last week when she said that she didn't think I was really interested in her anymore, and had actually become rather boring.

This is obviously all very worrying.

I don't want to ask her what's going on because I'm honestly not sure I want to bring everything to a head. Nevertheless, last night I decided to follow her and see what she was up to. She left the house at 6.30 and headed for the Thirsty Farmer.

I followed her on my new Pinarello Dogma cycle and was waiting outside, crouched behind my bike, to see who she came out with when I was shocked to realise that the rear derailleur was bent. I have no idea how this happened but want to know if this is something that I can fix myself or do you think I should return it to the dealer?

Distressed of Slewton Crescent

Dear Distressed

Clearly, the love of your life is experiencing significant damage possibly as a result of neglect. If left unaddressed this might eventually lead to a total breakdown and inability to move forward. Can I recommend a thorough refurbishment to reverse the immediate problem followed up by lots of loving attention to ensure everything remains in excellent condition?

In the meantime, a visit to DC Cycleworks in Whimble might be in order.

To contact Whimble News: email Bob at bob.scanlan@eclipse.co.uk



the
mindful
gardener

*What business do I have
in the woods if I am thinking of
something out of the woods?*

Thoreau



Mindful maintenance of
the garden you have
created



Mindful planting schemes:
transforming your desire into a design
that works for its purpose



Mindful of your current
wishes for your garden



Mindful of the
environment



Mindful attention
to special plants



Mindful of
biodiversity

....giving you peace of mind

For more information contact Elaine Nicholas 07917386254 elaine@danublu.org.uk

IT support

I can offer IT support to those working from home.
Just message me or email cjtemplemurray@gmail.com

Chris



Open Tuesdays to Saturdays from 9am

**To book an appointment ring 01404 823400 or 07494 365547
or book through my Facebook page**

New Inn Cross, Whimple EX5 2TT. Tel 01404 823 400



U B U N T U

— Wildlife Trust UK —

IMPLEMENT - INTEGRATE - INSPIRE

The Ubuntu Wildlife Trust is a non-profit organisation dedicated to the conservation and preservation of Africa's biodiversity and became a registered charity as of this year (2020). The charity was formed by like-minded friends who share a love for the natural world, with a burning passion for Africa's wildlife.

After witnessing first-hand, the devastating effects of illegal poaching on wildlife in Africa, this gave the trustees a sense of urgency that more is needed to be done to protect our threatened and endangered species. The realisation that one day their children and the generations after them, may not be able to experience animals like rhino, elephant and African wild dogs in the wild is just unbearable to think about. These emotions were part of the driving force behind the birth of Ubuntu Wildlife Trust.

Ubuntu Wildlife Trust is asking for you to join them in the fight to protect Africa's precious wildlife. With your support, the charity can continue to support the men, women and anti-poaching dogs who are fighting on the frontlines to safeguard Africa's most iconic and endangered species.

On Tuesday 22nd September the charity held a fundraiser at the Thirsty Farmer, in collaboration with the 'Secret chef' to bring an impressive five course meal to their guests. Two Exeter Chiefs players, Jacques Vermeulen and Jannes Kirsten came to the event to show their support. The evening also celebrated World Rhino Day with an educational talk led by one of the trustees.

The charity's next event the 'Quiz and Chilli' fundraiser due to take place in October has been postponed due to current government guidelines for COVID-19.

The charity is sincerely grateful for all the support they have received through public donations and attending their charity fundraising events.

If you would like to consider donating to the charity you can visit their website: www.ubuntuwildlifetrust.com or visit their social media: @ubuntuwildlifetrust to keep up to date with their latest news.

Jemma Hearn, Trustee, Ubuntu Wildlife Trust

HALO'S @7

OPENING NOVEMBER 2020

Unisex Hair Salon

Hazel Grove 07395 519788 Rockbeare



EASTERBROOK, EATON LTD



Chartered Accountants-Registered Auditors

**Relax!.....let us take care of all your Taxation,
Accountancy and Business affairs.**

For a *free initial consultation*, contact us at
8 Jesu Street, Ottery St. Mary, EX11 1EU

Tel: 01404 812555

Email: advice@ee-osm.co.uk

Web: www.easterbrooks.co.uk



Avalon

PLANNING & HERITAGE

Avalon provides advice on an array of planning and historic building issues, adding value to larger or more complex projects, providing a bespoke service to suit any requirement.

Whether you intend to construct a new building(s), expand your current site, adapt an existing structure or evaluate an investment opportunity, it makes sense to consult a professional who shares your aspirations.

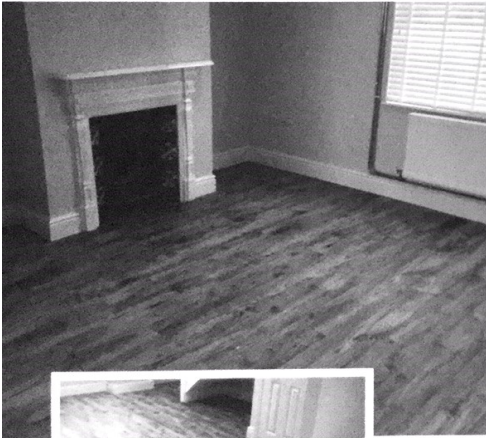
11-15 Dix's Field, Exeter
01392 581150 (also in Whimble 823617)
07979 518976

murray@avalonplanning.co.uk

www.avalonplanning.co.uk

ABSOLUTE FLOORING SOLUTIONS

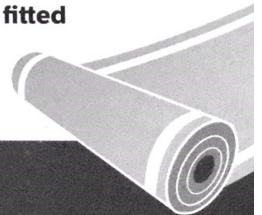
All aspects of floorings covered



SPECIAL OFFER!

**SAXONY CARPET (choice of colours),
QUALITY 10mm UNDERLAY and
FITTING £18.99 m2!**

- Large selection of carpets and vinyls
- All aspects of wood flooring (Real wood, laminate etc)
- High Quality LVT tiles
- All subfloor works carried out
- All above supplied and fitted
- No job too small



**Gary: 07792 197510
Craig: 07846 840175**



STITCHING THE HISTORY OF WHIMPLE

Well it looks like some type of lockdown is seeming inevitable. Are you wondering how to pass the time? .

How about depicting the history of Whimble in Stiches? I saw this idea In the newspaper and thought it looked like something we could get involved in as a community. Something to bring alive the history of Whimble for future generations.

I am working with a couple of friends to make a plan as to how this will work and will be posting it up on Whimble What's On when the plan has hatched. We would like to have some idea who would like to be on board.

The pictures in the article are appliquéd which makes the embroidery aspect not too scary. Hillary Nowill is ready to help with embroidery tips, and topics will be listed and ideas given.

I think it would be a great way to pass the long Winter days, so do please let me know if you are interested in joining us.

Suzanne Rothwell: 658677

suzannerothwell123@gmail.com



AVAILABLE FROM WHIMPLE P.O.

Now is the time to shop local

Stay safe everyone.



Also available from us in bag in box!!

FREE LOCAL DELIVERY

Courtneys of Whimple

cider.apples@hotmail.com



Perfect for Gin, Rum & Cider Lovers.



Low Alcohol and Fruit Ciders
NOW AVAILABLE TOO!

Check us out:

www.courtneys.online

or Whimple Stores



41



THE EXE GIN

Delightfully smooth



**GRUMBLEBEE HONEY
SPICED RUM**

Whimble Joinery – New Venture

Hi, my name is Harry Trimblett. I have had an interest in wood since I was passed on a lathe from my great uncle when I was eleven years old and I have been woodturning ever since.

Since living in Whimble I have produced a wide range of wood turned products which I have sold in the Whimble Village Store thanks to Mark and Jen, The Heritage Centre with Sue, not forgetting I also supplied items at Cotley Farm for Helen during Christmas.

Since moving to Whimble I have pursued my career and got an apprenticeship at The National Trust on the Killerton Estate.

Then unfortunately COVID-19 arrived and this has changed everything. The National Trust have made a decision to make apprentices and other staff redundant so that they can survive through this tricky time.

At this point, I decided I have gained enough knowledge from working at The National Trust and attending Exeter College that I did not wish to work for another company.

I am now self employed and have chosen to setup my own company called Whimble Joinery.

I offer a wide range of carpentry/joinery services with the knowledge that I have gained over the past two years. Working for the Killerton Estates Team has given me the opportunity to work on restoration projects as well as a wide range of general repairs and maintenance throughout the South West.

I have made or repaired doors, gates, sheds, woodstores and windows. You can see examples of my work on my Facebook page @Whimble Joinery.

I am happy to consider all aspects of carpentry and joinery.





Whimble Joinery

Quality bespoke Carpentry and Joinery
Made from a variety of timber locally in Whimble

Harry Trimblett

Phone: 07564 357499



Facebook: @Whimble Joinery

Instagram: @Whimble Joinery



Email: whimblejoinery@outlook.com

Maths & Physics Online Tutoring

GCSE & A-Level

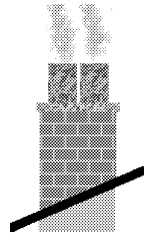
*Personal coaching to suit your needs,
with experienced mathematician.
Member of the Tutor's Association.*

Daytime/ Evening/ Saturdays.

For more information please see my website:
robertpooleymaths.co.uk

Robert Pooley 01404 822333
robertpooleymaths@gmail.com

Chimneys Wood Burners Fires



Swept, Installed, Repaired,
Lined and Built

"All your chimney needs"

Alf Butler

Tel: 01404 811843

A fully insured and HETAS
registered Company

Well who would have thought that we would have had a year without the showpiece event of the year, the Annual Flower and Craft Show. Being the oldest established event on the village calendar, it was very disappointing not to be able to stage this year's show, but, clearly with the way things have been, this was never going to be possible. So, we have moved on and are now looking forward to making next year's show a great success.

In the last edition of the News, I mentioned that we were to see if we would be able to hold the last three events that we had planned for this year. Unfortunately, we have decided that it would not be very practical to have the talk in October or the Quiz Night in November, so we have decided to cancel them both. We have also cancelled the proposed trip to Castle Drogo. Hopefully 2021 will bring us all better times and we will reschedule events for then.

We have seen that there have been some wonderful pictures posted online of various colourful displays in a large number of gardens in the village. So hopefully some of you will have been able to enjoy the fruits of your labours both floral and indeed edible!

Hopefully, our first meeting in the New Year will be our Annual General Meeting which is usually held in the Village Hall. We shall just have to wait and see if that will be possible.

Paul Wilson, Hon. Chairman.



👁️👁️ Note on Advertisements 👁️👁️

The advertisements that appear in this magazine relate to normal times.

We do not know for sure which services are available at the time of going to press, or how that will change over the days and weeks to come.

When you need to respond to an advertisement, we suggest that you either email or telephone the advertiser to find out whether or not they are open for business.

The News team.



Care, Compassion and Commitment

Dedicated farm and companion animal vets and nurses,
caring for your livestock and pets
24 hours a day

Cullompton
01884 35558
Tiverton
01884 258585
Honiton
01404 44095
Uffculme
01884 841317



www.valeveterinarygroup.co.uk



- ◆ **PORTRAITS**
- ◆ **BODY BEAUTIFUL**
- ◆ **WEDDINGS**
- ◆ **COMMERCIAL**

www.suedraycottphotography.co.uk

suedraycott@rocketmail.com

Home: 822969
Mobile: 07793 388012



Your local wireless security system experts

“LESS MESS LESS FUSS!”

- Serving the South West since 1997
- SSAIB registered installers
- Bespoke system surveys by engineers
- Installation, servicing and system upgrades
- Only the best quality products used
- A local, friendly service you can trust

“DON'T WAIT TILL IT'S TOO LATE!”

CALL US TODAY ON: 01392 487032
www.ellardsecurity.co.uk



WHIMPLE CHURCH

<http://churches4all.org/>

During September various members of the Mission Community took part in the Ride and Stride event in aid of Devon Historic Churches Trust. They raised a fantastic amount of money so a big thank you to all their sponsors and to everyone that took part for their mammoth efforts. Read on for an account of their journeys.

At 8am on Saturday 5th September Becky Venton, Bruce Truscott, Phil Dominy and myself met in the 24/7 prayer space at the church in Whimble ahead of our cycle ride around the 4 churches in our current Mission Community and the 4 churches in the Clyst Mission Community.

We were cycling in aid of the Devon Historic Churches Trust but also as part of the 24/7 prayer event. We wanted to thank God for the beauty of our area, to ask him to bless the businesses and communities that we cycled past, and to pray for the future of the Mission Communities. Our route was planned so that we would circle around the area, stopping to pray at each church but also at 'high points' such as Willow View Park and above Cotley Farm and at significant places like Clyst Vale Community College and at the bridges over the A30.

We saw beautiful old stained glass windows in church buildings which have, for centuries, been places of communal worship but in lockdown, although they were 'closed' for services became community 'foodbanks' and quiet spaces. We cycled down beautiful wooded valleys and up many hills and through productive farmland and past local pubs (We didn't stop at the 5 Bells...we might not have continued up the bigger hill after it!!). But our proposed Mission Community also includes commercial areas, home to big multinationals and many smaller independent enterprises which are all trying to cope with Covid restrictions and stay viable.

We really enjoyed cycling it together on a beautiful morning...Becky even sang for a bit! ...but for me it was a symbolic linking together in prayer of the proposed Mission Community - to ask for God's blessing over it.

I think I might do bits (or all) of it again. I could do it backwards but that involves a very long steep hill out of Clyst St Lawrence and I'm not sure I'd make it!! Of course, you could also walk it or I'm sure a 'prayer drive' would be acceptable so if anyone would like a copy of the route and the prayer points then please let me know!!

There are plenty of hills on the route so in the end we climbed 625 metres and cycled 32 miles (almost 54 km)..and, thanks to everyone who sponsored, we raised £661 for DHCT, which was fantastic!

Maggie Spicer 823640



Rochelles' Curtains, Blinds and Foam

Phil-kendall@hotmail.co.uk

07525 618286 (Phil)

**We come to you
for measuring, quoting and fitting**

Made to measure Curtains and Blinds
Wide selection of fabrics
Tracks and poles
Fitting service
Free measuring service
In-house making service
We also make with your own fabric
We make covers for foam cushions

FOAM cut to size for upholstery/caravans/boats etc.

Revive old furniture

Upholstery foam/Closed cell foam/Memory foam toppers

Polystyrene bead for bean bags

REVIVE HEALTH & WELLBEING

HOLISTIC MASSAGE TREATMENTS

REFLEXOLOGY

CRANIOSACRAL THERAPY

YOGA CLASSES

ESSENTIAL OIL & NATURAL LIVING
WORKSHOPS

Treatments and Classes in the safety of your own home. I am an experienced and well-qualified therapist and teacher, providing professional and personalised care.



CONTACT: Sarah 07591 599162

revivequernsey@gmail.com

For a consultation, information or an appointment
Visit Revive on Facebook for Offers & News

AERIAL SERVICES

(Mike Cummings)

- Same Day Service Available
- 7 Days A Week
- Sales, Service, Installation
- Repairs & Reception Problems
- Digital Aerial Upgrades



- NO CALL OUT CHARGE
- FREE ESTIMATES

01392 279513 07836 641635

www.aerial-services-mikecummings.co.uk



Woodlands
Teacher Led Childcare

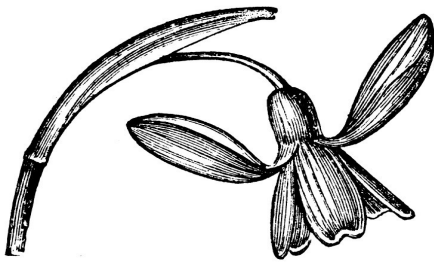


At Woodlands TLC, it is our mission to give your child the very best in "educare"

We provide excellent home-based early years education to a very small group of 1-5 year olds in Whimble, Exeter.

- Monday - Friday
- Term-time only
- No fees during holidays
- Teacher Led Childcare (TLC)
- Ofsted registered
- Paediatric First Aid

www.woodlands-tlc.co.uk



Jo White

GARDENING

PLANTING
MAINTENANCE
DESIGN

TEL: 07805 824197

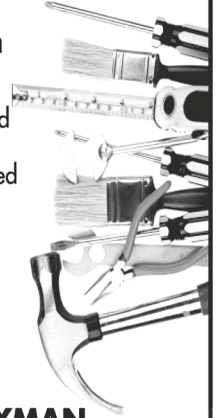
JOWHITEGARDENING@GMAIL.COM

Need a Handyman?

LOOK NO FURTHER - MARK'S A VERY HANDYMAN

No job too small - all types of DIY undertaken

- Domestic Plumbing
- FLAT PACK!! Furniture Build
- Garden Clearance
- Garden Equipment Repaired and Serviced
- Kitchen Units Built / Fitted
- Laminate Floors Laid
- Painting and Decorating
- Patio Cleaning
- Tiling
- Wallpaper Hanging



M R HANDYMAN

Call for a free quote -

01404 813123 - Mobile 074361 10727

Mark Rix 17 Ridgeway, Ottery St Mary EX11 1DT
e-mail: markrix@talktalk.net

Lamb Hill Garden Machinery

• Sales • Repairs



• Servicing

Andrew has over 20 years experience in the garden machinery industry. Previously at Otter Nurseries & more recently at P.J.Flegg.

FOR ALL YOUR GARDEN MACHINERY NEEDS

CALL ANDREW TODAY

01404 823100/07773 579072

Moorview Industrial Estate Straightway
Head Whimble Devon. EX5 2QT
Email: lambhillgardenmachinery@hotmail.co.uk



Whimple Cricket Club

"London, June 24: UK Prime Minister Boris Johnson has described the cricket ball as a 'natural vector of disease' and has ruled out recreational cricket's return in the country."

Things seemed a little bleak when this news broke and there was little prospect of any cricket. The so-called problems with the ball were quickly replaced with the issue of serving teas, as if the game could not possibly be played without tucking into a plate of scones halfway through the day. Barely 2 weeks later, the ECB announced conditions under which cricket could commence. This kicked off a whirlwind of risk assessment work, pavilion preparation, fixture planning and the purchase of a lot of hand sanitizer.

I am absolutely delighted that we have had our two competitive sides play in a revised Saturday mini-league, Sunday friendly fixtures on almost every weekend, provided junior coaching and competed in junior age level fixtures. There have been some great games and really good days at the club in a year where there could easily have been nothing; the thrilling T20 win against Ottery St Mary on what would normally have been the date of the Whiteways Cup was a particular highlight for those who were there!

Current circumstances do not allow us to hold the usual end of season celebrations, presentations and opportunity to thank our volunteers. There are many unsung heroes who make everything work at the club. From the ground and wicket preparation to the selection and organisation of the teams, junior coaching and fixtures, running the bar, scoring, umpiring, being part of our committee and more. My thanks go to everyone who have contributed to making this unusual season possible.

Unfortunately, we haven't been helped by our tractor suffering a terminal breakdown. We are grateful to Francis and Margaret Bucknell for the loan of a machine to keep the outfield mown and are now having to solve the problem longer-term. This may well mean a fundraising drive through the winter and if I could urge anyone who benefits from the club as a player, spectator or dog-walker to support our efforts it would be much appreciated. This brings me to the Bonfire and Fireworks night. At the time of writing, we have not yet cancelled and are in discussions as to the options to hold this in a COVID secure way. More information on that to come, but the date would still be Saturday 7th November if anything can go ahead.

As ever, please feel free to contact me with any questions about the club. Winter updates will be brief but I look forward to writing the preview of what I hope will be a full summer of cricket in 2021.

James Woollam
Chairman

GEOFF DELVES ROOFING

**YOUR FRIENDLY, LOCAL ROOFER,
WITH OVER 30 YEARS IN THE TRADE**

**PLEASE CALL ME IF YOU WOULD LIKE
A QUOTE FOR ANYTHING FROM
REPAIRS, FLAT ROOFING AND
TILE REPLACEMENTS, TO A FULL ROOF
INSTALLATION OR SLATE WALL
CLADDING.**

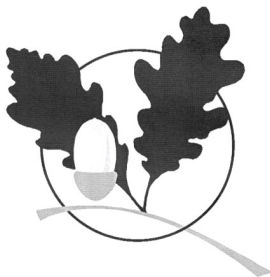
07939 879305

01404 823258

(WHIMPLE)

Oak Building Services

Quality works at competitive rates



renovations
extensions
patios & fencing
decoration
bathrooms
kitchens
roofing
carpentry
maintenance

References for all past projects available

Contact Trevor Oakaby

at Brickyard Cottage, Whimpe EX5 2PP
on 01404 822655 evenings & weekends

**TRY OUR
PAYMENT PLAN**

3, 6, 9 or 12 months

THE EASY WAY

TO PAY

RIDGE ROOFING



MEMBER OF THE FEDERATION
OF SMALL BUSINESSES

AT THE TOP

Guaranteed
to beat any
genuine
produced
quote

**FOR BOTH
QUALITY
& PRICE**



& SCAFFOLDING SERVICES LTD

ALL ASPECTS OF ROOFING UNDERTAKEN - FROM LEAKY ROOFS TO RE-ROOFS

Ridge Roofing Ltd is a well-established company with over 25 years' experience behind them, working in partnership with most of the leading estate agencies.

- Slating • Tiling • Flat roofing • Fibreglass flat roofs • Chimneys/Leadwork • Turnerized slate roofs • Guttering/uPVC/fascia boards
- Storm damage/insurance work • All grant work undertaken
- Insurance backed guarantees • Full public liability insurance
- Free written quotations • All work guaranteed



T: 01404 891813 M: 07789 555685 • stephen.wattsrr@gmail.com • www.ridge-roofing.com



Looking after your trees and
gardens for over 25 years

Sid Valley Tree Surgery & Landscapes

TREE SURGERY
HEDGE CUTTING
STUMP GRINDING
GARDEN CLEARANCE
FULL LANDSCAPE SERVICE
FREE QUOTATIONS



Tel: **01395 519856**

Mobile: **07880 797613**

www.sidvalleytreesurgery.co.uk



James Brewer Quality Made Joinery



Ellicombe House
Cutteridge Lane
Whitestone, Exeter EX4 2HE
Tel: 07896 530640
Fax: 01392 811604

Email: jbrewer2410@hotmail.co.uk

(not VAT registered)

*Please contact me for all
your carpentry and joinery
needs, i.e. doors, windows
and furniture, I will be
pleased to give you a
quotation.*

darren peek plastering contractor

plastering and rendering,
dry-lining, coving,
cob and lime specialist,
floor-screeds,
damp-proofing.

mobile 07786514172

tel 01404 41211

darrenpeek2@aol.com



It has been lovely to welcome back all of our children again after all these months. The children have been amazing, particularly our new reception children who have entered the playground in the morning with beaming smiles on their faces and confidently leaving their parents. The colourful bunting provided by one of our parents also helped the return of the children.



Both our morning (8.45-9am) and end of school (3.20- 3.40pm) routines are working well with many of our older children enjoying their new responsibility of meeting their parent a short distance away from the site. This is helping to reduce congestion at the gate although I appreciate this is limited due to the width and lack of pavements.

During the summer holiday we had a number of building projects planned. A number of windows were due to be replaced in the main building and double mobiles. After a recent survey County also decided to replace the cladding on the double mobile. Some works have taken place on the exterior walls but this is not yet complete due to problems sourcing cladding. Also, the windows are yet to materialise! However, the roof to the main building was repaired and re-leaded to help prevent any further leaks and most of the lighting has been replaced in the main building and Oak Class.

Over at our MUGA and orchard area, a very kind parent, Daniel Williams, has helped to clear it after it became very overgrown due to lack of use. The hedges have also been cut recently too. Children have already started to use the area for PE and Forest School.

I would like to take this opportunity to publically thank all the staff and governors involved at Whimple Primary School – over the past six months they have worked flexibly and tirelessly to ensure the best for the children in our care. I know this term will continue to bring many new challenges, however, I am sure that together we will manage them to the best of our ability.

Take care and look after yourselves.

Mrs Carole Shilston

Children's View of the Return to School

Before returning, we felt quite nervous about coming back to school because we knew it would be different. Many things have changed. For example: whenever entering the school, we wash or sanitize our hands, and we have staggered lunch and break times. We stay in our separate class bubbles and eat in our classroom.

It is good for our social life to see our friends again and it is fun to participate in activities that we wouldn't have the chance to do at home. Things are organised differently, such as our changing strategies for P.E. and Forest School which have been re-established. Also, the books in the library have to be quarantined for 72 hours after we have enjoyed them.

As the computer room is currently non-accessible to pupils, the school has purchased some brand new, intelligent ChromeBooks.

The outlook of the new routine of the school day is that it is different, most of the time in good ways, but however, there are slight drawbacks. The fact that we can't interact with other classes means that we cannot see all of our friends at one time. Nevertheless it is good to be back in school and we are enjoying it very much.

By Arlo Sweet and Sofia Lenzi (Year 6)



Your Personal Assistants

A niche group of personal assistants set up to provide top quality care and support.

Mobile: Poppy - 07786392480

Email: saskialayburn@poppycare.org

Billy Bloomfield Whimble Handyman

Window Cleaning, Lawn Cutting, Strimming, Hedge Cutting, Garden Clearance, Shed Erecting, Fence Erecting, Erection of Wooden Lean To, Fence Staining, Patio Laying, Patio Cleaning, Decking Cleaning, Decking Assembly, Jet Wash Driveways and Paths, Painting (Inside & Out), Gutter Cleaning, Gutter Renewal, Facias and Roof Repairs (10 Years Roofing Experience)



Home: 01404 822345
Mobile: 07759 466671

PEK BUILD

BRICKWORK&MASONRY

New build-extend-refurbishment-renovate
alteration-barns-hard landscape-repairs
Your friendly, reliable local tradesman

No job too small.

Telephone Mark on

**822913 or
07817097721**

Email – mproberts@live.co.uk

3 The Signals
Talatun Road
Whimble
Exeter
EX5 2QL



City and Guilds
Qualified

J S Painting and Decorating

**High Quality Decoration
and Protection**

For a free quotation call Jan on

**07588523676
01404821953**



PETER SALTER A.I.R.T.E.

MOBILE MOTOR ENGINEER

(Member Institute of Road Transport Engineers)

Servicing & M.O.T. Preparation

Engine Overhauls & Bodywork Welding

Cars & Commercial Vehicles

Telephone: Whimble (01404) 823054



**Andy
Brooker
Monumental Mason**

**Whimble based
Traditional
Memorials**

Handcut Lettering

**01297 33290
07931 32291**

Pilates Classes



Improves core stability and flexibility

Classes suitable for all ages
and all abilities

Held on Mondays at 1:30pm and
Wednesdays at 8.00pm
at the Scout Hut in Whimble

£5 pay as you go or 12 lessons for £54

Contact **Julie Wallace - Edmonds**

Mobile: **07956 137493**

Facebook: **Julie Wallace Edmonds**

Grandisson

FIRES, FIREPLACES,



STOVES



& DECORATIVE PLASTER

FREE ADVICE AND SURVEYS
EXPERT AND QUALIFIED FITTING BY OUR OWN FULLY SKILLED TRADESMEN
VISIT OUR LARGE SHOWROOMS

GRANDISSON, 26-28 FINNIMORE IND. EST, OTTERY ST MARY, EX11 1NR
TEL: 01404 812876

Antony Taverner Oil Fired Plumbing & Heating

Oil fired boiler service and repairs
Oil fired Aga and Rayburn service & repair
New Oil and Gas boiler installations
New Oil tank installations
Full heating installations
Full bathroom installations
All aspects of plumbing carried out
Un-vented Cylinders serviced and installed
18 years experience
Fully insured
Oftec and Gas Safe Registered



Hamelin
Winter's Lane
Ottery St Mary
EX11 1BG

Phone : 01404 814582
Mobile : 07834903343
E-mail : antonytav@gmail.com



Organisations in Whimble

Devon County Councillor (iain.chubb@devon.gov.uk)	
Iain Chubb	07932 459595, 01297 35468
East Devon Councillor (kmclauchlan@eastdevon.gov.uk)	
Kathy Mclauchlan	07811 138177
Parish Council (whimpleparishcouncil@gmail.com)	
<i>Chairman:</i> John Griffiths	823480
<i>Clerk:</i> Kevin Finch	823385
Primary School (admin@whimple-primary.devon.sch.uk)	
<i>Headteacher:</i> Carole Shilston	822584
<i>Chair of Governors:</i> Linden Best	822595
Friends of Whimble School (FOWS) (whimplefows@gmail.com)	
<i>Chairperson:</i> Carle Whitaker	07976062725
St. Mary's Church	
<i>Parish Priest:</i>	
<i>Impact Cell:</i> Helen Bowker	823193
Book Group	
Tanya Mooney	823326
Cricket Club (jameswoollam@gmail.com)	
<i>Booking Secretary:</i> James Woollam	07989 234372
Football Club	
<i>Chairman:</i> Victoria Kendrew	07966 550260
<i>Secretary:</i> Lee Wheaton	077341 52120
Front Row Club	
<i>email:</i> frontrowclub@gmail.com	
History Society	
<i>Chairman:</i> David Rastall	822486
<i>Secretary:</i> Roger Smith	822244
Mothers Union	
Margaret Burrough	822257
Over Sixties Club	
<i>Chairman:</i> Arthur Iball	822905
<i>Secretary:</i> Beryl Iball	822905
Pre-School & Toddler Group (www.whimplepreschool.com)	
<i>Chair:</i> Joe Pearce	823512
<i>Information:</i> Jo Sibley 07794 652549 or admin@whimplepreschool.com	
Recreation Trust	
<i>Knowle Cross Sports Ground:</i> Roger Smith	822244
Scout Group	
<i>Group Scout Leader (and Marquee Booking):</i> Alex Spry	822844
St. Mary's Bellringers	
<i>Captain:</i> Roger Algate	822480
Table Tennis Club	
Chris Beer	07787 544192
Tennis Club	
<i>Secretary:</i> Viv Brown	07876 653264
<i>Treasurer:</i> Marianne Randall	822025
Victory Hall	
<i>Chair:</i> Maria Wallis	823992
<i>Secretary:</i> Di Wilkins	758459
<i>Booking Sec:</i> Ali Tierney	822724
Village Produce Association	
<i>Chairman:</i> Paul Wilson	822744
Whimbletons	
Cathy Bartlett-Horwood	823944
Womens Institute	
<i>President:</i> Di Eden	821992
Whimble and Broadclyst Young Farmers:	
<i>Vice Chair:</i> John Down	07580 938109

The Whimpe News Team

Editor

Ed Hitchcock 823194

Production

Bob Scanlan 822262
bob.scanlan@eclipse.co.uk

Sally Wilde 823246

Advertising and Community Diary

Ed Hitchcock 823194
edhitch@btinternet.com

Delivery

Cathy Sharkey 822939

Treasurer

Miles Leonard 822415



**NATURAL TREATMENTS
LOG CABIN IN WEST HILL
07866 528567**

15%OFF ANY TREATMENT WITH THIS ADVERT

SPECIAL OFFERS ARE AVAILABLE EACH MONTH

**A FULL RANGE OF BEAUTY AND HOLISTIC
TREATMENTS ARE AVAILABLE**

PLEASE TEXT OR PHONE FOR A TREATMENT LIST



Living and Selling Locally

We offer straight forward, straight talking professional advice with over 30 years of local knowledge.

If you are considering selling or letting your property and would like some expert advice on the current market conditions, please give one of our offices a call today for a free up-to-date market appraisal.

Call for a free valuation today.

hallandscott.co.uk

Ottery St Mary
15 Broad Street
Ottery St Mary
Devon EX11 1BY
ottery@hallandscott.co.uk
01404 812000

West Hill
Potters Country Market
West Hill
Devon EX11 1TY
westhill@hallandscott.co.uk
01404 811839

Sidmouth
113 High Street
Sidmouth
Devon EX10 8LB
sidmouth@hallandscott.co.uk
01395 578791

London
121 Park Lane
Mayfair
London W1K 7A
london@hallandscott.co.uk
020 76294141



rightmove 

 nTheMarket.com

the Jack *in the* Green

**WELCOME BACK....
OUR DOORS ARE NOW OPEN!**

We are offering full table service inside
the restaurant (with a maximum of 2
households allowed per table)
& also throughout the courtyard.

Our Covid-19 Risk Assessment, specific
safety procedures & new menus can be
viewed on our website.

It's great to be back & we
can't wait to feed you again.

Never waste a good appetite!

Paul, Judy & the team

www.jackinthegreen.uk.com

Tel: 01404 822240