



## *New Fountain Inn*

*Whimble, Devon.*

*Tel: 01404 822350*

As recommended by  
Camra, the Good Pub Guide and the Good Beer Guide.

Real Ales

Home Cooking

Lunchtime & Evening Meals  
7 Days a Week

Sunday Roasts etc - Vegetarian Choices

Handmade Desserts

Children's Menu & Toddler Portions

Special Menus available for Large Parties

Lounge, Bar & Beer Garden

Join us for a Friendly Drink,  
Bar Snack or A La Carte Meal

Bookings are advisable  
Especially at Week-ends

A Traditional Olde Freehouse Village Inn

# **Whimble News**



**Sept/Oct 1999**

## St.Mary's Church

### Monthly Programme of Services

1st Sunday	8.00am	Holy Communion
	11.00am	Family Service
2nd Sunday	11.00am	Parish Communion
3rd Sunday	8.00am	Holy Communion
	10.00am	Service with a Smile
4th Sunday	11.00am	Parish Communion
5th Sunday	8.00am	Holy Communion
	or	Joint Benefice Communion
Last Sunday	7.00pm	Informal Evening Service

#### Mobile Library

	Arrive	Depart	Frequ-
<u>ency</u>			
Chard Avenue	10.10	10.30	Every
Friday			
Dince Hill Close	9.45	10.05	Fortnightly
West View Close	9.45	10.05	Fortnightly
Willow View Caravan Park	11.45	11.55	Fortnightly

### The Whimble News Team

Peter Smith 822828

Production  
 Bob Scanlan 822262  
 Vicky Stewart 823374  
 Vivienne Leonard 822415

Delivery  
 Nicky Hitchcock 823194  
 Sue Wilson 822641

Advertising  
 Miles Leonard 822415  
 Jill Wilson 823339

Community diary  
 Sue Wilson 822641

Organisation reports  
 Judith Kemp 823043  
 Adrienne Hughes 823043

Treasurer  
 Miles Leonard 822415

Kathy MacLaughlin 822096  
 Ed Hitchcock 823194

Alec and Christine Janaway

Tel/Fax: 01404 823019

Email: BandBbusyB@AOL.COM



**BED & BREAKFAST**

**B** *A warm welcome awaits at*  
"Mellifera" Church Road  
WHIMPLE Exeter  
East Devon EX5 2TF

**B** *Private Car Parking*  
*En-suite Rooms*  
*Day Room for Guests*  
*Excellent Facilities*

## "Floral Enchantme-

Designer:

Morven Fletcher

Flowers for all occasions

Floral designs to your  
specification

Bodley Bridge Cottage  
London Road,  
Whimble (on old A30)

Tel: 01404

## WINDOW CLEANER

also

**PAINTING & DECORATING**

\*\*\*\*\*

**PATIO STEAM CLEANING**

\*\*\*\*\*

**GENERAL HANDYMAN**

**GARDEN MAINTENANCE**

(Excellent references if required)

*For that personal service*

Phone: Mr. Evans

on 01404 822120



## Brush up your maths

with

**Home Tuition by**

**Dianne Goodwin**

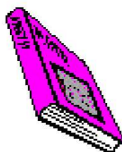
**GCSE - A Level**

Bamfylde House

The Green

Whimble

Tel: 01404 823476



## From the editor

The News team very much appreciated all the encouragement following their first issue. We are pleased to be able to serve Whimble residents by keeping them informed about what's going on in the village. Please keep the articles coming in, let us know what you think and tell us how Whimble News can improve.

This issue includes lots of different news and views including an item from the Parish Council which we plan as a regular feature. We intend to experiment with a "What's on in Whimble" page.

Those of you who have lived in Whimble for a long time will have seen a lot of change in the village - including the arrival of many new people living in new houses. The new A30 is probably a blessing to most but not all. Many residents will have strong views about new development and it's important that we listen to each other. Do let us have your views for inclusion in a future issue. It would help if letters are kept fairly short - we will try to include as much as possible.

Items for the next issue should be left at the Post Office by October 18th. We aim to deliver our next issue during the first week of November.

**Peter Smith**

## From the Chairman Whimble Parish Council



Dear Fellow Residents

Now the new Council has been formed, I would like to express my thanks to the five members who stood down in May. They were all dedicated and hard working over the years. William Trump, Richard Webber, Gerald Bond, John Fry and particularly Herbert Breyley for his stewardship as Chairman. I will miss their presence at meetings and wish them well in the future. The village has benefited from their public service.

The opening of the new A30 has made a difference to us all. For the majority it is a great improvement making access much easier. It has also helped reduce the traffic in the lanes passing around the village. Sadly for those living near the new A30 the increased noise has destroyed the peace and quiet of the countryside.

The village has looked very pretty recently with the floral displays in the gardens and hanging baskets. Well done to all involved.

If you want to know when the meetings are being held or other information on the Council, have a look at our notice board in the Square.

Yours sincerely

Sara Randall Johnson  
Chairman of the Parish Council

## Summer Club

Over 50 "Special Agents" aged between 4 and 11 attended the summer club held in the Victory Hall from August 18 - 21. Led by "Phil Bond", armed with his water pistol and licensed to squirt, children and helpers got stuck into a programme of games and different craft activities each day.

The puppets were very popular and their funky singing routines proved very amusing to children and adults alike. Some of the older children got a chance to learn basic puppetry skills and presented their own sketch on the last day.

The summer club finished at Saturday lunchtime but the fun continued on Sunday at the Church for a packed out Service with a Smile followed by a barbeque for children, parents and everyone else involved.

We were very pleased to receive grants from the East Devon District Council and from Whimble Church. Grateful thanks also to all the volunteer helpers, the Mothers Union for providing refreshments and to Lester and Helen for organising the barbeque.

**Sue Wilson.**





## Day and Evening Classes Clyst Vale Community College



By now you should have received your copy of Clyst Vale's Activities and Opportunities brochure giving details of all day and evening classes your local College is offering this term (if not, there should be extra copies in the Post Office).

Last year over 2,000 people - ages ranged from 6 weeks (children in the crèche at the Family Crafts) to 82 years - participated in day and evening classes. These varied from Aromatherapy to Woodcarving, with a vast range of courses in between. So, as the evenings start to draw in, take a look at what there is on offer. Now is the time to learn a new craft, skill or language - join a class/group this year. You can be assured of a warm and friendly welcome.

We are only 4 miles from Whimble, with easy, well-lit parking and with the vast majority of our classes accessible for wheelchair users.

If you would like further details, or have suggestions or ideas for courses you would like to see available, contact Lynne Jackson on 01392 466643, or you can call in to see us in the office - just off the main reception area.

## Royal British Legion Whimble Branch (Women's Section)

At our July Meeting we received a certificate from the Royal British Legion Headquarters in recognition of 50 years continuous good work for the Royal British Legion Women's Section.

Our Royal British Legion Jumble Sale, Cake & Produce Stall and Draw will be held in the Victory hall, Whimble on Saturday, October 23<sup>rd</sup> 1999

Frances M. Pratt Chairman/Secretary


The Women's Section of The Royal British Legion was formed in 1921, its task was to safeguard the interests of the widows and families of ex-servicemen and women and to augment and widen the activities of the Legion. It has always worked wholeheartedly to improve the lives of the disabled and people in need of care.



The Women's Section is an integral part of The Royal British Legion and raises the money to carry out its Benevolent work by individual efforts of the members in their branches.


It's benevolence work covers Welfare Grants, Rest and Convalescence, Widows Allowance and Flatlets. Children too are not forgotten. Help can be given to assist children of serving and ex-service personnel with clothing, school requirements, sail training and other development courses. New members are always welcome.






Thanks to Penny and Peter who have made what was a drab and neglected corner of the village into a most attractive flower display which brightens up the turning from the railway bridge into Grove Road - a great tribute to their gardening skills. Well done

F.M.P.



Domestic rubbish such as old washing machines and garden waste is being dumped at sites within the village. The culprits should know better and make proper use of the facilities provided by the Council for disposing of this waste - and stop spoiling parts of our village.



I considered it a great honour to be asked to officially open the new Whimple Surgery and to have it named "Sandfords Surgery" after my home where the Doctors' Surgery has been held for 39 years.

Also a big 'Thank You' to all who contributed to the garden seat which is situated at the entrance to the surgery.  
Frances M. Pratt

## COMMUNITY LINK

Sat 30th. October  
**QUIZ NIGHT**

at the Cricket Club at 7.30 p.m.

£1 per person in teams of 4 to 6

or come on the night

and form a team with others.

Licensed bar, light refreshments available.

In aid of the Millennium Fund



### OVER 65'S PARTY TIME

The over 65s Christmas Party

is due to be held on

Friday December 3 in the Victory Hall.

More details in the next issue.

---

Any items to be offered for sale or wanted,  
please ring Sue on 822641

## THE BIG NIGHT IN !

### THE EVENTS

You may have read in the last Whimble News that **THE BIG NIGHT IN !** is starting here in Whimble in the autumn and winter. We now have confirmation of all four events. We hope you will find something that takes your fancy.

#### **MAKE A PUPPET SHOW IN A DAY** with *Far and Wide Puppets*

A wonderful day for 4-11 year olds and their families. Come and have loads of fun making a puppet show. You'll decide on a theme, devise a story, make the puppets and perform the show for family and friends at the end of the day.

**Monday 25th October 10.30am - 5pm at the Victory Hall, Whimble**

*Tickets £5 (£3.50 concessions)*

#### **SARVEENA**

Flautist Briggite Norland and harpist Emma Graham are both busy Orchestral players, coming together as Sarveena to present a wide ranging repertoire that takes in music from the great classical period up to the late 20th century. They present an evening of music that will both satisfy and stimulate musical ears with skill and charm. (For anyone who has seen them before - this concert is a new repertoire)

**Saturday 27th November at 7.30pm at St Mary's Church, Whimble**

*Tickets:£3.50 adult, £2.50 concession, £2.00 child, £9.00 family (2 adults and 2 children)*

#### **LIFE IN THE FREEZER** by *Ben Osborne*

A spectacular audio-visual journey to Antarctica, the coldest region on earth, and the story of how the award winning BBC series was made. The show starts with a dramatic audio-visual sequence which simulates the journey across the Antarctic Ocean, visiting the sub-Antarctic Island of South Georgia and its wildlife. The second half focuses on the Antarctic continent with spectacular images of its wildlife and scenery. Ben Osborne was the official stills photographer on Sir David Attenborough's 'Life in the Freezer' team and took most of the photographs in the book of the TV series.

The Arts and Crafts Section was full of some very colourful and skilfully made exhibits. The most successful competitor in this section was Mrs Rachel Owen with Tom Lambert taking the prize for the best exhibit. The entries in the photography classes were amazing and, with 130 exhibits, accounted for nearly 25% of the total entries for the show. The judge commented on the very high standard of exhibits in these classes. The winner of the trophy in this section was Mrs Gilly Curtis.

There was nearly a clean sweep in the children's classes by the Bowker family with Anna, Jenny and Samuel winning three of the four trophies. Unfortunately, although entries were received in all the classes, the exhibits in the 12 to 15 years section did not appear on the day. There is always an air of anticipation as to what imaginative ideas the children will come up with, and this year was no exception. It was a pity that the number of exhibits in these classes was not as high as in previous years - perhaps next year will see a change. A full list of all the trophy winners is included earlier in this report.

We were very much indebted to John Shepherd who spent most of the winter and spring writing a new computer program to make the running of the show much easier, particularly with the handling of the entries. It certainly helped a great deal to make this year's show run so smoothly. We are also very grateful to the hard work of the show secretary, Frances Pratt, who even in the two weeks up to the show, had to find replacement judges, to whom we are very grateful. We would also like to give our thanks to all those people who gave up their time to help us set up the show and to clear the hall afterwards, it is much appreciated.

We have received a number of comments regarding the show which, in due course, we will consider. However, if there is anything anyone wishes us to consider we will gladly do so. Please let us know as soon as possible.

Finally a word of thanks to all of you who took the trouble to enter the show, for without you, there would be no show. Let's hope next year's show is one to remember. For those of you who want to start planning early, the date will be Saturday 12<sup>th</sup> August 2000!



Paul Wilson, Hon. Secretary.

The second Saturday in August can only mean one thing, it is time for the Whimble Flower Show! Once again the Village Hall was filled with the creative talents of the residents of the village. Although the number of exhibitors was slightly down on last year (61), the number of exhibits (560) was higher. Hopefully more people will take up the challenge next year so that the first show of the next millennium will be a bumper one.

The Flower and Vegetable classes were well supported with a good display of "local" produce. It was good to see such excellent entries, none more so than in the tomato classes, particularly the small variety. There was a very close battle for the top honours in this section with many different individual winners. However, Jim Stevens won the Whimble Folk Cup by one point from Irene Carter who won the Win and Bob Shepherd Cup. Jim Stevens also collected the Slewton Cup with Mrs Anne Hardcastle taking The President's Cup. The Pot Plant Section was dominated by Roy Branston whose magnificent exhibits won him the Briar Shield.

There was much support for the classes in the Homecraft Section, with cakes galore! With twelve victoria sponges, ten fruit cakes, nine easy bran loaves and six ginger cakes, the judges had their work cut out in these classes. For the second time in recent years Fred Finch demonstrated that culinary skills are not exclusive to the good ladies of the village. Not only did his fruit cake take first prize but his chutney did as well! However, the overall winner in this section was Mrs Marian Turner who won the Sir Henry Imbert-Terry Cup. Her skills were also evident in the wine and beer classes where she also collected the Cranny Brook Cup.

Near record entries in the flower arranging classes were once again the highlight of the show. It was a pity that any one entry had to be judged the winner as all the exhibits were outstanding. Mrs Rosemary Horrell was the overall winner in this section with some magnificent displays and she also won the Marie Louise Grout Cup for the best exhibit. Dr Andrew Ward won the cup for the most successful competitor who had not previously won a trophy in this section.

**Saturday 5th February at 7.30pm at the Victory Hall, Whimble**

*Tickets: £3.50 adult, £2.50 concession, £2.00 child, £9.00 family (2 adults and 2 children)*

**TZIGANARAMA**

Wild and beautiful music on fiddle, accordion and double bass. Chris Haigh (violin), Alan Dunn (accordion) and Bernard O'Neill (double bass) have played and recorded with Alison Moyet, Richard Thompson, All About Eve, Rolf Harris and a host of other leading figures in folk, jazz, rock and Cajun music. They present an exciting and wide ranging set to take audiences through the rich and varied cultures of Eastern Europe from the gypsy campfires of Hungary to the cafes of Prague.

**Sunday 5th March at 7.30pm at Whimble Cricket Club**

*Tickets: £3.50 adult, £2.50 concession, £2.00 child, £9.00 family (2 adults and 2 children)*

**THE BIG NIGHT IN!** is a rural touring programme run as a partnership between East Devon District Council, Exeter Phoenix and a network of local promoters. It is a member of the National Rural Touring Forum which represents over thirty schemes across the country.

If you would like any further information contact Louise Barchard on 01404 822008  
Tickets will be available from Whimble Post Office from mid-September.  
Please book early to avoid disappointment..

\*\*\*\*\*

**FIRST EVENT - 25TH OCTOBER - PUPPET SHOW DAY**

\*\*\*\*\*

# FROM MY WINDOW IN THE SQUARE

by Edith Grout

Once upon a time ..... seems like the start of a fairy tale, but it seems to me that not so many years ago a village was the natural focus of country life. After all the many years I have lived in the Old Manse, I still delight in seeing the world go by - even though the winds of change are so very strong for me, the Square is like a stage which Shakespeare described so well in "As You Like It":

"All the world's a stage,  
And all the men and women are merely players;  
They have their exits and their entrances;  
And one man in his time plays many parts,  
His acts being seven ages.

At first the infant. It is so refreshing and touching to see young parents carrying their baby so lovingly as they walk across the Square and make for St. Mary's church to have their child christened. It is an occasion for joyful celebration.

Then the schoolboy with his satchel comes to the Square every weekday to catch the bus in the morning, then in the afternoon jumps out eagerly to come home and see the family.

Then comes the bridegroom and his bride announced by a joyous peal of wedding bells from the church tower. What a happy gathering of family and friends. What elegant dresses and pretty hats. A real day for the ladies in their finery. On those occasions the men look slightly embarrassed, they do not like to dress up but do



## WHIMPLE FLOWER SHOW 1999 CUP WINNERS

<u>Section 1 Flowers and Vegetables:</u>	<u>WINNER</u>
The Whimple Folk Cup	Mr Jim Stevens
The Win and Bob Shepherd Cup	Mrs Irene Carter
The Slewton Cup	Mr Jim Stevens
The President's Cup	Mrs Anne Hardcastle
<u>Section 2 Pot Plants:</u>	
The Briar Trophy	Mr Roy Branston
<u>Section 3 Homecraft:</u>	
The Sir Henry Imbert - Terry Cup	Mrs Marian Turner
<u>Section 4 Beer and Wine:</u>	
The Cranny Brook Cup	Mrs Marian Turner
<u>Section 5 Floral Arrangement:</u>	
The Sandfords Cup	Mrs Rosemary Horrell
The Marie Louise Grout Cup	Mrs Rosemary Horrell
The Roy Horsburgh trophy	Dr. Andrew Ward
<u>Section 6 Arts and Crafts:</u>	
The Len Rose Memorial Cup	Mrs Rachel Owen
The Whimple Craft Cup	Mr Tom Lambert
<u>Section 7 Photography:</u>	
The Paul Henry G.C. Memorial Cup	Mrs Gilly Curtis
<u>Section 8 Junior Classes Children Under 5 Years</u>	
The Cygnets Cup	Miss Anna Bowker
<u>Section 9 Junior Classes Children 5 to 7 Years</u>	
The Basildon Award	Miss Jenny Bowker
<u>Section 10 Junior Classes Children under 8 to 11 Years:</u>	
The Fletcher Cup	Master Samuel Bowker
<u>Section 11 Junior Classes Children 12 to 15 Years</u>	

## The Millenium

The Millennium commemorates 2000 years since the birth of Jesus Christ and Whimple Church will be celebrating the event by distributing Millennium Candles to every household just before Christmas together with a commemorative Whimple medallion as a keepsake. Additional supplies are being ordered which will be available for purchase if extra ones are needed for family members.

We are suggesting that everyone who wants to might gather in the Square just before midnight so that the Millennium moment can be celebrated as a community. On the following day, Saturday January 1st, in common with churches throughout the country there will be a short inter-denominational service at noon preceded by a peal of bells. After the service we will be serving soup and a roll for anyone who needs only a light lunch after the excesses of the previous evening!

We also plan to erect a 'Millennium Stone' with an inscription of the Millennium Resolution as a permanent record of the event.

Prior to all of this there will be the joint History Society and Church presentation of 'The Old Parish Chest' in the church from 13th.October.

This is a sound and light dramatisation of the history of Whimple and its church. The demand for tickets when this was first staged in 1996 was so great that this new version will run for 4 nights. Watch out for posters and information in the church magazine for details.

it for the young couple's sake. All get together in little groups and there is much laughter. Photos are taken by official photographers and friends alike, everyone wants a memento of this happy event. Spring and summer seem to be the most favoured season for nuptials. It is such a pity, however, that in these modern times, so many weddings are now taking place in locations other than churches; we do not witness as many weddings in the Square as in the past.

Then alas comes the day when villagers pay their last respects to a loved one and for this occasion the church still seems to be a favoured choice. Flowers are delivered to the funeral parlour, the vivid blooms brighten up this solemn occasion.

Quite recently, we had a service for a well-known and well-liked member of the farming community - Bunny Rowland. It was quite obvious from the great gathering of family and friends assembled in the Square ready to go to church, that Bunny was very respected and loved and so is her family.

It was a very moving and simple service of thanksgiving for a life full of kindness and countless gifts of love for others in the best West Country farming tradition. It brought back many happy memories to all of us and me in particular, because thanks to my beloved airedale Mister Blaze, it was a walker's delight to meet and come to love people like Bunny Rowland and her family. We were so united in our love for country life and the true country value of respect for others.

It is such a pity that our farming community is dwindling fast, but I suppose there is an eternal destiny for all of us.



# Cricket Club

Dear Editor,

An article headed RETIREMENTS in the last issue of Whimble News might have given the impression that only two people had served our community over the years.

Whilst I applaud and endorse the congratulations and best wishes issued to Mrs. Jean Hadley (8 years service) and Mr. Herbert Breyley (12 years service) I feel I should put the record straight and mention the other stalwarts who have retired from the Parish Council.

WILLIAM TRUMP not only served on the Parish Council for 25 years but was also a member of East Devon District Council for 6 years, Governor of East Devon College of Further Education for 25 years and a Governor of both Whimble School and Clyst Vale Community College.

GERALD BOND served for 16 years and was very conscientious. He often arrived at meetings in his greasy overalls having just returned from long hours of HGV driving to attend, frequently before having an evening meal.

JOHN FRY put in 8 years service and was a very able representative from the Victory Hall Committee.

I am sure I speak for many parishioners of Whimble when I wish William, John and Gerald a very happy future free of the harassment of civic duties and offer them many thanks for all the good work they have done on behalf of the community.

**Richard Webber.**

The Cricket Club have premises that are available for hire, and provide an ideal venue for functions receptions and the like. For anyone considering using these facilities - the hire charges are as follows:

1. Hire of Lounge and Kitchen £20.00
2. Hire of Lounge, Kitchen and Bar (with staff)\* £40.00
3. Hire of Ground for Cricket and Kitchen\* £30.00
4. Hire of Ground for Cricket, Kitchen and Bar\* £50.00

\*provision of food is a separate issue and is not included in the above hire charges. All hiring is subject to approval by the Club Committee; consequently an intended booking should be lodged with the Committee at least one month in advance. Bookings can be lodged with any member of the Committee, but the secretary or the chairman will normally give approval.

As the 1999 cricket season draws to a close we would like to draw villagers attention to the fact that the clubhouse will be open from 8.00 p.m. for skittles matches on every Monday and Wednesday and every other week on Tuesdays and Thursdays.

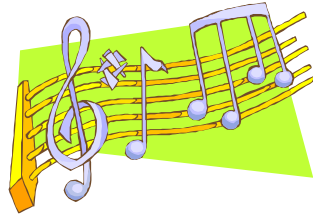
Social membership of the Club remains at £1 and entitles anyone to use the bar throughout the year. All new members would be made most welcome.

There will of course be the monthly Bingo session - Eyes down at 7.30p.m.

Please note for your records that whilst Mr.H.E.Breyley is still very actively involved with the Club, the chairman is now Mr.R.J.Smith (tel. 01404 822244)

## MUSIC IN ST. MARY'S CHURCH

Michael Farley is not only an organ builder of great renown, he is a restorer of organs and last but not least a first class organist. What a treat to have such a splendid concert in our church, it was all part of the village week events.



Michael not only played a very varied and tuneful programme, but also explained each work beforehand. He makes the organ sing wonderfully and powerfully, I do not remember ever hearing the organ sounding better.

Not only did Michael make the organ sound great, he also gave a talk on his restoration work and demonstrated what each pipe sounded like.

I enjoyed the concert immensely and think we have not had a concert of this quality since the days when Reverend Tucker used to invite Dudley Savage. Thank you Michael for coming. What good news about the "Big Night In" coming to Whimple.

There will be a Harp and Flute concert in Church Saturday November 27th. I am really looking forward to this concert, as we are not often spoiled for music.

Edith Grout

## Whimple Victory Hall

The Annual General Meeting  
of the Victory Hall Management Committee  
will be held on

Monday 29th November at 7.00pm

All village organisations are asked to send a representative

Everyone in the village is invited

## CHOOSING A NAME FOR YOUR HOUSE

Before you buy your new nameplate:

- check with the Post Office that no other house locally has the same name;
- inform East Devon District Council (01395 516551) of your choice.

### REASONS

- to avoid confusion for postmen and emergency services;
- so E.D.D.C. can inform all emergency services where the house is.

N.B.

- above is for your convenience - if the name is not in the postal address book your mail may not be correctly and speedily delivered;
- above is for your SAFETY - for example - if the fire service do not know where the house is, how can they get there quickly if needed?

Delay could cause death - don't risk it.

G.O. at the P.O.

# WHIMPLE P.C.C.

The P.C.C. has elected Mrs. Gerri Turner and Mr. Tim Ewing as Deputy Churchwardens and wish them both well as they undertake their new duties. This will relieve the workload that falls on our Churchwardens.

The Floral Arrangers for our Flower Festival this year are to be sincerely congratulated. Their imagination and skill truly captured the Festivals theme of the Millennium.

Last autumn we said that the Church would be warmer in the winter - this did not happen and it looked like "promises, promises".

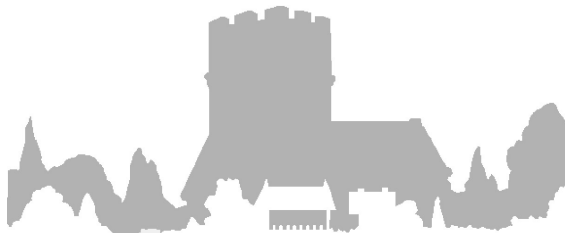
However you will be pleased to hear that new heaters are to be installed in the main body of the Church and the old heaters which still function will be removed to the side aisles. So this winter does promise to be warmer during services - a welcome thought.

Morning coffees on Saturdays throughout the summer continue 10.00 am till 12noon. We welcome everyone. The last Saturday is September 25th.

Harvest Thanksgiving Service is on September 26th at 11.00am. Following this will be the Harvest Lunch in the Victory Hall at 12.30pm for 12.45pm.

Tickets available from members of the P.C.C. -£3 for adults - £1.50 for Primary School children and free for the under fives.

D.F.



## NEWS FROM P.O. CORNER

Wasn't the eclipse super..? I think a fair bit of 'champers' was consumed on surrounding hills (and why not?) but what amazes me is the effect on the traffic - there has been none on the old A30 since the eclipse - magic! I really would like to see a total one somewhere sunny - anyone for Zimbabwe in 2001?

One mystery to me is why the 'Eclipse Co-ordinator' did not run the event in September thereby extending the season - like Blackpool does with it's lights - but maybe us Northerners are a bit more canny! To the P.O. -

Did you see that the P.O. are to chip in with Camelot to bid for the lottery license next time it comes on offer? It seems strange to me as I would have thought that the money would have been better spent within and to improve profitability of our core activities; but 'them up top' presumably know better - I know my place.

Talking about a lottery - my presence was requested by the P.O. (with some insistence) at an evening get-together entitled "Management Infrastructure Briefing" hosted by ICL Pathway - and as you can imagine with a title like that I could not wait for the evening to arrive. However it wasn't as bad as it sounds and was all about the preparation work necessary, and the dates planned, for the installation of "THE COMPUTER" in your Post Office - yes it is coming and, according to the plan, should be here in early 2000. Before the final positioning of the equipment your servants in the P.O. will have attended an 'User Awareness Event' - this means 'an instructional course' but like all large businesses simplicity of phrase is not of high priority.

What this all means to you is that you will have to exercise extreme patience in here in the New Year and no you can't go to another P.O. near here as we are all being done at the same time....! However you know how extremely au fait I am with modern technology so the change should be quite simple - just as long as someone explains to 'she who must be obeyed' that she will no longer be the only icon in the house.

**Gordon @ the P.O. [www.daftasabrush/wh.news](http://www.daftasabrush/wh.news)**

## Programme for Whimble Over 60's Club

### October/November

5 Oct. Whist	Victory Hall 2.30p.m.
9 Oct Coffee Morning	Victory Hall 10a.m. to noon
10 Oct Mystery Trip	Sunday Lunch
12 Oct*Speaker - Mr K.Rowley	Victory Hall 2.30 p.m.*
19 Oct Bingo	Victory Hall 2.30 p.m.
26 Oct Demonstration by Joan Nash	Victory Hall 2.30 p.m.
2 Nov Shopping Trip to Barnstaple	
9 Nov Beetle Drive	Victory Hall 2.30 p.m.
16 Nov Bingo	Victory Hall 2.30 p.m.
23 Nov Christmas Whist	Victory Hall 2.30 p.m.
30 Nov Christmas Bingo	Victory Hall 2.30 p.m.

\*12 October - Non members are very welcome to join us for this interesting talk which will take place in the main Hall. Mr. Rowley (accompanied by his dog(s)) gives talks about his Newfoundland Rescue Dogs. These dogs can rescue people in distress at sea jumping from helicopters, as well as pulling a custom- built cart. All we ask is that you make a small donation to help with the expenses involved.

If anyone would like to go on any of the above trips, please contact Mrs. Ena Northcott on 822228 who will advise you if seats are available.

## New A30 Trunk Road.

Whilst excavation work was in progress several interesting historic sites were uncovered by the contractors. Some members were able to visit one of these on the stretch of road between Iron Bridge and Honiton. Another discovery was made close to the footbridge at the rear of Long-Range. Here they unearthed evidence of a Neolithic Settlement.

By coincidence, a resident of Allergrove was preparing ground for a patio recently when a piece of flint was discovered. This was taken to the Exeter Museum where the Curator of Antiquities pronounced it to be a 'Large Flint Scraper, Neolithic, c4000 - 2000 BC.' This item has been retained by the finder and will be loaned to us for display at our next Exhibition in January 2000. Shards of lead-glazed 19th century Barnstaple/Bideford Pottery were also uncovered at the same location. We would be interested to hear of any other 'finds' in the locality.

## **Help Wanted!**

The Victory Hall Committee is looking for more volunteers to help redecorate the Hall as part of the Millennium project- if you can spare a few hours please let Cathy Bartlett-Horwood know on 822965

# WHIMPLE W.I.

## WHIMPLE HISTORY SOCIETY

'The Old Parish Chest' will be opened again in a joint production with Whimple Church on Wednesday 13th to Saturday 16th October 1999, inclusive. A previous performance was acclaimed as 'brilliant' and 'spectacular' by many who saw it. The full theatrical lighting system and the stunning music reproduction made it a performance to remember. However, a great number of people were unable to see it as all seats were sold in advance and many had to be turned away.

This time there will be extra performances and tickets will be on sale shortly. Watch for the posters in the village and book early so as not to be disappointed. This show will NOT be repeated!

### Annual Gift Auction.

This will take place on Friday 29th October 1999 at Whimple Victory Hall. This is quite a social event on the village calendar and is an enjoyable evening out. David and Roger from Oaks & Partners of Cullompton will conduct the sale and there will no doubt be plenty of bargains available.

If you would like to contribute any items for the sale please contact either John Shepherd (822076) or Mrs. F.Pratt (822451). We shall be grateful for anything you may wish to donate WITH THE EXCEPTION OF clothing and large items of furniture such as wardrobes. Small items of furniture, chairs, tables, stools etc., jewellery, soft furnishings, brass, china and glass etc., will be welcomed. We can arrange a collection service but NOT delivery after the sale.

This is our main fund-raising event of the year and is particularly important this year as our Heritage Centre project is showing signs of life! Outline Planning Permission has been requested!

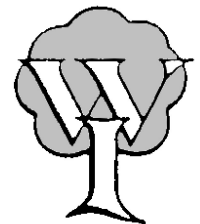
Our August meeting was attended by 30 members plus several visitors, some of whom were on a "look & see" visit and we hope to welcome them at a later date.

We had a superb evening with Mrs Nila Ross-Patel giving us a demonstration on how to cook Vegetable Korma and Pilau Rice. The Vegetable Korma was mouth-watering and was cooked in a yoghurt and cream sauce whilst the Pilau Rice, with all those wonderful herbs and delicate spices, was delicious. Everybody had remembered their plate and fork and so we were able to tuck in and enjoy before getting on with the business agenda.

One of our members, Mrs Jan McPherson had recently returned from a week-end entitled 'Country House Musical Weekend' at Denman College and gave us a wonderfully entertaining talk - Denman College is the W.I.'s own residential Adult Education college near Oxford, named after the first NEWI Chairman, Lady Denman. Every year over 6,000 members from all over England and Wales come on some 500 short and long courses, all of which are aimed at developing new skills and knowledge. Denman is a graceful Georgian house set in 17 acres of grounds. The highlight of the course was a mini-Glyndebourne production of The Marriage of Figaro.

Our competition for the most four letter words from 'Women's Institute' was won by Mrs Joy Smith.

The next meeting will be on Tuesday 14th September at 7.30 pm, and will be a Social evening when we will all bring a plate of food to share. There will be Drama (if we've learnt our lines by then) a quiz or two plus our raffle and a chance to share in the wonderful company of fellow members. So do come and join us.



# Organisations in Whimble

## **Whimble Parish Council**

Chairman: Sara Randall Johnson  
822524  
Clerk: Mr K. Larcombe, Council Office - Torno  
823385  
Tel: Tel

## **Royal British Legion**, Branch and Womens Section.

Chairman: Mrs. F. Pratt, Sandfords  
Tel 822451

## **St. Mary's Church**

Contact: Rev. Keith Feltham, Grove Rd  
Tel 822521

## **Devon County Councillor**

Mr. R. Giles, 14 Winters Lane, OSM. Ex11 1AR  
Tel 813387

## **Whimble County Primary School**

Headteacher: Mrs. D. Brice  
Tel 822584

## **Whimble History Society**

Mr. R.J.Shepherd  
Tel 822076

## **Whimble Mothers Union**

Mrs. D. Rastall, Killigarth, Church Road  
Tel 822486

## **Whimble Playgroup**

Chair: Tiffany Harling  
Toddler Group contact: Jenny Sanders, Ova Yonda  
Tel; 823021  
Tel: 823015

## **Whimble Womens Institute**

Secretary: Mrs. Rosemarie Burrows, Higher Slewton  
Tel 822422

## **Whimble Over Sixties Club**

Mrs. Lin Carder, 18 Dince Hill Close  
Tel 822538

## **Whimble Recreation Trust**

Knowle Cross Sports Ground. Mr P. Garraff, Luppit  
Tel 891206

## **Whimble Village Produce Association.**

Chairman: Mr. A. Bratt, Rockwell, Talaton  
Tel 822437

## **Whimble and Broadclyst Young Farmers' Club**

Mr. R. J. Burrough, Gateshayes Farm  
Tel 822257

## **Whimble Youth Club**

Leader: Mrs. Liz Silk  
Tel 822389

## **Whimble Football Club**

Chairman: B. Weeks, Briar Cottage, Church Road  
Tel 822674

## **Whimble Tennis Club**

Secretary: T. A. Lang  
Treasurer: J. Hughes  
Tel 822512  
Tel 822659

## **Whimble Cricket Club**

Mr. R.J.Smith  
Tel 822244

## **Whimble Victory Hall Management Committee**

Secretary: Cathy Bartlett-Horwood, 57 Grove Road  
Booking Sec: Mrs. P. Weeks, Briar Cottage, Church Rd.  
Tel 822965  
Tel 822674

## **Whimble Post Office**

Gordon & Heather Owen  
Tel 822359

## **Whimble Pantomime Group**

Peter Bolwell  
Tel 823209

## **Whimble News**

Peter Smith  
Tel: 822828

## **Whimble Scout Group**

Group Scout Leader : John Spencer  
Scout Leader: Adam Bird  
Cub Scout Leader: Rachel Hutt  
Beaver Scout Leader Valerie Bond  
Marquee Booking Sec : Mrs. Mary McConnell  
Tel 822788  
Tel 813923  
01395 267846  
Tel 822473  
Tel 822729